

# THE UPPER WENSLEYDALE NEWSLETTER

Issue 315

December 2024 and January 2025

**Donation please:  
50p suggested**



B. Fremlin

Covering Upper Wensleydale from Wensley to Garsdale Head plus Walden  
and Bishopdale,  
Swaledale from Keld to Gunnerside plus Cowgill in Upper Dentdale.

## Guest Editorial Carols – Embracing the Story

Which, would you say, is your favourite carol? And if you can name just one which for you beats all the others, I wonder what it is about that carol that gives it top place in your rankings?

Some tell the story in simple narrative, like ‘While shepherds watched their flocks by night’, while others carry profoundly thought-provoking lines such as “God and sinners reconciled” in Charles Wesley’s ‘Hark, the herald angels sing’.

Some are deeply evocative, like ‘Silent night’, and others may have a particular memory or association for us, like the child soloist singing the first verse to ‘Once, in royal David’s city’ on Christmas Eve. So, what is it that makes your favourite your favourite?

Asking myself that question, I think I shall have to be more lenient and let us have a shortlist: there are too many I wouldn’t want to rule out – whether it’s the delightful ‘O ‘little town of Bethlehem’, or the ebullient ‘Joy to the world’!

Fortunately, in our carol services we often sing 8 or 9, so there’s a good chance of catching a few of your special ones! These services are always popular, and with good reason. Somehow, gathering together on a dark and cold evening in a brightly lit church to rehearse the story of hope for the world creates an ambience where we can tune in to these truths and recall a message of peace for a troubled world.

Singing the story somehow makes it more accessible also – but it’s important to read the words we’re singing, otherwise we’re just caught up into the emotion of the event – and so I’ve titled this piece, ‘Embracing the Story’. The carols have an amazing message – old and yet ever new, and as critically important in our own day as it has ever been.

We don’t escape from reality into sentimentalism – rather, in singing and story we hear again how God has entered our reality, at great cost ... as the baby born and placed in the manger was destined for the cross, leading to Wesley’s words that I quoted: “God and sinners reconciled”.

Real life circumstances are never far away in our services, and in many of our churches we

sing at Christmas from an edition of the “Bethlehem Carol Sheet”. Ever since these were first produced – amazingly, 70 years ago in 1954, they have carried images of the Holy Lands and carried brief snapshots of life in the Middle East. The carol sheets are produced by a Christian development charity called “Embrace the Middle East, with staff in Israel/Palestine, Lebanon, Syria, Iraq and Egypt – the majority of these lands and peoples enduring or having endured terrible suffering in the present day.

Sadly, as I write this, I have just read of the death of another of their partners’ staff – a 27 year old midwife, who died two days ago, with her husband, two young children, her mother, father and brother, when the building they were sheltering in was hit in an airstrike in Gaza.

Humanity continues to make a mess of getting on well together – but, as we embrace the story, we hear again of a birth which is a pivotal moment in our history. The name ‘Jesus’ means “God saves”. The gift He brings is a gift of peace. As we look to Him, so we may find peace in our hearts, peace with our neighbour and peace in all circumstances – a calm, even in conflict.

When peace is missing from our lives – and we’re fretting about paying the bills, or have a concern for a relative or simply that the news is getting us down – then it’s time again to hear the message of the angels ... whether in a carol service, or at any time of the year. Our church buildings are wonderful resources, and generally open every day – or you might find a place of sanctuary on the open hillside ... where these words may equally turn us again to a heavenly peace:

Hark! The herald angels sing

Glory to the new-born king,  
peace on earth and mercy mild,  
God and sinners reconciled.

Joyful, all ye nations, rise,  
join the triumph of the skies;  
with the angelic host proclaim,

**Christ is born in Bethlehem!**

Happy Christmas!

**Rev. Tom Ringland – Vicar of the Penhill churches**

## Dales Charity Bingo Report

We enjoyed a good turn out for a lovely and warm night of bingo in Hawes Market Hall on 6th November. Stephen Reynolds called the numbers and again injected some local facts into the night's calls. We were pleased to see every table went home with one or more prizes. Thank you to everyone who came out and supported the night. We raised £174 for the Market Hall, which is going toward the new kitchen floor in the Community Hub.

Our next and final bingo night for 2024 is being held on **Friday, December 6th** in the Askrigg Village Hall. Please note three key changes for this event – the day is Friday; it is at Askrigg and it starts at **7.00pm** – see our advert on page 10.

For the **December 6th** night we have a merry Christmas style evening planned, complete with singing from the Askrigg Ladies Who Sing for Pleasure. The ladies are also making some lovely home baked cakes for supper. There are several cars going from Hawes, so if you need a ride, please call **Wayne on 01969 666020**.

Our 2025 dates are all Wednesdays :

**January 15th; February 12th; March 12th; April 9th; May 14th; June 11th; July 9th; August 13th; September 10th; October 8th; November 12th and December 10th.**

If your group would like to receive the profits from a future Bingo night, please email us at [dalescharitybingo@gmail.com](mailto:dalescharitybingo@gmail.com) or call **Jan on 07736 017459** as our monthly dates are already filling up.

### Submission of articles

Please note that all submissions should comply with current copyright legislation. If submitted articles are not the original work of the person submitting them, then all relevant permission should be sought and granted for reproduction.

**DEADLINE FOR COPY FOR  
THE NEXT ISSUE IS  
TUESDAY JANUARY 21st  
PUBLISHED ON JANUARY  
30TH**



### Eunice the Ewe

Last month I was hiding in the Upper Dales Bonfire and Fireworks advert on Page 26 and the lucky winner of the £10 prize is Zena Sharples of Hawes.

Where am I this month? To enter for the £10 prize, please include your postal address if replying by email.

## Bear Cottage Interiors

Curtains and Blinds,  
Fabric and Interiors

Market Place Hawes

**01969 666077**

Email [julie@bearcottageinteriors.co.uk](mailto:julie@bearcottageinteriors.co.uk)

Website [www.bearcottageinteriors.co.uk](http://www.bearcottageinteriors.co.uk)

**The accuracy, appropriateness or legitimacy of any product or service advertised in this publication is the sole responsibility of the advertiser and not of the Upper Wensleydale Newsletter.**

### In This Issue

### Page

Guest Editorial	2
Competition	4
Hawes School News	5
Rev. Dave Clark Article	7
Ed Gardener	8
BAWB School News	9
Wensleydale School News	10
Mystery Picture	14
Operatic Society Panto	17
Heavens Above	18
What's On	20
DCM News	21
Hawes Charity Christmas Concert	22
Funny Church Bulletins	22
Santa's Route	23
Poppy Appeal	25
Old Advert	26
Magic of Christmas Concert	27
Thorney Mire Notes	29
Hawes Yarnbombers	30 and 32
Swaledale Festival	35

## December Competition

Here's one for all you amateur botanists out there. Crossword type clues to English wildflowers. You have almost two months to send in your answers!

1. Get better on your own (8)
2. I will make a raven sweat (5,5)
3. This ain't in the plan. Yes, it is! (8)
4. Would Tony be all right with it? (6)
5. They blamed the G.W.R. for its spread in the early days (6,7)
6. A bit of a sad-looking and prickly Character (10,7)
7. Not many with a high temperature (8)
8. Exotic fruit passed water? (13)
9. Few rolling table around (5,10)
10. Last post player (6)
11. Bird unit of data (7)
12. Sounds like a riotous occasion! (4,5)
13. On a vixen's hand (8)
14. Derbyshire cavern (9)
15. Tatty Bird (6,5)
16. Mr Garnett squared (7)

Please send in your answers (as many as you can get!) to arrive by **Tuesday, January 21st**. Don't forget to include details of your nominated charity which will receive the £50 prize should you win.

## Reg Fagg Trophy Winners

The winner of the Reg Fagg Trophy was Bob Fremlin whose winning entry is our cover picture this month.

Class 1 Winner: Theo Sunter

Class 2 Winner: Isla Sunter

Class 3 Winner: Josh Fagg

With a very high standard judging was very difficult. Well done to all the entrants.

## Hawes Christmas Lights

Once again we are selling Christmas Cards to raise funds. Please visit our Facebook page (Hawes Christmas Lights Festival) for more information. Please note we will be taking down the Christmas displays on **Wednesday, January 8th**. If you can help please meet at Town Foot at **8.30am**

## November Competition Answers

### It's Time for Cake

1. Swiss Roll
2. Madeira Cake
3. Chocolate Brownie
4. Doughnut
5. Fat Rascal
6. Gingerbread
7. Lamington
8. Parkin
9. Hot Cross Bun
10. Lemon Drizzle
11. Chelsea Bun
12. Bakewell tart
13. Dundee Cake
14. Battenberg
15. Victoria Sponge Cake
16. Pineapple upside down cake.

There were 14 entries for this competition only two of which matched the answers we had. The winner was chosen as Rhian Liddell from Askrigg whose chosen charity to receive the £50 prize is the Low Mill Outdoor Education centre.

## Drop-off points and contacts

For news, articles, reports, letters, What's On dates, competition entries, suggestions and comments:- All 01969 numbers unless stated.

<b>Hawes:</b>	Community Office	667400
<b>Bainbridge:</b>	Sylvia Crookes, 3, Bainside	650525
<b>Askrigg:</b>	Sykes Shop,	650535
<b>Carperby:</b>	Anthony Abraham Hall Garth	663243
<b>West Burton:</b>	Nadine Bell, Margarets Cottage	663559
<b>Aysgarth:</b>	Hamilton's Tearoom	663423
<b>Redmire:</b>	Kevin Davis Westholme	624165
<b>Thoralby:</b>	Neil Piper	663747
<b>West Witton</b>	Christine Barker, Chestnut Garth	624934
<b>Preston and Castle Bolton</b>	Alastair McLachlan	07817 709167



## Hawes School News

### Crucial Crew:

At the start of November our Class 3 children went to Crucial Crew at Carlton Lodge, Thirsk. The pupils went to five different work shops where they were learning about water safety, fire safety, drugs awareness, smoking and vaping and online safety. The pupils were fantastic and asked many questions to increase their knowledge and understanding. Crucial Crew is a great opportunity for the pupils to learn more about how to keep safe and healthy which supports the PSHE curriculum taught in school. They also work with a range of other children from across North Yorkshire.

### Remembrance Day:

On Remembrance Day our children in Class 1 visited the war memorial opposite school as part of our learning in History around Remembrance Day. The children made a poppy wreath and laid it on the memorial, we then held our two minutes silence. It was a thoughtful



time for all the children and we listened to a poem during our time there. The children have further developed their knowledge of World War 1 and the fund raising by the Royal British legion.

### 80 Candles:

Our Year 6 children have been working with Mick Rhodes on our 80 Candles For 80 Years project to commemorate the 80th anniversary of the liberation of Auschwitz-Birkenau. This has been part of a nationwide project. They have made a candle holder to mark Holocaust Memorial Day on the **27th January, 2025**. The children will revisit their candle holder work at this point and light it on the day. They have

made connections with conflicts that are happening in the world today. We would like to thank Mick for his work with the children on their special project.

### Gardening Club;

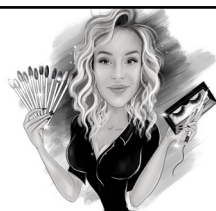
We would also like to thank Mick for his work with the children at our Muddy Paws Gardening Club each Wednesday. The younger children in school have really developed a love for the gardening and learning in the outdoors through this experience. We are all looking forward to next Spring when the club will start again.

### Harvest festival:

On the Friday before half-term we had an amazing Harvest Assembly in the school hall with Rev Dave and Mrs. Clark. It was a real celebration with prayers and poems from the KS2 children. The singing was really joyful, especially Big Red Combine Harvester! Thank you to all the families who joined us and to Rev Dave and Mrs. Clark for their support. It really was super to see the amazing donations from families for the Open Pantry foodbank.

A very Merry Christmas from all at Hawes Primary School.

Please keep up to date with our news via our website <https://www.hawesprimary.co.uk/> or contact school via [hawes@ycatschools.co.uk](mailto:hawes@ycatschools.co.uk). We also have a school Facebook page where you can view our learning in school on a regular basis.



*The Parlour*  
HAWES

Nails • Lashes • HD Brows • Aesthetics  
• Microblading • Teeth Whitening

07794331509



Scan the QR code  
to book

Whatever the illness,  
we're with you to the end.



## Wensleydale Marie Curie Fundraising Group

Local people have helped Marie Curie's Wensleydale Fundraising Group raise £3,000 since April this year. This money will have provided 130 hours, or 14 nights of nursing care for local people with a terminal illness, in their own home.

This money has come in via street collections, tins on counters in shops, pubs, etc. It's come from home-made cakes and scones, tombola stalls, wild dancing to the ceilidh band Blind Panic. It's from the unwanted mobile phones, pieces of jewellery, dropped into the recycling box in Leyburn Library or donations made at funerals. Catterick Racecourse gave us the opportunity to have a bucket collection on a family fun day.

New group members are always welcome. Like all groups of volunteers, events always need another pair of hands. Meetings are kept to a minimum, most of the planning is done via email. If you are interested contact **Gemma Hewitt, the Senior Community Fundraiser (Yorkshire) for Marie Curie** Tel: 01274 386190 / 07525 392985, or email [gemma.hewitt@mariecurie.org.uk](mailto:gemma.hewitt@mariecurie.org.uk), or contact [wensleydale.mariecurie@gmail.com](mailto:wensleydale.mariecurie@gmail.com).

Thank you for your continued support of the local Marie Curie Nursing Service. Best wishes to everyone for a Merry Christmas and a happy, peaceful New Year.

**Margaret Knight, Group Secretary**

## ANDREW HAWKINS BUILDING CONSTRUCTION CONTRACTORS

NEW BUILDS | EXTENSIONS  
BARN CONVERSIONS | ROOFING & GROUNDWORKS  
APPROVED DAMP PROOFING & REMEDIAL  
TREATMENT SPECIALISTS

**Tel: 0800 002 9779**

Email: [hawkinsbuilder@hotmail.com](mailto:hawkinsbuilder@hotmail.com)

Unit 5 Hamby Business Park, Hamby Road, Leyburn, North Yorkshire, DL8 5QA



The children in Dalesplay have been raising money for children in need. We wore yellow for the day, sold cakes in the entrance and enjoyed making Pudsey masks, counting the spots on Pudsey, colouring him in and making a teddy bears' picnic. This month the children have been learning why we wear red poppies to remember all those who lost their lives and fought for us in the war. We visited the cenotaph and read stories to help us learn all about it.

We have been learning how to stay safe when out and about in our community. We practiced crossing roads safely, we looked at what we need to wear to keep ourselves safe when on our bikes and horses. We learnt how to read the traffic lights, and also a new song to help us remember what the different colours on the traffic lights mean.

Dalesplay would like to thank everyone who supported us at our Christmas Fayre we held in the market hall. The money will help pay for the new windows being fitted this month. We have also raised enough now for our new trike shed.

We currently have spaces available from January for funded and paid sessions. If you would like a place or have a look around one evening please get in touch, places are limited. email: [dalesplay1@btconnect.com](mailto:dalesplay1@btconnect.com).

## Cleaner Wanted

Private House  
3 hours per week Flexible days

Please contact Marie  
Park House, Low Abbotside



## Hamilton's Tea Room At Yoredale House, Aysgarth

Licensed Tea Room  
HOMEMADE FOOD,

Light Lunches, Clotted Cream Teas  
Open Feb-Nov, 10.30am - 4.30pm  
Closed Mondays and Tuesdays

Tel: 01969 663423

[info@yoredalehouse.co.uk](mailto:info@yoredalehouse.co.uk)



The team is made up of highly trained volunteers available, 24/7 in any weather, any time of the day or night. On average we respond to between 40 to 50 calls each year. In an emergency DIAL 999 ask for the POLICE then Mountain Rescue / Cave Rescue / Mine Rescue / Flood Rescue.

We have attended 53 incidents so far in 2024.

Thanks to the following for their recent donations:

Sykes shop, Askrigg £56.27

The Fountain, Hawes collecting tin and book sales £172.06

The Fountain Hawes, Harry Grimm Event £520

Wensleydale Creamery £108.44

Greenlands BandB, Keld £19.75

Aysgarth NP centre £55.09

We'd like to wish all our supporters a very Merry Christmas and a Happy New Year.

## Knowing Where to Look

Expectantly, mother and smiling child entered Santa's 'Magical Christmas Grotto'. "Ho, Ho, Ho. Hello there little one" said Santa in his agreeable way. "Now, what would you like for Christmas?" The child's smile disappeared very swiftly to be replaced with an expression of great concern. Looking him straight in the eyes she said, "Didn't you get my email?"

The desire to provide a loved one with a gift that's been sincerely considered and carefully selected is very real and one that sits deep within us, so the window displays, magazine articles and multi-media presentations work hard at presenting us with a range of goods to entice us into purchasing that 'perfect' Christmas offering.

Some folk are more talented and able in this seasonal ministry than others but as I was beginning to consider waking my 'inner Santa', I came across the following statement at the end of one of the special Christmas TV promotions. 'The secret to finding the perfect gift is knowing where to look'. My Christmas sermon antennae twitched as I realized the seasonal truth behind those words.

Amidst all the bustle and busyness of our preparations it can be easy to forget what the season is all about. The Bible records that God sent His son into the world as a very special gift: 'For to us a child is born, to us a son is given' <sup>Is.9:6</sup>. Many looked for him in the wrong places then and many still do. In a world of increasing uncertainty, Christmas speaks to us of Hope and of God being with us: 'Emmanuel'. Churches and Chapels the length and breadth of the Dale will be delighting in this wonderful truth and celebrating the reality that we have been provided with the 'perfect' gift for all time. All we need to do now, is to know where to look.

There are lots of opportunities to celebrate this gift of Hope together and it would be lovely to welcome you to any one of them in the coming days. In the meantime; May the God of light and life, fill your hearts and your homes with joy this Christmas and into the New Year. A very Happy Christmas to you all!

*Per Dave.*

# WOODCRAFT STUDIO & TIMBER SERVICES

## Christmas Shopping Days

**SATURDAY & SUNDAY**  
**23rd & 24th NOVEMBER**  
**7th & 8th DECEMBER 2024**

**10.30 am - 4.00 pm**

**AT THE WOODCRAFT STUDIO,**  
**Raygill House Farm, Hawes. DL8 3PP**

**Ample Parking**

Quirky Christmas Trees,

Hedgehogs, Festive Gifts,

Woodcraft Stalls for Kitchen, home & garden.

**FREE ENTRY \*\*\* REFRESHMENTS**

*All surplus proceeds donated to local causes*

\*\*\*\*\*

01969 667320

admin@gaylemill.org.uk

www.gaylemill.org.uk

Charity Reg. No. 1123047

see over for location map

## Berry Christmas

Who's up for scouring the wind blasted hedgerows for Christmas berry cheer? Deafening silence. Can't blame you, as it's that time of the year 'when no bird builds a nest' and the fireside/fake logs call. Why not keep things close and grow your own – ok, fruiting may take a couple of years, but gathering from your own patch is satisfying and a whole lot easier.

Cotoneasters are prolific fruiters; go for the tree like specimens 'Lacteus' or 'Simonsii' for red/orange berries but just be aware that (random fact alert) the latter is one of five potential cotoneaster outlaws which you are not allowed to introduce into the wild as they are so invasive. I was never aware that giving my bog standard 'horizontalis' the freedom of the dale is a punishable offence with hefty fines threatened, so security has been strengthened - don't want the flying squad in my potting shed. Why not be a lawful rebel and opt for 'Rothschildianus' - it's a real beauty, although are those custard yellow berries seasonal? What the heck, break the rules.

I'm a bit off pyracantha this year as my 'orange glow' succumbed to fire blight. I sprayed it, cut it back, fed it with some fancy fertilizer, which I'm convinced is the garden equivalent of botox – it plumps and pumps up but is temporary and there's a price to pay later on – all to no avail so out it came. However, don't let my ineptitude/misfortune put you off as either 'Golden Charmer' or 'Red Column' will brighten any dull as ditchwater wall.

Best of all for red berries is the guelder rose, *viburnum opulus*. I've seen this rioting in the hedgerows around Masham, the golden leaves and ruby fruits quite thrilling. Give yourself an annual autumn treat and get one tamed as a canopy for hardy *hederifolium cyclamens* and prolong the season into early winter.

Please, please DON'T plant snowberry unless you want to inflict pain. Wow, can this vandal spread. Those *symphoricarpos* piano wire roots refuse to be dug up and that suckering habit out suckers Japanese knotweed. I was 'invited' (suckered in) to help clear a forest of the stuff in an Askrigg garden back in the 90's. The memory's still painfully clear, a million miles from glitzy 'Gardeners' World' and all those fancy planting schemes; this was an all-day slog and then feeling as stiff as a board for a

week. What a wimp but never again.

I love my red berrying *pernettya* 'Cherry Ripe' although dappled shade, lime free soil and the need for a nearby male plant such as 'Edward Ball' are essential for success with this contrary little prima donna. Just to add complications, shadowy busybodies have recently rechristened it *Gaultheria*, so bear that in mind when you're plundering your local garden centre.

Loveliest of all is *callicarpa bodinieri*. Ok, it's an unassuming little lilac flowering plant in summer but, oh boy, in autumn, when that foliage catches fire and those astonishing purple berries develop, well it's just great, thrilling, and I'm getting gushy. This variety will manage to fruit on its own and will flourish in neutral to acid soil, so maybe add a bucketful of ericaceous compost when planting.

All plants mentioned need plenty of room but will enhance the overall look of your garden. Underplant with the aforementioned cyclamens, epimediums, snowdrops or, if you have the room, clumps of *sieboldiana* hostas. In shade, these appear luminously blue so are great for under the taller cotoneasters.

I've not included sea buckthorn as my attempts to grow it have been absolutely pathetic, and I've also not mentioned either elder or holly as that's a potential 1500-word article for the new year – you have been warned.

**Ed Gardener**

## Hawes Primary School PTFA

A huge thank you to everyone who braved the weather and came to our Christmas Fair on the November 23rd. We battled snow, then flooding but still managed to raise an amazing £2065.61. Many thanks also to the fabulous local businesses who donated raffle prizes and refreshments – we really do appreciate your generosity!

On **December 11th**, all pupils from reception to YR 6 are visiting The Georgian Theatre in Richmond to see this year's pantomime – Treasure Island. The PTFA have donated towards this trip, along with the Tolls Trustees. We also contribute towards swimming lessons each year, the KS2 residentials, class trips, iPads and other learning resources. Any money we raise really does benefit each and every child in the school so, once again – thank you.

## BAWB Schools News

Wow, November went quickly! Children in Need was a blast this year and we certainly had a jam-packed day – the children baked and iced biscuits, created some Pudsey-themed crafts and even had time to show off their best dance



moves, all whilst dressed in this year's chosen theme – comfy clothes. As you can imagine, the staff were very pleased about this!

After the excitement of Pudsey's visit, we are now well and truly cracking on with Christmas! We have so much to look forward to, including our performance of Angel Small at St. Oswald's Askrigg, our annual trip to the Georgian Theatre to see the pantomime, and the PTFA Christmas Fair which is being held at Askrigg Village Hall **on Sunday, December 8th from 10.00am-3.00pm**. To top it all off we will also have our famous Christmas Dinner and party – we already can't wait!

Don't forget that **January 15th** is the closing date for applications for those starting Reception in September 2025 – we would love for you to join us at BAWB! If you're interested in having a look around, please contact us at [bawbadmin@b-a-wb.co.uk](mailto:bawbadmin@b-a-wb.co.uk) or **01969 650331**.

Finally, we would like to thank the Gall family, who very kindly donated to our schools following the funeral of the late Susan Gall. Many of our staff have fond memories of Mrs Gall, and we are so appreciative of the thoughtful gesture. What a wonderful community we live in.

We hope you all have a wonderful Christmas and New Year. With love from the BAWB Federation.

## SANDERSON & CO. FUNERAL DIRECTORS

A complete and caring funeral service  
provided by an independent  
family business established in 1879.



For personal and  
dignified attention  
in time of need  
please contact

**Richard Sanderson**  
Leyburn Business Park DL8 5QA

**Tel: 01969 623143 (24hrs)**

**Mobile: 07710 652348**

**Email: [sandersonandcoleyburn@gmail.com](mailto:sandersonandcoleyburn@gmail.com)**

We offer Golden Charter Pre-payment Funeral  
Plans Please ask for further (written) details.

## Firewood

**Seasoned hardwood logs**

**Tel: 01969 662692**

**Mob: 07970 629227**

## Solid Joinery Solutions

All aspects of joinery and carpentry undertaken.  
Bespoke joinery solutions made to your  
requirements.

Covering all Yorkshire Dales and surrounding  
areas

Contact Paul for a free, no obligation quote  
on **07980 167987**

Email: [enquiries@solidjoinerysolutions.co.uk](mailto:enquiries@solidjoinerysolutions.co.uk)

Web: [www.solidjoinerysolutions.co.uk](http://www.solidjoinerysolutions.co.uk)

## FOR SALE CHRISTMAS TREES

All varieties and sizes of trees at the  
very best prices at our plantation near  
Askrigg. Please contact

**01969 650597**

**mobile 07979 861438**





A few weeks ago we began to compile an Alumni, to raise aspiration and highlight success to our current students. We are compiling an Alumni wall of fame and are also inviting ex-students to come and talk to students as part of our career's curriculum.

This month we would like to showcase Lola Reilly who is excelling in the field of Experimental Arts and Performance. Lola was a student at our school between 2016 – 2021 and left with a suite of higher-grade GCSEs, she tells us:

"After Wensleydale I studied English Literature, Classical Civilisation and Performing Arts at Richmond Sixth Form. (As well as an EPQ on Queer Performance).

This led me to Edinburgh for a six month Acting Foundation course with Rose Bruford College of Arts. Now I am studying with Central School of Speech and Drama in London, working on a degree in experimental arts and performance! I feel I have extensive knowledge on education for performance and it's something I would love to share. It tends to be an abnormal way of studying so it would be great to discuss."

We have had an exceptional response to our 'shout out' for Alumni, so if you left Wensleydale and have amazing stories to tell, Mr Ellis would love to hear from you, [christopher.ellis@wensleydaleschool.net](mailto:christopher.ellis@wensleydaleschool.net).



### Let Girls Play campaign

The Football Association (The FA) recently launched a campaign to ensure girls have the same access to football in schools and in clubs by 2024 as boys do.

Research shared as part of the campaign shows that football is very popular amongst girls and that the numbers of girls engaged in football is continuing to grow. Whilst football is the most popular team sport for young people in England, only a third of girls aged 5-18 years participate each week. The research findings show that 90%

of girls who play, enjoy it. 60% of these girls who play football in schools want to play more and 91% of girls who don't play, want the opportunity to do so.

We are delighted that our PE department has been recognised as an Equal Access School by English Football.

Miss Leathley, PE Teacher said, "This award recognises the effort and commitment of our girls to school sports and PE across the curriculum. All students follow the same curriculum in PE and are given equal opportunity to participate in enrichment sports activities and represent the school at sports fixtures."

And finally....

This week I attended the annual Festival of Remembrance at Ripon cathedral. With me were two staff members, three adult volunteers and 50 students, whose parents have links with the armed forces. It was a moving and thought-provoking service.

As ever, our students were impeccable, so much so that three members of the public, separately, sought me out during the day to comment on how polite, courteous and well behaved our students were. Similar comments were also posted on Facebook about our girls' football team when they played in a tournament in Ripon.

**Julia Polley**  
**Headteacher**

**The Wensleydale School and Sixth Form**

Charity



Together with  
**Askrigg Ladies Who  
Sing for Pleasure**  
**Friday 6 December 2024**  
**Askrigg Village Hall**  
Entry from 6.30pm, for  
**Starts at 7.00pm**  
Entry £6  
**Profits to The Salvation Army  
Christmas Appeal**

## Yorebridge Education Foundation Financial Assistance for Students 2024/2025

Grants are being offered to students under the age of 25, who live in Upper Wensleydale, and are moving into, or are already within, higher education for the academic year 2024/25.

The grants are awarded to provide financial assistance in meeting educational costs, including transport costs.

The Trustees of Yorebridge Education Foundation are now inviting grant applications; applicants should provide details of their age,

the educational establishment that they are to attend, their chosen course, how they would use the grant if awarded one, plus any additional information that they consider relevant.

Students are welcome to apply this year even if they have been awarded a grant in previous years.

All applications must be received by **December 31st 2024** and should be sent electronically to The Clerk: [clerkyef@outlook.com](mailto:clerkyef@outlook.com) or by post to:

The Trustees Yorebridge Education Foundation c/o The Haven, Askrigg, Leyburn, North Yorkshire DL8 3HN.



**Now serving Afternoon Tea by advanced booking  
Wednesday - Saturday 12pm - 4pm**



**Food served daily from 12pm**  
[www.aysgarthfallshotel.com](http://www.aysgarthfallshotel.com)  
01969 663775



## Upper Wensleydale Property Services

**All aspects of domestic plumbing and heating work undertaken**  
**Bathroom supply and fitting, wet room installation and tiling**  
**Heating systems, and oil boilers and tank installations**

**Please contact Malcolm Grant on 07855 191466**  
**email: [mgwensleydale@gmail.com](mailto:mgwensleydale@gmail.com)**

## STURDY TRAVEL

INDEPENDENT TRAVEL SPECIALISTS

Now at Toll House (Next to Spar)  
Market Place, Hawes DL8 5QX  
Also at 1, Golden Yard, Market Place,  
Leyburn, DL8 5AS

For all your travel needs, home and abroad

**Call: 01677 422826**  
Email: [robert@bakewelltravel.co.uk](mailto:robert@bakewelltravel.co.uk)  
Part of Bakewell Travel  
ABTA No. P8596

## McGARRY & Co. Solicitors

---

**From small personal matters to larger commercial transactions, for personal advice in an impersonal world.**

Market Place, Hawes,  
North Yorkshire DL8 3QS  
Telephone No 01969 666290  
or email  
[office@mbmcgarry.co.uk](mailto:office@mbmcgarry.co.uk)

**Farm and Home visits by appointment**

Regulated by The Solicitors Regulation Authority  
No. 553987

## Leyburn and District u3a

You are welcome to join us for mince pies and coffee on **Friday, December 20th** and to discover how the global organisation that is now the u3a came about. In 'u3a here, there and everywhere' Bob Hill will explain how u3a developed into a world - wide movement.

Discover Marrick Priory Outdoor Centre at our meeting on **Friday, January 17th**. Marrick Priory in Swaledale is an outdoor educational and residential centre which hosts more than 3000 young people each year from across the North of England. Its building's fascinating history began as a 12th Century Benedictine nunnery which was dissolved by Henry VIII in 1540. In her talk Sandy Carter, the Centre's Development Officer, will bring the history of the Priory to life and will describe how over the next few years, the Centre's ambitious plans to develop its services to a wider audience will allow more people to realise the magic of the Marrick Priory Experience. Doors open at **10.00am for 10.30am** at Leyburn Arts and Community Centre, Richmond Road, Leyburn DL8 5DL.

Visitors and new members are always welcome. Annual membership is £12 or £20 for two people at the same address. For details contact **Sue Mellish 01748 850471** or [susiemellish@g.mail.com](mailto:susiemellish@g.mail.com).

## Churches Together Advent Taizé Service

As part of our journey through Advent, Churches Together in Upper Wensleydale are holding a Taizé Service at Gayle Chapel on **Tuesday, December 10th**. The event will start at **noon** with a hearty soup and bread lunch followed by the service itself at **1.00pm**. So as we journey through advent towards Christmas do join us for this occasion. All are most welcome to attend.

## Owen Haygarth 23.12.2024

Happy 18th Birthday Owen. Have a fab time celebrating on your birthday weekend!

Love Mum, Dad, Lily, Pippa and Bonnie  
xxx



## Winter Events

The Yorkshire Dales environmental charity Friends of Dales programme of monthly online talks runs throughout the winter with the following now available to book via: [www.friendsofthedales.org.uk/events](http://www.friendsofthedales.org.uk/events).

Online talk: The Yorkshire Dales National Park – 70 years on:

### Wednesday, December 4th, 5.00pm

National Trust Property Ecologist Dr. Elizabeth Sullivan will talk about Malham Tarn National Nature Reserve and its habitats, in particular those at the Tarn – England's highest lime-rich lake and the moss in its wetland areas. She will also introduce some of the key flora and fauna at the site, providing insight into how they are monitored and managed.

Online Talk: A Nature-based Approach to Flood Management:

### Wednesday, January 22nd, 5.00pm

Ousewem is an innovative flood resilience project identifying and delivering nature-based solutions (NbS) and natural flood management (NFM) to reduce flood risk in vulnerable North Yorkshire communities, spanning Yorkshire's Swale, Ure, Nidd and Ouse (SUNO) catchments. The project, funded by Defra is part of the £200 million Flood and Coastal Innovation Programmes managed by the Environment Agency.

Amanda Crossfield from Yorkshire Dales Rivers Trust – one of Ousewem's delivery partners – will provide insights into its ongoing work using NbS and NFM techniques which aim to strengthen flood resilience in at-risk North Yorkshire communities. All talks are free – but as a charity we always welcome a small donation.



**LIBERTY**  
FABRIC

Quality fabrics for quilting,  
dressmaking, etc., sewing  
accessories, a little wool/yarn .  
**Abbotstone House Collection,**  
**Now at Unit 5 Raynes Ct,**  
**Hawes, DL8 3UW**  
**☎ 07921 058803**



## Concert at Hardraw Church

We were looking forward to an uplifting evening of music by The Ayrton Family on Saturday, November 23rd.

Unfortunately the weather intervened and after much deliberation we decided our only option was to postpone the event. The persistent rain, plus snow melt made the roads impassible and dangerous by mid afternoon and the safety of the performers and those attending was our priority. Hence our decision.

"Watch this space". We will be setting a new date for the concert in 2025 and look forward to welcoming you to this event.

Your local family owned Coach Opera-



### COACH HOLIDAYS and FULL DAY EXCURSION PROGRAMME

Call 015242 41330 for our current brochures or  
visit our website to view up and coming Holidays  
and Day Trips

Email: [enquiries@bibbys.co.uk](mailto:enquiries@bibbys.co.uk)

Website: [www.bibbys.co.uk](http://www.bibbys.co.uk)

## Askrigg Ladies Sing For Pleasure and members of East Witton Male Voice Choir

invite you to join them in celebrating

### Christmas Music and Song

on **Saturday, December 14th** at  
**7.00pm** at Askrigg Church

followed by a bring and share supper

Christmas songs by the choirs  
and your favourite carols for all to sing.  
Proceeds to Church Funds and Local  
Charities

## Applegarth Couture

[www.applegarthcouture.co.uk](http://www.applegarthcouture.co.uk)

Made to measure  
Wedding, evening and daywear,  
tailoring and alterations.

Contact: Rebecca Atkinson,  
Aysgarth

01969 629398 or 07521 030870



### HAIR, NAILS AND AESTHETICS

All ladies and gents hair  
services

Manicures and Pedicures

I Nails Express

Thread Vein Removal

Skin Tag Removal

Tel Hawes 01969 667449

[info@twistedah.com](mailto:info@twistedah.com)

## DALE HEAD GARAGE

Town Head, Hawes

**Tel.01969 667483**

Fuel Available 24/7

## D BUSHBY

### Joiner/Cabinet Maker

Doors, windows, staircases etc.  
made to measure.

Skirtings, doors, shelves fitted and  
many more odd jobs.

For a prompt and efficient service ring

**David Bushby: 01969 666048 or  
07980 201579**

## WANTED - SCRAP CARS AND COMMERCIALS

FREE collection from all areas.

[www.scrapcarmcumbria.co.uk](http://www.scrapcarmcumbria.co.uk).

**07825 293099**

## Mystery Picture

Last month's Mystery Picture was of a vent on the roof of one of the railway carriages at the Dales Countryside Museum. Is this the smallest gate style in Wensleydale? Where would you find it?



## Tuesday Hawes Fish Market

Also door to door delivery every **Friday**. Pre-order or just turn up on a **Friday** at

Askrigg Stone Cross. **9.30am to 10.45am**

Bainbridge playground. **11.00am to 11.30am**

West Burton **12noon to 12.30pm**

Thornton Rust W.I. Hall **12.45pm to 1.00pm**

Mobile **07711 989590**

Facebook Hawesfishmarket;

Email Hawesfishmarket@gmail.com

## FOR ALL YOUR SEWING NEEDS

Contact. Sheila Kearton at

Woodhall, Askrigg

Alterations and custom soft furnishings

CURTAINS, ROMAN

BLINDS, CUSHIONS

DRESSMAKING AND

REPAIRS



Tel **01969 663484** or **07800 576925**

## A Big Thank You

On October 26th this year Mal Carruthers presented 'Music from The Movies 2' to a packed church attended by locals and visitors from far and wide. The event is part of ongoing fundraising events for the much-needed restoration of the organ at St. Margaret's, Hawes. Mal was joined by Amy Cockett whose wonderful vocal performance ranging from 'Goldfinger' to the haunting 'Now We are Free' from the film 'Gladiator' wowed the audience, and all ably supported by Mal on the organ. In addition, Dave Clark gave a very powerful performance of the title track from the film 'Born Free'. Mal also presented a wide and varied selection of solo items on the organ including the themes from 'E.T.', '633 Squadron' and 'The Magnificent Seven'. As usual he was again superbly supported by Mike Hirst with his seamless accompaniment of visuals.

The positive feedback since the concert has been overwhelming and even more so, the amount of money raised - a staggering £1,350 all of which is ring-fenced for the restoration fund. A huge thank you to all who supported the event and for their generous donations. A big thank you also to Amy and Wensleydale Vets, together with J.W. Cockett and Son, Hawes for their kind sponsorship of the event.

Mal, Amy, Dave and the Askrigg Handbell Ringers will present 'The Magic of Christmas' an afternoon of seasonal and festive music on **Saturday, December 7th at 2.00pm**, in St. Margaret's Church, Hawes. For full details see page 27.

**O'REILLY**

Chartered  
Accountants

At O'Reilly's we provide a broad range of accountancy and taxation services to our clients.

Our friendly and approachable team are dedicated to delivering a high standard of service throughout the year.

We act for many individuals and businesses with different levels of complexities.

For more information visit our website at [www.o-reilly.co.uk](http://www.o-reilly.co.uk) or contact us on **01969 667428** to arrange a free initial consultation.

## Kathleen Iveson

Roger, Mary and family would like to thank everyone for their kind words, cards and flowers following the loss of mum.

Donations totalling £350 have been gratefully received by Yorkshire Cancer Research.

Thanks to Richard Sanderson and The Wensleydale Pantry.

## Withywood Stores

West Witton



### Proud to stock local produce

Fresh bread, cakes and savouries

Local milk, dairy and cold meats, fresh fruit and vegetables

Masham sausages, free range eggs, honey made in West Witton

Selection of wines, Wensleydale Brewery ales

Newspapers, magazines, stationery and greetings

cards. Selection of household items. New lines added weekly.

Please support your village shop, to keep it secure for the future.

**Opening: Mon-Friday 8am-6pm**  
**Saturday 8am-6pm**  
**Sundays 8am-12 noon**



**FREE QUOTES**

**Carpets • Laminates • Vinyls • LVT**  
**Solid & Engineered Wood • Accessories**

## For All Of Your Flooring Needs!

NH Flooring in Richmond can fit quality flooring to any Houses, Apartments, Offices, Holiday Lets, Hotels, Pubs, Vans and anywhere else you want it.

### We offer a complete flooring service including:

Supplying, Fitting, Screeding & Levelling,  
 Repairing, Uplift & Removals, Trimming,  
 Edge Whipping, Cladding and much more.

## NH Flooring - Richmond

[www.nhflooring.co.uk](http://www.nhflooring.co.uk) 01748 822834

Unit 6 Borough Court, Borough Road, Richmond. DL10 4SX

## Reeth Memorial Hall

To everyone who has been to the hall over the past year for an event, a class or some other reason thank you from the Memorial Hall committee. Your support helps us to look after and maintain this village resource.

We wish you all a peaceful and happy Christmas.

We have a varied programme of concerts lined up for 2025. There will be Blues Music, Roots, World Music, Folk, An Abba Tribute, Springsteen Tribute and a Christmas show. As a lot of the names will be new, you could have a look or listen beforehand, if you have the online facilities.

Our last concert for 2024 is **Friday, December 6th** – Jackie Oates and John Spiers – Christmas Show

The duo meld their love of English folk tunes and songs with their fine voices and expertly played instruments in a festive concert featuring traditional Christmas carols and tunes from England and beyond. Tickets £16 (£18 door). Tickets for concerts are available from Reeth PO or phone **Glen Steward (01748 884989)** or visit [www.reethmemorialhall.co.uk](http://www.reethmemorialhall.co.uk) – tickets half-price for under 16s. All concerts **8.00pm** unless otherwise stated.



**Leyburn Methodist Hall**

**Every Wednesday 9am, 4.30pm & 6pm**

touching hearts, changing lives

No need to book

Just come along and start your journey to a slimmer you.

Call Helen for more info **07969 559998**

## Better Health Massage

Mobile Therapist, 8am to 8pm, 7days  
 Improve overall general well being, inside and out.

**Ruth Boddy** MFHT, ITEC Dip. Massage  
[ruth@betterhealthmassage.co.uk](mailto:ruth@betterhealthmassage.co.uk)

Fully qualified and insured

**07773 781803**



[www.betterhealthmassage.co.uk](http://www.betterhealthmassage.co.uk)





## Blueboxt December Update

November has been a fine balancing act! Finding time to reflect and celebrate while preparing for the festive season. Leyburn Jazz Festival saw record audience attendance and superb performances across varying styles. A personal highlight was BlueBoxt's Alumni Jack Pearce and graduate students from Leeds Conservatoire - they will be back in 2025! Wensleydale Camera Club have captured some amazing images of the performances (see [leyburnjazz.org](http://leyburnjazz.org)).

Volunteers and donors are an essential element of the festival's growth and success – thank you to everyone who help make our events run smoothly. We had a lot of fun being part of Wensleydale's Got Talent at Wensley Church - congratulations to everyone who took and made it such a memorable community event.

Grand Prize Draw (2024) - "We need a bigger bucket!" was the cry from Trustee, Philippa Stanyon. "Volunteers have again been amazing - over 1,600 tickets sold to support the Charity's work!" The winning numbers are: 0027, 0315, 0406, 0592, 0625, 0724, 1013, 1330, 1389, 1417, 1458, 1475, 1477, 1512, 1872.

### December and January Events:

Santa's Spectacular - BlueBoxt Productions present a magical Christmas adventure for all ages. Tinsel McJolly will be your host. There will be festive crafts to make and take home. Write a letter and post it to the North Pole. Make a wish to hang on the magic wish tree. Mother Christmas always has time to share a festive story. It's a busy time for Father Christmas helping in the toy-making workshop and getting the sleigh ready for the big night. He loves to hear everyone's Christmas wishes and have his picture taken.

There are various performance times each day on **Saturdays, December 7th, 14th and 21st, Sunday 22nd, Monday 23rd and Christmas Eve, Tuesday, December 24th**. Full details and booking at [www.santaspectacular.org](http://www.santaspectacular.org), **01969 745810** or [info@santaspectacular.org](mailto:info@santaspectacular.org).

A Magical Christmas Concert takes place on **Saturday, December 7th at 7.00pm** at Thoraby Village Hall and **Sunday, December 15th at 2.00pm** at Leyburn Arts and Community Centre. Colin Bailey will be joined by Gail Barlow, Mick Yare and young performers from the Play>Record>Perform project.

Christmas Together Concert with Light My Choir and The Pearls (Margaret Forward, Sarah Allison and Jill Lundberg) takes place on **Saturday, December 14th at 2.00pm** at St. Matthew's Church, Leyburn.

### Christmas Holiday Activity Afternoons:

Join us for two afternoons of creative fun at Leyburn Methodist Church Hall on **Thursday, January 2nd and Friday, January 3rd from 1.00pm to 5.00pm**. We'll be letting our imaginations take centre stage as we magically bring puppets to life! There will be opportunities to make puppets, be part of a puppet show and even take your puppets to a New Year Party. Sessions will be free for FEAST Voucher holders, subject to availability. (Vouchers are issued by schools or North Yorkshire Together). Places cost £20 per child which includes healthy snacks and tea-time meal.

You can call or text our box office and enquiry line on **01969 745810** or email [info@blueboxt.org](mailto:info@blueboxt.org), [www.wensleydale.org](http://www.wensleydale.org), [www.blueboxt.org](http://www.blueboxt.org), [www.santaspectacular.org](http://www.santaspectacular.org).



## Visitor Centre

Christmas Menu served  
**18<sup>th</sup> Nov – 31<sup>st</sup> Dec**

**Wensleydale Cheesy Afternoon Tea for Two**  
served from **4<sup>th</sup> Nov**. Call or book online.

**Christmas shopping nights, 5-8pm,**  
**12<sup>th</sup> and 19<sup>th</sup> Dec.** Discounts, mulled wine  
and mince pies. Calvert's open until 7pm.

### Cheese Experience

Children go **FREE** at weekends and school holidays.  
Groups of 15 or more go **FREE** using code  
**GROUP24**, see T and C's on our website.

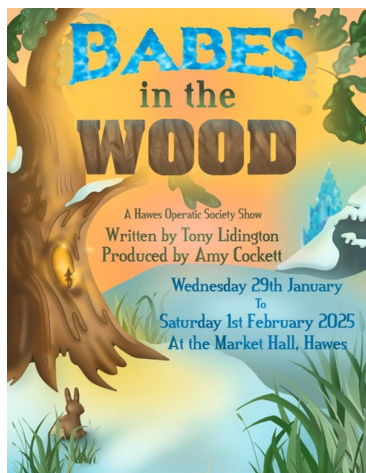
### NEW in Calvert's

Enjoy our **January Dine out specials** and Family  
Dine out menus. See our website.

**wensleydale.co.uk 01969 667664**

## News from Hawes Amateur Operatic Society

We are now busy rehearsing for our next production, *Babes in the Wood*, to be performed at Hawes Market House from **Wednesday, January 29th to Saturday, February 1st. 2025** *oh yes we are!!!* Originally written exclusively for the Georgian Theatre Royal by Tony Lidington, we are excited to have the opportunity to adapt this magical pantomime which follows the story of two princes on their quest to defend the throne from their evil Uncle, Baron Van Rentle - *boo!!!*



Tickets are available for purchase online via: <https://www.ticketsource.co.uk/hawes-pantomime>. This is the best way of obtaining the performance of choice. There are various options for Adult and U16 tickets and bundles including souvenir programme, ice-cream and sweets. The programme will be £2 in advance (£2.50 on the door) and will have a lucky number for a draw taking place during the Saturday evening performance - *good luck!*

Each show will have 4 wheelchair spaces available and the opportunity to upgrade seats for the front two rows and raised areas. For those lovely peeps without internet access, we strongly suggest you ask family or friends to go online on your behalf or, as a last resort, as we cannot guarantee your choice will be available, please get someone to email [haos.sar@proton.me](mailto:haos.sar@proton.me) and leave your name and contact details for us to get back to you.

Calling all knitters, carpenters and joiners.

If you'd like to knit some snowballs for audiences to throw at us, we would welcome your donations. Packs of wool, etc, are available from The Alchemist's Cottage, Feather and Fern, Forever Growing Children's Clothing and Whites of Wensleydale, or please contact **Fran on 07975 631710**. Free animal face masks for children to colour in and wear to the panto will also be available from these shops too for extra fun!!!

We are also looking for carpenters or joiners who would like to offer their time and expertise with the stage construction and scenery. Please contact Mark at Laburnum House if you can help. Our thanks in advance and to all the shops mentioned above plus Gill who has kindly donated the white wool for the snowballs.

Souvenir programme adverts.

If any local business has not received a letter from us and would like to take out a half-page advert, please email [suzanne.excell@hotmail.com](mailto:suzanne.excell@hotmail.com) for an application form. We are asking for a minimum £30 donation.

The Committee thank you for your ongoing support and wish everybody a Happy Christmas and a Peaceful Panto New Year!

### S Peacock Woodwork and Decorating

- Fitting of skirting/architrave, doors, shelving
- Wood panelling •Bespoke Furniture
- Painting •Wallpapering

Contact Shaun on: **07794 246392**

Email: [shaunpeacock1983@gmail.com](mailto:shaunpeacock1983@gmail.com)

### JOHN & TED DINSDALE

Builders - Roofers - Renovations - Extensions

*All aspects of property maintenance.  
Fireplaces, Wood Burners supplied and fitted*

**01969 667 718 ~ 07511 424 865**



## Heavens Above

The three brightest planets, Venus, Jupiter, and Mars, put on a great show in the evening sky this winter. Venus, easily the brightest of the trio, is a dazzling sight low in the south-west straight after sunset. It stays with us until next March, growing brighter and brighter as it climbs higher in the sky - a beautiful Christmas Star right through the festive season. Mighty Jupiter, second only to Venus in brightness, is visible all night long, high in the south by the middle of the evening in the constellation of Taurus the Bull. It's at its brightest on **December 7th** at opposition, the day the Sun, Earth and Jupiter lie in a dead straight line and the planet's disc is fully illuminated by the Sun. Good binoculars will show you Jupiter's four biggest moons - there are over 90 others - as they shuttle around the giant planet from night to night.

Mars doubles in brightness this month as it also heads towards opposition on **January 16th** next year when it will be at its closest since 2022. It rises early on in the evening and stays visible all night long in the constellation of Gemini, the Celestial Twins. A little before sunrise in early January you might just be able to spot tiny Mercury, the closest planet to the Sun, very low in the south-east.

Unfortunately most of this year's major meteor showers have been washed out by strong moonlight. Sadly, it's going to happen again this month, when the annual Geminids shower reaches its peak on the night of

**December 14th/15th.** Luckily the Moon sets fairly early (around **8.30pm**) when the Quadrantids shower reaches maximum on **January 3th and 4th** so it should be a really excellent year for spotting a good few of these colourful shooting stars.

The long dark nights are back again (don't worry they get shorter after the solstice on **December 21st**) bringing the winter stars back into view. By mid-evening the southern sky is dominated by Orion and his retinue of brilliant constellations - Taurus, Canis Major and Minor, Gemini, and Auriga the Charioteer. Orion, the Mighty Hunter of the old Greek myths, is easily the most famous of all the constellations. His distinctive upright figure contains ten of the brightest stars in the sky and is very easy to recognise. See if you can spot orange-tinted Betelgeuse marking his right shoulder and the sloping line of three brightish stars forming his 'Belt'.

Below the middle Belt star lies Orion's Sword, a vast cloud of interstellar gas and dust which shows up well in binoculars. Following the Belt stars upwards takes you to two other fine binocular targets - the Hyades and Pleiades star clusters; following them downwards brings you to Sirius by far the brightest star in the heavens. On a clear dark and moonless night you'll see the winter Milky Way running down eastwards from Orion and Sirius towards the south-eastern horizon. A glorious spectacle on a sparkling frosty night. Best wishes and clear skies for 2025.

**Al Bireo**

## Arena Physio and sports rehab.

physiotherapy & sports rehabilitation clinic

**Assessment, treatment and rehabilitation of  
musculoskeletal pain, injury and dysfunction.**

### **Appointments available at:**

Carperby Football Club, Carperby,  
Leyburn, North Yorkshire. DL8 4DJ.

or

Darlington Mowden Park RFC  
Darlington Arena, Neasham Road,  
Darlington. DL2 1DL

**Tel: 01325 728092 Mob: 07799767075**

**www.arenaphysio.co.uk**



Village Pub, Restaurant and Hotel

Located in Askrigg, in the heart of Wensleydale

**12 Comfortable En-Suite Bedrooms**

*Double & Twin Rooms*

**Pub & Restaurant**

*Great Food and Drinks*

**Private Car Park**

**Beer Garden**

Main Street | Askrigg | DL8 1HG

01969 650515 | info@middlehouseaskrigg.co.uk

www.middlehouseaskrigg.co.uk

## News from the Central Dales Pharmacy, Hawes

### Festive Opening Hours

We will be closed on Christmas Day, Boxing Day and New Years Day. Otherwise open **9.00am to 5.30pm** as normal.

We still have wide availability for anyone still to receive a free NHS winter flu vaccination or COVID-19 booster vaccination. These are available to book via [www.nhs.wintervaccinations](http://www.nhs.wintervaccinations) or come along to one of our walk in sessions, available **Monday to Saturday between 10.00am and 1.00pm, and between 2.00pm and 4.00pm.**

Ask us about:

NHS Prescription Dispensing Services | Free Blood Pressure Checking for over 40s

NHS Oral Contraception Prescribing and Supply | NHS Pharmacy First | Travel Vaccination Service.



### James Peacock **SOLID FUEL** **MERCHANT Bainbridge**

Good quality fuels at competitive prices.  
Smokeless Fuel, Logs and Sticks all available.  
Deliveries in Wensleydale, Swaledale and Coverdale. No delivery too small.

### James Peacock **PRIVATE HIRE** **Bainbridge**

4-8 seats, Airport runs, pubs, stations, walking or cycling holiday, luggage transfers.....

**Tel: 01969 650212 / 650465**

Email: [info@james-peacock.co.uk](mailto:info@james-peacock.co.uk)

Web: [www.james-peacock.co.uk](http://www.james-peacock.co.uk)

## **COPY SHOP** **PRINTING ~ PAPER** **SCANNING & LAMINATING**

*Wensleydale Press*

Burtersett Road, Hawes **01969 667575**  
[wpress@tiscali.co.uk](mailto:wpress@tiscali.co.uk)

## UPPER DALES HOME CARE



Home care services are specifically designed to provide assistance with daily living activities in the comfort of an individual's home.



### OUR SERVICES



Help at Home  
Includes:

Cleaning  
Laundry  
Light Chores  
Meal Prep



Company &  
Support:

Companionship  
either in person  
or by phone



Carers' Break  
Sitting Services:

Support for those  
caring for loved  
ones



**CONTACT US**  
01969 667400  
or 07817 711227



**VISIT OUR WEBSITE**  
[www.udcp.co.uk](http://www.udcp.co.uk)



**Yore Mill**  
CRAFT SHOP & GALLERY

We have a wide selection of artists and makers from Yorkshire and across the North of England overlooking the beautiful Aysgarth Falls.

Check our website for further details and opening hours.

**Yore Mill, Aysgarth DL8 3SR**

Web: [yoremillcraftshopandgallery.co.uk](http://yoremillcraftshopandgallery.co.uk)  
**01969-662829**

## **Cumbria Stove Centre**

Supply and installation of wood,  
coal and gas stoves.

- ◆ Flue and chimney lining services.
- ◆ Inglenook specialists.
- ◆ Fully qualified and experienced Hetas engineers

**01539 821061 (day) - 01539 625227 (eve)**  
**SHOWROOM: 34a, Main Street, Staveley**

**DECEMBER and JANUARY  
WHAT'S ON LISTING;  
please add these dates to your  
Diary**

**December**

- 4 Friends of the Dales online talk. 5.00pm.
- 6 Dominoes. Carperby Institute. 7.30pm.
- 6 Charity Bingo. Askrigg Village Hall. 7.00pm. See p.10.
- 6 Reeth Memorial Hall. Folk Concert. 8.00pm. See p.15.
- 7 Bainbridge W.I. Christmas Coffee Morning. Sycamore Hall. 10.30am. See p.37.
- 7 Christmas Concert. St. Margaret's, Hawes. 2.00pm. See p.27.
- 7 Hawes Christmas Lights Switch -on and Santa visit. 4.00pm. See p.23.
- 7 Swale Singers Concert. St John's, East Witton. 3.00pm. See p.33.
- 7 Magical Christmas Concert. 7.00pm. Thoraby Village Hall. See p.16.
- 8 Hawes Silver Band Christmas Concert. Hawes Market House 3.00pm. See p.22.
- 8 BAWB PTFA Christmas Fair, Askrigg Village Hall. 10.00am-3.00pm. See p.9.
- 9 Whist Drive. Gayle Club. 7.30pm. See p.26.
- 10 Churches Together Advent Taizé Service. Gayle Chapel. 1.00pm. See p. 12
- 12 Charity Coffee Morning. Gayle Institute. 10.00am to noon.
- 14 Christmas Together Concert. St Matthew's Church, Leyburn. 2.00pm. See p.16.
- 14 Askrigg Ladies and East Witton Choir concert at Askrigg Church. 7.00pm. See p.13.
- 15 Magical Christmas Concert. 2.00pm. LACC. See p.16.
- 15 Hawes Junction Chapel. Carols. 2.30pm. See p. 28.
- 18 Luncheon Club. Noon. Street Head Inn. See p.39.
- 20 u3a Talk. 10.30am. LACC. See p.12.
- 31 Closing Date for Yorebridge Education

Student Grants applications. See p.11.

**January**

- 2, 3 Holiday Activity Afternoons. 1.00pm to 5.00pm. Leyburn Methodist Church Hall. See p.16.
- 3 Dominoes. Carperby Institute. 7.30pm.
- 8 Hawes Christmas Lights coming down. See p.4.
- 9 Charity Coffee Morning. Gayle Institute. 10.00am to noon.
- 11 Paul Sowden concert at LACC. 7.30pm.
- 15 Local History Group talk. 2.00pm. Harmby Village Hall. See p.31.
- 15 Penhill Ladies meeting 7.30pm. Carperby Village Hall.. See p.28.
- 15 Charity Bingo. Fountain, Hawes. 7.00pm. See p. 39.
- 15 Bellerby Study Group talk. .
- 17 u3a Talk. 10.30am. LACC. See p.12.
- 22 Friends of the Dales online talk. 5.00pm. See p.12.
- 22 Bellerby Study Group talk.
- 29 - Feb 1. Hawes Panto. See p.17.

**More Christmas Greetings**



**Karen and Tim** at Sycamore Country Store wish all their customers, suppliers and supporters a very Happy Christmas and a Healthy and Peaceful New Year. Come and see what we have to offer in 2025.

**Marilyn and Barry Cruickshanks** wish all friends and neighbours a Merry Christmas and a Happy New Year.



**Julia Harrison** would like to wish all her family, friends and neighbours a very Happy Christmas and a Peaceful 2025.





## News from Dales Countryside Museum

Opening times: Daily **10.00am to 4.00pm** November and December. Closed **Christmas Eve to Boxing Day** and **January 1st and 6th to 31st**. Last entry one hour before closing.

Contact: [hawes@yorkshiredales.org.uk](mailto:hawes@yorkshiredales.org.uk) or call **01969 666210**.

### **Storyland: Pathways Through Time - Until January 5th.**

We have been receiving lovely feedback on this exhibition by artist Penny Hunt. *"Wow! I have learnt so much about a subject I knew nothing about, on my doorstep. Beautifully presented too. Loved the artist's input and her use of materials in her work"*. Drovers once travelled through the Dales, trusted to take a whole village's cattle from the wilds of northern Scotland on a long trek along the drove routes, to the fattening grounds of Norfolk, to be sold in London markets. Penny's stunning landscape paintings reflect the colours of the plaid the men wore, little clues to the treasures they carried and items from modern life found along the ancient tracks. Artwork is for sale both as originals and as prints and cards. The exhibition will end on **January 5th**, so do call in to see it.

### **Yorkshire Dales Young Archaeologists' Club:**

The club meets once a month on a Saturday morning, **10.00am - noon**. Our meeting in November was here at the Museum. The group made use of the pottery finds that they'd washed



at a previous session to create some amazing coasters and hangings. They really made the most of the different pottery colours, textures and patterns. Young people aged 8-17 years are welcome to come along for a

free trial session and the next opportunity to do this will be in January 2025. Please call **01969 666210** or email [dcn@yorkshiredales.org.uk](mailto:dcn@yorkshiredales.org.uk) if your child might be interested in joining us.

## **Education and community engagement:**

Children have been getting hands on with objects this month and one school has used our past toys handling box as part of a teatime get together for children and grandparents.

Leck St. Peter's school have said that *"The content of the workshops was excellent and complemented our topic perfectly. The sessions were exciting for the children, they loved looking through the evacuee suitcases and trying to work out whose it was. It was a brilliant experience for them to make food using rationed items and having to barter and exchange with each other. Jane has a great rapport with the children and explained things simply for our year 3s, but with extra detail for our Year 6s. It was great to be able to use the classroom all day, for our sessions and for lunch. We also enjoyed sketching the WW2 items from the loan box and were able to explore the other exhibits around the museum, including the train."*

If you'd like your class to be able to explore real objects, or to take part in one of our free learning sessions either here at the museum or in school, do get in touch.

**Volunteers:** Our volunteer team has been busy building an arch to display a keystone from a mine entrance, one of the many objects transferred from the Yorkshire Dales Mining Museum in Earby. Two new volunteers have joined our team and are going to be working with others on the collections, researching the archives and helping with visitor surveys. If you'd like to get involved, do get in touch via [dcn@yorkshiredales.org.uk](mailto:dcn@yorkshiredales.org.uk).

**Cards for Good Causes:** Call in and have a browse through the brilliant range of charity Christmas cards available in our shop, helping to generate funding for the many charities involved.

**Dark Skies:** The Yorkshire Dales National Park is a place where you can find the most wondrous star-filled skies, free from light pollution. You can come and explore our planet trail which is part of the Yorkshire Dales Dark Skies Festival running until **March 3rd**.

Our outdoor trail is looking very autumnal and inside we have an Autumn trail for families to spot the odd one out and discover some seasonal traditions with Cyril the Squirrel.

## Church Bulletins – Aug 2017

Whilst searching through some old Newsletters we found this article from 2017 which we had forgotten about and which made us laugh. These sentences have appeared in church bulletins, or were announced at church services:

The Fasting and Prayer Conference includes meals.

Scouts are saving aluminium cans, bottles and other items to be recycled. Proceeds will be used to cripple children.

The sermon this morning: 'Jesus Walks on the Water'. The sermon tonight: 'Searching for Jesus'.

Ladies, don't forget the rummage sale. It's a chance to get rid of those things not worth keeping around the house. Bring your husbands.

Miss Charlene Mason sang 'I will not pass this way again,' giving obvious pleasure to the congregation.

For those of you who have children and don't know it, we have a nursery downstairs.

Next Thursday there will be try-outs for the choir. They need all the help they can get.

Irving Benson and Jessie Carter were married on October 24th in the church. So ends a friendship that began in their school days.

At the evening service tonight, the sermon topic will be 'What Is Hell?' Come early and listen to our choir practice.

Eight new choir robes are currently needed due to the addition of several new members and to the deterioration of some older ones.

Please place your donation in the envelope along with the deceased person you want remembered.

The church will host an evening of fine dining, super entertainment and gracious hostility.

Pot-luck supper Sunday at 5.00pm - prayer and medication to follow.

The ladies of the Church have cast off clothing of every kind. They may be seen in the basement on Friday afternoon.

This evening at 7.00pm there will be a hymn singing in the park across from the Church. Bring a blanket and come prepared to sin.

Low Self Esteem Support Group will meet Thursday at 7.00pm. Please use the back door.

The eighth-graders will be presenting Shakespeare's Hamlet in the Church basement Friday at 7.00pm. The congregation is invited to attend this tragedy.

## Annual Christmas Charity Concert

Hawes Silver Band invite you to join them in a musical Christmas Celebration on **Sunday, December 8th at 3.00pm.**

All are welcome, entry is free so we hope that families will come along to listen to festive music and enjoy community carol singing. There will be mince pies and mulled wine.

There will be a Raffle and a contribution to the retiring collection for the benefit of our local community will be much appreciated.

Please note this year's Concert date is earlier than usual in advance of refurbishing work in the Market House main hall.

### **MICHAEL MOORE and SON BUILDER AND PLASTERER** **Family Business Est 1906**

Alterations, pointing, stonework,  
Roof work, garden patios, paths,  
plastering, insulated plaster  
boarding,  
Over-skimming Artex walls and  
ceilings, tiling walls and floors,  
underfloor heating, PVC sash  
windows.

**Tel: 01969 667045**  
**Mob: 07968 684942**

**Hawes DL8 3NS**

# H & M

CRAFTSMEN  
Ingleton | Est. 1987

### **KITCHENS · BEDROOMS · STUDIES**

High Quality, Bespoke Furniture With  
Full Design And Fitting Service



Showroom: Ingleton Industrial Estate, LA6 3NU  
015242 41535 · [kitchensandbedrooms.co.uk](http://kitchensandbedrooms.co.uk)

## Santa's Sleigh Route

**Saturday, December 7th**

Santa will arrive at **4.30pm** but will not stop in the Market Place driving though down the Holme to Town Foot, up the Cobbles to the Market Place.

Back down the Holme, out of Hawes to Old Gayle Lane,

Follow Old Gayle Lane to Gayle Bridge,

To Little Ings Entrance (Flats) to Little Ings

Entrance (Playground)

To Gayle Lane (Entrance Car Park)

Down Gayle Lane to Town Head onto Hawes. Santa will stop outside Cocketts Hotel (Hawes Central) for 30 minutes giving a photo opportunity for anyone.

Gifts will be given out en route – and at the end.

### *Stops*

### *Estimated times*

Opposite Allen's, with Hawes Silver Band and Community Carol Singing 4.00-4.30pm

Santa arrives in the Market Place	4.30pm
Town Foot Car Park	4.35pm
Herriot's	4.40pm
Auction Mart	4.50pm
Gayle Bridge	5.00pm
Little Ings Entrance (Flats)	5.05pm
Little Ings Entrance (Playground)	5.10pm
Creamery Entrance	5.15pm
Gayle Lane (Entrance Car Park)	5.20pm
Cocketts Hotel	5.30-6.00pm

There will also be fireworks on Santa's arrival, from 4.30pm, we hope your pets are not too worried.



## Orthopaedic Massage

Back & neck pain, strains & sprains  
Nerve injuries, sciatica, chronic pain

**Robust Covid-Secure  
procedures in place**

**Clinic in Hawes**

**07975 999373**

Find me on **Facebook** [www.reflex-om.com](http://www.reflex-om.com)

**Hearing loss shouldn't make  
you feel isolated and anxious,  
we are here to help.**



### **For all your hearing needs!**

- Hearing test
- Free hearing aid trials
- Ear wax removal
- Tinnitus assessment and therapies
- Hearing aid repairs and servicing



**CALL 01765 278 744**

8 Queen Street, Ripon, North Yorkshire HG4 1ED  
[info@hearandnowonline.co.uk](mailto:info@hearandnowonline.co.uk)  
[www.hearandnowonline.co.uk](http://www.hearandnowonline.co.uk)



## Sycamore Country Store

*Now Open Inside Sycamore Hall*

### OPENING HOURS:

**MONDAY TO FRIDAY. 9.00 am to 1.00 pm**

Selling a wide range of everyday essentials, including dairy products, fruit & veg, bread, cakes & savouries, sandwiches and sweets



**A personal friendly service for  
'all creatures great and small'**

- Small animal consultations, diagnostics, and surgery
- Budget friendly preventative health care plans for dogs, cats, and horses
- Farm Animal routine work
- Ambulatory equine services
- In-house 24-hour emergency service for small animal, farm, and equine

**01969 422201**

**[www.wensleydale-vets.com](http://www.wensleydale-vets.com)**  
**[info@wensleydale-vets.com](mailto:info@wensleydale-vets.com)**

## Air Ambulance on TV

For those of you who are not already aware a new documentary series about Yorkshire Air Ambulance started on November 1st on Quest TV. Called 'Yorkshire Air 999' this twelve part series is on every **Friday at 9.00pm** and runs until early February 2025, The Quest TV channel is available on Freeview on channel 12. It is also available on Freesat on channel 167, Sky on channel 144, and Virgin on channel 137.

### Marsett Christmas Sing-a-long

At Bainbridge Village Hall on  
**Sunday December 8th at 2.30pm**

Led by Roland Dent with Andy and Irene singing.

Light refreshments to follow.  
Retiring collection for Herriot Hospice  
Care

Hall & Birtles  
-SOLICITORS-



**For all your legal requirements  
offering a full range of services.**  
Hawes DL8 3QL, Tel 667171  
email: [hawes@hallandbirtles.co.uk](mailto:hawes@hallandbirtles.co.uk)  
and at Leyburn, Golden Lion Yard,  
DL8 5AS, Tel 01969 625526.  
email: [Stuart@hallandbirtles.co.uk](mailto:Stuart@hallandbirtles.co.uk)

Regulated and authorised by the  
Solicitors Regulation Authority

## Portable Appliance Testing (PAT)

Hawes DL8 3NT

**Certificates and Reports supplied on  
each appliance tested.**  
**Please call for free quote and advice**

**Wayne Webster 01969 666020  
or 07766 640905**

## Leyburn Arts and Community Centre

Our last film before Christmas will be screened on **Friday, December 20th**. The Centre re-opens on **Friday, January 3rd**. Before then we have the Christmas Party for the Tuesday Club members, a Christmas Lunch for the Lunch Club, a Christmas concert, Christmas films..... you get the idea, December means Christmas!

The new accessible toilets are finally completed after some unexpected and slightly frustrating delays. We are also very pleased with the new flooring in the cafe. It all looks wonderful, clean and smart.

The Community Shed has had its first Repair Cafe and more are being planned. Coffee and cakes were available in the cafe, and it was an opportunity for people to have a look around after the volunteers had worked so hard and can now see the results of all their work.

We also had a visit from our MP, Rishi Sunak, on October 11th. He was very impressed that most of the work had been done by volunteers. He felt the Shed will be an important asset to our local community as we all do too.

We were pleased to see quite a few faces at our recent AGM which is usually a very quiet and dull affair - all business and reporting in response to our charity commission requirements. It was a good opportunity for questions, suggestions and feedback for which the management team are always grateful and of course coffee and Anne's delicious walnut cake!

November was a very busy month. We had Live Theatre, three Musicals, an Exhibition on Screen, a Herriot talk and film with Dr Rosie Page, Live music and the French Film Festival which continues into December.

We are looking forward to having a break! Then fresh energy and enthusiasm for 2025, beginning with our own popular Paul Sowden on **Saturday, January 11th at 7.30pm**.

Healthy Independent and Connected (**monthly, 2nd Friday**) and Carer's Plus (**monthly, 1st Thursday**) coffee morning sessions continue with experts there to help and advise. Free tea/coffee and biscuits will be available.

Best wishes to all for a Happy and Merry Christmas, good health and we look forward to seeing some of you next year.

## Hawes Poppy Appeal 2024

The total raised this year in the Hawes area was £2,065.53. This figure includes approximately £300 collected around Bainbridge and Askrigg due to the fact that no poppies were available there this year. A huge thanks to Beccy Morley for doing this.

St. Margaret's Church have donated £397.40 for which we give a huge thanks. This makes a grand total of £2,462.93. We would like to thank all the shops and business who displayed collection boxes.

Also thanks to the door to door collectors who turn out every year, Jean and Woody, Sara, Sue and Gerry and Hazel. We couldn't do it without them.

**Thanks from Stan and Jen**



### Hawes Countrystore

"For All The Farmers Needs"

**Not Just All Your Agricultural Supplies!**

**Country clothing, work ware & footwear.**

**Pet, equine, poultry, wild bird feed,**

**garden supplies and household goods!**

**Call in & see for yourself!**

**Tel- 01969 667 334 Fax- 01969 667 335**

**Monday - Friday 8am - 5pm Saturday 9am - Noon**

CBAL Fuels- 01524 599 333

Head Office (Carlisle)- 01228 552 650

Hawes @carrs-billington.com

www.carrs-billington.com Follow us






## Bainbridge Vets Ltd

**A comprehensive, friendly veterinary service treating animals large and small 24 hour emergency service.**

### Open Surgery

Monday-Friday 9.00-9.30am and 2.00-2.30pm

Saturday morning 9.00-9.30am  
(appointments available at other times)

**01969 650263**

## WENSLEYDALE TREE HORTICULTURAL SERVICES (Est. 1995)

**DAVID ALLEN (HND Arboriculture)**  
**CHARLIE ALLEN (BSc Arboriculture)**

Fully insured (£5million) professional tree work: felling, crown thinning etc.  
Petrol log splitter and woodchipper for hire.  
Tree stump removal.

Hedge establishment and maintenance.  
Supply/ planting of forest/ ornamental trees.  
Fruit tree maintenance. Weed control services.

**treesinhawes@gmail.com**

**01969 667364 or 07811 576108**

## SANDERSON & CO.

**"Decorating Supplies"**

**DULUX COLOUR  
ADVICE CENTRE**

Scanner Colour  
Matching & Paint Mixing



Stockist of Leading Brands including,  
**Dulux, Crown, Leyland,  
Ronseal, Cuprinol**

Extensive Wallpaper Pattern Library  
Trade & Quantity Discounts Available

**High Street, Leyburn DL8 5AQ**  
**01969 623143**

**Email: sandersonandcoleyburn@gmail.com**

**Also CALOR & Camping Gaz stockist**

Mobile heaters and accessories

Free local delivery



## EDGLEY GARAGE



Edgley Garage, Aysgarth,  
Leyburn, North Yorkshire,  
DL8 3AD

**01969 663094**

**edgleygarage@yahoo.com**

**MOT testing; Full servicing;**

**Air conditioning service;**

**Brakes, clutches and all  
general repairs to vehicles.**



## Craniosacral Therapist

Give your nervous system a break and find healing stillness in a Craniosacral session with Caroline. Clothes on, light touch!

Come to 'Hawespower' wellness retreat near Hawes or have/give a luxury treatment at home. Ideal gift £60

Call/text **07850 421925** for appointment/voucher

Nature helps lessen flood risks - let's harness its power together 🌿

Take our quiz to test your knowledge ✅

Scan me



or text  
hello ousewem 13  
to 87788 137 717



OUSEWEM

Support your business with us! Ousewem is a free service for businesses and individuals who are affected by flooding. We provide advice, support and information on how to reduce the risk of flooding to your business and home. For more information visit [www.ousewem.co.uk](http://www.ousewem.co.uk)



Family run Teashop situated next to the magnificent Aysgarth Falls

Light Lunches ~ Soup & Sandwiches ~ Afternoon Teas

Cakes, Scones, Biscuits & Traybakes

Muddy Boots & Dogs Welcome ~ Card Payments Accepted

01969 663446

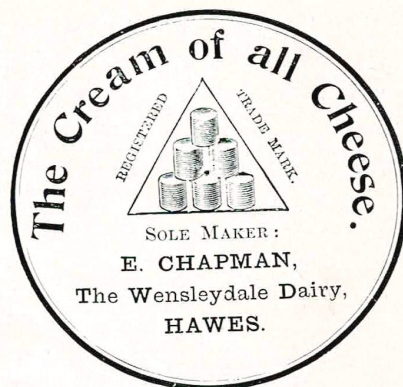
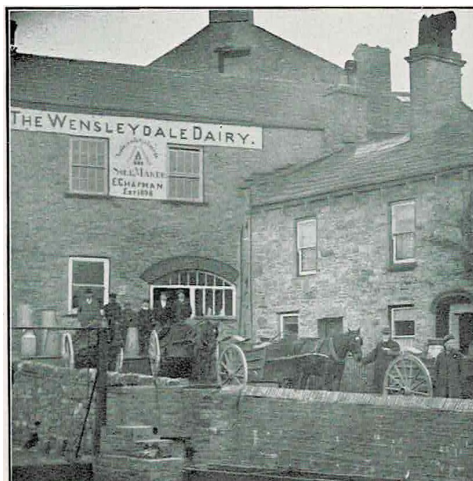
**J. W. COCKETT and SON**  
**Family Butchers**  
Estd. 1854

**Wholesale and Retail Bakers**  
**Main Street, Hawes**  
**Tel 01969 667251**

**Best Quality Meats**  
**High Class Baking**  
**Freezer Orders Supplied**

## Old Photographs and Advertisements

Here is another page from 'Hawes and its Immediate Neighbourhood - An Illustrated Guide for Visitors' which features an early photo of the Wensleydale Dairy and accompanying advert.



MADE ALL THE YEAR ROUND.

Also **Stilton Shaped** and **Flats**. Sizes and Prices on application. Trade only supplied.

## Whist Drives

Held at Gayle Club at **7.30pm** at a cost of £3.50 including tea and biscuits on **Monday, December 9th**. (Xmas whist)

We always welcome new players. Please come and join us.

## The Magic of Christmas

Featuring Malcolm Carruthers (Organ)  
Amy Cockett (Vocals) Dave Clark (Vocals)  
and The Askrigg Handbell Ringers

**Saturday, December 7th 2024 - 2.00pm**  
at St. Margaret's Church, Hawes

Free entry (Donations to the Salvation Army  
Christmas Appeal).

St. Margaret's Church, Hawes is proud to  
present 'The Magic of Christmas', an afternoon  
of festive and seasonal music.

The performance will begin at **2.00pm** and  
will finish in time for anyone wishing to attend  
the switching on of the Hawes Christmas lights  
and to enjoy the music of the Hawes Silver  
Band at **4.00pm**.

There will be a short interval during which  
refreshments will be available. With no entry  
charge for the event, it is hoped that retiring  
donations will be made which will go towards  
the Salvation Army Christmas Appeal. We'd  
love to welcome you to St. Margaret's, so why  
not come along, make an afternoon of it and get  
into the Festive spirit.

## JB TV AERIAL & SATELLITE SERVICES

John Banks  
Proprietor

Telephone: 07891 944175  
Email: johnbankshawes@gmail.com

## WCF Fuels North West



Red Diesel · White Diesel · Kerosene  
AdBlue · IHO · Agamax · Lubricants  
Additives · Fuel Cards · Tank Monitors

Order online at [www.wcfnw.co.uk](http://www.wcfnw.co.uk)  
Email us at: [enquires@wcfnw.co.uk](mailto:enquires@wcfnw.co.uk)  
or call our friendly team on **01524 733669**

## Wensleydale Railway - Polar Express 2024

If you've never experienced the magic of the  
Polar Express, this just might be your crucial  
year. The Polar Express is steaming back to the  
Yorkshire Dales ready to amaze, delight and  
create memories you'll cherish in years to come.  
Get your pyjamas and dressing gowns on and  
your Polar Express tickets in hand and get ready  
to take part in the train ride of your life! A fully  
immersive theatrical experience lies in wait for  
you beyond the station of Leeming Bar at  
Wensleydale Railway – if you just believe.

If you want to go and haven't yet got your  
tickets, then you need to book quickly before  
it's too late. Tickets available at: <https://yorkshiredalesthepolarexpressride.com>. Trains  
run on **5th - 8th, 12th - 15th and 17th -23rd  
December**.

Please note that because of Polar Express  
there will now be no more service trains until  
after Christmas. We are planning to run trains  
on **28th, 29th and 30th December**. see the  
Wensleydale Railway website for more details -  
<https://wensleydale-railway.co.uk/>.

## J. Wilman Property Clearance Solutions

Providing Property Clearance and  
Waste Removal Services in the Dales

Probate, Residential and Commercial  
Clearances, Scrap Metal Recycling,  
Yard /Garden Clearances.

All Work Considered

**Tel 07791656380 or email  
jtw9@live.co.uk for a  
Free No Obligation Quote.**

## The Iron Maiden

*Not enough hours in the day?  
Fed up of never ending ironing?*

My ironing service is definitely a way of buying back  
much needed quality time in a busy life!

**Tracy Hume**  
**07527 796523 or 01969 666048.**  
Can arrange collection/delivery

## Penhill Ladies

Penhill Ladies would like to wish everyone a Merry Christmas and a Happy New Year. Our first meeting in 2025 is on **January 15th at 7.30 pm** at Carperby Village Hall and will be a Quiz night and social evening. All are welcome.

### HAWES POST OFFICE in the Community Office

OPENING TIMES:

9.00am to 5.00pm Monday to Friday

9.00am to noon on Saturday

**Phone number: 01969 667201**

### BAINBRIDGE POST OFFICE

Post Office open at Bainbridge  
in Sycamore Hall 9.00am to 11.00am  
Mondays and Wednesdays

### ASKRIGG POST OFFICE

In Sykes House, Noon to 2.00pm  
Mondays and Wednesdays

### HAWES POST OFFICE

Christmas and New Year Opening  
Times

Monday 23rd: 9am - 5pm

Christmas Eve: 9am - 1pm

Christmas Day and Boxing Day :  
CLOSED

Friday 27th: 9am - 5pm

Saturday 28th: 9am - 12pm

Sunday 29th: CLOSED

Monday 30th and Tuesday 31st:  
9am - 5pm

New Year's Day: CLOSED

Thursday 2nd Jan: 9am - 5pm

### BAINBRIDGE and ASKRIGG POST OFFICES

Closed Christmas Day and New  
Year's Day. Open on Monday 23rd  
and 30th December.

## Hawes Junction Chapel

Mount Zion, Garsdale Head, LA10 5PT

**Sunday, December 15th at 2.30pm**

Carols by Candlelight with Askrigg Ladies  
and Rev'd. Andy Burgess

Light refreshments will be served at the  
close of the service.

## Dales Garage

Services we provide

Exhaust, Diagnostics, Brakes, Welding, MOT,  
Suspension, Timing Belts, Clutches, Batteries,  
Tyres, Services. All makes and models.

Unit 2, Hawes Ind Estate, Brunt Acres Road  
Hawes DL8 3UZ



[www.facebook.com/dalesgarage1](http://www.facebook.com/dalesgarage1)

**Call – James 07399 513605**

**Tyler 07376 487776**

## YOREBRIDGE HOUSE



Restaurant with Rooms

Bar & Lounges

open daily

Afternoon Tea & Light Bites  
served daily 12-3pm

A la Carte & Tasting Menu  
served Mon-Sat 6-8pm

Sunday Lunch  
served Sundays 12-4pm

01969 652060

[enquiries@yorebridgehouse.co.uk](mailto:enquiries@yorebridgehouse.co.uk)  
Bainbridge, North Yorkshire, DL8 3EE

## D MOORE & M BLACKHURST

BUILDERS



GENERAL  
MAINTENANCE

*All types of building work undertaken  
25 years' experience ~ Free Estimates*

**07772 284602 ~ 07975 897715**

3 Woodburn, Hawes. 01969 667505



## Notes from Thorney Mire

### Late Autumn

I wish I could tell you about the exotic and exciting wildlife I had seen on a recent trip to America, but I can't, because I only saw what I could see at home. This was probably because I was on the road a lot and visiting cities. Travelling along the Freeways there were frequent sighting of birds of prey which looked liked buzzards, but I was too far away to see their markings. They were often solitary, sometimes they would be in pairs and occasionally three would circle around together.

The only other wildlife I saw, was in the gardens of the Texas State Capitol Building in Houston. There was a large flock of very vociferous dark coloured birds, which flew from tree to tree, down to the ground and back into the trees again, probably starlings, but these birds seemed to have longer legs and sleeker bodies than the starlings we see at home. In America the starling is known as the European starling as they were introduced from Europe to North America in the 1800s. In the same gardens I saw two grey squirrels. You can imagine the ecstasy I felt at travelling nearly 5,000 miles to see two grey squirrels!

On a more positive note, grey squirrels have not been seen in our wood for the last few weeks. Traps have been set but no squirrels caught, and the camera which was set up in the wood has not recorded any images of greys.

You may have heard on the radio that the Penrith and District Red Squirrel Group think that red squirrels could become extinct if we cannot find another way of controlling the greys as there has been more grey squirrels around this year. Government scientists are working on an oral contraceptive to give to grey squirrels during the breeding season. This contraceptive is designed both for male and female squirrels and would affect their hormones to make them infertile. However the effect is not permanent so subsequent doses would have to be given. The contraceptive would be put into food which would be placed into specially designed feeding boxes, which only grey squirrels can access.

It is estimated that there are 160,000 red squirrels in Britain and only 15,000 of these are in England. Which is food for thought, as I have to remind myself that I am one of the lucky few who can look through the kitchen window and

watch red squirrels leaping around in the trees. In comparison there are 2.5 million greys in Britain. Grey squirrels can cause a lot of damage to trees by stripping back the bark and it is estimated that the financial cost of damage caused by these greys is £37 million a year in England and Wales.

A flock of fieldfares has been seen landing in a field near to us. The jackdaws and rooks have returned to the top wood and our semi permanent resident collard doves, Darby and Joan have returned from their summer vacation.

The cows have been taken from the fields to their winter quarters. Two robins have been squabbling in the courtyard over food. This can mean only one thing, Winter is around the corner, or in the case of this last week, it's on the doorstep.

Looking back over the year it's not been too good for wildlife. There have not been as many birds nesting in our garden this year as previous years. Four swallows arrived in the Spring but only two sat on the wire in the late Summer ready to migrate.

The sum total of butterflies seen this year is two cabbage white, one red admiral and a small butterfly I have still not identified. I have seen two live hedgehogs on the road and fortunately none that have succumbed to traffic accidents.

What has benefited from this cold, sunless summer are the grass verges. Walking along our lane I have felt dwarfed by the grasses. It reminded me of the song from the musical 'Oklahoma':- "The corn is as high as an elephant's eye."

The rose hips on the wild roses have been plentiful this year, but the birds never seem to touch them, they rot on the branches. There was a lovely display of blossom on the rowan and hawthorn trees in the Spring which has produced an abundance of berries this Autumn giving large splashes of red to the trees.

Can anyone tell me why, when there is a surplus of wild berries around that the birds prefer to strip the decorative orange berries from the pyracantha in the garden and the blue-black berries from the berberis?

After all the money you spend on bird food you would think they would show some consideration!

**Sylvia Turner**

## Hawes Yarnbombers efforts recognised by Yorkshire Air Ambulance



*Two of the Hawes Yarnbombers, Ann Sadler and Jane Barrett receiving their award.*

Yorkshire Air Ambulance (YAA) has paid tribute to the Hawes Yarnbombers who have raised more than £18,500 for the charity.

The knitters won the Community Group of the Year award at the charity's annual Recognition Awards held in October at the Cedar Court Hotel, Bradford.

The Hawes Yarnbombers have become local legends for their jaw-dropping knitted installations, transforming everyday outdoor spaces into vibrant displays that capture the imagination of all who see them. These larger-than-life creations, such as their Alice in Wonderland display in 2021, Shrek in 2022, and Wallace and Gromit in 2023, have not only wowed visitors but also raised over £18,500 for YAA. Their unique Wallace and Gromit piece has even found a permanent home at the



## Sykes House in Askrigg Grocery Shop and B&B Shop Open 7 days a week

Enquire for  
B&B bookings at  
[www.sykeshouse.co.uk](http://www.sykeshouse.co.uk)  
**01969 650535**

Wensleydale Creamery, continuing to support YAA in a truly unforgettable way!

The Hawes Yarnbombers group would like to thank Ann, Jane and Colin Taylor for all their help and support with our Mad Hatter's Tea Party, Shrek and friends and Wallace and Gromit displays outside the Board Inn. We would also like to thank Mark and Stewart from Laburnum House for their support with our grit bin display over the last two years. We are very pleased with all the comments from people saying how much they enjoy the displays and we look forward to doing some more Yarnbombing to support YAA, which is vital for this area.

## CHAPEL GALLERY

Work on display from local artists  
and crafters

Coffee and cakes

Dogs and children welcome

Open daily (except Sundays)  
**11am to 4pm**

Burtersett Road, Hawes, DL8 3NP

**Tel: 07474 138536**

[info@chapelgalleryhawes.com](mailto:info@chapelgalleryhawes.com)

[www.chapelgalleryhawes.com](http://www.chapelgalleryhawes.com)



Robin Jessop

## Free Market Appraisals

For Selling & Letting Rural Property.  
Specialists in Selling by Auction.

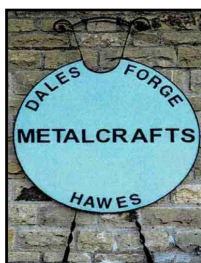
Market Valuations for Tax Planning,  
Lending, Compensation and Council Tax  
purposes

Marwood House, Railway Street, Leyburn  
Tel: 622800

## Middleham and the Dales Local History Group

We are very fortunate to have as one of our committee members a knowledgeable local historian, not only born and bred locally, but also with a taste for the macabre. At our AGM on **Wednesday, January 15th** Denny Gibson will talk about '*A Murder on Your Doorstep*' based on her researches. We meet on the third Wednesday of the month starting at **2.00pm** at Harmby Village Hall DL8 5PH.

Our 2025 programme includes topics such as the Leyburn School Board, Quarter Sessions records, a local pioneering female aviator, and industry in Wensleydale, plus a members' visit. Members, new members and visitors are always welcome, annual membership is still £12 and visitors can attend for £3 per meeting. For more information contact **Tony Keates 01969 640436**, [dotandtonyk@btinternet.com](mailto:dotandtonyk@btinternet.com).



## Dales Forge

Metalcrafts

Tel: 07729 105466

Unit 5, Raynes Court  
Hawes, North Yorks.

[dalesforge@btinternet.com](mailto:dalesforge@btinternet.com)



Swan Farm, Redmire,  
Leyburn DL8 4HA  
**01969 625647**  
[castletimberbuildings@mail.com](mailto:castletimberbuildings@mail.com)  
[castletimberbuildings.com](http://castletimberbuildings.com)

All of our products are hand made to order, from the smallest of sheds to the more elaborate designed summer houses. Our team of experienced joiners and specialists are on hand to advise and guide you, to help get the most of your product.

We aim to deliver the highest quality buildings, tailor-made to your requirements using only the finest quality timber and ethically sourced. You can be reassured that we also care for the environment.

## Christmas Travel Plans

For all Christmas/New Year travel by bus or train, plan early! Check timetables for both day of the week and the date of your intended journey(s). Also, take note of any column headings or footnotes for pre-Christmas, post-Christmas or Bank Holiday travel, or for services that will finish earlier than usual.

December National Rail timetable changes: Route changes (if any) will date from mid-December. If you have booked your rail ticket in advance and the train is delayed or cancelled, you may be eligible for a Delay Repay refund - check the T and Cs.

Christmas bus travel: With participating operators, the £2 maximum single bus fare ends on **Tuesday, December 31st** (New Year's Eve); that's also a day - as on Christmas Eve (**Tuesday December 24th**), when many travel services and office/information phone lines will finish early.

New Saturday bus service (Bedale to Leyburn): Hodgsons No 155 is now running between Bedale and Leyburn (same timetable as Monday - Friday).

All year Sunday DalesBus No 856 (the Wensleydale Flyer): 3 return journeys every Sunday between Northallerton-Bedale-Leyburn-Aysgarth-Bainbridge-Hawes-Gayle: see [www.dalesbus.org](http://www.dalesbus.org). Valid ENCTS bus passes for free travel and One-Way £1.00 tickets for Under 19s on the 856. DalesBus have confirmed that the Sunday 856 will run its usual timetable on **Sundays, December 22nd and 29th**.

## THE HEALING COLLECTIVE

Encouraging health and well being  
with a range of therapies.

*Therapies for animals also available.*

Coach House, Berry's Farm Shop & Café,  
Swinithwaite, DL8 4UH. t.0845 474 2383

[info@healingcollective.co.uk](mailto:info@healingcollective.co.uk)  
[www.healingcollective.co.uk](http://www.healingcollective.co.uk)



## DENTURE PROBLEMS?



Denture Studio

### Are you unhappy with the look or fit of your existing dentures?

**WE CAN HELP**

Our in-house Clinical Dental Technician Mark can provide quality bespoke dentures designed to your individual needs



To Book  
**FREE**  
Consultation CALL  
**01677 422968**

Website: [www.orcharddentallab.co.uk](http://www.orcharddentallab.co.uk)  
Email: [info@orcharddentallab.co.uk](mailto:info@orcharddentallab.co.uk)  
1 The Villas, Bridge Street, Bedale, DL8 2AB



# Home Run

*Pet sitting, House sitting, Dog walking*

I offer a friendly, personalised pet and house sitting service in Wensleydale and further afield.

Nicola – 07866 336924

[nicola@homerundogsitting.co.uk](mailto:nicola@homerundogsitting.co.uk)

[www.homerundogsitting.co.uk](http://www.homerundogsitting.co.uk)



- City & Guilds qualified
- Fully insured ● Certificates issued
- Prompt professional service
- NO MESS - NO FUSS!

**Martin Tradewell**

**QUALIFIED CHIMNEY SWEEP**

**01969 640099**

5, The Row, Horsehouse, Leyburn. DL8 4TT

Email: [martin@daleschimneysweep.co.uk](mailto:martin@daleschimneysweep.co.uk)



## The Yarnbombers' Christmas Displays.

Following on from the Wallace and Gromit displays (see page 30) and for those of our readers who have not visited Hawes centre in the last few weeks here are the Yarnbombers latest contributions to the festivities.

They even went on to become a news item on the BBC News web-site on November 25th.



**W.S.HARTLE**

**FAMILY BUTCHER, WEST BURTON**

Best Quality Meat, West Burton Lamb,  
Homemade Sausages and Burgers,

Free Local Delivery and Freezer Orders

Tel: David on **01969 663302** or visit

[www.hartlebutchers.co.uk](http://www.hartlebutchers.co.uk)



## Swale Singers' Winter Concert

This year our traditional winter concert is being held in the somewhat untraditional setting of Wensleydale... to be more precise, St John's Church in East Witton.

It is in aid of raising funds for the repair and restoration of the church organ, which is a particular fine example made by James J Binns and was installed in 1913. With the passage of time, it is in need of some TLC and Swale Singers has volunteered its services to raise some much-needed cash.

The concert will take place on **Saturday, December 7th at 3.00pm**. The theme will be reflection and remembrance and will feature Edward Elgar's 'The Spirit of England' and 'Towards the Unknown Region' by Vaughan Williams. The conductor will be Peter Stallworthy, with organist Tim Harper who is the assistant director of music at Ripon Cathedral. Louise Wayman will be the soloist.

Entry will be free but there will be a collection during the recital in support of the fund raising. "We usually have our winter concert closer to home in Swaledale but we hope our supporters will join us in East Witton for what we think is a worthy cause", said the Swale Singers chairman Richard Wells. "One of the features of 2024 has been the 80th anniversary of the D-Day landings and we think the programme offers a fitting end to the year."

## CHRISTMAS TREES FOR SALE

**DIRECT FROM THE FOREST**

**Non-drop Nordmann Fir 6' to 8'. Holy Wreathes. Free Delivery.**

**Garage, Market Place, HAWES**  
next to the fish and chip shop  
**667355**

**Music Tuition for all ages with**  
**[www.colinbaileymusic.co.uk](http://www.colinbaileymusic.co.uk)**  
**07711 211169**

**Drums & Percussion; Vocals;**  
**Piano & Keyboards; Music Theory;**  
**'Get Musical' Workshops.**



**TOM ADDISON**

FINE FURNITURE

Fine quality furniture handcrafted in the heart of  
Wensleydale.

**Free standing and fitted furniture designed &  
handmade to your requirements.**



All enquiries welcome: **07585952951**



**[tom@tafinefurniture.co.uk](mailto:tom@tafinefurniture.co.uk) [www.tafinefurniture.co.uk](http://www.tafinefurniture.co.uk)**



## Barn Studio Bookkeeping

Bookkeeping | Tax Returns | VAT Returns  
Company and Sole Trader Accounts  
*Friendly service in the Yorkshire Dales*

**Terry Newman MICB | 07572 842398**  
**[barnstudiobookkeeping@gmail.com](mailto:barnstudiobookkeeping@gmail.com)**

Bolton House, West Burton, DL8 4JU



## M Fothergill

**Building Services**

*All aspects of building work  
undertaken*

**667936 /**

**07966 624649**

**Hawes DL8 3RP**

Plastering Alterations Extensions  
Roof work General Maintenance



**Yorkshire Dales Accountancy**  
Chartered Accountants

## taxation & business advisors

We provide a broad range of accountancy  
and taxation services to our clients.  
Please feel free to contact Martin or Hazel.

E-mail:

**[info@yorkshiredalesaccountancy.co.uk](mailto:info@yorkshiredalesaccountancy.co.uk)**

**Telephone: 01969 678128**

Website:

**[www.yorkshiredalesaccountancy.co.uk](http://www.yorkshiredalesaccountancy.co.uk)**



## Yorebridge Sport and Leisure Centre

The Wensleydale Centre,  
Askrigg.

**Tel. 01969 650060**

### Running Skills and Drills Club

Our Running Skills and Drills club is back up on a **Friday evening, 6.00pm – 7.00pm**, £5 per session. The session is split in two with half an hour of Tempo Runs, Fartlek Runs, Hill Reps, Interval Runs, Running Drills (to name but a few), followed by half an hour of Strength for Runners exercises. These exercises begin with body resistance exercises and continue through the resistance levels.

### Softplay

Did you know we have a dedicated softplay room which is available for hire - £5 per family for two hours, or why not try our monthly subscription £15 unlimited use? Sign up through ClubRight to purchase the pass to gain entry to soft play.

Gym facility and membership – now available through ClubRight gym management system.

We have a variety of gym memberships including monthly, couples, student, and junior memberships, as well as pay as you go passes. These allow you to use the gym in a way that suits you and have a great workout to meet your needs.

Fitness classes - via zoom or live class as indicated: Booking is essential for all classes. Email [admin@yorebridge-sport.co.uk](mailto:admin@yorebridge-sport.co.uk) or telephone **01969 650060**.

Classes are: (£8 pay as you go or class membership option available).

**Fit for Life - Mondays (zoom) 9.15am – 10.15am.** Building and Maintaining Strength to live life your way.

**Warm and Well – Mondays (live) 11.00am.** Enjoy a social, active class building core strength with a nice cuppa and chat afterwards.

**Tennis – Mondays 6.00pm.** Live social tennis weather permitting. Get in touch to join this group. [yorebridgetennis@gmail.com](mailto:yorebridgetennis@gmail.com).

**Walking Circuit – Wednesdays (live and on zoom) 9.15am – 10.15am.** Exercises to keep

active people active.

**Strong and Able – Fridays (live) 11.00am.** Maintain your ability to get out and enjoy life, build muscle tone, stability around movement and keep flexible and mobile around joints. Standing and chair-based exercise.

**High Intensity Bootcamp with Kirsten, (live) Tuesday and Thursday 6.00am -7.00am** – get that morning metabolism boost.

**Running Skills and Drills (£5) with Kirsten, Fridays (live) 6.00pm - 7.00pm.** Half an hour of running skills and drills followed by half an hour of strengthening for runners.

**Over 40's Walking Football (£3) with Glenn, Fridays (live) 6.30pm – 7.30pm** on the MUGA [yorebridgetennis@gmail.com](mailto:yorebridgetennis@gmail.com)

We also offer Conversational French (live) **Tuesdays 9.30am - 10.45am.** Cost is £6 per session.

### Facebook

We are back up and running with our Facebook page '**Yorebridge Sport and Leisure**' Follow us to keep up to date with the news from the centre.

### Fundraising

We have an Easyfundraising account for The Yorebridge Sports Development Association Ltd, it is simple to join, doesn't cost you a penny and will help us to keep delivering. Simply scan the QR code and follow the steps, thank you so much for all your support!



### TEASDALE ELECTRICAL

Your local electrician serving the dales and the surrounding areas

Askrigg

North Yorkshire

**Tel - 07814 184974 (Steve)**

Email - [teasdaleelectrical@icloud.com](mailto:teasdaleelectrical@icloud.com)



## Swaledale Festival Appoints New Artistic Director

Swaledale Festival, the annual celebration of music, arts and walking in the northern Yorkshire Dales, has appointed Fraser Wilson as its new Artistic Director. He takes up the baton from previous director Malcolm Creese, who undertook the role for seventeen years.

He joins the team from the internationally renowned Britten Pears Arts in Suffolk where he was Head of Performance and Public Engagement, closely involved in world-class cultural programmes including the Aldeburgh Festival of Music and the Arts.

Originally from Scotland, Wilson has two decades of arts experience that span the length and breadth of the British Isles. At Sheffield's Music in the Round, the leading national promoter of chamber music, he led learning

and participation; and at Norfolk and Norwich Festival Bridge, he strove to improve cultural education for all 550,000 children and young people in East Anglia.

He also has two decades as a professional music-maker. As a composer/arranger, his music usually involves voices and has been heard in several countries, largely thanks to being associate composer with the choral group Apollo5, and also his work with many other artists. He plays the piano at any given opportunity.

On announcing the appointment, Chairman of Swaledale Festival Dr Susan Miller said: "Under Malcolm's leadership the Festival has grown from a relatively small-scale series of concerts to become the highly successful, wide-ranging and much-respected festival of today, and we would like to pay tribute to his commitment and vision. We are delighted to have appointed Fraser Wilson as our new Artistic Director and are very excited about the next chapter in the Festival's story. We hope you enjoy the journey too."

Commenting on his new role, Fraser Wilson said: "I'm delighted! It is a wonderful festival, in a stunning part of the world, with decades of success behind it and a thriving present. I have great respect and admiration for all that has happened so far.

"The 2025 Festival, programmed by my predecessor Malcolm, is looking fantastic, and I can't wait for it all to get under way. It is exciting to think about where the festival could go and how we can achieve it together. I am looking forward to the adventure of discovering that with the team, with musicians and artists from near and far, with our many visitors, and with the whole Dales community.

"It will be especially important for us to consider who we don't yet connect with, and to bring a warm invitation to more and different people to be part of it. I would like the Festival to be neighbourly in its community, to welcome visitors and creative ideas from far and wide, and to be a source of colour, inspiration and joy – reflecting the unique nature of this place and its people. Many people already see it as a special happening. It is a huge pleasure and privilege for me to be part of its bright future."



**Mike Addison Optician**  
Market Street, Kirkby Stephen,  
**017683 71555**  
Email : [infoks@mikeaddisonoptician.com](mailto:infoks@mikeaddisonoptician.com)

- Providing eye care for all the family
- Private & NHS patients welcome
- Children & over 60's receive free eye examinations
- Supplier of all spectacle & vision related products

or The Shire Hall, Appleby, 017683 53199

Mike Addison FRCO C.  
**OPTICIAN**

**PENNINE**  
**PRINT** □□□□

Full Colour Print  
Invites - Tickets  
Brochures - Leaflets  
Menus  
*all at affordable Prices*

**[simon@pennineprint.co.uk](mailto:simon@pennineprint.co.uk)**  
Tel: 07860 620 411

## News From Sycamore Hall

November has been a relatively quiet month for us, which is possibly just as well as we now anticipate the festive period. Unfortunately, we suffered some flooding in one of those increasingly frequent heavy rainstorms, but thankfully, damage was limited.

We finally managed to unveil our new bench in memory of Val Alderson and were delighted that her family were able to join us for this occasion.

We have an increasing number of keen dominoes players who are enjoying an afternoon game in the lounge. They are always happy to welcome new players so do come along and join them.

We were sorry to learn that Chris and Alice are leaving the restaurant at the end of the year. They have been a fixture at Sycamore Hall for many years now and have contributed greatly to the community here. We will miss them, and their young helpers, but wish them well in the future.

We have just held a coffee morning and collection in aid of The Open Pantry - our local

food bank. We would like to thank everyone for their generosity to help others less fortunate in our area.

Don't forget that before the festivities our small businesses are all stocked up to help you with your Christmas shopping. Come in and have a look at Sycamore Country Store and Mabel and Maisy's Mini Emporium. It's so much easier to do your shopping there than fight for car park spaces elsewhere! Sycamore Country Store is open **Monday to Friday, 9.00am to 1.00pm** (closed December 25th and 26th and January 1st). Mabel and Maisy's Mini Emporium is open **Thursday to Saturday** in line with the Hair Salon opening hours. The Post Office is also here on **Mondays and Wednesdays** between **9.00am and 11.00am** for your postal and banking needs and the library is available all day and has internet access. Pay us a visit.

If you have any queries or would like to discuss the availability of apartments, please contact the Manager, **Nicky Cooper, on 0370 1924055**. So, as we sign-off for 2024, we would like to wish all our residents, staff, families, friends and supporters a very Happy Christmas and a Peaceful and Healthy 2025.



**Hawes**  
**Christmas Trail**  
**30th November - 23rd December**

*Find the hidden tree decorations in  
Businesses windows around Town.  
Tell us which business you found them at.  
Draw a picture of your Christmas Tree  
£2 entry with a free gift for every child  
(1 per sheet)*

**Collect your Trail sheet from:**  
**Forever Growing Children's Clothing**  
**The Alchemist's Cottage**  
**Hawes Community Office**

*Merry Christmas*



**Hawes Silver Band**

invite you to join them  
for Carols, Music &  
Mince Pies  
in  
Hawes Market Hall  
on  
Sunday 8th December  
2024 at 3.00pm

No entry fee - donations  
very welcome with  
proceeds for local  
organisations



## Bainbridge Women's Institute

We are apparently winding-down for the end of the year although you would never know from our crammed diaries.

November has seen us getting about a bit, as usual. Members of our Garden Group made a visit to Holker Hall near Cartmel in Cumbria, primarily for the Christmas Fair, although we did also look around the gardens and the house. It was a lovely day and we were relieved that the weather was good as the Fair is held outside.

Our newly launched Theatre Club members had a fantastic day out in Richmond where we enjoyed a fascinating 'behind the scenes' tour of the Georgian Theatre Royal. What an amazing place, and right on our doorstep. We then adjourned to a nearby restaurant for dinner before returning to the Theatre to watch a performance of 'Blue Stockings', performed by the Richmond Amateur Dramatic Society. It was a great show and a real insight into the issues of women fighting for the same university education as men in the early 20th century. We are now planning our next show which is likely to be in early 2025.

Our Christmas Fair was a huge success and we would like to thank everyone who came along to support it. We had a good selection of local craftspeople selling their handmade wares, along with creations made by our WI Craft Club members. There were delicious refreshments available to enjoy amidst the festive surroundings. This event raised £600 for our W.I. funds which is brilliant, so we hope to make this an annual fixture in our diaries.

The Lunch Club turned into an Afternoon Tea Club in November, allowing us to enjoy a delicious festive Afternoon Tea at Hamilton's in Aysgarth. We really enjoy our visits there, assured of delicious food and amusing entertainment.

The Walking Group enjoyed a gentle walk, from Hawes to Appersett and back, re-charging their batteries with refreshments in Hawes on their return.

Our last Soup and Sweet in 2024 took place in Bainbridge where guests enjoyed the delicious homemade food. We will be planning our 2025 events shortly so look out for details next year. We are holding our Festive Christmas Coffee Morning on **Saturday, December 7th** at Sycamore Hall, Bainbridge, from **10.30am**.

There will be a cake stall, raffle and tombola along with homemade refreshments. Entry is just £3.00 and everyone is welcome! Come along and join us.

If you would like more information about our busy and friendly W.I. or any of our events and activities, please contact our President, **Nicola Robinson on 650801**. We would be delighted to welcome you to our merry throng and can assure you of a warm welcome, lots of fun and plenty of opportunities.



Some thought it was a lamb, others an otter but it was just a piece of wood!

### Alex Kravchenko

BSc (Hons) MChS

**Chiropodist / Podiatrist**  
Member of the Health Professions Council

**Practising at**  
**Yorkshire Foot Clinics**  
**25, Frenchgate, Richmond DL10 4NZ**  
**Bishop Auckland/ Hawes 667449**

**Clinic Tel 01748 850020**  
**Email: yorkshirefootclinics@yahoo.com**



**Unit 2, Store 3,**  
**Washfold Farm,**  
**Leyburn, DL8 5JZ**

**All vehicles catered for**

- \* Servicing, Tyre Supply and Fitting,
- \* Design & Fabrication, Mechanical

**07717 474823**

# Index to Advertisers

	Page		Page
Accountants, O'Reilly, Hawes	14	Logs, Springbank Logs, Hawes	39
Accountancy, Yorkshire Dales	33	Logs, Seasoned Hardwood	9
Advertising Rates and Contacts	40	Lord Automotive	37
Appliance Repairs, Bartlett	39		
Aysgarth Falls Hotel	11	Massage, Mobile Therapist	15
		Middle House, Askrigg	18
Bear Cottage Interiors	3	Music Tuition, Colin Bailey	33
Boiler and Aga Service, M.F.W.	39		
Bookkeeping, Barn Studio	33	Nails, Lashes etc, The Parlour, Hawes	5
Builder and Plasterer, M. Moore and Son	22		
Builder, Dinsdale John and Ted	17	Optician - Mike Addison	35
Builders, Moore and Blackhurst	28	Orthopaedic Massage, Reflex	23
Building Contractor, Andrew Hawkins	6	Ousewem, Flood Prevention	26
Building Services, Fothergill M	33		
Butchers, Cockett, Hawes	26	Pet and House Sitting, Home Run	32
Butchers, Hartle, West Burton	32	Physio, Arena	18
		Plumbing and Heating, Parfitt J	39
Chapel Gallery	30	Plumbing & Heating, Upper Wensleydale	11
Chimney Sweep, Dales Sweep	32	Portable Appliance Testing	24
Christmas Trees for sale, Askrigg	9	Post Office,	
Christmas Trees for sale, Hawes	33	Hawes, Bainbridge and Askrigg	28
Coach Travel and Holidays – Bibby's	13	Print Services, Pennine Print	35
Coal Merchant, Peacock	19	Print Services, Wensleydale Press	19
Craniosacral Therapist	26	Property Clearance Solutions	27
Cumbria Stove Centre	19		
		Scrap Car and Commercial Collection	13
Dales Forge, Metalwork	31	Sewing Needs; Kearton	14
Dales Garage	28	Solicitor, Hall and Birtles	24
Decorating Supplies. Sanderson & Co	25	Solicitors, McGarry	11
Dental Lab, Orchard	32	Slimming World	15
		Sycamore Country Store	23
Edgley Garage, Aysgarth	25	Sykes House, Askrigg	30
Electricians - Teasdale	34		
Estate Agent, Jessop Robin	30	Tailoring - Applegarth Couture	13
		Taxi, Peacock, Bainbridge	19
Fabrics for sale	12	Tea Room, Hamilton's, Aysgarth	6
Fish Market, Hawes	14	Tea Room, Mill Race, Aysgarth	26
Flooring - NH	15	Timber Buildings, Castle	31
Fuel Available, Dale Head Garage	13	Travel Specialists – Sturdy Travel	11
Funeral Directors, Sanderson and Co.	9	TV Aerial & Satellite Services. J.Banks	27
Furniture, Handcrafted, Tom Addison	33		
		Vets Bainbridge	25
Hawes Country Store	25	Vets, Wensleydale	23
H&M Craftsmen, Ingleton	22		
Hairdressing, Edie Peacock	40	WCF Fuels	27
Hairdressing, Twisted	13	Wensleydale Creamery, Hawes	16
Healing Collective, Swinithwaite	31	Wensleydale Tree Services, D. Allen	25
Hearing Tests and Aids	36	Withywood Stores, West Witton	15
Home care, Upper Dales	19	Woodcraft Studio & Timber Services	7
		Woodwork and Decorating. S. Peacock	17
Ironing Service–Tracy Hume	27		
		Yorebridge House Hotel	28
Joiner and Cabinet Maker, Bushby	13	Yore Mill Craft Shop and Gallery	19
Joiner, Solid Joinery Solutions	9	Yorkshire Foot Clinic	37

## Upper Wensleydale Ladies Luncheon Club

The Luncheon Club will meet on the **18th December** at the Street Head Inn at **noon for 12.30pm** lunch and entertainment from Colin Bailey.

Why not come along and join us? We are a small group and would make you very welcome.

There will be no meeting in January. The next meeting will be on **February 26th**. Anyone wishing to join please contact **Ray Wilkinson** on **01969 663613**, or **Sue Ryding** on **01969 663551**.

**Dales Charity**



**Wednesday 15th January 2025**

**The Fountain Hotel, Function Room,**

**Hawes**

Entry from 7.00 pm, for  
Eyes down at 7.30pm

**Entry £6**

**BARTLETT  
& ELECTRICALS**

| Domestic Appliance Servicing |  
| Installation |  
| Electrical Services |  
| Repairs |  
| Sales |  
| All makes and models |

[www.BartlettElectricals.co.uk](http://www.BartlettElectricals.co.uk)

Tel : 07920 401042

Email: [Ben@BartlettElectricals.co.uk](mailto:Ben@BartlettElectricals.co.uk)

## Mencap Survey on Public Transport

Please be aware that Mencap are running the first public transport survey for people with a learning disability. If you have a learning disability, we would like to hear about your experiences using public transport. We would also like to hear about how this impacts your wellbeing, access to your community and access to work. You can access the survey at <https://www.mencap.org.uk/learning-disability-explained/research-and-statistics/big-public-transport-survey>.



## Seasoned Firewood Logs For Sale

Hardwood and Softwood available.  
Bulk Bags, Bulk Loads and smaller  
bags available, also kindling bags.  
Can deliver locally – Hawes Area

**01969 667916** after 5.00pm

**Mobile: 07974 507825**

any time; P.O.A



## J.Parfitt Plumbing & Heating Ltd

All aspects of domestic / commercial  
plumbing and heating work undertaken

Phone: **01969 650665**

Mobile: **07882 005261**

[www.parfittplumbing.co.uk](http://www.parfittplumbing.co.uk)

## MFW Aga & Boiler Services

Specialising in the servicing of Aga / Rayburn  
cookers and domestic oil boilers.

All Dales area covered

For service please contact Mike on:

Phone: **01609 779751** Mobile: **07731 349276**

# CINEMA in Leyburn

Tue 3<sup>rd</sup> Dec – 7:00pm **Junkyard Dog** (N/C 15+) *French Film Festival*  
Fri 6<sup>th</sup> Dec – 6:00pm **Ladies in Lavender** (12A)  
Thu 12<sup>th</sup> Dec – 7:00pm **Divertimento** (N/C 15+) *French Film Festival*  
Fri 13<sup>th</sup> Dec – 6:00pm **Hundreds of Beavers** (12A)  
Fri 20<sup>th</sup> Dec – 6:00pm **Love Actually** (15)

## Other Events ....

Sun 8<sup>th</sup> Dec – 2:00pm **Andre Rieu's 2024 Christmas Concert**  
Sun 15<sup>th</sup> Dec – 2:00pm **BlueBoxt Creative's Magical Christmas Concert**  
Sat 11<sup>th</sup> Jan – 7:30pm **60's and 70's New Year Singalong**

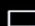

*Our licensed café / bar opens 30 minutes before each performance starts.*

Cinema Prices: £6 Standard / £5 Over 60s & Under 14s Event Prices: £12 Standard / £6 Volunteers



## Leyburn Arts & Community Centre

The Old School House, Richmond Road, LEYBURN, DL8 5DL

 [www.leyburnartscentre.com](http://www.leyburnartscentre.com)  01969 624510



## Edie Peacock Hairdressing At the Parlour

Call: 07817 312906

## Advertising

Boxed adverts: £6, £12, £18  
(dependent on size)

There is a big reduction for six issues or more, so for six issues the totals are:

**£25, £50 or £75**

Greetings etc. £2

What's ons (non-commercial) are free

Contact for adverts:

**Barry Cruickshanks**

**01969 667458**

**[uwnlinput@gmail.com](mailto:uwnlinput@gmail.com)**

*Whilst we try to ensure that all information is correct we cannot be held legally responsible for omissions or inaccuracies in articles, adverts or listings, or for any inconvenience caused. Views expressed in articles are the sole responsibility of the person by-lined. Articles by committee members carry just their initials.*

*We appreciate being asked before any part of the Newsletter is reproduced.*

## Postal Subscriptions

If you would like to receive the Newsletter by post every month the cost is £14 per annum. Please pay by BACS (Account 74237721, sort code 51-61-33) and send your full address details to [uwnlinput@gmail.com](mailto:uwnlinput@gmail.com). Or send a cheque for this amount (made out to the Upper Wensleydale Newsletter) plus your details to Karen Jones, Skellgill Cottage, Skellgill Lane, Askrigg, DL8 3JG.

## Published by

The Upper Wensleydale Newsletter  
Lilac House, The Holme, Hawes, DL8 3QR  
**01969 667458**

Email for submission of articles, what's ons, letters etc.: **[uwnlinput@gmail.com](mailto:uwnlinput@gmail.com)**

Newsletters on line, simply search on "Upper Wensleydale Newsletter"  
Archive hard copies back to 1995 are in the Dales Countryside Museum resources room.

**Editors:** Barry Cruickshanks,  
Kevin Davis,

**Committee:** Malcolm Carruthers, Roy Chapman,  
Tony Hutchinson, Alyson Jones, Karen Jones  
(Treasurer), Alastair McLachlan  
Neil Piper, Karen Prudden,

**Founded in 1995**  
**by the late Alan S. Watkinson**

# Your pull-out pages of December and New Year events and greetings

## SPECIAL CHURCH AND CAROL-SINGING EVENTS

### ASKRIGG AND BAINBRIDGE AREA

St Oswald's, Askrigg	Sunday	Dec 8	10.30am	Café Style
	Saturday	Dec 14	7.00pm	Christmas Tree Festival Concert
	Sunday	Dec 15	9.00am	Holy Communion
	Sunday	Dec 22	10.30am	Holy Communion
			5.00pm	Community Christingle
	Christmas Eve		5.00pm	Carols on the Cobbles
			11.30pm	Holy Communion
	Sunday	Jan 5	10.30am	The Gathering
	Sunday	Jan 12	10.30am	Café Style Communion
	Sunday	Jan 19	10.30am	Morning Prayer
	Sunday	Jan 26	10.30am	Holy Communion
St Matthew's, Stalling Busk	Sunday	Dec 8	12.30pm	Soup lunch followed by Afternoon Prayer
	Sunday	Dec 22	2.30pm	Afternoon Prayer
	Christmas Eve		3.00pm	Carols
	Sunday	Jan 12	12.30pm	Soup Lunch followed by Afternoon Prayer
	Sunday	Jan 26	2.30pm	Afternoon Prayer
			3.15pm	Pathfinders
Sycamore Hall	Friday	Dec 6	10.00am	Communion
	Sunday	Dec 22	10.45am	Christmas Carols with Rev. Jo Brown
	Sunday	Jan 26	10.45am	Covenant Service led by Rev. Jo Brown

### HAWES AREA

St Margaret's, Hawes	Saturday	Dec 7	2.00pm	'Magic of Christmas' vocals, handbell and organ concert
	Sunday	Dec 8	10.30am	Holy Communion
	Sunday	Dec 15	10.30am	Family Nativity Service. Join the fun.
	Saturday	Dec 21	2.00pm	Family Film Afternoon
	Christmas Eve		7.00pm	Carols in the Market Square
	Sunday	Dec 29	9.30am	Benefice Holy Communion
	Sunday	Jan 12	10.30am	Holy Communion
	Sunday	Jan 19	10.30am	Family Service
	Sunday	Jan 26	10.30am	Holy Communion
St Mary & St John, Hardraw	Sunday	Dec 8	9.00am	Holy Communion
	Sunday	Dec 22	9.00am	Morning Prayer
	Christmas Eve		10.00pm	Holy Communion
	Christmas Day		10.00am	Benefice Christmas Communion
	Sunday	Jan 12	9.00am	Morning Prayer
	Sunday	Jan 19	9.00am	Holy Communion
	Sunday	Jan 26	9.00am	Morning Prayer

Evening Prayer by telephone is at 4.00pm every Sunday. See website [www.upperwensleydalechurch.org/services](http://www.upperwensleydalechurch.org/services).



## HAWES AREA (continued)

Gayle Methodist Chapel	Sunday	Dec 8	6.00pm	Evening Service with Rachel Martin
	Tuesday	Dec 10	12.00 noon	Taizé Service (including soup lunch)
	Sunday	Dec 15	6.00pm	Evening Service led by Rev Gillian and Scott Lunn
	Sunday	Dec 22	6.00pm	United Services Carols by Candlelight
	Sunday	Dec 29	10.30am	At Leyburn Methodist Church
	Sunday	Jan 5	6.00pm	Evening Service with Ruth Poultney
	Sunday	Jan 12	6.00pm	A locally arranged Service
	Sunday	Jan 19	6.00pm	Covenant Service led by Rev Jo Brown.
Hawes Junction Chapel	Sunday	Dec 15	2.30pm	Carols by Candlelight

## AYSGARTH, WEST BURTON AND WEST WITTON AREA

**Church Services:** In case of bad weather please check our website at [penhillbenefice.co.uk/services](http://penhillbenefice.co.uk/services) for updates. There will be a Telephone Service each **Sunday** at **9.30am**. Dial **0333 0110 946** and enter room number 61337190# and PIN 7450#. (Local charges apply).

St Andrew's, Aysgarth	Sunday	Dec 1	10.30am	Holy Communion. Penhill Together Service.
	Sunday	Dec 8	11.00am	Holy Communion
	Sunday	Dec 15	11.00am	Holy Communion
	Sunday	Dec 22	11.00am	Carol Service
	Christmas Day		11.00am	Christmas Praise
	Sunday	Jan 5	11.00am	Holy Communion
	Sunday	Jan 19	11.00am	Holy Communion
	Sunday	Jan 26	11.00am	Morning Prayer
St Bartholomew's, West Witton	Thursday	Dec 5	9.30am	Holy Communion
	Sunday	Dec 8	11.00am	Holy Communion
	Sunday	Dec 15	6.00pm	Carols and Readings
	Thursday	Dec 19	9.30am	Holy Communion
	Sunday	Dec 22	9.30am	Holy Communion
	Christmas Eve		4.00pm	Crib Service
			11.30pm	Midnight Communion
	Thursday	Jan 2	9.30am	Holy Communion
	Sunday	Jan 5	11.00am	Holy Communion
	Thursday	Jan 16	9.30am	Holy Communion
	Sunday	Jan 19	11.00am	Morning Prayer
	Sunday	Jan 26	9.30am	Holy Communion
	Thursday	Jan 30	9.30am	Holy Communion
West Burton Methodist Chapel	Sunday	Dec 8	10.45am	Holy Communion with Rev Julie Reid.
	Sunday	Dec 15	10.45am	Service with Rev Jo. Brown
	Sunday	Dec 22	2.30pm	Thanksgiving Service with Rev Jo. Brown.
This is the last service at the Chapel before closure				

## CARPERBY, REDMIRE, PRESTON, THORALBY AND WENSLEY AREA

St Margaret's, Preston-under-Scar	Sunday	Dec 8	9.30am	Holy Communion
	Sunday	Dec 15	9.30am	Holy Communion
	Sunday	Dec 22	6.00pm	Carol Service
	Sunday	Dec 29	10.30am	Holy Communion Benefice Service
	Sunday	Jan 5	9.30am	Holy Communion
	Sunday	Jan 19	9.30am	Holy Communion

St Mary's, Redmire	Sunday	Dec 8	9.30am	Morning Prayer
	Sunday	Dec 15	9.30am	Holy Communion
	Christmas Eve		3.30pm	Crib service
			8.00pm	Holy Communion
	Sunday	Jan 5	9.30am	Morning Prayer
	Sunday	Jan 12	10.30am	Holy Communion. Penhill Together Service
	Sunday	Jan 19	9.30am	Holy Communion
Thoralby Village Hall	Saturday	Dec 14	2.00pm	Carols
Redmire Village Hall	Wednesday	Dec 4	10.30am	Church Coffee Morning
	Wednesday	Dec 18	1.30pm	Christmas Tea Party
	Sunday	Dec 22	4.00pm	Carol Service
	Wednesday	Jan 1	10.30am	Church Coffee Morning
	Wednesday	Jan 15	2.00pm	Church Afternoon Tea
Holy Trinity, Wensley	Friday	Dec 13	6.30pm	Carol Service
	Christmas Day		9.45am	Christmas Communion
Thornton Rust Mission Room	Sunday	Dec 22	3.00pm	Carol Service
	Sunday	Jan 26	3.00pm	Evening Prayer
Cote Gill, West Witton, DL84LT	Thursday	Dec 12	10.30am	Christmas Coffee Morning in aid of the Children's Society. £5. There will also be a raffle. Everyone is welcome.

### William and Audrey Pratt

would like to wish family, friends and neighbours a Merry Christmas and a happy and healthy New Year. William would also like to thank all of you who have visited him at Sycamore Hall.



### Jim Lambert Would

like to wish family and friends a very Merry Christmas and a happy and healthy New Year.

A donation instead of cards to Cancer Research UK.



### Eric and Kathleen

**Bell** wish all family and friends a Merry Christmas and a Happy New Year.



### Davinia Hinde and

the team at Bainbridge Vets would like to take the opportunity to wish everyone a Merry Christmas and a Happy New year. Thank you for all your continued support and here's to an exciting 2025.



### Denise Mason

sends Season's greetings and best wishes for the New Year to family and friends



### Elizabeth Iveson

wishes family, friends and neighbours a Merry Christmas and a happy and healthy New Year

### Anne Moore (Carperby)

sends love and best wishes all relatives and friends for a happy Christmas and a good New Year and good health,



**Joan Haigh** wishes all her friends, and neighbours a Merry Christmas and a happy 2025



Merry Christmas and a happy and peaceful New Year to all family and friends from **Myra Staveley**



**Marilyn and Tony Philpott** who were lucky enough to live in beautiful Wensleydale for over 20 years send Christmas greetings to all their old friends and acquaintances



**Jean Sleightholm** sends very best wishes for a Happy Christmas and New Year to all family and friends.



Wishing everyone a happy Christmas and a healthy, rewarding New Year. **Mary and Kelvin Young.**



**Edwin and Madeline Pratt** would like to wish friends and family a Merry Christmas and a Happy New Year.



**Chubby, Sarah, Jas and George Brown**

would like to wish all our family and friends a very Merry Christmas and a happy New Year! We won't be sending cards, but will be donating to Cancer Research



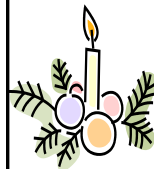
**Julia Harrison** of Flat 30, Sycamore Hall would like to wish her family and friends a merry Christmas and a happy New Year.



**Jim Spensey** would like to wish family and friends a Merry Christmas and a happy New Year.



**Judy Fawcett** says Merry Christmas and best wishes for 2025 to family and friends .



**Rob and Val Ward** send Christmas wishes and a Happy New Year to everyone.



**Georgina Devine**, from Sedbergh, would like to wish all her friends very Merry Christmas



**Carol and Jeanette** of Twisted , Town Foot, Hawes send best wishes for Christmas and the New Year to all their clients.



**Stuart and Brenda Harker** would like to wish family, friends and neighbours a very Merry Christmas and a happy, healthy New Year.

