

# **THE UPPER WENSLEYDALE NEWSLETTER**

**Issue 313**

**October 2024**

**Donation please:  
50p suggested**



Covering Upper Wensleydale from Wensley to Garsdale Head plus Walden  
and Bishopdale,  
Swaledale from Keld to Gunnerside plus Cowgill in Upper Dentdale.

## Guest Editorial

I wonder how many people still keep a daily diary? I imagine most young people don't because they rarely write by hand. A letter of thanks (if you get one at all) is usually an e-mail or a text message. I have to think hard to visualise the actual handwriting of my grandchildren. When I was young, the daily diary always struck me as a chore and I never succeeded in keeping one up for more than a week. This of course induced guilt especially as some of the diaries given to me as Christmas presents were rather beautiful books, leather bound with silk markers.

For the last twenty years or so I have been writing poetry and my poems are my diaries now. I don't write up accounts of daily events that don't interest me. What I focus on is what the novelist Virginia Woolf called 'moments of being', those events, personal, national or international, which have stirred me to think, and sometimes, to write.

Yesterday the report on the Grenfell Fire, seven years in preparation, was published. I did write a poem about that, about the way the volunteers couldn't cope with the mountains of donations

*'Money keeps pouring in, nappies and blankets,*

*No more donations please, we have no storage,*

*It will all rot when it rains....'*

and I thought back to that overwhelming response of the public, to the enormous tragedy that took 72 lives, their names read out one by one, at the end of the 1 o'clock news.

Then there is the weather. I am working on a poem called 'Big' which was sparked off by the unexpected death of a friend though I had actually been making notes about the extraordinary growth of flowers, plants and trees this year, after so many months of rain.

*'Death rolled up again last week.*

*big, like these bees, It has been a big summer*

*our hydrangeas are like pink cabbages.'*

It is hard to interest some people in poetry. "Not for me. I just don't get poetry". I encountered this puzzled indifference years ago as an English teacher. The job of Poet Laureate

is not an enviable one, the poet feeling obliged to write a poem for significant state occasions, although Simon Armitage, the present laureate, has written some good 'state' poems, I think. School children used to be made to learn by heart Tennyson's 'The Charge of the Light Brigade', a poem often mocked at but I give it a gold star for its great energy and rhythmic power. I even like 'Someone had blundered' (to rhyme with 'thundered'). At least, you remember it. His successor, Alfred Austin, was not at his best when he felt obliged to comment on the illness of Bertie, Prince of Wales, the son of Queen Victoria ;

*'Across the wires the electric message came  
He is not better, he is much the same..'*

OUCH!

Some years ago the Swaledale Festival staged a short opera for schoolchildren which was performed in Grinton Church and I was invited to write the libretto. I called it 'Semerwater' using the story of the poem by William Watson in which a beggar curses a tight-fisted king and queen who have sent him away empty-handed, condemning them to a muddy death at the bottom of the lake. My son, a jazz musician, gave me sound advice about the lyrics I had to write. "Keep them simple" he said "Make them memorable, avoid abstractions." Incidentally, a contemporary of mine, who was born and brought up in Wensleydale, told me once that learning parts of 'Semerwater' off by heart was something she remembered having to do at school.

In her wonderful book 'The Man who Pays the Rent' (she is referring to Shakespeare) actress Judi Dench echoes what I sometimes say myself, that "our language is being traduced, so many acronyms, so many emojis, so many sentences that start with 'Like'...and what on earth does YOLO mean?"

*'Yesterday, all my troubles were so far away*

*Now it looks as if they're here to stay*

*Oh, I remember yesterday.*

*Suddenly, I'm not half the man I used to be*

*There's a shadow hanging over me*

*Oh, yesterday came suddenly..'*

Simple, short, to the point. I wish I had written those lines.

When people die their funeral service often

contains poetry. Very often it is a well-loved lyric from a song, sometimes it's a well-known poem. The words are not always very good but this doesn't matter. Samuel Johnson praised Gray's 'Elegy in a Country Churchyard' (a poem frequently set for examinations back in the 1960's) because it was, in his rather pompous phraseology, full of sentiments 'to which every bosom may return an echo'. More simply put, 'This poem speaks to ME, whoever wrote it, knew how I am FEELING.'

Last week I found a pretty stone-built seat overlooking the Lune estuary in rural Lancashire. Someone had put it there in memory of a person much loved. These words were inscribed on it :

*'Dust if you must, but the world's out there  
With the sun in your eyes  
And the wind in your hair,  
A flutter of snow, a shower of rain,  
This day will not come round again.'*

I write this on a very beautiful September day, clear crisp skies, sun, and last night a huge moon. 'This day will not come round again.' We can all echo that, whatever we believe. Let us enjoy it.

**Ann Pilling, September 2024**

## Advance Notice of Event at Hardraw Church

The Ayrton Family are coming on **Saturday, November 23rd** to sing and play in Hardraw Church. More details will be provided in the November edition of the Newsletter.

### Submission of articles

Please note that all submissions should comply with current copyright legislation. If submitted articles are not the original work of the person submitting them, then all relevant permission should be sought and granted for reproduction.

**DEADLINE FOR COPY FOR THE  
NEXT ISSUE IS**

**TUESDAY OCTOBER 22nd  
PUBLISHED ON OCTOBER 31st**



## Eunice the Ewe

Last month I was hiding in the Upper Dales Home Care advert on page 19 and the lucky winner of the £10 prize is Ellie Foster of Redmire.

Where am I this month? To enter for the £10 prize, please include your postal address if replying by email.

## Hawes Christmas Lights Help Needed

We are looking forward to 'Switch On' day on **Saturday, December 7th.**

We will be putting up the displays on **Wednesday, November 13th.** If anyone can help us, even for a couple of hours, it would be much appreciated. Many hands make light work! We're meeting at about 8.30am outside Feather and Fern, Town Foot. Please come prepared for cold/wet weather.

## Hawes Christmas Lights Festival

**The accuracy, appropriateness or legitimacy of any product or service advertised in this publication is the sole responsibility of the advertiser and not of the Upper Wensleydale Newsletter.**

### In This Issue

### Page

Guest Editorial	2
Competition	4
Notes from Thorney Mire	8
YDNP Housebuilding Plans	10
Music from the Movies concert	11
Bainbridge Chapel redevelopment	12
Stop Ure Pollution	14
Wensleydale Orchestra	16
What's On	20
DCM News	21
West Witton Shop	23
LACC—Help needed	29
Penhill Benefice Services	30
Askrigg Snooker	31
Upper Wensleydale Benefice Services	34
Upper Dales Health Watch	36

## October Competition

These are places in the Newsletter area but with alternate letters missing.

Examples:

UTRET      bUrTeRsEtT  
WRO BTOS   WoRtOn BoTtOmS

1. AD N
2. TWIE RDE
3. ER AK
4. APE GEN
5. BLO HL
6. HOTE ET
7. LVL SA
8. EMRY OR
9. EBGI
10. AGA
11. BOSD CMO
12. LW HRSY

## September Competition Answers

The Olympic cities were:-

1. ATHENS
2. LOS ANGELES
3. BARCELONA
4. ANTWERP
5. LILLEHAMMER
6. MONTREAL
7. LONDON
8. MELBOURNE
9. MEXICO CITY
10. VANCOUVER
11. RIO DE JANEIRO
12. HELSINKI
13. STOCKHOLM
14. SALT LAKE CITY
15. PYEONGCHANG

Lots of correct entries received for this one and the winner drawn from the hat was Susan Hugill of Gayle whose nominated charity to receive the £50 prize is Yorkshire Air Ambulance.



**Wednesday 23 October 2024**

**Hawes Market Hall**

Entry from 7.00 pm, for

Eyes down at 7.30pm

**Entry £6**

Tea, coffee, with a biscuit available during the break

**Profits to**

**Upper Dales Bonfire & Fireworks**

## SANDERSON & CO. FUNERAL DIRECTORS

A complete and caring funeral service provided by an independent family business established in 1879.



For personal and dignified attention in time of need please contact

**Richard Sanderson**

Leyburn Business Park DL8 5QA

**Tel: 01969 623143 (24hrs)**

**Mobile: 07710 652348**

**Email: sandersonandcoleyburn@gmail.com**

We offer Golden Charter Pre-payment Funeral Plans Please ask for further (written) details.

## Drop-off points and contacts

For news, articles, reports, letters, What's On dates, competition entries, suggestions and comments:- All 01969 numbers.

<b>Hawes:</b>	Community Office	667400
<b>Bainbridge:</b>	Sylvia Crookes, 3, Bainside	650525
<b>Askrigg:</b>	Sykes Shop,	650535
<b>Carperby:</b>	Anthony Abraham Hall Garth	663243
<b>West Burton:</b>	Nadine Bell, Margarets Cottage	663559
<b>Aysgarth:</b>	Hamilton's Tearoom	663423
<b>Redmire:</b>	Kevin Davis Westholme	624165
<b>Thoralby:</b>	Neil Piper	663747
<b>West Witton</b>	Christine Barker, Chestnut Garth	624934

## Hawes School News

Our first few weeks in school have been successful with new learning well under way across all the school. It has been fantastic to see so many happy faces on all the pupils – and staff - as they returned to school.

A special welcome to our five new Nursery pupils, who appeared to be taking their first day as part of our school family very much in their strides! We look forward to seeing where our learning will take all of us over the next weeks and to sharing this with you here, via our Facebook page, our website and upcoming parent information events.

All our KS2 children have started their swimming lessons at Catterick, with our Year 3 children enjoying their new experiences. The children travel every Wednesday afternoon to the pool and this lasts for ten weeks of the Autumn Term.

We held our annual ‘Meet the Teacher’ events across school where parents/carers had the opportunity to visit school and meet the staff. It was wonderful to see so many parents in school, finding out about class routines and new learning. We look forward to further events happening this term and our mental well - being walks will be happening before half term.

Mrs. Metcalfe continues to work as our mental well-being lead in school. This half term she will be leading the children across school with our mental health walks around Hawes. This is planned to coincide with International Mental Health Day on 10th October. We will also be holding events after school on that day for parents/carers to join us in the school library.

Hawes PTFA - ASDA “Cashpot for Schools”

If you shop at ASDA please help us raise money for our school, all you have to do is, opt

in through the Asda Rewards app, choose our primary school and shop and scan in store or shop online at Asda.com, between September 2nd and **November 30th**.

Asda will donate 0.5% of the value of your shop to our PTFA. Also, every time somebody opts in, Asda will give an additional £1 to the school Cashpot. Plus, it doesn’t stop there – Asda are also giving £50 to every school to get them started. So, please spread the word by telling friends and grandparents as they can help raise funds too. Thank you.

### Used Ink Cartridges

We are still collecting used/unused ink cartridges to recycle and raise funds for school. Please encourage family, friends and members of the community to save them for us. Thank you. Please drop them into school if you have any.

## Annual Churchill Fellowships Applications Welcome!

The application process has opened for 2025 Churchill Fellowships. Each year's successful applicants (134 people in 2024) receive funding for between four and eight weeks of intensive research, including travel abroad anywhere in the world, relevant to the subject and objectives of each application.

A Churchill Fellowship provides a once-in-a-lifetime opportunity to travel, meet (in person or online) and learn from leading innovators in the field, in order to return and share that learning and its benefits in the UK and/or your own community. Fellowship themes cover every area of society (including rural life, climate change and Tech For All) and reflect the modern life of the nation. You - or someone you know - friend, neighbour, family member or colleague - may be interested in applying for a Fellowship? Eligibility criteria, the application timeline and more is explained within the Application Pack on the website [www.churchillfellowship.org](http://www.churchillfellowship.org).

Applications open once a year and any adult UK citizen may apply (there is no upper age limit) The forthcoming deadline for applications is **12 noon on Wednesday, November 12th**. It is important to have regard to the FAQs and other information provided for guidance on the website. Note: Late applications will not be considered.

Ruth Annison CF1994

**D MOORE & M BLACKHURST**



**BUILDERS** **GENERAL MAINTENANCE**

*All types of building work undertaken  
25 years' experience ~ Free Estimates*

**07772 284602 ~ 07975 897715**

3 Woodburn, Hawes. 01969 667505

## Space Invaders

No, not that maddeningly addictive pub video game which interfered with many a good night out back in the 70's, a bit more serious than that. Who's enjoying the ragwort (scientific name: *senecio*) invasion? This tall, dazzlingly yellow undesirable is flourishing not only in the dales, but farther afield - the M6 central reservation over in Cumbria is a particularly fine breeding ground, although I resisted stopping for a closer inspection.

Nearer to home, HQ appears to be around Redmire quarry. Park up at the top of Scarth Nick, peek over either side of the road and witness massed ranks of the stuff busily contemplating world domination. Poisonous indeed, although I was told that it's only when it's dead or dying after cutting or pulling up that it becomes toxic. Any experts out there care to expand? Apparently, each plant can produce over 50,000 seeds and although supposedly only a biennial, if it's nibbled at the base, it will send out fresh shoots and could go on for years. That urge to survive is, I find, admirable but a bit spookily relentless.

Biddable and less threatening *senecio* species are available for the garden: *cineraria* 'silver dust', often sold as a border annual or hanging basket filler, will usually survive into another year and quite happily flower away, the bright yellow a perfect contrast with that silvery, almost white foliage. At one foot tall it's a bairn; more of a statement would be 'viravira', again, pale yellow/silver, two foot tall. Both seem to enjoy full sun and shelter from cold winds as well as well drained, gritty soil. No need to spoil them with mulches or liquid feed.

There are a couple of shrubby types I've used, both responding well to quite severe pruning every third or fourth year. That's at the expense

of flowers, but if you don't boss them, the lowest lateral branches root on contact with the soil and you end up with a thicket and thickets are generally bad news. 'Laxifolius' tops **four feet**, whilst 'compactus' (if only) will make **three feet**. This one's a bit of a softie and doesn't generally dip its toe in anywhere north of Watford, so if you want a safer bet and are set on that yellow/silver combination and size, opt for santolina, the cotton lavender.

Hand in hand with the ragwort this year have been huge drifts of the far classier meadowsweet. More benign by a mile, the elegant, creamy white flowering *filipendula* has spent all summer tastefully decorating damp roadsides, boggy meadows, even framing to perfection those otherwise ominous 'cats eyes removed' signs (yes, I had to look twice) on the A684.

I've found it too rampant to use in the garden and have opted for either the towering 'venusta' with its pink plumes, or the smaller and darker hued 'purpurea'. Most gardens have a shady area, that problem patch where the soil's like glue - well that's perfect for both of the above, just think on and cut to ground level and mulch in Autumn.

Together with a profusion of bright blue meadow cranesbill and the stately rosebay willowherb, it's been a bumper year for the wildflowers, so all good news? Whoa, let's not forget that ragwort. Down below Wensley we saw teams of heroes weeding out the aforementioned scourge. It looked a thankless task; the beast's sheer profusion and range has been staggering and many hillsides are under siege. Is there a solution or is it a case of learning to love it and live with it? Hmm, fence sitting's never looked so attractive.

Ed Gardener

### ANDREW **HAWKINS** BUILDING CONSTRUCTION CONTRACTORS

NEW BUILDS | EXTENSIONS  
BARN CONVERSIONS | ROOFING & GROUNDWORKS  
APPROVED DAMP PROOFING & REMEDIAL  
TREATMENT SPECIALISTS

**Tel: 0800 002 9779**

Email: [hawkinsbuilder@hotmail.com](mailto:hawkinsbuilder@hotmail.com)

Unit 5 Harmby Business Park, Harmby Road, Leyburn, North Yorkshire, DL8 5QA



### *Hamilton's Tea Room* *At Yoredale House,* *Aysgarth*

*Licensed Tea Room*

*HOMEMADE FOOD,*

*Light Lunches, Clotted Cream Teas*

*Open Feb-Nov, 10.30am - 4.30pm*

*Closed Mondays and Tuesdays*

*Tel: 01969 663423*

*[info@yoredalehouse.co.uk](mailto:info@yoredalehouse.co.uk)*

## Hawes Mobile Recycling Collection

There will be a mobile household waste recycling collection at the Upper Wensleydale Business Park in Hawes on **Saturday, October 19th from 9.00am to 1.00pm.**

The following household waste is accepted at all mobile centres:

Furniture (including beds, mattresses, sofas and chairs), bric-a-brac.

Paper, cardboard, telephone directories, books.

Glass, food and drink cans, foil, scrap metal.

Mixed textiles and clothes.

Fluorescent tubes, TVs and monitors, fridges

and freezers, large appliances, small appliances.

Wood.

## The Moorcock

### Garsdale Head

Our licensed Tea Room is open daily (according to season) from 11.00am to 5.00pm.

We serve light meals, snacks, tea and coffee and a range of beers and spirits.

Bed and Breakfast facilities are also available.

**Tel 07960 930047**

[www.the-moorcock.co.uk](http://www.the-moorcock.co.uk)

[Email. Themoorcock@outlook.com](mailto:Email.Themoorcock@outlook.com)

**O'REILLY**

**Chartered Accountants**

At O'Reilly's we provide a broad range of accountancy and taxation services to our clients.

Our friendly and approachable team are dedicated to delivering a high standard of service throughout the year.

We act for many individuals and businesses with different levels of complexities.

For more information visit our website at [www.o-reilly.co.uk](http://www.o-reilly.co.uk) or contact us on **01969 667428** to arrange a free initial consultation.

## Thornton Rust Village Institute Centenary Celebrations

As some of you may know, Thornton Rust Institute will be 100 years old in October. To mark this occasion we have planned several displays which may be of interest. A number of old photographs and an old newspaper will be on display in the hall as well as the traditional cures and remedies of the day.

We also intend to serve refreshments from old recipes from 1924! Opening times are **Wednesday, October 30th, afternoon; Saturday, November 2nd morning; Monday, November 4th morning and Friday, November 8th, afternoon.**

During the years since 1924 a lot has changed in the village. At one time we had two public houses and a shop. Unfortunately these have all disappeared. Now our only meeting place is the village hall. We have a committee of village people who by their efforts and hard work ensure we still have a village hall. During Covid, like other places, we suffered with no bookings and at one time we thought the hall might have to be closed. Thanks to various grants we not only kept it open but improved the hall with new curtains, repainting and new chairs and tables.

Going back to 1924, the Institute was opened as a reading room where men could come and read a variety of papers. There were strict rules - no smoking, no swearing, no spitting, and probably no women were allowed! If requested the paper could only be read until someone else wanted to read it.

In 2024 we have a thriving social calendar, including Pickle Ball, Badminton, Whist and Circle Dancing and numerous coffee mornings. Although 100 years have passed, the village still has a good sense of community although the rules are not so severe, we still don't allow spitting, swearing or smoking although women are not only allowed but welcomed.

**Sue Duffield**

## W.S.HARTLE

### FAMILY BUTCHER, WEST BURTON

Best Quality Meat, West Burton Lamb,

Homemade Sausages and Burgers,

Free Local Delivery and Freezer Orders

Tel: David on **01969 663302** or visit

[www.hartlebutchers.co.uk](http://www.hartlebutchers.co.uk)



## Notes from Thorney Mire

### Autumn

There is a quotation attributed to John McPhee, "If you have to ask that question you wouldn't understand the answer". I sometimes feel like using this quotation when people ask me why I like living "in the back of beyond". One morning after watching a red squirrel with a distinctive dark tail scamper across the roof of the barn, I took a basket of washing outside to hang on the line, (because I believe in solar and wind power rather than electricity). I saw, in the middle distance a buzzard flying quietly under a clear blue sky. It wasn't mewing as this is what normally attracts you to them, but was circling silently, no doubt looking for its breakfast. There was a hare below the clothes line. It was startled when it saw me and ran off into the field.

If it had not been for the swallows twittering as they flew above my head, there would have been absolute silence. No traffic noise, no passenger jets flying north, not even the rustle of a leaf. It was a beautiful, still, sunny day. I took a deep breath and as I exhaled slowly, I thought, "Peace". If people can understand that, then they will not ask me the question.

Speaking of swallows, only four arrived in the Spring and only four left in late Summer. Whether it was the same four, or a pair with two young I have no way of knowing. One pair began to build a nest beneath the eaves of the house but abandoned it. Four is a far cry from the twenty to thirty we used to see a few years ago.

I have seen a hare several times in our local area and in July on the lower slopes of Widdale Fell there were two hares boxing. They usually do this in March when the female is fighting off the advances of the male, but this behaviour can carry on for several months.

There are three types of hares in Britain. The Mountain and Irish hares are native to Britain. The brown hare is thought to have been introduced in Roman times, along with rabbits when the Romans thought there might not be enough to eat in that northern most outpost of the Roman Empire. The hare is the fastest land mammal in Britain and can reach speeds of up [40 mph](#) over short distances. Its numbers have decreased over the last century by 80% and they are now protected by The Wildlife and

Countryside Act. Unlike rabbits, hares do not live in burrows but give birth to their young in a shallow depression or flattened grass. This doesn't give the leverets much protection so they are born with fur and their eyes wide open. Young rabbits (kittens) are born with no fur and blind and stay in the burrow for about three weeks.

Grey squirrels are still being found in the wood, but the good news is, a pregnant red squirrel has been seen in the woodland adjoining ours. Driving down the dale recently, on the way to Carperby a red squirrel ran across the road in front of the car near Nappa. It was definitely a red one as it stopped on the opposite verge and I could see its tufty ears. It's good to think they are spreading down the dale.

I have only seen two wasps this year. Although it is nice to be able to sit outside and not be pestered by them, they are pollinators. According to the Natural History Museum, without wasps the world would be overrun by insects and spiders. I don't think arachnophobes would be happy with that.

Wet weather is attributed for the lack of these insects and also explains why butterfly numbers are at their lowest since Butterfly Conservation started their butterfly count fourteen years ago. Butterflies need warmth and dry conditions to be able to mate.

I have only seen one red admiral this year in the garden. I was hoping that when the sedum came into full flower they would arrive, but they didn't and I didn't see any on the buddleia. Last year we had over a dozen red admirals in the garden at the same time, so many it was difficult to count them.

A small butterfly which I had not seen before landed on the lobelia in the window box. I hadn't got a camera to hand so I studied it closely so that I could identify it later. I thought it would be easy to find as its markings were simple. Black wings with a narrow red stripe on the edge of the wings and tiny red spots inside the red stripe. In spite of looking through several books on butterflies and moths and searching the internet I cannot find anything that resembles this insect. I shall continue searching as it's frustrating not to know what it was, so if anyone has any ideas, answers on a postcard please.

**Sylvia Turner**



## Winter Vaccinations

Most eligible adults will be able to get the flu and COVID-19 vaccinations from **October 3rd**. This may be later than you've had the vaccine before, but it means you'll have the best protection when flu is most widespread, as the vaccine stops working over time, and getting it too early can mean it stops working when you need it most.

The flu vaccine is recommended for people at higher risk of getting seriously ill from flu. It's offered on the NHS every year in Autumn or early Winter. You can get the free NHS flu vaccine if you:

- are aged 65 or over
- have certain long-term health conditions
- are pregnant
- live in a care home
- are the main carer for an older or disabled person, or receive a carer's allowance
- live with someone who has a weakened immune system.

The groups to be offered a COVID-19 vaccine in autumn/winter 2024/25 are:

- residents in a care home for older adults
- all adults aged 65 years and over
- persons aged six months to 64 years in a clinical risk group.

Information on long term health conditions and clinical risk groups can be found on the NHS website.

Vaccinations are available from your GP surgery and from Community Pharmacies, including Central Dales Pharmacy in Hawes. To book a vaccination for either flu or COVID-19 visit [nhs.uk/wintervaccinations](https://nhs.uk/wintervaccinations) or call Central Dales Pharmacy on **01969 67213** (or pop in to the shop) or speak to your GP practice.

**Craig Bingham MRPharmS**  
**Central Dales Pharmacy**

**Sykes House in Askrigg**  
**Grocery Shop and B&B**  
Shop Open 7 days a week

Enquire for  
B&B bookings at  
[www.sykeshouse.co.uk](http://www.sykeshouse.co.uk)  
**01969 650535**

## STURDY TRAVEL

INDEPENDENT TRAVEL SPECIALISTS

Now at Toll House (Next to Spar)  
Market Place, Hawes DL8 5QX

Also at 1, Golden Yard, Market Place,  
Leyburn, DL8 5AS

For all your travel needs, home and  
abroad

**Call: 01677 422826**

Email: [robert@bakewelltravel.co.uk](mailto:robert@bakewelltravel.co.uk)

Part of Bakewell Travel

ABTA No. P8596

## Firewood

**Seasoned hardwood logs**

**Tel: 01969 662692**

**Mob: 07970 629227**

## Solid Joinery Solutions

All aspects of joinery and carpentry undertaken.  
Bespoke joinery solutions made to your  
requirements.

Covering all Yorkshire Dales and surrounding  
areas

Contact Paul for a free, no obligation quote  
on **07980 167987**

Email: [enquiries@solidjoinerysolutions.co.uk](mailto:enquiries@solidjoinerysolutions.co.uk)

Web: [www.solidjoinerysolutions.co.uk](http://www.solidjoinerysolutions.co.uk)

## EFFICIENT HEAT

**OIL BOILERS SERVICED  
AND REPAIRED**

Contact Nick  
**07729 105466 / 01969 667847**

## YDNPA - Housebuilding Plans

The Yorkshire Dales National Park Authority is preparing a new Local Plan that will guide decisions about new development during the period 2025 – 2040. We have reached the stage where we are able to consult on a list of preferred sites for future house building (Consultation No.7).

These sites will help the Authority to achieve the target of delivering 50 new homes every year (750 houses by 2040). These are needed to help address the social and economic challenges facing the National Park.

This consultation builds upon Consultation No. 6 last year which sought views upon a range of initial options for land for housing development. These options have been refined by the Authority's Local Plan Advisory Group (LPAG) having considered the comments received and undertaken further investigation of their constraints and opportunities. The LPAG has shortlisted 23 sites which it is recommending the National Park Authority allocate for new housing in the Local Plan. The sites within the Newsletter circulation area (with indicative dwelling capacity) are:-

CPY1 Land at East End Farm, Carperby 6 dwellings

HAW1 Land south and west of Woodburn, Burtsett Road, Hawes 6 dwellings

HAW2 Land south of Northgate House, Burtsett Road, Hawes 16 dwellings

HAW3 Land east of Northgate House, Burtsett Road, Hawes 6 dwellings

HAW4 Land at Kirkbrides Way, Hawes 10 dwellings

We want to hear the views of Parish Councils, local residents, local businesses, house builders, housing authorities, landowners and other interested parties before any final decisions are made. You can view the consultation documents and maps at <https://www.yorkshiredales.org.uk/park-authority/living-and-working/planning-policy/local-plan-2023-40/consultation-no-7-preferred-sites-for-housing-development/> or by visiting the National Park offices in Bainbridge or Grassington and inspecting the documents available in the reception area.

Consultees are being asked to comment on the suitability or otherwise of the 'preferred sites' and the contribution they will make to the Local

Plan objectives and housing target.

You are invited to submit your comments by e-mail: [localplan@yorkshiredales.org.uk](mailto:localplan@yorkshiredales.org.uk) or writing to: FREEPOST Yorkshire Dales (no need for a name or postcode). Please provide an email address and state your name and contact details. Please explain what aspect of the consultation your comments relate to and how any concerns you have could be resolved. The closing date for comments is **Tuesday, October 29th.**

The comments received will be considered at a meeting of the Full Authority in the Autumn. At that meeting Members will make a decision on which sites will go forward into the Publication version of the Local Plan.

### McGARRY & Co. Solicitors

**From small personal matters to larger commercial transactions, for personal advice in an impersonal world.**

Market Place, Hawes,  
North Yorkshire DL8 3QS  
Telephone No 01969 666290  
or email  
[office@mbmcgarry.co.uk](mailto:office@mbmcgarry.co.uk)

**Farm and Home visits by appointment**

Regulated by The Solicitors Regulation Authority  
No. 553987



**Upper Wensleydale  
Property Services**  
All aspects of domestic plumbing and heating work undertaken  
Bathroom supply and fitting, wet room installation and tiling  
Heating systems, and oil boilers and tank installations

**Please contact Malcolm Grant on 07855 191466**  
email: [mgwensleydale@gmail.com](mailto:mgwensleydale@gmail.com)

## Dales Charity Bingo Report

September was our busiest month this year with two nights of bingo played, firstly on September 4th for Dalesplay and next on September 11th for Hawes Youth Club. We had a good turnout on both nights with support evenly spread over both the events. Again, we welcomed players joining us from Hawes and surrounding areas, as well as people on holiday including guests from the Caravan Club, Youth Hostel and nearby holiday cottages.

It was great to welcome some new young faces from the Youth Club who came out to support their bingo evening on the 11th. The most spectacular call of the night goes to Harry Fothergill, whose strong enthusiastic call added a fun competitive vibe to the night.

Stephen Reynolds was our caller on the September 4th and again did a great job, helping raise £252.55 for Dalesplay. Mark Murphy was our caller on September 11th. It was Mark's first time calling and he injected a lot of personality into the night, which helped raise £256.96 for Hawes Youth Club. Thank you to everyone who came out and supported the September bingo nights. The wonderful amount of funds raised was only possible thanks to your support.

We are now running a bingo night in October in support of the Upper Dales Bonfire and Firework Display. This will be on **Wednesday, October 23rd** in Hawes Market Hall (please see advert on page 4). Everyone is invited to come along and join in the fun. If your group would like to receive the profits from a future Bingo night, please email us at [dalescharitybingo@gmail.com](mailto:dalescharitybingo@gmail.com) or call **Jan, 07736 017459**.



Mike Addison FRCO C.  
**OPTICIAN**

### Mike Addison Optician

Market Street, Kirkby Stephen,

**017683 71555**

Email : [infoks@mikeaddisonoptician.com](mailto:infoks@mikeaddisonoptician.com)

- Providing eye care for all the family
- Private & NHS patients welcome
- Children & over 60's receive free eye examinations
- Supplier of all spectacle & vision related products

or The Shire Hall, Appleby, 017683 53199

## Music From The Movies 2

**Saturday, October 26th - 2.30pm** at St.

Margaret's Church, Hawes

Free entry (Donations to organ restoration fund)

In a follow-up to last year's successful event, Mal Carruthers returns with 'Music from the Movies 2' to bring you a further selection of movie related themes interpreted on the wonderful organ at St. Margaret's Church here in Hawes. This year, Mal will also be joined by Amy Cockett and Dave Clark who will lend their vocal talents to the proceedings. Those who have attended Mal's events before will be familiar with his trademark style of audio/visual presentation which once again will be provided by Mike Hirst.

Over the past few years Mal has given a number of concerts which have all been with the aim of raising much needed funds for the future restoration of the organ. This is now over a hundred years old and he is very much of the opinion that it is an instrument worthy of preservation. As with many mechanical items, regular maintenance and repairs are required to keep things running smoothly. However it gets to a stage where more serious interventions are required and we are very much at that stage now with the organ at St. Margaret's. As soon as the necessary funds can be raised, this instrument requires a generational overhaul and restoration, to keep it in working order for all to enjoy.

Through recent fundraising efforts, a reasonable 'fighting fund' exists which we really hope to increase with events such as this. In the past Mal's events here at St. Margaret's have had exceptional attendances and we hope that this will be no different and that you will enjoy the organ and vocal performances given. There is no entry fee, but we hope that you will be generous with any retiring donations to the organ fund, all of which will be ring-fenced for the restoration of this wonderful instrument.

A wide range of film genres will be covered, so we hope that there is something here for everybody to enjoy. Come along, sit back and immerse yourself in this Matinee performance which will also include information and anecdotes about the composers and the films. There will be a short interval during which cinema style refreshments will be served.

So, what's not to like? Come on down, it'll be great to see you.

## Bainbridge Chapel Reopens its Doors Marking a First for the Dales Charity

A local charity based in the remote Upper Dales and run entirely by volunteers has succeeded in creating two stunning and affordable two-bedroom flats in the near derelict former Methodist Chapel in Bainbridge. Years of hard work, of building essential partnerships, sourcing funding and learning fast have culminated in the Upper Dales Community Land Trust (UDCLT) being able to provide two homes for local people who might otherwise have had to move away from their community due to the lack of affordable housing.

The Trust could not have done this without securing the partnership support of North Star Housing Group, a NE-based housing association, who have undertaken the complex conversion task and who will also handle the ongoing management of the properties and their tenants.

This has been the first completed affordable housing project for the small group of dedicated UDCLT volunteers led by Chair Stephen Stubbs. Back in 2017 Stephen set up the community land trust when it became clear that there was very little affordable housing stock for young families in the remote upper dales. They strongly believed that the provision of affordable homes was key to keeping communities in the deeply rural areas of the Yorkshire Dales alive.

They succeeded in getting significant funding in place from the (then) Richmondshire Council, which allowed them to purchase the empty Chapel in 2022 but the actual building work didn't start until January 2024. In the following nine months the huge internal space transformed from derelict building into two spacious and characterful two-bedroom affordable homes. As far as possible the former role of the building has been retained - for example some of the original Chapel pews have been repurposed as hallway seating in the two flats. Externally the landmark retains its original impressive appearance whilst sporting new windows and doors and smart new repointing of its stonework.

Local builders Randall Orchard have carried out the building works on the Chapel. Graeme Newton, Managing Director, says: "We were delighted to have been involved in the delivery

of two affordable units in the heart of Wensleydale. The conversion of the old chapel had its challenges, but all the parties worked really well together to complete the works and leave a nicely completed project for local people. We sincerely hope that further developments in the National Park come forward and that we can play our part in delivering more affordable housing in the future."

An already important and historical institution in the remote village of Bainbridge, the regenerated Chapel can now once again have a valuable role in the local community, providing affordable homes for its people.

UDCLT Chair Stephen Stubbs is understandably delighted: "It is brilliant news that our newly created affordable homes have now been allocated to local people from the Bainbridge community in Upper Wensleydale. This completed project proves we can make a difference to the affordable housing picture in this region and we want to continue to build on this success. We've got some exciting projects in the pipeline."

Find out more about our background and information on current projects at [www.udclt.co.uk](http://www.udclt.co.uk).

### Dales Garage

Services we provide

Exhaust, Diagnostics, Brakes, Welding, MOT, Suspension, Timing Belts, Clutches, Batteries, Tyres, Services. All makes and models.

Unit 2, Hawes Ind Estate, Brunt Acres Road  
Hawes DL8 3UZ



[www.facebook.com/dalesgarage1](http://www.facebook.com/dalesgarage1)

Call – James 07399 513605

Tyler 07376 487776



**LIBERTY**  
FABRIC

Quality fabrics for quilting,  
dressmaking, etc., sewing  
accessories, a little wool/yarn.

**Abbotstone House Collection,**

**Now at Unit 5 Raynes Ct,**

**Hawes, DL8 3UW**

**☎ 07921 058803**

## Yorebridge Education Foundation Financial Assistance for Students 2024/2025

Grants are being offered to students under the age of 25, who live in Upper Wensleydale, and are moving into, or are already within, higher education for the academic year 2024/25.

The grants are awarded to provide financial assistance in meeting educational costs, including transport costs.

The Trustees of Yorebridge Education Foundation are now inviting grant applications; applicants should provide details of their age,

the educational establishment that they are to attend, their chosen course, how they would use the grant if awarded one, plus any additional information that they consider relevant.

Students are welcome to apply this year even if they have been awarded a grant in previous years.

All applications must be received by **December 31st 2024** and should be sent electronically to The Clerk: [clerkgef@outlook.com](mailto:clerkgef@outlook.com) or by post to:

The Trustees Yorebridge Education Foundation c/o The Haven, Askrigg, Leyburn, North Yorkshire DL8 3HN.



### HAIR, NAILS AND AESTHETICS

All ladies and gents  
services  
Manicures and Pedicures  
I Nails Express  
Thread Vein Removal  
Skin Tag Removal

Tel Hawes 01969 667449  
[info@twistedah.com](mailto:info@twistedah.com)

## Applegarth Couture [www.applegarthcouture.co.uk](http://www.applegarthcouture.co.uk)

Made to measure  
Wedding, evening and daywear,  
tailoring and alterations.

**Contact: Rebecca Atkinson,  
Aysgarth  
01969 629398 or 07521 030870**

Your local family owned Coach Operator



### COACH HOLIDAYS and FULL DAY EXCURSION PROGRAMME

Call 015242 41330 for our current brochures or visit  
our website to view up and coming Holidays  
and Day Trips

Email: [enquiries@bibbys.co.uk](mailto:enquiries@bibbys.co.uk)  
Website: [www.bibbys.co.uk](http://www.bibbys.co.uk)

## DALE HEAD GARAGE

Town Head, Hawes

**Tel.01969 667483**

Fuel Available 24/7

## D BUSHBY Joiner/Cabinet Maker

Doors, windows, staircases etc.  
made to measure.

Skirtings, doors, shelves fitted and  
many more odd jobs.

For a prompt and efficient service ring

**David Bushby: 01969 666048 or  
07980 201579**

## WANTED - SCRAP CARS AND COMMERCIALS

FREE collection from all areas.

[www.scrapcarmcumbria.co.uk](http://www.scrapcarmcumbria.co.uk).

**07825 293099**



## Middleham and the Dales Local History Group

**Wednesday, October 16th, 2.00pm** at  
Harmby Village Hall

### The Isobel Jenkins Lecture

#### The Lure of Antiquity: North Yorkshire and the Grand Tour by Gail Falkingham

In this illustrated talk Gail Falkingham will introduce you to some of the travellers from North Yorkshire families who travelled to Italy in the 18th and 19th centuries. Based on a wonderful selection of travel journals and diaries in the archives of several North Yorkshire families held at the County Record Office (NYCRO) we will find where they went, how they travelled, and what they thought of it all.

Prior to working at NYCRO in Northallerton, where she has been a Record Assistant for the past 6 years, Gail had a career in field archaeology and was latterly County Archaeologist for North Yorkshire. N.B. This talk was originally scheduled for the September meeting.

Members, new members and visitors are always welcome. Annual membership is £12 for nine meetings and visitors can attend for £3 per meeting. For more information contact **Tony Keates 01969 640436**, [dotandtonyk@btinternet.com](mailto:dotandtonyk@btinternet.com).

### Tuesday Hawes Fish Market

Also door to door delivery every **Friday**. Pre-order or just turn up on a **Friday** at

Askrigg Stone Cross. **9.30am to 10.45am**

Bainbridge playground. **11.00am to 11.30am**

West Burton **12noon to 12.30pm**

Thornton Rust W.I. Hall **12.45pm to 1.00pm**

Mobile **07711 989590**

Facebook Hawesfishmarket;

## FOR ALL YOUR SEWING NEEDS

Contact. Sheila Kearton at  
Woodhall, Askrigg

Alterations and custom soft furnishings  
**CURTAINS, ROMAN  
BLINDS, CUSHIONS  
DRESSMAKING AND  
REPAIRS**



Tel **01969 663484** or **07800 576925**

## Stop Ure Pollution

The results of the initial sampling of the River Ure by Stop Ure Pollution (SUP) volunteer citizen scientists were presented at an open meeting at Leyburn Methodist Church Hall on **Tuesday, October 1st**.

The water along the length of the River Ure was sampled at 45 sites on August 21st, from the top of Wensleydale to beyond Boroughbridge, by 41 volunteers working with the Yorkshire Dales River Trust (YDRT) and Stop Ure Pollution. This sampling was done to get a picture of the quality of the river and to identify sources of diffuse and point pollution when the level of the water in the river was low.

The chairman of SUP, Prof Richard Loukota, commented: "It was great to see that SUP volunteers made up almost 88% of the citizen scientists sampling the Ure. This confirmed how concerned our residents are about the state of the river and are prepared to do something about it." Charlotte Simons, YDRT's Catchment Partnership Senior Project Manager, who presented the initial results at the meeting on October 1st, said "This scale of testing has only been made possible due to the support of the volunteers."

The samples were sent to ALS independent accredited laboratories at Wakefield and Coventry with the cost of the testing being met by Yorkshire Water. There will be a second collection of samples along the river when the water level is high. SUP aims to be able to conduct fully independent testing as a follow up to the two sampling days carried out with YDRT.

There will be exhibitions about the water sampling and results from Stop Ure Pollution and Yorkshire Dales River Trust at the Quaker Meeting Houses at Bainbridge and Leyburn from **October 3rd to 5th**.

The exhibition at Leyburn Meeting House will be open from **2.00pm to 4.00pm on Thursday, October 3rd, and from 10.00am to 4.00pm on the Friday and Saturday**. That at Bainbridge Meeting House will be open from **10.00am to 4.00pm Thursday to Saturday**. Refreshments will be served at both. The exhibitions will be held in association with the national Quaker Week and to commemorate the 400th anniversary of the birth of George Fox, the founder of the Religious Society of Friends (Quakers).

## BAWB Schools News

September certainly came around quickly, but it's like we never left at BAWB!

We are so pleased that our Y5 and Y6 classes are now learning in the newly refurbished Rebecca Alderson Annexe, so named after our wonderful teaching assistant who truly made a difference to everyone who crossed her path.

Last week, seven girls from our federation headed down to The Wensleydale School for the annual cluster football tournament. The girls managed to go unbeaten in the tournament and bring the trophy home, all while finishing as top scorers in the competition! The girls showed fantastic collaboration, respect and teamwork and were a real credit to our federation.

Finally, this week our pupils have been busy getting their art work ready for our Harvest service next month. There are some beautiful pieces of art and the children have worked really hard getting them all ready. Next up – practising the songs!

## Whist Drives


Held at Gayle Club at **7.30pm** at a cost of £3.50 including tea and biscuits on

**Monday, October 14th and 28th.**

**Monday, November 11th and 25th.**

**Monday, December 9th.** (Xmas whist)

We always welcome new players. Please come and join us.



**FREE QUOTES**

**Carpets • Laminates • Vinyls • LVT  
Solid & Engineered Wood • Accessories**

## For All Of Your Flooring Needs!

NH Flooring in Richmond can fit quality flooring to any Houses, Apartments, Offices, Holiday Lets, Hotels, Pubs, Vans and anywhere else you want it.

**We offer a complete flooring service including:**

Supplying, Fitting, Screeding & Levelling,  
Repairing, Uplift & Removals, Trimming,  
Edge Whipping, Cladding and much more.

**NH Flooring - Richmond**

[www.nhflooring.co.uk](http://www.nhflooring.co.uk) 01748 822834

Unit 6 Borough Court, Borough Road, Richmond. DL10 4SX

## Dave Bowe

Gillian and family would like to say a massive thank you to everybody who sent cards, flowers etc and made donations following Dave's passing, a total of £851.97 was raised at his funeral service being split between the Robert Ogden Centre at the Friarage, Northallerton and Macmillan Cancer

**Hearing loss shouldn't make  
you feel isolated and anxious,  
we are here to help.**



**Hear & Now**  
Independent Hearing & Tinnitus Specialists

### For all your hearing needs!

- Hearing test
- Free hearing aid trials
- Ear wax removal
- Tinnitus assessment and therapies
- Hearing aid repairs and servicing

**CALL 01765 278 744**

8 Queen Street, Ripon, North Yorkshire HG4 1ED  
[info@hearandnowonline.co.uk](mailto:info@hearandnowonline.co.uk)  
[www.hearandnowonline.co.uk](http://www.hearandnowonline.co.uk)

**Slimming**  
WORLD

touching hearts, changing lives

Leyburn  
Methodist Hall

Every  
Wednesday 9am,  
4.30pm & 6pm

No need to book  
Just come along and start your journey to a  
slimmer you.

Call Helen for more info **07969 559998**

## Better Health Massage

Mobile Therapist, 8am to 8pm, 7days  
Improve overall general well being, inside and out.

**Ruth Boddy** MFHT, ITEC Dip. Massage  
[ruth@betterhealthmassage.co.uk](mailto:ruth@betterhealthmassage.co.uk)

Fully qualified and insured

**07773 781803**

[www.betterhealthmassage.co.uk](http://www.betterhealthmassage.co.uk)





## The Wensleydale Orchestra Needs You!

Can you read music? Have you ever played an instrument? Is there a lonely, neglected one hidden in a cupboard or the loft? When someone asks do you say "I used to play but..."?

The Wensleydale Orchestra needs you! And maybe we are just what *you* need. We are a group of totally amateur but enthusiastic and friendly musicians who play for fun. We have a dedicated, encouraging and patient conductor, and we would love some more players to join us this Autumn.

We meet in Bellerby Village Hall on **Monday evenings from 7.30pm to 9.30pm** (including a break for refreshments). We started on September 16th and go on till **December 2nd**, with a two-week break for the school half term. It doesn't matter one bit if you start late. You probably won't be the only one! Just turn up and join in. There are three 10 week sessions a year.

A little history. It started in the 1960s as the Hawes Chamber ensemble, and by 1993 had become The Wensleydale Philharmonic, with around 30 members. Since the late 2010s numbers have gradually fallen: without new members the orchestra will soon fold. It's a democratic community orchestra with room for everyone: no auditions, no minimum skill/grade level, the members decide whether to put on concerts. It currently only holds an annual 'open rehearsal' where everyone is welcome to come and listen....and stay for supper! They play for their own amusement.

Antonia Johnson is the organiser. "I play the oboe. I took it up as an adult, having not played anything before." She probably chose the most difficult instrument in the orchestra, and had no one to play with, so the oboe ended up in the cupboard. "And then my next door neighbours persuaded me to join the orchestra. Initially I was abysmal, but the buzz I got from playing with others, and the orchestra's support, gave me the impetus to improve. Now I love it."

"We play a wide range of music. This term we'll have a go at a couple of Hungarian Rhapsodies by Liszt, Wagner's overture to *Lohengrin*, a medley of Bing Crosby hits, and a Christmas themed collection. We've played Beethoven, Mozart and Elgar and ABBA (more complicated than you'd think!). All orchestral

instruments are welcome, particularly strings. Although we prefer fairly regular attendance, if you can only come occasionally we'd far rather see you than not. There is one member who lives abroad but joins in when in the UK. Our patient conductor is Brian Wilderoder, who also finds us a variety of music to play and ingeniously adapts it to suit the instruments we have."

Why not get that instrument out of the cupboard and come along to see if it suits you! **Ring Fiona on 07870 746992** or email **Antonia** at [johnstonantonia92@gmail.com](mailto:johnstonantonia92@gmail.com).

A.M.

## Hawes Primary School PTFA

Bag2school – Re-using unwanted textiles. We have arranged a bag2school collection on **Tuesday, October 22nd**. Good quality clothing, pairs of shoes, bags, hats, scarves, ties, jewellery and belts are all accepted, so please have a sort out and bring any items you'd like to leave (tied in black bin bags) to the school gates on the morning **by 9.00am**. The more we collect the more money we make!

Christmas Fair. **Saturday, November 23rd 10.00am – 4.00pm** in The Market Hall, Hawes: craft and festive gift stalls, chocolate tombola, raffle (£100 1st prize), games, refreshments and more. If you are interested in having a stall at our fair, please contact Anna Fagg for more details at [annaelord@yahoo.co.uk](mailto:annaelord@yahoo.co.uk).



## Visitor Centre

### Christmas Menu

18<sup>th</sup> November – 31<sup>st</sup> December

See website for our menu

Now taking bookings

### October Specials

Coffee week, Sausage week,  
Halloween week

### Cheese Experience

Half term adult 2 for 1 entry (present  
this)

Children **GO FREE**

### Christmas Shopping Evenings

Thurs 12<sup>th</sup> and 19<sup>th</sup> December.

20% off cheese & gifts. 10% off alcohol.  
Calvert's open 5-7pm.

[wensleydale.co.uk](http://wensleydale.co.uk)

**01969 667664**



**THE WENSLEYDALE SCHOOL  
& SIXTH FORM  
LEYBURN**

Our Open evening for current Year 6s is on **Thursday, October 3rd from 5.50pm**. If you are unable to attend or missed it, please do get in touch for a personal one to one tour. To make an appointment contact [Joshua.hadfield@wensleydaleschool.net](mailto:Joshua.hadfield@wensleydaleschool.net).

Applications have to be with North Yorkshire Admissions by **October 31st** and places will be allocated in early 2025.

Last year we were oversubscribed, which meant many students were unable to be offered a place. As from September 2024, we are full in Year 7 and only have a couple of places left in Year 9. Although we do currently have space in Years 8 and 10, we have processed seven new admissions in the first two weeks of September.

## **BARTLETT & ELECTRICALS**

| Domestic Appliance Servicing |  
| Installation |  
| Electrical Services |  
| Repairs |  
| Sales |  
| All makes and models |

[www.BartlettElectricals.co.uk](http://www.BartlettElectricals.co.uk)

Tel : 07920 401042

Email: Ben@BartlettElectricals.co.uk



Registered  
Heating  
Business



### **J.Parfitt Plumbing & Heating Ltd**

All aspects of domestic / commercial plumbing and heating work undertaken

Phone: **01969 650665**

Mobile: **07882 005261**

[www.parfittplumbing.co.uk](http://www.parfittplumbing.co.uk)

## **S Peacock**

### **Woodwork and Decorating**

- Fitting of skirting/architrave, doors, shelving
- Wood panelling •Bespoke Furniture
- Painting •Wallpapering

Contact Shaun on: **07794 246392**

Email: [shaunpeacock1983@gmail.com](mailto:shaunpeacock1983@gmail.com)



### **Seasoned Firewood Logs For Sale**

Hardwood and Softwood available.  
Bulk Bags, Bulk Loads and smaller bags available, also kindling bags.  
Can deliver locally – Hawes Area

**01969 667916** after 5.00pm

**Mobile: 07974 507825**

any time; P.O.A

## **JOHN & TED DINSDALE**

Builders ~ Roofers ~ Renovations ~ Extensions

*All aspects of property maintenance.  
Fireplaces, Wood Burners supplied and fitted*

**01969 667 718 ~ 07511 424 865**

## **MFW Aga & Boiler Services**

Specialising in the servicing of Aga / Rayburn cookers and domestic oil boilers.

All Dales area covered

For service please contact Mike on:

Phone: **01609 779751** Mobile: **07731 349276**

## Don't Forget the Story Writing Competition

Remember, your story can be about anything that captures your imagination but it must start with the words **"The noise was louder now"**.

There are two categories in the competition; those in years 3 and 4 and those in years 5 and 6. Primary schools will be encouraging children to enter and can help with advice and access to computers etc.

### How to enter:

Your story must be type written and between 300 and 500 words long. Email your entry to [uwnlinput@gmail.com](mailto:uwnlinput@gmail.com) to reach us by **midnight on Friday, November 8th**. Ensure your name, year group, and the name of your school is sent in with your entry.

The winner in each age group will receive a £50 book voucher and a trophy to keep. The runners up will receive a £25 book voucher. All entrants will receive a certificate.

The winning stories will be published in the February 2025 edition of the UWNL. The winning children's Primary School in each age group will hold the Alan Watkinson Memorial Shield for a year and receive a book voucher for encouraging and collating entries.

Full rules can be found in the September issue of the Newsletter at <http://www.upperwensleydalenewsletter.co.uk/news/2024/issue312.pdf>.

## Leyburn and District u3a

### Filling Young Minds and Tums

Mary's Meals is a UK based low cost charity with a simple idea that works: by providing a daily meal in a place of learning, chronically hungry children can be attracted into the classroom, where they can access the education that will hopefully one day lift them and their communities out of poverty.

Mary's Meals began by feeding just 200 children in Malawi in 2002. Now it is currently feeding more than two million children across the globe every school day. Despite these successes, its work is far from over; 64 million children worldwide miss school because of poverty and millions more sit in classrooms across the world, so hungry that they are unable to concentrate and learn. Mary's Meals believes that every child deserves an education and enough to eat!

On **Friday, October 18th**, Christine Pratt and Dudley Nixon, Community Volunteers with the charity will explain how Mary's Meals has grown from humble beginnings and where the charity works today. Everyone is welcome to attend.

We meet on the third Friday of the month at Leyburn Arts and Community Centre, Richmond Road, Leyburn DL8 5DL. Doors open at **10.00am for 10.30am**. Annual membership is £12 or £20 for two people at the same address. For details contact **Sue Mellish 01748 850471**, [susiemellish@g.mail.com](mailto:susiemellish@g.mail.com).

## Arena Physio and sports rehab.

physiotherapy & sports rehabilitation clinic

**Assessment, treatment and rehabilitation of  
musculoskeletal pain, injury and dysfunction.**

### Appointments available at:

Carperby Football Club, Carperby,  
Leyburn, North Yorkshire. DL8 4DJ.

or

Darlington Mowden Park RFC  
Darlington Arena, Neasham Road,  
Darlington. DL2 1DL

**Tel: 01325 728092 Mob: 07799767075**

**[www.arenaphysio.co.uk](http://www.arenaphysio.co.uk)**



Village Pub, Restaurant and Hotel

Located in Askrigg, in the heart of Wensleydale

**12 Comfortable En-Suite Bedrooms**

*Double & Twin Rooms*

**Pub & Restaurant**

*Great Food and Drinks*

**Private Car Park**

**Beer Garden**

Main Street | Askrigg | DL8 3HG  
01969 650515 | [info@middlehouseaskrigg.co.uk](mailto:info@middlehouseaskrigg.co.uk)  
[www.middlehouseaskrigg.co.uk](http://www.middlehouseaskrigg.co.uk)

## Gayle Institute – Coffee Morning

A big thank you for everyone's support on Thursday, September 5th when we raised £340.50 for Sarcoma Cancer and Parkinson's Disease.

The next coffee morning will be on **October 10th from 10.00am to noon** and monthly on every second Thursday thereafter. There will be a 'bring and buy' cake stall and all are welcome. Please support. Thanks again.

Sue Richardson

## Bainbridge WI invites you to a Christmas Fair

**Saturday, November 9th**  
Bainbridge Village Hall  
**10.00am – 4.00pm**

Local handmade crafts and cakes for sale  
Come and buy your Christmas gifts, decorations and so much more!



## James Peacock SOLID FUEL MERCHANT Bainbridge

Good quality fuels at competitive prices.  
Smokeless Fuel, Logs and Sticks all available.  
Deliveries in Wensleydale, Swaledale and  
Coverdale. No delivery too small.

## James Peacock PRIVATE HIRE Bainbridge

4-8 seats, Airport runs, pubs, stations, walking  
or cycling holiday, luggage transfers.....

**Tel: 01969 650212 / 650465**

Email: [info@james-peacock.co.uk](mailto:info@james-peacock.co.uk)

Web: [www.james-peacock.co.uk](http://www.james-peacock.co.uk)

## COPY SHOP PRINTING ~ PAPER SCANNING & LAMINATING

*Wensleydale Press*

Burtersett Road, Hawes 01969 667575  
[wpress@tiscali.co.uk](mailto:wpress@tiscali.co.uk)

## UPPER DALES HOME CARE



Home care services are specifically designed to provide assistance with daily living activities in the comfort of an individual's home.



### OUR SERVICES



Help at Home  
includes:  
Cleaning  
Laundry  
Light Chores  
Meal Prep



Company &  
Support:  
Companionship  
either in person  
or by phone



Carers' Break  
Sitting Services:  
Support for loved  
ones



**CONTACT US**  
01969 667400  
or 07817 711227



**VISIT OUR WEBSITE**  
[www.udcp.co.uk](http://www.udcp.co.uk)



**Yore Mill**  
CRAFT SHOP & GALLERY

We have a wide selection of artists and makers from Yorkshire and across the North of England overlooking the beautiful Aysgarth Falls.

Check our website for further details and opening hours.

**Yore Mill, Aysgarth DL8 3SR**

Web: [yoremillcraftshopandgallery.co.uk](http://yoremillcraftshopandgallery.co.uk)  
01969-662829

## Cumbria Stove Centre

Supply and installation of wood,  
coal and gas stoves.

- ◆ Flue and chimney lining services.
- ◆ Inglenook specialists.
- ◆ Fully qualified and experienced Hetas engineers

**01539 821061 (day) - 01539 625227 (eve)**  
**SHOWROOM: 34a, Main Street, Staveley**

***OCTOBER WHATS ON LISTING;  
please add these dates to your Diary***

**October**

- 3 Wensleydale School Open Evening for Year 6. 5.50pm. See p.17.
- 3-5 Stop Ure Pollution exhibitions at Leyburn and Bainbridge Meeting Houses. See p.14.
- 4 Concert. Reeth Memorial Hall. 8.00pm. See p.26.
- 4 Dominoes. Carperby Village Institute. 7.30pm.
- 5 Charity Coffee Morning. Thoralby Village Hall See p.28.
- 5 Dales River Trust Open Day. Gilling West Village Hall. 1.00pm.
- 10 Gayle Institute. Charity Coffee Morning, 10.00am - noon. See p.19.
- 11 Concert. Askrigg Village Hall. 7.30pm. See p.32.
- 12 'Has Wensleydale Got Talent'. Wensley Church. 6.30pm. See p.30.
- 14 Whist Drive. Gayle Club. 7.30pm. See p.15.
- 16 Local History Group lecture. Harmby Village Hall. 2.00pm. See p.14.
- 17-20 Leyburn Jazz Festival. See p.24.
- 17 Wellness Walk. Bainbridge. 10.00am. See p.24.
18. Leyburn u3a lecture. At LACC. 10.00am. See p.18.
- 18, 19 Designer Makers Markets. Tennants, Leyburn. 10.00am to 4.00pm. See p.27.
- 19 Concert. Reeth Memorial Hall. 8.00pm. See p.26.
- 19 Mobile recycling. Hawes Business Park. 9.00am to 1.00pm. See p.7.
- 20 Wensleydale Railway Tea Train. 2.30pm. See p.35.
- 22 Bag2school collection. Hawes Primary School. See p.16.
- 23 Upper Dales Luncheon Club. Street Head Inn. 12.30pm. See p.31.
- 23 Friends of the Dales on-line talk. 5.00pm.
- 23 Charity Bingo. Hawes Market Hall. 7.00pm for 7.30pm. See p.4.
- 26 Wensleydale Railway Gin Train Experience. See p.35.
- 26 Music from the Movies. St.Margaret's Church Hawes. 2.30pm. See p.11.

- 27 British Summer Time Ends. 2.00am. Clocks back an hour.
- 28 Whist Drive. Gayle Club. 7.30pm. See p.15.
- 30 Thornton Rust Village Institute Displays. Afternoon. See p.7.

**November**

- 2 Thornton Rust Village Institute Displays. Morning. See p.7.

**News from Dales Countryside Museum**

Opening times: Daily **10.00am to 5.00pm**  
February to October, **10.00am to 4.00pm**  
November and December. Closed **Christmas Eve to Boxing Day and January 6th to 31st**.  
Last entry one hour before closing.

Contact: [hawes@yorkshiredales.org.uk](mailto:hawes@yorkshiredales.org.uk) or call **01969 666210**.

**Storyland: Pathways Through Time - September 13th to January 5th 2025**

Artist Penny Hunt became increasingly fascinated with the stories of the drovers, men who were trusted to take a whole village's cattle from the wilds of northern Scotland on a long trek along the drove routes, to the fattening grounds of Norfolk, before being sold in London markets.

This exhibition explores how time has changed the landscapes they knew, how the historical remnants make us feel connected with those who went before. Landscapes are shown through the colours of the plaid the men wore, little clues to the treasures they carried and items from modern life found along the ancient tracks. There will be associated events, so take a look at our website.

**Yorkshire Dales Young Archaeologists' Club:**

The club meets once a month on a Saturday morning, 10-12. Our meeting in September was off site in Wharfedale and the group explored Threshfield Quarry, discovering more about the lime kilns, rail transport and history of the site with Roger Martlew.

Young people age 8 – 17 years are welcome to come along for a free trial session and the next opportunity to do this will be our November meeting. Please call **01969 666210**

or email [dcm@yorkshiredales.org.uk](mailto:dcm@yorkshiredales.org.uk) if your child might be interested in joining us.

**Education and community engagement:** The take up for our loan boxes has been brilliant. There will be classrooms all over the area filled with objects and archives from our loan boxes. If you'd like your class to be able to explore real objects in the classroom, or to take part in one of our free learning sessions either here at the museum or in school, do get in touch.

**Volunteers:** Our fabulous team have been busy helping with conservation work, environmental monitoring, cataloguing, scanning collections, carrying out visitor surveys and keeping our trail looking great. If you'd like to get involved, do get in touch via [dcm@yorkshiredales.org.uk](mailto:dcm@yorkshiredales.org.uk).

### **Sedbergh, Hardraw, and the Kitchener camp rescue in World War II**

Claire Weissenberg gave a fascinating talk on the company of German-speaking soldiers who were billeted in Sedbergh and Hardraw during World War II. Clare's father, Werner Weissenberg, had arrived on the Kitchener camp rescue from Germany to Britain in June 1939. Later, when serving in the British Army he found a warm welcome and good friends in Sedbergh and Hardraw. We would love to hear from you if you know anything about their time here. Please do look through old photos to see if you have any from 1942 as the men were welcomed into community life, it may just be that no one has yet recognised that the photos include them. If you can help Clare to find out more about this fascinating – yet largely forgotten – piece of wartime history that would be wonderful.

Here are the DCM events coming up in October

#### **A Taste in Time**

**Sunday, October 13th, 10.00am – 4.00pm.**

Enjoy our Taste in Time Experience! You'll explore our Victorian kitchen and collection, make your own chutney to take home and enjoy a delicious lunch. In the afternoon, have a go at making your own oatcake and butter for a cheese tasting session. £50 - lunch included - booking essential.

**FDCM lecture. "One on two, two on one"**

**Friday, October 18th, 7.30pm – 9.00pm.**

Tony Keates explains the history and construction of dry stone walls.

### **Oil and Cold Wax Art Workshop with Penny Hunt**

**Sunday, October 27th, 10.00am – 4.00pm.**

Full day adult art workshop to link with 'Storyland – pathways through time', an exhibition exploring the landscapes of the Drovers. This will include sketching, drawing with natural materials and painting with oil and wax. £50 - lunch included – booking essential.

#### **Family Art workshop**

**Tuesday, October 29th, 10.00am - noon and 1.00pm - 3.00pm.**

In this two hour family workshop you will use Tetra Pak cartons as printing plates. The irregular shapes and unorthodox appearance creates interest before you even start your design. You will make your image and print it using water based inks. Booking essential – included in Museum entry

#### **Family Craft Activity**

**Thursday, October 31st, 1.00pm - 4.00pm.**

Making creatures of the Night. Time slot allocated on arrival.

#### **Hands on History - Festivals and light**

**Friday, November 1st, 1.00pm - 4.00pm.**

The history of lights in festivals - from bonfires to Jack O' Lanterns and make your own paper lantern. Time slot allocated on arrival.

#### **FDCM lecture**

**Friday, November 15th, 7.30pm - 9.00pm.**

Andrew Fagg: 'Voices of the Dales and the treasures of the museum's oral history archive Friends of the Dales Countryside Museum lecture. Non members welcome, donations appreciated.

#### **Meet Mother Christmas**

**Saturday, November 30th,  
10.30am - 12.30pm and 1.30pm - 3.30pm.**

Come along to meet Mother Christmas and receive a gift from Santa, write and post your letter to Santa, have fun doing some Christmas crafting and enjoy a luxury hot chocolate at the Firebox café.  
£8 Booking essential.



## Thoraltby and District WI

On Tuesday September 17th, Sara Baldwin-Cole entertained us and demonstrated how to make and decorate a gift box. By the end of the evening we had a pretty box to take home and use.

On Tuesday, August 20th, Valerie Welti gave a fascinating and informative presentation about 'The Canary Girl'. Her enthusiasm engaged us all as she talked about the 'Forgotten Heroine' of WW1 and WW2. These were women, many teenagers, who worked tirelessly in the ammunition factories. They were called the 'Munitionettes' as they filled the bomb shells with cordite mixed with other raw chemicals and TNT. Some lost their limbs and lives when there were explosions. Amazingly, these women have never been recognised for their war effort.

During August our WI organised a trip to Masham to follow the 'Swift Walk'. It was a very enjoyable day with perfect weather as we spotted carvings and art work depicting swifts around the town. At the same time we learned many historical facts about Masham. The lunch at the White Bear was lovely as we sat amongst the flower boxes in the sunshine. A great day was had by all.

'Soup and Sweet' has started again and will run until April. For £5, the WI will serve a variety of soups and sweets followed by a cuppa. Everyone is welcome to come along for a delicious lunch and to meet friends.

AYSGARTH  
FALLS  
HOTEL



**Now serving Afternoon Tea by advanced booking  
Wednesday - Saturday 12pm - 4pm**



**Food served daily from 12pm**

[www.aysgarthfallshotel.com](http://www.aysgarthfallshotel.com)  
01969 663775

## Alex Kravchenko

BSc (Hons) MChS

**Chiropodist / Podiatrist**  
Member of the Health Professions Council

**Practising at**  
**Yorkshire Foot Clinics**  
**25, Frenchgate, Richmond DL10 4NZ**  
**Bishop Auckland/ Hawes 667449**

**Clinic Tel 01748 850020**  
Email: [yorkshirefootclinics@yahoo.co.uk](mailto:yorkshirefootclinics@yahoo.co.uk)

## MICHAEL MOORE and SON BUILDER AND PLASTERER

**Family Business Est 1906**

Alterations, pointing, stonework,  
Roof work, garden patios, paths,  
plastering, insulated plaster  
boarding,  
Over-skimming Artex walls and  
ceilings, tiling walls and floors,  
underfloor heating, PVC sash  
windows.

**Tel: 01969 667045**  
**Mob: 07968 684942**  
**Hawes DL8 3NS**

# H & M

CRAFTSMEN  
Ingleton | Est. 1987

**KITCHENS · BEDROOMS · STUDIES**

High Quality, Bespoke Furniture With  
Full Design And Fitting Service



**Showroom: Ingleton Industrial Estate, LA6 3NU**  
**015242 41535 · [kitchensandbedrooms.co.uk](http://kitchensandbedrooms.co.uk)**



## West Witton Shop

The shop at West Witton has new owners. Phil and Lucy moved in on **August 13th**. The good news is that, unlike some other shops in the dales, it is set to continue as a shop. The locals must be delighted.

In fact, Phil says they have every intention of expanding the range of goods for sale. Understandably, before the previous owners left, it had got fairly run down, but since then considerable stock has built up, mostly groceries, including bacon, sausage and baking treats, but also alcohol, newspapers and general household items. They are listening carefully to what people want and responding accordingly.

So where have they come from and why come here? Well, they still have a shop in a village near Ashford in Kent but the lease is about to expire, so they have been looking for a village shop in a nice location. Previous visits to the Yorkshire Dales had always impressed and West Witton fitted the bill perfectly.

They both have plenty of experience in shopkeeping, having run the Ashford shop for eight years and both being in the retail trade before that. West Witton is a smaller village and Phil noticed the drop in trade once the busy holiday season had passed, but they hope to reorganise and expand the shop space, open up an adjacent self-contained room which could function as an AirBnB and, most ambitious of all, apply for a Post Office, since they are both qualified and experienced sub-postmasters. They would be able to offer up to sixty hours a week of P.O. time because the shop is open from **8.00am until 6.00pm on Monday to Saturday (and 8.00am to noon on Sunday)**. They are aware that the application might be a bit of a long shot with other P.O.s only four miles away in each direction, but let's hope that they are successful.

Those opening hours make the shop very accessible and once they become more widely known, it is likely that passing trade will be attracted as well as local people. Whether it will be possible to sustain such long hours in the depths of winter remains to be seen. As with all local facilities it is definitely a case of use it or lose it. We wish Phil and Lucy well as they settle into their new venture.

N. P.

## Withywood Stores

West Witton



### Proud to stock local produce

Fresh bread, cakes and savouries

Local milk, dairy and cold meats, fresh fruit and vegetables

Masham sausages, free range eggs, honey made in West Witton

Selection of wines, Wensleydale Brewery ales

Newspapers, magazines, stationery and greetings cards

Selection of household items. New lines added weekly.

Please support your village shop, to keep it secure for the future.

**Opening: Mon-Friday 8am-6pm**  
**Saturday 8am-6pm**  
**Sundays 8am-12 noon**

[withywoodstores@gmail.com](mailto:withywoodstores@gmail.com)

**01969 326484**



### A personal friendly service for 'all creatures great and small'

- Small animal consultations, diagnostics, and surgery
- Budget friendly preventative health care plans for dogs, cats, and horses
- Farm Animal routine work
- Ambulatory equine services
- In-house 24-hour emergency service for small animal, farm, and equine

**01969 422201**

[www.wensleydale-vets.com](http://www.wensleydale-vets.com)

[info@wensleydale-vets.com](mailto:info@wensleydale-vets.com)



## Orthopaedic Massage

Back & neck pain, strains & sprains  
 Nerve injuries, sciatica, chronic pain

**Robust Covid-Secure  
 procedures in place**

**Clinic in Hawes**

**07975 999373**

Find me on **Facebook** [www.reflex-om.com](http://www.reflex-om.com)



## Blueboxt October Update

### Autumn Events:

**Young People's Workshop – Leyburn Jazz Festival:** A fantastic opportunity for musicians and singers aged 11-19 to be creative and work with saxophonist Helena Summerfield. Sessions are FREE and take place on **Sunday, October 6th and 13th, 2.00pm – 5.00pm** and **Saturday, October 19th, 10.30am - 12.30pm** at Leyburn Methodist Church Hall.

Leyburn Jazz Festival takes place **Thursday, October 17th to Sunday, October 20th**. Full details at [leyburnjazz.org](http://leyburnjazz.org) or pick up a festival programme from community display points.

**Halloween Activity Afternoon:** Join us for a spooky afternoon of creative fun at Thornborough Hall, Leyburn on **Tuesday, October, 29th from 1.00pm to 4.00pm**. Activities include Halloween Bingo, Pumpkin carving and bowling, Apple bobbing and a slime tank! Places cost £15 per person which includes healthy snacks and a pumpkin and T-Light to take home.

**Wensleydale Young Musician of the Year:** Registration is now open to young people aged from 7 to 18 years old. The competition hosted by The Wensleydale Rotary Club and

BlueBoxt will be held at St. Matthew's Church, Leyburn on **Sunday, November 24th from 2.00pm**. There are classes for soloists, ensembles and groups featuring acoustic and electric instruments including voice. Full details at [www.wensleydale.org](http://www.wensleydale.org).

A Magical Christmas Concert takes place on **Saturday, December 7th, 7.00pm** at Thoraby Village Hall and **Sunday, December 15th, 2.00pm** at Leyburn Arts and Community Centre. Colin Bailey will be joined by Gail Barlow and young performers from the Play, Record, Perform project.

Christmas Together Concert with Light My Choir and Leyburn Jazz Collective takes place on **Saturday, December 14th, 2.00pm** at St. Matthew's Church, Leyburn.

BlueBoxt Productions presents Santa's Spectacular - a magical Christmas adventure for all ages. Join Tinsel McJolly, Mother Christmas and Father Christmas throughout December.

You can call or text our box office and enquiry line on **01969 745810** | email: [info@blueboxt.org](mailto:info@blueboxt.org), [www.wensleydale.org](http://www.wensleydale.org), [www.leyburnjazz.org](http://www.leyburnjazz.org), [www.blueboxt.org](http://www.blueboxt.org).

## October Wellness Walk

The next Wellness Walk in Wensleydale will be on **Thursday, October 17th** and we will revisit the delightful Skell Gill, leaving Bainbridge around **10.00am**. The walk, led by qualified Mountain Leader Jo Lade of ReFlex Orthopaedic Massage, heads along the old railway line with spectacular views ahead of us of Wether Fell. We turn north to cross the minor road and head east on an easy undulating path through grassy pastures winding our way towards the hamlet of Skell Gill where we turn south and head back towards Bainbridge. The walk is just short of 5.5miles, taking around 2.5hrs. There will be one more Wellness Walk on **November 21st** before we take a short break until the New Year, so do come and join us on our last two walks of 2024.

All our walks are free and booking is ESSENTIAL – head over to the Wellness Walks website to do this and if you are able please do make a donation when booking as they help us bring Wellness Walks to more communities across the UK.

## SANDERSON & CO.

### "Decorating Supplies"

#### DULUX COLOUR ADVICE CENTRE

Scanner Colour  
Matching & Paint Mixing



Stockist of Leading Brands including,  
**Dulux, Crown, Leyland,  
Ronseal, Cuprinol**

Extensive Wallpaper Pattern Library  
Trade & Quantity Discounts Available

**High Street, Leyburn DL8 5AQ  
01969 623143**

Email: [sandersonandcoleyburn@gmail.com](mailto:sandersonandcoleyburn@gmail.com)

#### Also CALOR & Camping Gaz stockist

Mobile heaters and accessories

Free local delivery



## Heavens Above

We might be in for a really brilliant comet this month. If it survived its fiery passage around the Sun at the end of September, comet Tsuchinshan-ATLAS should be a spectacular sight low in the western twilight from **October 13th** until the end of the month. Some predictions say it could rival Venus for brightness and develop an exceptionally long tail. As we all know, however, comets are notoriously fickle creatures and like so many others it could turn out to be a complete flop. As usual we'll just have to cross our fingers and wait and see.

On **October 17th** we have another supermoon. It's the biggest and brightest Full Moon of the year lying just 357,367 kilometres away from the Earth. It is well worth looking out for especially just after its risen and is still close to the horizon.

A couple of days afterwards, on **October**

## Bainbridge Vets Ltd

**A comprehensive, friendly veterinary service treating animals large and small  
24 hour emergency service.**

### Open Surgery

Monday-Friday 9.00-9.30am and 2.00- 2.30pm  
Saturday morning 9.00-9.30am  
(appointments available at other times)

**01969 650263**

**19th**, the Moon passes just below the centre of the lovely Pleiades star cluster blotting out some of its stars – a striking sight viewed with decent sized binoculars. Look out for it over in the east between **7.30pm and 10.30pm**. On **October 20th and 21st** you'll find the Solar System's largest planet, Jupiter, lying near to the Moon. It's a brilliant object shining at magnitude minus 2.3 - far brighter than any star - so you can't possibly miss it. This month's major meteor shower, the Orionids, also comes to peak on **October 20th/21st** but is badly affected by strong moonlight this year.

Now that Autumn is here the southern sky is dominated by the season's main constellation, Pegasus, the winged horse of the old Greek myths. Its outline doesn't look anything like a horse to be honest, partly because only its head and upper body is outlined on star maps and partly because its viewed upside down from our part of the world. Pegasus' main feature is its Great Square formed by four medium-bright stars which stand out in a pretty barren part of the sky. Bear in mind, though, that star charts tend to make the Square look smaller and brighter than it appears in the sky. You can test your eyesight by counting the number of stars visible inside the Square. Under really fine skies you should be able to see 12 or 13.

Finally this month, don't forget to put your clocks back an hour when British Summer Time comes to an end – perish the thought – at **2.00am on October 27th**. Have clear skies!

**Al Bireo**



## Hawes Countrystore



"For All The Farmers Needs"

**Not Just All Your Agricultural Supplies!  
Country clothing, work ware & footwear.  
Pet, equine, poultry, wild bird feed,  
garden supplies and household goods!**

**Call in & see for yourself!**

**Tel- 01969 667 334 Fax- 01969 667 335**  
**Monday – Friday 8am – 5pm Saturday 9am – Noon**

**CBAL Fuels- 01524 599 333**

**Head Office (Carlisle)- 01228 552 650**

**Hawes @carrs-billington.com**  
**www.carrs-billington.com Follow us**



## EDGLEY GARAGE

**Edgley Garage, Aysgarth,  
Leyburn, North Yorkshire,  
DL8 3AD**

**01969 663094**

**[edgleygarage@yahoo.com](mailto:edgleygarage@yahoo.com)**

**MOT testing; Full servicing;  
Air conditioning service;  
Brakes, clutches and all  
general repairs to vehicles.**

## Wensleydale Tournament 2025

Now is the chance to show off your hidden talents by entering the 115th Wensleydale Tournament of Music and Speech, which will take place next March. This friendly competition is open to all ages with a wide range of classes, from poetry and prose recitals to music of all kinds, instrumental and voice, both solo and group. Advice and information about entering is always available from our Secretary, Mrs. Wilson (details below).

The syllabus of classes will be available later this month from Hewson's of Leyburn, or from Leyburn, Richmond and Bedale libraries, or from our website [www.wensleydaletos.co.uk](http://www.wensleydaletos.co.uk).

If you would prefer to receive a syllabus by post, please call **Mrs. Wilson on 07423 532544**, or email [secretary.wts@outlook.com](mailto:secretary.wts@outlook.com).

## Penhill Ladies Coach Trip

Penhill Ladies are arranging a coach trip to Boundary Mill, Colne, on **Thursday November 21st. Leaving Leyburn at 9.00am, pick up at Redmire at 9.10am, and at Carperby at 9.15am.** The cost is £15.00. All welcome. This is a chance to Christmas shop with an easy ride to Boundary Mill and without parking worries.

For further information and booking, contact **Jill 07393 893773. or Christine 07776 132966.**



Family run Teashop situated next to the magnificent Aysgarth Falls

Light Lunches ~ Soup & Sandwiches ~ Afternoon Teas

Cakes, Scones, Biscuits & Traybakes

Muddy Boots & Dogs Welcome ~ Card Payments Accepted

01969 663446

## J. W. COCKETT and SON

**Family Butchers**

Estd. 1854

**Wholesale and Retail Bakers**

**Main Street, Hawes**

**Tel 01969 667251**

**Best Quality Meats**

**High Class Baking**

**Freezer Orders Supplied**

## Reeth Memorial Hall Events

Thanks to everyone who has been to one of our concerts already this year. Over 750 people at nine events have raised funds for the hall.

**Friday, October 4th** – Blackbeard's Tea Party.

Drums, electric guitars, fiddle, melodeon and 4-part vocal harmonies combine to create music that is drenched in tradition but filtered through a kaleidoscope of modern rock and pop. Tickets £17(£19 door).

**Saturday, October 19th** – Bard Edrington V and Karina Wilson.

Songs and tunes inspired by the old time music of the Appalachian mountains and delta blues on guitar, banjo and fiddle. They are 2/3 of The Hoth Brothers who played here last year to over 80 people. Tickets £16(£18 door).

**Friday, November 15th** – Bruce Molsky

An ambassador for America's old-time mountain music, learnt from its legendary pioneers, he seduces audiences with a combination of rhythmic and melodic virtuosity and relaxed conversational wit.

Tickets £17(£19 door).

Tickets for concerts are available from Reeth PO or phone **Glen Steward (01748 884989)** or visit [www.reethmemorialhall.co.uk](http://www.reethmemorialhall.co.uk) – tickets are half-price for under 16s. All concerts **8.00pm** unless otherwise stated.

≈8,000 residential properties are at risk of flooding in the SUNO\* catchment.

We're working to change that. Chat to see how this will impact you.



Scan HERE  
or text hello ousewem 13  
to 07700 137 717



**OUSEWEM**

Rising Waters | Rooted Solutions

\*The river catchments of the Swale, Ure and Nidd merge upstream of the City of York to create the River Ouse (SUNO catchment).

All messages are anonymous. Standard messaging rates apply. For more information visit: [fb.cityofyork-privacy](http://fb.cityofyork-privacy)

## Ribbon Display Coming to West Witton for Baby Loss Awareness Week

Local Sands supporter Joy Baggaley will be giving bereaved families in the Yorkshire Dales the opportunity to come together this Baby Loss Awareness Week, **October 9th to 15th**. Baby Loss Awareness Week is led by Sands, a charity that works to save babies' lives and support bereaved families. The Week is a time for everyone in the baby loss community and beyond to come together, to remember much-loved and missed babies, and raise awareness of pregnancy and baby loss.

This special week is represented by its blue and pink ribbon logo. This image has been the inspiration to create Ribbon Displays up and down the UK, in every community, inviting those who have experienced loss to come together and remember their babies. Blue, pink and white ribbons displaying the names of the babies being remembered will be added to the display outside Withywood Stores in West Witton from **October 9th** and will remain in place until the **15th**.

Ribbons will be available in the shop. Donations to Sands gratefully received either through our Just Giving page or the collection box in the shop: <https://www.justgiving.com/page/joyce-baggaley-1726741080775?newPage=true#sharePage>.

Thanks to the members of the West Witton Woolpack for their generous contributions to our window display.

## J. Wilman Property Clearance Solutions

Providing Property Clearance and Waste Removal Services in the Dales

Probate, Residential and Commercial Clearances, Scrap Metal Recycling, Yard /Garden Clearances.

All Work Considered

**Tel 07791656380 or email  
jtw9@live.co.uk for a  
Free No Obligation Quote.**

# Designer Makers

## MARKET

Friday & Saturday 18<sup>th</sup> & 19<sup>th</sup> October  
10am to 4pm

**THE GARDEN ROOMS**  
at Tennants, Leyburn DL8 5SG

**Unique handcrafted goods  
direct from the maker**



Two day event, spread over two floors and showcasing approximately thirty 'handpicked' designers, artists & craftspeople from around the region

DEMONSTRATIONS & OPPORTUNITIES TO 'HAVE-A-GO'

For more information and a list of stallholders go to [www.designermakersmarket.co.uk](http://www.designermakersmarket.co.uk) or our facebook page 

 Admission is free but a donation for Herriot Hospice Homecare would be gratefully received

THE GARDEN ROOMS CAFE AND BISTRO  
OPEN BOTH DAYS - BOOKINGS STRONGLY ADVISED

THE GARDEN ROOMS



## JB TV AERIAL & SATELLITE SERVICES



**John Banks**  
Proprietor

Telephone: 07891 944175  
Email: [johnbankshawes@gmail.com](mailto:johnbankshawes@gmail.com)



## WCF Fuels North West



**Red Diesel · White Diesel · Kerosene  
AdBlue · IHO · Agamax · Lubricants  
Additives · Fuel Cards · Tank Monitors**

Order online at [www.wcfnw.co.uk](http://www.wcfnw.co.uk)  
Email us at: [enquires@wcfnw.co.uk](mailto:enquires@wcfnw.co.uk)  
or call our friendly team on **01524 733669**



## News From Sycamore Hall

We held a coffee morning in aid of Diabetes UK and were delighted to raise around £180 for that charity. Some of our residents had a trip out to Strikes Garden Centre at Northallerton where they enjoyed lunch before going a bit wild in the shopping area.

We had a great afternoon when Sarah came along from the Dales Countryside Museum to give us a slide show and talk about farming in the Dales. Several of our residents have spent their lives farming and were able to contribute to the event with their memories and photographs. In October, we are having a visit by Jane from the DCM who is going to give us a talk about Yorkshire Dialect - and see if we can add anything to her knowledge. We have shown a film featuring villages of the Yorkshire Dales and in October have another coming up about life in the Dales which we hope will be entertaining.

We have also celebrated Don's 90th birthday with a party featuring a vintage afternoon tea and entertainment by Andy. Thanks to Don's family for putting this on for us.

We now have a very keen group of residents who love to play dominoes - as often as they can. It is getting quite competitive, but they are having great fun. Generally speaking, they seem to play on Monday and Tuesday afternoons so please come along and join in.

On **Thursday, October 17th** we will be holding a Coffee Morning in aid of MacMillan. This will start at **10.30am** and we would love you to come and join us. There will be tea/coffee and cake as well as a raffle so do come along,

We are delighted that the Post Office has returned and with a familiar face. We hope Alice enjoys her new role and we wish Julie a speedy recovery.

Our small businesses are now planning for that festive celebration that is fast approaching. Mabel and Maisy's Mini Emporium is now stocking Christmas gift ideas so come along and see what there is on offer.

Meanwhile, don't forget our regular events:-

### Weekly Events

<b>Mondays, 2.00pm</b>	Knit and Natter
<b>Tuesdays, 10.30am</b>	Ron's Quiz or Karen's Bingo

<b>Tuesdays, 2.00pm</b>	Dominoes
<b>Thursdays, 10.30am</b>	Coffee Morning
<b>Fridays, 11.00am</b>	Gentle Seated Exercise
Monthly Events	
<b>2nd Monday</b>	Monthly Gents Club
<b>1st Friday, 10.00am</b>	Short Holy Communion service with Revd Dave Clarke
<b>Last Sunday, 10.45am</b>	Methodist Service

You are very welcome to join us at any of these events.

Our small businesses (Sycamore Restaurant, Sonja's Hair Salon with Mabel and Maisy's Mini Emporium and Sycamore Country Store) are ready to welcome you and offer some wonderful facilities right on our doorstep. The Post Office is also here on **Mondays and Wednesdays** between **9.00am and 11.00am** for your postal and banking needs and the Library is available all day and has internet access. Pay us a visit. If you have any queries or would like to discuss the availability of apartments, please contact the Manager, **Nicky Cooper**, on **0370-192-4055**.

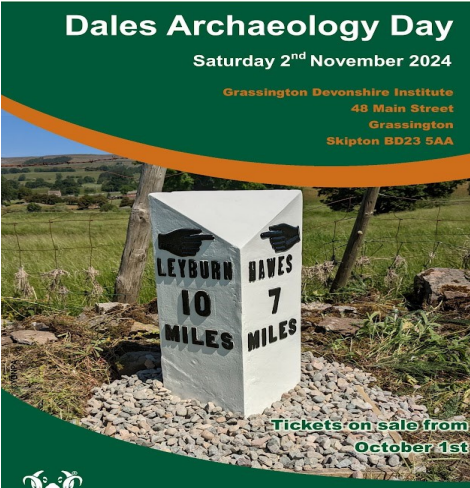
## Charity Coffee morning

**Saturday, October 5th**

Thoralby Village Hall

**10.00am to 1.00pm**

in aid of Herriot Hospice Homecare.



**Dales Archaeology Day**  
Saturday 2<sup>nd</sup> November 2024

Grassington Devonshire Institute  
48 Main Street  
Grassington  
Skipton BD23 5AA

Tickets on sale from  
October 1st

**YORKSHIRE DALES**  
National Park Authority  
[www.yorkshiredales.org.uk](http://www.yorkshiredales.org.uk)

## Leyburn Arts and Community Centre

Some requests this month for those with a little time on their hands!

Do you like watching films or theatre? Interested in social media? We have volunteer vacancies to help run our cinema and social media. Films are screened using a DVD-based home cinema system and scheduled posts to Facebook, X and Instagram are created using the Buffer social media tool. If you are interested in helping out in these areas please get in touch. Informal training and ongoing support available.

Do you like helping people? Have you got good IT skills? Have you got 2 - 3 hours to spare each week? Do you know someone who fits this profile? We are seeking Digital Champions to help others with their online needs, to increase confidence, give support and help them keep safe from online scams, to offer support with paying bills, booking health appointments, apply for a bus pass or blue badge, make an online purchase and to increase their level of digital skills. If you think you could support then please get in touch for an informal chat. Training will be available. Based in the Arts Centre or our new Community Shed. Please email or telephone **01969 624510**.

Finally, don't forget if you need help, support, advice or guidance, or know someone who does, the next informal drop in session of our Staying Healthy, Independent and Connected project is on **Friday the 11th**. These specialist support providers are in the Centre from **10.00am until noon on the second Friday of the month**. The sessions are free, even the tea and coffee and biscuits. Help is offered on things like housing, debt, consumer rights, caring for loved ones. Perhaps you or someone you know feels isolated and would like some advice on how to can join in with activities going on in the local community. The Staying Healthy, Independent and Connected (SHIC) project is funded by North Yorkshire Council. Events can be found on our website, [www.leyburnartscentre.com](http://www.leyburnartscentre.com).

**Music Tuition for all ages with**  
**[www.colinbaileymusic.co.uk](http://www.colinbaileymusic.co.uk)**  
**07711 211169**

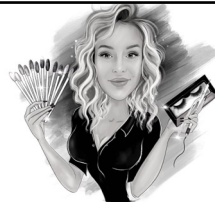
**Drums & Percussion; Vocals;**  
**Piano & Keyboards; Music Theory;**  
**'Get Musical' Workshops.**

## Bear Cottage Interiors

Curtains and Blinds,  
Fabric and Interiors  
Market Place Hawes

**01969 666077**

Email [julie@bearcottageinteriors.co.uk](mailto:julie@bearcottageinteriors.co.uk)  
Website [www.bearcottageinteriors.co.uk](http://www.bearcottageinteriors.co.uk)



*The Parlour*  
HAWES

Nails • Lashes • HD Brows • Aesthetics  
• Microblading • Teeth Whitening

07794331509



Scan the QR code  
to book



**Sycamore**  
**Country Store**

*Now Open Inside Sycamore Hall*

**OPENING HOURS:**

**MONDAY TO FRIDAY. 9.00 am to 1.00 pm**

Selling a wide range of everyday essentials,  
including dairy products, fruit & veg, bread,  
cakes & savouries, sandwiches and sweets

**WENSLEYDALE TREE and**  
**HORTICULTURAL SERVICES (Est. 1995)**

**DAVID ALLEN ( HND Arboriculture)**

**CHARLIE ALLEN ( BSc Arboriculture)**

Fully insured (£5million) professional tree work:  
felling, crown thinning etc.

Petrol log splitter and woodchipper for hire.

Tree stump removal.

Hedge establishment and maintenance.

Supply/ planting of forest/ ornamental trees.

Fruit tree maintenance. Weed control services.

[treesinhawes@gmail.com](mailto:treesinhawes@gmail.com)

**01969 667364 or 07811 576108**



## Penhill Benefice

**Church Services:** In case of bad weather, please check our website at [penhillbenefice.co.uk/services](http://penhillbenefice.co.uk/services) for updates. There will be a Telephone Service each **Sunday** at **9.30am**. Dial **0333 0110 946** and enter room number 61337190# and PIN 7450# (local charges apply).

### Friday, October 4th:

**6.30pm** Harvest Pet Service, Holy Trinity, Wensley.

### Sunday, October 6th:

**9.30am** Holy Communion Harvest Service, St. Margaret's, Preston under Scar.

**11.00am** Holy Communion, St Andrew's, Aysgarth.

**11.00am** Holy Communion Harvest Service, St Bartholomew's, West Witton.

**2.00pm** Harvest Service, St Mary's, Redmire.

**4.00pm** Harvest Service, Thornton Rust Mission Room.

### Sunday, October 13th:

**10.30am** Holy Communion Penhill Together Service, St Bartholomew's, West Witton.

### Sunday, October 20th:

**9.30am** Holy Communion, St Margaret's, Preston under Scar.

**9.30am** Holy Communion, St Mary's, Redmire.

**11.00am** Holy Communion, St Andrew's, Aysgarth.

**11.00am** Morning Prayer, St Bartholomew's, West Witton.

### Sunday, October 27th:

**9.30am** Holy Communion, St. Bartholomew's, West Witton.

**11.00am** Morning Prayer, St Andrew's, Aysgarth.

**3.00pm** Evening Prayer, Thornton Rust Mission Room.

### October Mid-Week Services:

**Thursday, October 10th and 24th at 9.30am.** Holy Communion, at St Bartholomew's, West Witton.

Church Coffee Morning: **Wednesday October 2nd, 10.30am to noon** at Redmire Village Hall.

Church Afternoon Tea: **Wednesday, October 16th, from 2.00pm to 4.00pm** at Redmire Village Hall.

## "Has Wensleydale Got Talent?"

**Saturday, October 12th at 6.30pm**

Holy Trinity Church, Wensley

There is a £50 prize for the winner!

All welcome. Entry £5.

## CHAPEL GALLERY

Work on display from local artists  
and crafters

Coffee and cakes

Dogs and children welcome

Open daily (except Sundays)

**11am to 4pm**

Burtersett Road, Hawes, DL8 3NP

**Tel: 07474 138536**

[info@chapelgalleryhawes.com](mailto:info@chapelgalleryhawes.com)

[www.chapelgalleryhawes.com](http://www.chapelgalleryhawes.com)



Robin Jessop

### Free Market Appraisals

For Selling & Letting Rural Property.

Specialists in Selling by Auction.

Market Valuations for Tax Planning,  
Lending, Compensation and Council Tax  
purposes

Marwood House, Railway Street, Leyburn

Tel: 622800

## Askrigg Snooker Club

Did you know there's a snooker club in Askrigg? Two full size snooker tables in the room above the Village Hall. New members are welcome. Membership is £5 per year, this is for unlimited games.

Interested? Contact *Mike* at Sykes House or WhatsApp **Lawrence** on **07875 194661** for more information or turn up **Monday mornings from 9.00am or Thursday evenings from 7.00pm.**



### Wensleydale Craft Fairs

Quality crafts by local and regional makers

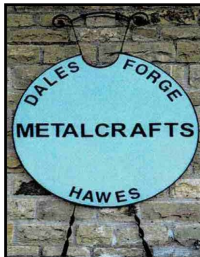
at the Market House, Hawes

**12 - 13 October**

**26 - 27 October**

[www.wensleydales.co.uk](http://www.wensleydales.co.uk)

**Tel: 07857 439450**



## Dales Forge

Metalcrafts

Tel: 07729 105466

Unit 5, Raynes Court

Hawes, North Yorks.

[dalesforge@btinternet.com](mailto:dalesforge@btinternet.com)



**TIMBER BUILDINGS**

Swan Farm, Redmire,  
Leyburn DL8 4HA

**01969 625647**

[castletimberbuildings@mail.com](mailto:castletimberbuildings@mail.com)

[castletimberbuildings.com](http://castletimberbuildings.com)

All of our products are hand made to order, from the smallest of sheds to the more elaborate designed summer houses. Our team of experienced joiners and specialists are on hand to advise and guide you, to help get the most of your product.

We aim to deliver the highest quality buildings, tailor-made to your requirements using only the finest quality timber and ethically sourced. You can be reassured that we also care for the environment.



### Mystery Picture

The gateway in last month's Mystery Picture can be found near the garage at Woodhall. Where would you find this shelter?

### Upper Wensleydale Ladies Luncheon Club

The Luncheon Club meets on the **4th Wednesday in the month** at Street Head Inn at **noon for 12.30pm lunch.**

On **October 23rd** we have a flower demonstration by Rosemary and Twine.

Why not come along and join us, we are a small group and would make you very welcome. Anyone wishing to join please contact **Ray Wilkinson** on **01969 663613**, or **Sue Ryding** on **01969 663551**.

### THE HEALING COLLECTIVE

Encouraging health and well being  
with a range of therapies.

*Therapies for animals also available.*

Coach House, Berry's Farm Shop & Café,  
Swinithwaite, DL8 4UH. t.0845 474 2383

[info@healingcollective.co.uk](mailto:info@healingcollective.co.uk)  
[www.healingcollective.co.uk](http://www.healingcollective.co.uk)



## DENTURE PROBLEMS?



Denture Studio

**Are you unhappy with the look or fit of your existing dentures?**

**WE CAN HELP**

Our in-house Clinical Dental Technician Mark can provide quality bespoke dentures designed to your individual needs



To Book  
**FREE**  
Consultation **CALL**  
**01677 422968**

**Website: [www.orcharddentallab.co.uk](http://www.orcharddentallab.co.uk)**  
**Email: [info@orcharddentallab.co.uk](mailto:info@orcharddentallab.co.uk)**  
**1 The Villas, Bridge Street, Bedale, DL8 2AB**



# Home Run

*Pet sitting, House sitting, Dog walking*

I offer a friendly, personalised pet and house sitting service in Wensleydale and further afield.

Nicola – 07866 336924  
[nicola@homerundogsitting.co.uk](mailto:nicola@homerundogsitting.co.uk)  
[www.homerundogsitting.co.uk](http://www.homerundogsitting.co.uk)



- **City and Guilds qualified**
- **Fully insured** ● **Certificates issued**
- **Prompt professional service**
- **NO MESS - NO FUSS!**

**Martin Tradewell**  
**QUALIFIED CHIMNEY SWEEP**  
**01969 640099**

5, The Row, Horsehouse, Leyburn. DL8 4TT  
Email: [martin@daleschimneysweep.co.uk](mailto:martin@daleschimneysweep.co.uk)



**SWALEDALE  
MOUNTAIN  
RESCUE  
TEAM**



The team is made up of highly trained volunteers available, 24/7 in any weather, any time of the day or night. In an emergency DIAL 999 ask for the POLICE then Mountain Rescue / Cave Rescue / Mine Rescue / Flood Rescue.

Amongst the August calls we had

Incident 39: August 24th; Very early 00:18am call out to assist the Police and Ambulance with the treatment and evacuation of a missing person (located by the Police) in a difficult location.

Incident 40: August 31st: Called to assist the Ambulance Service with the evacuation of an injured mountain biker above Arkengarthdale; treated on scene by the Ambulance Crew and evacuated by the team.

A very special thanks to everyone who supported us at The Muker Show, where we collected a staggering £2,211.

## **Grand Concert in Askrigg Village Hall**

**Friday, October 11th at 7.30pm**

There will be something to please everyone:

Songs from Askrigg Ladies Sing for Pleasure, East Witton Male Voice Choir, including soloists, and items from local young musicians with piano, violin, saxophone and guitar. Eleanor Scarr will delight you with her local dialect items and humorous poems. Refreshments will be available.

We hope you will support us in raising some funds for the Village Hall refurbishment. There are no ticket sales but generous retiring donations will be gratefully received. So come and relax and enjoy this evening of local talent!

## **News from Bainbridge Vets**

We want to give an update about bluetongue virus. BTV3 has been reported in the East Riding of Yorkshire and a surveillance zone has been applied. This virus that affects cattle, sheep, camelids and goats is spread by midges. There is a vaccine that is being released shortly. If you would like to discuss this further please give us a call on **01969 650263**.



The children have settled back well after the summer holidays and we have welcomed some new families. The Sunshines' room has transformed into a farmyard with lots of animals to feed hay to in the role play area and the children have been busy collecting the chicken eggs hidden amongst the hay. We have been singing songs about farm animals, comparing sizes, counting eggs, exploring the pigs in the muddy sensory tray, developing writing skills using carrots and paint and lots more. In the Ducklings' room the children have been busy cooking in the role play kitchen, developing their physical skills using the ride-on toys, rolling and catching balls and using different tools in the sensory tray whilst exploring new textures. We have lots of Halloween themed crafts and games planned for the October half term, if you would like your child booking in please get in touch by emailing [dalesplay1@btconnect.com](mailto:dalesplay1@btconnect.com). We have a full range of packages and prices online. We are also taking bookings now for the January intake of funded children, please get in touch if you would like to come and have a look around the setting and book your child in ready for January.

We would also like to thank Jan, Liz and the team for organising the Bingo fundraiser. The money raised will be put towards our toy storage shed for our ride-on toys. Our next fundraiser will be held in Hawes Market Hall on **Sunday, November 10th from 10.00am to 4.00pm** when we hold our annual Christmas fayre. We hope you will be able to join us to enjoy some delicious homemade refreshments, have a go on our games and start your Christmas shopping.

Visit the ewe-commerce store for ewe-nique merchandise.

Postcards, mugs, magnets, t-shirts and more.

Eunice as ewe've never seen her!

[webpr.co.uk](http://webpr.co.uk)



TOM ADDISON

FINE FURNITURE

Fine quality furniture handcrafted in the heart of Wensleydale.

Free standing and fitted furniture designed & handmade to your requirements.



All enquiries welcome: 07585952951



[tom@tafinefurniture.co.uk](mailto:tom@tafinefurniture.co.uk) [www.tafinefurniture.co.uk](http://www.tafinefurniture.co.uk)



Barn Studio Bookkeeping

Bookkeeping | Tax Returns | VAT Returns  
Company and Sole Trader Accounts

*Friendly service in the Yorkshire Dales*

Terry Newman MICB | 07572 842398  
[barnstudiobookkeeping@gmail.com](mailto:barnstudiobookkeeping@gmail.com)

Bolton House, West Burton, DL8 4JU



**M Fothergill**

**Building Services**

All aspects of building work undertaken **667936 / 07966 624649**

Hawes DL8 3RP

Plastering Alterations Extensions  
Roof work General Maintenance



**Yorkshire Dales Accountancy**  
Chartered Accountants

**taxation & business advisors**

We provide a broad range of accountancy and taxation services to our clients. Please feel free to contact Martin or Hazel.

E-mail:

[info@yorkshiredalesaccountancy.co.uk](mailto:info@yorkshiredalesaccountancy.co.uk)

**Telephone: 01969 678128**

Website:

[www.yorkshiredalesaccountancy.co.uk](http://www.yorkshiredalesaccountancy.co.uk)



## Upper Wensleydale Benefice Services in October

	<b>St Mary and St John's, Hardraw 9.00am</b>	<b>St Margaret's, Hawes 10.30am</b>	<b>St Oswald's, Askrigg 10.30am</b>	<b>St Matthew's, Stalling Busk 2.30pm</b>
<b>October 4th</b>	Communion at Sycamore Hall			
<b>October 6th</b>	The Gathering – St Oswald's Church <b>10.30am</b> Family Communion			
<b>October 13th</b>	Holy Communion	Holy Communion	Café Style	Soup Lunch from <b>12.30pm</b> Harvest and Bread sale
<b>October 20th</b>	Morning Prayer	Family Service	Morning Prayer	
<b>October 27th</b>	Morning Prayer	Holy Communion	Holy Communion	Afternoon Prayer and Pathfinders
Evening Prayer by telephone is held at <b>4.00pm</b> every Sunday for details see website <a href="http://www.upperwensleydalechurch.org/services">www.upperwensleydalechurch.org/services</a>				

### Wensleydale Harvest

I love the annual autumn sales at Hawes Auction Mart. The Vicarage garden backs onto the Mart's carpark and it was wonderful last month to be surrounded once again by the sight and sound of over 22,000 lambs being brought for sale. There is good humour as farmers from the North of England come together in a spirit of support and anticipation as the fruit of a year's hard labour and love comes to a conclusion.

As a church in the upper dale we pray regularly for all those who work the land – for their dedication, skill and resolve and I never cease to marvel at the determination our farmers show in keeping going no matter what the weather (or government) puts in their way.

In a month when Churches and Chapels the length and breadth of the land will be remembering with gratitude the produce of the

land, the lambs and calves are the Wensleydale Harvest.

'A man reaps what he sows', Gal.6:7 wrote St Paul and there is much in the Bible about the rewards of being diligent and conscientious, not only in producing fruit from the land but also in working out our daily lives with one another and with God himself.

At a time where ungracious behaviour and attitudes towards others seems to dominate our news, wouldn't it be lovely if we might all look to a different harvest ... one of gratitude, kindness, consideration, forgiveness and mutual love.

Now that really would be a bumper Harvest!

*Per Dave.*



## Wensleydale Railway News

The Gin Train Experience. We are pleased to announce that we will once again be hosting the Taplin and Mageean Gin Train. Enjoy a full range of their award winning Gin and Tonics from the comfort of a private carriage travelling through the spectacular Yorkshire Dales scenery on our Railway! It will run on **October 26th**. For more details see – <https://wensleydale-railway.co.uk/gintrainexperience/>.

Autumnal Tea Train - **Sunday, October 20th at 2.30pm** - Escape the autumn chill with our afternoon tea served on delicate vintage china with unlimited tea and coffee! Your experience will begin with a glass of prosecco upon arrival and then all you need to do is sit back and enjoy a scenic journey through the Yorkshire Dales whilst being served delicious food at your table in one of our heritage carriages! For more details see – <https://wensleydale-railway.co.uk/autumnal-tea-train/>.

Return To Redmire - The Next Steps. Our new appeal has raised approx. £15,000 so far. This is a fantastic start and many thanks to everyone who has donated. Our goal is to raise £30,000 if possible, so do please support us if you can. This appeal is focussed on a 0.75-mile section of track close to Wensley Station that needs to be slewed away from the embankment edge. The earthworks which carried the railway along the foot of the cliffs below Leyburn Shawl have eroded and material fallen into the adjacent fields. Some sleeper ends have been left exposed and unsupported. This damaged section of track is impeding our progress.

Work is about to commence at Wensley so now is the perfect time to support us. Our goal is to get back to Redmire by 2025, but we can't do this without your support. We need your help to tackle this problem. Read more and donate here: <https://www.justgiving.com/campaign/redmirenextsteps>.

### Portable Appliance Testing (PAT)

**Hawes DL8 3NT**

**Certificates & Reports supplied on each appliance tested.**  
**Please call for free quote and advice**

**Wayne Webster 01969 666020  
or 07766 640905**

### TEASDALE ELECTRICAL

Your local electrician serving the dales and the surrounding areas

Askrigg  
North Yorkshire

**Tel - 07814 184974 (Steve)**

Email - [teasdaleelectrical@icloud.com](mailto:teasdaleelectrical@icloud.com)



**Hall & Birtles**  
**-SOLICITORS-**



**For all your legal requirements offering a full range of services.**

**Hawes DL8 3QL, Tel 667171**

**email: [hawes@hallandbirtles.co.uk](mailto:hawes@hallandbirtles.co.uk)**

**and at Leyburn, Golden Lion Yard, DL8 5AS, Tel 01969 625526.**

**email: [Stuart@hallandbirtles.co.uk](mailto:Stuart@hallandbirtles.co.uk)**

**Regulated and authorised by the Solicitors Regulation Authority**

### HAWES POST OFFICE in the Community Office

**OPENING TIMES:**

**9.00am to 5.00pm Monday to Friday**

**9.00am to noon on Saturday**

**Phone number: 01969 667201**

### BAINBRIDGE POST OFFICE

**Post Office open at Bainbridge in Sycamore Hall 9.00am to 11.00am Mondays and Wednesdays**

### ASKRIGG POST OFFICE

**In Sykes House, Noon to 2.00pm Mondays and Wednesdays**

## Upper Dales Health Watch

The Patient Participation Group for the Central Dales Practice.

Synopsis of the minutes of the meeting held on September 9th.

The HAT charity is now working to raise sufficient funding to continue wi-fi provision for the Step-up Step-down room at Sycamore Hall as the ICB has not been able to fund this.

A supply of ICB leaflets about surgery staff teams are being distributed via Representatives or patient medication.

Denise Houghton's meeting with the ICB Chair had been positive. The main issues to be raised further are Transport in rural areas, Maternity Services and Mental Health. Amy Wardell, a Mental Health Practitioner, is based at Hawes every Monday and can see troubled people. She can mark information as sensitive on a patient's medical record so that only the GPs/ANP can see it. Whatever is recorded is done in the best interests of the patient.

The Men's Health Day at the Hawes Auction Mart has been very successful, and it is hoped this will be an annual event.

The new phone system will offer a callback option after an 8-minute wait. This will allow patients to keep their place in the queue. The Practice would try twice to return the call. This will only work if the number used to phone in on is not being withheld. General enquiries and test result calls will only be accepted after 10.30am.

Patients should find the new website quicker and easier to use. There will be a news section which will replace the proposed Practice Newsletter, and this will include the synopsis of the UDHW draft minutes. This is expected to go live early in October. The web address remains the same [www.centraldalespractice.nhs.uk](http://www.centraldalespractice.nhs.uk).

When patients use E-consultations they are asked each time whether they want a reply by email, text or phone. Patients cannot log an ongoing preference.

Staffing - Miriam Scarr will shortly be back from sick leave and Tara Batty, the Trainee Healthcare Assistant, can now take bloods and blood pressure checks.

The teas in aid of Breast Cancer Now raised £1,065.

Vaccinations. The new RSV (Respiratory Syncytial Virus) vaccination is for everyone who turns 75 on or after 1st September 2024 and anyone who is already 75 – 79 on 1st September. Eligible patients are being invited in and booking is going well.

'Flu – the Practice has enough vaccine for everyone entitled to receive this. Patients will be invited in according to NHS criteria for different patient groups. Last winter about 150 vaccines were sent back and therefore wasted. It is hoped there will be a full take-up this time. Patients are urged not to panic as all eligible patients will be asked to call at their surgery.

Covid – the CDP will only be giving housebound patients autumn boosters, including those at Sycamore Hall. These will start in October.

As from October, a book club will be run in the Hawes Surgery on the **first Tuesday of the month at 6.15pm**. This is only for CDP patients for insurance reasons.

The Practice can't promote services that cost like the Little White Car and specific Keep Fit schemes etc. CDP staff can / do suggest patients contact the Community Office in Hawes.

Catterick Integrated Care Campus Open Days are being held on **Wednesdays, October 30th and November 27th at 1.30pm - 2.30pm**. There is no need to book. For further information contact [claire.firbank@tilburydouglas.co.uk](mailto:claire.firbank@tilburydouglas.co.uk).

The Central Dales Practice is supporting Collective Action as GP practices have received no extra money over the last 10 years. There is currently a 40% loss on several services. The UDHW would be invited to a meeting with the CDP Partners if cuts are going to be made.

**Jane Ritchie, Hon. Secretary**  
**Upper Dales Health Watch**

## Churches Together in Upper Wensleydale

The annual Churches Together Harvest Celebration in The Market House on September 8th was a great success. A big 'thank you' to Rev. Gillian and Scott Lunn for leading the service and to Stan Roocroft and Hawes Silver Band for the magnificent accompaniment. The collection of £189.05 was donated to Christian Aid.





## Yorebridge Sport and Leisure Centre

The Wensleydale Centre,  
Askrigg.  
Tel. 01969 650060

### Softplay

Did you know we have a dedicated softplay room which is available for hire - £5 per family for two hours, or why not try our monthly subscription £15 unlimited use? Would your toddler group like to come and hold a session here? Maybe you are starting to plan your Christmas trip?

We can arrange additional activities in the studio and deliver the session with our trained Early Years staff. Get in touch for social, active play with your babies and pre-school children. Book and pay online. <https://www.yorebridgesportandleisure.co.uk/>.

Gym facility and membership – now available through ClubRight gym management system.

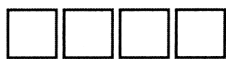
We have a variety of gym memberships including monthly, couples, student, and junior memberships, as well as pay as you go passes. These allow you to use the gym in a way that suits you and have a great workout to meet your needs.

Fitness classes - via zoom or live class as indicated: Booking is essential for all classes. Email [admin@yorebridge-sport.co.uk](mailto:admin@yorebridge-sport.co.uk) or telephone 01969 650060.

Classes are: (£8 pay as you go or class

# PENNINE

# PRINT



Full Colour Print  
Invites - Tickets  
Brochures - Leaflets  
Menus

*all at affordable Prices*

[simon@pennineprint.co.uk](mailto:simon@pennineprint.co.uk)

Tel: 07860 620 411

membership option available).

Fit for Life - **Mondays (zoom) 9.15am - 10.15am.** Building and Maintaining Strength to live life your way.

Warm and Well – **Mondays (live) 11.00am.** Enjoy a social, active class building core strength with a nice cuppa and chat afterwards.

Tennis – **Mondays 6.00pm.** Live social tennis weather permitting. Get in touch to join this group. [yorebridgetennis@gmail.com](mailto:yorebridgetennis@gmail.com).

Walking Circuit – **Wednesdays (live and on zoom) 9.15am - 10.15am.** Exercises to keep active people active.

Strong and Able – **Fridays (live) 11.00am.** Maintain your ability to get out and enjoy life, build muscle tone, stability around movement and keep flexible and mobile around joints. Standing and chair-based exercise.

High Intensity Bootcamp with Kirsten, (live) **Tuesday and Thursday 6.00am -7.00am** – get that morning metabolism boost.

We also offer Conversational French (live) **Tuesdays 9.30am - 10.45am.** Cost is £6 per session.

## WOODCRAFT STUDIO & TIMBER SERVICES

# Christmas Shopping Days

**SATURDAY & SUNDAY**  
**23rd & 24th NOVEMBER**  
**7th & 8th DECEMBER 2024**

**10.30 am - 4.00 pm**

**AT THE WOODCRAFT STUDIO,**  
Raygill House Farm, Hawes. DL8 3PP

**Ample Parking**

Quirky Christmas Trees,  
Hedgehogs, Festive Gifts,  
Woodcraft Stalls for Kitchen, home & garden.

**FREE ENTRY** \*\*\* **REFRESHMENTS**

*All surplus proceeds donated to local causes*  
\*\*\*\*\*

01969 667320

[admin@gaylemill.org.uk](mailto:admin@gaylemill.org.uk) [www.gaylemill.org.uk](http://www.gaylemill.org.uk)  
Charity Reg. No. 1123047 *see over for location map*

# Index to Advertisers

	Page		Page
Accountants, O'Reilly, Hawes	7	Massage, Mobile Therapist	15
Accountancy, Yorkshire Dales	33	Middle House, Askrigg	18
Advertising Rates and Contacts	40	Music Tuition, Colin Bailey	29
Appliance Repairs, Bartlett	17		
Aysgarth Falls Hotel	22	Nails, Lashes etc, The Parlour, Hawes	29
Bear Cottage Interiors	29	Optician - Mike Addison	11
Boiler Service – Efficient Heat	9	Orthopaedic Massage, Reflex	23
Boiler and Aga Service, M.F.W.	17	Ousewem, Flood Prevention	26
Bookkeeping, Barn Studio	33		
Builder and Plasterer, M. Moore and Son	22	Pet and House Sitting, Home Run	32
Builder, Dinsdale John and Ted	17	Physio, Arena	18
Builders, Moore and Blackhurst	5	Plumbing and Heating, Parfitt J	17
Building Contractor, Andrew Hawkins	6	Plumbing & Heating, Upp Wnsllydale	10
Building Services, Fothergill M	33	Portable Appliance Testing	35
Butchers, Cockett, Hawes	26	Post Office,	
Butchers, Hartle, West Burton	7	Hawes, Bainbridge and Askrigg	35
		Print Services, Pennine Print	37
Chapel Gallery	30	Print Services, Wensleydale Press	19
Chimney Sweep, Dales Sweep	32	Property Clearance Solutions	27
Coach Travel and Holidays – Bibby's	13		
Coal Merchant, Peacock	19	Scrap Car and Commercial Collection	13
Cumbria Stove Centre	19	Sewing Needs; Kearton	14
		Solicitor, Hall and Birtles	35
Dales Forge, Metalwork	31	Solicitors, McGarry	10
Dales Garage	12	Slimming World	15
Decorating Supplies. Sanderson & Co	24	Sycamore Country Store	29
Dental Lab, Orchard	32	Sykes House, Askrigg	9
Edgley Garage, Aysgarth	25	Tailoring - Applegarth Couture	13
Electricians - Teasdale	35	Taxi, Peacock, Bainbridge	19
Estate Agent, Jessop Robin	30	Tea Room, Hamilton's, Aysgarth	6
		Tea Room, Mill Race, Aysgarth	26
Fabrics for sale	12	Tea Room, The Moorcock, Garsdale	7
Fish Market, Hawes	14	Timber Buildings, Castle	31
Flooring - NH	15	Travel Specialists – Sturdy Travel	9
Fuel Available, Dale Head Garage	13	TV Aerial & Satellite Services. J.Banks	27
Funeral Directors, Sanderson and Co.	4		
Furniture, Handcrafted, Tom Addison	33	Vets Bainbridge	25
		Vets, Wensleydale	23
Hawes Country Store	25		
H&M Craftsmen, Ingleton	22	WCF Fuels	27
Hairdressing, Edie Peacock	40	Wensleydale Craft Fairs	31
Hairdressing, Twisted	13	Wensleydale Creamery, Hawes	16
Healing Collective, Swinithwaite	31	Wensleydale Tree Services, D. Allen	29
Hearing Tests and Aids	15	Withywood Stores, West Witton	23
Home care, Upper Dales	19		
		Woodcraft Studio & Timber Services	37
Ironing Service–Tracy Hume	39	Woodwork and Decorating. S. Peacock	17
Joiner and Cabinet Maker, Bushby	13	Yorebridge House Hotel	39
Joiner, Solid Joinery Solutions	9	Yore Mill Craft Shop and Gallery	19
		Yorkshire Foot Clinic	22
Logs, Springbank Logs, Hawes	17		
Logs, Seasoned Hardwood	9		

## Bainbridge Women's Institute

September has been another busy month for our members. Our clubs have continued to fill our spare time. The walking group had a good time on their latest adventure in Wharfedale where they walked from Buckden to Cray and Hubberholme. Their next outing is a slightly easier route from Richmond to Easby which will hopefully be accessible to everyone.

The Lunch Club took a trip to Downholme for their last lunch and the Book Club are still reading and discussing. At the end of September, it was decided to mix things up a bit so we headed to the Street Head Inn for an early evening meal to enable some of our working members to join us.

As if we didn't have enough going on, we have now set up a new Theatre Club and their first outing will be a tour of the Georgian Theatre Royal followed by a meal and a production at the theatre. We are really looking forward to it. Meanwhile, we have now started a 'Knit and Natter' session at Sycamore hall in Bainbridge between **10.00am and noon** on the **first Saturday of the month**. You don't have to do both, just come along and join us as the weather deteriorates - refreshments served.

The Garden Club are busy putting their gardens to bed for the winter, but are planning some outings over the next few months to see some other gardens in the area and to do a bit of shopping.

Our September meeting saw Lynn Iveson come along to talk to us about staying healthy and mobile as we age. Lynn is a trained physiotherapist and Advanced Clinical Practitioner focusing on 'old people'. Her presentation was really interesting, and we learned how important it is to have our lives in balance. However, the overriding message was that we need to stay active to ensure good life as we age. It was good to hear that staying active doesn't necessarily mean exercising - thank goodness.

October will see our IT Club on **Friday, October 4th at 2.00pm** at Sycamore Hall where we will be having an expert on smart speakers come along to educate us on how these small items can make a big difference to our everyday lives. Come along and learn more. The 'Knit and Natter' will be at Sycamore Hall on **Saturday, October 5th**. Our monthly meeting

will be on **Thursday, October 17th at 7.30pm** when Andrew Thwaite will be coming to demonstrate his chocolate making skills. This will be an Open Meeting with everyone welcome to join us for the evening.

Also, on **Saturday, October 19th from 10.00am onwards**, we will be holding a Crafting 'Dabble Day' at Sycamore when you can come along and join us to try out a range of Christmas-themed crafting projects. Everyone welcome.

At the end of October, we will be sending some of our members along to the High Dales Group of W.I.'s Quiz Evening at Carperby Village Hall. We hope they have been 'revising' and can bring home a trophy but even if they don't we know they will have a good time, and a delicious supper.

If you would like more information about our busy and friendly W.I. or any of our events and activities, please contact our President, **Nicola Robinson on 650801**. We would be delighted to welcome you to our merry throng and can assure you of a warm welcome, lots of fun and plenty of opportunities.

### The Iron Maiden

*Not enough hours in the day?  
Fed up of never ending ironing?*

My ironing service is definitely a way of buying back much needed quality time in a busy life!

**Tracy Hume**

**07527 796523 or 01969 666048.**

Can arrange collection/delivery

## YOREBRIDGE HOUSE

★★★★★  
Restaurant with Rooms

Bar & Lounges  
open daily

Afternoon Tea & Light Bites  
served daily 12-3pm

A la Carte & Tasting Menu  
served Mon-Sat 6-8pm

Sunday Lunch  
served Sundays 12-4pm

01969 652060  
enquiries@yorebridgehouse.co.uk  
Bainbridge, North Yorkshire, DL8 3EE



## LEYBURN ARTS & COMMUNITY CENTRE

Richmond Road, LEYBURN, DL8 5DL

Bookings & Info: **01969 624510** [leyburnartscentre.com](http://leyburnartscentre.com)

### CINEMA

(£6, or £5 for 60+ / U14. Unless otherwise stated)

<b>TUE 1 OCT</b>	7pm	<b>Rose (12A)</b> 1h 46 (Exploring Film)
<b>FRI 4 OCT</b>	6pm	<b>The Dead Don't Hurt (15)</b> 2h 9
<b>FRI 11 OCT</b>	6pm	<b>Lady Macbeth (2016)</b> (15) 1h 29
<b>FRI 18 OCT</b>	6pm	<b>The Florida Project (2017)</b> (15) 1h 51
<b>TUE 22 OCT</b>	7pm	<b>Ibrahim (N/C 15+)</b> 1h 19 (French Film Festival)
<b>FRI 25 OCT</b>	6pm	<b>Grizzly Man (2005)</b> (15) 1h 43
<b>SUN 3 NOV</b>	2pm	<b>The Phantom of the Opera</b> *£12 (Live Event Cinema)

### OTHER EVENTS & NEWS (\*Half price entry for our volunteers)

**SAT 5 OCT** 7pm **Quiz & Supper** £10

**SAT 26 OCT** 7:30pm **Guy Fawkes' Mother** (Live Theatre) \*£12

Like watching FILMS or THEATRE? Interested in SOCIAL MEDIA? We have volunteer vacancies to help run our DVD-based cinema and our social media posts via the Buffer tool. Please get in touch for more info. Informal training and support available.

*Please book events in advance if possible. Call us Mon-Fri 1-4pm*



## Edie Peacock Hairdressing At the Parlour

**Call: 07817 312906**

### Advertising

**Boxed adverts: £6, £12, £18**  
(dependent on size)

There is a big reduction for six issues or more, so for six issues the totals are:

**£25, £50 or £75**

**Greetings etc. £2**

**What's ons (non-commercial) are free**

**Contact for adverts:**

**Barry Cruickshanks**

**01969 667458**

**[uwnlinput@gmail.com](mailto:uwnlinput@gmail.com)**

*Whilst we try to ensure that all information is correct we cannot be held legally responsible for omissions or inaccuracies in articles, adverts or listings, or for any inconvenience caused. Views expressed in articles are the sole responsibility of the person by-lined. Articles by committee members carry just their initials.*

*We appreciate being asked before any part of the Newsletter is reproduced.*

### Postal Subscriptions

If you would like to receive the Newsletter by post every month the cost is £14 per annum. Please pay by BACS (Account 74237721, sort code 51-61-33) and send your full address details to [uwnlinput@gmail.com](mailto:uwnlinput@gmail.com). Or send a cheque for this amount (made out to the Upper Wensleydale Newsletter) plus your details to Karen Jones, Skellgill Cottage, Skellgill Lane, Askrigg, DL8 3JG.

### Published by

The Upper Wensleydale Newsletter  
Lilac House, The Holme, Hawes, DL8 3QR  
**01969 667458**

Email for submission of articles, what's ons, letters etc.: [uwnlinput@gmail.com](mailto:uwnlinput@gmail.com)

Newsletters on line, simply search on  
"Upper Wensleydale Newsletter"

Archive hard copies back to 1995 are in the Dales Countryside Museum resources room.

**Editors:** Barry Cruickshanks,  
Kevin Davis,

**Committee:** Malcolm Carruthers,  
Tony Hutchinson, Karen Jones (Treasurer),  
Neil Piper, Karen Prudden,

**Founded in 1995**  
**by the late Alan S. Watkinson**