

# THE UPPER WENSLEYDALE NEWSLETTER

Issue 312

September 2024

Donation please:  
50p suggested



*Red Kite*

*Dinah Francis*

Covering Upper Wensleydale from Wensley to Garsdale Head plus Walden  
and Bishopdale,  
Swaledale from Keld to Gunnerside plus Cowgill in Upper Dentdale.

## Guest Editorial

### A Dog's Life

How many of us willingly take a decision that radically alters their way of life, from comfortably predictable to chaotically capricious? Well, many of us do. The decision to change jobs, buy a home, start a family or..... get a dog!

For years we wanted a dog but long hours and working away meant that this simply wasn't practical. We fussed our neighbour's pooch, checked out different breeds on the park walk and sniffled through those animal rescue programmes. Our pre-canine life was spontaneous, adventurous, even restless at times, we were the archetypal DINKIES (an eighty's acronym Dual Income No Kids).

Our lives continued in this way through to retirement, having made a conscious decision to remain footloose and kid free. We were lucky enough to retire early and now had the time and (just enough) money to enjoy life, ready to make the most of this opportunity and do all the things we'd dreamed of – travel the world, fine dining, visit tranquil places at quiet times. But, at this pivotal moment in our lives we suffered a third age crisis, the complete but temporary loss of all rational thought.

We got a puppy. Enter Bob.

Collecting Bob was a dream, driving home with a tiny bundle of white, brown, and black, draped in fleece blanket and clutching wet wipes for the inevitable long trip 'accident'.

Our first puppy disaster struck within minutes of getting home when Bob promptly stuck his head and shoulders through the bars of the puppy crate, bought to create Bob's safe place and keep him contained (or not) at night. An hour, some garden netting, and a few cable ties later we were able to fashion a chew resistant, escape resilient crate. Followed rapidly by another Amazon order for a smaller gauge crate.

It had been a long day; Bob was tired, so were we and bed beckoned. Following puppy best

practice, we'd set Bob up in our bedroom so that we were on hand to ease the settling in process and bond with our puppy. All eminently sensible. But puppies need regular pee breaks so at midnight, 2.00am and 4.00am, Bob being a creature of habit, roused us with increasingly anxious whimpers. This was a particularly wet and cold winter which meant layering up over the PJ's, donning wellies and staggering out into the wild wet garden. Luckily, our sensible neighbours were tucked up in bed, but occasionally we were caught out in our eccentric attire, exhausted and haggard waiting for Bob to perform.

Through the 'Zoomies' - for the dog free amongst you this is as it sounds, madly dashing around at full pelt bursting with suppressed energy - tassel chewing and hiding, Bob moved seamlessly from Terrible Toddler to Teenage Tantrum, dragging two bewildered humans behind him. By this stage we had got through three beds (increasing sizes), several toys (chewed and retired) and most of our cash (vets, food, treats, wine for us....). In an attempt to reign in Bob's enthusiasm for canine chaos we enrolled on the Kennel Club Good Citizen course, successfully passing Bronze, getting the 'good on the day' Silver and attending the 'not a chance' Gold. These are great training courses, but when you arrive to find you have the only terrier amongst a sea of labradors and spaniels you know the odds are stacked against you!

Throughout Bob's life there have been three constant loves, digging, his ball collection and being grumpy. Bob is not a morning dog. What we thought was teenage laziness appears to have dragged into adulthood. As we head for the coffee, Bob grumps and covers his eyes, making it abundantly clear that he is not ready to rise. Make too much noise in the kitchen and Bob grumbles, shakes, and stomps off to his favourite spot under the chair, resisting any attempts at the important morning constitutional.

Grumbling is also Bob's response to many other everyday tasks – come in from the garden, get off the sofa, remove harness, turn on the TV, go to bed. His happy-go-lucky demeanour has earned Bob the nick name Amicable Curmudgeon, although he is something of a turn coat, enthusiastically buttering up to any other humans he meets – so is it just us then?

Bob is obsessively addicted to balls – the smaller and bouncier the better. When one of his



spherical loves is lost, he enters a state of frantic despair, searching the usual hiding spots or staring intently at the spot of last known sighting. Many a happy hour, days even weeks have been spent hunting for a particular ball, despite the purchase of an identical one which simply will not do. And Bob's ball addition is intrinsically linked to his third love, digging.

When researching the breed, we were warned that Fox Terriers were built to dig, and dig they do. Powerful, big front paws make for effective spades and strong, flexible back legs allow for perfect positioning to do maximum damage in the shortest of times. Luckily, Bob sticks to a few favourite dig sites, digging usually being associated with 'accidently' dropping a beloved ball onto freshly tilled soiled or close to a garden wall and then just having to frantically dig it out. The joy of digging is enhanced if the earth is wet, the ball is muddy and by the presence of roots and stones. No day is complete without at least two digs and no amount of treats, threats or pleading has dented Bob's love of the Dig.

Bob is three this year and his stubborn, mischievous, and crafty ways have definitely shaped us. We've learnt patience, compromise, subterfuge. Toy repair skills have blossomed, removing chewed ears, stitching up ripped bodies and re-attaching legs. We're fitter from walking five miles a day, but feel oddly used and abused – ricked back, strained arm, turned ankle and pulled muscles. A walking advert for neoprene sports supports!

Our highly developed tag-team tactics manoeuvre Bob into his bath and we know who's Good Cop and who's Bad Cop, especially when it comes to the weekly groom.

We've come to accept that winter night walks are not much fun, but those special early morning meanders more than make up for things, with sightings of little owls, deer, stoats, and barn owls. It's great to spend time with a character who literally shakes with excitement when we arrive at Fountains Abbey for the 100th time, only calming down when the café comes into view.

**The accuracy, appropriateness or legitimacy of any product or service advertised in this publication is the sole responsibility of the advertiser and not of the Upper Wensleydale Newsletter.**



## Eunice the Ewe

Last month I was hiding in the Castle Timber advert on page 31 and the lucky winner of the £10 prize is Alan Fawcett of Kirkby Stephen.

Where am I this month? To enter for the £10 prize, please include your postal address if replying by email.

Have we achieved our retirement dreams? Travel the world? Not with Bob in tow, but we have stayed in some beautiful, peaceful places, all just two hours drive away and happy to accommodate canine visitors. Dined finely? Not in a Michelin star way, but we have shared some cracking packed lunches with stunning views and one far-gazing dog. Visiting beautiful places at quiet times? We have achieved this dream, although you could argue that one intensely excitable Fox Terrier does dent the tranquillity, just a bit.

**Julia Newiss**

## Submission of articles

Please note that all submissions should comply with current copyright legislation. If submitted articles are not the original work of the person submitting them, then all relevant permission should be sought and granted for reproduction.

## In This Issue

## Page

Guest Editorial	2
Competition	4
Story Writing Competition	5
Newsletter Student Grants	6
Sweet and Sour - Garden News	8
Return to Redmire	9
Hawes Youth Club	10
Penhill Benefice Services	12
Heavens Above	14
Sycamore Hall News	16
What's On	20
Bluebox Update	21
DCM News	22
Upper Wensleydale Benefice Services	24
Mystery Picture	26

## August Competition Answers

$$\begin{aligned}
 (7+7)/(7+7) &= 1 \\
 7/7 + 7/7 &= 2 \\
 (7+7+7)/7 &= 3 \\
 77/7 - 7 &= 4 \\
 7 - (7+7)/7 &= 5 \\
 (7 \times 7 - 7)/7 &= 6 \\
 7 + (7-7)/7 &= 7 \\
 (7 \times 7 + 7)/7 &= 8 \\
 7 + (7+7)/7 &= 9 \\
 (77-7)/7 &= 10 \\
 7/.7 + 7/7 &= 11 \\
 (77+7)/7 &= 12
 \end{aligned}$$

The numbers puzzle proved a real challenge last month. There were only three correct answers to all 12 numbers and the winner was chosen as Jan Shipard from Hawes. Her nominated charity to receive the £50 award is Hawes Youth Club.

**DEADLINE FOR COPY FOR THE  
NEXT ISSUE IS**

**TUESDAY, SEPTEMBER 24th  
PUBLISHED ON OCTOBER 2nd**

## September Competition

The Olympic legacy includes the long-term benefits that the Olympic Games create for the host city, its people, and the Olympic Movement before, during and long after the Olympic Games.

Below are some of the places that have previously hosted a summer or winter Olympic Games. The letters of each place name have been listed in alphabetical order. How many can you identify?

1. AEHNST
2. AEEGLLNOSS
3. AABCELNOR
4. AENPRTW
5. AEEHILLMMR
6. AELMNORT
7. DLNNOO
8. BEELMNORU
9. CCEIIMOTXY
10. ACENORUVV
11. ADEEIIJNOORR
12. EHIKLNS
13. CHKLMOOST
14. AACEIKLLSTTY
15. ACEGGHNNOPY

Please send in your answers to arrive by **Tuesday, September 24th**. Don't forget to include details of your nominated charity which will receive the £50 prize should you win.

### Drop-off points and contacts

For news, articles, reports, letters, What's On dates, competition entries, suggestions and comments:- All 01969 numbers.

<b>Hawes:</b>	Community Office	667400
<b>Bainbridge:</b>	Sylvia Crookes, 3, Bainside	650525
<b>Askrigg:</b>	Sykes Shop,	650535
<b>Carperby:</b>	Anthony Abraham Hall Garth	663243
<b>West Burton:</b>	Nadine Bell, Margarets Cottage	663559
<b>Aysgarth:</b>	Hamilton's Tearoom	663423
<b>Redmire:</b>	Kevin Davis Westholme	624165
<b>Thoraby:</b>	Neil Piper	663747
<b>West Witton</b>	Christine Barker, Chestnut Garth	624934

### SANDERSON & CO. FUNERAL DIRECTORS

A complete and caring funeral service  
provided by an independent  
family business established in 1879.



For personal and  
dignified attention  
in time of need  
please contact

**Richard Sanderson**  
Leyburn Business Park DL8 5QA

**Tel: 01969 623143 (24hrs)**  
**Mobile: 07710 652348**

**Email: sandersonandcoleyburn@gmail.com**

We offer Golden Charter Pre-payment Funeral  
Plans Please ask for further (written) details.





## Entries Now Open for our Children's Story Writing Competition

The Newsletter team invites primary school children to enter a story in our 2024 competition. Your story must be under 500 words long and can be about anything that captures your imagination. The rule this year is that you must start your story with the words **"The noise was louder now"**.

The competition was set up 6 years ago in memory of our late editor Alan Watkinson who always encouraged young people to explore their creative writing skills. Last year we had a wonderful variety of great stories that entertained and impressed our judge.

There are two categories in the competition; those in years 3 and 4 and those in years 5 and 6. There are wonderful prizes to be won and winning stories will appear in the February edition of the newsletter. Local primary schools will be encouraging children to enter and can help with advice and access to computers.

So let your imagination run wild and email your story to [uwnlinput@gmail.com](mailto:uwnlinput@gmail.com) by **Friday, November 8th**.

### Prizes:

The winner in each age group will receive a £50 book voucher and a trophy to keep.

The runners up in each age group will receive a £25 book voucher and all entrants will receive a certificate.

The winning stories will be published in the February edition of the UWNL.

The winning children will be invited to be correspondents for the newsletter for a year.

The winning children's primary school will hold the Alan Watkinson Memorial Shield for 1 year and will also receive a book voucher for encouraging and collating entries.

### How To Enter:

Write your story – it must be type written and between 300 and 500 words long (your school can help with access to computers and email).

Email your entry to [uwnlinput@gmail.com](mailto:uwnlinput@gmail.com).

Ensure your name, year group, and the name of your school is sent in with your entry.

Entries need to reach us by midnight on **Friday, November 8th**.

### Rules:

Your story must be between 300 and 500 words long.

Only one entry per person. The story must be your own original work and you must have your parent/guardian's permission to enter.

Entrants must be in years 3-6 at the time of entering, **attending a local Primary School and resident in the UWNL area**.

The judge's decision is final and no correspondence will be entered into.

The winners and runners-up will be notified by email via their school by **Friday, December 6th**. Prizes will be awarded in local schools in **January 2025**.

The UWNL reserves the right to publish any story entered into the competition.

**Firewood**  
Seasoned hardwood logs  
Tel: 01969 662692  
Mob: 07970 629227

## Solid Joinery Solutions

All aspects of joinery and carpentry undertaken.  
Bespoke joinery solutions made to your requirements.

Covering all Yorkshire Dales and surrounding areas

Contact Paul for a free, no obligation quote on **07980 167987**

Email: [enquiries@solidjoinerysolutions.co.uk](mailto:enquiries@solidjoinerysolutions.co.uk)

Web: [www.solidjoinerysolutions.co.uk](http://www.solidjoinerysolutions.co.uk)

## EFFICIENT HEAT

**OIL BOILERS SERVICED  
AND REPAIRED**

**Contact Nick**

**07729 105466 / 01969 667847**

## Newsletter Higher Education Grant

Once again this Autumn, the Newsletter will be offering a grant of £400 to students living in the Newsletter area (as indicated on the front cover), who are about to commence higher education, following completion of their compulsory education - either the first year of a university course or practical higher education training (eg, HNC, HND, BTEC Level 4 and above, Foundation and Bachelor Degrees). Please note that this grant is only available to those in their **first year of study**.

This grant is not restricted purely to academic studies, but also includes practical courses and learning/instruction in skills which will improve opportunities for employment (such as cookery, hairdressing, beauty etc). In the past, this grant has been used by successful applicants to purchase not only text books but also laptops, sewing machines, cookery knives and beauty kit.

Applicants should apply in writing, or by email, including name, address and contact details. Please give details of the university, college or specialist training facility where studies will take place, together with details of the course/training being followed. If an application is successful, receipts will be required for the purchase of books or equipment and, once these have been received the grant will be made.

Please forward your application to the Newsletter (see address and email details on the back of the Newsletter), to be received before or during the first year of study.



### WOODCRAFT STUDIO and TIMBER SERVICES

formerly Gayle Mill Trust

Gates, posts and fencing to suit all your needs.  
Timber sales of larch and local hardwoods cut  
and delivered for your own project.

Mobile sawmill to cut your own trees into  
planks or beams.

Seasonal firewood delivered throughout the  
Dales

Ring **01969 667320** or **07967 844636**  
for further details

## September Wellness Walk

September's Wellness Walk led by Jo Lade of ReFlex Orthopaedic Massage will be on **Thursday, September 19th** to Crag End Beacon on Great Shunner. Meeting outside the Cart Tea Shop at **10.00am**, we will follow the Pennine Way up to Crag End Beacon at 626m, before dropping in to the beautiful quiet valley of Cotterdale and traverse back to Hardraw. The walk is challenging with some steep sections but we take them at a pace to suit everyone. Expect to be out for around 4 hours.

Booking on to the walk is essential via the Wellness Walks website. The walk is free, however donations are welcome and help us bring more Wellness Walks training and adventures to more communities. Jo is a qualified Mountain Leader and holds Outdoor First Aid as well as Mental Health First Aid certificates so you know you will be in safe hands.

## High Dales W.I.

### Event Cancelled

Unfortunately, due to unforeseen circumstances, we are having to cancel our event planned for **Thursday, October 3rd**.

We apologise for any disappointment but can reassure you that we will aim to re-arrange the cookery demonstration as soon as we are able. Look out for news in due course.

## The Moorcock

### Garsdale Head

Our licensed Tea Room is open daily  
(according to season) from 11.00am to  
5.00pm.

We serve light meals, snacks, tea and  
coffee and a range of beers and spirits.  
Bed and Breakfast facilities are also  
available.

**Tel 07960 930047**

[www.the-moorcock.co.uk](http://www.the-moorcock.co.uk)  
[Email. Themoorcock@outlook.com](mailto:Themoorcock@outlook.com)

## Dales Charity Bingo Report

Our August bingo night was held in Hawes Market Hall on Wednesday, August 7th. We had another good turnout with players joining us from Hawes and surrounding areas, as well as people on holiday, including guests from the Caravan Club and a new first – Rosie (the dog). And although Rosie didn't play, she did support our Bingo caller, mostly when numbers containing a seven came up.

Our Bingo caller for the night was Stephen Reynolds, whom some may remember as our Hawes Postmaster when the Hawes Post Office was situated in Town Foot. This was Stephen's first-time calling bingo and everyone on the night agreed he did a great job.

It was great to welcome some younger players and families on the night, and the excitement when some of our young players won was felt around the hall.

Thank you to everyone who came out and supported our bingo evening. We are very happy to say we raised £330.16 for the Hawes Amateur Operatic Society.

In September we are running two Bingo nights. The first on **Wednesday, September 4th** with profits going to DalesPlay and the second on **Wednesday, September 11th** with profits going to the Hawes Youth Club Group.

Everyone is invited to come along and join in the fun. Please see the posters around Hawes and neighbouring villages for details, or the events postings on local Dales Facebook forums.

If your group would like to receive the profits from a future Bingo night, please call **Jan**, on **07736 017459**.



### *Hamilton's Tea Room At Yoredale House,*

*Aysgarth*

*Licensed Tea Room*

*HOMEMADE FOOD,*

*Light Lunches, Clotted Cream Teas*

*Open Feb-Nov, 10.30am - 4.30pm*

*Closed Mondays and Tuesdays*

*Tel: 01969 663423*

*[info@yoredalehouse.co.uk](mailto:info@yoredalehouse.co.uk)*

## Northern Dales Night Skies

On **Friday, September 20th**, Paul Clark will take us on a nocturnal journey from Mallerstang to Marske under the beautiful skies of the Yorkshire Dales International Dark Sky Reserve. We will visit many well and lesser-known Dales locations through the eyes of this local night scape photographer.

Paul's lifelong interest in astronomy has flourished since moving to the light pollution-free skies of Swaledale nine years ago. His night scape images and videos are widely published in local and national media.

Everyone is welcome to attend this Leyburn and District u3a meeting. Doors open at **10.00am for 10.30am** at Leyburn Arts and Community Centre. Annual membership is £12, or £20 for two people at the same address. For more details please contact **Sue Mellish 01748 850471**, [susiemellish@g.mail.com](mailto:susiemellish@g.mail.com).

### **Gardener urgently needed**

**to restore neglected Bainbridge garden to manageable state.**

**Maintenance help would be appreciated.**

**Liz Burrage, Swiss Cottage,  
The Newkin, Bainbridge**

**Tel.no.01969 650726**

ANDREW  
**HAWKINS** BUILDING  
CONSTRUCTION CONTRACTORS

NEW BUILDS | EXTENSIONS  
BARN CONVERSIONS | ROOFING & GROUNDWORKS  
APPROVED DAMP PROOFING & REMEDIAL  
TREATMENT SPECIALISTS

**Tel: 0800 002 9779**

Email: [hawkinsbuilder@hotmail.com](mailto:hawkinsbuilder@hotmail.com)

Unit 5 Hamby Business Park, Hamby Road, Leyburn, North Yorkshire, DL8 5QA

dales web solutions  
bespoke web site design

**All aspects of Web site design.**

Visit: [www.daleswebsolutions.co.uk](http://www.daleswebsolutions.co.uk)

Email: [info@daleswebsolutions.co.uk](mailto:info@daleswebsolutions.co.uk)

**Tel: 01969 666174 or 07931 822736**

## Sweet and Sour

There are plenty of 'tidy' climbers out there, well behaved specimens which cling tightly to walls, can be neatly tailored to fit around windows and doors and will grow modestly into late summer. Honeysuckle isn't one of them. Don't expect this rebel to cling obediently to a vertical house wall whilst providing masses of scented flowers amidst a wealth of deep green foliage. More likely you'll end up with a top-heavy plant with mildewed leaves and sporadic blooms. Now that's quite a miserable beginning so apologies for the negativity, but so many loniceras are asked to do too much, sited wrongly or planted in poor soil. The last time I was in a garden centre, the honeysuckles were 20 quid a pop, so it's essential to get the planting right: it's far better to have one growing over a low wall or shed, reaching through an arched trellis or clambering all over a skeletal shrub. That way, 20 to 30 feet can easily be reached without the aid of any unsightly wires and mesh.

Any means of support will do: the kids are now all grown up so I ditched the metal grill pond cover a few years back, leaning it up against a north-facing wall. Opting for periclymenum 'Graham Thomas', I planted it close by and am now enjoying a bumper crop of strongly scented white flowers which darken to yellow into late summer. I've also used perfumed 'Americana' to drape over a nearby ramshackle fence. This yellow/purple beauty is a tad ungainly: it's already reaching into an adjacent hedge and is threatening a line of muscular laurels, only one winner there.

Honeysuckles don't mind a bit of shade and like clematis, I've found that they prefer their roots away from the sun's glare. Incorporate lots of well-rotted manure when planting and mulch annually with the same in early spring. Well-nourished roots will mean that the whole plant should escape the twin threat of mildew and leaf loss. I'm like a stuck record going on about tomato feed, but these climbers seem to love the stuff, so I give them a weekly liquid treat in spring, gets those buds fattening up. Prune out a few of the flowered stems after flowering, otherwise leave them to find their random way around your garden.

The Tellmanniana variety is just gorgeous: those bright orange flowers just keep on coming and the bees relish it. However, there's hardly any scent so, to me, Mr. Opinionated, that's like

having a Cornish cream tea without the cream, all a bit pointless. Choose instead either Japonica 'Halliana', white to yellow with yellow veined leaves, or the impressively named Brownii 'Dropmore Scarlet', both robust and with a strong perfume. 'Henryi' will provide later interest with black berries into early winter and the bonus of evergreen foliage. The red and purple flowers are particularly attractive but beware, it's a biggy, so give it plenty of room.

Away from the twiners, what a brilliant sight over the last couple of days, a pair of otters cavorting on the River Bain. Tarka and his mate seemed almost tame and were thrilling to see but please, you two, don't ascend the steep bank to explore my pond: otters love goldfish and grumpy frogs, but not in a friendly way.

Ed Gardener

## Macmillan Charity Coffee Morning

You are invited to join us on

**Saturday, August 31st at 11.00am.**

At Thornton Rust Village Institute.

Come and enjoy coffee and cake.

No need to book, just turn up.

**RICHMONDSHIRECONCERTS**  
**2024 - 2025 SEASON**  
  
September 14th  
HUW WIGGIN, SAXOPHONE, AND OLIVER WASS, HARP  
From Bach to the 21st century via Ravel, Debussy and de Falla  
  
October 5th  
WIHAN QUARTET - Schubert, Beethoven and Smetana  
  
November 9th  
FAIR ORIANA - Two sopranos, lute and viol  
Dowland, Morley, Wilbye, Byrd and new commissions  
  
March 8th  
CARDUCCI QUARTET - Haydn, Shostakovich and Mendelssohn  
  
March 29th  
FIBONACCI QUARTET - Haydn, Judith Weir and Schubert  
  
April 12th  
LUMAS WIND QUINTET - too varied to list!  
  
**ALL 6 CONCERTS FOR ONLY £60**  
**OR £20 EACH**  
Tickets available from rsc.org  
or Castle Hill Bookshop, Richmond.  
  
All concerts are at 7.30 pm at Richmond School DL10 7BQ

## Wensleydale Railway News

### RETURN TO REDMIRE The Next Steps



It has been over 3 years since we last ran passenger trains to Redmire and the part of the railway which has arguably some of the finest scenery and views in the Dales. We would love to reopen the Leyburn to Redmire section of the line but are faced with some major problems. We have made great progress with plans to restore passenger services to Redmire. However, we need your continuing support to achieve this.

Our goal is to restore passenger services to Redmire station by September 2025. This will coincide with the 200th anniversary celebrations of the world's first passenger service on the Stockton and Darlington Railway in 1825. We need your help.

What has been done? - The line from Leyburn to Redmire has been surveyed, all defects noted, and an action plan produced to bring the line back up to passenger standards again. Work started west of Leyburn in 2023, changing sleepers, removing trees and sorting out earthworks and drainage. This section of the line is in a cutting and over the years the earth on the north side has gradually drifted down onto the track. This has all had to be dug out and shored up to prevent recurrence.

The drainage here is also very poor. Approximately 260 metres of concrete U tube drainage channel had to be dug out to remove damaged pipes containing asbestos.

How can you help? - There is a three-quarter-mile section of track close to Wensley Station that needs to be slewed away from the embankment edge. The earthworks which carried the railway along the foot of the cliffs below Leyburn Shawl have eroded and material

fallen into the adjacent fields. Some sleeper ends have been left exposed and unsupported.

This is a big job which will require contractor support. The track section has been surveyed by a Civil Engineer and plans made to slew the track away from the embankment edge onto what was once part of the quarry sidings.

It sounds simple, but it will involve approx. 1,000 tons of ballast (at a cost of around £25,000), the hire of machinery and qualified operators, works trains and our operating staff, permanent way engineers to approve the work, plus hiring a tamping unit (this alone will cost around £10,000) and last but not least, the efforts of our volunteer teams.

There is also a short section of track just east of Wensley crossing which needs attention and that should get us to Wensley. Next, we need to start work on the line to the west, notably Preston Bank as it runs downhill towards Redmire Station. Some of the rail necessary is already on site and we have some other materials, but we will need significant support to complete the job.

This damaged section of track is impeding our progress. We need your help to tackle this problem. Can we count on your support? To find out more and to donate, please see <https://www.justgiving.com/campaign/redmirenextsteps>.

#### Events:

**Summer's End Tea Train – Sunday, September 22nd at 2.30pm.**

**Autumnal Tea Train – Sunday, October 20th at 2.30pm .**

Celebrate the end of Summer or escape the autumn chill with afternoon tea served on delicate vintage china with unlimited tea and coffee! Your experience will begin with a glass of prosecco upon arrival and then all you need to do is sit back and enjoy a scenic journey through the Yorkshire Dales whilst being served delicious food at your table in one of our heritage carriages! For more details see – <https://wensleydale-railway.co.uk/summers-end-tea-train/> or <https://wensleydale-railway.co.uk/autumnal-tea-train/>.

**Polar Express -** Did you miss out on tickets in 2023, or perhaps you're looking to climb back on board in 2024? Tickets are on sale now: <https://yorkshiredalesthepolarexpressride.com>.



## Hawes Youth Club

Hawes Youth Club was founded by the Rev. Don Robinson in 1965 but unfortunately, not much more information can be found regarding this.

In the 1980s, the club was run by Rev. Gordon Gatward who was the methodist minister for Hawes. He had also trained for 2 years as a youth worker. The club was held on a Monday night in the upstairs of the Sunday School in Hawes Chapel.

Gordon used to organise trips such as to Sunderland swimming pool which at the time, had a new state of the art wave machine. Other trips to the ice rink in Sheffield, and also roller-skating at Lancaster were firm favourites. He used to hire and drive a mini bus from Low Mill in Askrigg which he used regularly for various outdoor activities, such as canoeing on Semerwater, abseiling and rock climbing. He remembers he used to take the children into surrounding caves - he had no papers but knew the caves, and there we're no health and safety in those days!

Other activities were rabbit shooting, night time walks on the roman road, sunrise walks to Penhill and Easter cross placing at the roman fort in Bainbridge, as well as chapel sleepovers.

When he left Hawes, Gordon also left photographs and slide shows of various trips and it would be lovely to see if we could find them.

Mike Haygarth says Hawes youth club in the 80s was a game changer for the kids in and around Hawes as there was nothing much to do. He remembers playing British bulldog which was a full-on contact sport adding it's a wonder the ceiling didn't come down. An annual favourite were trips to Ambleside and Helmsley - all very happy childhood memories.

I'm pretty sure lots of people have many memories of these times and it would be nice to hear more stories, if so, please get in touch.

Hawes Youth Club today is held on a **Monday evening from 6.30pm to 8.30pm** above the Market Hall in Hawes. Members are welcome from 10 years to 16 years. The subs are £2.50.

If the weather is fair, we usually go to the community field to play rounders, cricket, tag and have snacks such as hot dogs, popcorn and hot chocolate. If it's not so good, we have use of

the Market Hall where we can play football, table tennis, basketball and tag. If we get good funding we can also do great things similar to last year, with alfresco adventures paddleboarding on Semerwater



For the not so sporty we also have various activities and crafts such as glass painting, jewellery making, painting rocks and decorating tote bags. For foodies we have popcorn making, air frying, baking or cooking biscuits, making milkshakes, hot chocolate, and waffle making.

We also have seasonal crafts coving Halloween, Christmas, Mother's Day and Father's Day.

In our room we have darts, domino's, table top football, pool table, cards, bingo and various quiz games all available for use. We have a well-stocked tuck shop which sells chocolate bars, pick and mix, fruit chews, ice cream and ice pops.



May we take this opportunity to thank the Upper Wensleydale Newsletter for their kind donation of £400 which has been used for further activities and to enhance a thriving environment to help keep this important club going.



It is very important to keep this club of over 50 years going for the next generation of youth, keeping them in a safe place and creating happy memories. We only survive with donations and fundraising events, of which we are asking for your help and support to an upcoming evening of Bingo in the Market Hall Hawes, on **Wednesday, September 11th from 7.30pm**. If you can come along then that's fantastic, if not, could you please donate a raffle prize for us?

You can contact **Joanne Jones** on **01969 650106** or drop off items at the Community Office before **Monday, September 9th**. Please label items 'Hawes Youth Club'.

**Joanne Jones**  
Team leader Hawes Youth club



The children attending Dalesplay have enjoyed watching Hawes Primary School sports day. They joined in with a running race and cheered on their friends taking part in the different races.

The Ducklings' room has transformed into a carnival enjoying the small world circus role play, learning new tricks and dressing up as clowns.

In the Sunshines' room we have been learning about visiting the doctors and dentist. Our role play area has been enjoyed by all, the children took it in turns to be the patient and doctor. They dressed up for their roles and learnt the names of the different pieces of equipment that the doctor and dentist use to check on our health. We have been talking about the foods that are good for our bodies and what we need to do to keep ourselves healthy.

We have Bingo in the Market Hall on **Wednesday, September 4th, 7.00pm for a 7.30pm** start. We hope lots of you can come along and enjoy playing.

We currently have places available for children aged 9 months upwards from September, please get in touch early to prevent disappointment, [www.dalesplay.co.uk](http://www.dalesplay.co.uk). We have paid sessions and the government funded places available for working families and those in receipt of benefits. To find out more if you are eligible for a funded place just visit [www.childcarechoices.gov.uk](http://www.childcarechoices.gov.uk).



## Visitor Centre

**Christmas Menu Coming Soon**

**Look Out for our Afternoon Tea Special  
Menus with a Cheese Twist**

Check website for updates

**1897 Coffee Shop and Dog Friendly  
Garden**

Coffee, cake and light bites with stunning  
views across the Yorkshire Dales

**Yorkshire Wensleydale Cheese  
Experience**

Daily cheesemaking demos & guided  
cheese pairings in our Tasting Room. Peek  
inside the Creamery too

**Cheese and Gift Shop**

Complimentary sampling and fantastic gifts

**[wensleydale.co.uk](http://wensleydale.co.uk)**

## Alex Kravchenko

BSc (Hons) MChS

**Chiropodist / Podiatrist**

Member of the Health Professions Council

**Practising at**

**Yorkshire Foot Clinics**

**25, Frenchgate, Richmond DL10 4NZ  
Bishop Auckland/ Hawes 667449**

**Clinic Tel 01748 850020**

**Email: [yorkshirefootclinics@yahoo.com](mailto:yorkshirefootclinics@yahoo.com)**



**Upper  
Wensleydale**  
**Property Services**

**All aspects of domestic plumbing  
and heating work undertaken  
Bathroom supply and fitting, wet  
room installation and tiling  
Heating systems, and oil boilers  
and tank installations**

**Please contact Malcolm  
Grant on 07855 191466**

**email: [mgwensleydale@gmail.com](mailto:mgwensleydale@gmail.com)**

## Penhill Benefice

**Church Services:** In case of bad weather, please check our website at [penhillbenefice.co.uk/services](http://penhillbenefice.co.uk/services) for updates. There will be a Telephone Service each **Sunday at 9.30am**. Dial **0333 0110 946** and enter room number 61337190# and PIN 7450# (local charges apply).

### Sunday, September 1st:

**9.30am** Holy Communion,  
St. Margaret's, Preston under Scar.

**9.30am** Morning Prayer,  
St. Mary's, Redmire.

**11.00am** Holy Communion,  
St. Andrew's, Aysgarth.

**11.00am** Holy Communion,  
St. Bartholomew's, West Witton.

### Sunday, September 8th:

**10.30am** Holy Communion Penhill Together  
Service, St Margaret's, Preston  
under Scar.

### Sunday, September 15th:

**9.30am** Holy Communion,  
St. Margaret's, Preston under Scar.

**9.30am** Holy Communion,  
St. Mary's, Redmire.

**11.00am** Holy Communion,  
St. Andrew's, Aysgarth.

**11.00am** Morning Prayer,  
St. Bartholomew's, West Witton.

### Sunday, September 22nd:

**9.30am** Holy Communion,  
St. Bartholomew's, West Witton.

**11.00am** Morning prayer Harvest Service,  
St. Andrew's, Aysgarth.

**4.00pm** Evening prayer Harvest Service,  
Thornton Rust Mission Room.

### Sunday, September 29th:

**10.30am** Holy Communion Penhill Together  
Service, St Mary's, Redmire.

### September Mid-Week Services:

**Thursday 12th and 26th at 9.30am.**

Holy Communion, at St. Bartholomew's,  
West Witton.

Benefice Prayer Fellowship: **Tuesday,**  
**September 24th, 7.30pm** at Aysgarth  
Institute.

Church Coffee Morning: **Wednesday,**  
**September 4th, 10.30am to noon** at Redmire  
Village Hall.

Church Afternoon Tea: **Wednesday,**  
**September 18th from 2.00pm to 4.00pm** at  
Redmire Village Hall.

**Hearing loss shouldn't make  
you feel isolated and anxious,  
we are here to help.**



**Hear & Now**  
Independent Hearing & Tinnitus Specialists

### For all your hearing needs!

- Hearing test
- Free hearing aid trials
- Ear wax removal
- Tinnitus assessment and therapies
- Hearing aid repairs and servicing

**CALL 01765 278 744**

8 Queen Street, Ripon, North Yorkshire HG4 1ED  
[info@hearandnowonline.co.uk](mailto:info@hearandnowonline.co.uk)  
[www.hearandnowonline.co.uk](http://www.hearandnowonline.co.uk)

## Dales Garage

Services we provide  
Exhaust, Diagnostics, Brakes, Welding, MOT,  
Suspension, Timing Belts, Clutches, Batteries,  
Tyres, Services. All makes and models.

Unit 2, Hawes Ind Estate, Brunt Acres Road  
Hawes DL8 3UZ



[www.facebook.com/dalesgarage1](http://www.facebook.com/dalesgarage1)

**Call – James 07399 513605**

**Tyler 07376 487776**



**LIBERTY**  
FABRIC

**Quality fabrics for quilting,  
dressmaking, etc., sewing  
accessories, a little wool/yarn .  
Abbotstone House Collection,  
Now at Unit 5 Raynes Ct,  
Hawes, DL8 3UW  
☎ 07921 058803**

## Hawes Indoor Bowling Club

During the Autumn and Winter months the Hawes Indoor Bowling Club meets every **Tuesday at 7.30pm** in the Market House for a friendly game of indoor bowls. New members (male and female) are always welcome.

No previous experience is necessary, so why not come along and have a go. You might have a hidden talent or just enjoy the company and the light exercise. Ring **Barry on 01969 667458** if you have any queries.

## A Grand Concert

To be held in Askrigg Village Hall

**on Friday, October 11th  
at 7.30pm**

Askrigg Ladies Sing For Pleasure

East Witton Male Voice Choir

Local young talent and Soloists

Refreshments

All retiring donations for Askrigg Village Hall  
ongoing refurbishment.

## Applegarth Couture

[www.applegarthcouture.co.uk](http://www.applegarthcouture.co.uk)

Made to measure  
Wedding, evening and daywear,  
tailoring and alterations.

**Contact: Rebecca Atkinson,  
Aysgarth**

**01969 629398 or 07521 030870**



## HAIR, NAILS AND AESTHETICS

Aqua Facial

Micro Needling Facial

Scalp Micropigmentation

IPL Laser Treatment

Thread Vein Removal

Skin Tag Removal

Brow Microblading and Ombre

**Tel Hawes 01969 667449**

[info@twistedah.com](mailto:info@twistedah.com)

Your local family owned Coach Operator



## COACH HOLIDAYS and FULL DAY EXCURSION PROGRAMME

**Call 015242 41330 for our current brochures or visit  
our website to view up and coming Holidays  
and Day Trips**

**Email: [enquiries@bibbys.co.uk](mailto:enquiries@bibbys.co.uk)**

**Website: [www.bibbys.co.uk](http://www.bibbys.co.uk)**

## D BUSHBY

### Joiner/Cabinet Maker

Doors, windows, staircases etc.  
made to measure.

Skirtings, doors, shelves fitted and  
many more odd jobs.

For a prompt and efficient service ring

**David Bushby: 01969 666048 or  
07980 201579**

## DALE HEAD GARAGE

Town Head, Hawes

**Tel.01969 667483**

Fuel Available 24/7

## WANTED - SCRAP CARS AND COMMERCIALS

FREE collection from all areas.

[www.scrapcarmacumbria.co.uk](http://www.scrapcarmacumbria.co.uk).

**07825 293099**

## Heavens Above

There's a good deal more planetary action in the evening sky this month. Shortly after sunset brilliant Venus is on view very low down in the west where it sets around **8.00pm**. You might need binoculars, however, to pick it out in the bright evening twilight.

The ringed planet, Saturn, is at its closest and brightest for the year and visible all night long. You'll find it due south at midnight around the middle of the month in the constellation of Aquarius. Its rings are almost edge-on to us at the moment, unfortunately, so they're not at their best.

Jupiter, the largest planet, is an impressive object in the north-east amongst the stars of Taurus the Bull, rising around **10.30pm**. Really good binoculars should give you a glimpse of its four biggest moons as tiny points of light strung out on either side of Jupiter's noticeably flattened disc.

You'll find Mars, the Red Planet, low in the north-east after midnight. It brightens and becomes more prominent over the course of the month as it gets closer to Earth. The two outermost gas-giant planets, Neptune and Uranus, are also on view this month but they're very faint so you'll need powerful binoculars or a telescope as well as a star chart to help you spot them. During the first half of September

Mercury, the innermost planet, puts on its best morning display of the year, low in the east about an hour before dawn.

Take a look at this month's Harvest Moon on **September 18th**. If you can catch it shortly after sunset you might experience the famous optical illusion which makes the Moon look much bigger when it's close to the horizon than when it's higher in the sky. It should look even larger and brighter this year as it's also a 'Supermoon', the first of three in a row we're treated to in 2024. There's also a partial lunar eclipse in the early morning hours of **September 18th** starting around **3.12am** but only 8% of the lunar surface is obscured by the Earth's shadow so it's not going to be particularly exciting.

This year's Autumn Equinox falls on **September 22nd**. It's the day the Sun heads south again across the Equator, the nights become longer than the days and autumn in the northern hemisphere officially begins. Perish the thought!

We might be in for a bright naked-eye comet next month. If Comet Tsuchinshan-ATLAS doesn't disintegrate when it rounds the Sun late on in September, it should be visible in the early evening sky from around **October 13th** until the end of the month. Some predictions say it could be as bright as Venus and develop a very long tail. Then again like so many other comets it could be a complete flop. We'll just have to wait and see. Have Clear skies!

Al Bireo

### Tuesday Hawes Fish Market

Also door to door delivery every **Friday**. Pre-order or just turn up on a **Friday** at

Askrigg Stone Cross. **9.30am to 10.45am**  
Bainbridge playground. **11.00am to 11.30am**

West Burton **12noon to 12.30pm**

Thornton Rust W.I. Hall **12.45pm to 1.00pm**

Mobile **07711 989590**

Facebook Hawesfishmarket;

Email Hawesfishmarket@gmail.com

### FOR ALL YOUR SEWING NEEDS

Contact. Sheila Kearton at  
Woodhall, Askrigg

Alterations and custom soft furnishings

CURTAINS, ROMAN  
BLINDS, CUSHIONS  
DRESSMAKING AND  
REPAIRS



Tel **01969 663484** or **07800 576925**

# O'REILLY

Chartered  
Accountants

At O'Reilly's we provide a broad range of  
accountancy and taxation services to our clients.

Our friendly and approachable team are  
dedicated to delivering a high standard of  
service throughout the year.

We act for many individuals and businesses  
with different levels of complexities.

For more information visit our website at  
[www.o-reilly.co.uk](http://www.o-reilly.co.uk) or contact us on **01969  
667428** to arrange a free initial consultation.

## Train and Bus News

Saturday through train from Lancashire to Ribbleshead: 'Rail User Express' (Railfuture's free online monthly magazine), reports that "passenger numbers are continuing to build" on the Yorkshire Dales Explorer. This service, which began on June 8th, does two return journeys every Saturday from Rochdale to Ribbleshead. This means that it is possible to have a day out in either direction: to Settle and the Three Peaks area or in Lancashire.

I went to Clitheroe for lunch with friends one August Saturday, taking a gift of Wensleydale cheese for my hosts. Other possible Lancashire destinations on the route include, for example, Langho, Darwen and Manchester Victoria. You can buy tickets from the conductor on the train (fare discounts with Senior Railcards and Dales Railcards); car parking at Ribbleshead station is free. (Check times with care for the rail connections between Ribbleshead - Garsdale and Saturday's Little White Bus service between Garsdale station, Hardraw and Hawes. Note: fare is payable on LWB by all passengers after 6.00pm).

September is Catch The Bus Month (CATM):

This UK-wide event is organised each year by charitable trust Bus Users UK and promoted on their website and elsewhere by supporters who arrange local events. It is an opportunity to publicise our local services, check that up-to-date timetables are displayed at bus stops and - where there are bus shelters - that they are clean, tidy and have some seating. Parish

councillors, please check the bus shelters in your territory! It is also a prompt to check that older friends and neighbours who qualify for a Bus Pass have got one (still free on application with a passport-style photo).

**Sunday, September 22nd** is World Car Free Day!

This annual event is promoted by the United Nations Environment Programme. It offers an opportunity to encourage motorists to give up their cars for the day and discover the possibilities of bus travel in an increasingly climate-aware world. Upper Wensleydale benefits from an amazing number of seasonal Sunday DalesBus services (most until late October). Note the very useful 875 running to and fro on Sundays between Garsdale Station - Hardraw - Hawes - Bainbridge - Askrigg - Carperby - Redmire/ Castle Bolton. See DalesBus route numbers 830, 831, 832, 857, 858, 875 and 876. There is a map of all these routes in the DalesBus booklet, available free from the Community Office and at the museum (both in Hawes) and on [www.dalesbus.org](http://www.dalesbus.org). (Note that sometimes a bus changes its route number when it reaches Hawes or stops for a driver break before continuing its onward journey).

**Ruth Annison**



**nh flooring**

**Carpets • Laminates • Vinyls • LVT  
Solid & Engineered Wood • Accessories**

### For All Of Your Flooring Needs!

NH Flooring in Richmond can fit quality flooring to any Houses, Apartments, Offices, Holiday Lets, Hotels, Pubs, Vans and anywhere else you want it.

**We offer a complete flooring service including:**

Supplying, Fitting, Screeding & Levelling,  
Repairing, Uplift & Removals, Trimming,  
Edge Whipping, Cladding and much more.

**NH Flooring - Richmond**

[www.nhflooring.co.uk](http://www.nhflooring.co.uk) 01748 822834  
Unit 6 Borough Court, Borough Road, Richmond. DL10 4SX

**Slimming**  
-WORLD-

touching hearts, changing lives

Leyburn  
Methodist Hall  
Every  
Wednesday 9am,  
4.30pm & 6pm

No need to book  
Just come along and start your journey to a  
slimmer you.

Call Helen for more info **07969 559998**

## Better Health Massage

Mobile Therapist, 8am to 8pm, 7days  
Improve overall general well being, inside and out.

**Ruth Boddy** MFHT, ITEC Dip. Massage  
[ruth@betterhealthmassage.co.uk](mailto:ruth@betterhealthmassage.co.uk)

Fully qualified and insured

**07773 781803**

[www.betterhealthmassage.co.uk](http://www.betterhealthmassage.co.uk)



## Sycamore Hall News

### Over the Hill

How did that happen? We appear to have arrived in the autumn in the blink of an eye! So far, the summer was nothing to write home about and I am not hopeful of an Indian Summer this month although that would be nice!

We have managed to enjoy some nice days outside but they have sadly been few and far between. Nevertheless, they did prompt an interesting selection of hats!

We enjoyed our Olympics Day where we were able to participate in a range of fun events. Okay, so our days of hurdling and long jump are long gone, but we did put in some impressive performances in the activities that we did do! We are now waiting to hear how our scores compared with those from Kirkwood Hall and Greyfriars - not that we are competitive of course, but we do want to WIN!

We enjoyed a butter-making talk and demonstration by Jane from the Dales Countryside Museum and were impressed at how easy it was to do. We thought we might fill our spare time by making our own butter but don't want to overdo it!

We were delighted to see so many people come along to our Coffee Morning in memory of Val Alderson who we lost suddenly in July. Val had long been an attendee at our weekly coffee mornings and other events and she had also spent many years helping out both at Sycamore Hall and High Hall. We raised £280 which we have put towards a commemorative bench for the garden in the hope that we can sit out in the sunshine and remember good times with Val. Thank you to everyone who supported this event.

August also saw us celebrate Housing 21's 60th birthday with a vintage afternoon tea, attended by residents and invited 'dignitaries'. We enjoyed delicious cake whilst being taken back to the 1960's by Andy who even managed to get us singing along!

Plans are still being made for our autumn events but we hope to have another quiz evening and of course, launch our new community cinema - watch out for details. We are launching a Dominoes Afternoon on **Tuesdays at 2.00pm**, so do come along if you fancy a game! Exciting things are happening in the kitchen as Chris has a new pizza oven and will be offering takeaway pizzas at the weekends once it is all installed and

working - again, watch out for details.

Meanwhile, don't forget our regular events:-

### Weekly Events

<b>Mondays, 2.00pm</b>	Knit and Natter
<b>Tuesdays, 10.30am</b>	Ron's Quiz or Karen's Bingo
<b>Tuesdays, 2.00pm</b>	Dominoes - new event
<b>Thursdays, 10.30am</b>	Coffee Morning
<b>Fridays, 11.00am</b>	Gentle Seated Exercise

### Monthly Events

<b>2nd Monday</b>	Monthly Gents Club
<b>1st Friday, 10.00am</b>	Short Holy Communion service with Revd Dave Clarke

**Last Sunday, 10.45am** Methodist Service

You are very welcome to join us at any of these events.

Our small businesses (Sycamore Restaurant, Sonja's Hair Salon with Mabel and Maisy's Mini Emporium and Sycamore Country Store) are ready to welcome you and offer some wonderful facilities right on our doorstep. The Post Office is also here on **Mondays and Wednesdays** between **9.00am and 11.00am** for your postal and banking needs and the Library is available all day and has internet access. Pay us a visit!

If you have any queries or would like to discuss the availability of apartments, please contact the Manager, **Nicky Cooper**, on **0370-192-4055**.

## STURDY TRAVEL

### INDEPENDENT TRAVEL SPECIALISTS

Now at Toll House (Next to Spar)

Market Place, Hawes DL8 5QX

Also at 1, Golden Yard, Market Place,  
Leyburn, DL8 5AS

For all your travel needs, home and  
abroad

**Call: 01677 422826**

Email: [robert@bakewelltravel.co.uk](mailto:robert@bakewelltravel.co.uk)

Part of Bakewell Travel

ABTA No. P8596





**HUNTON STEAM GATHERING**  
 7th & 8th September 2024  
 VINTAGE, CRAFT & HERITAGE FAIR  
 WENSLEYDALE, NORTH YORKSHIRE, DL8 1QF

- Vintage and Classic Vehicles
- Fair Organs, Steam Gallopers, Vintage Fairground Rides
- Steam Ploughing & Vintage Working Demonstrations
- Craft, Food, Trade & Antiques Stalls
- Falconry Displays & Arena Attractions
- Situated on a 70 acre rural site in Lesser Wensleydale

CARAVAN & CAMPING | BAR & CATERING | FREE PARKING  
 ADULTS: £10 | CHILDREN: £5 (UNDER 5 FREE)  
[WWW.HUNTONSTEAMGATHERING.CO.UK](http://WWW.HUNTONSTEAMGATHERING.CO.UK)

## BARTLETT & ELECTRICALS

| Domestic Appliance Servicing |  
 | Installation |  
 | Electrical Services |  
 | Repairs |  
 | Sales |  
 | All makes and models |

[www.BartlettElectricals.co.uk](http://www.BartlettElectricals.co.uk)

Tel : 07920 401042

Email: Ben@BartlettElectricals.co.uk



Registered  
Heating  
Business



### J.Parfitt Plumbing & Heating Ltd

All aspects of domestic / commercial  
 plumbing and heating work undertaken

Phone: 01969 650665

Mobile: 07882 005261

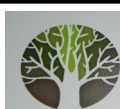
[www.parfittplumbing.co.uk](http://www.parfittplumbing.co.uk)

## S Peacock Woodwork and Decorating

- Fitting of skirting/architrave, doors, shelving
- Wood panelling • Bespoke Furniture
- Painting • Wallpapering

Contact Shaun on: 07794 246392

Email: [shaunpeacock1983@gmail.com](mailto:shaunpeacock1983@gmail.com)



**Springbank  
Logs**

## Seasoned Firewood Logs For Sale

Hardwood and Softwood available.  
 Bulk Bags, Bulk Loads and smaller  
 bags available, also kindling bags.  
 Can deliver locally – Hawes Area

**01969 667916** after 5.00pm

Mobile: **07974 507825**

any time; P.O.A

## JOHN & TED DINSDALE

Builders ~ Roofers ~ Renovations ~ Extensions

*All aspects of property maintenance.  
 Fireplaces, Wood Burners supplied and fitted*

01969 667 718 ~ 07511 424 865

## MFW Aga & Boiler Services

Specialising in the servicing of Aga / Rayburn  
 cookers and domestic oil boilers.

All Dales area covered

For service please contact Mike on:

Phone: 01609 779751 Mobile: 07731 349276

## Wath Morris Bainbridge Weekend

**September 6th - 8th**

On the weekend of **September 6th to 8th**, Wath Morris will be once again touring upper Wensleydale and performing English Morris Dances, Yorkshire sword dancing and singing local and regional folk songs. This year we are also (for our first time in the area), performing our St. George, mummers play; traditionally performed in the winter months and variants of which were performed in most towns and villages until the early 1900's. Our play comes from a tiny hamlet adjacent to Wath.

Wath Morris, based in South Yorkshire, have toured extensively over the years, including all quarters of the British Isles and in the near continent, but keep coming back to one of their first loves, Wensleydale, which they first visited almost 50 years ago. Originally the weekend was based in Thoralbby, then moved to Aysgarth and for the last 8 years has been based in Bainbridge. All the performances are free to attend and a rare opportunity to see these English traditional dances and plays performed in the beautiful villages of the Yorkshire Dales.

Last year the team invited anyone local or visiting the area, to join them in their Saturday evening folk song and music session. This was such a success that we are again asking anyone interested in folk music or song, or who just want an entertaining night out, to join us on **Saturday, September 7th** in Bainbridge Temperance Hall (village hall). Musicians and

singers are welcome to perform, and the evening is free and runs from **8.00pm to 11.00pm** – Bring your own refreshments.

The dance itinerary for the weekend is:

### **Saturday, September 7th:**

- 10.00am** Dancing and Mumming at Aysgarth Falls Hotel, Aysgarth.
- 11.15am** Dancing and Mumming at The Village Pub, Redmire.
- 12.30pm** Dancing at The Wheatsheaf, Carperby.
- 2.30pm** Dancing and Mumming at Wensleydale Creamery.
- 3.45pm** Dancing and Mumming at The Board Inn, Hawes.
- 8.00pm – 11.00pm** Bainbridge Village Hall (Temperance Hall), Informal music and songs – open invitation.

### **Sunday, September 8th:**

- 10.30am** Dancing and Mumming at Sycamore Hall, Bainbridge.
- 11.45am** Dancing and Mumming at The Fox, West Witton.
- 1.00pm** Dancing and Mumming at The Fox and Hounds, West Burton.
- 2.00pm** Weekend's End.

If you want any further information, please contact Wath Morris at: [wathmorris@aol.com](mailto:wathmorris@aol.com) or visit our website: [www.wath-morris.co.uk](http://www.wath-morris.co.uk) or call **Tim Binns** (Bagman) on **07884 433324**.

## **Arena Physio and sports rehab.**

**physiotherapy & sports rehabilitation clinic**

**Assessment, treatment and rehabilitation of  
musculoskeletal pain, injury and dysfunction.**

### **Appointments available at:**

Carperby Football Club, Carperby,  
Leyburn, North Yorkshire. DL8 4DJ.

or

Darlington Mowden Park RFC  
Darlington Arena, Neasham Road,  
Darlington. DL2 1DL

**Tel: 01325 728092 Mob: 07799767075**

**[www.arenaphysio.co.uk](http://www.arenaphysio.co.uk)**



Village Pub, Restaurant and Hotel

Located in Askrigg, in the heart of Wensleydale

**12 Comfortable En-Suite Bedrooms**

*Double & Twin Rooms*

**Pub & Restaurant**

*Great Food and Drinks*

**Private Car Park**

**Beer Garden**

Main Street | Askrigg | DL8 3HG

01969 650515 | [info@middlehouseaskrigg.co.uk](mailto:info@middlehouseaskrigg.co.uk)

[www.middlehouseaskrigg.co.uk](http://www.middlehouseaskrigg.co.uk)

## Friends of the Dales Countryside Museum (FDCM)

We're seeking enthusiastic members from our amazing group of Friends to step up and join our FDCM Committee.

If you've got a passion for all things Dales Countryside Museum and are ready to contribute your ideas and energy, we'd love to have you on the team.

No special skills required, although computer knowledge would be handy - just a commitment to making a difference! Our meetings are held quarterly and tend to last about an hour.

Please contact us on **01969 666210** if you would like to know more about it, or attend our open AGM meeting at the Museum on **Friday, September 20th at 7.30pm.**

Your voice and perspective are exactly what we need!



### James Peacock SOLID FUEL MERCHANT Bainbridge

Good quality fuels at competitive prices.  
Smokeless Fuel, Logs and Sticks all available.

Deliveries in Wensleydale, Swaledale and Coverdale. No delivery too small.

### James Peacock PRIVATE HIRE Bainbridge

4-8 seats, Airport runs, pubs, stations, walking or cycling holiday, luggage transfers.....

**Tel: 01969 650212 / 650465**

Email: [info@james-peacock.co.uk](mailto:info@james-peacock.co.uk)

Web: [www.james-peacock.co.uk](http://www.james-peacock.co.uk)

## COPY SHOP PRINTING ~ PAPER SCANNING & LAMINATING

*Wensleydale Press*

Burtersett Road, Hawes 01969 667575

[wpress@tiscali.co.uk](mailto:wpress@tiscali.co.uk)

## UPPER DALES HOME CARE



Home care services are specifically designed to provide assistance with daily living activities in the comfort of an individual's home.



### OUR SERVICES



Help at Home includes:  
Cleaning  
Laundry  
Light Chores  
Meal Prep



Company & Support:  
Companionship either in person or by phone



Carers' Break Sitting Services:  
Support for those caring for loved ones



**CONTACT US**  
01969 667400  
or 07817 711227



**VISIT OUR WEBSITE**  
[www.udcp.co.uk](http://www.udcp.co.uk)



**Yore Mill**  
CRAFT SHOP & GALLERY

We have a wide selection of artists and makers from Yorkshire and across the North of England overlooking the beautiful Aysgarth Falls.

Check our website for further details and opening hours.

**Yore Mill, Aysgarth DL8 3SR**

Web: [yoremillcraftshopandgallery.co.uk](http://yoremillcraftshopandgallery.co.uk)  
01969-662829

## Cumbria Stove Centre

Supply and installation of wood, coal and gas stoves.

- ◆ Flue and chimney lining services.
- ◆ Inglenook specialists.
- ◆ Fully qualified and experienced Hetas engineers

**01539 821061 (day) - 01539 625227 (eve)**  
**SHOWROOM: 34a, Main Street, Staveley**

**SEPTEMBER WHATS ON LISTING;**  
*please add these dates to your Diary*

**August**

- 31 Charity Coffee morning. Thornton Rust.  
 11.00am. See p.8.

**September**

- 1 Moorcock Show. 10.30am. See p.25.  
 4 Bingo. Hawes Market Hall. 7.00pm. See p.7.  
 6-8 Wath Morris Weekend. See p.18.  
 6 Dominoes 7.30pm. Carperby Institute.  
 7 Reeth Memorial Hall Concert. 8.00pm. See p.30.  
 7 Wensleydale Concert. 7.30pm. St Andrew's Aysgarth. See p.35.  
 8 Harvest Celebration. 6.30pm. Hawes Market Hall. See p.28.  
 11 Bingo. Hawes Market Hall. 7.00pm. See p.7.  
 14 Richmondshire Concert. 7.30pm. Richmond School. See p.8.  
 14 Musical Evening. 6.30pm. Hardraw Church. See p.32.  
 18 Local History Group Talk. Harmby Village Hall. 2.00pm. See p.31.  
 18 Penhill Ladies Meeting. 7.30pm. Carperby Village Institute. See p.26.  
 19 Wellness Walk. 10.00am. See p.6.  
 19 Bainbridge WI Meeting. 7.30pm. Bainbridge Village Hall. See p. 27.  
 20 u3a Meeting. LA&CC. 10.00am. See p.7.  
 20 Friends of DCM AGM. 7.30pm. Dales Countryside Museum. See p.19.  
 21 Reeth Memorial Hall Concert. 8.00pm. See p.30.  
 21 Wensleydale Concert. 7.30pm. St Andrew's Aysgarth. See p.35.  
 27 Harvest Supper. 7.30pm. Stalling Busk Schoolroom.  
 28 Concert. 3.00pm. St Andrew's, Aysgarth. See p.33.

**Howard's Send Off**

On **September 21st**, Maureen and family will be spreading Howard's ashes down by the river, where he walked with his beloved dog Max. Anyone who wishes is invited to tea and cake (a nod to Howards sweet tooth of late) on the afternoon from **3.00pm**, at Burn House. Please do join us.

**Free Cycling Events**

**Free Bike Repairs:**

Part of the Cycling UK Big Bike Revival Summer Programme. We are able to offer 10 FREE Bike Checks and Minor repair. If you are keen to get back out on your bike and be ready for summer this is a great way to make sure it's road worthy. The appointment will include a check, tune and minor repairs such as puncture repair, gear or brake cable replacement, brake pad replacement. It is not a full service. You will be advised of any repairs required outside the remit of this offer and you can decide if you would like the extra work undertaken. Both adult and children's bikes are eligible for this service. Please note we cannot work on bikes modified to E-bikes. Repairs will take place at our workshop in Hawes. (If you are having difficulties accessing this location please get in touch) **Helen Pollard** on **01969 666873**.

**Learn to Ride sessions:**

Funded by Cycling UK Big Bike Revival, these 1:1 coaching sessions are free to access. Each session is an hour long led by a qualified and experienced instructor. They are open to any age of cyclist but are aimed at supporting new riders and those that require support returning to cycling. So, if you are a parent struggling to get your child to balance or need help to get back on your bike to catch up with the kids, these sessions are perfect. Bikes and helmets are available to loan as part of the coaching. All sessions will take place in Hawes. When you book we will contact you to book a mutually suitable time and date. Equipment is available to loan. If you need further information, please contact **Helen Pollard**, **01969 666873**.

Please book online at <https://www.stage1cycles.co.uk/collections/whats-on>.



**Music From the Movies 2**

**KEEP THIS DATE FREE !!**

**Saturday, October 26th at  
 2.30pm** at

St Margaret's Church, Hawes.

Mal Carruthers (Organ) together with guest vocalists, returns with  
 'Music From the Movies 2'.

More details to follow in October's issue.



## Blueboxt - September Update

It's been a jam-packed summer. From sorting our stores, painting scenery, to performing music and entertaining for all ages to enjoy. A huge thank you to our volunteers and everyone who has attended our activities and events.

### Autumn Activities:

#### Weekly Groups and Workshops:

Light My Choir! – Our mixed voice community choir meets on **Monday evenings** from **7.00pm - 8.30pm** at Leyburn Methodist Church Hall. Members of the group attend from across the area and are happy to provide car sharing. All welcome – why not come along and give it a go?

Play, Record, Perform – **Sunday afternoons** from **2.00pm – 5.00pm** at Thoraby Village Hall. A great opportunity for young people 11 to 19 years old to play in a band. There are also opportunities to record and perform.

Young People's Workshop – Leyburn Jazz Festival:

A fantastic opportunity for musicians and singers aged 11-19 to be creative and work with saxophonist Helena Summerfield. Sessions are **Sunday, October 6th and 13th, 2.00pm – 5.00pm** and **Saturday, October 19th, 10.30am - 12.30pm**.

Don't forget to pick up your copy of the Jazz Festival programme available from community information points. Full details and booking at [leyburnjazz.org](http://leyburnjazz.org).

Wensleydale Young Musician of the Year (November):

Registration is now open to young people aged from 7 to 18 years old. The competition hosted by The Wensleydale Rotary Club and BlueBoxt will be held at St. Matthew's Church, Leyburn on **Sunday, November 24th from 2.00pm**. There are classes for soloists, ensembles and groups featuring acoustic and electric instruments including voice. Full details at [www.wensleydale.org](http://www.wensleydale.org).

#### Halloween Activity Afternoon

Join us for a spooky afternoon of creative fun at Thornborough Hall, Leyburn on **Tuesday, October 29th from 1.00pm – 4.00pm**.

Activities include Halloween Bingo, Pumpkin carving and bowling, apple bobbing and a slime tank! Places cost £15 per person which includes healthy snacks and a pumpkin and T-Light to take home. Book now at [www.wensleydale.org](http://www.wensleydale.org) or phone **01969 745810**.

#### Fundraising:

What an amazing afternoon with Leyburn Jazz Collective. Over 100 people attended our Strawberry Teas and raised a whopping £900 to support the Charity's work.

We have two events in September. A Coffee morning and cake stall on **Friday, September 13th** at Leyburn Methodist Church Hall and a Murder Mystery Evening on **Saturday, September 21st** at Thoraby Village Hall.

October is busy too with our annual Quiz Night with Simon Eastwood take place on **Friday, October 4th** at The Falls Café and Gift Shop, Aysgarth. Jennifer completes her Run for Charity on **Sunday, October 20th** and our Grand Prize Draw takes place on **Tuesday, October 29th** (see website).

You can call or text our box office and enquiry line on **01969 745810** | email [info@blueboxt.org](mailto:info@blueboxt.org) | [www.wensleydale.org](http://www.wensleydale.org) | [www.leyburnjazz.org](http://www.leyburnjazz.org) | [www.blueboxt.org](http://www.blueboxt.org).

#### BlueBoxt Productions Presents -

Santa's Spectacular – A magical adventure for all ages is coming to Leyburn Methodist Church Hall this December! Booking is now open for this brand-new family production featuring Tinsel McDolly, Mother Christmas and a very special guest. Performance days include **Saturdays, December 7th, 14th, 21st, Sunday, December 22nd, Monday, December 23rd and Christmas Eve**. Full details at [www.wensleydale.org](http://www.wensleydale.org).

Mystic Motion Dance Collective – open audition call:

We have a special family show in production for February 2025 and are inviting dancers to audition to be part of the Mystic Motion Dance Collective. (As a guide – you should be a minimum age of 10 years by December 31st 2024. There is no upper age limit.) Simply send us a video telling us your name, contact details, your interests and a short performance of the different dance styles which inspire you to [www.blueboxt.wetransfer.com](http://www.blueboxt.wetransfer.com) or email to [info@blueboxt.org](mailto:info@blueboxt.org).





## News from Dales Countryside Museum

Opening times: Daily  
**10.00am to 5.00pm** February  
to October, **10.00am to 4.00pm** November and

December. Closed **Christmas Eve to Boxing Day and January 6th to 31st**. Last entry one hour before closing.

Contact: [hawes@yorkshiredales.org.uk](mailto:hawes@yorkshiredales.org.uk) or call **01969 666210**.

**Labour of Love Exhibition** – running until **September 8th**.

Visitors have found this to be a fascinating exploration of land, lives and nature in England's Upland Commons. As part of the nationwide Our Upland Commons project led by the Foundation for Common Land, Rob and Harriet Fraser spent time meeting people who are passionately committed to a positive future for these special places: farmers, landowners, conservationists, heritage specialists, ecologists, scientists and others. The exhibition offers a glimpse into the online collection of 'Commons Stories' with insights into farming, wildlife and conservation. It closes on **September 8th**, so don't miss your chance to see it.

Our next exhibition opens on **Friday, September 13th** and we have a meet the artist event between **3.00pm - 5.00pm**. Penny Hunt will be here to share her work and chat to visitors.

**Storyland: Pathways Through Time - September 13th to January 5th 2025**

Artist Penny Hunt became increasingly fascinated with the stories of the drovers, men who were trusted to take a whole village's cattle from the wilds of northern Scotland on a long trek along the drove routes, to the fattening grounds of Norfolk, before being sold in London markets. This exhibition explores how time has changed the landscapes they knew, how the historical remnants make us feel connected with those who went before.



*Pink Twine and Old Tracks*

Landscapes are shown through the colours of the plaid the men wore, little clues to the treasures they carried and items from modern life found along the ancient tracks. There will be associated events, so take a look at our website.

### **Yorkshire Dales Young Archaeologists' Club:**

The club meets once a month on a Saturday morning, **10.00am – noon**. Young people age 8 – 17 years are welcome to come along for a free trial session, but as our next meeting on **September 14th** is off site in Wharfedale, please get in touch about our **October 12th** meeting. Please call **01969 666210** or email [dcm@yorkshiredales.org.uk](mailto:dcm@yorkshiredales.org.uk).

**Research room visit:** It was lovely to welcome John Elphinstone, Sylvia Caygill, Audrey Thornborough and Mary Atkinson to meet Macfie trustees in our research room this month. Mary lived on a farm next to Macfie in Lunds and shared memories of her time there. John kindly brought Macfie's bible to add to the Macfie Calvert archive. You can find out more about our research room on our website [www.dalescountrysidemuseum.org.uk/visit-us/research-facilities/](http://www.dalescountrysidemuseum.org.uk/visit-us/research-facilities/).



**Family welcome corner:** Families have been loving our new family friendly welcome corner and hunting for Cyril the squirrel, our family mascot who signposts them to lots of fun activities and features on our Scurry Club passes. If you'd like your child to be able to visit all year round, why not think about a Scurry Club Pass? Your child and an accompanying adult carer can visit all year round and kids can start collecting their squirrel badge and first stamp as soon as they visit.



**RNIB Access audit:** We welcomed Sidney (Community Connection Coordinator - North Yorkshire and South North East), Jay and Lea to the museum to carry out an audit of our site. Sidney said the museum is fantastic, incredibly tactile and hands on and he really enjoyed his visit. He also had some great suggestions for things we can introduce and we'll be getting on with that very soon. This will build on the Changing Places installation and we hope it will be another step forward towards making the Museum as accessible as we can for all our visitors.

**Education and community engagement:** Our loan boxes are getting booked out quickly for the next school year, so if you'd like your class to be able to explore real objects in the classroom, or to take part in one of our free learning sessions either here at the museum or in school, do get in touch.

If you're involved with a Youth group and you think your young people would be interested in getting involved in a project with the Museum, please get in touch. We're keen to link up with groups to explore themes around Green Spaces – Shared places through a project supported by Art Fund. If you're passionate about the countryside and the Yorkshire Dales and would like your voice to be heard, we'd love to hear from you.

We welcomed two students on week long placements to the museum, one 2nd year degree student from Newcastle University and one year 10 student from Wensleydale School. Both students worked hard and made great contributions over the week they were with us.

**Volunteers:** Our fabulous team have been busy helping with conservation work, environmental monitoring, cataloguing, scanning collections, carrying out visitor surveys and keeping our trail looking great. If you'd like to get involved, do get in touch via [dcn@yorkshiredales.org.uk](mailto:dcn@yorkshiredales.org.uk).

There is also an opportunity to join the committee of the Friends of the Dales Countryside Museum - see page 19.

Here are the DCM events coming up in September and early October:

**Sedbergh, Hardraw, and the Kitchener camp rescue in World War II:**

**Tuesday, September 17th, 2.00pm - 3.00pm.**

During the Second World War, a company of

German-speaking soldiers were billeted in Sedbergh and Hardraw. These men weren't Prisoners of War, but British Army troops.

So, what was their history? And how did they come to be in Sedbergh? Join us for a chat and a slideshow with Dr Clare Weissenberg. Clare's father, Werner Weissenberg, arrived on the Kitchener camp rescue from Germany to Britain in June 1939. Later, Werner found a warm welcome and good friends in Sedbergh and Hardraw while serving in the British army, and Clare is working to find out more about this fascinating – yet largely forgotten – piece of wartime history.

**FDCM Lecture and AGM:**

**Friday, September 20th, 7.30pm – 9.00pm.**

FDCM AGM and guided tour of Storyland - Pathways through time, with artist Penny Hunt. Penny became increasingly fascinated with the stories of the drovers, men who were trusted to take a whole village's cattle from the wilds of northern Scotland on a long trek along the drove routes, to the fattening grounds of Norfolk, before being sold in London markets. Landscapes reflect the colours of the plaid the men wore, little clues to the treasures they carried and items from modern life found along the ancient tracks.

**A Taste in Time:**

**Sunday, October 13th, 10.00am – 4.00pm.**

Enjoy our Taste in Time Experience! You'll explore our Victorian kitchen and collection, make your own chutney to take home and enjoy a delicious lunch. In the afternoon, have a go at making your own oatcake and butter for a cheese tasting session. £50 - lunch included - booking essential.

**FDCM lecture: "One on two, two on one"**

**Friday, October 18th, 7.30pm – 9.00pm.**

Tony Keates explains the history and construction of dry stone walls.

## **Bear Cottage Interiors**

Curtains and Blinds,  
Fabric and Interiors

Market Place Hawes

**01969 666077**

Email [julie@bearcottageinteriors.co.uk](mailto:julie@bearcottageinteriors.co.uk)

Website [www.bearcottageinteriors.co.uk](http://www.bearcottageinteriors.co.uk)



## Upper Wensleydale Benefice Services in September

	St Mary & St John's, Hardraw 9.00am	St Margaret's, Hawes 10.30am	St Oswald's, Askrigg 10.30am	St Matthew's, Stalling Busk 2.30pm
<b>September 1st</b>	The Gathering – St Oswald's Church <b>10.30am</b> Family Communion			
<b>September 6th</b>	Communion at Sycamore Hall			
<b>September 8th</b>	Morning Prayer	Holy Communion	Café Style	Soup Lunch from <b>12.30pm</b> followed by Afternoon Prayer
<b>September 15th</b>	Holy Communion	Family Service	Morning Prayer	
<b>September 22nd</b>	Morning Prayer	Holy Communion	Holy Communion	Afternoon Prayer and Pathfinders
<b>September 29th</b>	Harvest Service <b>3.00pm</b>	Morning Prayer	Harvest Service	
Evening Prayer by telephone is held at <b>4.00pm</b> every Sunday for details see website <a href="http://www.upperwensleydalechurch.org/services">www.upperwensleydalechurch.org/services</a>				

### What's in your Cup?

*"A sense of fairness is embedded deep in the English soul"* - James Kirkup.

I'm sure that I was not alone when I say that I was heartened to see the large crowds of 'anti-riot protestors' that took to the streets in our nation's cities to stand against the message of hate and violence being screamed at the weak and vulnerable. 'Love will overcome hate!' was one message daubed on a boarded up shop window. It's a Biblical promise.

It reminded me of the reply to the question "Why did you spill your Coffee?" "Because someone bumped into me" – No. I spilled coffee because coffee was in my cup. If there had been tea in my cup then tea would have been spilled. Whatever is in our cup is what will be spilled

when life shakes us up a bit. It got me wondering: what's in *my* cup?

King David, the writer of the much loved psalm 23 observed after a lifetime of seeking to follow God's love and guidance that '*my cup overflows*'.<sup>Ps23:5</sup> God's invitation to us all is that we might look to Him to fill our cup of life with good things: Love not hate, peace not rage, empathy not hostility. Now, there's a transforming message to take to the streets. Life gives us the cup but we all have the freedom to decide what we shall fill it with.

Jesus said: "*I have come that you might have life and life to the full*".<sup>Jn10:10</sup>

*Peri Dave.*

## Moorcock Show 2024

This year's show will take place on **Sunday, September 1st from 10.30am**, at the show ground at Mossdale Farm, Thwaite Bridge which is on the Hawes/Sedbergh Road. Just follow the signs and you will get there. Last year's show saw a record number through the gates and with so much on offer for one of the oldest traditional sheep shows, it really is more than just sheep.

This year, we will see the return of Action Ants, fun for all the family with their archery and obstacle courses which will be free for all to enjoy. There will be a showcase from

Woolkeepers, who work with farmers, giving them a fair price for their wool and using it in a sustainable way including projects on local moorland.

The craft tent provides an array of handmade goods, gifts and local produce and see the results of the handwriting competition for the young children of the Dale. Enjoy a local ice cream whilst listening to the Hawes Silver Band, jump on the Hawes Fire Brigade engine, put your knowledge to the test and take part in the public judging of our chosen sheep or enjoy a drink or two in the beer tent.

Whatever your plans for the day, arriving by car, or by train and jumping on the 'Garsdale Station Shuttle Service', we look forward to welcoming you to the Moorcock Show.

For more information please visit: [www.moorcockshow.co.uk](http://www.moorcockshow.co.uk) or email: [enquiries@moorcockshow.co.uk](mailto:enquiries@moorcockshow.co.uk). Entry: Adult £8.00, Child Free, Parking Free.

### SANDERSON & CO.

**"Decorating Supplies"**

**DULUX COLOUR  
ADVICE CENTRE**  
Scanner Colour  
Matching & Paint Mixing



Stockist of Leading Brands including,  
*Dulux, Crown, Leyland,  
Ronseal, Cuprinol*

Extensive Wallpaper Pattern Library  
Trade & Quantity Discounts Available

**High Street, Leyburn DL8 5AQ**  
**01969 623143**  
Email: [sandersonandcoleyburn@gmail.com](mailto:sandersonandcoleyburn@gmail.com)

**Also CALOR & Camping Gaz stockist**  
Mobile heaters and accessories  
Free local delivery



## Bainbridge Vets Ltd

**A comprehensive, friendly veterinary  
service treating animals large and small  
24 hour emergency service.**

**Open Surgery**  
Monday-Friday 9.00-9.30am and 2.00- 2.30pm  
Saturday morning 9.00-9.30am  
(appointments available at other times)

**01969 650263**



### Hawes Countrystore



**"For All The Farmers Needs"**


**Not Just All Your Agricultural Supplies!**  
Country clothing, work ware & footwear.  
Pet, equine, poultry, wild bird feed,  
garden supplies and household goods!

**Call in & see for yourself!**  
**Tel- 01969 667 334 Fax- 01969 667 335**  
**Monday - Friday 8am - 5pm Saturday 9am - Noon**

CBAL Fuels- 01524 599 333  
Head Office (Carlisle)- 01228 552 650

Hawes @carrs-billington.com  
[www.carrs-billington.com](http://www.carrs-billington.com) Follow us





## EDGLEY GARAGE

**Edgley Garage, Aysgarth,  
Leyburn, North Yorkshire,  
DL8 3AD**  
**01969 663094**  
[edgleygarage@yahoo.com](mailto:edgleygarage@yahoo.com)

**MOT testing; Full servicing;  
Air conditioning service;  
Brakes, clutches and all  
general repairs to vehicles.**

## Mystery Picture

Last month's Mystery Picture was of Lord's Bridge near Bolton Hall.

Where can you find this gateway?



## Penhill Ladies Meeting

David Johnson - "Cold Times, 30 years of travel in the Arctic"

Our next meeting takes place on **Wednesday, September 18th at 7.30pm** at the Carperby Village Institute.

Since 1988, David Johnson has led or taken part in many expeditions to the polar regions, especially Greenland and Spitsbergen. His main interest is retracing historic polar journeys that took place during 'the Heroic Age' of exploration in the late 19th century.

In 1999, he and Glenn Morris were the first two Britons to complete an unsupported crossing of the Greenland icecap. In 2001, he was a member of the Polestar team that made the first winter traverse of Spitsbergen. In 2006, David spent a month with a group of Inuit hunters, learning their skills before setting out to reach the North Geomagnetic Pole by dog sled.

David talks about the physical and mental difficulties of living in extreme cold and isolation, and what it is like to follow in the footsteps of famous explorers such as Fridtjof Nansen and Robert Peary.

David is a fellow of the Royal Geographical Society, a member of the Arctic Club and in 2023, was elected a member of the Explorers Club of New York.

Non members are welcome at a cost of £5.00 a head.



Family run Teashop situated next to the magnificent Aysgarth Falls

Light Lunches ~ Soup & Sandwiches ~ Afternoon Teas

Cakes, Scones, Biscuits & Traybakes

Muddy Boots & Dogs Welcome ~ Card Payments Accepted

01969 663446

≈8,000 residential properties  
are at risk of flooding in  
the SUNO\* catchment.

We're working to change that. Chat  
to see how this will impact you.



Scan HERE  
or text hello ousewem 13  
to 07700 137 717



**OUSEWEM**

Rising Waters | Rooted Solutions

\*The river catchments of the Swale, Ure and Nidd merge upstream of the City of York to create the River Ouse (SUNO catchment).

All messages are anonymous. Standard messaging rates apply. For more information visit: <http://cityofyork.gov.uk/privacy-policy>



## Bainbridge W.I. News

So, August came and went without much sign of a tropical summer, even if we did have a few nice days.

At last the weather enabled some of our ladies to take a walk in Hackfall Woods which they enjoyed. They are hoping all will be well for a walk in September so plans are afoot to find somewhere for a nice gentle walk.

We had a couple of craft sessions - one learning peg looming and the other knitting and crochet. Is there no end to our talents? These sessions are really casual and fun and we invite you to come along and join us - they are FREE too!

Our August meeting saw us entertained by Gegan Davies from the Georgian Theatre Royal in Richmond. What a fantastic place that is? If you haven't been yet, you should! Gegan told us all about the history of theatre in Georgian times and how this wonderful theatre came into being. It is wonderful that it is still going strong after all these years! We are now planning to go to a forthcoming production to soak up the atmosphere of this intimate theatre on our doorstep.

The Garden Club has allowed our members the opportunity to check out other members' gardens and glean ideas. Some members headed to the Southport Flower Show where they had a fantastic day and came away with lots of ideas - and shopping!

Of course, the lunching ladies are still out doing what they do best - eating and talking!

## J. Wilman Property Clearance Solutions

Providing Property Clearance and  
Waste Removal Services in the Dales

Probate, Residential and Commercial  
Clearances, Scrap Metal Recycling,  
Yard /Garden Clearances.

All Work Considered

**Tel 07791656380 or email  
jtw9@live.co.uk for a  
Free No Obligation Quote.**

The August event was at The Bolton Arms in Downholme where they no doubt enjoyed delicious food.

Our September meeting will take place on **Thursday, September 19th**, starting at **7.30pm** in Bainbridge Village Hall. Our speaker that evening will be Lynn Iveson who is a local physiotherapist. She will be talking to us about how to stay fit and active.

So, in short, there is still plenty going on in our WI and we would be delighted to welcome you to join us for all the fun! Your diary will never be empty again!

If you would like more information about our busy and friendly WI or any of our events and activities, please contact our President, **Nicola Robinson** on **01969 650801**. We would be delighted to welcome you to our merry throng and can assure you of a warm welcome, lots of fun and plenty of opportunities.



# Home Run

*Pet sitting, House sitting, Dog walking*

I offer a friendly, personalised pet and house  
sitting service in Wensleydale and further afield.

Nicola – 07866 336924  
nicola@homerundogsitting.co.uk  
www.homerundogsitting.co.uk



## WCF Fuels North West



Red Diesel · White Diesel · Kerosene  
AdBlue · IHO · Agamax · Lubricants  
Additives · Fuel Cards · Tank Monitors

Order online at [www.wcfnw.co.uk](http://www.wcfnw.co.uk)  
Email us at: [enquires@wcfnw.co.uk](mailto:enquires@wcfnw.co.uk)  
or call our friendly team on **01524 733669**

## Calling All Music Lovers

Can you read music at all? Do you play a musical instrument? Are you perhaps a lapsed player?

You do not need to be a good player (though if you are, you will be much appreciated). The main thing is for you to be KEEN.

We, The Wensleydale Orchestra, are a group of totally amateur but enthusiastic and friendly musicians whose number has sadly dwindled in recent years. We have a dedicated, encouraging and patient conductor and we all enjoy playing music together - classical and more modern. We would love some more players to join us next term in our new venue.

We will be meeting on **Monday evenings** from **7.30pm to 9.30pm** (including a break for refreshments) in Bellerby Village Hall.

Our next term will run from **September 16th to December 2nd**, with a two-week break for half term. Why not come along and see if it suits you? For more information, please ring **Fiona** on **07870 746992** or email [johnstonantonia92@gmail.com](mailto:johnstonantonia92@gmail.com).

## Come and Sing With Us

Swale Singers is a group of locals who enjoy singing classical music. We perform two concerts a year - a summer one at the Swaledale Festival and a winter one.

We start autumn rehearsals on **Sunday, September 8th** at Reeth Memorial Hall, working towards a performance in December of Elgar's 'The Spirit of England' and 'Toward the Unknown Region' by Vaughan Williams.

We are looking for new voices and would love you to join us. Perhaps you are an avid listener of the increasingly popular Classic FM and wonder what it would be like to sing rather than just listen, or someone who already sings in, say, a community choir and would like to try something a little different. It might be classical music but we are not stuck-up, it is great fun and there are no auditions!

We will meet in Reeth Memorial Hall, DL11 6QT, at **3.00pm on Sunday afternoon, September 8th**. Just turn up or if you want to know more, contact the chairman **Richard Wells** on **07860 373624** or e-mail [rmwellsew14@gmail.com](mailto:rmwellsew14@gmail.com).

## Churches Together Harvest Celebration

Harvest time is here so come along to celebrate at **6.30pm on Sunday, September 8th** at Hawes Market House at our annual Harvest Service, this year lead by Rev. Gillian and Mr. Scott Lunn with Hawes Silver Band. A great tradition for residents and visitors to support and enjoy.

## Hawes Christmas Lights

Thank you to everyone who supported our Supersonic Queen night. A goodly sum was raised and we hope to have another act next year.

If you have a suggestion, please tell Liz Lawson at Wensleydale Press or any other Hawes Christmas Lights committee member.

## YOREBRIDGE HOUSE



Restaurant with Rooms

Bar & Lounges  
open daily

Afternoon Tea & Light Bites  
served daily 12-3pm

A la Carte & Tasting Menu  
served Mon-Sat 6-8pm

Sunday Lunch  
served Sundays 12-4pm

01969 652060

[equiries@yorebridgehouse.co.uk](mailto:equiries@yorebridgehouse.co.uk)  
Bainbridge, North Yorkshire, DL8 3EE

## D MOORE & M BLACKHURST



BUILDERS

GENERAL  
MAINTENANCE

*All types of building work undertaken  
25 years' experience ~ Free Estimates*

**07772 284602 ~ 07975 897715**

3 Woodburn, Hawes. 01969 667505



## Autumn Events

The Yorkshire Dales environmental charity Friends of the Dales programme of monthly online talks resumes in October with the following now available to book:

Online talk: An Inclusive National Park:

**Wednesday, October 23rd, 5:00pm.**

Trustee and Churchill Fellow, Mohammed Dhalech, will discuss the three challenges of organisational culture, representation and racism which must be tackled in order for everyone to enjoy our National Parks. Book via: <https://www.trybooking.com/uk/DNLM>.

Online talk: The Yorkshire Dales National Park – 70 years on:

**Wednesday, November 20th, 5:00pm.**

In celebration of the 75th anniversary of the National Park movement and 70th anniversary of the establishment of the Yorkshire Dales National Park, Mark Corner, our former Chair of Trustees and the current member champion for the natural environment for the National Park Authority, will review the achievements of the National Park and consider the opportunities and challenges that lie ahead - especially in relation to nature recovery and community sustainability. Book via: <https://www.trybooking.com/uk/DNLO>.

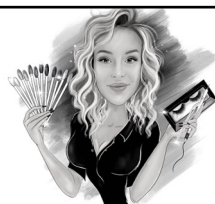
## Hawes Junction Chapel

Mount Zion, Garsdale Head, LA105PT

**Saturday, September 21st at 7.30pm.**

Harvest Festival with the Longton Family

Light refreshments will be served  
at the close of the service.



*The Parlour*  
HAWES

Nails • Lashes • HD Brows • Aesthetics  
• Microblading • Teeth Whitening

07794331509



Scan the QR code  
to book



## Sycamore Country Store

*Now Open Inside Sycamore Hall*

**OPENING HOURS:**

**MONDAY TO FRIDAY. 9.00 am to 1.00 pm**

Selling a wide range of everyday essentials,  
including dairy products, fruit & veg, bread,  
cakes & savouries, sandwiches and sweets

## PENNINE PRINT



Full Colour Print  
Invites - Tickets  
Brochures - Leaflets  
Menus  
*all at affordable Prices*

**simon@pennineprint.co.uk**

Tel: 07860 620 411

## WENSLEYDALE TREE and HORTICULTURAL SERVICES (Est. 1995)

**DAVID ALLEN ( HND Arboriculture)**

**CHARLIE ALLEN ( BSc Arboriculture)**

Fully insured (£5million) professional tree work:  
felling, crown thinning etc.

Petrol log splitter and woodchipper for hire.

Tree stump removal.

Hedge establishment and maintenance.

Supply/ planting of forest/ ornamental trees.

Fire tree maintenance. Weed control services.

**treeshhawes@gmail.com**

**01969 667364 or 07811 576108**

## Reeth Memorial Hall Events

**Saturday, September 7th** – Sound of the Sirens. The duo's musical and vocal dexterity dovetail beautifully on the co-written songs, which range from beautiful, emotive ballads, to up-beat, foot stomping, hands in the air, sing-along anthems. Tickets £16(£18 door).

**Saturday, September 21st** – The Enigmatic Genius of Jake Thackray – presented by Paul Thompson. Paul who has performed Jake's songs on radio and at venues nationwide, has also co-written a book on him. He will be singing Jake's songs and talking about his colourful life. Tickets £10(£12 door).

**Friday, October 4th** – Blackbeard's Tea Party. Drums, electric guitars, fiddle, melodeon and 4-part vocal harmonies combine to create music that is drenched in tradition but filtered through a kaleidoscope of modern rock and pop. Tickets £17(£19 door).

**Saturday, October 12th** – John Tams (Sold out – contact us to go on waiting list).

Tickets for concerts are available from Reeth PO or phone **Glen Steward (01748 884989)** or visit [www.reethmemorialhall.co.uk](http://www.reethmemorialhall.co.uk) – tickets are half-price for under 16s. All concerts **8.00pm** unless otherwise stated.



### Wensleydale Craft Fairs

Quality crafts by local and regional makers

at the Market House, Hawes

**7 - 8 September**

**28 - 29 September**

[www.wensleyfairs.co.uk](http://www.wensleyfairs.co.uk)

**Tel: 07857 439450**

### Sykes House in Askrigg Grocery Shop and B&B

Shop Open 7 days a week

Enquire for  
B&B bookings at

[www.sykeshouse.co.uk](http://www.sykeshouse.co.uk)

**01969 650535**



Swan Farm, Redmire,  
Leyburn DL8 4HA  
**01969 625647**  
[castletimberbuildings@mail.com](mailto:castletimberbuildings@mail.com)  
[castletimberbuildings.com](http://castletimberbuildings.com)

All of our products are hand made to order, from the smallest of sheds to the more elaborate designed summer houses. Our team of experienced joiners and specialists are on hand to advise and guide you, to help get the most of your product. We aim to deliver the highest quality buildings, tailor-made to your requirements using only the finest quality timber and ethically sourced. You can be reassured that we also care for the environment.

## CHAPEL GALLERY

Work on display from local artists  
and crafters

Coffee and cakes

Dogs and children welcome

Open daily (except Sundays)

**11am to 4pm**

Burtersett Road, Hawes, DL8 3NP

**Tel: 07474 138536**

[info@chapelgalleryhawes.com](mailto:info@chapelgalleryhawes.com)

[www.chapelgalleryhawes.com](http://www.chapelgalleryhawes.com)



**Robin Jessop**

### Free Market Appraisals

For Selling & Letting Rural Property.

Specialists in Selling by Auction.

Market Valuations for Tax Planning,  
Lending, Compensation and Council Tax  
purposes

Marwood House, Railway Street, Leyburn

**Tel: 622800**

## Middleham and the Dales Local History Group

**Wednesday, September 18th  
at 2.00pm**

**at Harmby Village Hall**

**Life before Sat. Nav.**

by Hilary Jones

Hilary Jones is vice-chair of the Milestone Society and will describe its work and why these often overlooked stones now need friends!

In Life before Sat. Nav. - the story of the humble milestone, she explores how we find our way around; now and how we did it in the past.

She considers the development of the road network and why these stones appeared. Local examples from North Yorkshire will be featured with plenty of opportunity for discussion.

Members, new members and visitors are always welcome, annual membership is £12 for nine meetings and visitors can attend for £3 per meeting.

For more information please contact **Tony Keates** on 01969 640436, or email [dotandtonyk@btinternet.com](mailto:dotandtonyk@btinternet.com).

## J. W. COCKETT and SON Family Butchers Estd. 1854

**Wholesale and Retail Bakers  
Main Street, Hawes  
Tel 01969 667251**

**Best Quality Meats  
High Class Baking  
Freezer Orders Supplied**



**Wednesday 4 September 2024  
Hawes Market Hall**

Entry from 7.00pm, for  
Eyes down at 7.30pm

Tea, coffee, soft drink with a biscuit  
available during the break

**Profits to Dalesplay**

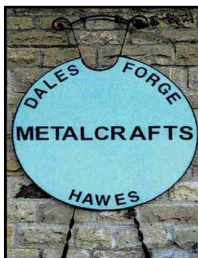


**Wednesday 11 September 2024  
Hawes Market Hall**

Entry from 7.00pm, for  
Eyes down at 7.30pm

Tea, coffee, soft drink with a biscuit  
available during the break

**Profits to Hawes Youth Group**



**Dales Forge  
Metalcrafts**

Tel: 07729 105466

Unit 5, Raynes Court  
Hawes, North Yorks.

[dalesforge@btinternet.com](mailto:dalesforge@btinternet.com)

## THE HEALING COLLECTIVE

Encouraging health and well being  
with a range of therapies.

*Therapies for animals also available.*

Coach House, Berry's Farm Shop & Café,  
Swinithwaite, DL8 4UH. t.0845 474 2383

[info@healingcollective.co.uk](mailto:info@healingcollective.co.uk)  
[www.healingcollective.co.uk](http://www.healingcollective.co.uk)



## Bellerby Study Group

Meetings are on **Wednesday at 7.30pm** in the Memorial Hall, Church Street, Bellerby, DL8 5QL. Talks are followed by refreshments and a chance to chat.

The cost for this term will be £15 to join as a member for the term of 8 meetings, or £3 for a single visit. Any queries can be directed to **Judy Asher** on **07968 596676**.

**October 2nd:** Dee Venner – The National Garden Scheme.

The history, operation and how to participate in the scheme.

**October 9th:** Raymond Clarke – The Geological, Industrial and Agricultural History of The North York Moors.

Conditions and practices that have shaped the Moors over two million years.

**October 16th:** Julian Pinches – Leyburn Community Shed.

A new social space due to open in the Autumn.

**October 23rd:** Ed Cook – Meadowmakers Native Wildflower Propagation.

Advice on restoring the ecosystem, showcasing special wildflowers and those which attract insects. There will also be a plant sale of large plug plants.

## DENTURE PROBLEMS?



Denture Studio

**Are you unhappy with the look or fit of your existing dentures?**

**WE CAN HELP**

Our in-house Clinical Dental Technician Mark can provide quality bespoke dentures designed to your individual needs



To Book  
**FREE**  
Consultation **CALL**  
**01677 422968**

**Website:** [www.orcharddentallab.co.uk](http://www.orcharddentallab.co.uk)  
**Email:** [info@orcharddentallab.co.uk](mailto:info@orcharddentallab.co.uk)  
**1 The Villas, Bridge Street, Bedale, DL8 2AB**

## Hardraw Church Event

### An Uplifting Musical Evening

Please join us in Hardraw Church on **Saturday, September 14th at 6.30pm** for a varied musical evening featuring Dave and Sarah Clark, Irene Whaley and Andy Souter and Askrigg Ladies who sing for pleasure. Refreshments available. Entry free of charge, but any donations will be greatly appreciated and will be added to our ongoing Organ restoration fund.

## News from Bainbridge Vets

We have recently been seeing an increase in the number of animals that are being presented to us with ticks. Looking at how parasites are changing these are likely to become more problematic to us in the next few years. There are a number of ways in which we can control the tick population both in farm and small animals.

For more information on effective tick control please contact us at the surgery on **01969 650263**.



- City & Guilds qualified
- Fully insured
- Certificates issued
- Prompt professional service
- NO MESS - NO FUSS!

**Martin Tradewell**  
**QUALIFIED CHIMNEY SWEEP**  
**01969 640099**

5, The Row, Horsehouse, Leyburn. DL8 4TT  
Email: [martin@daleschimneysweep.co.uk](mailto:martin@daleschimneysweep.co.uk)



**JB TV AERIAL  
& SATELLITE SERVICES**



**John Banks**  
Proprietor

Telephone: 07891 944175  
Email: [johnbankshawes@gmail.com](mailto:johnbankshawes@gmail.com)



**Concert at  
St Andrew's Church Aysgarth**

**Saturday, September 28th  
at 3.00pm**

Hannah Yeadon - Soprano, accompanied by  
John Foster. Tegan Addison - Piano.

Tickets: £7.00 on the door

Proceeds to be shared between Colburn  
Community Support and St. Andrew's Church

**Stalling Busk Harvest Supper**

150th anniversary celebration  
Harvest Supper

At Stalling Busk Schoolroom.

**Friday, September 27th  
at 7.30pm.**

All welcome.

**Music Tuition for all ages with  
[www.colinbaileymusic.co.uk](http://www.colinbaileymusic.co.uk)  
07711 211169**

**Drums & Percussion; Vocals;  
Piano & Keyboards; Music Theory;  
'Get Musical' Workshops.**

**Visit the ewe-commerce store  
for ewe-nique merchandise.**

**Postcards, mugs, magnets,  
t-shirts and more.**

**Eunice as ewe've never seen  
her!**

**[webpr.co.uk](http://webpr.co.uk)**

**W.S.HARTLE  
FAMILY BUTCHER, WEST BURTON**

Best Quality Meat, West Burton Lamb,  
Homemade Sausages and Burgers,  
Free Local Delivery and Freezer Orders

Tel: David on **01969 663302** or visit  
[www.hartlebutchers.co.uk](http://www.hartlebutchers.co.uk)



**T O M   A D D I S O N**

FINE FURNITURE

Fine quality furniture handcrafted in the heart of  
Wensleydale.

**Free standing and fitted furniture designed &  
handmade to your requirements.**



All enquiries welcome: **07585952951**



[tom@tafinefurniture.co.uk](mailto:tom@tafinefurniture.co.uk) [www.tafinefurniture.co.uk](http://www.tafinefurniture.co.uk)



**Barn Studio Bookkeeping**

Bookkeeping | Tax Returns | VAT Returns  
Company and Sole Trader Accounts

*Friendly service in the Yorkshire Dales*

**Terry Newman MICB | 07572 842398  
[barnstudiobookkeeping@gmail.com](mailto:barnstudiobookkeeping@gmail.com)**

Bolton House, West Burton, DL8 4JU



**M Fothergill**

**Building Services**

*All aspects of building work  
undertaken*

**667936 /**

**07966 624649**

**Hawes DL8 3RP**

Plastering Alterations Extensions  
Roof work General Maintenance



**Yorkshire Dales Accountancy**  
Chartered Accountants

**taxation & business advisors**

We provide a broad range of accountancy  
and taxation services to our clients.  
Please feel free to contact Martin or Hazel.

E-mail:

[info@yorkshiredalesaccountancy.co.uk](mailto:info@yorkshiredalesaccountancy.co.uk)

**Telephone: 01969 678128**

Website:

[www.yorkshiredalesaccountancy.co.uk](http://www.yorkshiredalesaccountancy.co.uk)



## Hundreds of New Homes Waiting to be Built in National Park

The Yorkshire Dales National Park Authority is encouraging residents who have planning permissions for new homes to 'get building' in order to support the housing ambitions of North Yorkshire and Westmorland and Furness Councils.

Richard Foster, Member Champion for Sustainable Development at the YDNPA said: "With the urgent need for affordable housing firmly in the spotlight right now, I would encourage residents and landowners who have existing planning permissions, or who own allocated housing sites in the Local Plan, to

move their projects forward. The National Park Authority has approved 445 new houses over the last five years, so there is a supply of new homes waiting to be built now."

"We need to support the local councils in helping to get affordable housing built in the National Park, so households growing up in the area or working here can contribute positively to keeping schools open, retaining local services and contributing to the local economy. The sooner we can move forward with some of these sites the sooner housing becomes available for our local communities."

"The new Government has said much about planning reforms and one area that might be worth more discussion is how to ensure, once planning permissions for homes have been granted or land has been set aside for housing, that these homes actually get built. We have tens of thousands of homes across North Yorkshire where this is the case. I'd suggest people need to use it or lose it."

### MICHAEL MOORE and SON BUILDER AND PLASTERER Family Business Est 1906

Alterations, pointing, stonework,  
Roof work, garden patios, paths,  
plastering, insulated plaster  
boarding,  
Over-skimming Artex walls and  
ceilings, tiling walls and floors,  
underfloor heating, PVC sash  
windows.

**Tel: 01969 667045**  
**Mob: 07968 684942**

**Hawes DL8 3NS**

# H & M

CRAFTSMEN

Ingleton | Est. 1987

**KITCHENS · BEDROOMS · STUDIES**

High Quality, Bespoke Furniture With  
Full Design And Fitting Service



Showroom: Ingleton Industrial Estate, LA6 3NU  
015242 41535 · [kitchensandbedrooms.co.uk](http://kitchensandbedrooms.co.uk)

AYSGARTH  
FALLS  
HOTEL



Now serving Afternoon Tea by advanced booking  
Wednesday - Saturday 12pm - 4pm



Food served daily from 12pm

[www.aysgarthfallsotel.com](http://www.aysgarthfallsotel.com)  
01969 663775



Mike Addison FRCO C.  
**OPTICIAN**

### Mike Addison Optician

Market Street, Kirkby Stephen,

**017683 71555**

Email : [infoks@mikeaddisonoptician.com](mailto:infoks@mikeaddisonoptician.com)

- Providing eye care for all the family
  - Private & NHS patients welcome
  - Children & over 60's receive free eye examinations
  - Supplier of all spectacle & vision related products
- or The Shire Hall, Appleby, 017683 53199

## Wensleydale Concert Series

It always comes as a surprise to be writing about our last concerts of the series. Eighteen months of preparation and the series flies past before you know it!!

We have two concerts in September, both at St Andrew's Church, Aysgarth at **7.30pm**:

**Saturday, September 7th** - Tango Siempre Quartet;

**Saturday, September 21st** - Pianist Vitaly Pisarenko.

Tickets are £20 (£18 in advance) and £1 for anyone in full time education. See our website for full details at [www.wensleydaleconcertseries.co.uk](http://www.wensleydaleconcertseries.co.uk).

Tango Siempre are the leading UK tango band performing all types of tango music from many traditions, including later tango music that overlaps the classical music tradition. If you are a fan of BBC Strictly Come Dancing you may have seen and heard them before and they created three sell out, Olivier nominated, national tours of Midnight Tango featuring Vincent Simone and Flavia Cacace.



"Tango Siempre's playing has the verve and gut-wrenching rhythmic drive associated with the greatest Argentinian bands, and their account of the scores, especially marvels by Astor Piazzolla, has the earthy vitality, the urban chic, so central to tango's music and steps... here is the tango, raw, intoxicating, speaking with its true voice. For the violinist Ros Stephen, the pianist Jonathan Taylor and their colleagues, much admiration" - Financial Times.

"... a brilliant fusion of classical, tango, jazz and roots" - The Guardian.

Ukrainian pianist Vitaly Pisarenko is a multi international prize winner. Having won the Eighth International Liszt Competition in Utrecht and awarded 3rd prize at the

Leeds Piano Competition he has forged an international career performing in all the major concert venues in Europe, America and the Far East. Our final concert will be a sensational



exhibition of a pianist at the height of his powers featuring music by Schubert, Schumann and Liszt. Really a truly brilliant end to our 2024 series.

"Mr. Pisarenko played with prodigious technique, myriad shadings and scrupulous accuracy." - Anthony Tommasini - New York Times.

Thank you to everyone who has supported us this year - without you our concerts would not be possible. Look out for our 2025 series which will be our 10th anniversary!



**A personal friendly service for  
'all creatures great and small'**

- Small animal consultations, diagnostics, and surgery
- Budget friendly preventative health care plans for dogs, cats, and horses
- Farm Animal routine work
- Ambulatory equine services
- In-house 24-hour emergency service for small animal, farm, and equine

**01969 422201**

[www.wensleydale-vets.com](http://www.wensleydale-vets.com)

[info@wensleydale-vets.com](mailto:info@wensleydale-vets.com)



## Orthopaedic Massage

Back & neck pain, strains & sprains  
Nerve injuries, sciatica, chronic pain

**Robust Covid-Secure  
procedures in place**

**Clinic in Hawes**

**07975 999373**

Find me on **Facebook** [www.reflex-om.com](http://www.reflex-om.com)



## Yorebridge Sport and Leisure Centre

The Wensleydale Centre, Askrigg.  
Tel. 01969 650060

Our Members find us a friendly and flexible gym for everyone. Read our reviews below:

One day, my foot felt strange. A bit numb and a bit tingly. The doc diagnosed neuropathy. 'There's no cure, but keep it moving'. Well, at 86 my days of cycling and long hikes are long over, so I decided to go to Askrigg gym for some advice. Kirsten Civil offered helpful suggestions, and seeing that I was a bit bashful about joining a class, she came to my house and designed a course specially for me.

In the kitchen I walk along the first side on to the counter, on tiptoe. Then along the next side, heel and toe. Third side, on my heels, and along final side, backwards. Repeat! Easy to remember and it helps my balance. Then she got me to do gentle squats, ten of which I do in front of the tv, every time I switch it on; also lunges, stepping forward with bent knee. I creaked a lot but am improving now. Stand up and sit down ten times before each meal. Try to stand on one leg. Through the gym Kirsten supplied me with resistance bands for arm and leg stretches, and taught me how to exercise my troublesome foot.

My family tell me I look fitter than I have done for years, and my balance has improved as well as my pelvic floor. I'm fit enough to join the exercise class after all! So if anyone thinks the gym is for muscular

young folk pumping iron and going on cross trainers, think again. The gym, and its advisers, are there for us all. - Sylvia, 86.

During a recent, and unexpected, trip by ambulance to hospital, the medical team worked hard to reduce my blood pressure. The team were incredible and what quickly became apparent was that my level of fitness meant I was able to make it home and have made a full recovery. Visiting the gym a few times a week, where I work on my core strength, enabled my body to cope with the medical emergency and aid recovery. - Premier Member, 76

I've found the gym to be a great asset to the area, it's easy to get to, has flexible opening times and all the members are friendly and welcoming. I've never been unable to do any exercise due to lack of equipment and everything is clean and in good working order! - Amy, Student Member, 19

I'm so grateful to have such great facilities on my doorstep. Going to the gym has really improved my confidence. - Junior Member, 13

Don't hesitate to get in touch to arrange a visit and a friendly and confidential conversation. Email [admin@yorebridge-sport.co.uk](mailto:admin@yorebridge-sport.co.uk), or phone 01969 650060.

## McGARRY & Co. Solicitors

**From small personal matters to larger commercial transactions, for personal advice in an impersonal world.**

**Market Place, Hawes,  
North Yorkshire DL8 3QS  
Telephone No 01969 666290  
or email  
[office@mbmcgarry.co.uk](mailto:office@mbmcgarry.co.uk)**

**Farm and Home visits by  
appointment**

**Regulated by The Solicitors Regulation Authority  
No. 553987**

## Designer Makers MARKET

Friday & Saturday 18<sup>th</sup> & 19<sup>th</sup> October  
10am to 4pm

**THE GARDEN ROOMS**  
at Tennants, Leyburn DL8 5SG

**Unique handcrafted goods  
direct from the maker**



Two day event,  
spread over  
two floors and  
showcasing  
approximately  
thirty 'handpicked'  
designers, artists & craftspeople  
from around the region

**DEMONSTRATIONS &  
OPPORTUNITIES TO 'HAVE-A-GO'**

For more information and a list of stallholders  
go to [www.designermakersmarket.co.uk](http://www.designermakersmarket.co.uk)  
or our facebook page



Admission is free but a donation  
for Herriot Hospice Homecare  
would be gratefully received



The team is made up of highly trained volunteers available, 24/7 in any weather, any time of the day or night. On average we respond to between 40 to 50 calls each year.

Between July 8th and August 11th it was a busy time with a total of 15 incidents!

Incident 38: August 10th: Called by the Police to rescue an injured mountain biker following a crash on the popular Swale Trail. Treated on scene by a passing retired doctor and then by team medics and our team doctor. Evacuated to the school playing fields for final transport by air ambulance.

Incident 37: August 3rd: A walker called for help having become surrounded by cows on steep ground. Fortunately while we were responding the cows moved and self-recovery was achieved

Incident 36: July 28th: Called by the Ambulance Service to rescue an injured walker near Masham - vehicle dispatched from the Ard Rock, treated on scene by the Ambulance and team. Then evacuated to the road.

Incident 35: July 28th: Called by the Ambulance Service to rescue an injured motor bike rider between Mel's and The Tan Hill Inn. Local team members arrived quickly to support the air ambulance and a vehicle was dispatched from the Ard Rock.

Incident 32,33,34: July 28th: Three days of safety cover at the Ard Rock the usual bumps and scrapes dealt with. Thanks to all the folk who we chatted with and dropped us a donation. Thanks to the other Mountain Rescue teams and Ambulance crews who assisted.

Incident 31: July 25th: Called by the Ambulance Service to rescue an injured farmer on the hills above Marrick, a quick response as we had team members already setting up at the Ard Rock event and team members search dog training locally. We were assisted by a member of the North of Tyne Mountain Rescue Team .

Incident 30: July 24th: Called by the Police then Ambulance Service to rescue an injured walker in steep woodland near Round Howe. Treated by the team then Ambulance Service and evacuated by stretcher to the road.

Incident 29: July 22nd: Called by the Police at 2:30am to search for a missing lady seen heading into woodland near Colburn area. Quickly located by Police and MRT, assessed for injuries by the team. It was still dark

Incident 28: July 20th: Called by the Ambulance Service to rescue an injured trials bike rider below Little Whernside in Coverdale. As the team arrived the casualty had been assisted to the waiting Ambulance.

Incident 27: July 20th: We provided rescue cover for the Dales Runner race at Muker, a couple of minor injuries dealt with.

Incident 26: July 16th: Called by the Police to rescue a walker suffering a medical emergency on the fells above Booze, treated and evacuated by the team just before the weather changed

Incident 25: July 12th: Just as incident 24 was ending, incident 25 popped up! We were alerted to another well-equipped D of E, one of the group had fallen and injured their ankle. The rest of the group provided shelter and first aid until the team arrived. Once on scene the team Dr provided pain relief and then we had a 2km stretcher carry to the Ambulance.

Incident 24: July 12th: Called by the Police to rescue a member of a well organised D of E group above Great Punchard, who had become trapped in a bog. As the team arrived the casualty had been rescued by the rest of the group but was wet and exhausted. The whole group was then returned to the road by the team.



## The Iron Maiden

*Not enough hours in the day?  
Fed up of never ending ironing?*

My ironing service is definitely a way of buying back much needed quality time in a busy life!

**Tracy Hume**

**07527 796523 or 01969 666048.**

Can arrange collection/delivery

# Index to Advertisers

	Page		Page
Accountants, O'Reilly, Hawes	14	Logs, Springbank Logs, Hawes	17
Accountancy, Yorkshire Dales	33	Logs, Seasoned Hardwood	5
Advertising Rates and Contacts	40		
Appliance Repairs, Bartlett	17	Massage, Mobile Therapist	15
Aysgarth Falls Hotel	34	Middle House, Askrigg	18
		Music Tuition, Colin Bailey	33
Bear Cottage Interiors	23		
Boiler Service – Efficient Heat	5	Nails, Lashes etc, The Parlour, Hawes	29
Boiler and Aga Service, M.F.W.	17		
Bookkeeping, Barn Studio	33	Optician - Mike Addison	34
Builder and Plasterer, M. Moore and Son	34	Orthopaedic Massage, Reflex	35
Builder, Dinsdale John and Ted	17	Ousewem, Flood Prevention	26
Builders, Moore and Blackhurst	28		
Building Contractor, Andrew Hawkins	7	Pet and House Sitting, Home Run	27
Building Services, Fothergill M	33	Physio, Arena	18
Butchers, Cockett, Hawes	31	Plumbing and Heating, Parfitt J	17
Butchers, Hartle, West Burton	33	Plumbing & Heating, Upp Wnslydale	11
		Portable Appliance Testing	39
Chapel Gallery	30	Post Office,	
Chimney Sweep, Dales Sweep	32	Hawes, Bainbridge and Askrigg	39
Coach Travel and Holidays – Bibby's	13	Print Services, Pennine Print	29
Coal Merchant, Peacock	19	Print Services, Wensleydale Press	19
Cumbria Stove Centre	19	Property Clearance Solutions	27
Dales Forge, Metalwork	31	Scrap Car and Commercials Collection	13
Dales Garage	12	Sewing Needs; Kearton	14
Dales Web Solutions	7	Solicitor, Hall and Birtles	39
Decorating Supplies. Sanderson & Co	25	Solicitors, McGarry	36
Dental Lab, Orchard	32	Slimming World	15
		Sycamore Country Store	29
Edgley Garage, Aysgarth	25	Sykes House, Askrigg	30
Electricians - Teasdale	39		
Estate Agent, Jessop Robin	30	Tailoring - Applegarth Couture	13
		Taxi, Peacock, Bainbridge	19
Fabrics for sale	12	Tea Room, Hamilton's, Aysgarth	7
Fish Market, Hawes	14	Tea Room, Mill Race, Aysgarth	26
Flooring - NH	15	Tea Room, The Moorcock, Garsdale	6
Fuel Available, Dale Head Garage	13	Timber Buildings, Castle	30
Funeral Directors, Sanderson and Co.	4	Travel Specialists – Sturdy Travel	16
Furniture, Handcrafted, Tom Addison	33	TV Aerial & Satellite Services. J.Banks	32
Gardener required	7	Vets Bainbridge	25
		Vets, Wensleydale	35
Hawes Country Store	25		
H&M Craftsmen, Ingleton	34	WCF Fuels	27
Hairdressing, Edie Peacock	40	Wensleydale Craft Fairs	30
Hairdressing, Twisted	13	Wensleydale Creamery, Hawes	11
Healing Collective, Swinithwaite	31	Wensleydale Tree Services, D. Allen	29
Hearing Tests and Aids	12	Woodcraft Studio & Timber Services	6
Home care, Upper Dales	19	Woodwork and Decorating. S. Peacock	17
Ironing Service–Tracy Hume	37	Yorebridge House Hotel	28
		Yore Mill Craft Shop and Gallery	19
Joiner and Cabinet Maker, Bushby	13	Yorkshire Foot Clinic	11
Joiner, Solid Joinery Solutions	5		



## Leyburn Arts and Community Centre

August, over already, now it is September and we are near to Autumn approaching - can not believe it. August was a fairly quiet month for room hire as many groups have a Summer break but we are now looking forward to them all returning. Cinema, music events and special screenings are on the website so have a look and see what you fancy. But to mention just some - early in **September (1st and 3rd)** are the two screenings of Andre Rieu's 2024 Maastricht Concert, The Power of Love. Set against the backdrop of the historic Vrijthof Square, there will be iconic film scores, beautiful waltzes, tear jerking ballads and unexpected chart hits, something for everyone.

Other highlights coming are the return of the fabulous Edwina Hayes, Prima Facie with Jodie Comer and the anniversary production of Miss Saigon, all ones not to be missed if you haven't seen them previously (or so good that you want to see them again!)

During the Summer, work on the Community Shed has continued at a remarkable pace thanks to the dedicated volunteers. We shall shortly be issuing information on what is available in the Shed and how it will be used. The culmination of a lot of hard work and we are all quite excited!

The Autumn draw will be held on **Saturday, September 28th**. There are lots of very good prizes including a variety of hampers. Please remember to buy one - the fundraising goes towards our expensive summer activities such as the refurbishment of our old cold damp Toilet Block of which we are especially proud. A vast improvement for all our volunteers and users.

The Staying Healthy, Independent and Connected project continues on the **second Friday of the month, 10.00am to noon**. Access for people who need advice, guidance and support from specialised providers. An informal drop-in, no need to book, come and enjoy a free tea/coffee whilst you talk.

### Portable Appliance Testing (PAT)

Hawes DL8 3NT

Certificates & Reports supplied on each appliance tested.  
Please call for free quote and advice

Wayne Webster 01969 666020  
or 07766 640905

### TEASDALE ELECTRICAL

Your local electrician serving the dales and the surrounding areas

Askrigg

North Yorkshire

Tel - **07814 184974 (Steve)**

Email - [teasdaleelectrical@icloud.com](mailto:teasdaleelectrical@icloud.com)



Hall & Birtles  
-SOLICITORS-



For all your legal requirements offering a full range of services.

Hawes DL8 3QL, Tel 667171

email: [hawes@hallandbirtles.co.uk](mailto:hawes@hallandbirtles.co.uk)

and at Leyburn, Golden Lion Yard,  
DL8 5AS, Tel 01969 625526.

email: [Stuart@hallandbirtles.co.uk](mailto:Stuart@hallandbirtles.co.uk)

Regulated and authorised by the  
Solicitors Regulation Authority

### HAWES POST OFFICE in the Community Office

OPENING TIMES:

9.00am to 5.00pm Monday to Friday

9.00am to noon on Saturday

Phone number: **01969 667201**

### BAINBRIDGE POST OFFICE

Post Office open at Bainbridge  
in Sycamore Hall 9.00am to 11.00am  
Mondays and Wednesdays

### ASKRIGG POST OFFICE

In Sykes House, Noon to 2.00pm  
Mondays and Wednesdays



## LEYBURN ARTS & COMMUNITY CENTRE

Richmond Road, LEYBURN, DL8 5DL

Bookings & Info: **01969 624510** [leyburnartscentre.com](http://leyburnartscentre.com)

### C I N E M A

(£6, or £5 for 60+ / U14. Unless otherwise stated)

<b>SUN 1 SEPT</b>	2pm	<b>André Rieu's 2024 Concert</b> (Live Cinema) *£12
<b>TUE 3 SEPT</b>	2pm	<b>André Rieu's 2024 Concert</b> *£12 / £10 (Tues club)
<b>TUE 3 SEPT</b>	7pm	<b>Io Capitano</b> (15) 2h 1 (Exploring Film)
<b>FRI 6 SEPT</b>	6pm	<b>Amazing Grace</b> (2018) (U) 1h 29
<b>THU 12 SEPT</b>	7pm	<b>Prima Facie</b> (National Theatre Live) *£15
<b>FRI 13 SEPT</b>	6pm	<b>All of Us Strangers</b> (15) 1h 45
<b>FRI 20 SEPT</b>	6pm	<b>Fremont</b> (12A) 1h 31
<b>SUN 22 SEPT</b>	2pm	<b>Miss Saigon (25<sup>th</sup> Anniversary)</b> (Live Cinema) *12
<b>FRI 27 SEPT</b>	6pm	<b>Nobody Has to Know</b> (12A) 1h 39

### OTHER EVENTS & NEWS (\*Half price entry for our volunteers)

<b>SAT 28 SEPT</b>	7:30pm	<b>Edwina Hayes</b> (Live Music) *£12
<b>SAT 26 OCT</b>	7:30pm	<b>Guy Fawkes' Mother</b> (Live Theatre) *£12

*Please book events in advance if possible. Call us Mon-Fri 1-4pm*



## Edie Peacock Hairdressing At the Parlour

**Call: 07817 312906**

### Advertising

**Boxed adverts: £6, £12, £18  
(dependent on size)**

There is a big reduction for six issues or more, so for six issues the totals are:

**£25, £50 or £75**

**Greetings etc. £2**

**What's ons (non-commercial) are free**

**Contact for adverts:**

**Barry Cruickshanks**

**01969 667458**

**[uwnlinput@gmail.com](mailto:uwnlinput@gmail.com)**

*Whilst we try to ensure that all information is correct we cannot be held legally responsible for omissions or inaccuracies in articles, adverts or listings, or for any inconvenience caused. Views expressed in articles are the sole responsibility of the person by-lined. Articles by committee members carry just their initials.*

*We appreciate being asked before any part of the Newsletter is reproduced.*

### Postal Subscriptions

If you would like to receive the Newsletter by post every month the cost is £14 per annum. Please pay by BACS (**Account 74237721, sort code 51-61-33**) and send your full address details to [uwnlinput@gmail.com](mailto:uwnlinput@gmail.com). Or send a cheque for this amount (made out to the Upper Wensleydale Newsletter) plus your details to Karen Jones, Skellgill Cottage, Skellgill Lane, Askrigg, DL8 3JG.

### Published by

The Upper Wensleydale Newsletter  
Lilac House, The Holme, Hawes, DL8 3QR  
**01969 667458**

Email for submission of articles, what's ons, letters etc.: [uwnlinput@gmail.com](mailto:uwnlinput@gmail.com)

Newsletters on line, simply search on  
"Upper Wensleydale Newsletter"

Archive hard copies back to 1995 are in the Dales Countryside Museum resources room.

**Editors:** Barry Cruickshanks,  
Kevin Davis,

**Committee:** Malcolm Carruthers,  
Tony Hutchinson, Karen Jones (Treasurer),  
Neil Piper, Karen Prudden,

**Founded in 1995  
by the late Alan S. Watkinson**