

THE UPPER WENSLEYDALE NEWSLETTER

Issue 311

August 2024

**Donation please:
50p suggested**



Covering Upper Wensleydale from Wensley to Garsdale Head plus Walden
and Bishopdale,
Swaledale from Keld to Gunnerside plus Cowgill in Upper Dentdale.

Guest Editorial

Last winter my husband and I were walking home to our house on the outskirts of Askrigg in the dark. I was shining my torch and had a pale coat on so was as visible as possible and because there is no pavement we hugged the small verge as we walked along. A car was coming towards us and we could hear the car behind us slow down. The first car went past and the second car moved to overtake us but as he did so the window wound down and he shouted abuse at us from which we gathered that he thought we should walk on the non-existent footpath. Unfortunately the term of abuse he used was from the 60's and I hadn't heard it used since then, so I found the encounter hilarious as he was obviously quite young.

Sir if, and I doubt you are reading this, you are going to hurl abuse at people because you had to press the brake pedal, I think you need to update your vocabulary.

I thought this was a type of racism although the Oxford dictionary definition describes racism to be the discrimination to a person because of their ethnic group, so the young man shouting through his window was simply rude and ignorant.

When I first started 'dating' my husband whose father was Mauritian, my mother called me one evening to say that Mauritius was on the television and that I should watch it. When I turned on, the view was of Asian people, black people and white, in fact a multiracial country. But I rather suspected that my mother, who hadn't met Mike, was wondering what to expect and with the views that were prevalent when she grew up, was rather worried that Mike was anything other than white.

Mike's father left Mauritius at 16, joined the merchant navy and was a very good man. His mother was born in Burma in 1939 to missionary parents who had to walk across Burma to escape the approaching Japanese army. It's quite a story. The reason I'm telling you about his ancestry is because when we came here he worked a brief stint at a local company but resigned after two weeks. A little while later he was asked if he had left because of racism, which came as a surprise.

When he was a little boy he stayed out of the sun so the beautiful gold colour of him didn't develop into anything approaching brown for

fear of being beaten up! I also had a friend whose father was Arabic who was regularly either beaten or managed to run away from the prospect of being beaten. So from this am I to gather that racism is hatred towards, well anyone who isn't you?

I have had Parkinson's for about 12 years. Thankfully it is very well medicated and most people are surprised to know about it. Before I retired the only problems I encountered were if I had an upsetting event my dopamine level would have been non-existent resulting in very bad shaking. This has only happened twice in twelve years, never at work. After a few weeks of working at a library I was called into the manager's office and bombarded with a tirade of complaints from her. I was very surprised as she had up until that moment been very nice. The point she kept repeating was that I should have told her at the interview stage about my condition and that I had been offered the job under false pretences!

Now anyone who has a medical problem should read the facts about this before they get to the interview. An applicant does not need to disclose the fact at all never mind at interview stage. It is actually against the law for a potential employer to ask about your health or disability before offering you a job. I pointed this out to the furious manager but she had gone way beyond reason. I can only presume that the job wouldn't have been offered to me if she had known.

So this is prejudice against other people again. Isn't it plain to see that being disabled and looking for work is tough without managers making their own rules and laws! I don't understand. I can't say people are prejudiced

Submission of articles

Please note that all submissions should comply with current copyright legislation. If submitted articles are not the original work of the person submitting them, then all relevant permission should be sought and granted for reproduction.

**DEADLINE FOR COPY FOR THE
NEXT ISSUE IS**

**TUESDAY AUGUST 20th
PUBLISHED ON AUGUST 29th**

through ignorance because my parents were intelligent people, but very racist.

I had hoped that as the years passed so would these intolerances but this doesn't seem to be the case. A lot of times when I have heard people criticise other races or ethnic groups I wonder if they have ever met a representative person from these groups to talk to. Why, on the news, if a crime is committed by a non-white person is their colour included in the headline? It is never 'today a white person did this or that'.

I wish people were more tolerant and open hearted about this, maybe there wouldn't be so many wars if there was less hatred in the world. I'm not saying I am free of this. I'm not, but understanding it from the receiving end brings home all the problems caused by it.

So if the young man is reading this, thank you for slowing down. Maybe I should be grateful that at least he didn't run us over.

Rachel Dechezeaux



Family Activities

It is time to prepare for King's Club. This year on **Monday, August 5th** at **Leyburn**

Methodist Church and **Wednesday, August 7th** at **Hawes Market House** each between **11.00am and 3.00pm**.

Supported by both the Methodist Church and The Church of England. Free to attend, there will be family crafts, quizzes, puzzles, games, activities for all ages, refreshments and a gift bag to take away. Children must be accompanied by an adult. No need to book a place, just come along and bring your friends.

For more information please contact Rev'd Gillian on gillian.lunn@leeds.anglican.org or **07592 016476**.

Richmondshire Concerts

2024-2025 Season.

The first concert of the new season (six concerts in total) will take place at Richmond School DL19 7BQ at **7.30pm on September 14th**. It will feature Huw Wiggin, Saxophone and Oliver Wass, Harp with music from Bach to the 21st century via Ravel, Debussy and de Falla. Tickets £20 each (or six concerts for £60) from rsc.org or Castle Hill Bookshop, Richmond.



Eunice the Ewe

Last month I was hiding in the Hawes Bookfest advert on Page 12 and the lucky winner of the £10 prize is Sue Brett of West Burton.

Where am I this month? To enter for the £10 prize, please include your postal address if replying by email.



Home Run

Pet sitting, House sitting, Dog walking

I offer a friendly, personalised pet and house sitting service in Wensleydale and further afield.

Nicola – 07866 336924
nicola@homerundogsitting.co.uk
www.homerundogsitting.co.uk



The accuracy, appropriateness or legitimacy of any product or service advertised in this publication is the sole responsibility of the advertiser and not of the Upper Wensleydale Newsletter.

<u>In This Issue</u>	<u>Page</u>
Guest Editorial	2
Competition	4
Upper Wensleydale Benefice Services	5
Penhill Benefice Services	6
West Witton Feast	8
Notes from Thorney Mire	10
Newsletter Student Grants	14
What's On	20
Rainfall figures	21
Askrigg Produce Show	23
DCM News	24
Woodland Plastic App	30
Moorcock Show	33
Stopping River Ure Pollution	34
Aysgarth Church—New Doors	35
Little Green Bin—The Sequel	36

August Competition

Why should it always be words? Here is a change for you.

Using exactly four, and only four SEVENS each time, together with any mathematical signs as well: +, -, ×, ÷, /, () or the decimal point, make all the numbers from 1 to 12.

We'll do one for you:

$$(7+7+7)/7 = 3$$

Now it is up to you to get the other eleven.

Please send in your answers (as many as you can get!) to arrive by **Tuesday, August 4th**. Don't forget to include details of your nominated charity which will receive the £50 prize should you win.

July Competition Answers

They sound the same:-

1. Allowed, aloud
2. Bawl, ball
3. Rough, ruff
4. Draught, draft
5. Bare, bear
6. Herd, heard
7. Piece, peace
8. Wined, whined
9. Meddle, medal
10. Brake, break
11. Knight, night
12. Sighed, side
13. Hale, hail
14. Great, grate
15. Course, coarse

Several correct entries last month and the winner is Deborah Page of Redmire, whose nominated charity to receive the £50 prize is the Sycamore Hall residents/entertainment fund.

dales web solutions
bespoke web site design

All aspects of Web site design.

Visit: www.daleswebsolutions.co.uk

Email: info@daleswebsolutions.co.uk

Tel: **01969 666174** or **07931 822736**

Hawes Mobile Recycling Collection

There will be a mobile household waste recycling collection at the Upper Wensleydale Business Park in Hawes on **Saturday, August 17th from 9.00am to 1.00pm.**

The following household waste is accepted at all mobile centres:

Furniture (including beds, mattresses, sofas and chairs), bric-a-brac.

Paper, cardboard, telephone directories, books.

Glass, food and drink cans, foil, scrap metal.

Mixed textiles and clothes.

Fluorescent tubes, TVs and monitors, fridges and freezers, large appliances, small appliances. Wood.

SANDERSON & CO. FUNERAL DIRECTORS

A complete and caring funeral service
provided by an independent
family business established in 1879.



For personal and
dignified attention
in time of need
please contact

Richard Sanderson

Leyburn Business Park DL8 5QA

Tel: 01969 623143 (24hrs)

Mobile: 07710 652348

Email: sandersonandcoleyburn@gmail.com

We offer Golden Charter Pre-payment Funeral
Plans Please ask for further (written) details.

Drop-off points and contacts

For news, articles, reports, letters, What's On dates, competition entries, suggestions and comments:- All 01969 numbers.

Hawes:	Community Office	667400
Bainbridge:	Sylvia Crookes, 3, Bainside	650525
Askrigg:	Sykes Shop,	650535
Carperby:	Anthony Abraham Hall Garth	663243
West Burton:	Nadine Bell, Margarets Cottage	663559
Aysgarth:	Hamilton's Tearoom	663423
Redmire:	Kevin Davis Westholme	624165
Thoralby:	Neil Piper	663747
West Witton	Christine Barker, Chestnut Garth	624934

Heavens Above

We've 'shooting stars' galore this month when the annual Perseids meteor shower reaches its peak on the night of **August 12th** and the early hours of **August 13th**.

It's one of the best displays of the year with dozens of bright meteors every hour (up to a hundred if it's a really good year) streaking across the sky. Best viewing will be after 11.00pm when the Moon has set and the Earth meets the shower head on.

Perseids meteors (the name comes from Perseus, the constellation they appear to radiate from) are extremely swift, travelling at speeds well over 30 miles a second. They often leave multi-coloured trails as they burn up high in the atmosphere and are famous for producing a good number of really brilliant 'fireballs' often brighter than Venus and even the Moon at times.

You won't need anything more than your naked eyes to see the show - binoculars will only restrict your view of the sky - but you will need to find a dark location well away from street lamps and other sources of light pollution which will block out the fainter meteors. Using mobile phones is also a definite no-no as they'll just ruin your night vision which takes at least 20 minutes to develop properly.

Unlike 'sporadic' meteors which can turn up at any time, annual showers like the Perseids occur around the same date every year when the Earth passes through streams of dust and debris left behind by a comet as it travels through the Solar System.

In the case of the Perseids the parent comet is 109P/Swift-Tuttle (named after the two American astronomers who first discovered it back in 1862) which takes 133 years to complete its orbit around the Sun. With a diameter of around 16 miles, Swift-Tuttle is the largest known object to cross the Earth's path. That's twice as big as the body that probably led to the demise of the dinosaurs, so let's hope we don't bump into it one day!

It last visited the inner Solar System in 1992 so it won't return until 2125. It should be a spectacular sight as it passes just over 10 million miles from the Earth – a mere gnat's whisker as cosmic distances go. Let's hope there's clear skies for those of us still around to see it!

Al Birio



Upper Wensleydale Benefice Services

August 4th. The Gathering – St. Oswald's Church, Askrigg. Family Communion. **10.30am**

August 11th. Holy Communion – St. Margaret's Church, Hawes. **10.30am.**

August 18th. Songs of Praise – St. Mary and St. John's, Hardraw. **10.30am.**

August 25th. Holy Communion at St. Margaret's Church, Hawes. **9.30am.**
Lakeside Service at Semerwater including Marriage blessing **3.00pm.**

August Thanksgiving and Rest

How many of us, I wonder, take delight in the aroma of freshly baked bread? I find it so hard to resist. The supermarkets understand this and the marketing power it has to draw us like the 'Bisto Kids' of old, to follow its comforting fragrance into their stores.

Freshly baked bread is at the heart of an ancient Christian festival which is traditionally celebrated in August. 'Lammastide' is a celebration of the first fruits of the wheat harvest – an August Thanksgiving. A newly baked loaf, using the recently cut wheat, would be baked and used in that day's service of Holy Communion as a sign of gratitude and thanksgiving for God's love and provision. Our contemporary Harvest Celebration services are adapted from this practice.

The small church building of St Matthew's in Stalling Busk, Raydale, has for many years held a wonderful celebration of bread making every October, and this year will be no exception. If you have never been I encourage you to watch out for details nearer the time!

Summer picnics become extra special events when a fresh loaf is at their heart and I hope that as the holiday season blossoms we might all be able to enjoy and appreciate some memorable moments relaxing with others in a spirit of gratitude for all we have been blessed with. May this month bring you refreshing and renewal to your body, your mind and, essentially, your Spirit. As Jesus said:

"Come with me by yourselves to a quiet place and get some rest." Mark6:3.

Rev Dave

Penhill Benefice

Church Services: In case of bad weather, please check our website at penhillbenefice.co.uk/services for updates.

There will be a Telephone Service each **Sunday at 9.30am**. Dial **0333 0110 946** and enter room number 61337190# and PIN 7450# (local charges apply).

Sunday, August 4th:

10.30am Holy Communion Penhill Together Service, St Mary's, Redmire with the Newnham Family from MAF (Mission Aviation Fellowship). There will be informal question and answer time after the service with a cup of coffee and a chance to ask about Mission Aviation Fellowship's work. Donations for MAF will be very welcome.

Sunday, August 11th:

10.30am Holy Communion Penhill Together Service, St Bartholomew's, West Witton.

Sunday, August 18th:

9.30am Holy Communion, St. Margaret's, Preston under Scar.

9.30am Holy Communion and a Baptism, St. Mary's, Redmire.

11.00am Holy Communion, St. Andrew's, Aysgarth.

11.00am Morning Prayer, St. Bartholomew's, West Witton.

Sunday, August 25th:

9.30am Holy Communion Patronal Festival, St. Bartholomew's, West Witton.

11.00am Morning prayer, St. Andrew's, Aysgarth.

4.00pm Evening prayer, Thornton Rust Mission Room.

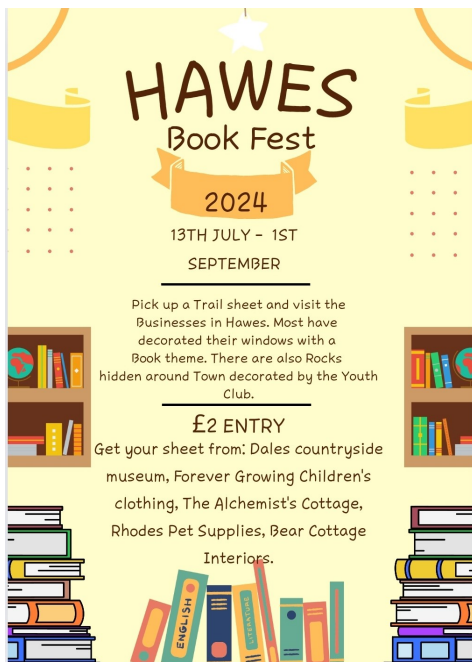
August Mid-Week Services:

Thursday 1st and 29th at 9.30am. Holy Communion, at St. Bartholomew's, West Witton.

Church Coffee Morning: **Wednesday, August 7th, 10.30am to noon** at Redmire Village Hall.

Church Afternoon Tea: **Wednesday, August 21st from 2.00pm to 4.00pm** at Redmire Village Hall.

Benefice Prayer Fellowship: **Tuesday, August 27th, 7.30pm** at Aysgarth Institute.



HAWES
Book Fest
2024
13TH JULY - 1ST
SEPTEMBER

Pick up a Trail sheet and visit the Businesses in Hawes. Most have decorated their windows with a Book theme. There are also Rocks hidden around Town decorated by the Youth Club.

£2 ENTRY
Get your sheet from: Dales countryside museum, Forever Growing Children's clothing, The Alchemist's Cottage, Rhodes Pet Supplies, Bear Cottage Interiors.



ANDREW HAWKINS BUILDING CONTRACTORS

NEW BUILDS | EXTENSIONS
BARN CONVERSIONS | ROOFING & GROUNDWORKS
APPROVED DAMP PROOFING & REMEDIAL TREATMENT SPECIALISTS

Tel: 0800 002 9779
Email: hawkinsbuilder@hotmail.com
Unit 5 Harmby Business Park, Harmby Road, Leyburn, North Yorkshire, DL8 5QA



Hamilton's Tea Room
At Yoredale House,
Aysgarth
Licensed Tea Room
HOMEMADE FOOD,
Light Lunches, Clotted Cream Teas
Open Feb-Nov, 10.30am - 4.30pm
Closed Mondays and Tuesdays
Tel: 01969 663423

Upper Wensleydale Ladies Luncheon Club

The Luncheon Club meets on the **4th Wednesday in the month** at Street Head Inn at noon for 12.30pm lunch.

Our new programme starts on **Wednesday, September 25th** with a talk by Colin Bailey, Blue Box Creative and Performing Arts.

On **October 23rd** we have flower demonstration by Rosemary and Twine.

Why not come along and join us, we are a small group and would make you very welcome. Anyone wishing to join please contact **Ray Wilkinson** on **01969 663613**, or **Sue Ryding** on **01969 663551**.

The Moorcock

Garsdale Head

Our licensed Tea Room is open daily (according to season) from 11.00am to 5.00pm.

We serve light meals, snacks, tea and coffee and a range of beers and spirits.

Bed and Breakfast facilities are also available.

Tel 07960 930047

www.the-moorcock.co.uk

Email.Themoorcock@outlook.com



WOODCRAFT STUDIO and TIMBER SERVICES

formerly Gayle Mill Trust

Gates, posts and fencing to suit all your needs. Timber sales of larch and local hardwoods cut and delivered for your own project.

Mobile sawmill to cut your own trees into planks or beams.

Seasonal firewood delivered throughout the Dales

Ring **01969 667320** or **07967 844636**
for further details



Recruiting For a New Artistic Director, Swaledale Festival

After seventeen years with the Festival, the Artistic Director, Malcolm Creese, has decided to move on to pastures new. The search is on for a new Director and we'd like to spread the net as widely as possible.

Below is the text we are using. Please share it as widely as you can with anyone you think might be interested, or who might know someone to whom it could appeal.

Swaledale Festival has an enviable reputation as one of the best "small" festivals. Respected by professional and amateur musicians across a wide range of genres, much-loved by our audiences and supported by our strong group of volunteers and a small team of dedicated staff, the Festival has been providing arts and music for over fifty years in the beautiful northern Yorkshire Dales.

The challenge for the Artistic Director is to create and deliver a programme that will delight and inspire Festival-goers and keep them coming back for more, while at the same time attracting a wider and more diverse audience. Running over the last week of May and the first week of June, a packed programme of around sixty events includes concerts, walks, workshops and art exhibitions. We make good use of characterful churches, village halls and, of course, the glorious Dales landscape.

Your strong musical background, which is likely to have a classical bias, coupled with your experience in organising arts events, will equip you to rise to this challenge. It's a part-time, flexible position which can be carried out working remotely with travel to occasional meetings.

Golden opportunities like this arise very rarely – the last time was seventeen years ago. For more information about the role, the Festival and how to apply, please visit www.swalefest.org/About/Jobs.

If this doesn't answer all your questions, please contact **Elizabeth Bedford** on friends@swalefest.org or **07957 207579** or call our office number **01748 880018**.

Deadline for applications: **August 27th**.



WEST WITTON FEAST WEEK-

Friday 23rd August

6.00pm to 7.00pm Potato Challenge Weigh-in with presentation of the trophy for the heaviest crop and the prize for the greatest number of potatoes. - **The Fox**

Saturday 24th August

Cottage Show in the Village Hall:

9.00am-10.30am submit entries

10.30am-1.30pm closed for judging

2.00pm - 3.30pm open for viewing

3.30pm prize giving

Bartle Mosaics Walk:

10.30am Meet at **The Fox**

Refreshments served in St.

Bartholomew's Church:

10.00am—4.00pm

Fell Race:

5.00pm Register at the **Playing Fields Pavilion**

6.00pm Race start—**Kaygram** followed by welcome back and presentation of prizes with barbecue and bar at the **Playing Fields**

The Burning of Bartle:

9.00pm Follow Bartle from **Kaygram** to **Grassgill**



Sunday 25th August

Patronal Service St.

Bartholomew's Church : 9.30am

All Welcome

Sunday Funday: 1.00pm

Playing Field Gates Open

Donations gratefully received

Raffle, Bar Barbecue, Boules, Wallops, Side Stalls, Refreshments (Donations of cakes, biscuits, scones etc. welcome.)

1.15pm Children's Fancy Dress Competition

1.30pm Children's Sports

2.15pm -3.00pm and 3.45pm - 4.30pm **Leyburn Band**

3.00pm Fun Dog Show

5.00pm Prize giving and Raffle Draw

Monday 26th August

Quoits Knockout

for the Robert Dent Memorial Trophy

All welcome. Register by **1.50pm**

Pond Life

This year, the pond marginal florindae primulas have been outstanding, flowering from late May through to the end of June. Their clusters of scented yellow blooms perched above spindly two foot stems have been effectively offset by the backdrop of a large purple rhododendron ponticum. I can't claim any advanced garden designer skills: the rhodie I planted years before creating the pond, so the effect's all a happy accident, but I keep that to myself when visitors call, ahem. Before florindae, throughout May, it was primula beesiana taking centre stage, with masses of purple flowers on a more modest one foot stem. To ensure success, plant both of these beauties in permanently moist soil – I give them a boosting liquid tomato feed in April, probably unnecessary but I just like to spoil 'em rotten.

Getting pond edge planting is a challenge as so many marginals are either too high, blocking out the light, or incredibly invasive, encroaching into borders and lawns. I well remember with a shudder an earlier planting scheme involving bistort, figwort and alchemilla, the lady's mantle.... a right rogue's gallery - what a clown I was. After 3 years the whole area was choked up, the pond had disappeared and that party animal, Himalayan balsam, had heard what was going on and wandered up from the river to join in the fun. To cap it all I'd placed a tiny cutting of flag iris in the middle of the pond, as a future centrepiece. Thanks very much it said, and proceeded to cover the entire water surface, an absolute plant riot. Eventually I was shamed into digging the whole lot out (the iris came out of the water like a huge plug) and starting again.

Here's my mindset at the time. Right, let's get it right second time around and keep it low and simple, building up gradually to the boundary wall. The aforementioned rhodie can be incorporated into the scheme as background, along with four clumps of my favourite matteuccia fern, the shuttlecock. These are

gorgeous plants, their soft, subtle greenery fairly glowing in the failing light. Imagine a minimalist garden planted exclusively with fern drifts and nothing else, very tempting. Dull? I don't think so, more calming. I believe it would work but am past attempting any more major upheavals, an accident called old age has occurred. I digress, back to the job in hand: along with the primulas can be positioned clumps of low growing astilbe chinensis pumila, with their striking red/purple spires. These come with a cast iron guarantee, along with the primulas, to behave themselves and not become the schoolyard bullies.

I find it's knowing when to give over, sit on your hands, take up knitting, anything, just leave to capable mother nature. It all looks a bit empty at first, but her urgency will prevail: once those roots bite and the first seeds scatter, you're away.

Nowadays, newts have taken up residence, dragonflies visit, and a huge, dismal frog lords it over all. He's a laugh, always looks like he wants to pick a fight, so no gratitude there for habitat creation.

Ed Gardener

Solid Joinery Solutions

All aspects of joinery and carpentry undertaken.

Bespoke joinery solutions made to your requirements.

Covering all Yorkshire Dales and surrounding areas

Contact Paul for a free, no obligation quote on **07980 167987**

Email: enquiries@solidjoinerysolutions.co.uk

Web: www.solidjoinerysolutions.co.uk

Firewood

Seasoned hardwood logs

Tel: 01969 662692

Mob: 07970 629227

EFFICIENT HEAT

**OIL BOILERS SERVICED
AND REPAIRED**

Contact Nick

07729 105466 / 01969 667847

Notes from Thorney Mire

Summer

Down the track, by the barn we have a tall mature ash tree. Every year this tree has come into full leaf and has seemed to have escaped the ash die back virus. Along our lane many ash trees are suffering from this condition and are either dead or dying, especially the young samplings which don't seem to stand a chance of reaching maturity. This year is different. The ash tree was very slow to come into leaf and I thought this could be due to the weather, but no, it too has succumbed to the disease. In twelve months it has gone from being what was thought to be a healthy tree to a sorry looking specimen. For safety reasons it will have to come down.

Each Spring I would sit in the courtyard with a cup of tea and watch the sun pass through the bare branches. Gradually over the weeks, the tree would come into leaf, the sun rise higher in the sky until the Solstice when the sun would just skirt over the top of the tree and Summer would be here. Then the reverse would happen as you headed towards Autumn. Now, I don't want you to think that I spend all my time sitting outside drinking tea, but sometimes the simple things in life are the best. I'm going to miss that tree.

Since we came to Thorney Mire we have planted approximately two hundred and fifty native trees, including sessile oak, holly, bird cherry, rowan and alder, also pine and larch for the red squirrels. We have three young horse chestnut saplings waiting to be planted in the top piece of woodland where horse chestnuts are already growing. There are none in the woodland by the beck as that is classed as semi-ancient woodland. Purists don't like horse chestnuts as they are not native to this country, they were introduced from Turkey in the late 16th century. They are not often found in woodlands, but in parks and gardens.

In defence of the chestnuts they have lovely white or pink candle flowers in the Spring which provide nectar and pollen for insects. Caterpillars feeding on the leaves provide food for blue tits and in Autumn certain mammals like deer feed on the conkers. Not to mention the hours of amusement children have had playing with the conkers. We have very few elm trees left and the ash is disappearing from our countryside so can we be too choosy about which trees we plant?

Walking through Shaw Ghyll I suddenly came face to face with an unusually large hedgehog on the footpath. We stared at each other for a while before it waddled off. On reflection it could have been pregnant as hedgehogs give birth in June and July. The following day I saw a baby hedgehog crossing our lane. Two different hedgehogs, two different locations on two different days, but I have not seen any since.

It's surprising how much wildlife you can see when travelling in the car. A stoat running across the road. A flock of about twenty lapwings flying near Ballowfields - they nest each year on the moors above there. Also a flock of birds drinking from a large puddle in the road left by the overnight rain. At first I couldn't tell what these birds were as the weather was overcast and they were in the shade of a large tree. When they flew away, they were swallows. It's not often you see swallows on the ground. We do not normally see swifts in this area but four were sighted one afternoon, but not seen again. After we banned the swallows from nesting inside the outbuildings, one couple started to nest under the eaves of the house, then abandoned it. I have only seen two swallows flying around this year, so far and no house martins. Several years ago we could count twenty to thirty swallows sitting on the wires waiting to migrate, but their numbers seem to have declined recently.

A pair of spotted flycatchers built a nest in the trellis immediately outside our front door. I don't know who was more startled each time I went outside, the flycatcher, or me when the bird flew out just missing my head. Into the small, but neatly built nest were five creamy, brown mottled eggs. Then one day there seemed to be a layer of feathers covering these eggs. Gradually as the days went on these feathers slowly rose up the nest like a soufflé on a low light until there were five yellow beaks and five pairs of shiny black eyes looking at me. I didn't



JB TV AERIAL & SATELLITE SERVICES

John Banks
Proprietor

Telephone: 07891 944175
Email: johnbankshawes@gmail.com



see them fledge and didn't see them again, except for one who tried to fly in through our sitting room window, but instead slid all the way down the glass and landed behind the window box in a very undignified position. I had to go outside and rescue it.

Sitting at our dining room table we could watch the parents working really hard to raise these chicks. They favoured a certain branch on the cherry tree and would dart backwards and forwards catching flies. I wondered if they used more energy catching the fly than they received from these insects, but I came to the conclusion that flies must be nutritious as both parents looked healthy and they had raised five healthy chicks. I did think about formulating an equation to work out if energy expended equalled energy gained, for the birds, but thought better of it. Life's too short and I have enough problems working out my daily Reference Intake on cereal packets.

Sylvia Turner

Alex Kravchenko

BSc (Hons) MChS

Chiropodist / Podiatrist

Member of the Health Professions Council

**Practising at
Yorkshire Foot Clinics
25, Frenchgate, Richmond DL10 4NZ
Bishop Auckland/ Hawes 667449**

**Clinic Tel 01748 850020
Email: yorkshirefootclinics@yahoo.com**

McGARRY & Co. Solicitors

**From small personal
matters to larger
commercial transactions,
for personal advice in an
impersonal world.**

**Market Place, Hawes,
North Yorkshire DL8 3QS
Telephone No 01969 666290
or email
office@mbmcgarry.co.uk**

**Farm and Home visits by
appointment**

**Regulated by The Solicitors Regulation Authority
No. 553987**

Macmillan Charity Coffee Morning

You are invited to join us on

Saturday August 31st at 11.00am.

At Thornton Rust Village Institute.

Come and enjoy coffee and cake.

No need to book, just turn up.

Thoralby and District WI

On **Tuesday, July 16th** we had a fascinating talk given by Jude Rhodes who is a professional genealogist. She calls herself a "Family Historian" as she loves the social history that is attached to the people and families that she researches. Jude demonstrated her passion by focusing her research on Thoralby. She traced the history of a man named Heseltine who was the publican of the George Inn back in the 1700s. He was also a blacksmith which was a very important profession as many people stopping at the Inn would want their horses taken care of as well as having a drink for themselves.

Our members enjoyed being able to link their own local knowledge about the people and places of Thoralby which made the talk even more interesting for Jude as well as everyone listening. In the last month there was a visit organised to Raby Castle. Everyone who went had a lovely day, enjoying the beautiful grounds, wildlife, the castle and of course the cafe. If you are interested in joining our welcoming and friendly WI or have any questions, please contact Sally Stone on 01969 663373.

Upper Wensleydale Property Services Ltd

**All aspects of domestic plumbing
and heating work undertaken
Bathroom supply and fitting, wet
room installation and tiling
Heating systems, and oil boilers
and tank installations**

**Please contact Malcolm
Grant on 07855 191466**

email: mgwensleydale@gmail.com

Modern Masterpieces

Masterpieces of 20th century music seldom turn up in Wensleydale. Two in six days is an epidemic. And don't you feel better for it. Played by an orchestra, Stravinsky's *Rite of Spring* is a staggering blend of violence and melting beauty: played by two pianists on the same piano it's a ferocious duel, an intimate partnership and an exhausting workout all in one. Yasmin Rowe and Daniel Grimwood played it in Aysgarth Church last month, another feather in the crown of the excellent Wensleydale Concert Series.

Seeing two pianists stretched to the outer limits of their technique and physical strength was thrilling stuff, one pair of hands sometimes crossing the other, one player occasionally drawing breath before hurtling back into the wild dance. The *Rite* is a ballet centred on a pagan ritual sacrifice of a young woman who dances herself to death to ensure the advent of spring. It lit up that damp June evening in Aysgarth. The rest of the programme was agreeable and beautifully played, but the evening had peaked early. What a pair of pianists!

The next partnership also began their recital with a startling piece of extraordinary beauty. The violinist Nazrin Rashidova made her solo debut at the age of 3 in Baku, and is now an internationally renowned soloist and musical thinker.

She began her recital with Daniel Grimwood (what a week he was having) with *Fratres* by the Estonian composer Arvo Part. The piece explodes into life with a scintillating sequence of chords - one violin filled the church - and explores them in a sequence of variations. It's full of magical sounds and shifting moods, and by the end piano and violin are united in a gentle, reflective partnership.

After a lovely piece of Grieg, Nazrin demonstrated her more reflective side in the second half, sweet romantic pieces with breathtaking flashes of her formidable technique. I'm pretty sure no better violinist has ever graced the Dales.

The concerts epitomised what quality can be seen and heard in our local concert series, in Wensleydale and beyond.

Alastair McLachlan

Coffee and Cake Mornings

at West Burton Chapel

Every 1st Tuesday of the month

August 6th

10.00am - Noon

Do come and join us

Hearing loss shouldn't make you feel isolated and anxious, we are here to help.



For all your hearing needs!

- Hearing test
- Free hearing aid trials
- Ear wax removal
- Tinnitus assessment and therapies
- Hearing aid repairs and servicing



CALL 01765 278 744

8 Queen Street, Ripon, North Yorkshire HG4 1ED

info@hearandnowonline.co.uk

www.hearandnowonline.co.uk

Dales Garage

Services we provide

Exhaust, Diagnostics, Brakes, Welding, MOT, Suspension, Timing Belts, Clutches, Batteries, Tyres, Services. All makes and models.

Unit 2, Hawes Ind Estate, Brunt Acres Road
Hawes DL8 3UZ

www.facebook.com/dalesgarage1

Call – James 07399 513605

Tyler 07376 487776



LIBERTY
FABRIC

Quality fabrics for quilting, dressmaking, etc., sewing accessories, a little wool/yarn .
Abbotstone House Collection,
Now at Unit 5 Raynes Ct,
Hawes, DL8 3UW
☎ 07921 058803

Yorebridge Education Foundation - Financial Assistance for Students – 2024/2025

Grants are being offered to students under the age of 25, who live in Upper Wensleydale, and are moving into, or are already within, higher education for the academic year 2024/25.

The grants are awarded to provide financial assistance in meeting educational costs, including transport costs.

The Trustees of Yorebridge Education Foundation are now inviting grant applications; applicants should provide details of their age, the educational establishment that they are to

attend, their chosen course, how they would use the grant if awarded one, plus any additional information that they consider relevant.

Students are welcome to apply this year even if they have been awarded a grant in previous years.

All applications must be received by **December 31st 2024** and should be sent electronically to The Clerk: clerkyef@outlook.com or by post to:

The Trustees Yorebridge Education Foundation c/o The Haven, Askrigg, Leyburn, North Yorkshire DL8 3HN.



HAIR, NAILS AND AESTHETICS

Aqua Facial
Micro Needling Facial
Scalp Micropigmentation
IPL Laser Treatment
Thread Vein Removal
Skin Tag Removal
Brow Microblading and Ombre
Tel Hawes 01969 667449
info@twistedah.com

Applegarth Couture www.applegarthcouture.co.uk

Made to measure
Wedding, evening and daywear,
tailoring and alterations.

**Contact: Rebecca Atkinson,
Aysgarth
01969 629398 or 07521 030870**

DALE HEAD GARAGE

Town Head, Hawes

Tel.01969 667483

Fuel Available 24/7

Your local family owned Coach Operator



COACH HOLIDAYS and FULL DAY EXCURSION PROGRAMME

Call 015242 41330 for our current brochures or visit
our website to view up and coming Holidays
and Day Trips

Email: enquiries@bibbys.co.uk
Website: www.bibbys.co.uk

D BUSHBY Joiner/Cabinet Maker

Doors, windows, staircases etc.
made to measure.

Skirtings, doors, shelves fitted and
many more odd jobs.

For a prompt and efficient service ring

**David Bushby: 01969 666048 or
07980 201579**

WANTED - SCRAP CARS AND COMMERCIALS

FREE collection from all areas.

www.scrapcarmcumbria.co.uk.

07825 293099

Wensleydale Railway Events

The Gin Train Experience - All aboard 'The Gin Train Experience!' We are pleased to announce that we will once again be hosting the Taplin and Mageean Gin Train. Enjoy a full range of their award winning Gin and Tonics from the comfort of a private carriage travelling through the spectacular Yorkshire Dales scenery on our Railway! They will run on **August 31st, September 14th and October 26th.**

For more details see - <https://wensleydale-railway.co.uk/gintrainexperience/>.

Summer Tea Train – **Sunday, August 18th at 2.30pm** - Relax and enjoy a scrumptious summer afternoon tea served on delicate vintage china with unlimited tea and coffee! Your experience will begin with a glass of prosecco upon arrival and then all you need to do is sit back and enjoy a scenic journey through the Yorkshire Dales whilst being served delicious food at your table in one of our heritage carriages!

For more details see – <https://wensleydale-railway.co.uk/summer-tea-train/>.

Polar Express 2024 - Did you miss out on tickets in 2023, or perhaps you're looking to climb back on board in 2024? Tickets are on sale now:

<https://yorkshiredalesthepolarexpressride.com>.

Tuesday Hawes Fish Market

Also door to door delivery every **Friday**. Pre-order or just turn up on a **Friday** at

Askrigg Stone Cross. **9.30am to 10.45am**
Bainbridge playground. **11.00am to 11.30am**

West Burton **12noon to 12.30pm**

Thornton Rust W.I. Hall **12.45pm to 1.00pm**

Mobile **07711 989590**

Facebook Hawesfishmarket;

Email Hawesfishmarket@gmail.com

FOR ALL YOUR SEWING NEEDS

Contact. Sheila Kearton at
Woodhall, Askrigg

Alterations and custom soft furnishings
**CURTAINS, ROMAN
BLINDS, CUSHIONS
DRESSMAKING AND
REPAIRS**



Tel **01969 663484 or 07800 576925**

Newsletter Higher Education Grant

Once again this Autumn, the Newsletter will be offering a grant of £400 to students living in the Newsletter area (as indicated on the front cover), who are about to commence higher education, following completion of their compulsory education - either the first year of a university course or practical higher education training (eg, HNC, HND, BTEC Level 4 and above, Foundation and Bachelor Degrees). Please note that this grant is only available to those in their **first year of study**.

This grant is not restricted purely to academic studies, but also includes practical courses and learning/instruction in skills which will improve opportunities for employment (such as cookery, hairdressing, beauty etc). In the past, this grant has been used by successful applicants to purchase not only text books but also laptops, sewing machines, cookery knives and beauty kit.

Applicants should apply in writing, or by email, including name, address and contact details. Please give details of the university, college or specialist training facility where studies will take place, together with details of the course/training being followed. If an application is successful, receipts will be required for the purchase of books or equipment and, once these have been received the grant will be made.

Please forward your application to the Newsletter (see address and email details on the back of the Newsletter), to be received before or during the first year of study.

O'REILLY

Chartered
Accountants

At O'Reilly's we provide a broad range of accountancy and taxation services to our clients.

Our friendly and approachable team are dedicated to delivering a high standard of service throughout the year.

We act for many individuals and businesses with different levels of complexities.

For more information visit our website at www.o-reilly.co.uk or contact us on **01969 667428** to arrange a free initial consultation.

August Wellness Walk

This month's Wellness Walk led by Jo Lade of ReFlex Orthopaedic Massage will be on **Thursday, August 15th** and will head up the slopes of the spectacular Great Shunner.

We will start at the café at Hardraw at **10.00am** following the Pennine Way up to Crag End Beacon at 626m, before dropping in to the beautiful quiet valley of Cotterdale to traverse along Bends Clints below Humesett Beacon and back towards Hardraw.

The walk is around 7.5 miles and should take around 4 hours. Booking on to the walk is essential via the Wellness Walks website. The walk is free, however donations are welcome and help us bring more Wellness Walks training and adventures to more communities.

Jo is a qualified Mountain Leader and holds Outdoor First Aid as well as Mental Health First Aid certificates so you know you will be in safe hands.



FREE QUOTES

**Carpets • Laminates • Vinyls • LVT
Solid & Engineered Wood • Accessories**

For All Of Your Flooring Needs!

NH Flooring in Richmond can fit quality flooring to any Houses, Apartments, Offices, Holiday Lets, Hotels, Pubs, Vans and anywhere else you want it.

We offer a complete flooring service including:

Supplying, Fitting, Screeding & Levelling,
Repairing, Uplift & Removals, Trimming,
Edge Whipping, Cladding and much more.

NH Flooring - Richmond

www.nhflooring.co.uk 01748 822834

Unit 6 Borough Court, Borough Road, Richmond. DL10 4SX



HAWES MARKET HALL SATURDAY 17 AUGUST

7.00 for 7.30pm

Ticket £25

Entry by Ticket only

from Wensleydale Press:

01969 667575:

lizlawson@hotmail.co.uk

No Bar ~ Bring your own drinks



touching hearts, changing lives

Leyburn
Methodist Hall

Every
Wednesday 9am,
4.30pm & 6pm

No need to book
Just come along and start your journey to a
slimmer you.

Call Helen for more info **07969 559998**

Better Health Massage

Mobile Therapist, 8am to 8pm, 7days
Improve overall general well being, inside and out.

Ruth Boddy MFHT, ITEC Dip. Massage
ruth@betterhealthmassage.co.uk

Fully qualified and insured

07773 781803

www.betterhealthmassage.co.uk



Leyburn Arts and Community Centre

Welcome to August!..... still cold, windy and spots of rain as this is being written.... has summer been and gone? Let's hope not and be positive! There is still lots going on at the Arts Centre with a variety of activities and events to look forward to.

Our regular advice, guidance and support drop in sessions will continue during the summer whilst some groups such as the dance classes do have a break and resume in September. The Staying Healthy, Independent and Connected sessions are on the **second Friday of the month from 10.00am to noon**. The Carers Plus Cuppa Club sessions are on the **first Thursday of the month, again from 10.00am – noon**.

The two recent Plant Fayres showed off the work of our talented and industrious volunteer gardeners and raised some vital funds for other projects. The gardens are in full bloom and look glorious. If you wish to become involved with the garden or the Shed do get in touch. Suitable hours and volunteer jobs can always be found to suit... and in the Centre too! Just enquire!

The Wednesday walking group has space for more walkers who wish to have a two hour

(approximately) walk in good company. No need to book, just turn up at **9.55am for a 10.00am** start. A donation of £2 goes towards our fundraising and includes freshly made coffee and biscuits on your return to the Centre.

Our big project beginning at the end of July is the Toilet Refurbishment to provide an additional disabled access toilet and will mean some short-term disruption. Funds have finally been secured and we are very pleased to be able to complete this long wished-for improvement. Raffle tickets are on sale for the Autumn Draw with some lovely themed hampers and alcohol as prizes so if you fancy a flutter please get in touch.

National Theatre Live have decided to offer encore performances of two of their most successful productions, 'Present Laughter' starring Andrew Scott and 'Prima Facie' starring Jodie Comer. If you didn't see these first time round we encourage you to try them now - you won't be disappointed, superb performances from two very talented people.

On **Saturday, August 24th at 7.30pm** we have live music from Claude Bourbon, an amazing guitar performance that includes blues, Spanish and classical stylings and takes these into uncharted territories. Andre Rieu returns on **September 1st and the 3rd, both at 2.00pm** with two screenings of his live cinema, Power of Love Maastricht concert. So, even if the weather is giving us a poor summer we have something to cheer you up!



Visitor Centre

**Kids Go Free at
weekends and school
holidays**

Enjoy our summer menus and delicious monthly specials in Calvert's

1897 Coffee Shop and Dog Friendly Garden

Coffee, cake and light bites with stunning views across the Yorkshire Dales

Yorkshire Wensleydale Cheese Experience

Daily cheesemaking demos and guided cheese pairings in our Tasting Room.
Cheese Trail Quiz. Take a peek inside the Creamery too.

Cheese and Gift Shop

Complimentary sampling and fantastic gifts
wensleydale.co.uk

STURDY TRAVEL

INDEPENDENT TRAVEL SPECIALISTS

Now at Toll House (Next to Spar)
Market Place, Hawes DL8 5QX

Also at 1, Golden Yard, Market Place,
Leyburn, DL8 5AS

For all your travel needs, home and
abroad

Call: 01677 422826

Email: robert@bakewelltravel.co.uk

Part of Bakewell Travel

ABTA No. P8596

Mystery Picture



In Last Month's Mystery Picture the gravestone can be found in Redmire churchyard. Where is this bridge and no the camera wasn't at an angle!

BARTLETT & ELECTRICALS

| Domestic Appliance Servicing |
| Installation |
| Electrical Services |
| Repairs |
| Sales |
| All makes and models |

www.BartlettElectricals.co.uk

Tel : 07920 401042

Email: Ben@BartlettElectricals.co.uk



Registered
Heating
Business



J.Parfitt Plumbing & Heating Ltd

All aspects of domestic / commercial plumbing and heating work undertaken

Phone: 01969 650665

Mobile: 07882 005261

www.parfittplumbing.co.uk

S Peacock

Woodwork and Decorating

- Fitting of skirting/architrave, doors, shelving
- Wood panelling • Bespoke Furniture
- Painting • Wallpapering

Contact Shaun on: 07794 246392

Email: shaunpeacock1983@gmail.com



**Springbank
Logs**

Seasoned Firewood Logs For Sale

Hardwood and Softwood available.
Bulk Bags, Bulk Loads and smaller bags available, also kindling bags.
Can deliver locally – Hawes Area

01969 667916 after 5.00pm

Mobile: 07974 507825

any time; P.O.A

JOHN & TED DINSDALE

Builders ~ Roofers ~ Renovations ~ Extensions

All aspects of property maintenance.

Fireplaces, Wood Burners supplied and fitted

01969 667 718 ~ 07511 424 865

MFW Aga & Boiler Services

Specialising in the servicing of Aga / Rayburn cookers and domestic oil boilers.

All Dales area covered

For service please contact Mike on:

Phone: 01609 779751 Mobile: 07731 349276

Wensleydale Concert Series

On **Saturday, August 17th** we are proud to welcome international pianist Ashley Fripp to our series at St. Andrew's Church, Aysgarth. He



will be performing a programme of music by Bach, Beethoven and Schubert. See our website www.wensleydaleconcertseries.co.uk for full details and tickets.

Ashely has performed around the world and won more than a dozen prizes in national and international competitions and garnered much praise:

Thomas Adès, composer, pianist and conductor. "Ashley Fripp is a genuine virtuoso, an astoundingly brilliant and masterly pianist, and his total grasp of the music is a joy to hear" New York Times "Disarmingly precocious" The Guardian. "played with virtuosity, nobility and the right dash of glamour"

Tickets are £18 in advance (£20 at the door), £1 for under 18s and full time students. Programmes are £1.50 and can be preordered with tickets.

Parking at the Falls Carpark (adjacent to the church) is £1.70 for concerts - bring the correct change.



Wednesday 7 August 2024

Hawes Market Hall

Entry from 7.00 pm, for
Eyes down at 7.30pm

Entry £6

Tea, coffee, with a biscuit available during
the break

**Profits to
Hawes Amateur Operatic Society**

Arena Physio and sports rehab.

physiotherapy & sports rehabilitation clinic

**Assessment, treatment and rehabilitation of
musculoskeletal pain, injury and dysfunction.**

Appointments available at:

Carperby Football Club, Carperby,
Leyburn, North Yorkshire. DL8 4DJ.

or

Darlington Mowden Park RFC
Darlington Arena, Neasham Road,
Darlington. DL2 1DL

Tel: 01325 728092 Mob: 07799767075

www.arenaphysio.co.uk



Village Pub, Restaurant and Hotel

Located in Askrigg, in the heart of Wensleydale

12 Comfortable En-Suite Bedrooms

Double & Twin Rooms

Pub & Restaurant

Great Food and Drinks

Private Car Park

Beer Garden

Main Street | Askrigg | DL8 3HG

01969 650515 | info@middlehouseaskrigg.co.uk

www.middlehouseaskrigg.co.uk



**SWALEDALE
MOUNTAIN
RESCUE
TEAM**



The team is made up of highly trained volunteers, available, 24/7 in any weather, any time of the day or night. On average we respond to between 40 to 50 calls each year. In 2023 we attended 46 incidents.

There were two Incidents between June 7th and July 8th:-

Incident 23: July 4th: Called by the Police to rescue an injured walker on the hills above Hawes. The casualty had managed to self-rescue in a barn for shelter before the July rain started. We got wet!

Incident 22: June 27th: Called by the Police along with Upper Wharfedale Fell Rescue Association (UWFRA) to assist with this search. The missing person turned up safe a couple of days later.



James Peacock SOLID FUEL MERCHANT Bainbridge

Good quality fuels at competitive prices.
Smokeless Fuel, Logs and Sticks all available.
Deliveries in Wensleydale, Swaledale and
Coverdale. No delivery too small.

James Peacock PRIVATE HIRE Bainbridge

4-8 seats, Airport runs, pubs, stations, walking
or cycling holiday, luggage transfers.....

Tel: 01969 650212 / 650465

Email: james-peacock@btconnect.com

Web: www.james-peacock.co.uk

COPY SHOP PRINTING ~ PAPER SCANNING & LAMINATING

Wensleydale Press

Burtersett Road, Hawes 01969 667575
wpress@tiscali.co.uk

UPPER DALES HOME CARE



Home care services are specifically designed to provide assistance with daily living activities in the comfort of an individual's home.



OUR SERVICES



Help at Home
includes:

Cleaning
Laundry
Light Chores
Meal Prep



Company &
Support:

Companionship
either in person
or by phone



Carers' Break
Sitting Services:

Support for those
caring for loved
ones



CONTACT US
01969 667400
or 07817 711227



VISIT OUR WEBSITE
www.udcp.co.uk



Yore Mill
CRAFT SHOP & GALLERY

We have a wide selection of artists and makers from Yorkshire and across the North of England overlooking the beautiful Aysgarth Falls.

Check our website for further details and opening hours.

Yore Mill, Aysgarth DL8 3SR

Web: yoremillcraftshopandgallery.co.uk
01969-662829

Cumbria Stove Centre

Supply and installation of wood,
coal and gas stoves.

- ◆ Flue and chimney lining services.
- ◆ Inglenook specialists.
- ◆ Fully qualified and experienced Hetas engineers

01539 821061 (day) - 01539 625227 (eve)
SHOWROOM: 34a, Main Street, Staveley

**AUGUST WHATS ON LISTING;
please add these dates to your Diary**

August

- 2 Dominoes. Carperby Institute. 7.30pm.
- 6 Coffee and Cake. West Burton Chapel. 10.00am - Noon. See p.12.
- 7 Kings Club, Hawes. 11.00am. See p.3.
- 7 Bingo. Hawes Market Hall. 7.00pm. See p.18.
- 15 Wellness Walk. Hardraw. See p.15.
- 15 Bainbridge W.I. Meeting and talk. See p.39.
- 16 Talk. Leyburn u3a. LACC. 10.00am. See p.26.
- 17 Hawes Mobile Recycling Collection. 9.00am to 1.00pm. See p.4.
- 17 Queen Tribute Concert. Hawes Market Hall. 7.00pm. See p.15.
- 17 Concert. St. Andrew's Church. See p.18.
- 18 Service at Hawes Junction Chapel. 2.30pm. See p.39.
- 21 Penhill Ladies. Circle Dancing. 7.30pm. Carperby Village Hall. See p.35.
- 23-25 West Witton Feast Week. See p.8.
- 25 Askrigg Produce Show. 2.30pm. See p.23.
- 27 Bingo. Stalling Busk Schoolroom. 7.00pm. All welcome.
- 31 Charity Coffee Morning. Thornton Rust. 11.00am. See p.11.

September

- 1 Moorcock Show, Mossdale Farm. From 10.30am. See p.33.
- 4 Muker Show. From 10.00am.
- 4 Bingo. Hawes Market Hall for Dalesplay. 7.00pm for 7.30pm. See p.29.

D MOORE & M BLACKHURST



GENERAL
MAINTENANCE

BUILDERS

*All types of building work undertaken
25 years' experience ~ Free Estimates*

07772 284602 ~ 07975 897715

3 Woodburn, Hawes. 01969 667505



HUNTON STEAM GATHERING

7th & 8th September 2024

VINTAGE, CRAFT & HERITAGE FAIR

WENSLEYDALE, NORTH YORKSHIRE, DL8 1QF

- Vintage and Classic Vehicles
- Fair Organs, Steam Gallopers, Vintage Fairground Rides
- Steam Ploughing & Vintage Working Demonstrations
- Craft, Food, Trade & Automobile Stalls
- Falconry Displays & Arena Attractions
- Situated on a 70 acre rural site in Lower Wensleydale

CARAVAN & CAMPING | BAR & CATERING | FREE PARKING

ADULTS: £10 | CHILDREN: £5 (UNDER 5 FREE)

WWW.HUNTONSTEAMGATHERING.CO.UK

Bainbridge Vets Ltd

A comprehensive, friendly veterinary service treating animals large and small

24 hour emergency service.

Open Surgery

Monday-Friday 9.00-9.30am and 2.00- 2.30pm
Saturday morning 9.00-9.30am
(appointments available at other times)

01969 650263

Hawes Countrystore




"For All The Farmers Needs"

Not Just All Your Agricultural Supplies!

Country clothing, work ware & footwear.

**Pet, equine, poultry, wild bird feed,
garden supplies and household goods!**

Call in & see for yourself!

Tel- 01969 667 334 Fax- 01969 667 335

Monday - Friday 8am - 5pm Saturday 9am - Noon

CBAL Fuels- 01524 599 333
Head Office (Carlisle)- 01228 552 650

Hawes @carrs-billington.com
www.carrs-billington.com Follow us




Rainfall Figures for first six months of 2024 (in mm)

	January	February	March	April	May	June	Total for half year
Hawes	290	156	159	142	111	73	931
Breconbar	243	111	111	121	132	57	780
Thornton Rust	234	124	138	114	120	73	803
West Burton	225	107	127	117	83	50	709
Carperby	188	86	90	99	92	52	607

The average rainfall for the first six months of 2024 over our five locations was 766 mm. This compares with previous totals of

2023 517mm.

2022 516mm.

2021 714mm.

So a very wet six months!!

**Gardener urgently needed
to restore neglected Bainbridge
garden to manageable state.
Maintenance help would be
appreciated.**

**Liz Burrage, Swiss Cottage, The
Newkin, Bainbridge**

Tel.No.01969 650726

SANDERSON & CO.

"Decorating Supplies"

**DULUX COLOUR
ADVICE CENTRE**

Scanner Colour
Matching & Paint Mixing



Stockist of Leading Brands including,
**Dulux, Crown, Leyland,
Ronseal, Cuprinol**

Extensive Wallpaper Pattern Library
Trade & Quantity Discounts Available

**High Street, Leyburn DL8 5AQ
01969 623143**

Email: sandersonandcoleyburn@gmail.com

Also CALOR & Camping Gaz stockist

Mobile heaters and accessories

Free local delivery



EDGLEY GARAGE



Edgley Garage, Aysgarth,
Leyburn, North Yorkshire,
DL8 3AD

01969 663094

edgleygarage@yahoo.com

MOT testing; Full servicing;

Air conditioning service;

Brakes, clutches and all

general repairs to vehicles.

Hawes School News

Sports Day

We were able to complete our annual Sports Day for this year, despite the weather. The morning was excellent with teams from across the school working on a series of sporting activities. It was great to see the support from the older children to the youngest members of our school family. In the afternoon we held our races with the parents, carers and wider school community. It was great to see so many attending this year even with the weather conditions. We would like to thank Mr. B for his super organisation of the day and well done to our champions for this year: FELL House.

York Residential

Our KS2 children were able to visit York on a residential as part of their learning at the start of July. This was very much demonstrating our school vision of taking learning to other places

and all our curriculum drivers of adventure, wellbeing, community and knowledge of the world! Their time away has contributed lots to our pupils' personal development, providing opportunities to build up confidence, friendships and teamwork skills, as well as experience life and culture in a big city and provide a wealth of learning for this term's History and Geography units. A huge thanks to Hawes Tolls Trustees, and Hawes School PTFA who very generously gave a substantial donation to subsidise the cost to parents.

Class 1 Church visit

All children in Class 1 visited St Margaret's Church as part of their RE learning. We were able to explore and find out about the different parts of the church and listen to the wonderful organ music being played. All the children had the chance to ring the church bells. Thank you to Rev Dave for welcoming us to Church and showing us around.

AYSGARTH
FALLS
HOTEL



Now serving Afternoon Tea by advanced booking
Wednesday - Saturday 12pm - 4pm



Food served daily from 12pm

www.aysgarthfallsotel.com
01969 663775



Orthopaedic Massage

Back and neck pain, strains and sprains
Nerve injuries, sciatica, chronic pain
Robust Covid-Secure procedures in place
Clinic in Hawes

H & M

CRAFTSMEN
Ingleton | Est. 1987

KITCHENS · BEDROOMS · STUDIES

High Quality, Bespoke Furniture With
Full Design And Fitting Service



Showroom: Ingleton Industrial Estate, LA6 3NU
015242 41535 · kitchensandbedrooms.co.uk

Mike Addison Optician

Market Street, Kirkby Stephen,

017683 71555

Email : info@mikeaddisonoptician.com

- Providing eye care for all the family
 - Private & NHS patients welcome
 - Children & over 60's receive free eye examinations
 - Supplier of all spectacle & vision related products
- or The Shire Hall, Appleby, 017683 53199



Mike Addison FRCO C.
OPTICIAN

76th Produce Show

Sunday, August 25th - 2.30pm

As we enter a busy month for all at Askrigg and District Produce Show HQ, it has a feeling of Groundhog Day about it. The show has changed subtly over the years but it is still very much like it has been for decades. I suppose that is a big part of what we love about this small village show; it has a lot of the same elements that were present from just after the war when life was perhaps less complicated and the growing of produce and flowers along with other crafts were an important part of everyday life for people in the Dales. With no internet or television and travel more of a rarity, village events held a real sense of importance and excitement. Judging by the peppering of Lords and Ladies that were involved with the show even as recently as the 1960's, our Show was clearly a prestigious event.

I recently noticed that, in the middle of Askrigg, there is a bench dedicated to a previous 'President' of the Produce Association and I wondered how many more decades I would need to continue as Chairperson before I could be promoted to President and then have a bench dedicated to me? I suspect that the days of such things are long gone so I won't be anticipating any permanent markers of my time. I would be happier if, when I'm in my 90s and am finally allowed to retire from the role, the Show is still a success and people are still enjoying visiting what is a lovely event full of nostalgic delight. Dare I hope that people might even still get excited about entering something in the show with the anticipation of winning a prize?

With this in mind, I would like to invite anyone, either local or visitor, to get involved. If you have vegetables or flowers growing in your garden have a look to see if there is a suitable category in the schedule or at www.askriggproduceshow.weebly.com. Or why not have a go at baking, drawing, painting, photographing or making something? It is easy to enter, and we have made the categories as broad and varied as possible. Children from local schools, Cubs and Beavers have been busy making some entries for the show but we always love to have a full show bench with children's

entries so, on these damp and breezy days we are having, why not keep your children busy doing some craftwork for the show?

We are also always keen to welcome volunteers who might bake some cakes for the teas, help with setting up and clearing the hall, assist judges and one of many other things that need doing on show day. Do call if you can help.

Mike Dechezeaux

Chairman – Askrigg and District Produce Association

Tel: 01969 650424

Email: mcvmad@yahoo.co.uk.



**A personal friendly service for
'all creatures great and small'**

- Small animal consultations, diagnostics, and surgery
- Budget friendly preventative health care plans for dogs, cats, and horses
- Farm Animal routine work
- Ambulatory equine services
- In-house 24-hour emergency service for small animal, farm, and equine

01969 422201

**www.wensleydale-vets.com
info@wensleydale-vets.com**

**MICHAEL MOORE and SON
BUILDER AND PLASTERER
Family Business Est 1906**

Alterations, pointing, stonework,
Roof work, garden patios, paths,
plastering, insulated plaster
boarding,
Over-skimming Artex walls and
ceilings, tiling walls and floors,
underfloor heating, PVC sash
windows.

**Tel: 01969 667045
Mob: 07968 684942**

Hawes DL8 3NS

News from Dales Countryside Museum

Opening times. Daily **10.00am to 5.00pm**. February to October, **10.00am to 4.00pm** November and December. Closed Christmas Eve to Boxing Day and **January 6th to 31st, 2025**.

Last entry one hour before closing. Contact. hawes@yorkshiredales.org.uk or call **01969 666210**.

Labour of Love Exhibition – till September 8th.

“A fantastic insight in a way of life – tough, rewarding, enduring like its people”. This is just one of the many comments we’ve received about our current exhibition, ‘Labour of Love - Land, lives and nature in England’s Upland Commons’.

As part of the nationwide Our Upland Commons project led by the Foundation for Common Land, Rob and Harriet Fraser have spent time in these special parts of England meeting people who are passionately committed to a positive future;- farmers, landowners, conservationists, heritage specialists, ecologists, scientists and others.

The exhibition offers a glimpse into the online collection of 'Commons Stories' with insights into farming, wildlife and conservation, and perspectives on how to move forward collectively to protect and enhance the landscape and its communities.

Yorkshire Dales Young Archaeologists' Club.

In July our trip to Gauber near Ribbleshead was unfortunately cancelled due to bad weather, so David Johnson, the dig leader, very kindly came to the Museum instead. We had a great session looking at finds from the site that we hold here at the Museum. David also brought along a few very special finds from his own collection and we had some great suggestions for what some of these could be!

The club meets once a month on a Saturday morning, **10.00am to noon**. Please call **01969 666210** if you'd like to join in or email dcym@yorkshiredales.org.uk. Young people age 8 – 17 years are welcome to come along to try a session from September onwards.

Family welcome corner.

We've been working hard to make the museum

more family friendly over the last year or so. We've created our family mascot, Cyril the squirrel and trialled age related activities and developed resources for families with special needs or disabilities. Having made tweaks and changes, our new family welcome corner featuring Cyril is up and running! Cyril the squirrel features throughout the Museum helping signpost children to all the age related activities.

He's also the **Scurry club** mascot. If you'd like your child to be able to visit all year round, why not think about a Scurry Club Pass? Your child and an accompanying adult carer can visit all year round and kids can start collecting their squirrel badge and first stamp as soon as they visit. Our colourful mini museum on the railway carriages is coming along, so we'll have lots of fun for little ones when they visit.

Education and community engagement.

It was another busy two days this year at Countryside Days with the Yorkshire Agricultural Society. Jane and our volunteer team engaged with 295 children exploring the theme of Common Land to link with our exhibition. Pupils printed their own common land pictures for school, featuring the people, animals and wildlife that live and work in these precious landscapes.

Our loan boxes are getting booked out quickly for the next school year, so if you'd like your class to be able to explore real objects in the classroom, do get in touch.

If you're involved with a Youth group and you think your young people would be interested in getting involved in a project with the Museum, please get in touch. We're keen to link up with groups to explore themes around Green Spaces – Shared places through a project supported by Art Fund. If you're passionate about things like the countryside, the Yorkshire Dales or climate change and would like your voice to be heard we'd love to hear from you.

Volunteers.

Our amazing volunteer team have been busy out on the trail, creating new features, trimming shrubs, pulling nettles, sanding and painting benches. Indoors, things have been just as busy with hundreds of photos being scanned, research enquiries answered, objects catalogued and photographed, and surveys carried out. If you'd like to get involved, do get in touch via dcym@yorkshiredales.org.uk.

Here are the DCM events coming up in August.

Family Craft Activity.

Thursday, August 1st, 1.00pm - 4.00pm.

Butterflies and flowers printing. Slot allocated on arrival.

Hands on History – Finds.

Friday, August 2nd, 1.00pm - 4.00pm.

A chance to handle real finds from archaeological sites - what were they used for and what can they tell us about the past. Drop in session.

Dry stone walling demonstration.

Tuesday, August 6th, 11.00am - 3.00pm.

Drop in and discover more about these iconic features in the landscape.

Hawes Rural Heritage walk.

Tuesday, August 6th, 11.00am - 4.00pm.

Come along on this 5.5 miles walk in Herriot country and enjoy panoramic views over Upper Wensleydale. Barns, walls and bridges are important features of Wensleydale and played a crucial part in the development of local industry and agriculture. The walk includes the woodland and waterfalls of Shaw Gill. £10 - Booking Essential. No dogs allowed.

Rivers Trust Roadshow.

Wednesday, August 7th, 11.00am - 3.00pm.

The Rivers2U mobile classroom will be parked outside the museum entrance. Come along and meet staff from the Yorkshire Dales Rivers Trust to find out about rivers and their wildlife. Discover how rivers form, and identify the amazing freshwater invertebrates which live in our rivers.

Family Craft Activity.

Thursday, August 8th, 1.00pm - 4.00pm.

Printing flowers on the Common. Slot allocated on arrival.

Hands on History - Medieval tiles.

Friday, August 9th, 1.00pm - 4.00pm.

How were tiles made? Come and find out and make one of your own! Drop in session.

Dry stone walling demonstration.

Tuesday, August 13th, 11.00am - 3.00pm.

Drop in and discover more about these iconic features in the landscape.

How the Dales were made – geology.

Tuesday, August 13th, 11.00am - 3.00pm.

A 5 mile walk. £10 plus entrance fee to waterfall. Booking essential.

Family Activity.

Thursday, August 15th, 1.00pm - 4.00pm.

Printing birds on the Common. Slot allocated on arrival.

Hands on History - Making rope.

Friday, August 16th, 1.00pm - 4.00pm.

Find out how rope was made and have a go making your own. Drop in session.

Barns, walls and bridges walk.

Sunday, August 18th, 1.30pm - 4.00pm.

A 4 mile walk. £6 - Booking essential.

Dry stone walling demonstration.

Tuesday, August 20th, 11.00am - 3.00pm.

Drop in and discover more about these iconic features in the landscape.

Family Activity.

Thursday, August 22nd, 1.00pm - 4.00pm.

Come along and make your own recycled creature! Slot allocated on arrival.

Hands on History - Animal bones.

Friday, August 23rd, 1.00pm - 4.00pm.

See and handle Roman animal bones from Archaeological sites - what can they tell us about the past? Drop in session.

Dry stone walling demonstration.

Tuesday, August 17th, 11.00am - 3.00pm.

Drop in and discover more about these iconic features in the landscape.

Hawes Town Trail.

Tuesday, August 27th, 2.00pm - 4.00pm.

A 2.5 mile walk. £5 - Booking essential.

Family Activity.

Thursday, August 29th, 1.00pm - 4.00pm.

Painting pebbles. Slot allocated on arrival.

Hands on History – Magnets.

Friday, August 30th, 1.00pm - 4.00pm.

Magnets in archaeology - how they can help us find and date sites. Drop in session.

Hardraw Church Event

An uplifting musical evening

Please join us in Hardraw Church on **Saturday, September 14th at 6.30pm** for a varied musical evening featuring Dave and Sarah Clark, Irene Whaley and Andy Souter and Askrigg Ladies who sing for pleasure. Refreshments available. Entry free of charge, but any donations will be greatly appreciated and will be added to our ongoing Organ restoration fund.



Stone House Hotel

.Summer is finally here! And there's no better place to soak up the sun than in our beautiful country garden - where you can sit back, relax, and take in the stunning views over Wensleydale.

Join us for lunch from our very popular summer lunch menu, or a refreshing drink – perhaps a local beer, a delicious English wine, a Yorkshire G and T, or one of our fantastic summer cocktails? And we have plenty of great non-alcoholic options to choose from too!

Our summer lunch menu is served between
12.00 - 2.30pm.

We look forward to seeing you soon!

*Booking is advised – email

reception@stonehousehotel.co.uk

or call 01969 667571



Family run Teashop situated next to the magnificent Aysgarth Falls

Light Lunches ~ Soup & Sandwiches ~ Afternoon Teas

Cakes, Scones, Biscuits & Traybakes

Muddy Boots & Dogs Welcome ~ Card Payments Accepted

01969 663446

J. W. COCKETT and SON

Family Butchers

Estd. 1854

Wholesale and Retail Bakers

Main Street, Hawes

Tel 01969 667251

Best Quality Meats

High Class Baking

Freezer Orders Supplied

Leyburn and District u3a

Teeth, Trees and Totem Poles

This month's talk on **Friday, August 16th** is a travelogue. Martin Curzan will describe his life as a backwoods itinerant dentist in British Columbia and his experiences of working in the backwoods communities of Canadian remote villages and indigenous peoples.

It records a time when dental services for many isolated villages of Canada were provided by young, recently graduated dentists. Children aged three to nine years-of-age had to be made dentally fit. In all, 24 communities from Vancouver Island to the Yukon border were visited and over 1,500 children including many from the First Nation tribes were cared for.

The talk is based on Martin's diary kept together with letters home, recording his experiences and development as a pediatric dentist, which is a world in which Emeritus Professor Martin Curzan needs no introduction. After years working in Canada he moved to Leeds in 1968 where he was appointed Professor of Child Dental Health.

Doors open at **10.00am for 10.30am** at Leyburn Arts and Community Centre, Richmond Road, Leyburn DL8 5DL. Visitors and new members are always welcome. Annual membership is £12 or £20 for two people at the same address. For details contact **Sue Mellish** on **01748 850471**; email: susiemellish148@g.mail.com.

≈8,000 residential properties
are at risk of flooding in
the SUNO* catchment.

We're working to change that. Chat
to see how this will impact you.



Scan HERE
or text hello ousewem 13
to 07700 137 717



OUSEWEM

Rising Waters | Rooted Solutions

*The river catchments of the Swale, Ure and Nidd merge upstream of the City of York to create the River Ouse (SUNO catchment).

All messages are anonymous. Standard messaging rates apply. For more information visit: <http://city/privacy-policy>

Sycamore Hall News

I don't really know where to start with this - we are just so disappointed by the poor summer weather this year. We are trying to be positive that things may improve but there have been so few opportunities to get outside in the sunshine.

Despite this, our keen gardeners are still doing more than their 'bit' to tend our vegetable crop as well as our beds and borders. Needless to say, there hasn't been much need for a lot of watering, which is just as well as that is exhausting. Fingers crossed that all the hard work pays off and we can get to enjoy our outside environment before winter arrives. If you would like to come along and help out in our gardens, please call in as we welcome eager volunteers.

We are delighted to have Ron back with his Tuesday quiz and thank Brian for stepping in during his absence. Bingo continues to be popular but just by way of a change we are now looking at holding a domino drive - watch out for details soon.

August will see us celebrate Housing 21's 60th birthday with an Afternoon Tea for our residents and some entertainment to enjoy along with the tea and cake.

We are also anticipating another 'mini-Olympics' event which is apparently being planned so perhaps we should be preparing with some exercising to hone our skills. Fingers crossed it will be a nice day and we can participate outside, but we won't hold our breath.

As I write this, we are looking forward to a visit by Jane from the Dales Countryside Museum who will be doing a butter-making demonstration - we can't wait for that.

We launched our new Gents Club at the beginning of July and were thrilled that some men actually turned up. We have taken on board their feedback and are hoping to develop this new activity over the next few months. So, if you are a man and fancy trying out this new activity, do come along to join the men of Sycamore Hall on the **second Monday of each month** - note the changed day) from **2.00pm**. There will be opportunities to chat, play games, read etc - and refreshments will be available. The cost is just £3 to non-residents of Sycamore Hall.

The Gents Club is on at the same time as the

'Knit and Natter' which our ladies enjoy in the lounge so if you are a couple, why don't you both come along? It is not a requirement to knit - but it is a requirement to natter. Everyone is welcome and you are sure to meet someone you know.

Do come along and join some of our regular activities which include:-

Weekly Events

Mondays at 2.00pm	Knit and Natter
Tuesdays at 10.30am	Ron's Quiz or Karen's Bingo
Thursdays at 10.30am	Coffee Morning
Fridays at 11.00am	Gentle Seated Exercise

Monthly Events

2nd Monday	Gents Club
1st Friday at 10.00am	Short Holy Communion service with Revd Dave Clarke
Last Sunday 10.45am	Methodist Service.

Our small businesses (Sycamore Restaurant, Sonja's Hair Salon with Mabel and Maisy's Mini Emporium and Sycamore Country Store) are ready to welcome you and offer some wonderful facilities right on our doorstep. The Post Office is also here on **Mondays and Wednesdays between 9.00am and 11.00am** for your postal and banking needs and the Library is available all day with internet access.

If you have any queries or would like to discuss the availability of apartments, please contact the Manager, **Nicky Cooper, on 0370 192 4055.**

WCF Fuels North West



**Red Diesel · White Diesel · Kerosene
AdBlue · IHO · Agamax · Lubricants
Additives · Fuel Cards · Tank Monitors**

Order online at www.wcfnw.co.uk
Email us at: enquires@wcfnw.co.uk
or call our friendly team on **01524 733669**



Yorebridge Sport and Leisure Centre

At Yorebridge Sport and Leisure, Askrigg, we are committed to improving quality of life through healthy lifestyles. To support this commitment, we have a wonderful team of volunteer Directors and three part time staff.

Jan and Gemma share our Centre Manager role, covering the development of the centre, building compliance, customer relations and funding.

Kirsten is our fitness and lifestyle coach, delivering one to ones and classes to support a range of needs. Kirsten is a qualified PE teacher with a BA in Sports Studies. Kirsten has coached sport for over 35 years and is passionate about helping everyone to be active.

In addition to our weekly classes, we also offer specialist one to ones. We have picked a few of Kirsten's specialist qualifications to highlight below:

The Wright Foundation Referral Consultant Qualification **Level 3 Diploma in Exercise Referral**. Kirsten is qualified to design and delivering a structured and tailored physical activity programme for the referred patient. Using a range of skills to assign appropriate physical activity, knowledge of the referral process; and of medical conditions, Kirsten understands the disease process and how it is managed, how physical activity influences the medical conditions, and the benefits and risks of exercise. If required, referral back to the medical practitioner will occur.

Level 4 Specialist Qualification in Obesity and Diabetes. Designing, delivering and reviewing a physical activity programme for clients.

Level 4 Specialist Qualification in Cancer Rehabilitation. Kirsten can deliver, review and adapt a physical activity programme for clients recovering from cancer and its treatments.

Later Life Training, **Specialist Postural Stability Instructor** (Level 3). Exercise for the Prevention of Falls in Frailer Older People.

Diploma in **Therapeutic Coaching for Women**. Qualification in women's wellness; female mental health and mental distress through the lifespan.

Nordic Walking UK Exercise for Parkinsons.

Level 2 Award in Chair Based Exercise for the Frailer Older Person.

Please don't hesitate to get in touch if you would like to have a confidential conversation about how Yorebridge Sport and Leisure could support you. Ring **01969 650060** or go to admin@yorebridge-sport.co.uk.

We also have a range of gym memberships to suit different needs.

Calling Local Accommodation Providers

Northern's Yorkshire Dales Explorer (YDE) train service began on June 8th. It is a through train (no changes), running on Saturdays (only), from Rochdale to Ribbleshead via Hellifield. The train calls at 17 other stations, including Clitheroe, Blackburn, Darwen, Bolton and Manchester Victoria, so it offers multiple journey opportunities for a day out in Lancashire (from Ribbleshead) or vice versa.

The YDE train turns round at Ribbleshead before beginning the return journey back to Rochdale. As it makes two return journeys from Rochdale to Ribbleshead every Saturday, this makes a day out in either direction feasible.

What a chance for hotels, B&Bs and holiday cottage owners to promote seven day Saturday to Saturday holidays in Hawes and Garsdale from Greater Manchester and East Lancashire without visitors having to drive here! Perhaps also offering the incentive to potential visitors of a special booking discount - to visitors who come by train to Garsdale station?

YOREBRIDGE HOUSE



Restaurant with Rooms

Bar & Lounges
open daily

Afternoon Tea & Light Bites
served daily 12-3pm

A la Carte & Tasting Menu
served Mon-Sat 6-8pm

Sunday Lunch
served Sundays 12-4pm

01969 652060
enquiries@yorebridgehouse.co.uk
Bainbridge, North Yorkshire, DL8 3EE



The children attending Dalesplay have enjoyed watching Hawes Primary school sports day. They joined in with a running race and cheered for their friends taking part in the different races.

The Ducklings' room has transformed into a carnival enjoying the small world circus role play, learning new tricks and dressing up as clowns. In the Sunshines' room we have been learning about visiting the doctors and dentist. Our role play area has been enjoyed by all. The children took it in turns to be the patient and doctor. They dressed up for their roles and learnt the names of the different pieces of equipment that the doctor and dentist use to check on our health. We have been talking about the foods that are good for our bodies and what we need to do to keep ourselves healthy.

We have Bingo in the Market Hall on **Wednesday, September 4th at 7.00pm for a 7.30 start.** We hope lots of you can come along and enjoy playing.

We currently have places available for children aged nine months upwards from September. Please get in touch early to prevent disappointment; www.dalesplay.co.uk. We have paid sessions and the government funded places available for working families and those in receipt of benefits. To find out more and if you are eligible for a funded place just visit www.childcarechoices.gov.uk.

PENNINE PRINT



Full Colour Print
Invites - Tickets
Brochures - Leaflets
Menus
all at affordable Prices

simon@pennineprint.co.uk

Tel: 07860 620 411

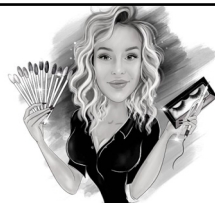
Bear Cottage Interiors

Curtains and Blinds,
Fabric and Interiors
Market Place Hawes

01969 666077

Email julie@bearcottageinteriors.co.uk

Website www.bearcottageinteriors.co.uk



The Parlour
HAWES

Nails • Lashes • HD Brows • Aesthetics
• Microblading • Teeth Whitening

07794331509



Scan the QR code
to book



Sycamore Country Store

Now Open Inside Sycamore Hall

OPENING HOURS:

MONDAY TO FRIDAY. 9.00 am to 1.00 pm

Selling a wide range of everyday essentials,
including dairy products, fruit & veg, bread,
cakes & savouries, sandwiches and sweets

WENSLEYDALE TREE and HORTICULTURAL SERVICES (Est. 1995)

DAVID ALLEN (HND Arboriculture)

CHARLIE ALLEN (BSc Arboriculture)

Fully insured (£5million) professional tree work:
felling, crown thinning etc.

Petrol log splitter and woodchipper for hire.

Tree stump removal.

Hedge establishment and maintenance.

Supply/ planting of forest/ ornamental trees.

Fire tree maintenance. Weed control services.

treesinhawes@gmail.com

01969 667364 or 07811 576108

Groundbreaking App Unveiled to Reduce Woodland Plastic

A new app has been launched that will map the location of plastic tree guards in a nationwide first.

The free app, 'Plot that Plastic', is a citizen science project aimed at building a UK-wide map of where old and new plastic tree shelters are located in the environment. This data can then be shared and used to help facilitate their future removal and locations of recycling hubs across the country.

The app was developed by Forestry Commission Woodland Officer Katie Goldsbrough, on behalf of the Forest Plastics Working Group, a conglomerate of organisations working in the forestry sector, in response to growing concerns over woodland plastic pollution. Members include the Forestry Commission, Essex Forestry Initiative, Essex Wildlife Trust, and Yorkshire Dales Millennium Trust.

People can download the Survey 123 app to their phone or access it via their desktop, where they will be able to easily record the location of the tree shelters, their condition and other indicators that will help with the mapping process. People can find out more by visiting the Forest Plastics Working Group website <https://bit.ly/plotplastic> and get plotting that plastic!

This app has been years in the making according to Katie Goldsbrough: "I am very excited for this project to finally launch," she said. "As a citizen science project, everyone and anyone can get involved. This will hopefully allow the project to get a wide-ranging data set of where plastic tree guards and shelters are in the environment. I hope that it can make a difference to the forestry sector and that we can eventually stop plastic tree guards and shelters from adding to the wider environmental issue of plastic pollution entirely."

Sykes House in Askrigg
Grocery Shop and B&B
Shop Open 7 days a week

Enquire for
B&B bookings at
www.sykeshouse.co.uk
01969 650535

Mike Appleton, Woodland Officer at Yorkshire Dales Millennium Trust, added: "The Plot that Plastic app is an exciting new phase in our mission to remove and recycle woodland plastic. Alongside Tubex we have already established recycling hubs across the country and last year successfully removed 350,000 tree shelters to be recycled. The app will enable us to expand the operation by establishing new recycling hubs and supporting landowners and woodland managers in removing unwanted plastic. We encourage everyone who spends time in the countryside to download the app and help us plot that plastic!" People can find out more here: www.forestplasticsworkinggroup.co.uk.

CHAPEL GALLERY

Work on display from local artists
and crafters

Coffee and cakes

Dogs and children welcome

Open daily (except Sundays)
11am to 4pm

Burtersett Road, Hawes, DL8 3NP

Tel: 07474 138536

info@chapelgalleryhawes.com

www.chapelgalleryhawes.com



Robin Jessop

Free Market Appraisals

For Selling & Letting Rural Property.
Specialists in Selling by Auction.

Market Valuations for Tax Planning,
Lending, Compensation and Council Tax
purposes

Marwood House, Railway Street, Leyburn
Tel: 622800

The Iron Maiden

*Not enough hours in the day?
Fed up of never ending ironing?*

My ironing service is definitely a way of
buying back much needed quality time in a
busy life!

Tracy Hume

07527 796523 or 01969 666048.

Can arrange collection/delivery



Wensleydale Craft Fairs

Quality crafts by local and regional
makers

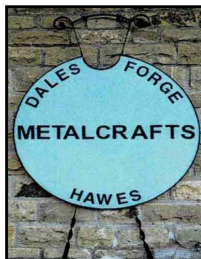
at the Market House, Hawes

10 - 11 August

24 - 26 August

www.wensleyfairs.co.uk

Tel: 07857 439450



Dales Forge

Metalcrafts

Tel: 07729 105466

Unit 5, Raynes Court

Hawes, North Yorks.

dalesforge@btinternet.com



Swan Farm, Redmire,
Leyburn DL8 4HA

01969 625647

castletimberbuildings@mail.com

castletimberbuildings.com

All of our products are hand made to order,
from the smallest of sheds to the more
elaborate designed summer houses. Our
team of experienced joiners and specialists
are on hand to advise and guide you, to
help get the most of your product.

We aim to deliver the highest quality
buildings, tailor-made to your requirements
using only the finest quality timber and
ethically sourced. You can be reassured
that we also care for the environment.

Charity Bingo Report

Our latest bingo night was held in Hawes Market Hall on Wednesday, July 10th, with the night's profits going to Hawes Christmas Lights. We welcomed familiar faces and new, from Hawes and surrounding villages and some from as far away as Dorset and Australia who were visiting in Hawes at the time.

It was great to see so many come out to play and support us even though the England football match was played on the same night.

A warm welcome, a good line up of prizes, a generous hamper for the raffle provided by Yorkshire Tea, teamed with the playing of a few games of bingo provided an enjoyable social evening for all. The smaller number of players provided the added benefit that most players went home with one or more prizes. Thank you to everyone who has come out and supported our bingo evening, in spite of, or despite, the football on the night. £90 was raised for the Hawes Christmas Lights.

Our next bingo night will be in Hawes Market Hall on **Wednesday, August 7th** with profits to Hawes Amateur Operatic Society. Everyone is invited to come along and join in the fun.

We now have a monthly schedule of Bingo nights through to December, excluding October, and are in the planning stages for next year. Please see the posters around Hawes and neighbouring villages for details. If your group would like to receive the profits from a future Bingo night, please call **Jan on 07736 017459**.

THE HEALING COLLECTIVE

Encouraging health and well being
with a range of therapies.

Therapies for animals also available.

Coach House, Berry's Farm Shop & Café,
Swinithwaite, DL8 4UH. t.0845 474 2383

info@healingcollective.co.uk
www.healingcollective.co.uk



BAWB have certainly had a jam-packed July! Our KS2 in particular have been busy bees with our Y3/4 residential to Marrick Priory, and our Y6 residential to Humphrey Head – when asked what was their most memorable part of the trip, many of the children seemed to comment on how excellent their 3-course evening meal was!

We had a wonderful final celebration assembly at West Burton Village Hall, which provided a welcome opportunity to highlight our children's achievements, as well as saying a fond farewell to some of our fantastic members of staff, who we will miss dearly. Our singing club showcased their beautiful voices, and certainly impressed the audience with their rendition of 'The Lion Sleeps Tonight'. On their last taught day at West Burton, the Y2/3s had a party lunch provided by Mrs Chapman – her lunches are legendary, and we left school that day with full tummies and hearts!

We had a busy final week, getting the schools ship-shape ready to come back in September, with the children getting stuck in with helping! On our final Friday of the academic year we said goodbye to our fabulous Y6 Leavers, with an assembly attended by our MP, Rishi Sunak. The assembly was a beautiful tribute to our pupils, and was followed by a wonderful Leavers' Fair organised by the Y6 pupils and their families – the slip and slide was a huge hit, as were the delicious hotdogs! A huge thank you to all those who made it possible.



BAWB Y6 Leavers with Rishi Sunak

Remember that on our Newsflash - www.b-a-wb.com - we have information about local summer clubs taking place, including Forest Skills, Yoga, Sports and Science! See you all in September, we hope you have a wonderful summer.



Blueboxt – August Update

Activity Afternoons

Join the BlueBoxt team for an afternoon of creative fun for ages from four to fourteen years old. We'll be offering a selection of indoor and outdoor activities at Thornborough Hall, Leyburn including Crafty Crafts, Scavenger Squad, Melody Makers, Team Players and Stage Stars. Our Culinary Cadets will be helping us to explore and create nutritious snacks too. Sessions run **1.00pm to 5.00pm on Tuesdays, August 6th, 13th and 20th** and cost £24 per person, per session which includes healthy snacks and tea time meal. Places can be booked at www.wensleydale.org or phone **01969 745810** or **07711 211169**.

Last month we announced that we are being supported by North Yorkshire Together to provide free places to attend as part of the FEAST programme. These were booked in a matter of days so we have set up a waiting list at www.holidayactivities.com.

Strawberry Teas

Our next event is the popular Strawberry Teas on the lawns of Thornborough Hall which takes place on **Sunday, August 4th from 2.00pm**. (If the weather is unkind, we will be in the Oak room.) Hot drinks and Pimms will be available. There will be live music from Leyburn Jazz Collective. Bookings advisable.

Mystic Motion Dance Collective – open audition call.

We have a special family show in production for **February 2025** and are inviting dancers to audition to be part of the Mystic Motion Dance Collective. As a guide – you should be a minimum age of 10 years by December 31st. There is no upper age limit. Simply send us a video telling us your name, contact details, your interests and a short performance of the different dance styles which inspire you to www.blueboxt.wetransfer.com or email to info@blueboxt.org.

You can call or text our box office and enquiry line on **01969 745810**, email info@blueboxt.org or www.wensleydale.org or www.leyburnjazz.org or www.blueboxt.org.

Moorcock Show 2024

This year's show will take place on **Sunday, September 1st from 10.30am**, at the show ground at Mossdale Farm, Thwaite Bridge which is on the Hawes/Sedbergh Road. Just follow the signs and you will get there. Last year's show saw a record number though the gates and with so much on offer for one of the oldest traditional sheep shows, it really is more than just sheep.

This year we will see the return of Action Ants, fun for all the family with their archery and obstacle courses which will be free for all to enjoy. There will be a showcase from Woolkeepers, who work with farmers, giving them a fair price for their wool and using it in a sustainable way including projects on local moorland.

The craft tent provides an array of handmade goods, gifts and local produce and shows the results of the handwriting competition for the young children of the dale. Enjoy a local ice cream whilst listening to the Hawes Silver Band, jump on the Hawes Fire Brigade engine, put your knowledge to the test and take part in the public judging of our chosen sheep or enjoy a drink or two in the beer tent.

Whatever your plans for the day, arriving by car, or by train and jumping on the 'Garsdale Station Shuttle Service', we look forward to welcoming you to the Moorcock Show.

For more information please visit: www.moorcockshow.co.uk or email: enquiries@moorcockshow.co.uk. Entry: Adult £8.00, Child Free, Parking Free.

Music Tuition for all ages with
www.colinbaileymusic.co.uk
07711 211169

Drums & Percussion; Vocals;
Piano & Keyboards; Music Theory;
'Get Musical' Workshops.

W.S.HARTLE
FAMILY BUTCHER, WEST BURTON
Best Quality Meat, West Burton Lamb,
Homemade Sausages and Burgers,
Free Local Delivery and Freezer Orders
Tel: David on **01969 663302** or visit
www.hartlebutchers.co.uk



TOM ADDISON

FINE FURNITURE

Fine quality furniture handcrafted in the heart of
Wensleydale.

**Free standing and fitted furniture designed &
handmade to your requirements.**



All enquiries welcome: **07585952951**



tom@tafinefurniture.co.uk www.tafinefurniture.co.uk



Barn Studio Bookkeeping

Bookkeeping | Tax Returns | VAT Returns
Company and Sole Trader Accounts
Friendly service in the Yorkshire Dales

Terry Newman MICB | 07572 842398
barnstudiobookkeeping@gmail.com

Bolton House, West Burton, DL8 4JU



M Fothergill

Building Services

All aspects of building work undertaken **667936 / 07966 624649**

Hawes DL8 3RP

Plastering Alterations Extensions
Roof work General Maintenance



Yorkshire Dales Accountancy
Chartered Accountants

taxation & business advisors

We provide a broad range of accountancy
and taxation services to our clients.
Please feel free to contact Martin or Hazel.

E-mail:

info@yorkshiredalesaccountancy.co.uk

Telephone: 01969 678128

Website:

www.yorkshiredalesaccountancy.co.uk

Stopping River Ure Pollution

It's amazing what an editorial in the Upper Wensleydale Newsletter can achieve!

I had a very good response to my editorial in this year's March edition in which I called for a group of volunteers to work together to stop the River Ure being polluted. So the Association of Rural Communities sponsored a public meeting at Leyburn on April 30th. There was definitely a 'Wow' factor as more and more people walked into the hall – 120 in all.

With so many signing up to support this venture the Association organised another meeting on June 25th at which Stop Ure Pollution (SUP) was formed with Prof Richard Loukota as its chairman and myself as clerk.

Its objectives include: to stop the discharges of raw sewage when storm conditions are not occurring; to upgrade water treatment facilities, and to identify pollution caused by run-off from farms; the setting up of an ongoing citizen science project and training members to test and

report on water quality at various agreed points along the River Ure; and obtaining Designated Bathing Water Status for at least one section of the river.

With over 50 people saying they are willing to volunteer as 'citizen scientists' the Yorkshire Dales River Trust (YDRT) has been able, with SUP support, to plan for a major water sampling project in August.

As Mary Boyd of YDRT has explained to SUP volunteers: 'The purpose of the testing is to get a snapshot of the health of the River Ure by measuring a series of elements. Sampling at multiple sites along the Ure and its tributaries will enable us to understand the chemical and biological profile of the river, and to help us gauge the relative importance of different pollution sources – under the same weather and river conditions.'

For more information see the Stop Ure Pollution Facebook page and www.pipspatch.com.

Pip Pointon

Portable Appliance Testing (PAT)

Hawes DL8 3NT

**Certificates and Reports supplied on each appliance tested.
Please call for free quote and advice**

**Wayne Webster 01969 666020
or 07766 640905**

TEASDALE ELECTRICAL

Your local electrician serving the dales and the surrounding areas

Askrigg

North Yorkshire

Tel - 07814 184974 (Steve)

Email - teasdaleelectrical@icloud.com



Hall & Birtles
-SOLICITORS-



For all your legal requirements offering a full range of services.

Hawes DL8 3QL, Tel 667171

email: hawes@hallandbirtles.co.uk

**and at Leyburn, Golden Lion Yard,
DL8 5AS, Tel 01969 625526.**

email: Stuart@hallandbirtles.co.uk

**Regulated and authorised by the
Solicitors Regulation Authority**

HAWES POST OFFICE in the Community Office

OPENING TIMES:

9.00am to 5.00pm Monday to Friday

9.00am to noon on Saturday

Phone number: 01969 667201

BAINBRIDGE POST OFFICE

**Post Office open at Bainbridge
in Sycamore Hall 9.00am to 11.00am
Mondays and Wednesdays**

ASKRIGG POST OFFICE

**In Sykes House, Noon to 2.00pm
Mondays and Wednesdays**

New Doors at Aysgarth Church

Stunning new glass doors now welcome people to St Andrew's Church at Aysgarth.

The old wooden doors were uninspiring and were a problem at funerals as pall bearers had to crouch down to get coffins with floral displays on top of them safely under the low upper casing.

The church's fabric manager, Neil Piper, said: "It had been felt for a long time that the old doors were uninspiring, being solid wood of no particular interest. What was proposed was some kind of glass door which would allow people to see into the church and also let more light in. Through discussion with the PCC, the church architects came up with a bold plan to create arched doors, which are very appropriate for a church building."



"Now that they have been installed they look quite stunning and have several advantages: firstly, they present an attractive and welcoming front to any approaching visitor; secondly, they allow additional light into the building; and thirdly, (and most crucially) they extend the height of the entrance by over two feet (60 centimetres), allowing a much more dignified entry for special occasions such as weddings and especially for funerals."

"Inevitably it has been a slow process. Consulting with the architects, getting the necessary permissions to proceed and drawing up specifications to put the work out to tender takes time. Four contractors submitted bids for the work and the contract was finally granted to Peter Merrell, a carpenter in Grassington. He has done a wonderful job, much of it in his own workshop."

The Rev Tom Ringland commented: "Raising the height of the doors makes it much easier for pall bearers at funerals. This is respectful, and makes this duty easier on a stressful occasion."

"We will be opening the external doors so there's a clear view through the new glazed inner doors to the interior of the church. This is at once welcoming, and also allows people to see if there is a service in progress before they come in."

"It's great that our [Penhill Benefice] churches are opened daily so everyone can come in for a bit of peace and solace, perhaps for prayer or just to relish the architecture and Christian heritage."

Penhill Ladies

Our meeting, on **August 21st at 7.30pm** at Carperby Village Hall will involve Circle Dancing and is a fun evening for all.

The circle is an ancient and universal symbol of wholeness and unity. Dancing in a circle is one of the most ancient ways in which people celebrate community and togetherness, coming together to mark springtime and harvest, marriage and birth using established steps and patterns.

Modern circle dance draws on the rich and diverse traditional dances of many countries, including the Balkans, Greece, Israel, Russia, and France. There is also a growing repertoire of new dances to classical music and contemporary songs. Together we will learn more about the origins of modern circle dance in England and try some very simple dances which celebrate significant points in our lives and experiences.

Please wear comfortable clothes and soft shoes. If people would like to dress up, it is often nice to dance in a flowing dress or skirt, but it is not compulsory.

Non-members are welcome and can attend for a fee of £5.

Little Green Bin - The Sequel

A lot of people have spoken to me since my article in last month's Newsletter to tell me how they share my concerns over the demise of the little green bin. Consequently, I thought I would add fuel to the fire this month by telling you of yet another initiative by the Council to 'improve' the waste and recycling collections across North Yorkshire.

Like me, you may have heard nothing about this, but I was pointed in the direction of a 'Let's Talk Rubbish' consultation that is being undertaken by North Yorkshire Council (very apt?), seeking residents' views on the current system and their proposal to change things. Naturally, I felt I should complete the survey that is available online and I was staggered to read of the proposal to provide each household with two more wheelie bins in which to place their recycling - instead of the existing boxes and bags.

Seemingly, the quality of the recycled items is key in securing a good price for them and it would appear that the recycling that is currently collected from our boxes and bags is deteriorating in quality before it gets to the recycling plants. Presumably, this has a lot to do with the very inclement weather we seem to have in the area and the fact that items for recycling are frequently being chased around the area after being put out for collection the night before (as instructed) but then getting blown away by the wind, and quite often, rained upon. I am not entirely convinced that wheelie bins will make much difference to this as they too get blown over, but presumably the Council thinks there is a better chance of achieving high quality recycling material this way.

So, let's now consider the logistics of this wonderful new idea ... Obviously, once again, the Council are going to employ a 'man with a van' to deliver two more wheelie bins to every household - no small task in this far-flung rural area - and no doubt we are going to be told that we have the privilege of keeping our existing boxes and bags to use as we see fit. Once again, a competition springs to mind to find some sustainable uses for these items manufactured specifically for our recycling at no doubt great expense to the Council - and therefore to us.

Then, we all have to figure out where we are going to store these two new bins. If you are

lucky, you may have appropriate access to a rear garden or yard that is big enough to store what will be four wheelie bins (If you subscribe to the garden waste service). We have a pretty good-sized garden but even we will struggle to find space for two more wheelie bins. If you have no garden or yard what do you do with your collection of bins then? Maybe they will be an aesthetically pleasing variety of colours that we could put along a wall of the kitchen with a worktop over to make a breakfast bar? Maybe, we could line them up along the street or footpath (hopefully without blocking either) and have a competition to see who has the smartest line-up, or the most highly decorated bins?

I can already see the jostling of the bins on the day before collection to see who can secure the prime spot on the roadside. There is probably an animated TV series here. I could start writing, but I think I need to see the colour of each bin before giving each a name and a character.

Anyway, on a serious note, we now come to the really tricky bit ... the collection. The Council has a plan (oh dear) and it is thus ... a four week rotation of bin collection, as follows:- Week One - Recycling - paper and card. Week Two - Rubbish - hoorah, that's easy - I think. Week Three - Recycling - glass, cans and plastic. Week Four - Rubbish - another easy week.

Given the issues we already see with trying to figure out which week we are on before putting



- City & Guilds qualified
- Fully insured ● Certificates issued
- Prompt professional service
- NO MESS - NO FUSS!

Martin Tradewell

QUALIFIED CHIMNEY SWEEP

01969 640099

5, The Row, Horsehouse, Leyburn. DL8 4TT
Email: martin@daleschimneysweep.co.uk



out the right bin, how on earth are we going to manage a four-week cycle, and what has happened to the poor little green bin collection - or big green bin? The jostling of the bins is going to get worse. I already know that some people watch what others put out before placing their own bin out for collection, but instead of two options, we are now going to have four. I sense some people could be up all night prior to collection just to make sure they have the right bin lined up to be emptied the following morning.

I am feeling stressed just thinking about it all. According to the Council, research has suggested that 'this idea would provide better value for money, reduce carbon and contamination and give residents space for any new recycling materials that could be added in the future'. Dear God More recycling options in the future - I don't think I can cope.

I have to say that I would perhaps be taking this all much more seriously if I actually thought it mattered how our recycling was stored and presented for collection, but I don't. Too often, we have watched the 'operatives' collect our recycling from the various boxes and bags and chuck it all into the same part of the lorry. So, why on earth did we spend the previous days checking to make sure that our recycling was sorted into the right containers? Based on that experience (and I am not alone in having seen this), why on earth should we have more bins to store and spend more time sorting all these materials only to find that they all end up in the same bit of the lorry on collection day? Whilst I can see the benefit of separating things at the source (ie, collection point) that only matters if they remain separated for the rest of their recycling journey. It would appear this is not the case. So, why don't the Council just give us one bin for our recycling, simplify collection arrangements and then invest the money they have saved in a better sorting and processing facility (which I thought they had anyway?)

So, please do go online and complete the 'Let's Talk Rubbish' survey whilst you have the chance - how often are you invited to do that? Meanwhile, I might just put forward a different suggestion.

Every household to receive one new wheelie bin (let's go for bright pink to see what the National Park Authorities think); householders to chuck all recyclable materials into it; Council

'operatives' to collect and empty the bin every week into one lorry, whilst another lorry collects and empties the rubbish bin; the recyclable materials to go to a processing plant where they are sorted, cleaned and processed. If the bins are collected every week the materials are not in the bin long enough to deteriorate, unlike the fortnightly system that currently exists. Meanwhile, those householders who subscribe to the garden waste service should get a weekly collection, particularly during the growing season, with the contents being processed to make compost which can be sold to the public, recouping some of the cost of the service. This would simplify the process for householders and I can't believe it would cost any more to the Council as they shouldn't need additional lorries or staff.

Was that difficult to figure out? You tell me.

Karen Prudden

DENTURE PROBLEMS?



Denture Studio

Are you unhappy with the look or fit of your existing dentures?

WE CAN HELP

Our in-house Clinical Dental Technician Mark can provide quality bespoke dentures designed to your individual needs



To Book
FREE
Consultation **CALL**
01677 422968

Website: www.orcharddentallab.co.uk

Email: info@orcharddentallab.co.uk

1 The Villas, Bridge Street, Bedale, DL8 2AB

Visit the ewe-commerce store for ewe-nique merchandise.

Postcards, mugs, magnets, t-shirts and more.

Eunice as ewe've never seen her!

webpr.co.uk

Index to Advertisers

	Page		Page
Accountants, O'Reilly, Hawes	14	Logs, Springbank Logs, Hawes	17
Accountancy, Yorkshire Dales	33	Logs, Seasoned Hardwood	9
Advertising Rates and Contacts	40		
Appliance Repairs, Bartlett	17	Massage, Mobile Therapist	15
Aysgarth Falls Hotel	22	Middle House, Askrigg	18
		Music Tuition, Colin Bailey	33
Bear Cottage Interiors	29		
Boiler Service – Efficient Heat	9	Nails, Lashes etc, The Parlour, Hawes	29
Boiler and Aga Service, M.F.W.	17		
Bookkeeping, Barn Studio	33	Optician - Mike Addison	22
Builder and Plasterer, M. Moore and Son	23	Orthopaedic Massage, Reflex	22
Builder, Dinsdale John and Ted	17	Ousewem, Flood Prevention	26
Builders, Moore and Blackhurst	20		
Building Contractor, Andrew Hawkins	6	Pet and House Sitting, Home Run	3
Building Services, Fothergill M	33	Physio, Arena	18
Butchers, Cockett, Hawes	26	Plumbing and Bathrooms, Greiff	15
Butchers, Hartle, West Burton	33	Plumbing and Heating, Parfitt J	17
		Plumbing and Heating, Upp Wnslydale	11
Chapel Gallery	30	Portable Appliance Testing	34
Chimney Sweep, Dales Sweep	36	Post Office,	
Coach Travel and Holidays – Bibby's	13	Hawes, Bainbridge and Askrigg	34
Coal Merchant, Peacock	19	Print Services, Pennine Print	29
Cumbria Stove Centre	19	Print Services, Wensleydale Press	19
Dales Forge, Metalwork	31	Scrap Car and Commercial Collection	13
Dales Garage	12	Sewing Needs; Kearton	14
Dales Web Solutions	4	Solicitor, Hall and Birtles	34
Decorating Supplies. Sanderson and Co	21	Solicitors, McGarry	11
Dental Lab, Orchard	37	Slimming World	15
		Stone House Hotel	26
Edgley Garage, Aysgarth	21	Sycamore Country Store	29
Electricians - Teasdale	34	Sykes House, Askrigg	30
Estate Agent, Jessop Robin	30		
		Tailoring - Applegarth Couture	13
Fabrics for sale	12	Taxi, Peacock, Bainbridge	19
Fish Market, Hawes	14	Tea Room, Hamilton's, Aysgarth	6
Flooring - NH	15	Tea Room, Mill Race, Aysgarth	26
Fuel Available, Dale Head Garage	13	Tea Room, The Moorcock, Garsdale	7
Funeral Directors, Sanderson and Co.	4	Timber Buildings, Castle	31
Furniture, Handcrafted, Tom Addison	33	Travel Specialists – Sturdy Travel	16
		TV Aerial & Satellite Services. J.Banks	10
Gardener required	21		
		Vets Bainbridge	20
Hawes Country Store	20	Vets, Wensleydale	23
Hand M Craftsmen, Ingleton	22		
Hairdressing, Edie Peacock	40	WCF Fuels	27
Hairdressing, Twisted	13	Wensleydale Craft Fairs	31
Healing Collective, Swinithwaite	31	Wensleydale Creamery, Hawes	16
Hearing Tests and Aids	12	Wensleydale Tree Services, D. Allen	29
Home Care, Upper Dales	19	Woodcraft Studio & Timber Services	7
		Woodwork and Decorating. S. Peacock	17
Ironing Service–Tracy Hume	31		
		Yorebridge House Hotel	28
Joiner and Cabinet Maker, Bushby	13	Yore Mill Craft Shop and Gallery	19
Joiner, Solid Joinery Solutions	9	Yorkshire Foot Clinic	11

Bainbridge W.I. News

I guess this is now the height of summer - allegedly. However, this year it seems we might have missed this season (at least, that is how I feel as I write this). Nevertheless, we keep ourselves busy and hope to enjoy the fresh air as often as we can.

We were delighted to learn that we had done well with our entries to the Great Yorkshire Show, finishing third to some much bigger WI's. Perhaps you went along to the show and were able to see what we had entered, which included a patchwork cushion cover, woolly hat and a wreath made from recycled paper. Well done to our very talented members.

The ladies of the Walking Group finally managed to get one walk although that was only after two postponements due to bad weather. It has been a very disappointing year for them so far - maybe the second half of the year will be better.

Our Lunch Club ladies thoroughly enjoyed their Afternoon Tea at Hamiltons in Aysgarth but were devastated to learn that the property is up for sale. Where on earth will we get a similar welcome and such good food and entertainment? Our July meeting was to the White Bear in Masham which is another favourite.

Our July meeting saw Valerie Welti talk to us about women in policing. It was a fascinating talk and we learned how hard it has been for women to be accepted into the Force and treated equally. It was lovely to welcome some more new members to this meeting and we hope that they will all enjoy being a part of Bainbridge WI.

By the time you read this, our 'crafty ladies' will have had a session at Sycamore Hall, learning how to pegloom. This is a really simple and yet creative craft which can make good use of spare wool as well as rag offcuts to make items including rugs, cushion covers, scarves etc.

We entered three teams into the High Dales WI Treasure Hunt which took place on foot around Redmire in early July. Fortunately, the weather was relatively good (at least for this year) so we were able to wander around without getting drowned. We discovered parts of Redmire we had never seen before and had good fun trying to solve the cryptic clues (they certainly felt cryptic to us). We were delighted that we all managed to finish and even appeared in the top three. The evening concluded with a delicious supper,

served in Carperby Village Hall. The next High Dales WI event is to take place on **Thursday, October 3rd** at Carperby Village Hall when Tristan Prudden will be giving a cookery demonstration after a 'soup & sweet' lunch.

Our August meeting will take place at Bainbridge Village Hall on **Thursday, August 15th at 7.30pm** when our speaker will be Gregan Davis from the Georgian Theatre Royal in Richmond. Do come along and join us for what should be a really interesting talk about the theatre which we hope to follow before too long with a visit.

Our IT Club continues to meet at Sycamore Hall on the first Friday of the month at **2.00pm**. Everyone is welcome to come along and learn a bit more about using technology (ie, mobile phones, tablets, laptops etc). We try to theme each session to one subject and are always keen to hear what people would like to learn about.

If you would like more information about our busy and friendly WI or any of our events and activities, please contact our President, **Nicola Robinson on 650801**. We would be delighted to welcome you to our merry throng and can assure you of a warm welcome, lots of fun and plenty of opportunities.

Hawes Junction Chapel

Mount Zion, Garsdale Head, LA105PT

Sunday, August 18th at 2.30pm.

Favourite Hymns and Their Stories.

Light refreshments will be served at the close of the service.

News from Bainbridge Vets

With the recent warm and wet weather we have been experiencing higher than normal worm egg counts in sheep. Please bring us a sample at the surgery and we can check if your sheep need worming and advise you on the best product to use and when. Any further questions please do not hesitate to give us a call on **01969 650263**

Yorkshire Air Ambulance

Carolyn would like to thank everyone for their kind donations. £938 raised for a good cause



LEYBURN ARTS & COMMUNITY CENTRE

Richmond Road, LEYBURN, DL8 5DL

Bookings & Info: **01969 624510** leyburnartscentre.com

C I N E M A

(£6, or £5 for 60+ / U14. Unless otherwise stated)

FRI 2 AUG	6pm	Chariots of Fire (1981) (PG) 2h 5
TUE 6 AUG	7pm	La Chimera (15) 2h 10 (Exploring Film)
FRI 9 AUG	6pm	American Fiction (15) 1h 57
FRI 16 AUG	6pm	Wilding (PG) 1h 15
FRI 23 AUG	6pm	Paterson (2016) (15) 1h 58
FRI 30 AUG	6pm	The Kite Runner (12A) 2h 8

OTHER EVENTS & NEWS (*Half price entry for our volunteers)

WEDNESDAYS 6:30pm & SATURDAYS 10am from 3 AUG to 24 AUG

Workshop Course on FILMMAKING with Giovanni Maderna

SAT 24 AUG 7:30pm Claude Bourbon (Live Music) *£12

SUN 1 SEPT 2pm André Rieu's 2024 Concert (Live Cinema) *£12

TUE 3 SEPT 2pm André Rieu's 2024 Concert *£12 / £10 (Tues club)

Please book events in advance if possible. Call us Mon-Fri 1-4pm



Edie Peacock Hairdressing At the Parlour

Call: 07817 312906

Advertising

**Boxed adverts: £6, £12, £18
(dependent on size)**

There is a big reduction for six issues or more, so for six issues the totals are:

£25, £50 or £75

Greetings etc. £2

What's ons (non-commercial) are free

Contact for adverts:

Barry Cruickshanks

01969 667458

uwnlinput@gmail.com

Whilst we try to ensure that all information is correct we cannot be held legally responsible for omissions or inaccuracies in articles, adverts or listings, or for any inconvenience caused. Views expressed in articles are the sole responsibility of the person by-lined. Articles by committee members carry just their initials.

We appreciate being asked before any part of the Newsletter is reproduced.

Postal Subscriptions

If you would like to receive the Newsletter by post every month the cost is £14 per annum. Please pay by BACS (Account 74237721, sort code 51-61-33) and send your full address details to uwnlinput@gmail.com. Or send a cheque for this amount (made out to the Upper Wensleydale Newsletter) plus your details to Karen Jones, Skellgill Cottage, Skellgill Lane, Askrigg, DL8 3JG.

Published by

The Upper Wensleydale Newsletter
Lilac House, The Holme, Hawes, DL8 3QR
01969 667458

Email for submission of articles, what's ons, letters etc.: uwnlinput@gmail.com

Newsletters on line, simply search on
"Upper Wensleydale Newsletter"

Archive hard copies back to 1995 are in the Dales
Countryside Museum resources room.

Editors: Barry Cruickshanks,
Kevin Davis,

Committee: Malcolm Carruthers,
Tony Hutchinson, Karen Jones (Treasurer),
Neil Piper, Karen Prudden,

**Founded in 1995
by the late Alan S. Watkinson**