

# THE UPPER WENSLEYDALE NEWSLETTER

**Issue 309**

**June 2024**

**Donation please:  
50p suggested**



Covering Upper Wensleydale from Wensley to Garsdale Head plus Walden  
and Bishopdale,  
Swaledale from Keld to Gunnerside plus Cowgill in Upper Dentdale.

## Guest Editorial

### Warp Seven - Technology and Us

The 1970s version of All Creatures had to depict an age without fax machines, antibiotics, television and most power tools. By the time the 2019 series remake was filmed, they had to wind back over eighty years and make us forget the internet, gene sequencing, mobile phones, streaming services and AI. All in a day's work when it comes to storytelling. Writers and actors have been helping us suspend disbelief to recreate the past since the dramatic arts first appeared. But over the last 30 years or so, the rate of change itself has accelerated.

Just after the turn of the millennium, filmmaker Peter Jackson described a missing shot that was needed after principal photography on the Lord of the Rings trilogy had concluded. Instead of assembling a film crew for half a day, actor Andy Serkis went to Jackson's house with his motion-capture suit and they filmed the scene right there, on the living room floor. The data from this performance was then converted into live action by digital animators. That was in 2002. Incredibly, the widespread use of computer graphics in film had begun just nine years prior, with 1993's Jurassic Park. Nine years, from the first CGI dinosaur to the sprawling vistas of Lord of the Rings.

Alexa, start a riot please.

Since those films came out, digital tech has gone on to remodel not only Hollywood but every aspect of our lives. We make video calls, check the weather, navigate the roads, take pictures, manage our finances, book holidays and message each other, all from devices that fit into the palm of our hand. Unfortunately, the digital sword cuts both ways. If we have a smart fridge and it detects we're low on milk, it can automatically add some to our next food delivery. But if an outrage is committed on one side of the world, serious unrest can erupt on the other side almost immediately.

I admit to feeling conflicted and just a bit hypocritical on this whole subject. On the one hand, I'm a luddite about the Internet of Things (wearables, autonomous vehicles and gizmos that listen for your every word, like Alexa) but, on the other, I get a vague sense of unease if I happen to leave the house phoneless. I have to remind myself that up until about the year 2000, I would drive all over the country armed with only a road atlas.

High-tech creativity.

I've enjoyed making videos and writing music since my youth. In 1977 (funnily enough, while the first All Creatures Great and Small was still filming), I'd be out with my Super-8 camera and a couple of other kids, making deeply silly three-minute 'documentaries' about space-gerbils invading the Earth or a remote island populated only by chunky-pullover-wearing art teachers. For cost reasons, these films were always silent. I never dreamt that one day, I'd be able to record both video and sound with no need for film stock, sound striping equipment or a light meter. Likewise with the music. Although there's nothing like a live performance, it no longer takes piles of manuscript paper, dozens of musicians and expensive studio time. Numerous bits of commercially available software mean it can all be done at home. Even professional film composers mock up their work on computers before it gets submitted and recorded by real musicians (or not, depending on the genre/budget/deadline panic).

#### Lo-tech Kremlin

Quite a few column inches (both virtual and actual) have been devoted to high-profile data-loss scandals and the casual intrusion into our lives by tech giants, which is a concern for many of us. Not that it's much of a recommendation but, apparently, the Kremlin agrees. In 2013, it was reported that the Russian government had started buying up typewriters because it just didn't trust digital data. OK, point taken. It's harder to catch someone pocketing a flash drive than it is if they're sack-barroving a filing cabinet across Red Square.

#### A bug in your ear.

Even if we don't use computer technology actively, we're all affected by it passively. Like it or not, the minute we drive on main roads, draw cash at an ATM or buy groceries, we're in the digital realm. But snooping aside, what really gives me pause is the social side of it. People glued to their phones, the relentless ping-pong of messages and (until you get close enough to spot the earphones) people walking along, seemingly talking to themselves. It's as if nobody is living in the moment anymore. They're all somewhere else, miles or even worlds away. Switching off and going to sleep has become a familiar problem because absolutely everything is available all the time. No need to go to the library the next day; just

tap your phone and the answer to any question is right there. How high is my street above sea level? What year was Malcolm Sargent born? Do higher dimensions really exist? What's the population of Liechtenstein? How many teeth on an average bow saw? So prevalent is this phenomenon that it's been given a name – smartphone addiction – and it's been the subject of numerous academic studies.

My youngest son's age places him squarely in the Millennial bracket; a cohort that got a bad press for a while, until Gen Z came along and started soaking up some of the flak. But this particular Millennial has a policy of periodically setting aside his phone, usually when on holiday or out for a meal. I confess to being a little astounded that someone born and raised in the era of ubiquitous tech is inclined to reach for the "Off" switch, but it does give me hope that perhaps things won't go quite as we expect.

Living in the Dales appeals to me on every level. It's beautiful, peaceful and away from the madness. That said, I do also feel lucky to live in a time when digital technology makes leading that life very easy. Given the nature of my job (I'm a translator/editor) and my video/music pursuits, I've become very familiar with computers. But when the weather gets rough and the power goes off for a few hours, I'm reminded of what life was like before electronics and how fragile our current situation really is. My initial reaction to a power cut will usually be some kind of exasperated groan. But it's quickly followed by a sense that maybe I can use the time constructively and – heaven forbid – actually open a book.

*The monotony and solitude of a quiet life stimulates the creative mind.* (Albert Einstein).

**Jon Dellar**

**The accuracy, appropriateness or legitimacy of any product or service advertised in this publication is the sole responsibility of the advertiser and not of the Upper Wensleydale Newsletter.**

**DEADLINE FOR COPY FOR THE  
NEXT ISSUE IS**

**TUESDAY JUNE 25th  
PUBLISHED ON JULY 3rd**



### **Eunice the Ewe**

Last month I was hiding in the One Day Wonders Morris Dancers advert on page 22 and the lucky winner of the £10 prize is Betheni Facer of Hawes.

Where am I this month? To enter for the £10 prize, please include your postal address if replying by email.

### **Carperby Open Gardens**

Come and visit Carperby Open Gardens, with plenty of beautiful gardens open to the public including the community "Memory Garden" on **Sunday, June 30th between 11.00am and 4.00pm.**

Parking and toilet facilities will be available at the Village Institute and Village Green. Entry will be £5 for adults and free for children. Refreshments will be served in the village institute, there will be a plants available for sale in various gardens and a 'Childrens Trail'.

### **Submission of articles**

Please note that all submissions should comply with current copyright legislation. If submitted articles are not the original work of the person submitting them, then all relevant permission should be sought and granted for reproduction.

### **In This Issue**

### **Page**

Guest Editorial	2
Competition	4
Penhill Benefice Services	7
Ramble On	9
Notes from Thorney Mire	10
Heavens Above	12
Rage Virus in Redmire	15
HMS Wensleydale	16
What's On	20
DCM News	20
Upper Wensleydale Benefice Services	24
Blueboxt/Wensleydale Arts Festival	34
Mystery Picture	37

## June Competition

All the answers are a contronyms, also called a 'Janus word'. This is a word which has two meanings which appear to contradict one another. For example, left can mean both remained or departed. The initial letter of each answer is in brackets.

1. Adding fine particles, or to remove them (D)
2. To secure, or to flee (B)
3. Move quickly, or stuck (F)
4. To connect, or to break (B)
5. Advantage provided to ensure equality, or a disadvantage that prevents equal achievement (H)
6. A particular type, or many types (V)
7. Invisible, or obvious (T)
8. To supervise, or to neglect (O)
9. To sell or lease the use of a commodity, or to buy the use of a commodity (R)
10. A common practice, or a special treatment (C)
11. To approve, or to boycott (S)
12. A person of the nobility, or an equal (P)
13. Belonging to the beginning of something or new, fresh, inventive (O)
14. To conceal, or to show, broadcast (S)
15. To seek advice or information from someone or to provide professional advice or service (C)
16. Heading to a destination or to be restrained (B)

Please send in your answers (as many as you can solve) to arrive by **Tuesday, June 25th**. Don't forget to include details of your nominated charity which will receive the £50 prize should you win.



Family run Teashop situated next to the magnificent Aysgarth Falls

Light Lunches ~ Soup & Sandwiches ~ Afternoon Teas

Cakes, Scones, Biscuits & Traybakes

Muddy Boots & Dogs Welcome ~ Card Payments Accepted

01969 663446

## May Competition Answers

- |                     |                      |
|---------------------|----------------------|
| 1. Dalmatian        | 11. Bolognese        |
| 2. Pointer          | 12. Corgi            |
| 3. Newfoundland     | 13. Jack Russell     |
| 4. Red Setter       | 14. Golden Retriever |
| 5. Mastiff          | 15. Airedale         |
| 6. Collie           | 16. Labrador         |
| 7. Dachshund        | 17. Labradoodle      |
| 8. Chihuahua        | 18. Greyhound        |
| 9. Poodle           | 19. Boxer            |
| 10. German Shepherd | 20. Lhasa apso       |

This proved harder than expected and only a few people managed to get all 20 correct. The winner is Laura Gavin of Carperby whose nominated charity to receive the £50 is Blood Bikes.

### SANDERSON & CO. FUNERAL DIRECTORS

A complete and caring funeral service  
provided by an independent  
family business established in 1879.



For personal and  
dignified attention  
in time of need  
please contact

**Richard Sanderson**  
Leyburn Business Park DL8 5QA

**Tel: 01969 623143 (24hrs)**

**Mobile: 07710 652348**

**Email: sandersonandcoleyburn@gmail.com**

We offer Golden Charter Pre-payment Funeral  
Plans Please ask for further (written) details.

### Drop-off points and contacts

For news, articles, reports, letters, What's  
On dates, competition entries, suggestions  
and comments:- All 01969 numbers.

<b>Hawes:</b>	Community Office	667400
<b>Bainbridge:</b>	Sylvia Crookes, 3, Bainside	650525
<b>Askrigg:</b>	Sykes Shop,	650535
<b>Carperby:</b>	Anthony Abraham Hall Garth	663243
<b>West Burton:</b>	Nadine Bell, Margarets Cottage	663559
<b>Aysgarth:</b>	Hamilton's Tearoom	663423
<b>Redmire:</b>	Kevin Davis Westholme	624165
<b>Thoralby:</b>	Neil Piper	663747
<b>West Witton</b>	Christine Barker, Chestnut Garth	624934



## Bainbridge WI

### Things Are Hotting Up

I am sure you are not expecting me to say that we have had a very dull month - as we haven't, and I won't!

May is generally a time when we are out and about a lot, but this year we haven't really had the weather to do quite that. However, our Garden Club ladies have been to look at a member's garden for ideas and a group also went along to Constable Burton Hall for the Tulip Festival where they had a good time, and nice weather. They have also been to Askrigg Bottoms to see the wild flowers which we hoped hadn't been affected too badly by all the rain!

The Walking Group are yet to venture forth due, in the main, to all the rain. When it wasn't actually raining (a rare day!) the ground was just too wet and dangerous to walk far! Fingers crossed that all changes soon, although then we will be complaining it is too hot and the ground is hard - bring on the hosepipe ban!!

The lunching ladies have been enjoying good food and company with their visit to The Queens Head in Finghall in April and The Highwayman near Kirkby Lonsdale in May. There are so many wonderful places to choose from that they are spoiled for choice! - the weather rarely deters them!

Some members went off to Thirsk for an Enamelling Workshop where they were guided to produce some lovely necklaces. Of course, there was also a lunch included, this time at The Arts Centre in Thirsk.

We continue to trial our drop-in craft session on the **second Saturday of each month from 10.30am** at Sycamore Hall. This is a chance for you to call in with your craft projects, either to get help from others, or just to enjoy crafting with like-minded people. Our June session will be held on **Saturday, June 8th at 10.30am** when we will have some paper-crafting projects to try too. Do join us!

Our May meeting saw Tim and Sam come along to enlighten us on sustainable eating. It was interesting to hear how our choices can affect the planet in respect of the carbon footprint of ingredients. It isn't always as obvious as it seems to choose the right things and we could have got very depressed about the challenge of what to eat for the best if we took it

all literally, but it was stressed to us to perhaps focus on one thing at a time. This was certainly a provocative evening, highlighting the difficulties of making the right choices and particularly here, how those choices could affect the future of our farmers, local businesses and environment. A very difficult balancing act!

We held a 'Soup & Sweet' Lunch at Bainbridge Village Hall on May 20th where guests were able to enjoy a choice of delicious homemade soups and puddings whilst catching up with friends. We hope to resume regular lunches in the autumn but as we rely heavily on volunteers to run these effectively, we need to ensure we have sufficient people available before committing to dates.

June is always a busy month for us and we are already planning for our main fundraising event of the year which will be our little stall on Bainbridge Village Green for the Beamish Car Rally lunch stop. This will be on **Sunday, June 16th**. Come along and see us and be tempted by our homemade treats (usually between **11.00am and 2.00pm approx**). Again, another activity that relies on good weather, so cross your fingers!

Our June meeting is actually a trip out, which we are very much looking forward to. We are going to have Afternoon Tea on a Canal Boat as it takes a leisurely journey up or down the canal from Skipton. We really will have to cross our fingers for good weather that day!! This trip is only available to members by booking in advance and by the time you read this, it will probably be fully booked!

It's still not too late to join our merry throng, so do think about coming along as a guest to see what we are about and then perhaps consider joining us. Membership fees for the coming year are just £39, thanks to a subsidy from our WI funds. There are endless opportunities once you are a member - not just our monthly meetings, but also our outings, clubs (Book, Garden, Lunch, Craft, IT and Walking), workshops etc. We very much look forward to welcoming new members, so give us a try!

If you would like more information about our busy and friendly WI or any of our events and activities, please contact our President, **Nicola Robinson on 01969 650801**. We would be delighted to welcome you to our merry throng and can assure you of a warm welcome, lots of fun and plenty of opportunities.

## Central Dales Pharmacy Update

### NHS COVID-19 Spring Booster Programme

The NHS COVID-19 Vaccination Programme has vaccinated almost half of those eligible with a spring booster a month after the campaign's formal launch.

More than three million people have taken up the offer of a spring COVID jab to keep up their protection from the virus. Around 6.6 million people are eligible, including those aged 75 and over, with a weakened immune system or care home residents. The offer formally opened to everyone outside of a care home on April 17th.

If you are one of those due a jab this spring but are yet to come forward, please do book an appointment online or via the NHS App as soon as possible. You can also book via the Covid-19 helpline on 119. The campaign is set to end on **June 30th** when the offer of a first or second dose for anyone yet to come forward will also end as COVID vaccinations move to a seasonal targeted offer.

Getting your vaccine couldn't be easier with thousands of sites open across the country including here at Central Dales Pharmacy in Hawes. We have appointments available six days a week between **10.00am and 5.00pm**, so there is an appointment time to suit everyone.

**Free NHS Blood Pressure Testing** - Why get your blood pressure checked? - High blood pressure, also called hypertension, is a condition which can be controlled to reduce your risk of a heart attack, stroke or other cardiovascular disease. In the UK there are about five million adults (one in every nine) who have high blood pressure without even knowing it, since high blood pressure itself rarely causes symptoms. The British Heart Foundation estimates that high blood pressure causes over 50% of heart attacks and strokes.



### *Hamilton's Tea Room At Yoredale House,*

*Aysgarth*

*Licensed Tea Room*

*HOMEMADE FOOD,*

*Light Lunches, Clotted Cream Teas*

*Open Feb-Nov, 10.30am - 4.30pm*

*Closed Mondays and Tuesdays*

*Tel: 01969 663423*

*[info@yoredalehouse.co.uk](mailto:info@yoredalehouse.co.uk)*

What does this free NHS blood pressure check involve? - Here at Central Dales Pharmacy we are offering free NHS blood pressure checks to people aged 40 and over with no appointment necessary. This involves around 10-15 minutes in the pharmacy consultation room with pharmacy staff. Following this, you may be invited to take home a blood pressure monitor that measures your blood pressure as you go about your daily life.

Depending on your blood pressure reading you may be referred to your GP. The pharmacy staff will guide you through any necessary steps depending on your blood pressure result.

**Craig Bingham MRPharmS –  
Pharmacy Manager, Central Dales  
Pharmacy, Hawes. Tel 01969 667213**



### **Swaledale Festival Events**

**Wednesday, June 5th at 7.30pm** - Raphael Wallfisch and Friends: Quartet for the End of Time

Messiaen's deeply moving Quartet for the End of Time. An all-star quartet, led by the legendary cellist Raphael Wallfisch, plays Brahms, Schumann and Fauré, plus Olivier Messiaen's extremely moving Quatuor pour la fin du temps, which was composed and first performed in a WWII German prisoner of war camp. Adults £25; Under 25s £3

**Thursday, June 6th at 4.00pm** - John Law and Jon Lloyd: Naissance

Uplifting, ambient jazz piano and saxophone. Composer and jazz pianist John Law and saxophonist Jon Lloyd present their ambient, mesmerising and gently uplifting music in the ideal acoustics of St. Andrew's Church. Adults £16; Under 25s £3

Both events at St Andrew's Church, Aysgarth. For tickets and full details please Tel: **01748 880018/9** or Email: [enquiries@swalefest.org](mailto:enquiries@swalefest.org).

Parking: a special rate of £1.50 has been arranged for evening concert-goers to park in Aysgarth RCP carpark from **6.30pm** (near Aysgarth Falls Hotel). Please buy a £1.50 ticket from the machine and display it in your car with a brief note stating you are attending a concert at Aysgarth Church.

## Penhill Benefice

**Church Services:** In case of bad weather, please check our website at [penhillbenefice.co.uk/services](http://penhillbenefice.co.uk/services) for updates.

There will be a Telephone Service each **Sunday at 9.30am**. Dial **0333 0110 946** and enter room number 61337190# and PIN 7450#.

### Sunday, June 2nd:

**9.30am** Morning Prayer,  
St. Mary's, Redmire.

**9.30am** Holy Communion,  
St. Margaret's, Preston under Scar.

**11.00am** Holy Communion,  
St. Andrew's, Aysgarth.

**11.00am** Holy Communion,  
St. Bartholomew's, West Witton.

### Sunday, June 9th:

**10.30am** Holy Communion Penhill Together  
Service, St Andrew's Aysgarth.

Revd Jude Smith, Director of  
Church Revitalisation will speak  
about The Barnabas Encouraging  
Confidence Project

### Sunday, June 16th:

**9.30am** Holy Communion,  
St. Mary's, Redmire.

**9.30am** Holy Communion,  
St. Margaret's, Preston under Scar.

**11.00am** Holy Communion,  
St. Andrew's, Aysgarth.

**11.00am** Morning Prayer,  
St. Bartholomew's, West Witton.

### Sunday, June 23rd:

**9.30am** Holy Communion,  
St. Bartholomew's, West Witton.

**11.00am** Morning prayer, St. Andrew's,  
Aysgarth.

**4.00pm** Evening prayer,  
Thornton Rust Mission Room.

### Sunday, June 30th:

**10.30am** Holy Communion Penhill Together  
Service,  
St. Bartholomew's, West Witton.

### June Mid-Week Services:

**Thursday 6th and 20th at 9.30am.**  
Holy Communion, at St. Bartholomew's,  
West Witton.

Church Coffee Morning: **Wednesday, June 5th, 10.30am to noon** at Redmire Village Hall.

Church Afternoon Tea: **Wednesday, June 19th from 2.00pm to 4.00pm** at Redmire Village Hall



**Wednesday 19 June 2024**

**Hawes Market Hall**

Entry from 7.00 pm, for  
Eyes down at 7.30pm

**Entry £6**

Tea, coffee, with a biscuit available during  
the break

**Profits to Hawes PTA**



## WOODCRAFT STUDIO and TIMBER SERVICES

formerly Gayle Mill Trust

Gates, posts and fencing to suit all your needs.  
Timber sales of larch and local hardwoods cut  
and delivered for your own project.

Mobile sawmill to cut your own trees into  
planks or beams.

Seasonal firewood delivered throughout the  
Dales

Ring **01969 667320** or **07967 844636**  
for further details

**dales web solutions**  
bespoke web site design

### All aspects of Web site design.

Visit: [www.daleswebsolutions.co.uk](http://www.daleswebsolutions.co.uk)

Email: [info@daleswebsolutions.co.uk](mailto:info@daleswebsolutions.co.uk)

Tel: **01969 666174** or **07931 822736**



## Yorebridge Sport and Leisure Centre

The Wensleydale Centre, Askrigg.  
Tel. 01969 650060

Anyone for Tennis ?

Yorebridge Tennis Club located in Askrigg has two excellent carpet Tennis Courts. The MUGA (multi use games area) was carpeted a couple of years ago and is also used for football, basketball and hockey.

For 2024, we have taken the plunge and registered the courts with the LTA (Lawn Tennis Association). The courts are available on a Pay and Play basis or there are several membership options available.

We are always pleased to welcome new members. We welcome all abilities, whether you are a junior or an adult, a beginner on the court or returning to tennis after a long break. If you don't have a tennis racket or balls then we have spares which you can use free of charge.

Social Tennis is now on **Mondays from 6.00pm to 8.00pm**. There is also coaching available from our LTA Level 4 coach, Mark Hamilton. Mark offers one to one as well as small group coaching sessions.

The courts can be booked here: <https://clubspark.lta.org.uk/YorebridgeTennisClub>.

To get more information you can email [yorebridgetennis@gmail.com](mailto:yorebridgetennis@gmail.com).

Yoga classes

Yoga classes with Michelle. Yoga (for those with some yoga experience) **Tuesdays 2.00pm – 3.00pm**.

Costs are £8.50 pay as you go. Michelle is an advanced yoga teacher, teacher trainer and yoga therapist. Please contact her directly for more details at: [yogamichelle@gmail.com](mailto:yogamichelle@gmail.com).

Gym facility and membership – now available through Clubbright gym management system.

We have a variety of gym memberships that allow you to use the gym and have a great workout to meet your needs. Come down to a well-equipped gym with a variety of kit to suit everyone's workout needs.

There are several different gym membership packages including 6-month memberships; monthly pay as you go; couples, student, and junior memberships as well as guest day passes.

See [yorebridgesportandleisure.clubbright.co.uk/Account/Login](https://yorebridgesportandleisure.clubbright.co.uk/Account/Login).

Soft Play We now have a dedicated room which is available for hire - £5 per family for 2 hours or why not try our monthly subscription £15 unlimited use? For social, active play with your babies and pre-school child. Book and pay online.

Fitness classes - via zoom or live class as indicated: Booking is essential for all classes.

Booking and enquiries can be made via our management system [Yorebridgesportandleisure.clubbright.co.uk/Account/Login](https://Yorebridgesportandleisure.clubbright.co.uk/Account/Login) or email [admin@yorebridge-sport.co.uk](mailto:admin@yorebridge-sport.co.uk) or telephone **01969 650060**. Classes are: (£8 pay as you go or class membership option available).

Fit for Life - **Mondays (zoom) 9.15am - 10.15am**. Building and Maintaining Strength to live life your way.

Tennis – **Mondays 6.00pm**. Live social tennis weather permitting, get in touch to join this group.

Walking Circuit – **Wednesdays (zoom) 9.15am - 10.15am**. Exercises to keep active people, active.

Strong and Able – **Fridays (live) 11.00am**. Maintain your ability to get out and enjoy life, build muscle tone, stability around movement and keep flexible and mobile around joints. Standing and chair-based exercise.

With Millie; Move and Tone – **Wednesday (live) Aerobics** session to music followed by core strength exercises for toning. **7.00pm (£8)**.

Circuits – **Sunday 4.00pm**. High intensity workout. Live.

High Intensity Bootcamp with Kirsten, **Tuesday and Thursday 6.00am -7.00am** – get that morning metabolism boost.

We also offer Conversational French – **Tuesdays 9.30am -10.45am**. Cost is £6 per session.

### The Iron Maiden

*Not enough hours in the day?  
Fed up of never ending ironing?*

My ironing service is definitely a way of buying back much needed quality time in a busy life!

**Tracy Hume**

**07527 796523 or 01969 666048.**

Can arrange collection/delivery

## Ramble On

I've planted a variety of rambling roses over the last 10 years and whilst most have done well, there have been disappointments. We obsessives love a good list and here's one - recently planted ramblers, worst to best with explanations.

You've greener fingers than I have if you've had success with Albertine. It's a very popular rose and for a couple of years you can see why. The pale pink flowers are sweetly scented and borne throughout summer, so what's not to like? Well, after the honeymoon period, I've found leaf drop or discolouration a problem. The bonniest of blooms on naked stems is not a good look, so not for me.

On to Wedding Day and wow, can this one ramble. Blink and it's covered Texas. The trusses of pure white, scented flowers fade to pink in late summer and are complemented by the soft green foliage. If you're after concealment, then this Russian Vine of the rose world is for you. Effortlessly covering barns and bungalows or clambering up trees, it can even (with permission) engulf the neighbour's leylandii hedge and that takes some doing.

Not quite as aggressive is Seagull. All ramblers do well planted in deep, well worked soil with plenty of well-rotted manure added. 25 feet is soon reached so again, initial support of wires on a wall or building is necessary. The tiny white scented flowers with yellow stamens are a delight and the greyish green foliage is particularly attractive.

Improving all the while but not quite making top spot is Evangeline. I've planted this Victorian favourite in several Dales gardens, and it's a charmer. Rampant like the rest of the family, this beauty's jolly little pink flowers fill the air with sweetness in late summer. A black spot threat is threatened in some pessimistic catalogues, but I've never experienced a problem.

**Music Tuition for all ages with**  
**[www.colinbaileymusic.co.uk](http://www.colinbaileymusic.co.uk)**  
**07711 211169**

**Drums & Percussion; Vocals;**  
**Piano & Keyboards; Music Theory;**  
**'Get Musical' Workshops.**

Drum roll for the best of the bunch.... rosa Helenae. Again, I have used this absolute darling in several gardens in the Dales and earned several brownie points. At 30 feet plus, it's no shrinking violet so, as for all ramblers, plenty of light and room. The pale-yellow/white flowers last for weeks and the leaves remain deep green and disease free. Ah, I feel the warm glow of an approaching list. Bonus points here for 1. Intense perfume, 2. A bee and hover fly magnet, 3. Bright orange hips in Autumn and 4. Easily propagated by layering - simply bend a branch to the ground, peg down on a leaf joint and cover lightly with soil. Give it a year and there's the pitter patter of tiny, thorned feet...

Maintenance on ramblers is straightforward: cut out any dead or diseased stems in spring and trim lightly after flowering to your required shape and size. After 3 or 4 years cut out a quarter of the flowered stems at the base to prevent overcrowding and encourage new growth.

Well, planning's fun but unfortunately 90% of gardening appears to be hard graft and there's a rebel lawn needs taming. Off we go.

**Ed Gardener**

***Slimming***  
—WORLD—

touching hearts, changing lives

Leyburn  
Methodist Hall  
Every Wednesday  
9am, 4.30pm &  
6pm

No need to book  
Just come along and start your journey to a  
slimmer you.

Call Helen for more info **07969 559998**

## Solid Joinery Solutions

All aspects of joinery and carpentry undertaken.  
Bespoke joinery solutions made to your requirements.

Covering all Yorkshire Dales and surrounding areas

Contact Paul for a free, no obligation quote  
on **07980 167987**

Email: [enquiries@solidjoinerysolutions.co.uk](mailto:enquiries@solidjoinerysolutions.co.uk)

Web: [www.solidjoinerysolutions.co.uk](http://www.solidjoinerysolutions.co.uk)

## Notes from Thorney Mire

### Late Spring

I don't know if it is my imagination, but we seem to have had an abundance of large clouds of white blackthorn blossom lining the hedgerows this Spring, accompanied by bright yellow ribbons of dandelions alongside the road verges. This has made a really cheerful sight driving along the lanes in the Spring sunshine. Although it's the middle of May some larger trees have yet to come into leaf. The ash tree by the barn is very slow to open up, but the bird cherry trees in the field have been covered in lovely white blossom. Now I need to keep a look out for the tent caterpillars which could invade them. Spring has seemed to creep up on me quickly this year. It doesn't feel like two minutes ago I was walking along the lane looking for primroses and coltsfoot and now we have Welsh poppies, water avens, marsh marigolds, ladies smock, Jack by the hedge, pink campion, pignut to name some of them.

The squirrel survey which takes place in our wood in May each year has shown that the red squirrels are still active and the last grey squirrel has now been trapped. We seem to have had more grey squirrels than usual in the last twelve months. Many years ago I was on holiday in Bournemouth where there were a few grey squirrels running around in the parks. They were a bit of a novelty to me then, not having squirrels where I previously lived. I returned to Bournemouth a few years ago and the parks were literally overrun by grey squirrels. No attempt seems to have been made to control their numbers. I, now living in a red squirrel conservation area was horrified and dismayed. There is a colony of red squirrels on the Isle of Wight and Brownsea Island, Dorset, but thankfully there is a stretch of water separating Bournemouth and surrounding areas from the islands. If you look on the internet for the best places to see red squirrels, the Yorkshire Dales doesn't even get a mention.

Even though I live in quite a remote area, it's not quiet as there is the constant sound of birdsong. The rooks and jackdaws in the top wood make their presence felt especially the young ones when the adults return with food and I never get tired of hearing the curlew. A blackbird has been singing sweetly to me and the robin lets me know he's there if I get too close to the tree where he's trying to serenade a partner. I heard a cuckoo on May 1st and I've heard it

every day since if I'm outside. At first it was just a short "cuckoo, cuckoo" but now it's calling for longer. It's been in competition with two very vociferous wood pigeons which seem to spend all day calling to each other. When the wood pigeons stopped for breath, the cuckoo seized its chance and called while there was a lull in the wood pigeons' courtship. There were times though when the cuckoo must have thought, "If you can't beat 'em, join 'em", and sang at the same time as the wood pigeons. As I say, it's not quiet where I live. As well as the usual resident birds we are having frequent visits from a pair of siskins and the woodpecker makes an appearance from time to time. A male and female willow warbler have been seen in the garden and they must have nested locally because there is a young one. The juvenile perched on the edge of a wall basket just outside the kitchen window, so I had a good view of it. The female parent flew towards it but couldn't land very well, so hovered above the baby. Both birds simultaneously opened their beaks. The food fell from the mother's beak and landed into the mouth of the young one with great precision. It was like mid-air refuelling, avian style.

In my last article I mentioned that I had seen some lapwings in the field along the lane but didn't know if they were staying or passing through. I'm pleased to say that two pairs have stayed. I think they must have nested because I saw two lapwings attacking a pheasant which must have strayed too close to the nest. They were dive bombing the pheasant and coming very close to its head, but the pheasant refused to move. A third lapwing joined in the attack but still the pheasant stood its ground. It was only when the lapwings gave up and flew away that the pheasant decided to move on.

As we have not had a very dry Spring and I've not been outside as often, I've not been able to keep a check on which birds are nesting in the garden. I do know that the goldfinches are making a home in the top of the tall cypress tree where they normally nest and where our two resident collared doves, Darby and Joan, nest in the lower branches. This year Darby and Joan abandoned the cypress tree and went more upmarket and nested in the Nordmann Fir tree in the field, which means I've not been able to observe them quite the same. I do know that they have produced at least one offspring as one of the adults brought it to the bird feeder. The older bird like a good parent perched on the roof of the outbuildings keeping watch while the younger

bird fed. It was not very steady on its legs which produced some comical manoeuvres.

Two pairs of swallows have returned and are determined to nest in the out buildings and I am equally determined that they are not. Yes I know they've flown all the way to Africa and back, but it took me as long to clean up the outbuildings last year after they had nested in there, as it took them to fly to warmer climes. There are plenty of nice dry eaves where they can nest, (hopefully not above a bedroom window!) and a barn with easy access, so it's not as though they are short of real estate. They are very determined though. They are skimming around the courtyard looking for access and they also seem to have a lookout post. As soon as we open the door to the outbuildings they fly in just missing the top of our heads. We have to wait for them to fly out then quickly close the door. The battle is on!

Sylvia Turner

## STURDY TRAVEL

INDEPENDENT TRAVEL SPECIALISTS

Now at Toll House (Next to Spar)

Market Place, Hawes DL8 5QX

Also at 1, Golden Yard, Market Place,  
Leyburn, DL8 5AS

For all your travel needs, home and  
abroad

**Call: 01677 422826**

Email: [robert@bakewelltravel.co.uk](mailto:robert@bakewelltravel.co.uk)

Part of Bakewell Travel

ABTA No. P8596

## Alex Kravchenko

BSc (Hons) MChS

**Chiroprapist / Podiatrist**

Member of the Health Professions Council

**Practising at**

**Yorkshire Foot Clinics**

**25, Frenchgate, Richmond DL10 4NZ**

**Bishop Auckland/ Hawes 667449**

**Clinic Tel 01748 850020**

Email: [yorkshirefootclinics@yahoo.com](mailto:yorkshirefootclinics@yahoo.com)

## Upper Wensleydale Ladies Luncheon Club

The Luncheon Club meets on the **4th Wednesday in the month** at Street Head Inn at **noon for 12.30pm** lunch.

Our new programme starts on **Wednesday, September 25th** with a talk by Colin Bailey, Blue Box Creative and Performing Arts. On **October 23rd** we have Flower Demonstration by Rosemary and Twine.

Why not come along and join us, we are a small group and would make you very welcome. Anyone wishing to join please contact **Ray Wilkinson** on **01969 663613**, or **Sue Ryding** on **01969 663551**.

## Upper Wensleydale Property Services Ltd

**All aspects of domestic plumbing  
and heating work undertaken  
Bathroom supply and fitting, wet  
room installation and tiling  
Heating systems, and oil boilers  
and tank installations**

**Please contact Malcolm  
Grant on 07855 191466**

**email: [mgwensleydale@gmail.com](mailto:mgwensleydale@gmail.com)**

## McGARRY & Co. Solicitors

**From small personal  
matters to larger  
commercial transactions,  
for personal advice in an  
impersonal world.**

**Market Place, Hawes,  
North Yorkshire DL8 3QS  
Telephone No 01969 666290  
or email  
[office@mbmcgarry.co.uk](mailto:office@mbmcgarry.co.uk)**

**Farm and Home visits by  
appointment**

Regulated by The Solicitors Regulation Authority  
No. 553987



## Heavens Above

If you're out and about on a clear night for the next couple of months look north at twilight and you may be lucky enough to spot a display of rare and beautiful Noctilucent Clouds. They're the highest clouds in the atmosphere forming around the Earth's poles about 50 miles up. 'Noctilucent' comes from the Latin for 'night shining' as they stay illuminated by the Sun, even though its well below the horizon, long after other clouds have faded into the darkness. Their ghostly silvery-blue strands and bands are probably caused by ice freezing around tiny particles of interplanetary or volcanic dust and a good display can stretch right across the sky - a striking sight in the deep blue twilight and a great photographic subject if you have a camera capable of taking long exposures and a tripod to hold it steady.

It's another disappointing month for planet spotting early on in the evening as nearly all the action occurs after midnight in the wee small hours. The ringed planet, Saturn, is first on the scene rising in the east around **1.00am**. Distant Neptune, the furthest planet from the Sun, follows on half an hour later at **1.30am** but you'll need binoculars to catch sight of it. Mars, about the same brightness as Saturn, comes into view at **2.30am**. A slim crescent Moon lies to the left of it on **June 3rd** - a striking sight again best viewed with binoculars. Venus and Uranus aren't visible this month but mighty Jupiter, the largest planet, makes up for their absence shining brilliantly low in the north-east a little before dawn from the middle of the month onwards. Right at the end of June you might

just catch the innermost planet, Mercury, very low in the north-west just after sunset. It sets around **10.30pm**.

This year's Summer Solstice - Midsummers Day - when the Sun reaches its most northerly point in the sky, falls on **June 20th** when we get the longest period of daylight and the shortest night. It's not the best time of the year for spotting some of the fainter constellations due to the summer twilight which lasts nearly all night long. The brighter patterns are no trouble at all, however, especially The Lyre, Aquila the Eagle, and Cygnus the Flying Swan. Their brightest stars - Vega, Deneb and Altair - make up the famous Summer Triangle asterism high in the east at the moment.

The Milky Way runs right through the middle of the Triangle as it flows up from Scorpius and Sagittarius in the south towards Perseus in the north. If you can find a really dark location and allow your eyes to adapt to the darkness, you'll be surprised at how bright the Milky Way can be. It's absolutely jam-packed with stars, open clusters and nebulae - a magnificent sight in binoculars or a wide-field telescope. Once seen, never forgotten. Have a look for yourself and you'll see what I mean. Have clear skies!

Al Birio

## AYSGARTH — FALLS — HOTEL

Newly refurbished hotel, bar and restaurant  
adjacent to Aysgarth Falls.  
Bar Menu served daily 12 noon until 8pm



Palmers Restaurant open daily 6pm - 8pm  
Call or book online - 01969 663775  
[www.aysgarthfallshotel.com](http://www.aysgarthfallshotel.com)

## Dales Garage

Services we provide

Exhaust, Diagnostics, Brakes, Welding, MOT,  
Suspension, Timing Belts, Clutches, Batteries,  
Tyres, Services. All makes and models.

Unit 2, Hawes Ind Estate, Brunt Acres Road  
Hawes DL8 3UZ



[www.facebook.com/dalesgarage1](http://www.facebook.com/dalesgarage1)

Call - James 07399 513605  
Tyler 07376 487776



**LIBERTY**  
FABRIC

Quality fabrics for quilting,  
dressmaking, etc., sewing  
accessories, a little wool/yarn.  
**Abbottstone House Collection,**  
**Now at Unit 5 Raynes Ct,**  
**Hawes, DL8 3UW**  
**☎ 07921 058803**



## Introducing Wellness Walks to Upper Wensleydale

Some readers may already know Jo from ReFlex Orthopaedic Massage who delivers treatments for musculoskeletal conditions in Hawes. Jo got her Mountain Leader qualification earlier this year and has decided to put it to good use in our area, leading walks for people with low mental health in and around Upper Wensleydale.

The monthly walks are on the **third Thursday of each month** from May and will vary in destination, distance and difficulty. Jo says she is keen to hear what people would like – a challenge, an amble, the chance to walk and talk

in a supportive environment, or simply be out in nature taking in the sights, sounds and smells around us. As with all Wellness Walks leaders, Jo has completed her Mental Health First Aid certificate, so you know you will be in safe hands.

The next walk is on **Thursday, June 20th** and will be heading up Wether Fell to the spectacular 614m summit of Drumaldrace.

The walks are totally free to the user and all you need to do is book on to the walk on the Wellness Walks website – [www.wellnesswalks.org.uk](http://www.wellnesswalks.org.uk). Keep your eye on the website for details of upcoming walks throughout the rest of the year.

## Applegarth Couture

[www.applegarthcouture.co.uk](http://www.applegarthcouture.co.uk)

Made to measure  
Wedding, evening and daywear,  
tailoring and alterations.

Contact: Rebecca Atkinson,  
Aysgarth

01969 629398 or 07521 030870

## DALE HEAD GARAGE

Town Head, Hawes

Tel.01969 667483

Fuel Available 24/7

Your local family owned Coach Operator



## COACH HOLIDAYS and FULL DAY EXCURSION PROGRAMME

Call 015242 41330 for our current brochures or visit  
our website to view up and coming Holidays  
and Day Trips

Email: [enquiries@bibbys.co.uk](mailto:enquiries@bibbys.co.uk)

Website: [www.bibbys.co.uk](http://www.bibbys.co.uk)



## HAIR, NAILS AND AESTHETICS

Aqua Facial  
Micro Needling Facial  
Scalp Micropigmentation  
IPL Laser Treatment

Thread Vein Removal

Skin Tag Removal

Brow Microblading and Ombre

Tel Hawes 01969 667449

[info@twisteddah.com](mailto:info@twisteddah.com)

## D BUSHBY Joiner/Cabinet Maker

Doors, windows, staircases etc.  
made to measure.

Skirtings, doors, shelves fitted and  
many more odd jobs.

For a prompt and efficient service ring

David Bushby: 01969 666048 or  
07980 201579

## WANTED - SCRAP CARS AND COMMERCIALS

FREE collection from all areas.

[www.scrapcarmacumbria.co.uk](http://www.scrapcarmacumbria.co.uk).

07825 293099

## Help the YDRT Remove Invasive Species!

This time of year is the perfect time for removing Invasive Non Native Species (INNS) from rivers and becks. One of the most prevalent species, Himalayan Balsam grows and spreads quickly, reaching heights of 2 metres so crowding out our native species which are essential for the biodiversity of riparian borders. Dying back to nothing, the plant also leaves banks bare, exposed and susceptible to erosion throughout the winter months.



There are three ways you can get involved and help us and Yorkshire Wildlife Trust:

If you own land beside Gayle Beck or downstream towards the River Ure, please get in

### Tuesday Hawes Fish Market

Also door to door delivery every **Friday**. Pre-order or just turn up on a **Friday** at

Askrigg Stone Cross. **9.30am to 10.45am**  
Bainbridge playground. **11.00am to 11.30am**

West Burton **12noon to 12.30pm**

Thornton Rust W.I. Hall **12.45pm to 1.00pm**

Mobile **07711 989590**

Facebook Hawesfishmarket;

Email Hawesfishmarket@gmail.com

### FOR ALL YOUR SEWING NEEDS

Contact. Sheila Kearton at  
Woodhall, Askrigg

Alterations and custom soft furnishings  
CURTAINS, ROMAN  
BLINDS, CUSHIONS  
DRESSMAKING AND  
REPAIRS



Tel **01969 663484** or **07800 576925**

touch as we'd like to include your land in our INNS removal project.

If you'd like to join us as a volunteer and learn how to spot and remove Himalayan Balsam and other INNS - get in touch. Full training given and no prior experience is required.

If you'd like to take part in INNS mapping for the Ure catchment please get in touch.

Finally, did you know you can pull up Himalayan Balsam if you see it on a Right of Way? Please help by doing this if you are sure you have identified the species correctly.

Reducing the hold this plant has in the Ure catchment will help to protect becks and rivers, reducing bankside erosion and improving habitats for many species.

Contact us at [volunteering@ydrt.co.uk](mailto:volunteering@ydrt.co.uk) or for further information [visit: www.ydrt.org.uk](http://www.ydrt.org.uk)

**Temptations Craft  
Boutique**

**Pennine Outdoor  
Fabrics**

**31 Main St Bentham  
015242 61868**

A treasure trove of fabulous fabrics!

Quilting and Dressmaking

Water Resistant and Breathable

Buckles, Webbing and Haberdashery

Brother Sewing Machines

Yarns and Patterns

[www.temptationsbentham.co.uk](http://www.temptationsbentham.co.uk)

[www.pennineoutdoor.co.uk](http://www.pennineoutdoor.co.uk)

**O'REILLY**

Chartered  
Accountants

At O'Reilly's we provide a broad range of accountancy and taxation services to our clients.

Our friendly and approachable team are dedicated to delivering a high standard of service throughout the year.

We act for many individuals and businesses with different levels of complexities.

For more information visit our website at [www.o-reilly.co.uk](http://www.o-reilly.co.uk) or contact us on **01969 667428** to arrange a free initial consultation.

## Rage Virus Arrives in Redmire

A number of years ago, a highly contagious, aggression-inducing virus called the 'Rage Virus' was unleashed in Great Britain after an infected chimpanzee was freed from its cage in a laboratory in Cambridge by a group of animal rights activists.

Today, plans are underway to show a young boy's journey of survival and discovery in the resulting post-apocalyptic world which includes Redmire Falls!



Preparations for filming the feature film '28 Years Later' during the summer are taking place in the field by the River Ure at Redmire. The film is a sequel to the horror films '28 days Later' and '28 Weeks Later' and will be directed by Oscar winner Danny Boyle whose previous works include Slumdog Millionaire and Yesterday as well as the 2012 Olympic Games Opening Ceremony.

The film is written by Alex Garland who wrote 28 Days Later but the plot is being kept secret. Jodie Comer, Aaron Taylor-Johnson and Ralph Fiennes were the first names to have signed up to appear in the movie. The original film starred Peaky Blinders actor Cillian Murphy and it is being reported that the Irish actor may appear in the latest film too.

Residents in Redmire received a letter from DNA Films Ltd advising them of the activities taking place, with site preparations occurring in May, and plans for filming in July and August and reinstatement of the area during September. Residents should receive another letter with more details of the filming nearer the time.



The film is released on **June 20th 2025**.



**nh flooring**

**FREE QUOTES**

**Carpets • Laminates • Vinyls • LVT  
Solid & Engineered Wood • Accessories**

## For All Of Your Flooring Needs!

NH Flooring in Richmond can fit quality flooring to any Houses, Apartments, Offices, Holiday Lets, Hotels, Pubs, Vans and anywhere else you want it.

### We offer a complete flooring service including:

Supplying, Fitting, Screeding & Levelling,  
Repairing, Uplift & Removals, Trimming,  
Edge Whipping, Cladding and much more.

## NH Flooring - Richmond

[www.nhflooring.co.uk](http://www.nhflooring.co.uk) 01748 822834

Unit 6 Borough Court, Borough Road, Richmond. DL10 4SX

## Firewood

### Seasoned hardwood logs

**Tel: 01969 662692**

**Mob: 07970 629227**

## Better Health Massage

Mobile Therapist, 8am to 8pm, 7days  
Improve overall general well being, inside and out.

**Ruth Boddy** MFHT, ITEC Dip. Massage

[ruth@betterhealthmassage.co.uk](mailto:ruth@betterhealthmassage.co.uk)

Fully qualified and insured

**07773 781803**

[www.betterhealthmassage.co.uk](http://www.betterhealthmassage.co.uk)



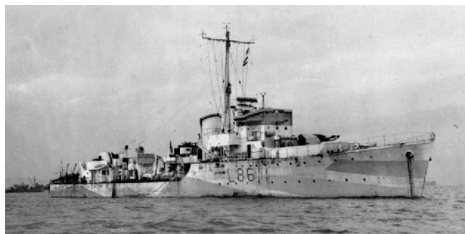
## From the Norah Worth Collection at the DCM

### HMS Wensleydale 1942-1944

HMS Wensleydale was a Hunt Class Type III escort destroyer, designed for use as general anti-submarine and anti-aircraft escorts for convoys. All the ships in this class were named after fox hunts. The official crest is the coat of arms of the Chapman family, several of whom were masters of the Wensleydale Hounds, and a hunting horn. The mascot of the ship was a mask of a fox killed by a legendary hound 'Magic', given to the ship by Major R.H. Whitehead.



HMS Wensleydale was commissioned on the Clyde on October 20th 1942, and had four 4 inch guns, four 2 Pounder pom poms, two torpedo tubes and carried about 110 depth charges. Her crew numbered 170 and her first commanding officer was Lieutenant J.A. McClure RN.



Although she only saw action between 1942 and 1944, she took part in many operations including the D-Day landings in Normandy and had many successes against the enemy, including the sinking of two U-boats.

On November 4th 1942 the ship left for Tobermory on the island of Mull for initial work-up and then on to Scapa Flow in Orkney for sea going trials and training. In December, she began escort duty with one of her first jobs being to escort a convoy from the UK to Gibraltar, going well out into the Atlantic to avoid the U-boats. In January 1943 she returned to Londonderry and spent the rest of the year escorting coastal convoys along the English Channel with occasional sorties into the Bay of Biscay to protect the Atlantic convoys. She saw action in the English Channel where German Elbing Class destroyers were patrolling. On

May 29th 1943, she was the victim of friendly fire by Coastal Forces Motor Gun Boats who thought she was an enemy vessel. A shell passed through the sick bay, went through a medicine cupboard and bulkhead, slightly wounding the doctor. He was the only casualty in two years of service.

In June 1943, Lt. McClure relinquished command due to ill health, and Lt Goodfellow RNVR took over. In July HMS Wensleydale, together with HMS Melbreak and HMS Glaisdale engaged a German convoy escort of five minesweepers off Ushant, and sunk one of them. She was also involved in various exercises in late 1943, including a mock invasion of the port of Boulogne to discover the strength of the Luftwaffe. Early in 1944, she took part in exercises off Slapton Sands in Devon, as part of the training of American soldiers for D-Day.

On June, 6th HMS Wensleydale escorted an American convoy into OMAHA beach, and for the next three months, she was patrolling the beaches and providing anti-aircraft cover. In company with two other destroyers, she sank two U-boats between Beachy Head and the Isle of Wight and saw action with German E-boats from Le Havre and Cherbourg.

In the latter months of 1944, she went back to East Coast duties, based at Sheerness and Harwich. On the night of November 20th/21st 1944, she left Sheerness to patrol the Dutch coast but due to bad weather conditions, she returned and anchored off Southend Pier. During the night she was rammed on the port side, and water flooded into the engine room and damaged the electrics and heating. An SOS was put out and tugs towed her round to Sheerness. As a result of the collision, she was reduced to the reserve and declared a 'constructive total loss' and ended up in West Hartlepool. On March 1st 1945, the crew held a mock funeral of HMS Wensleydale, with a coffin carried around the ship and slipped over the side. On February 25th 1947 she was towed to Blyth where she was broken up for scrap.

HMS Wensleydale has always been remembered, and on October 24th 1992, a service was held at St Margaret's Church Hawes, to commemorate the 50th Anniversary of her commissioning. In the church there is the Ensign of HMS Wensleydale, lowered for the last time on the paying off of the ship on May 17th 1945.

## Leyburn Arts & Community Centre

May was a busy month at Leyburn Arts and Community Centre, a very successful Plant Fayre, a sell-out concert of live music from Chris Bannister with his tribute to John Denver's timeless music, followed by 42nd Street, the live event cinema filmed in London's West End. Our Exhibition cinema screenings are proving popular too, the John Singer Sargent one being well-attended. These are filmed at famous museums and art galleries around the world showing their collections without us having to leave Wensleydale! The next is in June, showing some of the masterpieces from London's National Gallery.

We were very pleased to recently receive a cheque for £2,000 from Leyburn Rotary group towards our Community Shed. Donations of this kind are very much appreciated, not just for the money but also for the faith they have in our volunteer's efforts to bring new opportunities to the locality.

## BARTLETT ELECTRICALS

| Domestic Appliance Servicing |  
| Installation |  
| Electrical Services |  
| Repairs |  
| Sales |  
| All makes and models |

[www.BartlettElectricals.co.uk](http://www.BartlettElectricals.co.uk)

Tel : 07920 401042

Email: [Ben@BartlettElectricals.co.uk](mailto:Ben@BartlettElectricals.co.uk)



Registered  
Heating  
Business



## J.Parfitt Plumbing & Heating Ltd

All aspects of domestic / commercial plumbing and heating work undertaken

Phone: **01969 650665**

Mobile: **07882 005261**

[www.parfittplumbing.co.uk](http://www.parfittplumbing.co.uk)

A reminder that Cuppa Connect, continues to be on the **2nd Friday of the month**, between **10.00am - noon** where various experts such as Carers Plus and Citizen's Advice are on hand to offer help and assistance.

We wish you all a lovely June with lots going on at the Centre and in the area, including the Community Arts Festival in which some of our groups are participating, and our concert, 'My Generation: The Solid Gold 60's Show, plus as always a great selection of films. Take a look at the website or call in for a flyer.



**Springbank  
Logs**

## Seasoned Firewood Logs For Sale

Hardwood and Softwood available.  
Bulk Bags, Bulk Loads and smaller bags available, also kindling bags.  
Can deliver locally – Hawes Area

**01969 667916** after 5.00pm

Mobile: **07974 507825**

any time; P.O.A

## JOHN & TED DINSDALE

Builders ~ Roofers ~ Renovations ~ Extensions

*All aspects of property maintenance.*

*Fireplaces, Wood Burners supplied and fitted*

**01969 667 718 ~ 07511 424 865**

## MFW Aga & Boiler Services

Specialising in the servicing of Aga / Rayburn cookers and domestic oil boilers.

All Dales area covered

For service please contact Mike on:

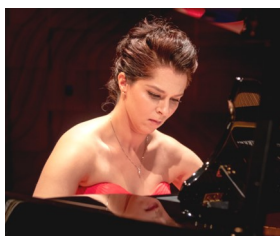
Phone: **01609 779751** Mobile: **07731 349276**



## Wensleydale Concert Series - June Concerts

We have two lovely contrasting concerts in June. Both feature the outstanding international pianist Daniel Grimwood who is well known to our audience as he has introduced us to numerous musicians over the years. He has won awards and praise for his newly printed edition of the Piano Etudes of Adolf von Henselt for the prestigious publisher 'Peters Edition' and has become a recognised expert on the work of the composer. Since we last saw him, he has also started a Research Fellowship at the University of York.

In the first concert on **Saturday, June 15th**, Daniel is joined by Australian pianist Yasmin Rowe. I first met Yasmin before she emigrated to Australia and invited her to play for us, which she did about 6 years ago after her move to Melbourne.



Until last year Daniel and Yasmin had never actually met and I suggested they meet and play together last year when she was in the UK. Their first meeting was

electric and led to a number of four hand recitals and I knew I had to get them to come and play for us as soon as Yasmin was back in the UK. Their programme is incredible: a lovely work by Schubert followed by a sonata by the wonderful, but sadly rather neglected, romantic Anton Rubinstein. The second half will be Stravinsky's Rite of Spring - which they are learning (a truly Herculean task) just for this concert. It was my idea - I hope you enjoy it and they forgive me!

The second concert on **Friday, June 21st** sees Daniel joined by the Azerbaijani-British virtuoso violinist Nazrin Rashidova. They will be performing a wonderfully varied programme including music by Pärt, Grieg, Godowsky, Moszkowski, Szymanowski and Sauret. Nazrin started performing at the age of 3 and was accepted at the Royal Academy at 15. She performs all over the world and has received high praise. The American Record Guide said her



"consummate technique and unabashed bravura wedded to a great sense of style... are an example to nearly every violinist alive". Daniel and Nazrin have performed together many times and recorded together. This will be a very special performance.

As usual full details and tickets are available via our website [wensleydaleconcertseries.co.uk](http://wensleydaleconcertseries.co.uk). Tickets are £18 in advance or £20 at the door (£1 for full time students) and can also be purchased by phone on **0333 666 3366** - quote date, and names of artists.

Carol Haynes



## Visitor Centre

Open Daily

### New Look! Calvert's Restaurant

Join us for lunch and enjoy our new summer menus alongside delicious monthly specials in our newly refurbished Calvert's.

### 1897 Coffee Shop and Garden

Coffee, cake and light bites with stunning views.

### Yorkshire Wensleydale Cheese Experience

Enjoy daily demos, complete the Cheese Trail Quiz, take a peek inside the Creamery and find perfect pairings in our 'Taste of Yorkshire' Tasting Room.

Kids Go Free at weekends & school holidays.

### Cheese and Gift Shop

Complimentary sampling & fantastic gifts  
[wensleydale.co.uk](http://wensleydale.co.uk)



Village Pub, Restaurant and Hotel

Located in Askrigg, in the heart of Wensleydale

12 Comfortable En-Suite Bedrooms

Double & Twin Rooms

Pub & Restaurant

Great Food and Drinks

Private Car Park

Beer Garden

Main Street | Askrigg | DL8 3HG  
01969 650515 | [info@middlehouseaskrigg.co.uk](mailto:info@middlehouseaskrigg.co.uk)  
[www.middlehouseaskrigg.co.uk](http://www.middlehouseaskrigg.co.uk)

## BAWB Schools News

Lighter nights, lighter mornings, SATs are finished – bring on the summer!

We have seven weeks which are packed with trips, residentials, cluster sports and experiences. Learning outside the classroom is definitely at the heart of this half term!

We are thoroughly enjoying continuing our street dance lunchtime club with Miss Hannah from Dales Dance. We are building on our recent success, winning Gold in the local dance festival which was judged by A-level dance students from Richmond School. Well done to everyone involved!

Straight after our half term break, our Year 6 will be completing their Bikeability with Stage1Cycles. Cycling skills is something that BAWB pride themselves on, with balance bike sessions in Early Years, after school cycle skills club, and Bikeability in Y6, such important life

skills. Staying on the cycling theme, our Early Years and Year 1 are excitedly planning their annual summer cycle trip from Wensley to Bolton Hall, by kind permission of Bolton Estate. We are keeping fingers crossed for dry weather again this year!

We are looking forward to running our termly nursery taster sessions on **Monday and Tuesday, July 1st and 2nd from 1.30pm - 3.00pm.**

If you have a rising 3-year-old we look forward to welcoming you to visit our lovely Early Years setting at Bainbridge Primary School.



Please contact the school to register your interest [bawbadmin@b-a-wb.co.uk](mailto:bawbadmin@b-a-wb.co.uk) or 01969650331.

You can keep up with our weekly newsflash at [www.b-a-wb.com](http://www.b-a-wb.com).



### **James Peacock SOLID FUEL MERCHANT Bainbridge**

Good quality fuels at competitive prices.  
Smokeless Fuel, Logs and Sticks all available.  
Deliveries in Wensleydale, Swaledale and  
Coverdale. No delivery too small.

### **James Peacock PRIVATE HIRE Bainbridge**

4-8 seats, Airport runs, pubs, stations, walking  
or cycling holiday, luggage transfers.....

**Tel: 01969 650212 / 650465**

Email: [james-peacock@btconnect.com](mailto:james-peacock@btconnect.com)

Web: [www.james-peacock.co.uk](http://www.james-peacock.co.uk)



**Yore Mill**  
CRAFT SHOP & GALLERY

We have a wide selection of artists and makers from Yorkshire and across the North of England overlooking the beautiful Aysgarth Falls.

Check our website for further details and opening hours.

**Yore Mill, Aysgarth DL8 3SR**

Web: [yoremillcraftshopandgallery.co.uk](http://yoremillcraftshopandgallery.co.uk)  
01969-662829

## **COPY SHOP PRINTING ~ PAPER SCANNING & LAMINATING**

*Wensleydale Press*

Burtersett Road, Hawes 01969 667575  
[wpress@tiscali.co.uk](mailto:wpress@tiscali.co.uk)

## **Cumbria Stove Centre**

Supply and installation of wood,  
coal and gas stoves.

- ◆ Flue and chimney lining services.
- ◆ Inglenook specialists.
- ◆ Fully qualified and experienced Hetas engineers

01539 821061 (day) - 01539 625227 (eve)  
**SHOWROOM: 34a, Main Street, Staveley**

***JUNE WHATS ON LISTING;  
please add these dates to your Diary***

**June**

- 5 Swaledale Festival Concert. St Andrew's, Aysgarth. 7.30pm. See p.6.
- 6 Swaledale Festival Concert. St Andrew's, Aysgarth. 4.00pm. See p.6.
- 6 Beacon Lighting. Brough Hill. 9.15pm.
- 7 Dominoes. Carperby Institute. 7.30pm.
- 8 Craft Session Drop-in. Sycamore Hall, Bainbridge. 10.30am. See p.5.
- 9 - 30 Wensleydale Community Arts Festival. Various events. See p.34.
- 15 Wensleydale Concert Series. St Andrews, Aysgarth. 7.30pm. See p.18.
- 15/16 Exhibition of the Talents. Quaker Meeting House, Bainbridge. 11.30am. See p.37.
- 16 Tours at Gayle Mill from 10.00am. See p.23.
- 16 Refreshments at Beamish Car Rally in Bainbridge. From 11.00am.
- 16 - 27 Sedbergh Music Festival. Various events. See p.33.
- 19 Charity Bingo. Hawes Market Hall. 7.00pm.
- 19 Penhill Ladies Meeting. Carperby Village Institute. 7.30pm. See p.28.
- 20 Wellness Walk. See p.13.
- 21 Leyburn u3a Open Day. LA&CC. 10.00am. See p.28.
- 21 Wensleydale Concert Series. St Andrews, Aysgarth. 7.30pm. See p.18.
- 30 Carperby Open Gardens. 11.00am. See p.3.
- 30 Richmond Chamber Orchestra Concert. Grinton Church. 2.30pm. See p.27.

**News from Dales  
Countryside Museum**

Opening times: Daily **10.00am to 5.00pm** February to October, **10.00am to 4.00pm** November and December. Closed Christmas Eve to Boxing Day and January 6th to 31st. Last entry one hour before closing.

Contact: [hawes@yorkshiredales.org.uk](mailto:hawes@yorkshiredales.org.uk) or call **01969 666210**.

**Labour of Love Exhibition – running until September 8th.**

Our latest exhibition, 'Labour of Love - Land, lives and nature in England's Upland Commons' is on show now. Over one third of England's moorland is 'common land'. Shaped by hill farming and cherished by many, upland commons are at the heart of rural culture and are vital for enriching nature. They are also at a crossroads. Affected by climate change, biodiversity decline, and shifts in UK environmental policies; there are many challenges, and there are opportunities to shape a positive future.

Over the past two years, as part of the nationwide Our Upland Commons project led by the Foundation for Common Land, Rob and Harriet Fraser have spent time in these special parts of England meeting people who are passionately committed to a positive future: farmers, landowners, conservationists, heritage specialists, ecologists, scientists and others. The exhibition offers a glimpse into the online collection of 'Commons Stories' with insights into farming, wildlife and conservation, and perspectives on how to move forward collectively to protect and enhance the landscape and its communities. Photographs, poetry and film created by farmers, multi-media artwork by Yorkshire artists, and artefacts from the museum have created a thought provoking exhibition.

**Yorkshire Dales Young Archaeologists' Club:**

In May we had fun finding out about historic games – both outdoors and in! Indoors we played Senet, an Egyptian game and Mancala which has Roman origins. We then went outside to play with wallops, skittles and a super-sized Viking game called Kubb. The club meets once a month on a Saturday morning, **10.00am to noon**. Please call **01969 666210** if you'd like to join in or email [dcm@yorkshiredales.org.uk](mailto:dcm@yorkshiredales.org.uk).

ANDREW  
**HAWKINS** BUILDING  
CONSTRUCTION CONTRACTORS

NEW BUILDS | EXTENSIONS  
BARN CONVERSIONS | ROOFING & GROUNDWORKS  
APPROVED DAMP PROOFING & REMEDIAL  
TREATMENT SPECIALISTS

**Tel: 0800 002 9779**

Email: [hawkinsbuilder@hotmail.com](mailto:hawkinsbuilder@hotmail.com)

Unit 5 Harmby Business Park, Harmby Road, Leyburn, North Yorkshire, DL8 5QA



Young people age 8 – 17 years are welcome to come along to try a session from June onwards.

**Scurry Club Pass:** If you'd like your child to be able to visit all year round, why not think about a Scurry Club Pass? Your child and an accompanying adult carer can visit all year round and kids can start collecting their squirrel badge and first stamp as soon as they visit.

**New staff:** We're really pleased to welcome Cathy Bergs as our new Visitor Centre Manager. Cathy will be working as part of the team here and will manage our team of Information Advisers.

**Going Places:** We have had our first Green Spaces Shared Places network meeting with Sunderland Culture, National Trust (Arlington Court) and the National Memorial Arboretum. Through the Going Places programme we hope to collaborate with young people to create a touring exhibition linked to our network theme. The programme is funded through Art Fund with lead support from the National Heritage Lottery Fund.

We're looking forward to seeing you in 2024 – here are our events coming up in June.

**Archaeology talk - Overground/Underground:**

**Saturday, June 1st, 2.00pm - 4.00pm.**

'Overground/Underground – a caving archaeology project in the Yorkshire Dales'. Join cave archaeologists' from UCLAN and the YDNPA archaeological team to understand more about who might have inhabited the caves in and around Ingleborough as part of our Common Cause Project. You can see the exhibits on display in the Labour of Love exhibition.

**Woolly Wanders:**

**Sunday, June 2nd, 10.00am - 3.00pm.**

Walk with Alpacas at Semerwater, enjoy a light lunch at the museum and create your own felt picture using fibre from the Alpacas. £55 Booking essential

**Flora and Fauna Walk:**

**Tuesday, June 4th, 11.30am - 3.00pm.**

£6 Booking Essential.

**Hawes Town Trail:**

**Tuesday, June 18th, 2.00pm - 4.00pm.**

£5 Booking Essential.

**FDCM field trip** - Who lived where in Askrigg in Victorian times:

**Wednesday, June 19th, 2.00pm.**

Martin Garside will lead a walk round Askrigg starting from the Market Cross.

**Looking at North Country Quilts:**

**Saturday, June 29th, 10.00am - 4.00pm.**

Day school led by members of the Quilters' Guild, looking at North Country Quilts, sources of information, history, patterns and designs. There will be the opportunity to copy and trace from books and stitch a small piece. Lunch included. £50. Booking essential.

**Geology walk:**

**Tuesday, July 16th, 11.00am - 3.00pm.**

Join our experienced Dales Volunteers on this 5 mile (8 km) walk to discover the geological forces which formed the Yorkshire Dales. Walk through the site of the former stone mines, Shaw Ghyll and visit the spectacular Hardraw Force, the highest waterfall in England. Starts at the Dales Countryside Museum. £10 plus £10 entrance fee to the Hardraw Force waterfall. No dogs allowed and booking essential.



**HAWES MARKET HALL  
SATURDAY 17 AUGUST**

**7.00 for 7.30pm**

**Ticket £25**

**Entry by Ticket only**

**from Wensleydale Press:**

**01969 667575:**



## Richmond Chamber Orchestra

*Directed by Philippa Mo*

### Summer Concert in Grinton Church

Sunday June 30th at 2.30pm

Music spanning four centuries from Yorkshire's new orchestra, including some familiar masterpieces, others perhaps less well known. Something for everyone! Including Brandenburg Concerto #3, Elgar Serenade for Strings, Vivaldi *Summer* from The Four Seasons (solo violin Philippa Mo), Vaughan Williams Five Variants of *Dives & Lazarus* (Harp Sarah Patterson). There will be a collection for the Herriot Hospice

## MICHAEL MOORE and SON BUILDER AND PLASTERER Family Business Est 1906

Alterations, pointing, stonework,  
Roof work, garden patios, paths,  
plastering, insulated plaster  
boarding,  
Over-skimming Artex walls and  
ceilings, tiling walls and floors,  
underfloor heating, PVC sash  
windows.

**Tel: 01969 667045**  
**Mob: 07968 684942**

**Hawes DL8 3NS**

# H & M

CRAFTSMEN  
Ingleton | Est. 1987

**KITCHENS · BEDROOMS · STUDIES**

High Quality, Bespoke Furniture With  
Full Design And Fitting Service



Showroom: Ingleton Industrial Estate, LA6 3NU  
015242 41535 · [kitchensandbedrooms.co.uk](http://kitchensandbedrooms.co.uk)

## Thank You

James (Woody) and Jean Metcalfe would like to thank family and friends for all the messages of get well wishes, cards, lovely flowers and gifts we have received over the last few weeks. We have certainly been overwhelmed, thankfully both recovering well.

## Notice of Wensleydale Tournament AGM

All members of the public are cordially invited to the Annual General Meeting of the Wensleydale Tournament of Song. To be held at Leyburn Methodist Hall on **Monday, July 1st at 7.00pm.**

If you are interested in getting involved in this long-standing festival, or have any comments or suggestions that you would like to put to us, please come along.

**Hearing loss shouldn't make  
you feel isolated and anxious,  
we are here to help.**



### For all your hearing needs!

- Hearing test
- Free hearing aid trials
- Ear wax removal
- Tinnitus assessment and therapies
- Hearing aid repairs and servicing

 **Hear & Now**  
Independent Hearing & Tinnitus Specialists

**CALL 01765 278 744**

8 Queen Street, Ripon, North Yorkshire HG4 1ED  
[info@hearandnowonline.co.uk](mailto:info@hearandnowonline.co.uk)  
[www.hearandnowonline.co.uk](http://www.hearandnowonline.co.uk)

## Mike Addison Optician

Market Street, Kirkby Stephen,

**017683 71555**

Email : [infoks@mikeaddisonoptician.com](mailto:infoks@mikeaddisonoptician.com)

- Providing eye care for all the family
  - Private & NHS patients welcome
  - Children & over 60's receive free eye examinations
  - Supplier of all spectacle & vision related products
- or The Shire Hall, Appleby, 017683 53199



Mike Addison FRCO C.  
**OPTICIAN**

## Hawes School News

### Muddy Paws Gardening Club:

Our new Muddy Paws Gardening and Forest Schools Club started this term in school on Wednesdays after school. We had a range of children from across school working together. The children were able to listen to nature around them and talk about the different creatures they had spotted. Then they were definitely getting muddy paws while they were planting their beans! The children have also experienced and explored snails and been able to plant their beans outside. Thanks to Mick Rhodes for his work with organising and setting up this club in school.



### Careers Opportunities/Education:

We are hoping to explore careers and opportunities for our children in school to understand the paths people take to gain their qualifications and jobs after leaving school. We are asking for your help in identifying anyone who would be able to give up half an hour to come into school to talk to children about their career paths and add some information on the jobs they do. Please contact school and speak to Miss Caygill (or e-mail the school office) if you, or someone you know, would be able to come and talk to our children about their jobs/careers and then we can arrange a group size and time that would best suit you. We are aiming to develop our children's understanding of how they are part of the modern changing world and

equip them for their future career plans. Thank you for your help with this.

### Skateboard Workshop:

At the start of May all the children across school took part in either a scooter or skateboard workshop. The weather was great for the day and all the children were able to build up their skills and confidence throughout the sessions. EYFS and KS1 were able to work on the scooters and build up their confidence on these with some tricks included! KS2 worked on the skateboards and tricks were very much their end aim.



### Father's Day at Gayle Mill

Looking for something different to do with Dad on Father's Day?

Gayle Mill, Gayle Lane, Hawes will be open for tours on **Sunday, June 16th** and is sure to be a hit. The Victorian turbine and woodworking machinery will be running and demonstrated, water levels permitting. Anyone (especially dads) interested in local history, engineering or woodworking is sure to find it fascinating.

We will be open between **10.00am and 4.00pm** for hourly tours on the hour. Last tour **3.00pm**. Suggested donation £5 per adult.



**A personal friendly service for  
'all creatures great and small'**

- Small animal consultations, diagnostics, and surgery
- Budget friendly preventative health care plans for dogs, cats, and horses
- Farm Animal routine work
- Ambulatory equine services
- In-house 24-hour emergency service for small animal, farm, and equine

**01969 422201**

**[www.wensleydale-vets.com](http://www.wensleydale-vets.com)  
[info@wensleydale-vets.com](mailto:info@wensleydale-vets.com)**



### Orthopaedic Massage

Back & neck pain, strains & sprains  
Nerve injuries, sciatica, chronic pain

**Robust Covid-Secure  
procedures in place**

**Clinic in Hawes**

**07975 999373**

Find me on Facebook [www.reflex-om.com](http://www.reflex-om.com)



## Upper Wensleydale Benefice Services in June

	<b>St Mary &amp; St John's, Hardraw 9.00am</b>	<b>St Margaret's, Hawes 10.30am</b>	<b>St Oswald's, Askrigg 10.30am</b>	<b>St Matthew's, Stalling Busk 2.30pm</b>
<b>June 2nd</b>	The Gathering – St Oswald's Church <b>10.30am</b> Family Communion			
<b>June 7th</b>	Communion at Sycamore Hall			
<b>June 9th</b>	Morning Prayer	Holy Communion	Café Style	Soup Lunch from <b>12.30pm</b> Followed by Afternoon Prayer
<b>June 16th</b>	Holy Communion	Family Service	Morning Prayer	
<b>June 23rd</b>	Morning Prayer	Holy Communion	Holy Communion	Afternoon Prayer and Pathfinders
<b>June 30th</b>	Songs of Praise	Holy Communion at <b>8.30am</b>	Forest Church with baptism	
Evening Prayer by telephone is held at <b>4.00pm</b> every Sunday. For details see our website <a href="http://www.upperwensleydalechurch.org/services">www.upperwensleydalechurch.org/services</a>				

### Working Together

I wonder if your community is involved in marking the 80th anniversary of D-Day in some way? Within the Upper Dale we will be working with our school children to mark the occasion in a fitting way through the writing and sharing of prayers, the lighting of candles to remember the fallen but to also consider how we might create a more peaceful world through considerate action and understanding. When the news is currently dominated by war and acts of violence it's a timely opportunity to pause and consider a different way of living together.

D-Day was an incredible international collaboration involving over 5,000 vessels, nearly 11,000 aircraft and over 160,000 ground troops deployed over 5 beaches in Normandy. In support, over 2 million men and women were involved in undramatic but essential and highly secretive preparations for its success. Since being a child I have

marvelled at the way in which so many different people from all over the world united in a common and shared purpose to achieve a greater good.

Having recently celebrated the church festival of Pentecost (a time when we remember how the Church came into being) I am mindful of how those early believers, filled with God's Holy Spirit, became united in a common purpose to share what they had seen and experienced of the risen Jesus. Out of that encounter in Jerusalem the whole world has been changed. It's amazing what can be achieved when we share a common purpose.

As we consider the world in which we are living there is no shortage of worthy projects to which we could offer our time and energy to help make the world a better place. I wonder what you might do?

*Peri Dave.*

## Thoralby and District WI

On Tuesday, May 21st the Thoralby and District WI met at Thoralby Village Hall. Becci Norwood, who owns and manages "Salon Boutique" in Leyburn, gave us a talk on looking after hair, nails, brows and lashes followed by a makeup demonstration.

It was a very informative talk with advice on how to use some simple tips that will help everyone, which included the importance of wearing SPF cream, using hand cream regularly, wearing rubber gloves, on how to use hair conditioner correctly, making sure that you have the correct shampoo and using the correct tools for the job.

The makeup demonstration was very useful showing us how to use skin tints, use of makeup brushes for blush and bronzes and lip gloss. Everyone enjoyed the evening and felt that there was lots of useful advice which could easily be adopted. It was also useful to have questions

answered and personal advice given after the meeting. Becci's talk was very much appreciated by everyone.

There are many up and coming events over the next few months. If you are interested in joining our WI please contact our President **Sally Stone** on **01969 663373**. Everyone is made to feel very welcome at our meetings.



## Barn Studio Bookkeeping

Bookkeeping | Tax Returns | VAT Returns

Company and Sole Trader Accounts

*Friendly service in the Yorkshire Dales*

**Terry Newman MICB | 07572 842398**

**barnstudiobookkeeping@gmail.com**

Bolton House, West Burton, DL8 4JU

### Hawes Countrystore

"For All The Farmers Needs"

**Not Just All Your Agricultural Supplies!**

**Country clothing, work ware & footwear.**

**Pet, equine, poultry, wild bird feed,**

**garden supplies and household goods!**

**Call in & see for yourself!**

**Tel- 01969 667 334 Fax- 01969 667 335**

**Monday - Friday 8am - 5pm Saturday 9am - Noon**

CBAL Fuels- 01524 599 333

Head Office (Carlisle)- 01228 552 650

Hawes @carrs-billington.com

www.carrs-billington.com Follow us

## TOM ADDISON

FINE FURNITURE

Fine quality furniture handcrafted in the heart of  
Wensleydale.

Free standing and fitted furniture designed &  
handmade to your requirements.

All enquiries welcome: 07585952951

tom@tafinefurniture.co.uk www.tafinefurniture.co.uk

## Bainbridge Vets Ltd

**A comprehensive, friendly veterinary  
service treating animals large and small  
24 hour emergency service.**

**Open Surgery**

Monday-Friday 9.00-9.30am and 2.00- 2.30pm

Saturday morning 9.00-9.30am

(appointments available at other times)

**01969 650263**

## EDGLEY GARAGE

Edgley Garage, Aysgarth,  
Leyburn, North Yorkshire,  
DL8 3AD

**01969 663094**

[edgleygarage@yahoo.com](mailto:edgleygarage@yahoo.com)

**MOT testing; Full servicing;**

**Air conditioning service;**

**Brakes, clutches and all  
general repairs to vehicles.**



## News From Sycamore Hall

### Is This It?

Hoorah! We have seen some sun! Could this be summer? Well, we hope it may be the start of summer, and that there is lots more lovely weather to come yet.

We don't need much encouragement to get outside when the weather is good, so we have been sitting outside when we can and enjoying watching the 'comings and goings'.

Our gardeners are getting busy in the greenhouse, nurturing the new season's plants and hoping for some good crops in due course. We are encouraging our residents to make good use of the summerhouse which is actually in a real 'sun trap' area.

Naturally, we have been busy with all manner of activities and entertainment. We had a good evening at our Quiz and Supper and we have enjoyed the Coffee Morning raising funds for the Yorkshire Air Ambulance. We had a quiz and some music from Austin, who lives at Kirkwood Hall in Leyburn, and who kindly offered to come along to support this event. We raised just under £300 which was handed over to Michelle Raine, the local Community Fundraising Officer for the Yorkshire Air Ambulance who joined us a few days later and talked to us about this valuable service.

We also had a great afternoon when Colin Alderson, a local chap who became a chef in the Royal Household, came along to talk to us about his life. It was absolutely fascinating - so much so, we have invited him to return again to tell us more! Of course, after listening to Colin we had to indulge in tea and cake which made for a lovely social afternoon.

We are now looking forward to commemorations marking the 80th anniversary of D-Day. We hope to join in the Lamp Light of

Peace and will be looking out for the beacon which will be lit on Brough Hill at **9.15pm on June 6th**. At some point, we will take a moment to remember all those involved in this significant event in World War II.

We have finally navigated the technicalities of running a Community Cinema, with help from Eden Arts Ltd. This means that we will be able to open our small cinema to the community in September. If you would like to join our mailing list to be sent details of our programme, please get in touch with Sonja and Karen at Sycamore Salon and Sycamore Country Store.

Meanwhile, life continues in our community where there is never a dull moment! Do come along and join some of our regular activities which include:- **Mondays at 2.00pm** Knit & Natter, **Tuesdays at 10.30am** Ron's Quiz or Karen's Bingo, **Thursdays at 10.30am** Coffee Morning, **Fridays at 11.00am** Gentle Seated Exercise.

Our small businesses (Sycamore Restaurant, Sonja's Hair Salon with Mabel and Daisy's Mini Emporium and Sycamore Country Store) are ready to welcome you and offer some wonderful facilities right on our doorstep. The Post Office is also here on **Mondays and Wednesdays between 9.00am and 11.00am** for your postal and banking needs and the Library is available all day and has internet access. Pay us a visit!

So, we hope for lots more lovely blue sky, sunshine and warmth until we report again next month. Fingers crossed! If you have any queries or would like to discuss the availability of apartments, please contact the Manager, **Nicky Cooper, on 0370-192-4055**.



Stone House Hotel

Join us on Sunday 16<sup>th</sup> June to celebrate Father's Day – with another delicious Stone House Sunday Roast – and a pint on us for Dad!

Lunch will be served between 12-2.30pm, with drinks served in the bar and outside in our beautiful garden throughout the day.

If you can't make it on the 16<sup>th</sup>, why not drop in another time and try our new summer lunch menu and selection of delicious cocktails?

Booking is advised – email [reception@stonehousehotel.co.uk](mailto:reception@stonehousehotel.co.uk) or call 01969 667571 to secure your table.

We hope to see you there!

## J. W. COCKETT and SON Family Butchers Estd. 1854

**Wholesale and Retail Bakers  
Main Street, Hawes  
Tel 01969 667251**

**Best Quality Meats  
High Class Baking  
Freezer Orders Supplied**

## Richmond Chamber Orchestra

### North Yorkshire's Pocket-sized Orchestra

The Richmond Chamber Orchestra is a brand new orchestra based in Richmond. With its 19 top quality professional, semi-pro and amateur players, and brilliant young professional director Philippa Mo, it has swiftly made an impact. Its first concert, in the Georgian Theatre, was a sell-out, and four others are already booked, including an invitation to play for the Bowes Museum in Barnard Castle. 'It's rather like having an orchestra playing in your own front room!' was one Richmond audience member's verdict: bringing music close to people in unexpected places is one of the RCO's aims.



On Sunday, June 30th at 2.30pm it plays a Summer concert in Grinton Church. The programme appropriately includes Summer from Vivaldi's 4 Seasons, and also contains a brilliantly unusual and entertaining piece by young Bulgarian composer Dobrinka Tabakova. You may have heard her anthem Praise, which was sung at the late Queen Elizabeth's Platinum Jubilee service). There's also one of Bach's revolutionary Brandenburg Concertos, and three English classics. Elgar's wistful Serenade, Gerald Finzi's glorious Romance, and Vaughan Williams' 5 Variants of Dives and Lazarus. You will probably know his Fantasia on a Theme of Thomas Tallis: the Variants are no less mysterious and atmospheric, and include a harp. There is something for everyone.

Violinist Philippa Mo, who directs the orchestra and has strong Richmond links, has performed all over the world, including at the Swaledale Festival. She has recently recorded a new solo album: her first CD was chosen as Gramophone Magazine's Editor's Choice and a 'must hear': 'superbly responsive playing .... faultless technique and unfailing insight'. She is

delighted to be part of the RCO project. 'It is so exciting to be in at the very start of a new musical venture in which the audience can get up really close to all the sound and action!' Several members of the orchestra are from the Dales, others from further afield.

Tickets are available now from [www.richmondchamberorchestra.co.uk](http://www.richmondchamberorchestra.co.uk), from [www.ticketsource.co.uk](http://www.ticketsource.co.uk) or by phone on 0333 666 3366. There will be a collection in aid of Herriot Hospice Homecare (Reg. Charity 1151298).



### JB TV AERIAL & SATELLITE SERVICES



John Banks  
Proprietor

Telephone: 07891 944175  
Email: [johnbanksshawes@gmail.com](mailto:johnbanksshawes@gmail.com)



### J Agricultural Contracting

Family Business  
based in  
North Yorkshire

Septic Tank Emptying  
Licensed waste remover  
Silo and Maze carting  
Slurry Spreading  
Stone collection and delivery  
Trailer work

[info@j-agricultural-contracting.co.uk](mailto:info@j-agricultural-contracting.co.uk)  
Mobile  
07528424711

## J. Wilman Property Clearance Solutions

Providing Property Clearance and  
Waste Removal Services in the Dales

Probate, Residential and Commercial  
Clearances, Scrap Metal Recycling,  
Yard /Garden Clearances.

All Work Considered

**Tel 07791656380 or email  
[jtw9@live.co.uk](mailto:jtw9@live.co.uk) for a  
Free No Obligation Quote.**

## Discover Leyburn u3a

Looking for a positive use of your leisure time and a chance to meet new people, then u3a could be for you. u3a is a UK-wide movement of locally run interest groups which are open to everyone who is not working full-time. They provide a wide range of opportunities to come together to learn for fun. Members share their knowledge and experience to teach and learn from each other and it's just for pleasure.

Your local group is Leyburn and District u3a which covers Leyburn, Richmond and the surrounding area and meets at Leyburn Arts Centre, Richmond Road, Leyburn.

You're welcome to find out more at our Open Day on **Friday, June 21st** from **10.00am - noon** and chat to members of the interest groups which appeal to you. There is a wide range to choose from including art appreciation, current affairs, books, Spanish, DIY and outdoor activities such as birding, croquet, cycling, gardens and walking. You are also welcome to enjoy refreshments in the garden and join in a game of croquet.

If you can't wait until then, further information is available from **Sue Mellish** on **01748 850471**, [susiemellish148@g.mail.com](mailto:susiemellish148@g.mail.com). We look forward to meeting you.

## Penhill Ladies

Penhill Ladies have one of the original Calendar Girls coming to talk to us on **Wednesday, June 19th** at Carperby Village Institute, starting at **7:30pm**. This is an open meeting and everyone is welcome to attend, for non-members there is a charge of £5 and there will be refreshments at the end of the talk.

Our speaker is Tricia, one of the original Calendar Girls and was played by Helen Mirren in the film. The Calendar Girls were a group of WI members and what they did changed the image of the WI. Since the making of the film there has also been a musical featuring lots of famous actresses.

Tricia was instrumental in starting things and she will talk to us about the initial experience and what has happened in the last 25 years. It was the 25th Anniversary of the Calendar Girls on April 1st this year, so there will be lots of interesting things for Tricia to tell us.

The charity has raised over £6 million pounds to date for Blood Cancer UK.

## The North West Living Well Group for Transport and Wellbeing

Georgina Devine has put together a presentation describing the work of The North West Living Well Group for Transport and Wellbeing, and her experiences of accessing public transport where she lives, in Sedbergh. If you would like more information or to speak with Georgina about her experiences, please get in touch with Hawes Community Office on **01969 667400**.

## St Margaret's Festival

**Saturday, July 20th** is St Margaret's Day and St Margaret's church is to celebrate this here in Hawes, **10.00am - 2.30pm**.

There will be stalls, lunches, cakes and more.

Fun for all the family.

Please come along and support your church, keep this day.

## YOREBRIDGE HOUSE



Restaurant with Rooms

Bar & Lounges

open daily

Afternoon Tea & Light Bites

served daily 12-3pm

A la Carte & Tasting Menu

served Mon-Sat 6-8pm

Sunday Lunch

served Sundays 12-4pm

01969 652060

[equiries@yorebridgehouse.co.uk](mailto:equiries@yorebridgehouse.co.uk)

Bainbridge, North Yorkshire, DL8 3EE

## D MOORE & M BLACKHURST

BUILDERS



GENERAL  
MAINTENANCE

*All types of building work undertaken  
25 years' experience ~ Free Estimates*

**07772 284602 ~ 07975 897715**

3 Woodburn, Hawes. 01969 667505



## BELLERBY OPEN GARDENS

Sunday July 7, 2024

10:00am – 5:00pm

(Last admission 4:30pm)



Come & visit our village gardens, spot the scarecrows and enjoy home-made refreshments plus a flower festival & music in St Johns Church and plant sale in our Community Garden

### New for 2024:

Vintage vehicles, "Old Bellerby" photographic exhibition & children's wildlife trail

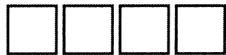
Admission:

Adults £5, Children (u16) Free

All proceeds to support local good causes

## PENNINE

# PRINT



Full Colour Print

Invites - Tickets

Brochures - Leaflets

Menus

*all at affordable Prices*

**simon@pennineprint.co.uk**

Tel: 07860 620 411

## Bear Cottage Interiors

Curtains and Blinds,

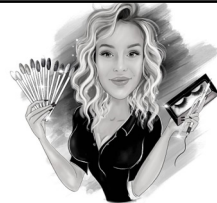
Fabric and Interiors

Market Place Hawes

**01969 666077**

Email [julie@bearcottageinteriors.co.uk](mailto:julie@bearcottageinteriors.co.uk)

Website [www.bearcottageinteriors.co.uk](http://www.bearcottageinteriors.co.uk)



*The Parlour*  
HAWES

Nails • Lashes • HD Brows • Aesthetics  
• Microblading • Teeth Whitening

07794331509



Scan the QR code  
to book



## Sycamore

## Country Store

*Now Open Inside Sycamore Hall*

OPENING HOURS:

MONDAY TO FRIDAY. 9.00 am to 1.00 pm

Selling a wide range of everyday essentials,  
including dairy products, fruit & veg, bread,  
cakes & savouries, sandwiches and sweets

**WENSLEYDALE TREE and  
HORTICULTURAL SERVICES (Est. 1995)**

**DAVID ALLEN ( HND Arboriculture)**

**CHARLIE ALLEN ( BSc Arboriculture)**

Fully insured (£5million) professional tree work:  
felling, crown thinning etc.

Petrol log splitter and woodchipper for hire.

Tree stump removal.

Hedge establishment and maintenance.

Supply/ planting of forest/ ornamental trees.

Fire tree maintenance. Weed control services.

**[treesinhawes@gmail.com](mailto:treesinhawes@gmail.com)**

**01969 667364 or 07811 576108**



## Mountain and Cave Rescue Team

On average we respond to between 40 to 50 calls each year. In 2023 we attended 46 incidents.

Incidents April 7th to May 7th 2024.  
(2 Incidents).

Incident 13: April 27th: Called by the Police following the activation of a distress beacon for a well organised DofE group. One of the group had a minor injury, quickly located having self-rescued to Gunnerside, checked over by the team.

Incident 14: May 2nd: Called by the Ambulance Service following reports of a fallen climber at Slipstones Rocks in the south of our area. Treated on scene by the team and Ambulance Service, then stretchered up the crag to the waiting air ambulance.



In an emergency DIAL 999 ask for the POLICE then Mountain Rescue / Cave Rescue / Mine Rescue / Flood Rescue.

The team is made up of highly trained volunteers available, 24/7 in any weather, any time of the day or night, providing Mountain and Cave Rescue in the Northern Yorkshire Dales.

This season's fundraising neck tubes are now available from the link on our Facebook page or from the Tan Hill Inn, Kings Head, Gunnerside & The Black Bull, Reeth.



MULTIWRAP MULTIFUNCTIONAL HEADWEAR

## Coffee and Cake Mornings

at West Burton Chapel

Every 1st Tuesday of the month

from May 7th

10.00am - Noon

Do come and join us



## Wensleydale Craft Fairs

Quality crafts by local and regional makers

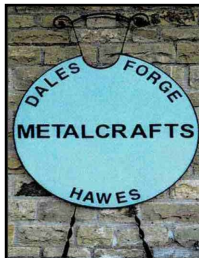
at the Market House, Hawes

8 - 9 June

29 - 30 June

[www.wensleyfairs.co.uk](http://www.wensleyfairs.co.uk)

Tel: 07857 439450



## Dales Forge

Metalcrafts

Tel: 07729 105466

Unit 5, Raynes Court  
Hawes, North Yorks.

[dalesforge@btinternet.com](mailto:dalesforge@btinternet.com)



Robin Jessop

## Free Market Appraisals

For Selling & Letting Rural Property.

Specialists in Selling by Auction.

Market Valuations for Tax Planning,  
Lending, Compensation and Council Tax  
purposes

Marwood House, Railway Street, Leyburn

Tel: 622800

## Events at Hawes Junction Chapel

**Sunday, June 2nd** - Guided walk in Swaledale.  
Meet at Gunnerside Chapel at **1.30pm**.

**Sunday, June 16th** - Songs of Praise with  
Rev. Dave and Sarah Clarke of Hawes at  
**2.30pm**.

Light refreshment will be served at the close  
of the meetings. All welcome.

## CHAPEL GALLERY

Work on display from local artists  
and crafters

Coffee and cakes

Dogs and children welcome

Open daily (except Sundays)

**11am to 4pm**

Burtersett Road, Hawes, DL8 3NP

**Tel: 07474 138536**

[info@chapelgalleryhawes.com](mailto:info@chapelgalleryhawes.com)

[www.chapelgalleryhawes.com](http://www.chapelgalleryhawes.com)



Swan Farm, Redmire,  
Leyburn DL8 4HA

**01969 625647**

[castletimberbuildings@mail.com](mailto:castletimberbuildings@mail.com)  
[castletimberbuildings.com](http://castletimberbuildings.com)

All of our products are hand made to order,  
from the smallest of sheds to the more  
elaborate designed summer houses. Our  
team of experienced joiners and specialists  
are on hand to advise and guide you, to  
help get the most of your product.

We aim to deliver the highest quality  
buildings, tailor-made to your requirements  
using only the finest quality timber and  
ethically sourced. You can be reassured  
that we also care for the environment.

## Aysgarth Garage Shop and Post Office. Tel 663900.

Our store offers a wide range of goods fresh,  
frozen, household, auto accessories, tools, pet  
food, stationery and newspapers.

We have fresh bread, sandwiches, pasties, fruit  
and vegetables, milk and dairy including some  
specialist cheeses and an excellent selection of  
beer, wine and soft drinks, snacks and  
confectionery.

**Shop hours are 07.30-18.00 Mon-Sunday**

In September 2022, we opened a Post Office at  
Aysgarth Garage which is integrated into the  
retail area and offers customers a wide range  
of Post Office services from posting letters and  
parcels to collecting and returning online  
items. It also offers banking services including  
cash withdrawal, deposits and bill payments.  
**rs are 09.00-Noon Monday, Wednesday  
and Friday. Tel 663900**

## THE HEALING COLLECTIVE

Encouraging health and well being  
with a range of therapies.

*Therapies for animals also available.*

Coach House, Berry's Farm Shop & Café,  
Swinithwaite, DL8 4UH. t.0845 474 2383

[info@healingcollective.co.uk](mailto:info@healingcollective.co.uk)  
[www.healingcollective.co.uk](http://www.healingcollective.co.uk)



Visit the ewe-commerce store  
for ewe-nique merchandise.

Postcards, mugs, magnets,  
t-shirts and more.

Eunice as ewe've never seen  
her!

[webpr.co.uk](http://webpr.co.uk)

## DENTURE PROBLEMS?



Denture Studio

### Are you unhappy with the look or fit of your existing dentures?

**WE CAN HELP**

Our in-house Clinical Dental Technician Mark can provide quality bespoke dentures designed to your individual needs



To Book  
**FREE**  
Consultation **CALL**  
**01677 422968**

**Website: [www.orcharddentallab.co.uk](http://www.orcharddentallab.co.uk)**  
**Email: [info@orcharddentallab.co.uk](mailto:info@orcharddentallab.co.uk)**  
**1 The Villas, Bridge Street, Bedale, DL8 2AB**



# Home Run

*Pet sitting, House sitting, Dog walking*

I offer a friendly, personalised pet and house sitting service in Wensleydale and further afield.

Nicola – 07866 336924  
[nicola@homerundogsitting.co.uk](mailto:nicola@homerundogsitting.co.uk)  
[www.homerundogsitting.co.uk](http://www.homerundogsitting.co.uk)



- City & Guilds qualified
- Fully insured ● Certificates issued
- Prompt professional service
- Bird guards and cowl fitted
- NO MESS - NO FUSS!

**Martin Tradewell**  
**QUALIFIED CHIMNEY SWEEP**

**01969 640099**

Glenside, Horsehouse, Leyburn. DL8 4TS  
Email: [martin@daleschimneysweep.co.uk](mailto:martin@daleschimneysweep.co.uk)



**THE WENSLEYDALE SCHOOL  
& SIXTH FORM**  
**LEYBURN**

### Reflections from the Headteacher

When I took Office in January 2016, I knew that there was a massive job ahead of me. I remember having many initial discussions with community leaders, councillors and parents about their concerns and in one meeting, I distinctly remember several people sitting in my office and saying 'we will judge you by what you do ..' the gauntlet had been laid down.

Managing change is always a task that requires patience and perseverance, add to the mix the disruption caused by covid-19, looking back it seemed a daunting prospect.

This term I can honestly say that we have come a long way.

One of my aims has always be to reinstate this school as a centre for the community, breaking down barriers and perceptions that had been erected over time.

Perception is a difficult nut to crack and those of you who know me well, know that I have been blunt and at times, outspoken about my frustration with perceptions about our school in the community. However, last night as I headed for home, I had to do a double take. Our school was full of community activities. Tennis coaching was running, footballers were arriving for their practice session and badminton was in full swing. Teachers had gone home and our school was full.

On top of this our Parent Teacher association is now up and running with plans to raise funds for outdoor furniture and equipment. The Student Council has also suggested that in our last week in July, rather than plan out of school activities, everybody does some sort of community work to help tidy the grounds and classrooms. This collaborative team effort is being fostered and driven by the students.

I am not complacent and realise that there is still much to do. However, I am rightly proud of what our school has achieved. As our Year 11s begin their GCSE exams, I would like to take this opportunity to thank the community for all your support and on-going goodwill.

**Julia Polley**





The Sedbergh Music Festival has enjoyed record advance ticket sales ahead of its 2024 festival which runs from **June 16th to 27th** in the picturesque market town.

The festival, which has taken place every two years since the turn of the millennium, announced its ambitious schedule in January. As well as a host of local talent, its schedule includes the likes of BBC Singers, one of the world's finest chamber choirs, and Ulverston-born Jess Gillam.

Gillam won fame firstly as she won the BBC Young Musician of the Year before embarking on a highly successful performing and presenting career which this summer sees her travel to the likes of Sydney Opera House as well as Sedbergh.

This year's festival starts with a free 'Come & Sing' event on **Sunday, June 16th at 2.00pm** in St Andrew's Parish Church, Sedbergh, when the festival's director - John Seymour - will conduct 'The Armed Man' by Karl Jenkins.

Tickets for all events are available for purchase from the festival's website - [www.sedberghmusicfestival.com](http://www.sedberghmusicfestival.com).

**W.S.HARTLE**  
**FAMILY BUTCHER, WEST BURTON**  
Best Quality Meat, West Burton Lamb,  
Homemade Sausages and Burgers,  
Free Local Delivery and Freezer Orders  
Tel: David on **01969 663302** or visit  
[www.hartlebutchers.co.uk](http://www.hartlebutchers.co.uk)

**EFFICIENT HEAT**

**OIL BOILERS SERVICED  
AND REPAIRED**

**Contact Nick**  
**07729 105466 / 01969 667847**

## Middle House Hotel, Askrigg

On February 1st this year John Teasdale became the owner of the Middle House Hotel (formerly the White Rose), pub and restaurant in Askrigg.

John is the eldest four brothers from the village. Their father, Trevor, is a well known local builder. John went to university, unlike his brothers who joined dad in the building trade. From university he joined the hospitality sector managing a hotel in Northallerton for 12 years, latterly as an area manager for that hotel group. This was followed by setting up a hospitality consultancy with a business partner which he still runs alongside the Middle House.

When the Middle House came on the market it was an opportunity for John and his partner Craig to return to the area. With a lot of encouragement and help from the family in renovating and upgrading the hotel, it reopened on February 5th this year.

The business is going well and plenty of bookings for the coming summer are looking healthy. We wish him well in this new venture.

 **M Fothergill**  
**Building Services**  
*All aspects of building work undertaken* **667936 / 07966 624649**  
Hawes DL8 3RP

Plastering Alterations Extensions  
Roof work General Maintenance

 **Yorkshire Dales Accountancy**  
Chartered Accountants

**taxation & business advisors**

We provide a broad range of accountancy and taxation services to our clients. Please feel free to contact Martin or Hazel.

E-mail:  
[info@yorkshiredalesaccountancy.co.uk](mailto:info@yorkshiredalesaccountancy.co.uk)

**Telephone: 01969 678128**

Website:  
[www.yorkshiredalesaccountancy.co.uk](http://www.yorkshiredalesaccountancy.co.uk)



## Bluebox - June Update

### Wensleydale Community Arts Festival

It's June already, and a month of celebrating all things community arts awaits as the Wensleydale Community Arts Festival gets into full swing. From talks, demonstrations and workshops to theatre, dance and concerts by community groups, established and emerging artists and performers. Our 'Let's Get Creative' competition is open to all abilities and ages to enter. There's even a family fun day on **Sunday, June 23rd** in the grounds of Thornborough Hall with Maypole dancers, Leyburn Band and a chance to enter our Grand Prize Draw.

Some events will be held around the Dales with the majority taking place at St. Matthew's Church, Leyburn Methodist Church Hall, Leyburn Arts and Community Centre, Leyburn Library and Thornborough Hall. Events will again be 'pay what you can afford' with suggested donations and some fixed fee events to ensure we are able to meet costs. Booking is recommended to avoid disappointment. Full details are available at [www.wensleydale.org](http://www.wensleydale.org) or pick up a copy the Festival programme at community information points. Our box office and enquiry line is **01969 745810** | [info@wensleydale.org](mailto:info@wensleydale.org).

Workshops - Local Artists will be delivering workshops at Leyburn Methodist Church Hall where participants can work on their own material and artforms while gaining advice and tips on drawing and painting, sewing and traditional crafts, photography and editing techniques. All levels and abilities welcome from complete beginner to advanced. Places are £20 including materials and refreshments. Booking is essential to avoid disappointment.

**Thursday, June 13th, 10.00am to 12.30pm** – 'Painting in Watercolour' with Nora Yates.  
**Saturday, June 22nd, 11.00am to 2.00pm** – 'Inspired by the Dales' with Lynn Ward.  
**Thursday, June 27th, 10.00am to 12.30pm** – 'Photo editing skills' with Wensleydale Camera Club (£10).  
**Saturday, June 29th, 11.00am to 2.00pm** – 'Exploring Watercolours' with Maxine Ahmed.  
**Saturday, June 29th, 2.00pm to 4.00pm** – 'Creating Yorkshire Buttons' with

Jan Bell at her Garden Studio. (£5 inc. materials).

Here is a flavour of what's in store.

**Sunday, June 9th:** Remembering D Day 80 years on. [Music and spoken word] - Join us for afternoon tea, a nostalgic mix of war time and sing along favourites with guest vocalist Rebekah Austin, and words of remembrance from Donovan Leeman at Leyburn Methodist Church Hall, **2.30pm**. Tickets £15 per person.

**Tuesday, June 11th:** Holmes and Watson: The Farwell Tour. [Theatre] - We are thrilled to be bringing live theatre back to the Dales. By popular request we announce a welcome return to Pyramus and Thisbe Productions. Dominic Goodwin and Julian Finnigan perform their hilarious 'Holmes and Watson - The Farewell Tour'. This comedic tale written by Stuart Forrey recalls one of the detective duos most baffling cases – The case of the Prime Minister, the Floozie and the Lummock Rock Lighthouse! The Performance takes place at Leyburn Methodist Church Hall, **7.30pm**. Tickets £15 per person.

**Wednesday, June 12th:** Fun Dance Evening with Joan and Carl Danvers. [Dance] - Take part in a range of participatory dances such as line dancing, country dancing or just relax and enjoy a sequence dance demonstration. Dance Studio, Leyburn Arts and Community Centre, **6.30pm**.

**Friday, June 21st:** Leyburn Recorder Consort. [Music] - Leyburn Recorder Consort present an afternoon concert of popular pieces at St. Matthew's Church, **2.00pm**.

**Friday, June 21st:** Richmond School Music Department. [Music] - Ahead of their forthcoming tour to Germany, Richmond School's Choirs, Concert and Jazz bands and ensembles present an evening of music from their summer programmes. St. Matthew's Church, **7.00pm**.

**Saturday, June 22nd:** Puppet workshop [Storytelling] - Fun for all the family with David Watterson's interactive puppet workshop and performance. Ideal for younger children to explore and discover storytelling through creative play with puppets. St. Matthew's Church, **2.00pm**.

**Saturday, June 22nd:** Dales Variety Show [Dance, music and more] - Dales Dance, Wensleydale School Music Department and



BlueBoxt's performers come together to present an evening of entertainment which showcases the variety of performance arts taking place across Wensleydale and Swaledale. St. Matthew's Church, **7.00pm**.

**Sunday, June 23rd:** Family Fun Day with Leyburn Band [Crafts, stalls, music] - Fingers crossed for good weather as we transform the grounds of Thornborough Hall into a hub of activity for all ages. From Giant Garden Games and Circus Skills with Edwina and the team from North Yorkshire Youth to 'Printing with Nature' with Matt Magnus. There'll be fundraising stalls and activities including a book exchange, tombola, guess the name and refreshments. There will be performances throughout the day including Maypole dancing with Dales Dance, Storytelling with Rhoda Fraser, BlueBoxt performers and Leyburn Band. From **11.00am to 4.30pm**.

**Tuesday, June 25th:** Words and Music for a Summer's Evening [Music, spoken word] - Tony Scully presents a selection of creative writing and prose. The Yoredale Strummers Ukulele group perform a selection of sing-a-long favourites. The evening concludes with a welcome return by vocalist Liffy who will sing selection of popular songs from artists such as Marti Webb, Dolly Parton and Elton John. St. Matthew's Church, **7.00pm**.



**Wednesday, June 26th:** Musicality Concert [Music] - Enjoy a lively evening filled with fabulous songs with community choir Musicality, directed Andrea Rhodes and accompanied by Gillian Ash. From Broadway hits and pop standards (including Paul Simon, Leonard Cohen, Coldplay, Nina Simone) to folk and gospel and so much more! St. Matthew's Church, **7.00pm**.

**Sykes House in Askrigg**  
**Grocery Shop and B&B**  
Shop Open 7 days a week

Enquire for  
B&B bookings at  
[www.sykeshouse.co.uk](http://www.sykeshouse.co.uk)  
**01969 650535**

**Friday, June 28th:** From Wensleydale to the West End [Talk, drama and spoken word] - Enjoy an evening with Nobby Dimon as he recalls anecdotes and insights as a writer, director and actor touring the country from Richmond, North Yorkshire. Donovan Leeman and Ian Caldwell present a selection of their favourite poetry and prose. Jennifer Saggars shares news of our writers project. Tickets £15 per person including buffet supper. St. Matthew's Church, **7.00pm**.

**Saturday, June 29th:** Afternoon Concert with Colin Bailey and Fred Norman [Music] - An afternoon concert with Colin Bailey and Fred Norman. Enjoy a selection of popular favourites from the hit parade, stage and screen. Artists such as Lionel Richie, Adele, Ed Sheeran, Elton John and many more. St. Matthew's Church, **3.00pm**.

**Saturday, June 29th:** Friends of Dave and Leyburn Jazz Collective [Music] - Acoustic duo Elizabeth Carter and Mick Yare present an eclectic mix of classic songs which have stood the test of time. From Dusty Springfield, Nick Drake to the Police and Bombay Bicycle Club. Leyburn's very own Jazz Collective complete the evening with a selection of Jazz favourites. St. Matthew's Church, **7.00pm**.

**Sunday, June 30th:** Light My Choir and the Dales Community Pop Choir [Music] - The festival ends with two of Wensleydale's community choirs directed by Debbie Allenby. Light My Choir – Wensleydale Community Gospel Choir and The Dales Community Pop Choir present an afternoon of uplifting and popular music. St. Matthew's Church, **2.00pm**.

**Wonky Tree Book Hunt – Tuesday, June 18th to Saturday, June 22nd:** - Collect an entry form from the Wonky Tree Book Shop and set off on an adventure around the town to see what hidden gems you can discover.

Let's Get Creative Competition - open to all ages. Closing date: **July 31st 2024**. Open to all creative art forms with a choice of two themes. 1) A view from a window or 2) Rural Life - Wensleydale and Swaledale. See [www.wensleydale.org](http://www.wensleydale.org) for full details.

Coffee Mornings - Our next coffee morning will be **Friday 28th June** at Leyburn Methodist Church Hall.

## How Many Buses?

I have just counted up how many buses are scheduled to go through Hawes Market Place each Sunday this summer. You might find it interesting to pause here and guess the number.....

It totals an amazing 37 buses! That is 37 opportunities every Sunday this summer either to alight from a bus arriving in Hawes Market Place (or to meet someone who does not drive coming to visit you!), or to board a bus to a different destination. (Note that a 38th Sunday bus - the **4.40pm** via the spectacular Buttertubs Pass to Swaledale and Richmond - departs only from the DCM and does not go through the Market Place).

The popular Summer Sunday DalesBus services in Upper Wensleydale has been improved for summer 2024, with a longer season and the addition of a new journey from Richmond and Catterick Camp via Redmire, Carperby, Askrigg, Bainbridge and Hawes to Ribbleshead, providing access to the Three Peaks area.

The buses will run **every Sunday from May 5th until October 20th**, providing lots of opportunities to visit different parts of the beautiful Yorkshire Dales National Park.

Following many requests Northern DalesBus 830 returns this year, providing access from Ribbleshead, Hawes and Upper Swaledale to Richmond on Summer Sundays. It runs from Ribbleshead Station at **10.45am** (connecting with the train from Leeds), Hawes Market Place at **11.05am**, Muker at **11.32am** and Reeth at **noon**, returning from Richmond at **4.45pm**.

New for 2024, Northern DalesBus 858 will provide access from Wensleydale to the Three Peaks area every Sunday, leaving Redmire at 9.33am and travelling via Carperby, Askrigg, Bainbridge, Hawes (**10.05am**) to Ribbleshead Station, connecting with the train to Carlisle. There's plenty of time for a full day's walking and refreshment afterwards, with the return bus leaving Ribbleshead at **6.55pm** and Hawes at **7.15pm**.

Northern DalesBus 832 is also running again on Sundays and Bank Holidays from Hawes (departing **12.40pm**) to Ribbleshead, Ingleton and Kirkby Lonsdale. The return bus departs Kirkby Lonsdale at **3.30pm** arriving back in Hawes at **4.25pm**. The bus continues

from Hawes at **4.40pm** for the return journey on Northern DalesBus 831 via Swaledale arriving in Richmond around **6.00pm**.

The current national fare cap on bus fares applies to all these services, so each single journey costs just £2 (£1 for under 19s).

And what about trains?

Note that a revised national rail timetable starts on **June 2nd**, with minor changes on the S&C so you are advised to check carefully for any train journeys from that date onwards. For students and week-enders there is the very useful Sunday afternoon through train (no changes) from Garsdale via Leeds and on to Nottingham.

A long-awaited rail development for summer Saturdays - from **June 8th** - is the new train service between Rochdale and Ribbleshead, with two return services from Lancashire (marketed as The Wensleydale Explorer) making a day out in Clitheroe etc possible from Ribbleshead on forthcoming Saturdays. (There are limited connections with this service from Garsdale - check with care).

As always, check with the operator before travelling for outward and return journey times (3rd party websites may not have been updated) before setting out and also check any codes at the top or bottom of timetable columns. Arrangements for accepting ENCTS bus passes, maximum £2 adult single fare etc vary - local authorities have different funding arrangements with their operators.

## SANDERSON & CO.

**"Decorating Supplies"**

**DULUX COLOUR  
ADVICE CENTRE**

Scanner Colour  
Matching & Paint Mixing



Stockist of Leading Brands including,  
**Dulux, Crown, Leyland,  
Ronseal, Cuprinol**

Extensive Wallpaper Pattern Library  
Trade & Quantity Discounts Available

**High Street, Leyburn DL8 5AQ  
01969 623143**

Email: [sandersonandcoleyburn@gmail.com](mailto:sandersonandcoleyburn@gmail.com)

**Also CALOR & Camping Gaz stockist**

Mobile heaters and accessories

Free local delivery



## Barden Charity Clay Shoot

Barden Charity Clay Shoot is back raising money once again for Support Dogs UK.

Teenager Molly, who has cerebral palsy, is now an official committee member of the shoot which is run by her parents Kevin and Emma, with Kevin chairing a volunteer committee of family friends.

When Molly got her wonderful support dog Chess, it was an instant connection with Chess immediately helping Molly, making difficult day to day life much easier and enabling Molly to have a lot more independence, which as a teenager is hugely important, both physically and emotionally. Anyone who knows Molly and the family knows just how much she loves Chess and how much he helps her and that is why the committee of the shoot choose to fundraise for Support Dogs UK again and again.

The shoot takes place on **July 7th** in Barden, near Leyburn. It is based on a team of 4 and covers simulated game flushes totalling 500 targets over six stands. To enter is £500 per team of 4. Cash prizes of £600, £400 and £200 are given to the top 3 teams and there is a prize for the highest placed ladies team.

The day is limited to a maximum of 75 teams so pre-registration is required. All participants must be shotgun certificate holders and over 16 years old. To enter please visit [www.bardenclayshoot.co.uk/Entries](http://www.bardenclayshoot.co.uk/Entries).

For more information please visit [www.bardenclayshoot.co.uk/](http://www.bardenclayshoot.co.uk/) or email [bardencharityclayshoot@gmail.com](mailto:bardencharityclayshoot@gmail.com).

## Arena Physio and sports rehab.

physiotherapy & sports rehabilitation clinic

Assessment, treatment and rehabilitation of musculoskeletal pain, injury and dysfunction.

### Appointments available at:

Carperby Football Club, Carperby,  
Leyburn, North Yorkshire. DL8 4DJ.

or

Darlington Mowden Park RFC  
Darlington Arena, Neasham Road,  
Darlington. DL2 1DL

**Tel: 01325 728092 Mob: 07799767075**

**[www.arenaphysio.co.uk](http://www.arenaphysio.co.uk)**

Come and see

## An Exhibition of the Talents Quaker Meeting House in Bainbridge June 15 & 16 11.30am - 4.00pm

that's the weekend of Father's day and The Beamish Car Rally

You can get there on Little White bus 156 bus on Saturday  
for Sunday look at DalesBus routes [www.dalesbus.org](http://www.dalesbus.org)



Do you sculpt, whittle, draw, sew, knit, pot, write, paint,  
take photos, colour in, upcycle, quilt, tat,  
make lace, weld or create in any other medium?

## YOU

are invited to exhibit anything that you have made



Please bring your exhibits to the Meeting House  
Thursday or Friday June 13 or 14 11am- 4 pm

We are really excited to see what you all can make!

For further details please contact: Gwen Clark 01969 667411

## Mystery Picture

Last month's Mystery Picture was of the disused railway bridge just south of Askrigg.

Where would you find this narrow opening?



# Index to Advertisers

	Page		Page
Accountants, O'Reilly, Hawes	14	Joiner and Cabinet Maker, Bushby	13
Accountancy, Yorkshire Dales	33	Joiner, Solid Joinery Solutions	9
Advertising Rates and Contacts	40	Logs, Springbank Logs, Hawes	17
Agricultural Contracting	27	Logs, Seasoned Hardwood	15
Appliance Repairs, Bartlett	17	Massage, Mobile Therapist	15
Aysgarth Falls Hotel	12	Middle House, Askrigg	18
Aysgarth Garage	31	Music Tuition, Colin Bailey	9
Bear Cottage Interiors	29	Nails, Lashes etc, The Parlour, Hawes	29
Boiler Service – Efficient Heat	33	Optician - Mike Addison	22
Boiler and Aga Service, M.F.W.	17	Orthopaedic Massage, Reflex	23
Bookkeeping, Barn Studio	25	Pet and House Sitting, Home Run	32
Builder and Plasterer, M. Moore and Son	22	Physio, Arena	37
Builder, Dinsdale John and Ted	17	Plumbing and Bathrooms, Greiff	15
Builders, Moore and Blackhurst	28	Plumbing and Heating, Parfitt J	17
Building Contractor, Andrew Hawkins	20	Plumbing & Heating, Upp. Wensleydale	11
Building Services, Fothergill M	33	Portable Appliance Testing	39
Butchers, Cockett, Hawes	26	Post Office,	
Butchers, Hartle, West Burton	33	Hawes, Bainbridge and Askrigg	39
Chapel Gallery	31	Print Services, Pennine Print	29
Chimney Sweep, Dales Sweep	32	Print Services, Wensleydale Press	19
Coach Travel and Holidays – Bibby's	13	Property Clearance Solutions	27
Coal Merchant, Peacock	19	Scrap Car and Commercials Collection	13
Cumbria Stove Centre	19	Sewing Needs; Kearton	14
Dales Forge, Metalwork	30	Solicitor, Hall and Birtles	39
Dales Garage	12	Solicitors, McGarry	11
Dales Web Solutions	7	Slimming World	9
Decorating Supplies. Sanderson & Co	36	Stone House Hotel	26
Dental Lab, Orchard	32	Sycamore Country Store	29
Edgley Garage, Aysgarth	25	Sykes House, Askrigg	35
Electricians - Teasdale	39	Tailoring - Applegarth Couture	13
Estate Agent, Jessop Robin	30	Taxi, Peacock, Bainbridge	19
Fabrics for sale	12	Tea Room, Hamilton's, Aysgarth	6
Fabrics and Haberdashery–Temptations	14	Tea Room, Mill Race, Aysgarth	4
Fish Market, Hawes	14	Timber Buildings, Castle	31
Flooring - NH	15	Travel Specialists – Sturdy Travel	11
Fuel Available, Dale Head Garage	13	TV Aerial & Satellite Services. J.Banks	27
Funeral Directors, Sanderson and Co.	4	Vets Bainbridge	25
Furniture, Handcrafted, Tom Addison	25	Vets, Wensleydale	23
Hawes Country Store	25	Wensleydale Craft Fairs	30
H&M Craftsmen, Ingleton	22	Wensleydale Creamery, Hawes	18
Hairdressing, Edie Peacock	40	Wensleydale Tree Services, D. Allen	29
Hairdressing, Twisted	13	Woodcraft Studio & Timber Services	7
Healing Collective, Swinithwaite	31	Yorebridge House Hotel	28
Hearing Tests and Aids	22	Yore Mill Craft Shop and Gallery	19
Ironing Service–Tracy Hume	8	Yorkshire Foot Clinic	11



The children in Dalesplay have been enjoying the better weather with lots of outdoor play. We have rehung some nice colourful flags and wind tunnels to brighten up our outdoor area. The children have been exploring bugs and how they live. We have been taking great care of them by putting them in the bug hotel to protect them from growing feet playing outside.

The children in Sunshine's have based their learning around some of our favourite stories, including 'Going on a Bear Hunt', Billy Goats Gruff and 'The Three Little Pigs'.

Our Ducklings have been practising action rhymes and helping to develop their speech through songs. They have been exploring what the different emotions feels like and enjoyed lots of sensory play to develop their senses.

We are now taking bookings for September;

these are for government funded places 9 months upwards for working families, 2-year-old deprivation funded places and for paid sessions. We do advise that you apply for your funding code now by visiting [www.childcarechoices.gov.uk](http://www.childcarechoices.gov.uk) and book a place now with Dalesplay by emailing [dalesplay1@btconnect.com](mailto:dalesplay1@btconnect.com). We are unable to take last minute bookings, as we need to plan ahead to ensure we are meeting all Ofsted requirements and remain in adult:child ratios at all times. This helps safeguard children and provide them with the best learning and caring environment possible.

Dalesplay has a table top sale on **July 6th** in Hawes Market Hall from **10.00am to 4.00pm**. Homemade refreshments will be on sale and there will be a range of stalls to meet everyone's taste. We welcome any donations of tombola prizes which can be dropped off with the staff at Dalesplay.

## Portable Appliance Testing (PAT)

Hawes DL8 3NT

Certificates & Reports supplied on each appliance tested.  
Please call for free quote and advice

Wayne Webster 01969 666020  
or 07766 640905

## TEASDALE ELECTRICAL

Your local electrician serving the dales and the surrounding areas

Askrigg  
North Yorkshire

Tel - 07814 184974 (Steve)

Email - [teasdaleelectrical@icloud.com](mailto:teasdaleelectrical@icloud.com)



Hall & Birtles  
-SOLICITORS-



For all your legal requirements offering a full range of services.

Hawes DL8 3QL, Tel 667171

email: [hawes@hallandbirtles.co.uk](mailto:hawes@hallandbirtles.co.uk)

and at Leyburn, Golden Lion Yard,  
DL8 5AS, Tel 01969 625526.

email: [Stuart@hallandbirtles.co.uk](mailto:Stuart@hallandbirtles.co.uk)

Regulated and authorised by the  
Solicitors Regulation Authority

## HAWES POST OFFICE in the Community Office

OPENING TIMES:

9.00am to 5.00pm Monday to Friday

9.00am to noon on Saturday

Phone number: 01969 667201

## BAINBRIDGE POST OFFICE

Post Office open at Bainbridge  
in Sycamore Hall 9.00am to 11.00am  
Mondays and Wednesdays

## ASKRIGG POST OFFICE

In Sykes House, Noon to 2.00pm  
Mondays and Wednesdays





## LEYBURN ARTS & COMMUNITY CENTRE

Richmond Road, LEYBURN, DL8 5DL

Bookings & Info: **01969 624510** [leyburnartscentre.com](http://leyburnartscentre.com)

### C I N E M A

(£6, or £5 for 60+ / U14. Unless otherwise stated)

<b>TUE 4 JUNE</b>	7pm	<b>Four Daughters</b> (15) 1h 47 (Exploring Film)
<b>FRI 7 JUNE</b>	6pm	<b>Wicked Little Letters</b> (15) 1h 40
<b>FRI 14 JUNE</b>	6pm	<b>The Iron Claw</b> (15) 2h 12
<b>FRI 21 JUNE</b>	6pm	<b>Swede Caroline</b> (15) 1h 38
<b>THU 27 JUNE</b>	7pm	<b>My National Gallery, London</b> (Exhibition) *£12
<b>FRI 28 JUNE</b>	6pm	<b>That They May Face the Rising Sun</b> (15) 1h 51
<b>SUN 30 JUNE</b>	2pm	<b>Riverdance 25<sup>th</sup> Anniversary Show</b> (Live Event) *£12

### OTHER EVENTS & NEWS (\*Half price entry for our volunteers)

<b>SAT 1 JUNE</b>	10 - 4pm	<b>Table Top Sale</b> Free Entry
<b>SAT 15 JUNE</b>	7:30pm	<b>The Solid Gold 60's Show</b> (Live Music) *£12
<b>SAT 6 JULY</b>	7:30pm	<b>Jayne Darling</b> (Live Music) *£12
<b>SAT 13 JULY</b>	7:30pm	<b>Dixon County Band</b> (Live Country Music) *£12

*Please book events in advance if possible. Call us Mon-Fri 1-4pm*



## Edie Peacock Hairdressing At the Parlour

**Call: 07817 312906**

## Postal Subscriptions

If you would like to receive the Newsletter by post every month the cost is £14 per annum. Please pay by BACS (**Account 74237721, sort code 51-61-33**) and send your full address details to [uwnlinput@gmail.com](mailto:uwnlinput@gmail.com). Or send a cheque for this amount (made out to the Upper Wensleydale Newsletter) plus your details to Karen Jones, Skellgill Cottage, Skellgill Lane, Askrigg, DL8 3JG.

## Advertising

**Boxed adverts: £6, £12, £18  
(dependent on size)**

There is a big reduction for six issues or more, so for six issues the totals are:

**£25, £50 or £75**

**Greetings etc. £2**

**What's ons (non-commercial) are free**

**Contact for adverts:**

**Barry Cruickshanks**

**01969 667458**

**[uwnlinput@gmail.com](mailto:uwnlinput@gmail.com)**

*Whilst we try to ensure that all information is correct we cannot be held legally responsible for omissions or inaccuracies in articles, adverts or listings, or for any inconvenience caused. Views expressed in articles are the sole responsibility of the person by-lined. Articles by committee members carry just their initials.*

*We appreciate being asked before any part of the Newsletter is reproduced.*

## Published by

The Upper Wensleydale Newsletter  
Lilac House, The Holme, Hawes, DL8 3QR  
**01969 667458**

Email for submission of articles, what's ons, letters etc.: **[uwnlinput@gmail.com](mailto:uwnlinput@gmail.com)**

Newsletters on line, simply search on "Upper Wensleydale Newsletter"  
Archive hard copies back to 1995 are in the Dales Countryside Museum resources room.

**Editors:** Barry Cruickshanks,  
Kevin Davis,

**Committee:** Malcolm Carruthers,  
Tony Hutchinson, Karen Jones (Treasurer),  
Neil Piper, Karen Prudden,

**Founded in 1995  
by the late Alan S. Watkinson**