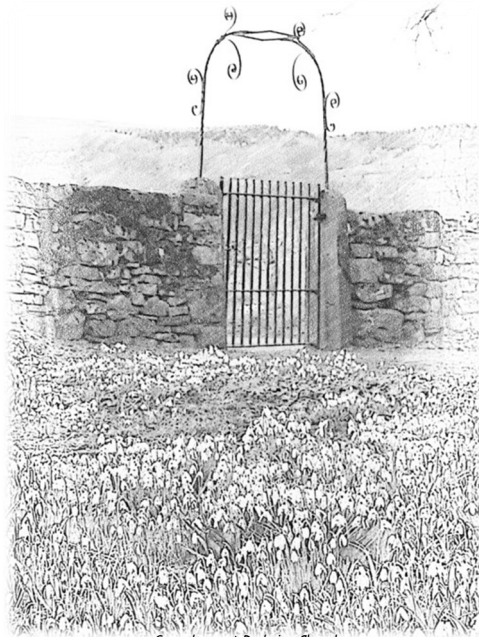


# THE UPPER WENSLEYDALE NEWSLETTER

Issue 294

February 2023

Donation please:  
50p suggested



*Snowdrops at Redmire Church*

Covering Upper Wensleydale from Wensley to Garsdale Head plus Walden  
and Bishopdale,  
Swaledale from Keld to Gunnerside plus Cowgill in Upper Dentdale.

## Guest Editorial

*'This is the weather the shepherd shuns  
And so do I'*

So wrote Thomas Hardy in his poem 'Weathers'. It came to mind when I was driving home along the Dale yesterday, swerving to avoid massive puddles, slowing down at the 'flood' signs, with wind and twigs battering my windscreen. A city dweller for 30 years, I was more or less immune to 'weathers' and I knew little about the work of a shepherd. Now I look out of my window at a lot of very bedraggled sheep. Whenever I bring my car through the gate they perk up and run up to the garden wall, bleating piteously. It is not me they want, it's my neighbour John, to come along with some supplementary feed.

There is always talk about shepherds at Christmas. 'While Shepherds Watched' is a favourite carol. Another, less well known, goes 'Shepherds shake off your drowsy sleep / Rise and leave your silly sheep'. The word 'silly' originally meant 'innocent' or 'blessed' (the original word, 'saelig', is Anglo Saxon). As a child, and an animal lover (my earliest ambition was to be a vet) I hated singing about 'silly' sheep. So I was glad, years later, to learn that they were not silly at all, that on the contrary, sheep are intelligent. Shepherds too have had a varying reputation. Once looked up to as pillars of agrarian society, they had sunk socially by the time of Christ's birth. The shepherds at the manger were very likely to have been dirty, ragged, smelly and poor. And as they had come to see a baby who was equally poor, lying on a bed of straw instead of in a cot, this would seem fitting.

There are those who believe that Christ was God come to earth, others who think it is all a myth. Whatever we think, we all need some kind of festival or feast, some 'high point' to help us through the worst time of the year. In relentless, awful weather, most of us prefer to hunker down and close our curtain against the blast. We may need to close our minds too, against the desperate world realities of war, hunger and climate change. All this makes me ask 'What now is good?' a question I asked in the poem I wrote this year, for our Christmas card.

One answer to 'What now is good?' was 'The daily miracle of clouds / The homeward rooks', and what a joy it is, on a clear day, to drive

home along the Upper Dale towards Hawes, the river winding below, the reassuring shoulder of Staggs Fell, the ever-changing sky and the birds up to their various ploys, in fields and trees. Trees are particularly beautiful in their bareness, one reason many of us love winter, in spite of the cold.

This Christmas, in addition to some spending money, I gave each of my grandchildren a good quality torch. An odd choice perhaps but they all seemed delighted. I bought myself one too, having heard there were likely to be power cuts this winter. These torches throw a wide beam but you can adjust them to produce a smaller more highly-focussed one instead. Both have their uses.

At this time of year everyone talks about New Year resolutions and how soon we break them. After a while it gets very boring, the diets, the regular daily walks, the giving up of chocolate or alcohol. Dr Samuel Johnson was a great maker and breaker of New Year resolutions. 'Rise early, Give up Sloth, Give up Gluttony'. Weight Watchers would have made a lot of money out of his annual subscription.

The novelist and philosopher Iris Murdoch was once asked 'What is the purpose of life?' She gave much thought to this big question before saying slowly 'To do some work, to have some fun, to love some people and to try to be good.' I wrote this down many years ago and I still think of it often, as now, when I look into the year ahead (by the way, I particularly like 'some people'. You can't love everybody).

So I'm shining my fancy new torch into the unknown year that lies before us. With its two-way beam I can focus on 'some' people, and also look more closely at the small and lovely things around us, which I often pass by in too much of a hurry. But I want to focus on the bigger picture too, not just the world and its miseries, which are with us every day, but on the hills and the sky and the birds and the weathers, on all the good gifts around us. You too, I hope.

**Ann Pilling**

### Submission of articles

Please note that all submissions should comply with current copyright legislation. If submitted articles are not the original work of the person submitting them, then all relevant permission should be sought and granted for reproduction.



## News From Hawes Primary School

EYFS/KS1 Christmas Cycling Day - The children in class one spent a super Christmas themed day with 'Pro-Ride'. This was a special treat with tinsel, music and reindeer cycling helmets and cycles!

KS1 Nativity - Our Nativity this year was 'Baaa Baaa Bethlehem'. All the children from Reception to Year 2 took part. It was amazing to have all the parents back in school to watch our performance. We also had our Nursery children performing some songs in the afternoon.

Library Development - We are currently developing our Library area. Mrs Brown is working with a group of Year 6 reading ambassadors. They are busy collecting our books into one place, where all the children will be able to access them in a calm environment.

Visit to Kirkby Stephen Grammar School - The Year 6 children had a special trip to see a performance of Matilda at KSGS. They enjoyed the experience and were full of conversations about past pupils they had seen taking part. It's always special to see a live performance.

Upper Wensleydale Writing Competition - We were really proud of two of our Year 6 girls who came first and second in the Upper Wensleydale Newsletter competition in the 9 - 11 age group. Christa and Matilda were presented with their awards in assembly. We look forward to reading their stories in the Newsletter.

Please keep up to date with our school news at <http://www.hawes.n-yorks.sch.uk> or contact school via email - [hawes@ycatschools.co.uk](mailto:hawes@ycatschools.co.uk). We also have a school Facebook page where you can view our learning in school.

**The accuracy, appropriateness or legitimacy of any product or service advertised in this publication is the sole responsibility of the advertiser and not of the Upper Wensleydale Newsletter.**

**DEADLINE FOR COPY FOR THE  
NEXT ISSUE IS  
TUESDAY FEBRUARY 21st  
PUBLISHED ON MARCH 1st**



### Eunice the Ewe

Last month I was hiding on page 15 above the R in the Greiff advert and the lucky winner of the £10 prize is Thomas Pittaway of Doncaster.

Where am I this month? To enter for the £10 prize, please include your postal address if replying by email.

### Old Photos of the Dales Exhibition

An exhibition of old photographs of the Dales is open at The Garden Rooms at Tennants.

Dales residents have contributed fascinating photographs from the 1940s to the 1990s, capturing Dales life throughout the decades. From 1950s aerial views of towns and villages to fairs, shows and farming life mainly around Wensleydale.

The exhibition will also include a display of photographs from Tennants Auctioneers' own history.

The free exhibition is open daily until **Sunday, February 12th.**

<b>In This Issue</b>	<b>Page</b>
Guest Editorial	2
Hawes School News	3
Competition	4
Wensleydale School News	7
Story Writing Competition Results	8
Bainbridge Shop	11
Upper Wensleydale Benefice Services	12
Penhill Benefice Services	14
BAWB Federation News	16
What's Ons	20
DCM News	20
The Weather in 2022	24
Prunings	26
Heavens Above	29
Sycamore Hall News	30
The Bells of St Margaret's	34
Mystery Picture	35
Learn Bell Ringing	36

## February Competition

### Herbs and Spices

A flavoursome competition this month as all the answers are types of herbs or spices.

1. Very wise.
2. Are these players confused?
3. In perfect condition.
4. It's a riot for fans.
5. This one is an arrogant sort.
6. One hundred Roman bee homes.
7. It can always be found in changing ergonomics.
8. A truck more unwell.
9. A TV soap and hesitation.
10. It's just copper for sixty seconds.
11. Henry's galleon but the stern goes before the bow.
12. Married to Sybil.
13. Sounds like it can be served, saved or killed.
14. It's a former U.S. president missing a letter and with zero support on either side.
15. It sounds like part of the school year for Mr Morecambe.
16. This art admin needs to be reformed.
17. On a table in parliament when the Speaker is in the chair.
18. Head Harry's shortened wife.
19. Is it a combination of jam or ram?
20. Swiss liver mix.

Please send in your answers to arrive by **Tuesday, February 21st.**

Don't forget to include details of your nominated charity which will receive the £20 prize should you win.

## MFW Aga & Boiler Services

Specialising in the servicing of Aga / Rayburn cookers and domestic oil boilers.  
All Dales area covered

For service please contact Mike on:

Phone: **01609 779751** Mobile: **07731 349276**

## December Competition Answers

1. Merry *Christmas* pudding
2. Fairy *lights* how
3. Yule *log* jam
4. Chimney *breast* stroke
5. Chest *nut* roast
6. Virgin *Mary* port
7. Holly *tree* house
8. Mistle *toe* cap
9. Sea *holly* berry
10. Egg *white* lie
11. Christmas *card* inal
12. Mince *pie* chart
13. Kind *red* nose
14. Christmas *present* tense
15. Cherub *in* ply
16. Christmas *stocking* feet
17. Part *ridge* tiles
18. Ba *con* stable
19. Snow *drift* wood
20. Shadow *boxing* day

There were a few entries this month and the winner chosen at random was Rebecca Alderson of Hawes whose nominated charity to receive £20 is the Rosemere Cancer Foundation in Preston.

## Drop-off points and contacts

For news, articles, reports, letters, What's On dates, competition entries, suggestions and comments:- All 01969 numbers.

<b>Hawes:</b>	Community Office	667400
<b>Bainbridge:</b>	Sylvia Crookes, 3, Bainside	650525
<b>Askrigg:</b>	Sykes Shop,	650535
<b>Carperby:</b>	Anthony Abraham Hall Garth	663243
<b>West Burton:</b>	Nadine Bell, Margarets Cottage	663559
<b>Aysgarth:</b>	Hamilton's Tearoom	663423
<b>Redmire:</b>	Kevin Davis Westholme	624165
<b>Thoralby:</b>	Neil Piper	663747
<b>West Witton</b>	Christine Barker, Chestnut Garth	624934

## £2 Adult Single Bus Fares Until March 31st!

All bus operators in North Yorkshire are participating in this government-funded scheme, including the locally-based Little White Bus. With LWB, the fare from Gayle and Hawes (and most intermediate stops) to Leyburn or Catterick/Tesco is currently just £2 each way i.e. £4 return, making 2 single tickets cheaper than a standard return ticket. Also from Gayle and Hawes, the Sunday DalesBus 856 is just a £2 single fare each way to and from Leyburn, Bedale and Northallerton. Again, all journeys that are normally more than £2 are fare-capped at £2 for a single adult fare until **March 31st**.

I have referred to journeys as if they all started in the Upper Dale - but buses go both ways, providing a great opportunity for friends to visit you - and also for local traders and accommodation providers to encourage people to come to Hawes without their cars until the end of March. Businesses with social media at their fingertips might attract new customers by offering a refund (or other benefit) on sight of same-day £2 bus tickets for B&B, purchases of walkers' winter clothing, weekday shopping, Sunday lunches etc. (Remember to mention any restrictions or T&Cs), There's still just time to advertise special offers in the March UWNL too! (Valid bus passes apply as usual during the £2 offer).

The LWB scheduled service between Garsdale station and Hawes is also just £2 each way for a single adult fare at present (excluding special bookings), whilst Northern's special winter offer for holders of Dales Railcards lasts until **April 1st**.

The £2 maximum bus fare is a national scheme, widely available for the next two months - and an opportunity to show that reduced bus fares attract more passengers. Local timetables are available from LWB and DalesBus websites; in the UW Community Office in Hawes, and on [www.harbus.org.uk](http://www.harbus.org.uk) (the website of the Hambleton and Richmondshire Bus Users Group). Check all travel times - including return times - with care before departure!

Dales and District buses are now accepting contactless payments.

**Ruth Annison**

## Leyburn Arts and Community Centre

The Centre is open during February and March as part of the Warm Spaces initiative on **Wednesdays, 10.00am to 4.00pm** and **Fridays, 10.00am to 2.00pm** in the Café and Little Shop in the Centre. Free Tea or coffee is available, newspapers, magazines, jigsaws and welcoming company provided by our volunteers.

A full programme of events is coming up during February including a fascinating interactive talk by Food and Costume Historian Jane Sammells intriguingly entitled 'Undressing a Medieval Lady'. Coffee and cake are included but there is also an opportunity to try food from the period.

The other special event is Othello, a National Theatre Live cinema screening. After the sell-out concert by Dixon County Band they have agreed to return in March so please buy your ticket early so as to not be disappointed!

February is also renewal time for our 100 Club so if you fancy a little flutter each month with an opportunity to win one of three cash prizes, please get in touch, only £12 for the year.

All our volunteers are entitled to a 50% reduction on tickets for special events so if you have time on your hands and may be interested in joining us, please get in touch. Tel: **01969 624510**.

**Studio Wall Mirrors** - Following the installation of a sprung dance floor, we aim to provide the Dance School with large professional wall mounted mirrors to allow them to get even more benefit from our Dance Studio and make it into an excellent teaching area particularly for our young dancers but also for our beginner Sequence Dance Group.

Mirrors in a dance studio serve two main general purposes. Firstly, teachers are able to see themselves and the students behind them at the same time. Secondly, the students are able to see themselves while they are dancing.

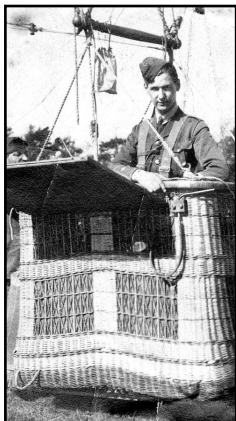
For more information or to donate to this campaign please use our Just Giving page - [www.justgiving.com/campaign/StudioWallMirrors](http://www.justgiving.com/campaign/StudioWallMirrors).

## Friends of the Dales Countryside Museum

The adventures of a Hawes bootmaker high over the front lines during WW1 feature in the latest edition of Now Then, the annual magazine of the Friends of the Dales Countryside Museum.

Doug Grainger was 20-years-old when he had to bail out of a balloon basket and drift down among anti-aircraft shells and machine-gun bullets.

As an RAF balloonist he had other narrow escapes which he described in his memoir written after he returned to work in the family's boot and shoe making business in Hawes. This memoir, of which there is an abridged version in the magazine, is one of many fascinating stories recorded in the Norah Worth archive at the museum.



There is also the story of how Norah Worth in 1974 began collecting her extensive archive of press cuttings and information about Hawes.

A new collection of material donated to the museum led to another fascinating story, telling how Joseph W G Smith founded not only Aysgarth TB Sanatorium in 1917 but also developed an internationally renowned hackney horse stud based in that village.

Among the other interesting features in the magazine there are photographs of peat cutting at Hag Dyke near Kettlewell up to the 1930s, and a tour of milestones in Upper Wensleydale.

The magazine costs £4 and is available from Dales Countryside Museum at Hawes.

dales **web** solutions  
bespoke web site design

### All aspects of Web site design.

Visit: [www.daleswebsolutions.co.uk](http://www.daleswebsolutions.co.uk)

Email: [info@daleswebsolutions.co.uk](mailto:info@daleswebsolutions.co.uk)

Tel: 01969 666174 or 07931 822736

## Come and Try Pickleball

A chance to try Pickleball at Hawes Market House on **Monday, February 13th** from **7.00pm to 9.00pm**.

Pickleball is a fun, easy to learn, tactical game, played on a badminton court over a low net, with an airflow/whiffle plastic ball and a paddle a little larger than a table tennis bat, which has elements of tennis, squash, badminton and table tennis.



It is less hard on the body and suitable for all ages (people of 80+ are playing it!) and all levels of fitness, ability and mobility.

Cost depends on numbers. My services are free, but need to cover the cost of the hall, e.g. 8 people = £3 each, max £5 per person.

If you are interested just turn up but it would be great if you could email me [janeportnell@btinternet.com](mailto:janeportnell@btinternet.com) or message/whatsapp me **07951 111259** so I have an idea of numbers. Happy to answer any questions too.

The following link <https://www.youtube.com/watch?v=UIsDAZxzwNU&t> shows you how you play.

**Jane Portnell**



## Hamilton's Tea Room At Yoredale House,

*Aysgarth*

*Licensed Tea Room*

*HOMEMADE FOOD,*

*Light Lunches, Clotted Cream Teas*

*Open Feb-Nov, 10.30am - 4.30pm*

*Closed Mondays & Tuesdays*

*Tel: 01969 663423*

*[info@yoredalehouse.co.uk](http://info@yoredalehouse.co.uk)*

## Wensleydale School News

### Climbing Personal Mountains

If you ever decide to climb Mount Everest, you'll do it guided by a Sherpa. Sherpas are an indigenous local people that have lived in the Himalayas for thousands of years. Their role is to guide you at each step of the journey, prepare the route, carry your kit, and protect you in risky spots. They are extraordinary.

A lot of us have a tendency to look for a Sherpa-like figure in the rest of our lives: someone who will tell us which way to go, and how to find the correct, right, perfect path.

But it's not possible to live your happiest life if you assign someone else to lead the way. We are all climbing our own mountains, and every single person's mountain is different. No one else can possibly know the path to the summit of anyone else's mountain, because it is the act of climbing that creates the path. No one can lead the way, except you.

This is, for students at the Wensleydale School, the new challenge set down in January. We are encouraging students to start climbing. We have tasked the students to do one thing that they long to do, are curious about, or that makes them feel alive. Through our extensive enrichment programme, we are inviting everyone to try something new, sign language, sailing, animation, gardening, anything that they are curious about.

An assembly by Mr Barnett introduced the concept of their own personal mountains. This is true in academic learning as well as extracurricular activities. How one person revises, learns or is successful in education is very different from another. All students have a different start point and end goal in terms of grades and aspirations, so it is important they work at their own 'mountain' in their own way, towards their end point.

In addition, we are urging students to stop making comparisons with others. Imagine, for example, that you climbed Mount Everest and your friend climbed Penhill. Would you compare the time-to-summit against their climb? Of course not. They're completely different mountains! It would be ridiculous.

And yet, we do this all the time with other people's mountains, and it has a negative effect on our well-being.

Research found that using social media tends

to promote upward comparison, the comparison to others who seem to be doing better than us. "Their mountain looks pretty great in that picture, doesn't it?" we say to ourselves, not seeing the myriad other challenges that occurred as they climbed. Often students compare themselves against others and social media has not helped this in any way. Upward comparison leads to shame and envy, emotions that harm us. One study found that using Facebook to check on other people's climbs creates beliefs like, "others have better lives than me" and "others are happier than me".

To be successful in our climb, we need to have friends who cheer us on from their own mountains and who we support and celebrate, too. So this term, we are supporting anyone who has the courage to try something new, focus on their 'mountain' and to always remember that the students are in charge of their own expeditions.

**Julia Polley, Headteacher**



### WOODCRAFT STUDIO & TIMBER SERVICES

formerly Gayle Mill Trust

Gates, posts and fencing to suit all your needs.  
Timber sales of larch and local hardwoods cut and delivered for your own project.

Mobile sawmill to cut your own trees into planks or beams.

Seasoned firewood delivered in dumpy bags and trailer loads throughout the dales.

Ring **01969 667320** or **07967 844636**  
for further details

### *Rhodes Pet & Wildlife Supplies*

*The Neukin, Market Place, Hawes*

**07376 056998**

*www.rhodespetshop.co.uk*

*rhodespetshop@outlook.com*

*Open 9.30am-5.00pm*

*Closed Wed and Sun*





## UWNL Children's Story Writing Competition

We received an overwhelming response to our writing competition this year with the highest number of entries received since the competition began. We challenged children aged 7-11 to write a 300-500 word story about anything they wanted and we were amazed by the imagination of our young writers in Wensleydale.

The competition was set up in memory of our founding editor Alan Watkinson who championed writing in the young. Jane Huntington (former English teacher) was our judge this year and she was very impressed with the high standard of creative writing and loved reading the wonderful stories whose subjects ranged from time travel to dragon's eggs and funny monsters. Jane found it extremely difficult to pick a winner and said congratulations must go to all our entrants. The schools wanted to thank Jane as she took time to write an encouraging comment for every single child who entered a story.

And the winners are.....

### Years 5-6 Category:



*Matilda and Christa*

The winner was **Christa Fagg-Rawlence** and the runner up was **Matilda Chen-Robinson** both from Hawes Primary School. Highly commended certificates were also awarded in this category to Tommy Scar and Georgie Bell (both from BAWB Schools).

### Years 3-4 Category:

The winner was **Otis Middleton**. The runner up was **Rene Oliver** both from the BAWB Federation of Primary Schools.



*Rene and Otis*

Jane presented the prizes to the winning children giving some wonderful feedback on why their stories stood out. Karen Jones from the Newsletter editorial team presented book tokens and the Alan Watkinson Memorial Shields to the Primary Schools and thanked them for their enthusiastic support of the competition.

The winning stories in each category are published below and on page 10. The stories from the runners up will be in the Newsletter's March issue. We hope you enjoy reading them as much as we did.

---

## Time Must Go On

By **Christa Fagg Rawlence**

Zoe, with tears rolling down her cheeks and dressed in a black T-shirt and trousers rummaged through an old, dusty box. Her family were looking through her Great-Granny Betty's house. Sadly, Betty was no longer with them. Her death had come at the same moment as Queen Elizabeth's. With double mourning Zoe felt she was drowning in sadness. "It won't be that bad Zoe", her mum said coming up behind her and placing a hand on her shoulder. It was clear she was fibbing. Then she walked slowly away. Zoe lifted up an old pile of photographs and wiped off the grime and dust with her damp tissue. Something clicked inside her head as she stared at the black and white photo in her hand. The image was of a street party and sitting at a long table covered with food sat a girl. But not just any girl, a girl with twinkling eyes and rosy cheeks just like her Great-Granny. Hang on! It was her Great-Granny! Suspiciously, Zoe looked behind her. Nobody was there. She leaned closer to the photo then suddenly her whole body seemed to



plunge into the picture. She was there in the image! "Hello?", she whispered tentatively.

"Hello there where did you come from?" A girl next to Zoe with a fuzz of curly, orange hair and a green lacy pinafore blinked in surprise.

Carefully, Zoe scanned the table searching for the face she knew was there. Then she saw it. Clumsily, she ran towards the girl she knew so well. Though Betty herself saw Zoe stumbling towards her she didn't react and instead sat with a distant look in her eyes. She turned to a girl next to her and said, "I simply can't believe it. Think. A woman on the throne! Queen Elizabeth the Second. I only wish I could be there to see her coronation".

It was only then Zoe realized that she had gone back in time, seventy years ago to the day when the late Queen began her reign. What a thought! History was soon to be made and the footage that Zoe had seen so many times on television recently was about to be recorded.

Everybody was dressed in bright, pretty clothes. Girls wore silk dresses with full skirts and sashes in blue, red, and white. Boys wore smart suits and little bow ties in the same colours, the British flag. In fact, Zoe felt quite inferior in her black, plain outfit. As she looked around she also saw differences from the London she knew and the London of 70 years on. Instead of clean, tidy houses there were often piles of rubble and blackened walls and Zoe remembered that it was less than ten years since WW2 had ended. "Who's this?" somebody asked.

Suddenly, Zoe was sucked back to her own time. She was back in her Great-Granny's house clutching the photo to her chest. Then she knew that time must go on.

---

**Judge's comments:** An impressive piece of story telling and a very satisfying read. You show a sensitive understanding of the feelings in a family when a well-loved member dies. But your story also cleverly links this personal loss to another, national event, the Queen's death, and you use the photo of your Great-Granny as a girl to slip between the worlds of today and seventy years ago. Your descriptions of both worlds have clear, well-chosen details which make their settings real.

This is subtle writing of a very high quality. Keep writing!

**NORTH YORKSHIRE  
MIDDLEHAM ANTIQUES FAIR  
& COLLECTABLES  
2023**



Middleham Key Centre  
DL8 4RA  
10am-4pm



Refreshments by Fairhursts  
£1 Entry



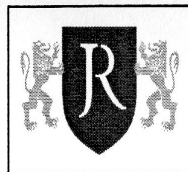
**Dates for this venue:**

Sunday January 29<sup>th</sup>  
Sunday February 26<sup>th</sup>  
Sunday March 26<sup>th</sup>  
Sunday April 30<sup>th</sup> ?



(Further dates undecided due to venue problems)

To Book A Table Please Ring  
01969 625692



**Robin Jessop**

**Free Market Appraisals**

For Selling & Letting Rural Property.  
Specialists in Selling by Auction.

Market Valuations for Tax Planning,  
Lending, Compensation and Council Tax  
purposes

Marwood House, Railway Street, Leyburn  
Tel: 622800



**Edie Peacock  
Hairdressing  
At the Parlour**

**Call: 07817 312906**

## One By One

By Otis Middleton

Once upon a time there lived a group of strange monsters. They were: Tees, Loploplop, Pki, Computer expert, Bonker, Landlord, Math and Oldh. BUT Oldh was murdered in 2021. So that brings us to the MURDER MYSTERY!!!!!!

So, a week later they started an investigation. All the monsters tiptoed towards the smoggy, haunted mansion that Oldh had last been seen in. "Why did we come to th..thi..this mansion?" said Tees, giggling.

"Be quiet," said Landlord. "No wonder you look like a clown, you laugh all the time, plus you know why we're here."

"I have o..only got red curly hair and a..a white face and big shoes and a horn," said Tees seriously.

"And that's all a clown will have. I am spaghetti wearing a wig," said Landlord, crossly.

"And I am a crocodile!" said Math.

"I am a brain," said Comp.

"Loploplop," said Loploplop.

"I am a walking, talking, bird-eating, mountain-making, BANANA!!!" said Bonker.

"Me black bird," said Pki.

They stopped arguing suddenly when a scaly, red, fierce dragon swooped down and burnt the mansion down to smithereens.

Unfortunately, Landlord went with it and Loploplop got very badly injured, VERY BADLY!!!

So, they went to a biiiig hill, but questions weren't answered.

But what if... NO!! said Bonker, interrupted by Comp.

"Loploplop got very badly injured," said Comp, "And on top of this there should beeee, a ha, a med kit now we can bandage up all your wounds and it will take 4 days. We need to make a machine. Now help me."

So, Comp made screws and bolts out of his imagination,

Math made a subtraction plank,

Tees made 3 massive red balls,

Bonker made yellow paint (trust me you don't want to know how he made it)

Loploplop just laid down and made a few dramatic scenes, which wasn't helpful.

Pki made wings. It would go on forever, and it took 3 days so they were impressed.

The result was amazing it had bendy arms and a smiley face and a water fetcher it could fly and it was ... I think they went too far with it.

They were about to put it on Loploplop and then the Grim Reaper came and took his soul.

"There goes another one," said Tees.

"Me down and dull," said Pki.

"We need who did it now," said Comp.

"Why don't we just kill 2 monsters and hope for the best?" said Tees.

"YES!!!" said Bonker and Comp and Math.

WAIT don't do it!

They died

"Now what should we do?" said Tees.

"Ye what should we do?" said Math.

"DIE!!!!!!" said Pki and he immediately killed them with the infinity gauntlet with the snap.

Pki had got his revenge ...

3 years before, all the other monsters were mean to him every day because they laughed at him because he said me at the start of every sentence he thought this was mean. He was happy without them.

Happy without them.

---

**Judge's comments:** A great story-well done! You're in control of your story, its plot and weird, wonderful characters. Good touches of humour and a range of well-chosen words. Successful writing. An impressive piece of work.



**LIBERTY**  
FABRIC

Quality fabrics for quilting,  
dressmaking, etc., sewing kits &  
accessories, plus wool/yarn.

**Abbotstone House Collection**  
**Little Shop on the Hill, Hawes**  
**07921 058803 or 01969 667988**

## A New Shop For Bainbridge

Just before Christmas, the shop at Sycamore Hall closed after almost six years of operation. This was a huge loss to the community and particularly to the residents. However, everyone is delighted that a successor was found and plans began for a new shop to open.

After a rather frantic week of decorating and refitting, the new 'Sycamore Country Store' opened for business on January 9th under the ownership of Karen Prudden, who had worked in the previous shop since it opened.

Karen is keen to provide a much-needed service to both residents and staff at Sycamore Hall, and also to the local community and visitors. Initially, the shop will be open **9.00am to 1.00pm, Monday to Friday**, but this is likely to change when the weather improves and visitor numbers increase.

The shop stocks a wide range of everyday essentials, including food, cleaning products, toiletries, pet food, fruit and veg, dairy products and lunch options. The new 'pick & mix' sweet station is already proving popular amongst the bigger 'kids' in the community!

Karen is keen to work with local producers and suppliers and is looking to stock as much locally produced stock as possible. There are regular deliveries from Cockett's Butchers and Bakers in Hawes and orders from there can be

placed via the shop for collection or delivery. Orders can also be placed via the shop for meat from Hammonds Butchers in Bainbridge. Fresh sandwiches are available every day, along with fresh milk and eggs. Home baking/indulgent treats will be available on most Fridays.

In due course, the shop will also be stocking alcohol and tobacco products and there are plans afoot for other exciting developments as things settle down.

Why not drop in to see just what is on offer and to catch up with Karen? There's always plenty going on and lots to talk about! Karen encourages customers to place orders where possible to ensure they are not disappointed and delivery is available in and around Bainbridge, by arrangement.

For further information, contact Karen on **07813 264081** or checkout the Facebook page.

### Domino Drive

Tuesday, February 14th at 7.00pm

Stalling Busk Schoolroom

All welcome

### Alex Kravchenko

BSc (Hons) MChS

#### Chiropodist / Podiatrist

Member of the Health Professions Council

Practising at

Yorkshire Foot Clinics  
25, Frenchgate, Richmond DL10 4NZ  
Bishop Auckland/ Hawes 667449

Clinic Tel 01748 850020

Email: [yorkshirefootclinics@yahoo.com](mailto:yorkshirefootclinics@yahoo.com)

### Bricks and Mix

New to area

Property Maintenance service: specialising in pointing, bricklaying, patios, plastering, guttering. All general repairs considered.

07951 785876 or

[bricksandmixltd@yahoo.com](mailto:bricksandmixltd@yahoo.com)

## EFFICIENT HEAT

OIL BOILERS SERVICED  
AND REPAIRED

Contact Nick

07729 105466 / 01969 667847



**Pennine Outdoor  
Fabrics**

now incorporated into  
Temptations Craft Boutique

**Premium Jacket Fabrics**

3 and 2 layer Breathable & Waterproof  
Free Pattern with purchases over 2m

[www.pennineoutdoor.co.uk](http://www.pennineoutdoor.co.uk)

[www.temptationsbentham.co.uk](http://www.temptationsbentham.co.uk)



## Upper Wensleydale Benefice Services in February

	<b>St Mary &amp; St John's, Hardraw 9.00am</b>	<b>St Margaret's, Hawes 10.30am</b>	<b>St Oswald's, Askrigg 10.30am</b>	<b>St Matthew's, Stalling Busk</b>
<b>February 5th</b>			The Gathering - Benefice Family Communion	
<b>February 12th</b>	Morning Prayer	Ecumenical Morning Prayer	Holy Communion	Soup Lunch from <b>12.30 - 1.15pm.</b> <b>1.30pm</b> Holy Communion
<b>February 19th</b>	Holy Communion	Praise in the Pen Family Service	Morning Prayer	
<b>February 21st</b>				Shove Tuesday Pancakes <b>Noon - 1.30pm</b>
<b>February 22nd</b>	Ash Wednesday Service <b>7.00pm</b>			
<b>February 26th</b>	Morning Prayer	Holy Communion	Outreach Café Style Service	<b>2.30 - 3.00pm</b> Evening Prayer <b>3.15pm</b> Pathfinders
Evening Prayer by telephone is held at <b>4.00pm</b> every <b>Sunday</b> . For details see our website - <a href="http://www.upperwensleydalechurch.org/services">www.upperwensleydalechurch.org/services</a> .				

### Love and Success

January saw 'Blue Monday' and 'National Hug Day'; two very different ways of seeing the world. Hopefully the latter succeeded in balancing out the former, but as we walk into February the calendar focusses on Valentine's Day. At school (as a student and as a teacher) I remember the fun had in trying to succeed in gaining the greatest number of cards. I confess that I often cheated (!) but the opportunity to show and to share love has always seemed like a good idea to me, no matter what day of the year it is. Even with the current pressure on household budgets, it's anticipated that the UK economy could benefit from our purchased expressions of love to the sum of one billion pounds this month.

I came across one company of florists offering a forest of 100 roses for the financially successful; 6 of them encased in 24 carat gold and the rest finished with a sprinkling of 'Diamond Dust'. Yours for a mere £20,000.

But love is so much more than an expensive price tag or even an emotion we feel; it's a decision we need to make and make regularly with one another. By doing so, we can transform the world around us. The Bible speaks in great detail about the nature and expression of love and it was seen as so important by Jesus that he actually made it a commandment. "A new command I give you: Love one another." <sup>Jn13:34</sup>

I always appreciate the items of news, often at the end of the bulletin, that focus on some expression of love that has succeeded in making the world a better place. Perhaps we should have more of them. But how about this from Charlie Mackesy's wonderful book, 'The Boy, the Mole, the Fox and the Horse.' "What do you think success is?" asked the boy. "To love" said the Mole.

What a lovely way of seeing the world. May we all have the heart to give it and the grace to receive it.

*Rev Dave*



on weekends and over the Christmas period to do the work whilst the children weren't in the setting.

All the children have settled back in really well following their Christmas break. We would like to say a very big thank you to the Upper Wensleydale Newsletter, Hawes Market Hall Tolls Trustees, The Rodger Stott Community Grant, The Wensleydale Creamery and Alison and Sheila who all very kindly donated funds to Dalesplay to help paint the setting, replace the children's toilet cubicles, fix the sand pit lid and gate and replace our outdoor signs. We are very grateful to Brian Peacock, Ivan Baranasic, Mike Fothergill and Dave Bushby who came

The Sunshines children have loved playing in the role play vets and learning about different animals, where they live and how to care for them. The Ducklings room have based their learning around stories, they have been doing the dinosaur stomp, making masks, exploring new textures and developing their listening and understanding skills.

We have been celebrating Chinese New Year, sampling some of the traditional foods, making lanterns and learning how they celebrate.

## Applegarth Couture

[www.applegarthcouture.co.uk](http://www.applegarthcouture.co.uk)

Made to measure  
Wedding, evening and daywear,  
tailoring and alterations.

Contact: Rebecca Atkinson,  
Aysgarth

01969 629398 or 07521 030870



## HAIR, NAILS AND AESTHETICS

Aqua Facial  
Micro Needling Facial  
Scalp Micropigmentation  
IPL Laser Treatment

Thread Vein Removal

Skin Tag Removal

Brow Microblading and Ombre

Tel Hawes 01969 667449

[info@twistedah.com](mailto:info@twistedah.com)

Your local family owned Coach Operator



**COACH HOLIDAYS &  
FULL DAY EXCURSION PROGRAMME**

Call 015242 41330 for our current brochures or visit  
our website to view up and coming Holidays  
& Day Trips

Email: [enquiries@bibbys.co.uk](mailto:enquiries@bibbys.co.uk)

Website: [www.bibbys.co.uk](http://www.bibbys.co.uk)

## WANTED - SCRAP CARS AND COMMERCIALS

FREE collection from all areas.

[www.scrapcarmacumbria.co.uk](http://www.scrapcarmacumbria.co.uk).

07825 293099

## D BUSHBY Joiner/Cabinet Maker

Doors, windows, staircases etc.  
made to measure.

Skirtings, doors, shelves fitted and  
many more odd jobs.

For a prompt and efficient service ring

David Bushby: 01969 666048 or  
07980 201579

## DALE HEAD GARAGE

Turfy Hill, Hawes

Tel.01969 667483

Stocking a wide range of eco  
cleaning products plus

A REFILLING STATION

Bring your empty bottles and fill again.  
Reduce plastic waste and save money!



## Penhill Benefice

**Church Services:** Before making any journey please check our website at [penhillbenefice.co.uk/services](http://penhillbenefice.co.uk/services) for updates.

There will be a Telephone Service each **Sunday** at **9.30am**. Dial **0333 0110 946** and enter room number 61337190# and PIN 7450#. (There could be a charge).

### Sunday, February 5th:

- 9.30am** Morning Prayer,  
St. Mary's, Redmire.
- 9.30am** Holy Communion,  
St. Margaret's, Preston under Scar.
- 11.00am** Holy Communion,  
St. Andrew's, Aysgarth.
- 11.00am** Holy Communion,  
St. Bartholomew's, West Witton.

### Sunday, February 12th:

- 10.30am** Holy Communion Benefice Service, St Mary's, Redmire.
- Sebastian and Rachael Rab will speak about the work of the Jonas Centre.

### Sunday, February 19th:

- 9.30am** Holy Communion,  
St. Mary's, Redmire.
- 9.30am** Holy Communion,  
St. Margaret's, Preston under Scar.
- 11.00am** Morning Prayer,  
St. Bartholomew's, West Witton.
- 11.00am** Holy Communion,  
St. Andrew's, Aysgarth.

### Wednesday, February 22nd:

- 7.00pm** Ash Wednesday Service.  
St. Margaret's, Preston under Scar.

### Sunday, February 26th:

- 9.30am** Holy Communion,  
St. Bartholomew's, West Witton.
- 11.00am** Morning Prayer,  
St. Andrew's, Aysgarth.
- 3.00pm** Evening Prayer,  
Thornton Rust.

## February Mid-Week Services:

**Thursday 2nd, and 16th at 9.30am.** Holy Communion, at St. Bartholomew's, West Witton.

**Church Coffee Morning: Wednesday, February 1st** from **10.30am to noon** at Redmire Village Hall.

**Church Afternoon Tea: Wednesday, February 15th** from **2.00pm to 4.00pm** at Redmire Village Hall.

**Lent Lunch: Friday, February 24th** from **noon to 1.30pm** at Redmire Village Hall. Soup and cheese lunch with coffee and teas. No fixed charge, donations to Christian Aid.

## McGARRY & Co. Solicitors

**From small personal matters to larger commercial transactions, for personal advice in an impersonal world.**

**Market Place, Hawes,  
North Yorkshire DL8 3QS  
Telephone No 01969 666290  
or email  
[office@mbsmcgarry.co.uk](mailto:office@mbsmcgarry.co.uk)**

**Farm and Home visits by appointment**

Regulated by The Solicitors Regulation Authority  
No. 553987

**OREILLY** Chartered Accountants

At O'Reilly's we provide a broad range of accountancy and taxation services to our clients.

Our friendly and approachable team are dedicated to delivering a high standard of service throughout the year.

We act for many individuals and businesses with different levels of complexities.

For more information visit our website at [www.o-reilly.co.uk](http://www.o-reilly.co.uk) or contact us on **01969 667428** to arrange a free initial consultation.

## Manor House Askrigg Hospice Charity Sale - Thank You

On Saturday, December 3rd, Alwina Rigby held a charity fundraising event at her home, Manor House in Askrigg in aid of the Herriot Hospice Homecare services. The charity's services are provided in the area of Hambleton and Richmondshire - [Hospice Overview | Herriot Hospice Homecare \(herriothh.org.uk\)](http://Hospice Overview | Herriot Hospice Homecare (herriothh.org.uk)).

Alwina offered a wide range of seasonal gifts all of which were handmade by herself from natural materials foraged locally and other materials recycled from local sources. Gifts included hand-made wreaths, miniature decorated Christmas trees and hand-sewn Christmas stockings.

From the proceeds and donations Alwina was able to donate £365 to the Hospice charity. Alwina, along with Lucy Turner, Community and Events Manager at Herriot Hospice

Homecare would like to thank everyone who supported the event with purchases, generous donations and general encouragement.



The photograph shows Alwina with the cheque and with Lucy outside the charity's shop in Thirsk.

Chris Rigby (Alwina's husband)

### Better Health Massage

Mobile Therapist, 8am to 8pm, 7days  
Improve overall general well being, inside and out.

**Ruth Boddy** MFHT, ITEC Dip. Massage  
[ruth@betterhealthmassage.co.uk](mailto:ruth@betterhealthmassage.co.uk)

Fully qualified and insured  
**07773 781803**  
[www.betterhealthmassage.co.uk](http://www.betterhealthmassage.co.uk)



### WHITE ROSE HOTEL

Askrigg  
**01969 650515**

**FRESH LOCAL  
PRODUCE COOKED TO ORDER**

**Real ales, friendly atmosphere  
Lunches noon - 2.00pm  
Dinner 6.00pm - 9.00pm**

**Sunday carvery,  
noon to 2.00pm**

**nh flooring**  
Carpets • Laminates • Vinyls • LVT  
Solid & Engineered Wood • Accessories

### For All Of Your Flooring Needs!

NH Flooring in Richmond can fit quality flooring to any Houses, Apartments, Offices, Holiday Lets, Hotels, Pubs, Vans and anywhere else you want it.

**We offer a complete flooring service including:**

- Supplying, Fitting, Screeding & Levelling,
- Repairing, Uplift & Removals, Trimming,
- Edge Whipping, Cladding and much more.

**NH Flooring - Richmond**

[www.nhflooring.co.uk](http://www.nhflooring.co.uk) **01748 822834**  
Unit 6 Borough Court, Borough Road, Richmond. DL10 4SX

**OREIFF**  
PLUMBING & BATHROOMS  
"The Greiff Spirit"  
07984562708



## BAWB School News

Happy New Year! We have settled in really well to our new term here in the BAWB Federation. Our KS2 are doing incredibly well with their instruments, every pupil is learning either the trumpet, trombone, euphonium or saxophone. It is wonderful to see them reading music and developing their skills.

We enjoyed taking part in the 500 words competition last term, it was so exciting to see some great results and really constructive feedback. Thank you to Jane and Karen for coming to present the trophies.

To enrich their history topics, this half term our Year 3 is heading to the Dales Museum and our Year 2 to Newby Hall. The Year 2s have also been very lucky to have Mrs Stone visiting the class with an array of old toys. The spinning top went down very well! Our Year 1 and Year 2 have a mobile zoo coming to school to support their science lesson. The pupils are incredibly excited about seeing their learning come to life, literally!

As part of our community engagement our Nursery and Reception pupils have been spending time at Sycamore Hall each week. The pupils have been having a wonderful time playing dominoes and doing jigsaws with some of the residents. It is such a wonderful way to nurture a community spirit in our pupils.

Our term ahead is full of sporting events, making use of the MUGA at Yorebridge Sport and Leisure, and rehearsals for the annual Wensleydale Tournament of Song.

As we quickly approach the summer term, we will be holding an open afternoon for anyone who would like to visit our nursery provision. **Tuesday, March 28th, 1.30pm - 3.00pm**, at Bainbridge Primary School. Family members are welcome to stay and spend time in the setting. Please let us know if you would like to attend - [bawbadmin@b-a-wb.co.uk](mailto:bawbadmin@b-a-wb.co.uk) or call **01969 650336**. We look forward to seeing you and showing you our Early Years setting.

As always, our news and further information about the Federation is available on our website [www.b-a-wb.com](http://www.b-a-wb.com).



Stone House Hotel

*Give your sweetheart the gift of a romantic dinner at Stone House Hotel on the 11<sup>th</sup> or 14<sup>th</sup> February!*

*Savour our special 3-course Valentine's Menu while being serenaded by the sweet melodies of a professional harpist in our intimate restaurant.*

*Call now on 01969 667571 to book your table. We look forward to seeing you!*



### Visitor Centre Open Daily

#### 1897 Coffee Shop

NEW Wensleydale Sourdough Pizza

Dine for £10 offers

Seasonal cheese themed menus

#### Cheese Shop & Experience

Daily demos, sampling & gifts

NEW 'Taste of Yorkshire' Room

Guided pairings & accompaniments

Join our NEW Loyalty Card

FREE entry for 12 months

# JT/ATKINSON

## BUILDERS MERCHANT

### HAWES BRANCH

BRUNT ACRES TRADING ESTATE | NORTH YORKSHIRE | DL8 3UZ  
TEL: 01969 667413 | EMAIL: HAWES@JTATKINSON.CO.UK

BUILDING MATERIALS	LANDSCAPING
TIMBER & JOINERY	ROOFING
PLUMBING & HEATING	DRAINAGE

### PAINT MIXING SERVICE

## TRADE & PUBLIC WELCOME

WE'RE OPEN WHEN YOU NEED US

MONDAY-FRIDAY 7:30AM-5:00PM | SATURDAY 8:00AM-12:00PM



We have a Trustpilot  
trustscore of 4.8/5

See our range online: [www.jtatkinson.co.uk](http://www.jtatkinson.co.uk)

Join us on social media

[@JTMarketing](https://www.facebook.com/JTMarketing) [@JTAtkinsonBM](https://www.facebook.com/JTAtkinsonBM)



## Middleham and The Dales Local History Group

### 'Local Voices, Celebrated Nationally': The Dialect and Heritage Project

by Kathleen McGrath

**Tuesday, February 21st at 2.00pm**  
at Middleham Key Centre

Dialects are about people, and this Dialect and Heritage Project puts collaboration and communities at the heart of its research and public engagement activities. Working with our five partner museums, we involve the public as co-researchers, co-creators and co-custodians of knowledge. We are keen to get people talking about dialect, their linguistic and cultural heritage, and sharing their language, stories and memories with others.

In this talk, Kathleen McGrath will give an overview of the project and a local flavour of the rich collection we have digitised and are now sharing with the nation. We believe that dialect research should not be kept closeted behind university walls; it deserves (indeed demands!) to be shared. It belongs in the hands of the communities from which it was collected.

Kathleen McGrath is the Project Manager of The Dialect and Heritage Project at the University of Leeds. She is a passionate advocate of celebrating the heritage of everyday lives of the past and of sharing the enjoyment of words. Her research interests include local history, history of Ireland and Gaelic Literature.

Membership is £12 for 9 meetings and visitors are always welcome at £3 per meeting. For more information please contact **Tony Keates** on 01969 640436, [dotandtonyk@btinternet.com](mailto:dotandtonyk@btinternet.com).

## Dales Garage

Services we provide

Exhaust, Diagnostics, Brakes, Welding, MOT, Suspension, Timing Belts, Clutches, Batteries, Tyres, Services. All makes and models.

Unit 2, Hawes Ind Estate, Brunt Acres Road  
Hawes DL8 3UZ

[www.facebook.com/dalesgarage1](http://www.facebook.com/dalesgarage1)

Call – James 07399 513605

Tyler 07376 487776



## Bank Closure

Barclays Bank will be closing its branch in Leyburn on **Friday, May 5th**.

Barclays are keen to hear customers thoughts about this. To share them, visit the branch and speak to staff. Two weeks before the branch closes it will share a summary of the feedback and how it will continue to support the community.



## J.Parfitt Plumbing & Heating Ltd

All aspects of domestic / commercial plumbing and heating work undertaken

Phone: **01969 650665**

Mobile: **07882 005261**

[www.parfittplumbing.co.uk](http://www.parfittplumbing.co.uk)

## JOHN & TED DINSDALE

Builders - Roofers - Renovations - Extensions

*All aspects of property maintenance.*

*Fireplaces, Wood Burners supplied and fitted*

**01969 667 718 ~ 07511 424 865**



## Seasoned Firewood Logs For Sale

Hardwood and Softwood available.  
Bulk Bags, Bulk Loads and smaller bags available, also kindling bags.  
Can deliver locally – Hawes Area

**01969 667916** after 5.00pm

Mobile: **07974 507825**

any time; P.O.A

## New Owners For Corn Mill, Bainbridge

Three years ago in January 2020, we opened The Bake-Well in Askrigg. Little did we know that in as little as 12 weeks we would be closing the doors due to Covid. As we aren't very good at sitting still we began to bake and deliver food to anyone who wanted it. The support the local community gave us was just so overwhelming and beyond appreciated.

Over the past few years, we have gradually built the business up, fortunate to be able to make changes here and there and gradually develop a dedicated following. So we are very excited that we have now been given the opportunity to reopen the Corn Mill in Bainbridge. We know a lot of people including ourselves will be sad to see the Peacock family go but we will do our best not to disappoint.

The Bake-Well isn't going anywhere, we are just planning to expand on what we do. Our aim has always been to build a place we would like to go ourselves for breakfast/brunch/lunch or just coffee and cake; to bring our vision of hospitality to life in a place that we love. We are hoping to open the Corn Mill around the last week of April this year.

We would like to take this opportunity to thank you all for your support and best wishes so far. We have a feeling that 2023 is going to be one exciting, maybe slightly stressful, wonderful year! We look forward to seeing you all in Bainbridge and Askrigg.

**Bridie and Craig Stanley**

## Arena Physio and sports rehab.

physiotherapy & sports rehabilitation clinic

Assessment, treatment and rehabilitation of musculoskeletal pain, injury and dysfunction.

*Appointments available at:*

Carperby Football Club, Carperby,  
Leyburn, North Yorkshire. DL8 4DJ.

or

Darlington Mowden Park RFC  
Darlington Arena, Neasham Road,  
Darlington. DL2 1DL

**Tel: 01325 728092 Mob: 07799767075**

**www.arenaphysio.co.uk**

## Hawes Christmas Lights

2022 was a great year for the Christmas Lights, we put on a wonderful display for the festive period and Santa on the Road greeted the children at nominated stopping places along the route.

We are proud to say that all our lights not only put on a good display but are all LED so the power used by them is very low. The Christmas Lights are only possible thanks to the support received from our local community, in the form of the electricity gratefully provided by the businesses, and friends, the donations generously given by yourselves, the help and support those people who help on the put up and take down days. A big Thank You to everyone for their contributions.

And lastly, we would like to invite anyone who is interested to join our Christmas Lights Committee.

We are a small group of volunteers. We meet up throughout the year to check all the lights, make repairs as needed so all are ready for the next festive season. We would love some younger members to join us as the average age of our current committee is almost 70! Most of our work is done in the evenings so not to take away from people's daily activities, we do have a lot of fun. We would love some younger folks to join us so our community can continue to enjoy the lights for many more years to come.

**Wayne Webster**

## BLADESDALE KENNELS

Boarding, Day Care,  
Training, Grooming

Local Authority Licenced  
Find us on Facebook

**www.facebook.com/  
Bladesdalekennels**

Low House, Snaizeholme,  
Hawes DL8 3NB **Tel 01969 667996**



## Old Photographs

The two previous Newsletter issues featured the adverts (circa 1900) of Grainger's Boot & Shoe shop (now Sturman's Antiques) and John Thwaite, Grocer, of Liverpool House.

Chris Elphick, a former owner, contacted us to say that Liverpool House, just across the lane from Grainger's Boot and Shoe shop was purchased in 1918 by Richard Grainger from Margaret Storey and that John Thwaite was still the tenant there at the time. The purchase price was £400.

Liverpool House (now Herriot's Hotel and restaurant) was owned by Chris from 1978 to 1986.



Chris sent us this photo from 1978 which shows Liverpool House was a café at the time of purchase. Chris remembers selling Theakston's bitter at 63p per pint! Chris renovated the property and sold it in 1986 to a consortium of three Hawes traders. Note that Iveson's shop used to be Mason's Newsagents back then.

Nobody has contacted the Newsletter to inform us of the location of Olive House - a Boarding and Day School for Girls and Boys whose advert was also featured in the December Newsletter. Surely someone in Hawes should know!!

## Cumbria Stove Centre

Supply and installation of wood, coal and gas stoves.

- ◆ Flue and chimney lining services.
- ◆ Inglenook specialists.
- ◆ Fully qualified and experienced Hetas engineers

01539 821061 (day) - 01539 625227 (eve)  
SHOWROOM: 34a, Main Street, Staveley

## Firewood

### Seasoned hardwood logs

Tel: 01969 662692  
Mob: 07970 629227



Yore Mill  
CRAFT SHOP & GALLERY

### Yore Mill Craft Shop and Gallery

Open daily 10.30am to 4.30pm.  
Art and Crafts by artists and makers from the North of England  
And a range of crafts by independent makers from the U.K.

Overlooking the beautiful Aysgarth Falls

Yore Mill, Aysgarth, Leyburn DL8 3SR  
Tel: 01969 662829

## COPY SHOP

### PRINTING ~ PAPER

### SCANNING & LAMINATING

## Wensleydale Press

Burtersett Road, Hawes 01969 667575  
wpress@tiscali.co.uk



### James Peacock SOLID FUEL

### MERCHANT Bainbridge

Good quality fuels at competitive prices.  
Smokeless Fuel, House Coal, Logs and Sticks all available.

Deliveries in Wensleydale, Swaledale and Coverdale. No delivery too small.

### James Peacock PRIVATE HIRE

### Bainbridge

4-8 seats, Airport runs, pubs, stations, walking or cycling holiday, luggage transfers.....

Tel: 01969 650212 / 650465

Email: [james-peacock@btconnect.com](mailto:james-peacock@btconnect.com)

Web: [www.james-peacock.co.uk](http://www.james-peacock.co.uk)

**FEBRUARY WHAT'S ON LISTING;**  
*please add these dates to your Diary*

**News from Dales  
Countryside Museum**

**February**

- Until 12 Old Photos of the Dales  
Exhibition. Garden Rooms, Tennants.  
See p. 3.
- 1 Friends of the Dales Talk - Plastic Free  
Woodlands. 4.30pm. See p. 39.
  - 10 - 26 Dark Skies Festival. See p. 21.
  - 12 Blueboxt Music Workshop. 10.00am.  
Thoraby Village Hall. See p. 32.
  - 13 Come and Try Pickleball. 7.00pm.  
Hawes Market House. See p. 6.
  - 14 Domino Drive. 7.00pm. Stalling Busk  
Schoolroom.
  - 15 Swaledale Festival Volunteer Briefing.  
2.30pm. Reeth Memorial Hall. See  
p. 27.
  - 15 Penhill Ladies Talk. 7.30pm. Carperby  
Village Hall. See p. 37.
  - 16 Swaledale Festival AGM via Zoom.  
5.00pm. See p. 27.
  - 21 Local History Group talk. 2.00pm.  
Middleham Key Centre. See p. 17.
  - 22 Friends of the Dales Talk - Raptor  
Persecution. 4.30pm. See p. 39.
  - 24 Blueboxt Music Workshop. 10.00am.  
Thoraby Village Hall. See p. 32.
  - 25 Art, Craft and Coffee Day. 10.00am.  
Spindrift, Preston-under-Scar. See  
p. 35.
  - 25 Thoraby WI Charity Brunch. See p. 37.
  - 27 Swaledale Festival Friends priority  
booking opens. See p. 27.

**Service of Thanksgiving**

The family of the late **John Webster** of Sycamore Hall, Bainbridge warmly invite you to a 'Service of Thanksgiving' for his life on **Friday, February 3rd at noon** in St Oswald's Church, Askrigg. There will be a light buffet lunch afterwards at Sycamore Hall after the service.

It would be lovely to welcome you there.

The Dales Countryside Museum and National Park Centre are open daily **10.00am to 5.00pm** until the end of October, then **10.00am to 4.00pm** in November and December. Closed Christmas Eve to Boxing Day and January. Last entry one hour before closing.

Contact: [hawes@yorkshiredales.org.uk](mailto:hawes@yorkshiredales.org.uk) or call **01969 666210**.

We're looking forward to welcoming visitors back to the Museum this month. Our staff and volunteer team have been working hard behind the scenes getting ready for school visits, loaning object boxes, planning the 2023 events programme, re-packing and cataloguing the Norah Worth collection, photographing the collection and preparing the programme of temporary exhibitions. The Friends of Dales Countryside Museum have also been busy publishing their latest Now Then which can be bought from the Museum for £4.

We also have exciting news that we are currently installing a Changing Places space. Over a 1/4 million people in the UK need Changing Places Toilets to enable them to get out and about and enjoy the day-to-day activities which many of us take for granted. To use a toilet in safety and comfort, these people need to be able to access a CPT, which has more space and the right equipment, including a height adjustable changing bench, a peninsular toilet and a ceiling hoist. We're delighted that with external funding we've been able to create a safe, welcoming space.

**Exhibition** (included in museum admission)

**February 1st to April 19th - In Your Words**

This celebration of the rich dialect heritage of the Yorkshire Dales includes contemporary recordings and oral history from the university collections gathered by fieldworkers from Leeds University in the 1950s and 60s, a time of huge change in the Yorkshire Dales.

We will be featuring original material from Leeds Special collections when the exhibition reopens in February, together with word maps created from the words gathered across England. You can also add your own words to the collection by filling in a survey in the exhibition or by going online when you get home <https://dialectandheritage.org.uk/>.



**Podcast** - Our new podcast series created by Andrew Fagg focuses on dialect and local voices. Look out for this on our 'Voices from the Dales' podcast which you can hear via the museum website <https://www.dalescountrysidemuseum.org.uk/explore/explore-the-museum/voices-from-the-dales-podcast/>.

### Family Friendly Fun

Have fun round the galleries and come along to our February half term holiday events. There will be Dark Skies crafts in the Creation Station, so why not pick up an Annual pass so you can pop in as many times as you like, all year round? Or your child can join the Scurry Club and start collecting their squirrel badge and first stamp as soon as they visit. Each Scurry Club pass allows entry for the named child and an adult carer. We've put together lots of family fun events for 2023, so keep an eye on our website! [www.dalescountrysidemuseum.org.uk](http://www.dalescountrysidemuseum.org.uk) and Facebook page.

### Wild Escape – Wonderfully Wild Dales

Yorkshire Dales National Park is home to nationally and internationally important landscapes, habitat and wildlife including red squirrels, peregrine falcons and lady's-slipper orchids. More than 120 species are national priorities for conservation action. 17 priority habitats include species-rich hay meadows, grasslands on thin limestone soils, upland ash and oak woodlands and fell top blanket bog and heathland.

We're taking part in the Wild Escape with our Wonderfully Wild Dales project, working with Stage1Cycles Wensleydale Bike Club, Hawes Primary school and Mowbray school. Through family and class activities we'll share the special areas and species, explain the impact of climate change and show what small steps can be taken to help reduce a family's carbon footprint and help safeguard these special aspects of the Yorkshire Dales for future generations.

The Great Escape is made possible by lead support from Arts Council England's National Lottery Project Grants, with additional support from Art Fund.

### Learning

If you work in education and would be keen to chat with us about our workshops, loan boxes or other resources to complement your lessons, just get in touch by emailing

[dcm@yorkshiredales.org.uk](mailto:dcm@yorkshiredales.org.uk). The YDNPA Learning and Engagement team are also running sessions online and in person, so watch out for these.

### Yorkshire Dales Young Archaeologists' Club

At our first meeting of the year we looked at textiles and everyone got the chance to make their own felt! The club meets once a month on a Saturday morning, **10.00am to noon** and our next session will be on **February 25th**. If you know a young person age 8-16 years who might be interested, please let them know about the club. They're welcome to come along to try a session. Please call in advance if you'd like to join in or email [dcm@yorkshiredales.org.uk](mailto:dcm@yorkshiredales.org.uk) or call **01969 666210**.

### What's on in February

Events are included in Museum admission unless otherwise stated

**Dark Skies Festival** - Planets needle felting workshop.

### Sunday, February 12th 10.00am – 3.00pm

Make your own set of 9 fabulous, artistic felt planets (Sun, Jupiter, Saturn, Uranus, Neptune, Venus, Earth, Mercury and Mars) to be hung individually or strung along as a garland. You will learn how to use felting needles to sculpt wool, create different size baubles to represent the planets of the solar system and practice basic techniques of manipulating and blending wool to decorate your planets.

Elli, an experienced textile artist, will guide you and demonstrate every step of the project. The workshop is suitable for both beginners and those with some experience.

All materials will be provided to complete the project. Please bring your own twigs if you like to create a mobile solar system.

£53 - Lunch included and booking essential

**Wonderfully Wild Dales** - Create your own nocturnal creature.

### Tuesday, February 14th, 10.30am - 4.00pm.

Discover which creatures come out and about at night in the Yorkshire Dales and create your own



## News from the DCM (continued)

nocturnal creature made from recycled materials to take home.

A Wild Escape family activity made possible by support from Arts Council England's National Lottery Project Grants, with additional support from Art Fund.

Booking advised

### Bike ride and pizza planet making

**Wednesday, February 15th 3.00pm – 5.00pm**

Payment and booking essential via Stage1Cycles

### Dark Skies Festival - Experience the Night Sky

**Thursday, February 16th 6.30pm – 9.30pm**  
SOLD OUT

**Dark Skies Festival** - Beginners guide to the night sky and rocket making

**Friday, February 17th 10.00am to noon**

Take a journey through the Cosmos with stargazing expert Richard Darn. From spotting ancient constellations to finding galaxies, this is a fun, practical session to take your astro knowledge on to a new level! You will even get the chance to handle space rocks over four billion years old! If the sun is out we'll even have a go at safe solar observing. With a chance to make and launch your own rocket and 10% off a Dark Skies themed menu at the Firebox cafe, this is great for kids over 6 and adults!

**Pendragon Castle** - its history and rescue

**Friday, February 17th 7.30pm – 9.00pm**

Friends of the Dales Countryside Museum evening lecture. John Bucknell talks on the history and rescue of Pendragon Castle.

Free for members or donation for non-members – booking advised

**Dark Skies Festival** - Solar system painting wool workshop

**Saturday, February 18th 1.00pm – 4.00pm.**

Create a gorgeous 3D picture of the solar system using wool fibres. A workshop suitable for all abilities with clear step by step instructions and demonstrations. You will cover a range of needle felting techniques and use wool fibres as a painting medium. You will

learn how to manipulate, layering and blending different natural and dyed wool fibres to create a 3D picture of the Planets and add finishing touches.

Recommendations on how to frame your picture will be given at the end of the workshop.

£35 - Booking essential.

## FOR ALL YOUR SEWING NEEDS

Contact: Sheila Kearton at  
Woodhall, Askrigg

Alterations and custom soft furnishings  
CURTAINS, ROMAN  
BLINDS, CUSHIONS  
DRESSMAKING AND  
REPAIRS



Tel **01969 663484** or **07800 576925**

An advertisement for H&amp;M Craftsmen. The top part features the logo 'H &amp; M CRAFTSMEN' in green and black, with the text 'KITCHENS | BEDROOMS | STUDIES' below it. The middle part is a photograph of a modern kitchen with white cabinets, a wooden island, and a large window. The bottom part contains contact information: 'Showroom open to browse Mon-Fri 9am-5pm; Sat 10am-1pm', 'Industrial Estate | Ingleton | LA6 3NU', '015242 41535', and 'kitchensandbedrooms.co.uk'.

An advertisement for Reflex Orthopaedic Massage. The top part features the logo 'REFLEX orthopaedic massage' in blue and black. The middle part contains the text 'Orthopaedic Massage' in a large, bold font. Below that is the text 'Back &amp; neck pain, strains &amp; sprains' and 'Nerve injuries, sciatica, chronic pain'. The bottom part contains the text 'Robust Covid-Secure procedures in place', 'Clinic in Hawes', '07975 999373', and 'Find me on Facebook www.reflex-om.com'.



## A New Year and A New Start

The ladies of Bainbridge WI marked the end of their 90th anniversary year with a Christmas Lunch at The Garden Rooms at Tennants which was enjoyed by all. After a delicious lunch, we were entertained by Eleanor's song, verse and dialect 'ditties' which brought smiles to our faces.

As we now launch into 2023, our new committee have met to plan an exciting calendar of meetings, events, activities and outings for our members. It's going to be another busy year!

Our monthly meetings resumed in January, on the third Thursday of the month at Bainbridge Village Hall, starting at **7.30pm**. January's meeting was interesting with a make-up demonstration and hair and beauty tips from Becci Norwood of Salon Boutique in Leyburn. We watched intently as one of our members was transformed with a very simple make-up routine that we should all be able to copy!

Our Walking Group has continued to meet throughout the winter months, despite the best efforts of the weather to thwart their plans! They are a determined lot and clearly keen on the exercise (although it does seem there is always some form of refreshment involved!). January saw them walking from Thornton Rust and they are now busy planning their venture for February. Meanwhile, the Book Group is still busy reading - an ideal time of year for them with the long evenings to be filled. Lunch Club resumed with a visit to the Kings Arms in Askrigg and the Garden Club is meeting indoors to make plans for the coming season.

The Soup and Sweet lunches resumed in January and will be held monthly on the Monday following our monthly meeting. Look out for posters with the dates and venues on and come along to join us for a delicious homemade soup and sweet lunch. Everyone is welcome!

We are always keen to expand our membership and welcome new faces to our merry throng. If you are interested, please come along to a monthly meeting as a guest to see if you like it. We are a very friendly bunch and have a busy calendar of things that you can choose to join in with, or not, depending on your interests and abilities. It is a great way to make friends and also learn new things. We don't take ourselves too seriously but we are keen to have fun and to offer friendship! Come along and meet us!

Further information can be obtained by calling our President, **Nicola Robinson** on **01969 650801**.



**A personal friendly service for  
'all creatures great and small'**

- Small animal consultations, diagnostics, and surgery
- Budget friendly preventative health care plans for dogs, cats, and horses
- Farm Animal routine work
- Ambulatory equine services
- In-house 24-hour emergency service for small animal, farm, and equine

**01969 422201**

**[www.wensleydale-vets.com](http://www.wensleydale-vets.com)  
[info@wensleydale-vets.com](mailto:info@wensleydale-vets.com)**

## **MICHAEL MOORE & SON BUILDER AND PLASTERER** Family Business Est 1906

Alterations, pointing, stonework,  
Roof work, garden patios, paths,  
plastering, insulated plaster  
boarding,  
Over-skimming Artex walls and  
ceilings, tiling walls and floors,  
underfloor heating, PVC sash  
windows.

**NO VAT TO PAY**

**Tel: 01969 667045**  
**Mob: 07968 684942**  
**Hawes DL8 3NS**

## **Mike Addison Optician**

Market Street, Kirkby Stephen,

**017683 71555**

Email : [infoks@mikeaddisonoptician.com](mailto:infoks@mikeaddisonoptician.com)

- Providing eye care for all the family
  - Private & NHS patients welcome
  - Children & over 60's receive free eye examinations
  - Supplier of all spectacle & vision related products
- or The Shire Hall, Appleby, 017683 53199



Mike Addison FRBO C.  
**OPTICIAN**

## Rainfall Figures for last six months of 2022 (in mm)

	July	Aug	Sept	Oct	Nov	Dec	Total for first six months	Total for 2022
<b>Hawes</b>	85	69	80	161	163	169	653	1380
<b>Breconbar</b>	70	56	97	174	138	152	510	1197
<b>Thornton Rust</b>	73	44	90	180	154	163	502	1206
<b>West Burton</b>	62	47	83	168	171	123	488	1142
<b>Carperby</b>	62	35	92	147	149	130	427	1042

### What was the weather like in 2022?

Set out below is a summary of the weather during the last year at Thorney Mire, west of Hawes.

The beginning of January was changeable with periods of rain. Snow fell at times when cold winds from the Arctic, with frequent showers, spread south behind depressions. Towards the middle of the month high pressure began to dominate. It was rather cloudy at times but cold with overnight frosts under clear skies.

**Max. January Temp. 11.4°C on 1st. Min. Temp. -3.9°C on 9th.**

A strong westerly jet stream developed at the beginning of February with frequent depressions bringing changeable and sometimes stormy weather with heavy rain and strong winds, although it was quite mild. Between the depressions there were a few colder intervals with overnight frosts. The last few days of the month saw a return to much colder weather with snow showers.

**Max. February Temp. 10.2°C on 17th. Min. Temp. -0.3°C on 27th.**

March began cold and wet but the jet stream which caused the changeable weather in February was losing energy and easterly winds brought cold dry conditions. It was rather cloudy but there were some sunny intervals and overnight frosts. The wind veered north east bringing snow showers later in the month but as the sun was becoming stronger, daytime temperatures recovered.

**Max. March Temp. 14.1°C on 26th. Min. Temp. -3.7°C on 7th.**

Snow showers and unseasonably low temperatures with moderate overnight frosts heralded the start of April. Although it remained cold at night, daytime temperatures recovered towards the middle of the month and it became generally warm and dry with only a few showers. Cooler weather returned from the 20th with variable amounts of cloud and sunny periods and further frosts on some nights.

**Max. April Temp. 17.8°C on 16th. Min. Temp. -3.5°C on 10th.**

Early May remained cool but more changeable with light rain at times. By the middle of the month temperatures rose to near or a little above normal. It was rather cloudy and mainly dry with only occasional light rain. The month ended dry and mostly sunny.

**Max. May Temp. 18.6°C on 17th. Min. Temp. 7.8°C on 15th.**

June began changeable with temperatures below average. However, by the 10th temperatures began to recover and it became drier but rather cloudy with a persistent westerly breeze. Towards the end of the month it became quite warm with temperatures over 20°C on many days and it was dry, although there were some showers. A thunderstorm overnight on the 29th brought some heavy rain and cooler weather.

**Max. June Temp. 23.0°C on 24th. Min. Temp. 5.6°C on 2nd**

July will go down in people's memories for the extreme heat and record breaking temperatures, but it began here rather cool with

showers. Temperatures began to rise steadily from the 5th and it became dry and warm although cloudy at times. The wind direction changed from the west to the south by the 18th drawing in a plume of hot air from southern France and Spain which caused the temperature, in some parts of the country, to rise to record levels of over 40°C by the 19th. A change in the wind direction to a north westerly brought an end to this remarkable hot spell and it became unsettled with rain towards the end of the month and into August.

**Max. July Temp. 31.1°C on 19th\*. Min. Temp. 8.8°C on 16th. \* Note that this is the highest temperature I have recorded at Thorney Mire in twenty six years.**

August, was a rather mixed month with cool, wet spells but also dry sunny periods which, fortunately, seemed to predominate, as the middle of the month was very warm with temperatures exceeding 25°C on four consecutive days.

**Max. August Temp. 26.6°C on 12th. Min. Temp. 8.3°C on 6th.**

September was mainly dry. The first week was warm with sunny periods. This warm spell ended with thunderstorms before it turned cooler but still quite sunny with only short unsettled spells. As the nights were getting longer, temperatures fell sharply under clear skies. There was a further fall in temperature towards the end of the month with rain at times.

**Max. September Temp. 18.5°C on 12th. Min. Temp. 3.9°C on 17th.**

The unsettled autumnal weather continued into October with periods of rain and strong winds. The middle of the month was drier with sunny days and cold nights with a slight ground frost on the 13th. There was a return to wet and windy weather with gales by the end of the month.

**Max. October Temp. 15.0°C on 27th. Min. Temp. 3.1°C on 13th.**

This very changeable weather continued well into November. There was a dry cold spell by the middle of the month with fog at times in the mornings. This was followed by more wet weather before it became cold and drier in the last few days of the month.


**Max. November Temp. 14.4°C on 12th. Min. Temp. 1.4°C on 29th.**

December began dry, cool and cloudy with some sunny spells. By the end of the first week a stream of very cold arctic air plunged southwards across the country and it turned bitterly cold with daytime temperatures hardly above freezing and hard frosts at night. The cold spell came to a dramatic end on the 17th with heavy overnight snow giving a cover of over 30cm. This caused power cuts in Wensleydale and Swaledale with treacherous road conditions. A rapid thaw set in on the 19th, which along with heavy overnight rain caused further problems with flooding.

After a spell of drier weather over the Christmas holidays, an intensified jet stream sent a constant stream of depressions across the country with spell of heavy rain and flooding which continued into 2023. Happy New Year.

**Max. December Temp. 11.0°C on 20th. Min. Temp. - 6.5°C on 14th.**

John Turner



## EDGLEY GARAGE

Edgley Garage, Aysgarth,  
Leyburn, North Yorkshire,  
DL8 3AD  
01969 663094  
[edgleygarage@yahoo.com](mailto:edgleygarage@yahoo.com)  
MOT testing; Full servicing;  
Air conditioning service;  
Brakes, clutches and all  
general repairs to vehicles.

## Bainbridge Vets Ltd

A comprehensive, friendly veterinary  
service treating animals large and small  
24 hour emergency service.  
**Open Surgery**  
Monday-Friday 9.00-9.30am and 2.00- 2.30pm  
Saturday morning 9.00-9.30am  
(appointments available at other times)  
**01969 650263**

## Prunings

Welcome to 2023. A new year, new hopes, new dreams, - all the best to everyone and may it be happier and more peaceful than the last.

Sarah Raven was off the mark with incredible agility in the first few days of January: new catalogues, special offers, - the whole nine yards. I shall of course be tempted, but I shall be much more circumspect this time around. Last year the sweet peas arrived when we had a couple of inches of snow, - not the most convenient delivery.

It seems no time at all since my non-stop begonias were lush and glowing red. They collapsed pretty quickly when a hard frost descended but now the green spikes of the early irises are poking through in the tubs - amazing. I used to fill the gap with pansies and let the irises grow through them, but it hardly seems worth the effort. It feels as if there are more important things to do.

The cotoneasters that I see in front gardens driving through the villages are mostly still laden with luscious red berries, a veritable feast. The one that I have growing by the kitchen window was covered but now is completely stripped. We must have some very hungry blackbirds around here, although I very seldom see them feeding.

I went round this morning to make sure that none of the pots had been left standing in saucers of water. Last year 4 pots of agapanthus survived the winter with no extra help. If I want that to happen again I shall have to ensure that they can at least drain when it isn't pouring down. I'll just have to hide the various saucers in a corner and hope they don't get blown away.

I have always loved rhododendrons and azaleas, but what I had not realized is that while

all azaleas are rhododendrons, not all rhododendrons are azaleas. (See Garden News). Being in limestone country the few that I have are growing in pots and they do pretty well. There are some interesting varieties and I am keen to have some with more scent. It seems that anything with "Loderi" in its name will be scented, most of the deciduous azaleas are scented and "Jolie Madame" also has spectacular autumn colour. Those named "Starstyle" are all unusual flowered types which were finalists in the RHS Chelsea Plant of the Year Competition, they have a second flush of flowers and are said to do well in pots. They are also pretty low maintenance, which suits me.

Looking at some of the perennials in pots with their stately seed heads, I realise now that they should have had bulbs in the bottom. Cutting back now would have given the bulbs ample room to emerge and thrive. Must remember next autumn to do something about that. There is going to be a very long list which I will paste into the front (!!!) of my new diary.

Whatever you grow, take time to enjoy it!

**Rose Rambler**

## The Iron Maiden

*Not enough hours in the day?  
Fed up of never ending ironing?*

My ironing service is definitely a way of buying back much needed quality time in a busy life!

**Tracy Hume**

**07527 796523 or 01969 666048.**

Can arrange collection/delivery

## J. W. COCKETT & SON

**Family Butchers**

Estd. 1854

**Wholesale & Retail Bakers**

**Main Street, Hawes**

**Tel 01969 667251**

**Best Quality Meats**

**High Class Baking**

**Freezer Orders Supplied**

travel counsellors ⇌

Hi I'm Dinah

*Your local Travel Counsellor based in Wensleydale*

*I offer a personal, bespoke travel service, From city breaks to cruises, luxury beach holidays to staycations - taking care of everything from start to finish.*

*Following the Covid-19 pandemic, it's has never been more important to book with your local travel agent*



**Tel. 01969 678060**

*dinah@travelcounsellors.com*



## Swaledale Festival

We are delighted to share the news that the full 2023 programme is now on our website.

The line-up includes jazz from the award-winning vocalist Claire Martin OBE, comedy from the hilarious Andy Hamilton, creative walks with Dales poet Mary-Jane Holmes, the Reeth Lecture by Antiques Roadshow expert Ronnie Archer-Morgan, a fascinating talk on the Northern Dales night skies, ‘chamber-folk’ from the vibrant Welsh group VRi, the superb Manchester Baroque, star cellist Natalie Clein, chart-topping guitarist Craig Ogden and Fourum’s last ever performance.

We are also excited to announce two exceptional family events - magical puppetry from the world-renowned Lempen Puppet Theatre and a special screening of Wallace and Gromit: The Wrong Trousers with live music from one of the most successful competition brass bands in history – WFEL Fairey Band.



There are lots of other treats in the programme. Have a browse and be poised to book your tickets when public booking opens on **Monday, March 13th!**

Remember, you can subscribe to our Festival Friends’ scheme and benefit from a two-week priority booking period starting on **Monday, February 27th**. To take out or renew your Friends membership, please visit [www.swalefest.org/Support/Friends](http://www.swalefest.org/Support/Friends), or ring our office on **01748 880018** for help or enquiries.

Brochures will be posted out in early February. If you aren’t on our mailing list, you can pick one up at Hudson House in Reeth, or email [enquiries@swalefest.org](mailto:enquiries@swalefest.org) and we will post one to you.

Volunteer Briefing - On **Wednesday, February 15th** we will be holding our annual Volunteer Briefing from **2.30pm to 4.00pm** at Reeth Memorial Hall.

The Festival relies on a dedicated team of volunteers who give their time generously and with great enthusiasm. Roles include stewards, hosts and drivers, and we particularly need ‘village reps’ to help us distribute and replenish brochures in the lead-up to the Festival, display posters and generally spread the word.

Volunteering is a great way to be part of an exciting cultural event. Come along to the briefing to meet our friendly Volunteers Coordinator and register your interest. For further information, please email [volunteers@swalefest.org](mailto:volunteers@swalefest.org).

Swaledale Festival AGM, **Thursday, February 16th at 5.00pm**, via Zoom. All are welcome. If you’d like to attend please email the Festival’s Chairman Dr Susan Miller for further details at [chairman@swalefest.org](mailto:chairman@swalefest.org).

**March 13th** – public booking opens.

**Saturday, May 27th** – Swaledale Festival runs for a fabulous fortnight!



### Mill Race Teashop

Family run Teashop situated next to the magnificent Aysgarth Falls

Light Lunches ~ Soup & Sandwiches ~ Afternoon Teas

Cakes, Scones, Biscuits & Traybakes

Muddy Boots & Dogs Welcome ~ Card Payments Accepted

01969 663446



## Hawes Countrystore



“For All The Farmers Needs”

**Not Just All Your Agricultural Supplies!**

**Country clothing, work ware & footwear.**

**Pet, equine, poultry, wild bird feed,  
garden supplies and household goods!**

**Call in & see for yourself!**

**Tel– 01969 667 334 Fax– 01969 667 335**

**Monday – Friday 8am – 5pm Saturday 9am - Noon**

CBAL Fuels- 01524 599 333  
Head Office (Carlisle)- 01228 552 650

Hawes @carrs-billington.com  
[www.carrs-billington.com](http://www.carrs-billington.com) Follow us






## Yorebridge Sport and Leisure Centre

The Wensleydale Centre, Askrigg.  
Tel. 01969 650060

Soft Play - We now have a dedicated room which is available for hire - £5 per family for 2 hours or why not try our Friday session? **1.00pm - 3.00pm** drop in, for social active play with your babies and pre-school child. Session supported by North Yorkshire County Council, Get Going Grant. Book and pay online.

Booking can be made via our website [www.yorebridgesportandleisure.co.uk](http://www.yorebridgesportandleisure.co.uk) or email [admin@yorebridge-sport.co.uk](mailto:admin@yorebridge-sport.co.uk) or telephone **01969 650060**.

Fitness classes - via zoom or live class as indicated:

Fit for Life - **Mondays (zoom) 9.15am - 10.15am**. Building and Maintaining Strength to live life your way.

Bootcamp - **Tuesdays and Thursdays (live) 6.00am - 7.00am**. High Intensity exercise to build strength and give a good workout to counteract a more sedentary lifestyle or work role and to support your active lifestyle.

Wishful Shrinking - **Tuesdays (live) 7.00pm**. Exercise with gym equipment (cost £5).

Walking Circuit - **Wednesdays (zoom) 9.15am - 10.15am**. Exercises to keep active people, active.

Move and Tone - **Wednesdays (live) 7.00pm - 8.00pm**. Aerobics session to music followed by core strength exercises for toning. (cost £5).

Strong and Able - **Fridays (live) 11.00am**. Maintain your ability to get out and enjoy life, build muscle tone, stability around movement and keep flexible and mobile around joints. Standing and chair based exercise.

Run Club - **Fridays (live, 2 sessions)** Cost £3.

1) **6.00pm - 7.00pm**. Running drills and strength for runners.

2) **6.00pm - 8.00pm**. A longer run 6-10 miles.

Costs for fitness classes are £7 per session except where stated otherwise.

Conversational French - **Tuesdays, 9.30am - 10.45am (zoom)**. Cost is £5 per session.

Booking is essential for all classes.

Gym facility and membership - Start 2023 as you mean!

Need a flexible gym membership that will allow you to have a great workout to meet your needs? We have a fully equipped gym with a variety of kit to meet everyone's workout needs.

There are a number of different gym membership packages including 6 month memberships; monthly pay as you go; couples, student and junior memberships as well as guest day passes. One to one training sessions are also available.

For more information on any of the above, please contact us on **01969 650060**; email: [admin@yorebridge-sport.co.uk](mailto:admin@yorebridge-sport.co.uk); website: [www.yorebridgesportandleisure.com](http://www.yorebridgesportandleisure.com).

	Sycamore Country Store	Now Open Inside Sycamore Hall, Bainbridge
---	------------------------	--

**OPENING HOURS:**  
MONDAY TO FRIDAY. 9.00 am to 1.00 pm

Selling a wide range of everyday essentials, including dairy products, fruit & veg, bread, cakes & savouries, sandwiches and sweets

**D MOORE & M BLACKHURST**  
BUILDERS GENERAL MAINTENANCE



All types of building work undertaken  
25 years' experience ~ Free Estimates

**07772 284602 ~ 07975 897715**  
3 Woodburn, Hawes. 01969 667505

**JB TV AERIAL & SATELLITE SERVICES**



John Banks  
Proprietor

Telephone: 07891 944175  
Email: [johnbankshawes@gmail.com](mailto:johnbankshawes@gmail.com)





## Heavens Above

We've a trio of bright planets on view this month – Venus, Jupiter and Mars. Venus is easy to spot, shining like a beacon low in the south-west just after sunset. It climbs steadily higher in the sky throughout the month as it heads towards a meet-up with Jupiter, our second bright planet, in early March.

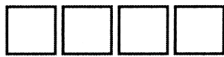
Brighter than any of the stars, Jupiter sits low in the west in the constellation of Pisces. Unlike Venus it's heading downwards in the sky and disappears altogether by the end of March.

Before its close encounter with Jupiter, Venus passes near to the faint outermost planet, Neptune, on **February 15th**. Good binoculars will show you the pair in the same field of view with Neptune lying slightly to the lower right of Venus. It's about 60,000 times dimmer than Venus so it might be quite hard to pick out. Best time to look is around **7.00pm**.

Just over a week later, on the evening of **February 23rd** again around **7.00pm**, you'll find the crescent Moon lying midway between Venus and Jupiter - a beautiful sight in the gathering darkness.

The third of our planets, Mars, has faded quite a bit since its close approach last December. It lies high in the south around **9.00pm** just to the left of the Pleiades star cluster in the constellation of Taurus the Bull. It's not much brighter now than Aldebaran, Taurus' principal star and fades rapidly during the next few months as we pull away from it.

## PENNINE PRINT



Full Colour Print  
Invites - Tickets  
Brochures - Leaflets  
Menus  
*all at affordable Prices*  
**simon@pennineprint.co.uk**  
Tel: 07860 620 411

This month is your last chance to get a good early evening view of Orion and his entourage of bright constellations. They'll soon fade away into the western twilight, so catch them while you can. Sirius the Dog Star, due south around **9.00pm**, is particularly striking. It's at its highest for the year and flashes all the colours of the rainbow in the frosty air.

This year's Dark Skies Festival, organised by the Yorkshire Dales and North York Moors National Parks, runs from **February 10th until February 26th**. There are loads of star gazing events on offer so if you'd like to get involved, you'll find full details on the YDNP's website.

Have clear skies!

**Al Birio**



Nestled in the heart of Wensleydale, Yorebridge House offers a combination of luxury services including overnight stays in our beautiful hot tub rooms or house rooms, fine dining in our 3 rosette restaurant, light bites, afternoon teas, weddings and private functions. With a welcoming roaring fire and beautiful views across the dales, you can sit back and relax the moment you step through our doors.

We are open seven days a week  
Light bites served between 12noon - 3pm  
Dinner is served between 6.30pm - 8.30pm  
Sunday lunch available 12noon - 2pm

Please contact us using the details below to make a reservation.

[www.yorebridgehouse.co.uk](http://www.yorebridgehouse.co.uk)  
[enquiries@yorebridgehouse.co.uk](mailto:enquiries@yorebridgehouse.co.uk)  
01969 652060

## Solid Joinery Solutions

All aspects of joinery and carpentry undertaken.  
Bespoke joinery solutions made to your requirements.  
Covering all Yorkshire Dales and surrounding areas  
Contact Paul for a free, no obligation quote on **07980 167987**  
Email: [enquiries@solidjoinerysolutions.co.uk](mailto:enquiries@solidjoinerysolutions.co.uk)  
Web: [www.solidjoinerysolutions.co.uk](http://www.solidjoinerysolutions.co.uk)



## An Exciting Start to the Year at Sycamore Hall

Well, we hope you all enjoyed a good time over the Christmas period. We certainly had a busy time in the run up to the 'big day' with a very full programme of events taking place. We had fun and games at our Christmas Party and enjoyed a delicious Christmas Lunch, prepared by Chris and served by staff. The new decorations looked great and it was lovely to welcome visitors in to celebrate with us. We all particularly enjoyed the performance by the children from the BAWB schools who came to entertain us with Christmas carols.

Now that 2023 has started we are looking forward to exciting changes at Sycamore Hall. The refurbishment programme has begun and although there is some way to go yet, it will hopefully be completed by the late spring/early summer when we will be able to re-launch the amazing facilities on offer here. Meanwhile, there is some disruption, but everyone is being very tolerant and the contractors are doing their best to keep the mess to a minimum.

We are thrilled to have a great new shop which opened after the New Year, selling everyday essentials, and we hope you will come along to support it, ensuring that we are able to retain a much-needed shop on site.

So, we are now settling down to our regular weekly activities, including the 'Knit and Natter' (**Mondays, 2.00pm**), Quiz or Bingo (**Tuesdays 10.45am**), Coffee Morning (**Thursdays, 10.30am**) and Gentle Exercise (**Fridays, 11.00am**). We also have a new event taking place on the **second Wednesday of each month**, between **10.30am and 12.30pm**, called the 'Wellbeing Cafe'. This event is run by the 'Carers Plus' organisation in association with Dementia Forward and Housing 21. Information, advice and training is available along with the chance to meet up with others. The events are inclusive for all and are dementia friendly. Everyone is very welcome to come

### Sykes House in Askrigg Grocery Shop, Tea Room and B&B

Shop Open 7 days a week  
Tearoom open Tuesday-Sunday, .  
Enquire for group bookings  
B&B bookings at  
[www.sykeshouse.co.uk](http://www.sykeshouse.co.uk)  
**01969 650535**

along, (not just Sycamore Hall residents) and enjoy a cuppa and cake whilst meeting others and enjoying a chat. The ladies from 'Carers Plus' will be on hand during the events to talk to anyone who has any questions or concerns about facilities and services available, claiming benefits etc. Do come along and join us for these relaxed events. If you would like to come along as a volunteer to assist with the refreshments that would be very much appreciated too!

Another key feature of these events is the opportunity to provide two hours of respite for those who care for a relative at home. This must be booked in advance via **Nicky Cooper (Tel: 0370-192-4055)** but we will be able to offer companionship and activities to the person you care for whilst you enjoy some time to yourself. Please do get in touch to discuss this and book a place.

We are also developing our links with the children from the BAWB Federation of Schools who are going to be coming along to join us on a regular basis to share activities and learning opportunities with our residents. We are very excited about this opportunity which has proven benefits to both the young and the old. Watch out for news on how this is going in our future reports.

Another facility we are promoting is the use of our facilities for members of the local community. You can make use of our assisted bathing facilities to ensure that you or a family member can still access a soak in the bath despite limited mobility or health issues. Further details are available from Nicky Cooper

Don't forget that alongside the new shop, we have a library on site, the hair salon and Mabel and Maisy's Mini Emporium, the restaurant serving lunch daily and the Post Office (**Monday and Wednesday, 9.00am to 1.00pm**). Do come along to make use of these facilities and support our local businesses.

We are excited to be developing our facilities and our links with the local community and hope that you will come along and support us in ensuring that Sycamore Hall is at the heart of our communities. Hopefully by the time you read our next report, we will be enjoying some lovely spring weather and the gardens will be coming back to life. In the meantime, let's hope winter is kind to us!

We hope to see you soon!

## The Penhill Benefice Quilt

The Penhill Benefice Quilt has been created by ladies from across the Penhill Benefice in an effort to raise funds for The Farming Community Network and the Benefice.

The quilt is now being raffled through Tennant's Auctioneers in Leyburn. Tickets cost £1 each or £5 per book and are now on sale. Tickets are also be available through members of the local Parish Churches and are available in Redmire from **Denise Houghton** - [dhoughton@outlook.com](mailto:dhoughton@outlook.com), 07800 658083.

The raffle will be drawn on **Easter Sunday, April 1st** at Aysgarth Church.



## Dales Dance

**Ballet for boys and girls  
From the age of 3 years**

**Modern Dance/Jazz  
For children and teenagers  
Tap for children and adults**

**For more information please contact:**

**Hannah M. Smith RAD RTS AISTD  
07794 009857 or  
hannah.dalesdance@gmail.com**

**www.dalesdance.com  
Askrigg, Aysgarth, Hawes &  
Leyburn**

## Aysgarth Garage Shop and Post Office. Tel 663900

Our store offers a wide range of goods fresh, frozen, household, auto accessories, tools, pet food, stationery and newspapers. We have fresh bread, sandwiches, pasties, fruit and vegetables, milk and dairy including some specialist cheeses and an excellent selection of beer, wine and soft drinks, snacks and confectionery.

**Shop hours are 07.30-18.00 Mon-Sunday**  
In September 2022, we opened a Post Office at Aysgarth Garage which is integrated into the retail area and offers customers a wide range of Post Office services from posting letters and parcels to collecting and returning online items. It also offers banking services including cash withdrawal, deposits and bill payments.  
**Post Office hours are 09.00-13.00 Mon-Sat.**



**TIMBER BUILDINGS**

Swan Farm, Redmire,  
Leyburn DL8 4HA  
**01969 625647**  
castletimberbuildings@mail.com  
castletimberbuildings.com

All of our products are hand made to order, from the smallest of sheds to the more elaborate designed summer houses. Our team of experienced joiners and specialists are on hand to advise and guide you, to help get the most of your product.

We aim to deliver the highest quality buildings, tailor-made to your requirements using only the finest quality timber and ethically sourced. You can be reassured that we also care for the environment.

## THE HEALING COLLECTIVE

Encouraging health and well being  
with a range of therapies.

*Therapies for animals also available.*

Coach House, Berry's Farm Shop & Café,  
Swinithwaite, DL8 4UH. t.0845 474 2383

[info@healingcollective.co.uk](mailto:info@healingcollective.co.uk)  
[www.healingcollective.co.uk](http://www.healingcollective.co.uk)



## DENTURE PROBLEMS?



Denture Studio

**Are you unhappy with the look or fit of your existing dentures?**

**WE CAN HELP**

Our in-house Clinical Dental Technician Mark can provide quality bespoke dentures designed to your individual needs



To Book  
**FREE**  
Consultation CALL  
**01677 422968**

Website: [www.orcharddentallab.co.uk](http://www.orcharddentallab.co.uk)  
Email: [info@orcharddentallab.co.uk](mailto:info@orcharddentallab.co.uk)  
1 The Villas, Bridge Street, Bedale, DL8 2AB



# Home Run

Pet sitting, House sitting, Dog walking

I offer a friendly, personalised pet and house sitting service in Wensleydale and further afield.

Nicola – 07866 336924  
[nicola@homerundogsitting.co.uk](mailto:nicola@homerundogsitting.co.uk)  
[www.homerundogsitting.co.uk](http://www.homerundogsitting.co.uk)



- City & Guilds qualified
- Fully insured ● Certificates issued
- Prompt professional service
- Bird guards and cowls fitted
- NO MESS - NO FUSS!

Martin Tradewell  
QUALIFIED CHIMNEY SWEEP

**01969 640099**

Glenside, Horsehouse, Leyburn. DL8 4TS  
Email: [martin@daleschimneysweep.co.uk](mailto:martin@daleschimneysweep.co.uk)



## Blueboxt - February Update

Musical Cultures - Free workshops and concerts

Our team of young people have planned three more amazing world music workshops taking place in February and March. Sessions are FREE to attend for ages 11-19 years - We are happy to consider other ages too, please get in touch. Instruments are provided and everyone is welcome to come and take part and find out about different musical cultures and styles and have fun making-music together. PLEASE register your place as we only have a limited number of spaces available. All three workshops take place at Thoraby Village Hall.

Reggae Grooves with Michael Yare. **Sunday, February 12th, 10.00am - 5.00pm.**

Caribbean Steel Drums with Nicole Coker. **Sunday, February 26th, 10.00am - 5.00pm.**

Bhangra Dance and Drums with Hardeep Sahota. **Sunday, March 12th, 10.00am - 5.00pm.**

Each workshop will finish with an informal sharing performance at **4.30pm**, when our guest music leaders and participants will present what they have created during the day. All welcome, pay as you feel donations appreciated. Refreshments will also be available.

Thinking of a career in music? Interested in how to produce and release your own music or artwork? Wondering what other 'offstage' opportunities exist in the Creative Industries? We are delighted to have teamed up with David Owen from Flash Company Arts. There are six FREE sessions taking place on Zoom and in-person which will cover industry insights, song writing, productions skills, distribution and promotion, health and wellbeing, touring and performing, as well as exploring the many supporting roles which help artists create amazing events and releases. Register your interest today!

Want to play in a band? Our regular Play|Record|Perform sessions take place on **Fridays, 6.30pm - 9.30pm** and **Sundays, 2.00pm - 5.00pm**. Contact us to find out more.

To book your FREE place or find out more information contact Colin Bailey on **07711 211169**, email [info@blueboxt.co.uk](mailto:info@blueboxt.co.uk) or book online at [www.blueboxt.co.uk](http://www.blueboxt.co.uk).

## Time and Talents to Offer to the Swaledale Festival?

It's really rewarding being involved with something that is successful and provides pleasure to lots of people. It's even better if it also brings visitors and revenue to the Dales. There are many very worthwhile organisations in the Dales that aim to do all of that - and the Swaledale Festival is one of them. We know that the Festival is popular; our track record of excellent ticket sales bears witness to that. Two weeks of music, arts and walking clearly appeal to locals and visitors from near and far.

We are proud of the accolades that the Festival has won. We've picked up six major national and international awards over the last few years, including the prestigious Queen's Award for Voluntary Service 2018, in recognition of our strong volunteer ethos. We couldn't achieve any of what we do without our loyal bunch of volunteers who contribute so much, so willingly, to help make the Festival successful year after year.

We are looking for additional Board members and would love to hear from you, particularly if you have knowledge, experience and expertise in IT, fund-raising or HR. What would you get out of it? The sense of satisfaction that comes from contributing to a professional and well-run organisation, working with a stimulating bunch of people and having a lot of fun.

To find out more, please contact our Chairman, Sue Miller on 01748 886358 or email [chairman@swalefest.org](mailto:chairman@swalefest.org).

Music Tuition for all ages with  
[www.colinbaileymusic.co.uk](http://www.colinbaileymusic.co.uk)  
07711 211169

Drums & Percussion; Vocals;  
Piano & Keyboards; Music Theory;  
'Get Musical' Workshops.



**M Fothergill**  
**Building Services**  
All aspects of building work undertaken  
667936 /  
07966 624649  
Hawes DL8 3RP

Plastering Alterations Extensions  
Roof work General Maintenance



TOM ADDISON

FINE FURNITURE

Fine quality furniture handcrafted in the heart of  
Wensleydale.

Free standing and fitted furniture designed &  
handmade to your requirements.



All enquiries welcome: 07585952951



[tom@tafinefurniture.co.uk](mailto:tom@tafinefurniture.co.uk) [www.tafinefurniture.co.uk](http://www.tafinefurniture.co.uk)



## Barn Studio Bookkeeping

Bookkeeping | Tax Returns | VAT Returns  
Company and Sole Trader Accounts  
*Friendly service in the Yorkshire Dales*

Terry Newman MICB | 07572 842398  
[barnstudiobookkeeping@gmail.com](mailto:barnstudiobookkeeping@gmail.com)  
Bolton House, West Burton, DL8 4JU

## W.S.HARTLE FAMILY BUTCHER, WEST BURTON

Best Quality Meat, West Burton Lamb,  
Homemade Sausages and Burgers,  
Free Local Delivery and Freezer Orders  
Tel: David on 01969 663302 or visit  
[www.hartlebutchers.co.uk](http://www.hartlebutchers.co.uk)



Yorkshire Dales Accountancy  
Chartered Accountants

## taxation & business advisors

We provide a broad range of accountancy  
and taxation services to our clients.  
Please feel free to contact Martin or Hazel.

E-mail:  
[info@yorkshiredalesaccountancy.co.uk](mailto:info@yorkshiredalesaccountancy.co.uk)

Telephone: 01969 678128

Website:  
[www.yorkshiredalesaccountancy.co.uk](http://www.yorkshiredalesaccountancy.co.uk)

## From the Norah Worth Collection at the DCM

### The Bells of St Margaret's

In her scrapbook of St Margaret's Church, Hawes, for 1986, there is a copy of an article with the intriguing title 'Why Does the Bell Ring Every Day At 8am and 5pm?'.  
The explanation given is that at these times, a priest is obliged to say prayers on behalf, and for the parish.

There are two bells in St Margaret's Church. One is hung for stationary chiming and the other is the clock bell. The present church dates from 1850, but there had been a chapel of ease since the early 17th century. It stood next to the road, opposite the White Hart, but was pulled down when the new church was built. The bell from the old chapel was re-used as the clock bell. It dates from 1822 and weighs 2.5 cwt, measures 21.8 inches and has a tone note of A flat. An inscription on it reads :

ALEXANDER WHALEY  
CHRISTOPHER METCALFE  
Chapel Wardens AD 1822

The clock bell hangs from a wooden headstock between two timbers which are supported at each end by beams built up from the floor. It lies so close to the floor that it can't swing properly.

Norah's scrapbook for 1996 describes the hanging of a new bell. For many years the church only had a carillon of 8 small tubular bells, set up in 1887, but which had been unfit for use for many years. In 1996, the church architect Neil Birdsall managed to locate a single reconditioned bell which was previously hung in a parish near Birmingham.

The inscription on the bell explains that it was originally cast by John Martin of Worcester in 1650 for St Giles Church, Sheldon, where it remained until 1992.

The date is interesting, as this was the time of the Civil War, when many church bells were being smashed as being too frivolous, but Worcester was a Royalist city. It is one of only two bells known to have been cast in England at this time.

The scrapbook contains a series of photos taken for Norah by Geoff Phillips of Appersett. They describe the sequence of processes

involved in hanging the new bell.

A concrete lintel was made to support the beams, and the beams then hoisted up the tower on chains. The bell was made ready and had to be shuffled sideways out of the vestry. It was a tight fit into the clock loft and then carefully taken past the clock and finally into the bell chamber. The old chimes were removed and the bell finally mounted. A rope runs down to the choir vestry on the ground floor.

The bell has a diameter of 38.5 inches and was retuned with a tone note of A flat/G. It was dedicated on Sunday, June 16th 1996 by the Bishop of Knaresborough.

The archive at the DCM houses over 15 of Norah's folders which chronicle the history of St Margaret's Church in Hawes. They contain original copies of parish magazines dating back to 1873, many of which contain references to the birth, marriage and death of many Hawes parishioners.

Val Davis



**Hearing loss shouldn't make  
you feel isolated and anxious,  
we are here to help.**



**For all your  
hearing needs!**

- Hearing test
- Free hearing aid trials
- Ear wax removal
- Tinnitus assessment and therapies
- Hearing aid repairs and servicing

**Hear & Now**  
Independent Hearing & Tinnitus Specialists

**CALL 01765 278 744**

8 Queen Street, Ripon, North Yorkshire HG4 1ED  
info@hearandnowonline.co.uk  
www.hearandnowonline.co.uk



### Watkinson

Congratulations Isabel on your 18th birthday on February 10th. Have a brilliant time. Lots of love and very best wishes for the future. Grandma and Grandad XXXX.

### Georgina Devine

from Sedbergh would like to wish everyone in Hawes a very happy 2023.

### Mary Hugill

would like to thank patients for the cards, gifts and messages received on my retirement from the Central Dales Practice. Will miss you all.

### Thank You

Mary Sumner would like to thank everyone for the lovely cards, flowers and presents she received on her nearly there birthday.

### Charity Art, Craft and Coffee Day

On **Saturday, February 25th** from **10.00am to 3.00pm**, Ben and Hilary Grisewood will be having a fund-raising day for the charity Mary's Meals.

Local artists will be selling a range of their paintings, photography, jewellery, textiles and other craft work in Ben and Hilary's house, which will be turned into a pop-up gallery for the day. We are also selling limited edition prints donated by Winifred Hodge, a former resident of Preston and Redmire. Donations by artists in lieu of commission, and sales of tea, coffee and cakes will all be given to Mary's Meals.

This has been an enjoyable and successful venture in the past and Ben and Hilary are delighted to repeat it. Everyone will be very welcome (and any donations of cakes or preserves will be much appreciated). Their address is: Spindrift, Preston-under-Scar, (first bungalow on the right at the far west end of the village). Telephone **01969 625287**.

Mary's Meals is a charity which supplies food to 2.5 million children in their place of education in 20 countries in the world. For more information, go to [www.marysmeals.org.uk](http://www.marysmeals.org.uk).

### Mystery Picture

Last month's Mystery Picture was the Bridge at Bainbridge.

Where would you find this ball?



### Tuesday Hawes Fish Market

Also door to door delivery every **Friday**. Pre-order or just turn up on a **Friday** at

Askrigg Stone Cross. **9.30am to 10.45am**  
Bainbridge playground. **11.00am to 11.30am**  
West Burton **12noon to 12.30pm**  
Thornton Rust W.I. Hall **12.45pm to 1.00pm**  
Mobile **07711 989590**  
Facebook [Hawesfishmarket](https://www.facebook.com/Hawesfishmarket/);  
Email [Hawesfishmarket@gmail.com](mailto:Hawesfishmarket@gmail.com)

### WENSLEYDALE TREE and HORTICULTURAL SERVICES (Est. 1995) DAVID ALLEN (HND Arboriculture) CHARLIE ALLEN (BSc Arboriculture)

Fully insured (£5million) professional tree work:  
felling, crown thinning etc.

Petrol log splitter and woodchipper for hire.  
Tree stump removal.

Hedge establishment and maintenance.  
Supply/ planting of forest/ ornamental trees.  
Fruit tree maintenance. Weed control services.

[treeshawes@gmail.com](mailto:treeshawes@gmail.com)  
**01969 667364 or 07811 576108**

### R and B CONSTRUCTION



Mr R T Parker

**Building and  
Roofing Contractors**

**Excavator and Operator Hire**

**Extensions to Fine Restorations**

**650151 or 07980 801026**

<https://randbconstructionltd.co.uk>

## Online Bell Ringing

A fun way to learn about this ancient art!

Join a free introductory online course to bell ringing organised by the Two Dales bell ringers, to start in mid-February.



Throughout the country plans are being made to Ring for the King for the Coronation of King Charles III on **May 6th**. Would you like to learn to ring this coronation year?

For hundreds of years church bells have rung out, not only as a call to worship, but also to proclaim special events. They are part of the soundscape of the UK. In June 2022 we celebrated our late Queen's Platinum Jubilee with the sound of bells. Bells rang throughout the nation as a mark of respect at her passing in September 2022.

On **May 6th** we will 'Ring for the King' here in Wensleydale and Swaledale, and we will be delighted to teach you to ring this coronation year.



In 2021 and 2022, the Two Dales ringers put on a course of short interactive on-line presentations on the joy, techniques, and benefits of bell ringing. We also provided hands-on bell training for all participants in a church local to them. Such was the enthusiastic response that the Two Dales have gained 21 additional bell ringers amongst their bell bands.

We are presenting the course for a third time this year, again with hands-on training in local bell towers interspersed with the on-line sessions.

We invite everyone to join us, from those who have simply wondered about how the bells are rung through to those interested in whether bell ringing is for them.

Bell ringing is a team activity that keeps your brain active and your body agile. Some do it for the community of friends, some do it to contribute to Church life, some to keep the glorious sound of bells alive, and some do it for the pure pleasure and feeling of well-being it brings.

In the North East Dales we have over 90 active ringers of different ages, male and female. Some of us attend church but others do not: there is no requirement to be a church-goer.

Bell ringing does not require great strength and we have had children as young as 10 learning in Wensleydale. Many others learn in retirement.

The bell towers participating in this course include those at the churches of Askrigg, Aysgarth, Grinton, East Witton, Masham, Kirkby Malzeard and Sharow. Those living within reach of those churches are particularly welcome to participate in the course.



The times and dates of sessions will be arranged in agreement with participants. We intend our first session to be in mid-February.

If you are interested in finding out more about what the sessions entail and how to participate, please email **David Scrutton** at [wensleydaleringers@gmail.com](mailto:wensleydaleringers@gmail.com) with your name and contact details. Alternatively, you can contact us via Facebook at Wensleydale Ringers.



**We're Recruiting!**

**NEW PAY RATES & BENEFITS**

**Production Operatives**

**&**

**Visitor Centre Roles**

We're investing in our Visitor Centre to create a stunning new catering facility, food hall and retail space opening this Spring. Full and part time vacancies both available.

**Find out more at**

[wensleydale.co.uk/work-with-us](http://wensleydale.co.uk/work-with-us)



## Charity Brunch and Bookstall

Thoralby and District WI are holding a charity brunch and bookstall in aid of Children in Need  
on

**Saturday, February 25th,  
10.30am to 1.30pm** at Thoralby Village Hall.

Bacon/sausage/egg rolls, tea and coffee.

## Penhill Ladies

On **Wednesday, February 15th** we look forward to hearing from Simon Eastwood "From Jonas Centre to Colburn Community Support"

Penhill Ladies meet in Carperby Village Institute at **7.30pm** on the third Wednesday in the month.

New members and guests (who are charged £5) are warmly welcomed. For more details phone **Shelagh 01969 663958**.

## Thoralby and District WI

Our regular soup and sweet lunches, which are open to everyone, continue on the 3rd Thursday of the month until April. We will also be holding a Charity Brunch on **Saturday, February 25th**.

Meetings are held on the 3rd Tuesday of the month at **7.30pm** in Thoralby Village Hall and this year's topics include flower arranging, a cookery demonstration, crafts and a talk on the history and nature of Cyprus.

Plans for outings include a visit to the red squirrels of Snaizeholme and a lunch event. We will be adding further dates throughout the year including local short nature walks and visits to Open Gardens and places of historic interest

You are welcome to come along and join us at our regular monthly meetings, which culminate with refreshments and a chance to meet everyone.

Any enquiries to **Sally Stone** (president) **01969 663373** or **Jean Styles** (secretary) **01969 663875**.

## Concert for the Wensleydale Tournament

A concert in aid of the Wensleydale Tournament of Music and Speech, featuring entrants and winners from this year's Tournament, will be held at Wensleydale School at **7.30pm, on Friday, March 31st**.

If not familiar with the Tournament, this will be an entertaining introduction to our long-standing event, and a chance for our talented participants to perform to a wider audience.

Ticket prices are £8 for adults, £5 for children (under 7s free), £20 for a family ticket (2 adults + 2 children). Tickets are available at the door, or can be booked in advance by contacting the Secretary on **07423 532544** or email [secretary.wts@outlook.com](mailto:secretary.wts@outlook.com).

## Events in Reeth Memorial Hall

**Friday, March 10th** - Aly Bain (fiddle) and Phil Cunningham (accordion) have won the BBC Radio 2 Folk Award for 'Best Duo'. Tickets £20 (£22 door). Very unlikely to be any tickets left on the door but always worth checking with us to go on the waiting list in case of late returns.

**Saturday, April 1st** - Saltfishforty are a fresh and dynamic duo hailing from the Orkney Islands. Tickets £15 (£17 door).

**Saturday, April 29th** - Jez Lowe. Singer-songwriter,. Tickets £14 (£16 door).

Tickets are available from Reeth PO or phone John Little **01748 884759** or visit [www.reethmemorialhall.co.uk](http://www.reethmemorialhall.co.uk) - tickets are half price for under 16s.

All concerts start at **8.00pm**.

ANDREW  
**HAWKINS** BUILDING  
CONSTRUCTION CONTRACTORS

NEW BUILDS | EXTENSIONS  
BARN CONVERSIONS | ROOFING & GROUNDWORKS  
APPROVED DAMP PROOFING & REMEDIAL  
TREATMENT SPECIALISTS

**Tel: 0800 002 9779**

Email: [hawkinsbuilder@hotmail.com](mailto:hawkinsbuilder@hotmail.com)

Unit 5 Harmsby Business Park, Harmsby Road, Leyburn, North Yorkshire, DL8 5QA

# Index to Advertisers

	Page		Page
Accountants, O'Reilly, Hawes	14	Kennels - Bladesdale	18
Accountancy, Yorkshire Dales	33	Logs, Springbank Logs, Hawes	17
Advertising Rates and Contacts	40	Logs, Seasoned Hardwood	19
Atkinson J.T., Builders Merchant	16	Massage, Mobile Therapist	15
Aysgarth Garage and Post Office	31	Music Tuition, Colin Bailey	33
Boiler Service – Efficient Heat	11	Optician - Mike Addison	23
Boiler and Aga Service, M.F.W.	4	Orthopaedic Massage, Reflex	22
Bookkeeping, Barn Studio	33	Pet and Wildlife Supplies, Rhodes,	7
Builder and Plasterer, M. Moore and Son	23	Pet & House Sitting, Home Run	32
Builder, Dinsdale John & Ted	17	Physio, Arena	18
Builder, R&B Construction	35	Plumbing and Bathrooms, Greiff	15
Builders, Moore and Blackhurst	28	Plumbing and Heating, Parfitt J	17
Building Contractor, Andrew Hawkins	37	Portable Appliance Testing	39
Building Services, Bricks and Mix	11	Post Office,	
Building Services, Fothergill M	33	Hawes, Bainbridge and Askrigg	39
Butchers, Cocketts, Hawes	26	Print Services, Pennine Print	29
Butchers, Hartle, West Burton	33	Print Services, Wensleydale Press	19
Chimney Sweep, Dales Sweep	32	Reflexology & Reiki, Askrigg	40
Coach Travel and Holidays – Bibbys	13	Scrap Car and Commercials Collection	13
Coal Merchant, Peacock	19	Sewing Needs; Kearton	22
Cumbria Stove Centre	19	Solicitor, Hall & Birtles	39
Dales Garage	17	Solicitors, McGarry	14
Dales Web Solutions	6	Stone House Hotel	16
Dance School: Dales Dance	31	Sycamore Country Store	28
Dental Lab, Orchard	32	Sykes House, Askrigg	30
Eco Cleaning Products	13	Tailoring - Applegarth Couture	13
Edgley Garage, Aysgarth	25	Taxi, Peacock, Bainbridge	19
Electricians - Teasdale	39	Tea Room, Hamilton's, Aysgarth	6
Estate Agent, Jessop Robin	9	Tea Room, Mill Race, Aysgarth	27
Fabrics for sale	10	Timber Buildings, Castle	31
Fabrics – Pennine Outdoor	11	Travel Counsellor	26
Fish Market, Hawes	35	TV Aerial & Satellite Services. J.Banks	28
Flooring - NH	15	Vets Bainbridge	25
Furniture, Handcrafted, Tom Addison	33	Vets, Wensleydale	23
Hawes Country Store	27	Wensleydale Creamery, Hawes	16
H&M Craftsmen, Ingleton	22	Wensleydale Tree Services, D. Allen	35
Hairdressing, Edie Peacock	9	White Rose Hotel, Askrigg	15
Hairdressing, Twisted	13	Woodcraft Studio & Timber Services	7
Healing Collective, Swinithwaite	31	Yorebridge House Hotel	29
Hearing Tests and Aids	34	Yore Mill Craft Shop & Gallery	19
Ironing Service–Tracy Hume	26	Yorkshire Foot Clinic	11
Joiner and Cabinet Maker, Bushby	13		
Joiner, Solid Joinery Solutions	29		

## Forthcoming Free Events

Digital Talk: Plastic Free Woodlands -  
**Wednesday, February 1st, 4.30pm.**

50 million trees must be planted each year to counteract Britain's contribution to climate change. Trees often need protecting from grazing animals or harsh weather conditions to become established, however without radical changes to the way we plant trees, 1.5 billion plastic tubes may end up littering the environment and damaging ecosystems by 2050. Mike Appleton, Plastic Free Woodlands Project Officer for Yorkshire Dales Millennium Trust and Vice President of Friends of the Dales, Mark Corner will talk about the YDMT project to break our reliance on plastic and find sustainable alternatives in woodland creation.

Digital Talk: Raptor Persecution -  
**Wednesday, February 22nd, 4.30pm.**

Investigations Officer for the RSPB, Howard

Jones will bring to life the cases and day to day work of fighting wildlife crime, with a focus on North Yorkshire – the worst place in the UK for bird of prey persecution.

Both these talks are free and by Zoom, to book your place please email [victoria.benn@friendsofthedales.org.uk](mailto:victoria.benn@friendsofthedales.org.uk).

Social Stroll - **Wednesday, March 22nd, 9.30am – 1.00pm.**

The first of our Social Strolls, created for people who want to walk over less arduous terrain with time to chat and socialise. This walk promotes the benefit of using buses to get out into the Yorkshire landscape, this one incorporating a linear route back. After meeting at Skipton Bus Station, walkers will take the bus to Gargrave, returning to Skipton by the Leeds Liverpool canal tow path.

This walk is free, but booking is essential as numbers are limited. To secure your place email: [victoria.benn@friendsofthedales.org.uk](mailto:victoria.benn@friendsofthedales.org.uk).

### Portable Appliance Testing (PAT)

**Hawes DL8 3NT**

Certificates & Reports supplied on  
each appliance tested.

Please call for free quote and advice

**Wayne Webster 01969 666020  
or 07766 640905**

### TEASDALE ELECTRICAL

Your local electrician serving the dales and the surrounding areas

Askrigg

North Yorkshire

**Tel - 07814 184974 (Steve)**

Email - [teasdaleelectrical@icloud.com](mailto:teasdaleelectrical@icloud.com)



**Hall & Birtles**  
-SOLICITORS-



For all your legal requirements  
offering a full range of services.

**Hawes DL8 3QL, Tel 667171**

email: [hawes@hallandbirtles.co.uk](mailto:hawes@hallandbirtles.co.uk)

and at **Leyburn, Golden Lion Yard,  
DL8 5AS, Tel 01969 625526.**

email: [Stuart@hallandbirtles.co.uk](mailto:Stuart@hallandbirtles.co.uk)

Regulated and authorised by the  
Solicitors Regulation Authority

### HAWES POST OFFICE in the Community Office

OPENING TIMES:

9.00am to 5.00pm Monday to Friday

9.00am to noon on Saturday

**Phone number: 01969 667201**

### BAINBRIDGE POST OFFICE

Post Office open at Bainbridge  
in Sycamore Hall 9.00am to 11.00am  
Mondays and Wednesdays

### ASKRIGG POST OFFICE

In Sykes House, Noon to 2.00pm  
Mondays and Wednesdays



## LEYBURN ARTS & COMMUNITY CENTRE

Tickets & Info: **01969 624510** [leyburnartscentre.com](http://leyburnartscentre.com)

# CINEMA

(£6, or 60+/U14 £5)

**FRI 3 FEB** 6pm **Ticket to Paradise** (12A) 1hr 44m  
**FRI 10 FEB** 6pm **Juniper** (15) 1hr 34m  
**FRI 17 FEB** 6pm **Emily** (15) 2hrs 10m  
**FRI 24 FEB** 6pm **Blind Ambition** (12A) 1hr 36m

**OTHER EVENTS & NEWS** (Half price entry for our volunteers)

**SAT 18 FEB** 2pm **Talk: Undressing a Medieval Lady** £10  
**THU 23 FEB** 7pm **Live Event Cinema: Othello** £15  
**SAT 18 MAR** 7:30pm **Live Country Music: Dixon County** £12  
**THU 30 MAR** 7pm **Live Event Cinema: Life of Pi** £15

**Dales Dance School of Performing Arts.** Going from strength to strength in our new professional dance studio. Extra classes added.

**Feeling the cold?** Pop along Wed 10am to 4pm or Fri 10am to 2pm for a warm welcome, hot drink etc. Free entry.

*Please book events in advance if possible. Call us Mon-Fri 1-4pm*



## Reflexology Reiki

The Old Beet House  
Askrigg

[lisa.hardi@gmail.com](mailto:lisa.hardi@gmail.com)  
**07791 521310**

## Postal Subscriptions

If you would like to receive the Newsletter by post every month the cost is £14 per annum. Please pay by BACS (**Account 41055771, sort code 40-23-23**) and send your full address details to [uwnlininput@gmail.com](mailto:uwnlininput@gmail.com). Or send a cheque for this amount (made out to the Upper Wensleydale Newsletter) plus your details to Janet Thomson, Stone House, Thornton Rust, DL8 3AW.

## Advertising

**Boxed adverts: £6, £12, £18**  
(dependent on size)

There is a big reduction for six issues or more, so for six issues the totals are:  
**£25, £50 or £75**

**Greetings etc. £2**  
**What's ons (non-commercial) are free**

**Contact for adverts:**  
**Barry Cruickshanks**  
**01969 667458**  
[uwnlininput@gmail.com](mailto:uwnlininput@gmail.com)

*Whilst we try to ensure that all information is correct we cannot be held legally responsible for omissions or inaccuracies in articles, adverts or listings, or for any inconvenience caused. Views expressed in articles are the sole responsibility of the person by-lined. Articles by committee members carry just their initials.*

*We appreciate being asked before any part of the Newsletter is reproduced.*

## Published by

The Upper Wensleydale Newsletter  
Lilac House, The Holme, Hawes, DL8 3QR  
**01969 667458**

Email for submission of articles, what's ons, letters etc.: [uwnlininput@gmail.com](mailto:uwnlininput@gmail.com)

Newsletters on line, simply search on "Upper Wensleydale Newsletter"  
Archive hard copies back to 1995 are in the Dales Countryside Museum resources room.

**Editors:** Barry Cruickshanks,  
Kevin Davis,

**Committee:** Malcolm Carruthers,  
Tony Hutchinson, Karen Jones,  
Neil Piper, Karen Prudden,  
Janet W. Thomson (Treasurer),

**Founded in 1995**  
**by the late Alan S. Watkinson**