

THE UPPER WENSLEYDALE NEWSLETTER

**Issue 206
September 2014**

**Donation please:
30p suggested or more if you wish**



Worton

Published by

The Upper Wensleydale Newsletter
Burnside Coach House,
Burtersett Road, Hawes DL8 3NT

Tel: 667785

e-mail: alan.watkinson@virgin.net

Printed by Wensleydale Press

Committee: Alan S. Watkinson,
Barry Cruickshanks (web), Sue E. Duffield,
Karen Jones, Alastair Macintosh,
Neil Piper, Karen Prudden,
Janet W. Thomson (treasurer), Peter Wood

Final Processing: Sarah Champion,
Adrian Janke

Postal Distribution: Derek Stephens

**Upper Wensleydale
Newsletter**

**Issue 206 September 2014
Features**

Hardraw Brass Band Contest **5**

BAWB School Collaboration **20**

Police Report **19**

Competition **5**

Ruth Guy **22**

Doctor's Rotas **16**

Dales Calendar **25**

Sue Foster **23**

What's On **15 & 16**

Plus all the regulars

PLEASE NOTE

This web-copy does not contain the commercial adverts which are in the full Newsletter.

As a general rule we only accept adverts from within the circulation area and no more than one-third of each issue is taken up with them.

Advertising

Boxed adverts: £6, £12, £18

There is a big reduction for six issues or more, so for six issues the totals are:

£25, £50 or £75

Greetings etc. £2.00

What's ons (non-commercial) are free

Contacts for adverts:

For Hawes area and westward:

Barry Cruickshanks, Ashfield, Hardraw: 667458

For elsewhere:

**Sue Duffield, Fellside,
Thornton Rust: 663504**

Whilst we try to ensure that all information is correct we cannot be held legally responsible for omissions or inaccuracies in articles, adverts or listings, or for any inconvenience caused. Views expressed in articles are the sole responsibility of the person by-lined. Articles by committee members carry just their initials. We appreciate being asked before any part of the Newsletter is reproduced

**THE OCTOBER 2014 ISSUE
WILL BE PRODUCED ON
SEPTEMBER 22nd to 24th**

**DEADLINE FOR COPY:
THURSDAY
SEPTEMBER 18th**

Editorial

“Welcome to Wensleydale”. We seem to have done a good job this summer, as the number of visitors and tourists appears to be holding up well. There’s a ‘feel-good’ factor about - for most people!

Now what about the welcome we extend to incomers who intend to be permanent residents? Are we still a bit ‘on our guard’? An incomer was once asked “why have you come to live here?” We wonder if the same attitude would be shown to those moving **from** here to towns or cities for education, work or to be nearer theatres or other big events. We also accept that some people will move away to be nearer better transport or health services. Are they asked “why have you come.”

Is it just as acceptable that people should come here for a variety of reasons? General work? Yes there are opportunities and vacancies, otherwise our overseas workers wouldn’t be here. Specialised work? It becomes easier by the day for people to set up on-line businesses, thereby living here but in touch with ‘the world’! Others may see in these areas a gap in the market and an opportunity to venture into a new business; good luck to them. Yet others come in later life to an area they may have visited very frequently and now wish to live here.

Maybe they should all come with a C.V. like applying for a job! So we would know: age; previous residence; occupation; marital status; interests etc.

There are more serious issues; there is no doubt that mobility of the population generally makes for a more fluid lifestyle with people more eager to settle quickly into their new location. But how? It can be a tricky task. Some people arrive straight from high-powered jobs with responsibility; others may have run companies or schools. They may have been the movers and shakers where they were and possibly coming after an early retirement they want to get involved.

There is a temptation on the part of the ‘locals’ (How long do you have to have been here to be one?) who may be tired with long years of community service, to rush to the newcomers for help without getting to know them. It could be that some newcomers are a bit too eager and that can cause resentment with locals feeling they are being pushed out by people who ‘know it all’.

Nevertheless, it has to be acknowledged that in many of our local organisations, village halls, churches, clubs, social and special interest groups, the positions of responsibility are often held by relative newcomers to the area.

Surely the best and most vibrant communities are those where the long-standing knowledge of committed locals works alongside the wider experience and enthusiasm of some newcomers. Even better if more of our younger people can also be persuaded (though some now are) of the feel-good factor and the joy of getting involved and taking responsibility.

Calling Aspiring Bell Ringers

There will be a Bell Ringing Recruitment Day at St Oswald’s, Askrigg on **Saturday 6th September from 10.00am until 4.00pm.**

Information will be provided in the church on bell ringing and accompanied tours to the ringing room for those interested in further tuition. There will be NO access to the tower roof.

K.P.

Hawes Gala AGM

The AGM will take place on **Wednesday, September 17th at 7.00pm** in the back room of the Fountain Hotel.

This meeting is open to the public and all are welcome. The accounts for the Gala’s current financial year will be presented.

This year several members of the committee have announced their intention to resign and, consequently, we are looking for new members to ensure that the Gala continues to thrive into and beyond its 48th year. If you can spare a small amount of your time over the coming year, please come along and get involved.

Ian Dixon

‘Young Voices’ Concert

in the Market Hall, Hawes
on **Friday 26th September at 7.00pm.**
£6.00 at the door.

Tea and Biscuits, Raffle in the interlude.
Proceeds towards the St Margaret’s Church
Restoration Fund

Summer Competition Answers

1. Beam Valley = RAYDALE
2. Distant mixed up brown is =
FAR BORWINS
3. Test trounce = COUNTERSETT
4. Muddles racer in mixed byt =
THORESBY
5. Pull hotting = THUPTON GILL
6. Stroll to Redmire Falls from here =
SWINITHWAITE
- 7 Big Pale Girl = HIGH WANLASS
8. O Just Why? = JUSTY HOW
9. Stir the stew by the castle =
WEST BOLTON
10. Pentecost = WHIT
11. Post collapsed = TAKE FELL
12. Nagger = GRANGE
13. Re beggar taw = GREAT WEGBER
14. Blonde = BELDON
15. Top of map garden tools =
NORTH RAKES
16. Clearing crossing = THWAITE BRIDGE
17. Addie is weld = WIDDALE SIDE
18. Doss flea = FOSSDALE

The word to be found from some of the last letters of the answers is NEWSLETTER.

The winner of the August £50 prize is **Jane Ritchie.**

September Competition

Things you might find in the SHED!

Anagrams

1. BE TUCK
2. SIR DR MALLONEY
3. NEAT SNOW
4. UNITE SITU SPENT BUTTER
5. PA RUBS THIN
6. I'VE STILL REP
7. LANCES IN SWARDS
8. RAN TWIN CAGE
9. MEL WON WAR
10. GREBE WHIPS SUN
11. EU ACTRESS
12. HEP POSIE

Eunice the Ewe



Couldn't find me last month?
I was on holiday!
Or truth to tell we forgot to hide her!
I am definitely in this issue!

Big Cheeses



*Derek operating labelling
machine in 1982*

Walking or driving through the Upper Dales this last month one could hardly fail to notice the very delightful, thoughtful and efficient way of encouraging public sales of our locally made Wensleydale cheese.

The novel way of sticking labels on the ends of hay bales standing in the flanking fields was a brilliant way of promoting our local product. Congratulations to the brain behind it.

I could in my time at the Creamery maybe have stuck a label on the bales but I would have wanted a bit of help lifting them on to the machine!

Derek Ramsden

**Hardraw Scar
Annual Band Contest
Sunday September 14th
from 10.00am
Adjudicator: Mr I Brownbill**

BANDS IN ORDER OF PLAY	NATIONAL GRADE
Shepherd Group Concert MD Mike Pratt	Ungraded
Knaresborough Silver MD Steve Morland	4th
Murton Colliery MD Lee Morris	1st
Friendly (Sowerby Bridge) MD Neil Robinson	3rd
Beverley Brass MD Peter Kench	Ungraded
Coleshill Town, Chesterfield MD Stephen Fagg	4th
Leyburn MD George Lundberg	Ungraded
Otley Brass MD Will Rowson	Ungraded
Shirland Welfare , Cheshire MD Lynden Cooper	2nd
Hade Edge MD. Jonathan Beatty	1st
Besses o' th' Barn MD Dean Jones	4th
Durham Miners Association MD Stuart Gray	1st
Ratby Coop Mid Leicestershire MD Geoff Newman.	4th

The entry fee is £9. Refreshments are available on site or from the Green Dragon Inn.

**Life is Blooming
in the National Park**

A new report shows the National Park is home to many rare species of plants and animals - from Red Squirrels to Black Grouse - and they are thriving.

65 per cent of the area of priority habitats in the Yorkshire Dales National Park was in "good" condition - and we have achieved an 89 per cent success rate so far. We have also found that the populations of 38 of the 46 Local Biodiversity Action Plan species (78 per cent) that are currently 'monitorable' are stable - which has exceeded our initial target.

In fact, we are bucking the national trend with some of our important priority bird species like Lapwings, Curlews and Black Grouse because the populations are stable here while they are in decline nationally.

Other successes in the first years include:

* 45 per cent of upland calcareous grassland in England is found within the National Park and more than 93 per cent is in good condition.

* Conservation work supported by a number of organisations including YDNPA, Natural England and Yorkshire Dales Millennium Trust has resulted in more than 95 per cent of upland hay meadows being classified as in good condition.

* The majority of Northern Brown Argus butterfly sites are in appropriate management, and the populations of Small Pearl-bordered Fritillary butterflies are stable.

* The distribution of Red Squirrels is stable, as is the Dormouse population following its successful re-introduction in 2008 at Freeholders' Wood next to the Aysgarth Falls National Park Centre.

* Populations of two LBAP priority invertebrate species - the Fine-lined Pea Mussel and the Round-mouthed Whorl Snail - are stable.

The populations of 61 per cent of priority plant species in the National Park are stable. This includes Lady's Slipper-orchid, Marsh Saxifrage and Field Gentian.

**On Behalf of
Lippy Logic/Hawes Church
Restoration Fund**



***Zut Alors! Two ladies meet
The Tour de France near Hawes!***

Two ladies took on the might of the Tour de France when it cycled through Hawes for dramatic purposes - and will present the hilarious results in aid of the Hawes Church Restoration Fund.

Lippy Logic Rides Again is at The Dales Countryside Museum on **Wednesday 8th October at 7.30pm**. It features original comedy and drama written, produced and presented by Christine Hooley and Veronica Caperon. They describe their style as "Alan Bennett meets Victoria Wood" and will perform their 'encounter' with one of the world's greatest sporting events near Hawes. They also present their new piece "Photographing Kites" which stirs up poignant family memories with both humour and acute observation of human emotion.

The duo bring together "Veronica's formidable writing skills and Christine's remarkable ability to get under the skin of the characters she portrays"

Tickets are £8 and available from **666960**, annpilling@aol.com, The Sweet Shop and Whites of Wensleydale, Hawes. More details and reviews about the show and Lippy Logic can be found at lippylogic.co.uk.

Letters to the Newsletter

Please note that although we welcome letters and emails, they must include the name of the sender and will not be published without it, unless agreed beforehand with the committee for very good reasons.

**Important Notice
for Business Ratepayers
Relief Available on Retail Premises**

Any premises classed as retail with a rateable value of less than £50,000 may be eligible to claim **up to** a £1,000 reduction from their Business Rates for the Next 2 years (2014/15 and 2015/16).

Provided the Business has not received over 200,000 euros in state aid over a 3 year rolling period and they are not already in receipt of a 100% reduction from Business Rates they **may be** eligible to apply and should contact the Council straight away by phoning **Gillian Thomson on 01748-901053** or email:

local.taxation@richmondshire.gov.uk

This is a central government initiative and I would ask ratepayers who have not yet claimed this relief to do so immediately by contacting the Council.

Yvonne Peacock

Ride and Stride

A sponsored bike ride or walk in which people from all over the country walk or cycle between churches

**Big Sponsor Day
13th September 2014**

A number of us will be Riding or Striding round the churches in Penhill benefice to raise money for our churches.

All monies raised go to the Historic Churches Trust. 50% comes back to our own churches, with 50% being retained by the Trust, along with any Gift Aid.

The Trust funds are used generally for the upkeep of our Yorkshire churches.

Thank you in anticipation for your support of us all.

Kristin Whalley

BAINBRIDGE

2 Bedroom Cottage For Sale
Rear Garden, Fantastic Views
Econ. Air Source Central Heating
01287 634077

Best Foot Forward

This was a walk I called the Tour de Wensleydale because it took place a week after *Le Tour*. For a change there were eight of us, yours truly being the only Yorkshireman present. We started in Leyburn, which gives a nice easy descent through the fields to Wensley. Pleasantly through the woods, the river looked decidedly short of water, a reminder of how little rain we had had recently (well, as I write this a week later it is pouring down).

From Lord's Bridge there's a great view of Bolton Hall but from there to Penhill it's uphill all the way. Views from the Gallops are good but it pays to keep out of the way of the thundering hooves. What with that and a couple of Eurofighters blasting up the dale, it's not always all that quiet. Some twittering meadow pipits in the intervals made a nice change.

Pen Hill is a great viewpoint. It stands as a sentinel guarding Wensleydale and has nothing in its way eastwards. The Hambleton Hills are a smudge on the horizon in summer but a much sharper skyline when it's colder. In the old days if you went up there in the dark you could see the blast furnaces on Teesside. Further back in time you might have met trolls, the Bargest or Bartle, who was reputedly burned hereabouts. More about that at Witton Feast on 23rd August.

The pile of stones which is prominent from the valley and which used to be much bigger turns out not to be the top. Neither is the Beacon (of Armada fame) a hundred metres further on. The true summit of Penhill, at 1814 feet or 553 metres, is called the Height of Hazely and is rarely visited by anyone except a few grouse. There is no trig point, cairn or anything to denote the top, just find the highest tuft of heather.

Anyway we didn't go there either, but followed the old quarry track down to High Lane and West Burton. Lunch on Ox Pasture gives a pleasant view across to Thoraby which was our turning point before heading back down the dale. What? I hear you say! Tour de Wensleydale, you've hardly started. Well yes, I agree and

it did occur to me that it would be quite magnificent to plan a Tour of the Newsletter Area via Dentdale and Upper Swaledale but now we're getting into a fantasy world recently inhabited by our esteemed ed! (see last edition).

So off we went to Aysgarth Falls, more rock than water, through Carperby and up on to Bolton Parks where a refreshing breeze cooled the heat of the day. A rest in the shade of a Redmire tree and then up again onto the Shawl. How satisfying it was to look across to Penhill and be amazed at how far we had come. The finish came with mixed feelings: joy at being able to rest tired legs; sadness at it all being over. However, a good pint at the end makes all the miles worth while and brings on thoughts of more walks, more planning and more days out. Splendid!

N.P.



Moorcock Show

Raising Funds for Air Ambulance

Would you like the chance to win £25? If so, come to the Moorcock Show on **September 7th** and enter a competition to raise funds for the Northern Air Ambulance.

All you have to do is name three members on the Committee of the Moorcock Show who have appeared on the television and on which shows.

You can enter the competition by bringing your entry to either the Northern Air Ambulance stall or to the Secretary's trailer at the show.

Entries cost £1. All proceeds go to the Northern Air Ambulance.

Colin Luckett

Events at TOSH

Saturday September 6th

PENHILL POACHERS – A UNIQUE LOCAL FOUR PIECE BAND.

8.00pm £10 to include supper

ART WORKSHOP WITH KAREN INNES – ALL PROFITS TO THE OLD SCHOOL HOUSE

10.00am-4.00pm £45 to include a light lunch

Saturday September 13th

ART WORKSHOP: details as September 6th

Monday September 15th

CHARITY CURRY NIGHT AT SAFFRON IN AID OF THE OLD SCHOOL HOUSE

6.00-8.00pm and 8.00-11.00pm two sittings

£19.99 PER PERSON

Saturday September 20th

JESSE TERRY – NASHVILLE AWARD WINNING SINGER/SONGWRITER

7.30pm £7.00

Tuesday September 23rd

FASHION SHOW IN PARTNERSHIP WITH ST CATHERINE'S HOSPICE SHOP.**7.00pm**

£10 to include a glass of wine.






Hawes Allotments

Would you like to grow your own vegetables but do not have the space in your garden? Then, like myself, you need an allotment, but unfortunately there are none in Hawes.

However, under the Small Holdings and Allotments Act 1908, the Council are required to provide allotments if six or more registered electors ask them to do so.

So if you're interested in acquiring an allotment and you live in the Hawes area, please contact me and I will coordinate a request to the Local Authority.

Colin Luckett
Tel. 667071

		Digital	Film	Theatre	Proudly Presents
		Comfy Seats	Surround Sound	Licensed Bar	
Calvary (15) 1 hr 40 m <i>Starring: Brendan Gleeson, Chris O'Dowd, Kelly Reilly</i> After he is threatened during a confession, a good-natured priest must battle the dark forces closing in around him. <i>September – Thursday 11, Friday 12 at 5.00 pm and 7.30 pm</i>					
Inside Llewyn Davis (15) 1 hr 44 m <i>Starring: Oscar Isaac, Carey Mulligan, John Goodman</i> A week in the life of a young singer as he navigates the Greenwich Village folk scene of 1961. <i>September – Thursday 18, Friday 19 at 5.00 pm and 7.30 pm</i>					
The Love Punch (12A) 1 hr 34 m <i>Starring: Pierce Brosnan, Emma Thompson, Timothy Spall</i> A divorced couple scheme to recover the retirement money that was stolen from them. <i>September – Thursday 25, Friday 26 at 5.00 pm and 7.30 pm</i>					
Now You See Me (12A) 1 hr 55 m <i>Starring: Jesse Eisenberg, Common, Mark Ruffalo</i> An FBI agent and an Interpol detective track a team of illusionists who pull off bank heists during their performances and reward their audiences with the money. <i>October – Thursday 2, Friday 3 at 5.00 pm and 7.30 pm</i>					
The Old School House, Richmond Road, Leyburn DL8 5DL T: Bookings 01969 624510 E: admin@oldschoolhouseleyburn.com F: facebook.com/oldschoolhouseleyburn W: oldschoolhouseleyburn.com - Registered Charity No: 1122092					Tickets Adults £6 Concessions £5

Hawes United Football Club

This year's fund raising sponsored walk will take place on **Sunday September 14th**.

It will be a circular walk taking in Burtsett, Roman Road to Bainbridge, Askrigg and back to Hawes via Abbotside.

The 12 mile walk will start at Carrs Billingtons, Hawes, and finish at the Fountain Hotel where refreshments will be served.

Please meet at Carrs Billingtons at 10.00am.

For sponsor forms, more details, or to make a donation please contact **Dave Calvert (667334) or Gordon Sleightholm (667348)**.

**Ribblesdale Cheese
Scoop Three Golds
at International Cheese Show 2014**

Hawes based artisan goat cheese specialists, Ribblesdale Cheese won three Gold awards at the International Cheese Show, Nantwich in July. Two gold awards were given for their new Gouda Gold, an aged goat gouda made using milk from Lancashire and another Gold for their soft Goat Curd, repeating their Gold award at the International Cheese Show in 2013. Betty's of Harrogate have Ribblesdale Goat Curd on their summer menu.

Managing Director Iona Hill says, 'we are so proud of the three Gold awards at the 2014 International Cheese Show, it is a massive achievement for the three of us: Stu, Andrew and I. We beat some stiff competition from some very talented cheese makers, so we could not be more pleased.'

Gouda Gold is available from independent cheese shops, farm shops and delicatessens. Ribblesdale Goat Curd is available from Delifresh and Wellocks wholesalers and at Betty's Tea Rooms.

About Ribblesdale Cheese

There are two cheese makers in Hawes: we are the small 2 ½ person cheese maker specialising in artisan goat cheese. We make seven goat cheeses, three ewe cheeses and a variety of Wensleydale. Iona Hill took over the business from her uncle who formed it in 1978.

Contact details:

Tel **667788** email@ ionahill@gmail.com

**Ribblesdale Cheese,
Hawes Business Park**

We are looking for a Tuesday person to help us hand wax cheese. We will provide whites, hairnets and training; the person just needs to be able to stand for long periods of time, be aware of food hygiene and be methodical. Hours are 9.00am to 3.00pm - approx and could include potting up chutneys, waxing cheese or possibly even helping in the dairy.

Please contact **Iona or Stu on 667788**.

Yoga Classes

Relax, stretch, unwind your tensions and liberate your health, with tried and tested knowledge from one of the world's greatest wisdom traditions, practised by millions throughout centuries, increasingly validated by modern science to optimise mind and body function. Even a little of the most basic skill, practised regularly, can enhance health and wellbeing immeasurably.

Yoga classes with Sue Lightfoot will recommence for Autumn Term the week beginning Monday 8th September.

**Wensley Village Hall,
Mondays 7.00-8.30 pm
West Burton Village Hall,
Wednesdays 7.00-9.00pm**

Sue is a fully qualified and experienced yoga teacher. Classes accommodate a range of abilities and new students are welcome.

Individual tuition tailored to specific needs is also available, by appointment.

For further details, advice and enrolments please contact Sue by telephone 663993

or e-mail susan.lightfoot1@homecall.co.uk

**Got your A Level Results
and heading off to University?**

Any student living within the Newsletter circulation area and now going off to University is entitled to apply for our Book and Equipment Award.

Please apply either in writing or email (details on the back page of the Newsletter) giving full details of the University and of the course to be followed, together with your full home address.

We will let you know if your application is successful.

When you have bought the books and equipment needed for the course, send the receipts or photocopies by post, and you will be entitled to a grant of up to £250.

UWIPS

Upper Wensleydale Industrial and Provident Society (Registration no. IP27406R) is the organisation that has provided transport, mainly to/from day care in Bainbridge since 1991. At the last AGM, the committee took the difficult decision to bring the organisation to a close and cease activities.

It was evident that the yellow minibus was becoming too expensive to keep on the road because of substantial repair and maintenance costs. For the past two financial years the organisation has operated at a loss. Recently, it was determined that the funds required to get the minibus through the MOT were more than the vehicle was actually worth. Additionally, it would cost between £40K and £55K to replace the bus with a similar one, fitted with a lift for wheelchair users, and there are not sufficient funds to do this.

Additionally, legislation compliance has over the years become very costly, costs that were not incurred when the service was first introduced, and like most voluntary bodies, we have faced increasing difficulty in recruiting new volunteers to serve.

It is the organisation's intention to hold a final extraordinary AGM in October this year, at which final financial matters will be dealt with. At this meeting, the committee intends to consider correspondence received in relation to the closure and also discuss and agree to the distribution of any remaining financial assets.

The governing document states that any surplus funds should be distributed to any other charity having similar objects (i.e. to assist with transport difficulties of the aged and/or infirm in the Upper Wensleydale.) If no such organisations can be identified we will look to expand the geographical area or perhaps look at similar charities that do not have the current restriction of 'aged and infirm', rather serving the wider public in a charitable way. If you know of any charitable organisation in Wensleydale or Swaledale that may wish to apply for a share of the available funds, please apply in writing to the secretary before the end of September.

If you wish to have an informal conversation, **Geoff's telephone number is 650117** and

e-mail address is geoffphilips@yoredale.co.uk.

Hawes Indoor Bowling Club Anniversary

In 2014 the Hawes Indoor Bowling Club is celebrating its 30th Anniversary.

Of the original founder members two, Edwin Pratt and Thomas Raw, are still regular players with the club. The Bowling Club is actively seeking new players (male and female) to join for a friendly game of indoor bowls. The Club meets every **Tuesday at 7.30pm** in the Market Hall. No previous experience is necessary, so why not come along and have a go – you might have a hidden talent or just enjoy the company.

Ring **667458** if you have any queries.

B.M.C

Family History

Meetings of the Upper Dales Family History Group recommence on **Wednesday, September 24th**, with an evening meeting at **7.30pm** in Harmby village hall near Leyburn. The speaker is Angela Clare on 'Gert and Jack Adam- Letters of a Doncaster Couple in WWI'. Non-members very welcome, £2. Contact telephone: **01748-850423** for details or see the website at www.upperdalesfhg.org.uk

Hawes Art Group

Hawes Art Group's first meeting of the autumn session is on **Wednesday September 17th at 1.00pm**, firstly at Lane House for a DVD then in the Market Hall at 1.30pm. New members are very welcome to join our small friendly group. If you are interested come to our first session. More information from **Ann Wood on 667897**.

Scoffing at a Pioneer

England 1830

In these days of lightning-fast express trains it is hard to realise that 150 years ago the locomotive was in its infancy, and its ultimate possibilities were not dreamed of. At that time a well-known resident of Liverpool said that, if it were ever proved possible for a locomotive engine to travel at ten miles per hour, he would eat a stewed engine meal for breakfast. Whether the gentleman lived long enough to enjoy this curious meal is not recorded.

The press almost universally scoffed at the same idea of rapid train travel, declaring it impossible and denouncing its advocates as lunatics and fanatics. 'Twelve miles an hour', exclaimed the *Quarterly Review*, in 1825 'Twelve miles an hour! As well might a man be shot out of a Congreave Rocket'.

In about 1830, the great pioneering steam engineer George Stephenson was cross examined (and not for the first time) by a parliamentary committee with regard to constructing a railroad from Liverpool to Manchester. The interview was recorded for posterity by a local newspaper reporter.

'Well, Mr Stephenson, perhaps you could go 17 miles an hour?'

'Yes', was the reply. 'Perhaps some 20 miles might be reached?' 'Yes, certainly.'

'Twenty-five, I dare say, you do not think impossible?' 'Certainly not impossible.'

'Dangerous?' 'Certainly not.'

'Now tell me, Mr Stephenson, ' said the parliamentary member with indignation, 'will you say that you can go 30 miles?'

'Certainly,' was the answer as before.

Questions ended for a time, and the wisecracks of the committee burst into a roar of laughter. But Stephenson built the road and on his trial trip, astonished the world with a speed of 36 miles an hour.

(From 'Railway's Strangest Journeys' by Tom Quinn, published by Portico, RRP £8.99)

Fitness Classes

For those of you planning your Autumn activities the following classes will be running from the second week in September:

Monday: Pilates – Thornborough Hall 9.30am

Pilates – Leyburn Primary School 5:45pm

Circuit Training – Leyburn Primary School 7:00pm

Tuesday: Staying Steady (a very gentle exercise class) Brentwood 10:00am

Pilates – Wensley Village Hall 6:00pm

'Strictly' (as seen on TV!) – Leyburn Primary School 7:30pm

Wednesday: Beginners Pilates – The Old School House 9:30am

Pilates – The Old School House 10:45am

Pilates – Reeth Memorial Hall 6:00pm

Thursday: Zumba Gold (for those preferring a slower pace) – Thornborough Hall 10:30am

Pilates – Sycamore Hall, Bainbridge 5:50pm

In addition there is a Box Fit class planned on a Wednesday evening.

Please register your interest as it will only run if there are sufficient numbers.

For further information or to book a place please ring Lesley on 07989 365363 or email: info@shapeupyourhealth.co.uk

Wensleydale Railway Heritage Centre Rural Crafts Weekend Aysgarth Station

Saturday and Sunday, September 13,
14th
10.00am to 4.00pm

Homestay Teaching Families

Home Language International (HLI) is not a language school, it is a family-run business offering language courses in over 30 countries worldwide. HLI are looking for families locally, with a member of the family having a teaching qualification (EFL or PGCE etc), to host international students at home and teach them English, treating them as a member of the family. Students can be of any age but most tend to come to the UK in the school and university holidays and are from a number of countries e.g. Spain, Italy, Russia. Host families are paid between £210 and £455 per week depending upon number of hours of teaching needed.

HLI has been in existence for many years but with most of the students going to the South of England. We would like to get this going locally.

My contact details are **Joy Garner**
joygarner@tiscali.co.uk Tel. 01748 824282

A Huge Thank You

...to you all for coming to River View, Cowgill on August 2nd on such a terribly wet day to support our charity tea party in the garden.

We amazingly raised **£1034** which will be donated to Dent First Responders, North West Air Ambulance, Marie Curie Cancer Care and Cave and Fell Rescue.

Thank you again for donations of cakes, gifts and most of all, your time.

Margaret and Tony Playfoot

Gunnerside Methodist Chapel

York Philharmonic Male Voice Choir
will give a concert on

Saturday September 13th at 7.00pm

Tickets £8 at the door.

All proceeds for chapel funds

Sandra and Jim Facer

Happy 30th Wedding Anniversary

September 8th

Love from all the family

Up

I'm sure you will enjoy this. I never knew one word in the English language can be a noun, verb, adjective, adverb, preposition That word is **UP**

It's easy to understand UP, meaning toward the sky or at the top of the list, but when we awaken in the morning, why do we wake UP?

At a meeting, why does a topic come UP? Why do we speak UP, and why are the officers UP for election (if there is a tie, it is a toss UP) and why is it UP to the secretary to write UP a report?

We call UP our friends, brighten UP a room, polish UP the silver, warm UP the leftovers and clean UP the kitchen. We lock UP the house and fix UP the old car.

At other times, this little word has real special meaning. People stir UP trouble, line UP for tickets, work UP an appetite, and think UP excuses. To be dressed is one thing but to be dressed UP is special.

And this UP is confusing: A drain must be opened UP because it is blocked UP.

We open UP a store in the morning but we close it UP at night. We seem to be pretty mixed UP about UP!

To be knowledgeable about the proper uses of UP, look UP the word UP in the dictionary. In a desk-sized dictionary, it takes UP almost a quarter of the page and can add UP to about thirty definitions.

If you are UP to it, you might try building UP a list of the many ways UP is used. It will take UP a lot of your time, but if you don't give UP, you may wind UP with (UP to) a hundred or more.

When it threatens to rain, we say it is clouding UP. When the sun comes out, we say it is clearing UP. When it rains, the earth soaks it UP. When it does not rain for a while, things dry UP. One could go on and on, but I'll wrap it UP, for now . . . My time is UP!

Oh . . . One more thing: What is the first thing you do in the morning and the last thing you do at night?

U P

Did that one crack you UP?

Now I'll shut UP

Leyburn Bowling Club

Disappointingly we had to cancel our August Car Boot owing to the adverse weather. We are, however, pleased to have been able to reschedule the event for Sunday 31st August, again at our usual venue of Craken House Farm Field, Harmby Road, Leyburn, (opposite Tennants). All the features originally planned will be there (tombola, bric a brac stall, bottle in a bag competition, and sizzling bacon butties for sale). As the event is in aid of club funds we hope this time for good weather and an enjoyable day for buyers and sellers alike! Gates open for sellers from 7.00am and for buyers from 8.00am.

In the JSW League we have had a reasonably successful time in the last month winning 4 matches but losing 2. We started with a 5-2 home win against Sowerby Flatts and the following week saw Leyburn play 3 matches in 3 days, all away from home. These resulted in two 6-1 wins at Masham and Dishforth before a disappointing 0-7 defeat at Northallerton. The following 2 weeks saw home games against Hutton Rudby, a 2-5 defeat, but a welcome 6-1 win in the return match with Dishforth.

Back to our own club competitions and on 20th July we held our latest Sunday Jumbles competition. Seemingly as always this year the competition resulted in clear cut winners and congratulations go to the worthy victors Peter Nicholas and Steve Cotter with 29 points. Joint runners-up with 18 points were Mervyn Buckley and Nimrod Wilkinson / Dennis Boyes, as well as David Halliday and Peter Walker.

Sat 2nd August saw Leyburn hold our annual Pairs competition for the Tyson Cup. Winners this year were Mervyn Buckley and Richard Carrington (5 wins from 6 matches) with Peter Walker and Mary King runners-up (3 wins, 2 draws).

Our Club Singles competitions which are played throughout the season are approaching conclusion and we will be holding our annual Finals Weekend on **Saturday and Sunday, 13th, 14th September** when 5 finals will be played. Anyone wishing to come along to watch any of these finals is, of course, welcome to do so.

Mervyn Buckley

Middleham and Dales Local History Group

**'History on Your Doorstep' Open Day –
Free Entry Saturday 27 September
2014 10.00am - 4.00pm,**

Middleham Key Centre
The Middleham and Dales Local History Group has arranged an Open Day at the Middleham Key Centre to showcase the work of a number of local history groups covering the Yorkshire Dales.

This event is **FREE** for everyone. Visitors are invited to drop in at any time to look round the displays and share their own knowledge with the various groups. These will include The Wensleydale Railway, Swaledale and Arkengarthdale Archaeology Group(SWAAG), the Nidderdale Project and Pott and Agill Study Group.

Dr Elaine Joynes will give a half-hour talk on "Coverham Abbey and the Lords of Middleham" at 10.30am in the Lady Ann Neville room.

Car parking is provided at the rear of the Key Centre and coffee and tea will be available throughout the day.

For further information please contact **Tony Keates on 640436** or email dotandtonyk@btinternet.com

Definitions!

Coffee, noun. The person upon whom one coughs.

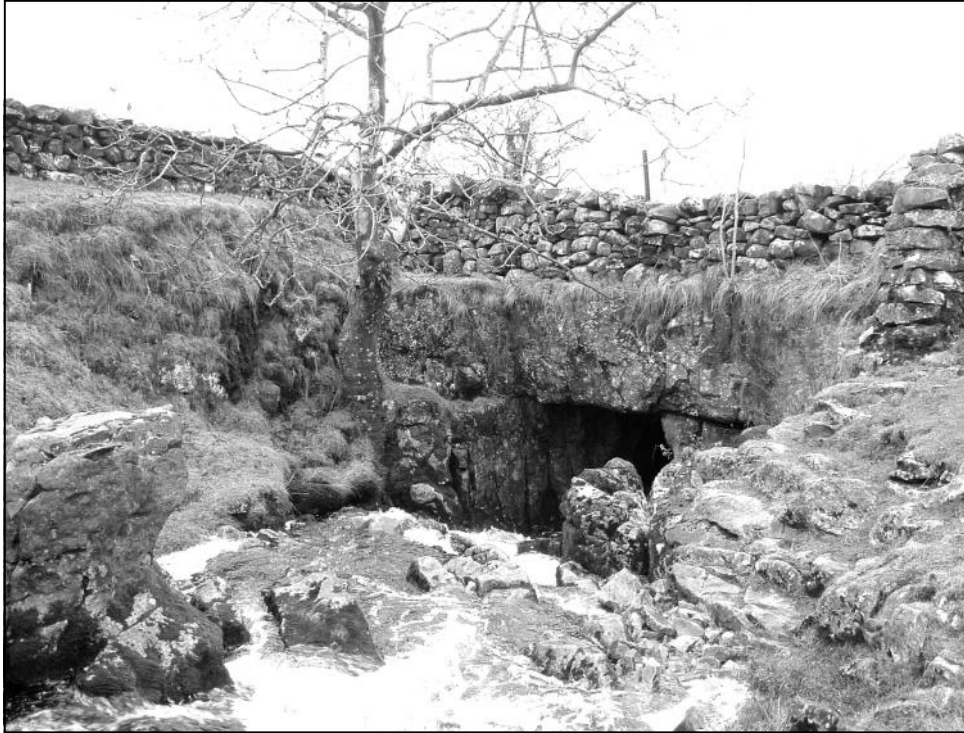
Flabbergasted, adjective. Appalled by discovering how much weight one has gained.

Willy-nilly, adjective. Impotent.

Negligent, adjective. Absentmindedly answering the door when wearing only a nightgown.

Flatulence, noun. Emergency vehicle that picks up someone who has been run over by a steamroller.

Balderdash, noun. A rapidly receding hairline.



*Mystery Picture.
Last month's was looking upstream from the top of Redmire Force on the river Ure.*

Upper Dales Healthwatch

Open session

Dr Jones has invited all patients to meet him and the new Practice Manager, Lynn Irwin at an Open Meeting **on Monday 22nd September** at the Yorebridge Community and Sports Centre in Askrigg. Patients are welcome to drop in any time between **6.30 - 8.30pm**. The Central Dales Practice would welcome any suggestions to help the Practice offer the best possible service to patients. Lynn is happy to demonstrate SystemOnline to anyone interested in using this for repeat prescriptions or for checking appointments. Please can you very kindly publicise this event and encourage all those with something to say to come.

Tea and Coffee will be available.

**Jane Ritchie,
Hon. Secretary
663385**

The Worlds Biggest Coffee Morning

In aid of Macmillan Cancer Support

Gayle Institute

**Friday 26th September
from 9.00am 'till noon**

Donations of cakes appreciated
phone **Natasha** on **667630**

Coffee In Aysgarth

You are invited to a
Coffee Morning at Jean Cockburn's
on **Saturday September 6th
from 10.00 to 11.30am.**
Proceeds for NSPCC

Coffee Morning

Thornton Rust Village Institute
**Saturday September 13th
10.00am to noon**
Admission £2.00; all welcome

What's On

September

- To Sept. 21st—'Seeing is Believing:
Tennants Auction Centre. See p.26
- 2 Hawes Drama Group reads 'Beyond a Joke'. Gayle Institute, 7.30pm.
- 2 St Andrew's Church Drop in for Coffee: 10.00am 'till noon, at The Rambles, Thornton Rust. **663626**
- 3 Muker Show, 10.00am to 5.30pm
- 3 Church Coffee Club: 10.30am to noon at Gordon Lodge, Redmire. **624171**
- 4 Guided walk: Falls, Freeholders and Flagstones; Meet Aysgarth Falls N. Pk. Centre, 1.15pm
- 4,11 'Seeing is believing' events: Tennants. See p.26
- 5 Great North Air Ambulance clothes collection. See p.23
- 5,15,16,29,30 Annual Special Sheep shows and sales: Hawes Auction Mart. See p.18
- 6 NSPCC Coffee morning in Aysgarth. See p.14
- 6 Coffee Morning and Bell Ringing in St Oswald's Askrigg. See p.3
- 7 Moorcock Show. See p.7
- 7 Working Barn Engines event. See p.24
- 7 Gayle Mill demonstration tours. 11.00am or 2.30pm. Admission for two-hour tour £12. Children free. Booking advisable: **667320**
- 7 Marsett Methodist Church Harvest 2.00pm
- 8 Yoga classes re-start. See p.9
- 9 YDNPA Planning Committee: Yoredale, Bainbridge. 1.00pm
- 10 "From Farms to Arms". Illustrated talk, Thornton Rust. See p.24
- 13 Coffee morning; Thornton Rust. See p.14
- 13 Carperby Village Show
- 13 Ride and Stride big sponsor day. See p.6
- 13,14 Aysgarth Station Rural Crafts Weekend 10.00am to 4.00pm. See p.11
- 13,14 HERITAGE OPEN DAYS
- 14 Hardraw Scar Band Contest. See p.5
- 14 Aysgarth Methodist Church Harvest. 6.30pm: Songs of Praise
- 14 Hawes United Football Club, annual sponsored walk. See p.8
- 14 Gayle Mill blacksmithing course. See p.16
- 17 Hawes Art Group restarts. See p.10
- 17 Hawes Gala AGM. 7.00pm. See p.3
- 19 Stalling Busk Harvest Supper and talk. See p.17
- 19 'Ronald d'Arcy Fife of Nunnington Hall, Soldier and Sportsman'. 7.30pm. DCM Friends lecture
- 20 "Missing Time" live in the Fountain Hotel, Hawes
- 20 W.I. Show in the Market House, Hawes
- 21 West Burton Methodist Church Harvest 10.45am
- 21 Songs off Praise: 6.30pm with the Askrigg Singing Group
- 21 Table Top sale for Hawes Primary School in the Market House
- 22 Upper Dales Health Watch Open Session. Yorebridge. 6.30 to 8.30pm
- 23 Yorkshire Dales Millennium Trust, Supporter Lunch at Tennants. See p.17
- 24 Family History Group. 7.30pm. See p.10
- 26 Bolton Castle Medieval Banquet; 7.30pm. **623981** See p.27
- 26 Macmillan Biggest Coffee Morning: Gayle Institute. See p.14
- 26 Young Voices Concert for St Margaret's Church restoration. See p.3
- 27 Macmillan Biggest Coffee Morning, Thoraby. See p.22
- 27 Middleham and Dales Local History Group: Free entry open day. See p.13
- 28 Gayle Methodist Church Harvest. 2.00pm

Amala Treasurer Needed

The Amala Children's Home and School, the charity well known and supported by Wensleydale families, is looking for a Treasurer.

The Committee meet just three times a year and the role of Treasurer is well supported by the Chairman and Trustees.

For more information please contact Mark **Ashcroft c/o The Wensleydale School or Vanda Hurn c/o Bainbridge Vets, 650263**

Doctors' Rotas Supplied by the Health Centre

AYSGARTH SURGERY ROTA Wb - week beginning											HAWES SURGERY ROTA Wb - week beginning										
Wb	Sep 1st		8th		15th		22nd		29th		Wb	Sep 1st		8th		15th		22nd		29th	
Day	am	pm	am	pm	am	pm	am	pm	am	pm	Day	am	pm	am	pm	am	pm	am	pm	am	pm
Mon	FJ	FJ	B	B	W	W	BW	BW	WF	WF	Mon	BW	BW	F	F	FB	FB	FJ	FJ	JB	JB
Tues	BW	BW	F	F	B	B	FJ	FJ	J	J	Tues	J	JF	B	B	W	W	BW	BW	WF	WF
Wed	F	F	B	B	F	F	J	J	F	F	Wed	J	J	F	F	B	B	F	F	B	B
Thur	J	J	W	W	B	B	F	F	B	B	Thur	B	B	B	B	F	F	B	B	J	J
Fri	B	B	F	F	F	F	B	B	J	J	Fri	F	F	W	W	J	J	J	J	F	F
Doctors: B-Brown, F - France, J - Jones, W - West, C - Closed Morning Surgery: 9.00 - 10.30 am no appointments Afternoon Surgery: 4.00 - 5.30 pm appointment only For appointments and all enquiries ring 663222											Doctors: B-Brown, F - France, J - Jones, W - West, C - Closed Morning Surgery: 8.45-10.15am Tues till 10.45 no appts Afternoon Surgery: 5- 6.00pm Tues 1.30-4.00 appts only For appointments and all enquiries ring 667200										

DCM What's On



Exhibitions:

Yorkshire Dales Journeys:

An exhibition celebrating the 60th anniversary of the YDNP and the journey of the *Tour de France 2014* through the Dales until the end of September.

The Textile Art Pool are displaying and selling patchwork, quilting and embroidery. "All Sorts in Stitch" is in the Waiting Room.

September

- 4 YDNPA Walk- Falls, Freeholders and Flagstones.
- 6 Sausage Making: 10.00am to noon and 1.30 to 3.30pm. Make your very own sausages from local produce. £10. Booking required
- 7 YDNPA Walk - Kisdon Classic Circular walk 6.5 miles 1.15pm at the Farmers Arms, Muker
- 13,14 Heritage Open Days. 10.00am to 5.00pm. Free entry to the Museum for everyone as we celebrate national annual Heritage Open Days.
- 19 Steve Erskine: Ronald D'arcy Fife of Nunnington Hall, soldier

and sportsman. As part of the friends of the museum lecture programme. £2.

- 28 Pathfinder course: Advanced. 10.00am to 4.30pm. £10 Booking required

October

- 5 Join us to celebrate UK Grandparents Day
- 7 7.30pm Lippy Logic presents an evening of comedy and drama in aid of St Margaret's Church. Tickets £8 from the Sweet Shop or Whites of Wensleydale. See p.6

YDNPA Walks. All walks cost £3 per adult, children under 16 free. Check with DCM for booking. For further information on any activity- phone 666210

Gayle Mill

Sunday September 14th 10.30am to 4.30pm

An introduction to and advanced
blacksmithing course
£85 including lunch and materials
Booking essential: **667320** or
www.gaylemill.org.uk

Heavens Above

Summer, alas, is nearly over! After the equinox on September 23rd the nights become longer than the days and Autumn, with its damp, unsettled weather, officially returns. There's a seasonal change in the evening sky too. The three bright Summer Triangle stars – Vega, Deneb, and Altair –



though still high in the south-west, are already slipping

westwards making way for the autumnal star patterns coming in from the east. By the middle of the evening towards the end of the month Autumn's main constellation, Pegasus the Winged Horse, is well up in the south – the four stars forming its famous Square are unmistakable. Beneath the Square the sky is filled by the large, dim constellations of the 'Celestial Water' – Pisces the Fishes, Aquarius the Water-bearer, Cetus the Whale, and the Sea-goat Capricornus. In the northern sky Capella is gaining altitude in the east as Vega sinks towards the west. Arcturus – so prominent during the spring and summer months – has almost faded away into the evening twilight.

The Plough is at its lowest right on the northern horizon and the 'W' of Cassiopeia almost overhead. Late evening sees the beautiful Pleiades star cluster climbs into view in the north-east – a sure sign that the year's on the turn.

Early Autumn is a good time to try and pick out a less well-known constellation with watery connotations, Delphinus the Dolphin. You'll find it just to the left of Altair, the bottom-most star of the Summer Triangle. It looks a bit like one of these newfangled pennants on bendy supports that seem to be everywhere these days. The four stars outlining the creature's body form a distinct diamond shape popularly known as Job's Coffin though nobody seems to know why. In Greek mythology dolphins were seen as

messengers of Poseidon, the Sea God, and this particular one is credited with rescuing the poet and musician Arion from drowning.

Look out for the Harvest Moon this month. It's the Full Moon nearest the autumn equinox and falls on September 9th this year. Normally the Moon rises roughly 50 minutes later each night but around the time of the equinox its path is almost parallel to the horizon and as a consequence the night-to-night difference is only about 30 minutes. As a result the Moon rises just after sunset for several nights in a row – a great boon to farmers at harvest time in days gone by allowing them to work much later into the evening. October's Full Moon for similar reasons is often called the Hunter's Moon. Have clear skies!

Al Bireo

YDMT Supporter Lunch Tennants, Leyburn

Tuesday September 23rd from 10.00am

The Yorkshire Dales Millennium Trust is holding this open event with a free lunch for all supporters to enable them to hear what the Trust has achieved as a result of legacies and donations. There will also be an opportunity to find out more about the auction house and browse the exhibitions in the afternoon.

Do You Like to Sing?

Askrigg Ladies Sing for Pleasure meet second and fourth Mondays in the back room of Askrigg Village Hall, **7.30 to 8.30pm**.

All ladies are welcome; we are not a choir but a group of thirty jolly ladies who love music. No experience is necessary, no need to read music. Just come along.

For more information: **Diana Hartley 650245**

Stalling Busk Schoolroom

Harvest Supper

Friday September 19th , 7.30pm

Slide show by Bryan Peacock

All welcome

In Praise of Aprons

I don't think our kids know what an apron is. The principal use of Grandma's apron was to protect the dress underneath because she only had a few. It was also because it was easier to wash aprons than dresses and aprons used less material. But along with that, it served as a potholder for removing hot pans from the oven.

It was wonderful for drying children's tears, and on occasion was even used for cleaning out dirty ears.

From the chicken coop, the apron was used for carrying eggs, fussy chicks, and sometimes half-hatched eggs to be finished in the warming oven.

When company came, those aprons were ideal hiding places for shy kids.; and when the weather was cold Grandma wrapped it around her arms.

Those big old aprons wiped many a perspiring brow, bent over the hot wood stove. Chips and kindling wood were brought into the kitchen in that apron.

From the garden, it carried all sorts of vegetables. After the peas had been shelled, it carried out the hulls.

In autumn, the apron was used to bring in apples that had fallen from the trees.

When unexpected company drove up the road, it was surprising how much furniture that old apron could dust in a matter of seconds.

When dinner was ready, Grandma walked out on to the porch, waved her apron, and the men folk knew it was time to come in from the fields to dinner.

It will be a long time before someone invents something that will replace that 'old-time apron' that served so many purposes.

Grandma used to put her hot baked apple pies on the window sill to cool. Her granddaughters put theirs on the window sill to thaw. They would go crazy now trying to figure out how many germs were on that apron!.

I don't think I ever caught anything from an apron - but love.

Hawes Auction Mart 2014 Special Sheep Sales

Each autumn, in addition to the normal activities of the mart, Hawes Auction Mart holds a number of very large sheep sales. These are attended by dealers and farmers from all quarters of the country and are of major economic importance to the Upper Dale. The dates of the September sales (and early October) are detailed below.

Friday 5th September

Catalogued Show and Sale
Of 2,500 Store Lambs.
Sale at **10.00am**

Monday and Tuesday 15th and 16th September

Great Annual Two Day Show and Sale of 32,000 Mule Gimmer Lambs. On behalf of the North of England Mule Sheep Association.

Judging **8.00am. Sale at 9.00am** each day.

Monday 29th September

15,000 Mule, Masham and Continental X Gimmer Lambs and Shearlings.

Sale at **9.00am** followed by a Catalogued Sale of Store Lambs.

Tuesday 30th September

3,000 Crossed Swaledale and Dalesbred Ewes. Sale at **Noon.**

300 Registered and Unregistered Bluefaced Leicester, Suffolk, Texel, Beltex and North Country Cheviot Rams and Ram Lambs at **1.00pm**

Thursday 2nd October

Prize Show and Sale of 1,000 Registered Bluefaced Leicester Rams, Ram Lambs and Females for the Bluefaced Leicester Sheep Breeders Association.

Judging **7.15am. Sale at 9.00am.**

Police Report

As I am writing this the final bank holiday of the year (prior to Christmas that is) is fast approaching which means summer is almost over! It seems to have flown by this year and weather-wise I do not think we can complain too much.

Local crimes over the last month have mainly been break-ins to sheds and outbuildings. The offenders have been looking for powered garden equipment, tools and machine tools. At least one such crime was to an insecure shed. Please get "sheducated" (yes it's a "buzz" word) and fit good quality hasps and padlocks, or mortise locks to your outbuildings. It is no good storing hundreds if not thousands of pounds of equipment in your shed if it is secured by only a thrupence ha'penny lock and hasp. Even better fit a shed alarm as well. They can be purchased from DIY stores for around the same price as a decent padlock.

We keep getting sporadic thefts of dogs within the dales. This time it happened in Swaledale where two trained working dogs were stolen. For those of you who have trained working dogs just be wary of those who seem to be paying unusual interest in your animals when you are attending events.

Although Upper Wensleydale has not had a quad bike stolen for several months now (touch wood) please do not become complacent. We are conducting active patrols to try and keep this crime to a minimum but one machine was stolen in Upper Swaledale in the last month. This has been recovered in the Peterlee area and three males were arrested. However the areas around Northallerton and Thirsk have been hit for this type of crime and it continues apace elsewhere. It is only a matter of time before they start targeting our patch again so please keep them safely locked away when not in use and don't leave the keys in them.

A strange occurrence happened in Hawes Market Place on Sunday the 17th August.

A male was using his mobile telephone when two females aged around 15 to 16, one with dark hair and one with long blonde hair, went past him and stole his phone out of his hands. As it happened early evening, sometime around 6.30 to 7.00pm, I suspect that there will have been numerous witnesses. If you saw this please get in touch. I am wondering if this was done as a bit of a prank and if you were involved it would assist your case if you came forward and owned up.

Andy Foster PC826
Leyburn Safer Neighbourhood Team
Safer Neighbourhood Police Officer
for Upper Wensleydale
Tel. 101
SNTLey-
burn@northyorkshire.pnn.police.uk

British Humour is Different

These are classified ads which were actually placed in U.K. Newspapers:

FREE YORKSHIRE TERRIER
8 years old, Hateful little bastard. Bites!

FREE PUPPIES
1/2 Cocker Spaniel,
1/2 sneaky neighbour's dog

JOINING NUDIST COLONY!
Must sell washer and dryer £100.

WEDDING DRESS FOR SALE
Worn once by mistake.
Call Stephanie

And the WINNER is...

FOR SALE BY OWNER
Complete set of Encyclopedia Britannica,
45 volumes. Excellent condition
£200 or best offer.
No longer needed, got married,
wife knows everything

BAWB School Collaboration

September will see another development in the Askrigg/Bainbridge Schools Collaboration. West Burton School will be joining the collaboration, under the leadership of Executive Head Teacher, Charlotte Harper. However, West Burton will be a 'stand alone' school in the collaboration whilst Askrigg and Bainbridge are going to launch into a new arrangement sharing sites.

Children will continue to be registered at the school of their choice, but nursery and infant children from both schools will be taught on the Bainbridge site and the junior children will be taught on the Askrigg site. This will involve registration at their 'home' schools and then a short journey by bus between the schools. At the end of the day, the children will all be returned to their home school to take part in daily collective worship and celebration assembly. There will be termly days when children from all three schools will get together for a BAWB activity day as they have for the past few years. There will also be visits and activities at the 'home' school to ensure that each school can maintain its own identity.

During the summer holidays a lot of work has been undertaken at Bainbridge School to refurbish and re-develop the nursery. There is now a modern, up-to-date facility offering the best of current facilities and equipment for the children.

Staff have been working with experts from 'Early Excellence' who are specialists in the field of early years education and now have the environment and facilities to provide the children with a superb range of learning experiences. Nursery sessions will run five mornings a week and there is also an optional charged lunch hour service offering play and lunch to nursery aged children. We are delighted that there will also be a bus service running between Bainbridge School and Dalesplay in Hawes

for the afternoon for those who wish to extend their childcare/nursery session. If you are interested in registering your child for the nursery, or would like to come and visit, please contact the school.

In addition to all these changes, we are delighted to be able to offer breakfast and after school clubs for the children at their home school. The breakfast club operates from 8.00am in the morning and is available to all children, including nursery. Transport can then be provided to their teaching school, where appropriate for the start of morning lessons. A range of after schools clubs will launch this term and details will be issued in due course, but will include photography, sports and a church themed club.

Lots of change, but hopefully better provision for our children. Please contact the school if you would like to come along and have a look.

K.P

Wensleydale Railway

ANOTHER PEAK SEASON

Efforts with Bittern, Tour de France and the Diesel Gala (our best ever) have resulted in a stunning profit of well over £20k, an excellent contribution and another step in improving our finances. It remains only a step, but it does mean we are moving slowly in the right direction. Thank you all once again for your hard work on these events.

There is more big news in that work on the halt at Northallerton West is now underway. I am very pleased to announce that John Graham, who masterminded the design and planning stage, has agreed to return to coordinate the build, ably assisted by Phil Smith and Frank Clough.

Planning is well advanced and work on site has already started. Work is also going ahead to provide more diesel multiple units (DMUs) to allow for the service from Leeming to Northallerton.

Prunings

A personal take on Plants, Propagating and other related rural ramblings.

The weather breaks with wind and rain and we look back with regret, feeling as if we have had months of Summer; is it all over? Not so, the chances are there will be more warm sunshine.



A plethora of jobs present themselves in late summer. For someone like me who will always prefer to sit and soak up the scents and the colour, there will have to be a modicum of selection as I always run out of time. I have started on some grasses. I want more plants, but not absolutely everywhere. My solution is to dig up a favourite, cut off the seed heads before the wind has distributed them too widely, and then split the plants with a sharp knife. *Health and Safety* borne in mind, I keep an old kitchen knife, (quite a big one as I have purchased better quality equipment over the years). It lives, well sharpened, in a cardboard sheath, and I always wear strong leather gloves when using it. It remains the best way I know to slice through congested root balls. Lots of perennial plants benefit from division, although many are better left until spring when the new growth appears. Grasses, however need to be done whilst they are still growing strongly. Simply chop them up, replant what you want, pot up the rest, water well and keep in a sheltered place until you decide where to put them, or who to give them to!

It's an excellent time just now to dry herbs from the garden. They will soon start to lose quality and flavour, so pick young fresh

growth and hang the stems upside down in paper bags in a warm airy place. They don't take very long and must be stored in airtight jars out of the light. This method works well for lots of easy to grow herbs, but I usually store some in the freezer as well because that way I can retain colour. Parsley works particularly well by this method. I chop the leaves, pack them into ice cube trays, top up with a drop of water and freeze. When solid I take them out of the trays and keep in sealed plastic bags to stop them drying out. One of my favourite veg. dishes is broad beans with lots of home-made fresh green parsley sauce. In the winter months the frozen parsley has much better flavour than the supermarket variety which has been grown under glass. Herb butter is another storage method which freezes well, and of course Dill and Coriander will have lots of seeds which keep in airtight jars.

I have been considering colour for next year: Rudbeckia Goldsturm is always wonderful, and reliable enough to grow from seed. However, be warned, rabbits love them. I once had dozens of small plants overwintering in the polytunnel, and the rabbits got in when my back was turned. They even emptied the pots to get at the roots! Adequate preventative measures are called for.

Some years ago I bought a Hydrangea from Levens Hall Garden in Cumbria. It didn't look much at the time, but I have kept it in a large tub and this year it has rewarded me with wonderful panicles of lilac flowers. Oh how I wish I could still find the label. On the other hand – time to try some cuttings!

Good luck! And whatever you grow, take time to enjoy it.

Rose Rambler.

Great British High Street Award

Hawes has put in a bid for this award, following the huge positive feedback following the town's efforts during the preparations for the Tour de France.

The application is to be based on Le Tour.

What a Guy!

Ruth Guy from Warren Wood in Marrick rears prize winning sheep - she recently won Reserve Male Champion with her North Country Cheviot at the Yorkshire show, she also won 1st place with her Ram Lamb. I was told Ruth may be difficult to pin down to interview and no wonder. She manages to fit in showing sheep with her other jobs which include running a sheep farm, keeping horses, letting a couple of holiday cottages, hairdressing, show judging and being a part time care assistant! I eventually caught up with Ruth just before her shift at Sycamore Hall in Bainbridge.

She told me she first got into showing when her father gave her two Jacobs sheep when she was eight and she entered them into the Reeth show and amazingly won a prize and has never looked back. Ruth admits she gets a real kick out of competing which is very addictive. She has been showing for over fifty years now and loves winning prizes, but mainly she just enjoys the whole show atmosphere, catching up with friends and meeting new people. The preparation is hard work and usually takes about two hours per sheep - clipping, washing, dipping and brushing but it's all worth it when you proudly pin a rosette to the pen.

Amazingly she told me that fashions change even in the showing world so you have to keep up with what the judges are looking for. You have to learn how to clip the wool to enhance particular features such as a long neck, straight back, long legs etc. They even dip the sheep to dye the wool which can go horribly wrong just before show day if you get the wrong strength!

She has recently been enjoying judging the young handlers section at local shows. She feels it is really important that young farmers are encouraged to enter their livestock as it's a great way of learning handling skills. Things do go wrong however even for the most experienced of handlers. At the Stokesley Show Ruth's ram managed to break down a hurdle and escape into the main show ring. She

chased after him, narrowly missing the horses, upsetting quite a few judges and eventually managed to get him back into the pen. By this time they were both covered in horse manure and the ram was so exhausted it refused to stand up when it came time to enter their category! Learning good techniques of showing does help when it comes to selling sheep too, Ruth said if you know how to present the breed well it can make all difference to the price at market.

Ruth will be at all the upcoming shows, Wensleydale, Reeth, Westmorland County Show, Stokesley, Pateley Bridge, and the last event of the showing season, the Masham sheep fair. So look out for Ruth Guy, she will be the one with a great big smile on her face, lapping up the atmosphere and maybe winning a few more prizes

K.J.

Aysgarth Garage Now Open!

The fully refurbished garage, country store and fuel forecourt is now open seven days a week **from 7.00am to 7.00pm**. The services on offer include grocery, snacks, newspapers, drinks and ice-cream.

The garage has a full up to date workshop which carries out servicing and repairs including diagnostic and MOT testing and there is a tyre bay.

A DIY jet wash and vacuum facility is open 24 hours a day all year. For further details please telephone **663900**.

Opening Bank Holiday Weekend, we wish Kathryn and Mark Oyston every success in the future.

S.E.D.

Macmillan Biggest Coffee Morning

10.00 am- 1.00pm

Thoralby Village Hall

Saturday September 27th

All contributions of cakes or raffle prizes gratefully received

Eighty Not Out

The Newsletter has commented on a number of occasions about the individuals who through voluntary work keep the wheels oiled for a whole range of Upper Dales organisations and activities. A prime example of this must be Sue Foster of Hardraw.

Having just celebrated her 80th birthday, Sue shows no signs of 'slowing up' as she continues to pursue her wide range of interests and activities. Born in Teesside, Sue spent most of her childhood in the Lake District before training as a nurse in London, emigrating to Canada with her husband and then returning 3 years later with two children to live in Kent.

Here Sue had two more children and set up her own Bookkeeping business until when the children left home she decided to 'retire' back 'up north'. Having spent an earlier holiday in Wensleydale she felt that this would be an excellent place to retire to and found a cottage in Hardraw in 1989.

The cottage needed substantial building work undertaking and in order to 'escape from the builders' noise and clutter' Sue popped into Bob Tunstall's Accountancy offices in Hawes to see if they needed any short-term help with bookkeeping. She stayed there for 10 years before finally 'retiring' again – although she still 'does the books' for one local organisation.

In 1997 Sue was persuaded to become one of the two Churchwardens for the St Mary and St John parish church which happened to be just across the road from her cottage. She has held this voluntary post for 17 years – in addition to being the Church Treasurer.

The second 'string' to Sue's volunteering bow occurred about the same time when she agreed to become the Secretary of the Friends of the Dales Countryside Museum in 1996 – a post she held for 8 years before becoming Chairman of 'the Friends' in 2004. The Dales Countryside Museum is fortunate in that it is supported in both its premises and staffing by the National Park but the Friends still play a vital role in helping to secure additional funding to help the Museum fulfil its role in education and enlightenment to Dales locals and visitors

alike.

Some Newsletter readers may know Sue best through her beautiful soprano singing voice. She was a member of a choir in Kent and finding a good choir in Wensleydale was one of her priorities when she moved up here. She eventually settled on the Aysgarth Choral Society (now the Aysgarth Singers) for whom she has been a soloist on numerous occasions over the last 20 years. Sue also enjoyed singing in most of the musicals that John Cockett directed in Hawes in the 1990s.

So what does Sue do in her 'spare' time. She walks. She developed a love of walking alone in the hills and dales during her childhood in the Lakes and to this day there is rarely a day when she doesn't climb in her car and set off for a 3 or 4 mile hike somewhere in the Upper Dales – she must know every footpath there is!

Her 80th birthday was in July and her family organised a surprise party for her in Hardraw with all four children and seven of her ten grandchildren managing to attend.

We wish her continued good health and hope she can continue to be such a prominent figure in the Dale for many years to come.

B.M.C.

Great North Air Ambulance Clothes Collection

Friday September 5th 2014

Yorebridge Sport and Fitness at the Wensleydale Centre, Askrigg is having a clothes collection for the Great North Air Ambulance.

We would be very grateful for any clothes, shoes, bags (including suitcases), belts, towels, curtains, bed linen (not duvets or pillows). Please bag them up and leave them outside the centre front door (next to the blue outdoor store) from Wednesday September 3rd onwards up to 1pm on Friday 5th.

Thank you for your support of this worthy cause.

Any queries just contact us on **650060** or email at admin@yorebridge-sport.co.uk

Country Shows

Village or country shows are held during the summer months throughout the country and no matter where they take place, the format is much the same: neatly arranged rows of vegetables, colourful floral displays, handicraft items and mouth-watering displays of cakes and pies.

My earliest memory of a local produce show is my mother's beaming face when she learnt she had won a prize: for a last-minute 'arrangement' of marigolds in a milk jug'. The show in question was held in the early 1950s and took place in the large wooden shed usually occupied by a couple of shire horses and a small herd of dairy cattle. I do not recall any special effort being made to sanitize the shed for the show.

Many years later, and in another county, the venue for our village show was more up-market. The local primary school had a good-sized hall for the display of exhibits, a kitchen from which the local WI served teas, and a large playing field with space for children's activities and a few stalls. The village system there was based on one large village surrounded by a necklace of smaller villages. At show time this engendered much rivalry between all the participating villages and led to loud cheers when the smaller villages won cups. Most importantly, it was the one event each year when all the adjacent communities came together for a social occasion.

Now that we live in North Yorkshire, our local show is the Thornton Rust Country Show. Initiated as a community event 32 years ago, it still serves its purpose in bringing the village together for an enjoyable and sociable occasion. Minor disasters, such as an exploding ginger beer exhibit one year, add hilarity to the day whilst the set recipe for a cake can produce unexpected results. Some years ago everyone's fruit loaf failed to cook as anticipated and about a dozen fruit bricks were laid out for the judge's inspection. Another year the passion cakes did not rise to the occasion and this year, no-one had the required large size of cake tin so an assortment of cake sizes were on offer for

the judge's scrutiny. Fortunately the show is a light-hearted event and we can all laugh about such misadventures but I pity the judges who have had to taste some of our efforts.

Much work goes on behind the scenes organizing country shows, whether they are large or small, and we should be grateful that there are people who are prepared to give their time to the community in this way. And their work would be to no avail if exhibitors did not enter the competitions and visitors did not come to admire the exhibits. Thank you to you all!

J.W.T.

From Farms to Arms

Wednesday September 10th, 7.30pm

An illustrated talk in Thornton Rust Village Institute to remember the outbreak of WW1 is entitled "From Farms to Arms—Catterick Garrison and Training Area Now and Then".

It should be a very interesting and informative evening.

All welcome; refreshments; Admission £5.00

Event: Working Barn Engines

At Maresfield Cottage, Mill Lane, Askrigg—Opposite the old school from **2.00pm, September 7th** Cake stall, book stall, plant stall and raffle Entrance £1.50 includes tea/coffee and a cake. In aid of St Teresa's

Drop-off points and contacts

for news, articles, reports, letters, what's on dates, competition entries, suggestions and comments:

Hawes:	Alan S. Watkinson, Burnside Coach House.	667785
Gayle:	Sarah Champion 23, Little Ings	667006
Bainbridge:	Sylvia Crookes, 3, Bainside	650525
Askrigg:	Rima Berry, 8 Mill Lane	650980
Carperby:	Margaret Woodcock, Bella Cottage	663488
West Burton:	Nadine Bell, Margaret's Cottage	663559
Aysgarth:	Hamilton's Tearoom	663423
Redmire:	see Carperby above	
Thoralby:	Sandra Foley, Shop	663205

Calendar Celebrates The Yorkshire Dales



The Yorkshire Dales has provided the inspiration for a charity calendar that will raise money to help protect and enhance this precious landscape, ensuring that it remains a special place for future generations to enjoy.

The Yorkshire Dales Millennium Trust's 2015 calendar features some iconic Dales' scenes including Malham Cove, Scaleber Falls, Ingleborough and Pen-y-ghent to name just a few. The images were brought together through a Facebook photography competition which the Trust ran.

More than 150 images were entered into the competition by photographers from the local area as well as visitors to the Dales from all corners of England, plus Scotland, Wales and as far away as The Netherlands and Tokyo.

Professional Settle-based photographer, and long-standing supporter of YDMT, Steve Finch had the difficult task of choosing just one overall winner. After much deliberation a striking shot of the limestone pavement near Ingleborough, by Nigel Hunter from Lancashire, was crowned the winner.

Steve said: "Judging other people's photography to select a winner from such a strong field of entries is difficult, but 'there can be only one!' I chose the winning entry based upon technical proficiency (the photography was not a lucky accident), and its artistic appeal. The location is popular with

photographers, however this photograph held my attention, had treated the foreground very well and, at a time when people tend to 'over-do' software enhancements, was brave enough to be presented as an honest Black & White image. It is a simple, but powerful record of the spirit of the location."

As well his winning photograph featuring in the charity's 2015 calendar, Nigel was awarded a prize hamper of tasty Yorkshire produce, courtesy of Yorkshire Cottages.

Nigel said: "I love all aspects of photography and spend many hours taking photos and editing them. Landscape photography is my first love, and the UK has the best scenery in the world. Every time you go, you'll see something different and I find it a great honour to be able to showcase my adventures."

Sarah Brewer, Fundraising and Communications officer at YDMT, added: "Our 2015 calendar is a real team effort with the Yorkshire Dales at its heart. It is inspired by the Dales and has been judged, designed and printed by experts in the local area to support this unique place. I'd like to thank all the talented photographers who shared their photographs with us, along with Yorkshire Cottages, Steve Finch Photography and Fever Digital for all their help in producing this lovely calendar. We are thrilled with the finished result."

All money raised through the sale of the calendar will play a vital role in helping YDMT to continue important projects across the Yorkshire Dales and beyond, including restoring wildlife habitats such as broadleaf woodlands and wildflower hay meadows, education and outreach work, improvements to access, and supporting local community groups and businesses.

The calendar is available to buy online priced at £10 (including UK delivery) via www.ydmt.org/shop or by calling **015242 51002**.

Access Forum Needs New Members

A group that helps to improve public access and recreation in the National Park is on the lookout for new members.

There are currently eight vacancies on the independent Yorkshire Dales Access Forum, which provides guidance and advice on ways to improve and manage public access and opportunities for open-air recreation in this beautiful landscape.

Mohammed Dhalec the National Park Authority's Access Development Officer, said: "The forum's job is to work with individuals and organisations who live and work in the 680 square miles of the National Park and those who use or visit the area for leisure and enjoyment, and to advise on ways to improve access and recreation in this special place.

"This can be anything from looking at mobility issues to suggesting an upgrade of a specific footpath. The members also respond to consultations on a range of documents and strategies issued at local and national level."

The forum members should represent a balance of interests ranging from land management and agriculture to local business and outdoor recreation, although there is currently under-representation in land management and farming.

The forum meets three times a year, but some members also sit on a variety of advisory groups that meet regularly to consider specific issues in more detail and report back accordingly.

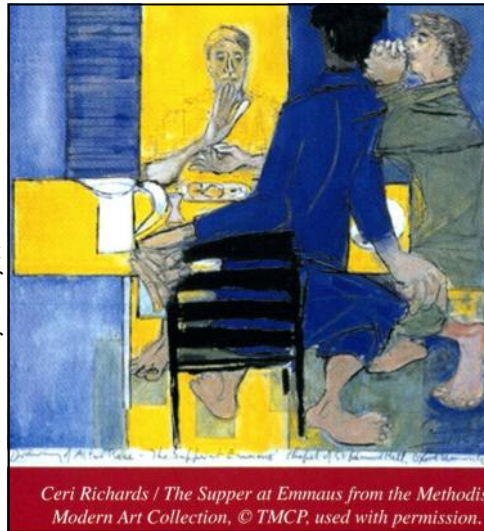
Chairman Alistair Thompson said: "Access forums were set up to improve access in the countryside and to help resolve potential conflicts between those who own and work the land and the people who use it for recreation. For that reason, it is important that the members have a range of interests that enable the forum to represent a balanced view."

The deadline for applications is

November 7th, and anyone who would like to be considered can obtain more information by contacting **Mohammed Dhalech on 652363** or by email at

accessforum@yorkshiredales.org.uk or by visiting the National Park Authority's website at www.yorkshiredales.org.uk/ydaf.

Tennants: Seeing is Believing



This free exhibition at Tennants continues until **September 21st, 8.30am to 5.00pm**. Over 40 works including some by well-known artists.

A first for the new room! Sunday August 17th the splendid new auditorium was used for the first time as about 200 people assembled for a service with the Leyburn Band to welcome the Art Collection.

Special events.

Lecture by Barbara Morden, cultural historian, lecturer and writer in art history and literature. **Thursday September 4th, 7.00pm**

Lunchtime tour through the exhibition by Rev. Graham Kent. **Thursday September 11th.**

How Many of These Handy Tips Did You Know?

A sealed envelope: put in the freezer for a few hours, then slide a knife under the flap. The envelope can then be resealed!

To remove old wax from a glass candle-holder: put it in the freezer for a few hours, then take the holder out, turn it upside down and the wax will fall out.

Crayon marks on walls: a damp rag dipped in baking soda; comes off with little effort.

Blood stains on clothes: just pour a little hydrogen peroxide, and wipe off every drop of blood.

Vinegar: will get outside windows really clean. Don't wash them on a sunny day– they dry too quickly and will streak.

To clean artificial flowers: pour some salt into a paper bag and add the flowers. Shake vigorously and the salt will absorb all the dust and dirt.

Spray your 'Tupperware' with non-stick cooking spray before pouring in tomato-based sauces and there will be no stains.

Cure for headaches: take a lime, cut it in half and rub it on the forehead. The throbbing will go away.

Use air-fresheners to clean mirrors: it does a good job and leaves a lovely smell to the shine.

Clean a vase: to remove a stain from the bottom of a glass vase etc. fill with water and drop in two Alka-Seltzer tablets

September at Castle Bolton

Friday 26th September (from 7.30pm)

Medieval Banquet

Step back in time and experience an authentic Medieval banquet at Bolton Castle. Enjoy a medieval feast including Vegetable Pottage, Hog Roast and Fruit Posset with Old English Shortbread set in the atmospheric setting of the Great Chamber where guests have been entertained for over 600 years.

A medieval feast was never just about food! It's a spectacle and an entertainment as well... With fanfares, comic tales and - most importantly - magnificent music, Trouvere Medieval Minstrels will transport you back to the middle ages for a night of medieval delights.

Tickets: £25.00. Booking Essential **623981**

Saturday 27th – Sunday 28th September (Noon-4.00pm) Medieval Minstrelsy with Trouvere

Discover the sweet sounds of medieval music-making as Trouvere visit the castle. Normal Admission Charges Apply

Cycle Recycling

Neil, at Low Mill in Bainbridge, who made all the yellow bikes is happy to take back any unwanted ones.

His intention is to make a peloton of hundreds. It will be interesting to see where it ends up being sited.