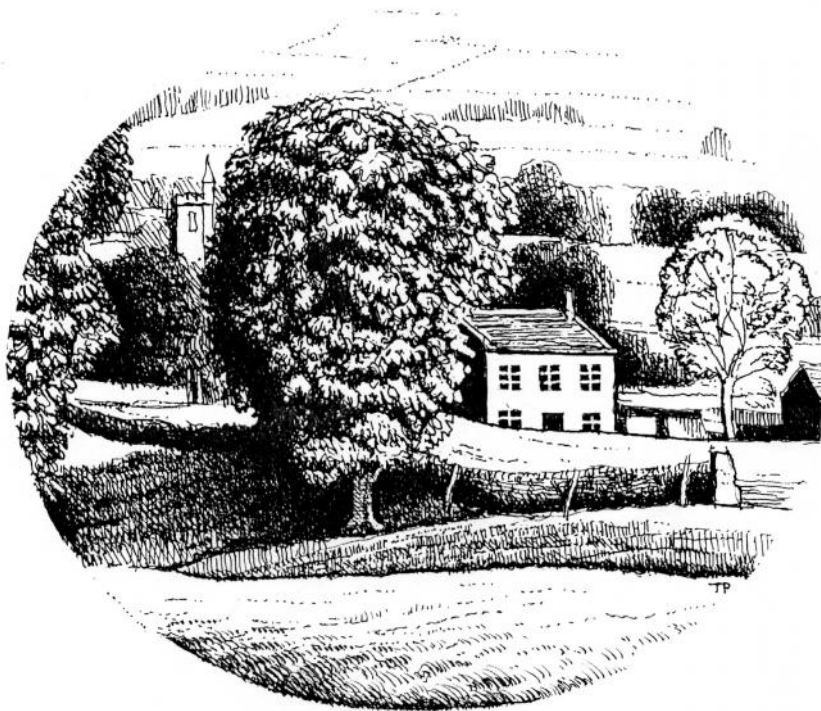


THE UPPER WENSLEYDALE NEWSLETTER

**ISSUE 192
June 2013**

**Donation please:
30p suggested or more if you wish**



By Tom Purvis

Published by

The Upper Wensleydale Newsletter
Burnside Coach House,
Burtersett Road, Hawes DL8 3NT

Tel: 667785

e-mail: alan.watkinson@virgin.net

Printed by Wensleydale Press

Committee: Alan S.Watkinson,
Barry Cruickshanks (web), Sue E .Duffield,
Karen Jones, Alastair Macintosh, Neil Piper,
Janet W. Thomson (treasurer), Peter Wood

Final Processing: Sarah Champion, Adrian
Janke

Postal Distribution: Derek Stephens

**Upper Wensleydale
Newsletter**

**Issue 192— June 2013
Features**

Editorial 3

Dentist visit 7

Doctor's Rotas 25

Handbells in Askrigg 9

Hidden Secrets Trail 14

Shires etc 18

Surgery News 17

What's On 23

Plus all the regulars

PLEASE NOTE

This web-copy does not contain the commercial
adverts which are in the full Newsletter.

As a general rule we only accept adverts from
within the circulation area and no more than one-
third of each issue is taken up with them.

Advertising

Boxed adverts: £6, £12, £18

There is a big reduction for six issues or more,
so for six issues the totals are:

£25, £50 or £75

Greetings etc. £2.00

What's ons (non-commercial) are free

Contacts for adverts:

For Hawes area and westward:

Barry Cruickshanks, Ashfield, Hardraw: 667458

For elsewhere:

**Sue Duffield, Fellside,
Thornton Rust: 663504**

Whilst we try to ensure that all information is
correct we cannot be held legally responsible for
omissions or inaccuracies in articles, adverts or
listings, or for any inconvenience caused. Views
expressed in articles are the sole responsibility of
the person by-lined. Articles by committee mem-
bers carry just their initials. We appreciate be-
ing asked before any part of the Newsletter is
reproduced

**THE JULY ISSUE WILL BE
PRODUCED ON
June 25th AND 26th.**

**DEADLINE FOR COPY:
THURSDAY
JUNE 20th**

Editorial

No flies on us! Last week a cuckoo was heard up at Lunds. That wouldn't have been particularly worth mentioning even just 20 years ago. That isn't all that's becoming very rare. Do you remember when the sticky fly-paper in the kitchen was solid with flies; the nearly empty jam jar on the window sill alive with wasps enjoying themselves; the rambler rose on the garden wall with a cloud of humming flies and bees? When did you last see a ladybird? And this is here in the countryside!

So this month we are on about little things:

Great fleas have little fleas upon their
backs to bite 'em,

And little fleas have lesser fleas, and so
ad infinitum.

And the great fleas themselves, in turn,
have greater fleas to go on;

While these again have greater still, and
greater still, and so on.

(De Morgan: A Budget of Paradoxes)

There is no doubt that we have all benefited from the use of pesticides. In the home we have almost eliminated flies, bugs or beetles. But has it been over-kill? Are they such a threat to our well-being if we take care? In arable farming, pest-resistant crops have produced huge increases in yield. The need for ever bigger fields to accommodate huge machinery has meant the removal of insect-, bird- and mammal-friendly habitats. In our market gardens spraying means the produce looks more or less perfect. We now expect that.

All this, of course, means that world-wide, more people in our still rapidly increasing population can be fed. Surely no-one could deny that that is right. As the recent annual Christian Aid Week, with the theme 'enough food for everyone' bluntly told us, one in eight people will still go to bed hungry tonight.

But that cannot be at the expense of the extermination of so much of life at the very bottom of the food chain upon which all the rest ultimately depend. Are we killing off too much? In the end that would be catastrophic. The huge diversity of animal and plant life, giving joy and the pleasure of discovery, has also to be safeguarded.

So back to the little things. It is surprising how much difference we can make. With great concern about the decline in the bee population, we can plant, even in our small gardens

or tubs, bee-loving flowers. Would we really worry if the odd corner could be left a bit wild? Insects and butterflies thrive on nettles! A pile of rotting logs and twigs provides a wonderful habitat for all the creepy-crawlies! How about digging up that un-wanted tarmac or patio to make more growing-space? If the nasty ash-tree disease persists, we'd all better plant a tree.

More seriously though, it is a matter of balance. Let the big boys get on with the essential efforts to increase the food supply, while the millions of the little people, covering vast areas of suburbs, gardens and even waste spaces, support the little things.

Newsletter Grants

We are pleased to say that the Newsletter committee has been able to give grants to the local schools to help support specific projects that they submitted:

West Burton to complete the purchase of a digital piano.

Bainbridge for early years outdoor equipment and library books.

Hawes for 'Zoolab' biology sessions and help with travel-to-swimming costs.

Dalesplay for permanent table-top play for the youngest children.

Wensleydale Tournament of Song AGM

The Annual General Meeting of The Wensleydale Tournament of Song will take place in The Methodist Schoolroom, Leyburn on **Friday 14th June at 7.00pm.**

Everyone is welcome. Please come along to this important meeting and help the committee to shape future festivals.

Eunice the Ewe



Last month's winner: **Cara Harrington from Spennithorne.** I was on the front cover.

June Competition

The answers are all birds. * = anagram

1. A bit less than surprising
2. Train us home *
3. Share grew pod *
4. St Paul's designer
5. Section of a section of a roof
6. Dire raffle *
7. Southwest let
8. Stamp collecting?
9. A pint at two in the morning
10. White rear to the Victorians
11. Sour edger *
12. A hundred off the next district
13. Two pairs of equal and adjacent sides
14. Manchester United's little pastry.

May Competition Answers

Some local places:

1. Dent; 2. Reeth; 3. Gunnerside;
4. Newbiggin; 5. Cray; 6. Oughtershaw;
7. Gearstones; 8. Thornton Rust;
9. Castle Bolton; 10. Kettlewell;
11. Cam End; 12. Clapham.

The winner of the £20 prize, donated to **Yorkshire Cancer Research** was **Janet Middleton, Hawes.**



Visitor Award for Dales Countryside Museum

The Museum in Hawes has won a top national award for the way it looks after its visitors - for the second year running. It has yet again been officially recognised as a tourist top spot by VisitEngland and has been awarded its Visitor Attraction Quality Assurance Scheme mark.

The scheme is managed by VisitEngland and involves a network of regional assessors who make site inspection visits.

Museum manager Fiona Rosher said: "It's really good news that we have been given the quality mark for a second time. It's a tribute to all the staff and volunteers who work so hard to make the Museum a dynamic place to visit and maintain the high standards of displays and exhibits."

The Wensleydale Pottery is 30 Years Old!

This spring is our 30th anniversary as a pottery business producing hand made ceramic products in Hawes.

From our original workshop in the market place, we moved to the Chapel Gallery at Town Foot. We have moved again, this time to Raynes Court on the Upper Wensleydale Business Park off Brunt Acres Road.

Our core business is making good, functional domestic tableware and a range of commemorative "sprigged" ware to promote events and businesses. (Among our clients we have provided pots for companies such as AT&T, Motorola, [Courtaulds Uk Ltd](#), Kodak and ICI.)

We'd like to take this opportunity to thank everyone, (clients, friends, family, you know who you are!) who have supported us through the years. We hope you'll continue your support as we make this fresh start!

Simon and Rebecca Shaw (Partners)



YOU Could be a Community First Responder

The Community First Responder Scheme is a partnership between Yorkshire Ambulance Service and local groups of volunteers living within the community.

If you can spare 15 minutes, come and have a chat with us about Community First Responders at Hawes Market House on:

Thursday 27th June 2013 from 6.30 – 8.30 pm

Saturday 29th June from 11.00 am – 2.00 pm.

You could gain - Free Training, Skills and Knowledge, Self-Development, Practical experience, CV Enhancement, Certification – Self reward.

Contact **Brenda Peacock** on **667529**

or **Gordon Sleightholm** on **667348**

Charity Cycle Challenge

On June 7th staff, trustees and supporters of the Yorkshire Dales Millennium Trust (YDMT) will embark upon a cycling challenge, aiming to cross the country from Morecambe to Bridlington over three days.

After dipping their wheels in the Atlantic Ocean, the cyclists will pass through the Lune Valley and into the Yorkshire Dales, taking in some beautiful scenery (and some steep roads!) on their way to Burnsall where they will spend their first night.

Day two will see the fundraisers passing through the Nidderdale Area of Outstanding Natural Beauty, where they will have to tackle the notoriously difficult twisty section of the route around Pateley Bridge, before continuing past Fountains Abbey and on to York.

On the third and final day the route passes through the Vale of York before heading towards the east coast and the finish line where bike wheels (and maybe the cyclists themselves!) will take a dip in the North Sea at Bridlington to celebrate reaching the end of the challenge.

The cyclists are seeking sponsorship for the challenge, with all money raised going towards the YDMT Hay Time Appeal. Trustee David Shaw will be joined by some of the staff and supporters of YDMT during the course of the 170 mile challenge, and they cyclists plan to stop off to see some of the many heart-warming projects along the route that the Trust has supported and helped to make possible over the last 16 years.

To sponsor the team and support the Hay Time Appeal please call YDMT on **015242 51002** or visit <https://mydonate.bt.com/fundraisers/ydmtroses>

Trip to Killhope

The annual outing of the Wensleydale Society, which is also open to non members, takes place on **Tuesday 9th July** to Killhope Lead Mining Museum.

The coach departs Leyburn Market Place at **9.30am** and returns at about **6.00pm**. The cost, including the bus and a 3 hour tour of the museum is £16.65 and should be paid on booking. To book contact **624246**.

Carolyn Waterhouse

Bainbridge and District Motor Club - 12 Village Rally

On Wednesday 15th May the 12 Village Rally started from Bainbridge, - pick 12 villages out of 16, and visit each in the shortest possible route. The choice of villages were West Burton, Askrigg, Carlton, Thornton Rust, Low Row, Carperby, Gayle, Buckden, Appersett, Thwaite, Preston Under Scar, Kettlewell, Simonstone, Grinton, Redmire and Wensley. We were given these villages in clues like 'coloured bog'!

The route we took and believed to be the shortest was Gayle, Appersett, Simonstone, Thwaite, Low Row, Grinton, Wensley, Preston Under Scar, Redmire, Carperby, Thornton Rust and Askrigg; each village had picture clues to solve. The clue in Askrigg had nearly every car searching for it, for quite some time!

Thanks to Dave Scarr for organising the rally. The Ladies and Members rally was won by James Bowers and Chloe Lattimer - well done.

The Summer Rally will be on **Wednesday 19th June** and will be organised by Grant and Barbara Humphries, everyone welcome.

Emma Thwaite



Mystery picture. This is easy for some; for others it might be quite surprising. Last month's was of Coleby Hall, Askrigg.

'Appealing' for Ringers !

When did you last hear a full set of church bells ringing ?

The answer is probably not for a long time, most likely when you were at or near a wedding. To make it more unlikely there are, in the area covered by this newsletter, only two churches with the minimum of bells for interesting ringing – at Askrigg and at Aysgarth, each having six bells. And even at these churches there are not usually enough ringers to make full use of the bells.

This is a pity both because of the scarcity of regular performances but also by not doing justice to the history of the local bells. Two of Askrigg's bells date from the seventeenth century. Aysgarth's earlier set of bells was rung to celebrate victory at the battle of Culloden. Nowadays the ringing is for weddings or to signal the build up to the main Sunday morning service. It would be good to hear the bells in the best possible light on more occasions.

No great strength or musical ability is needed to ring successfully. So if you are at all interested in seeing the bells in action or would consider learning the ringing technique yourself, please contact in the first place **Rodney Donaldson on 624609**, whether Askrigg or Aysgarth is handiest for you. You will be put in touch with the appropriate person.

Good ringing !

K.J.

Family Photographs at Gayle Institute

**On Sunday 7th July
9.00am-5.00pm**



Kevin Johnson (KJ Photography)
is coming to Gayle Institute to do
a photo session (families, pets, etc).
45 minute slot
£20 plus free 8cm x 6cm photograph.
For more information
contact Carolyn on **667139**

Leyburn Bowling Club

Leyburn Bowling Club's season is now well under way and we have won both of our first two league matches in the JSW Bowls League. An initial 74 to 56 win at Sessay was followed by an exciting final end 65-64 victory at Dishforth. On Sunday 12th May our first pairs competition of the year was won by our new captain Hazel Doig along with Peter Walker, who narrowly defeated John Gorman and Doreen Watt.

Many thanks to everyone who attended our Open Weekend at the end of April. We have regular practice afternoons each **Monday and Thursday at 2.00pm** at Moor Road and possible new members are welcome to join us. Equipment, tuition and even refreshments, are available free of charge.

Finally, a further reminder that Leyburn Bowling Club will be holding a Car Boot Sale at Cracken House Field Farm (opposite Tennants) on Sunday 7th July.

Merlyn Buckley

Charity Plant Sale Aysgarth Rock Garden

**Saturday and Sunday, 8th and 9th June
10.00am – 4.00pm**

Natasha Jauneika from The Wensleydale School Sixth Form will be holding a sale of alpine and perennial plants as a part of her fundraising effort for her forthcoming trip out to The Amala Orphanage in India this July. Every two years a group of sixth formers undertake the trip out to the orphanage with whom the school has had a charitable partnership for many years. Each student is responsible for raising their own funds of around £1500 to source the trip and take out valuable funds and resources to the orphans.

Whilst at the orphanage our students teach lessons to the orphans by day and organise fun activities for them in the evenings. The plant sale will take place at the back of the Aysgarth Rock Garden by kind permission of Rosemary and Adrian Anderson. Please do not park directly in front of the Rock Garden – parking is available in the lay-by opposite Hamilton's Tea Room as well as other areas in the village. All support is greatly appreciated.

A Visit to the Dentist

This usually fills me with fear and dread, but meeting Angela Daniel at her home in Litherskew, soon calmed my nerves.

Having negotiated the 4 gates, 10 sheep, a dozen hens and 2 dogs, I thought the question "do you take sugar in your tea?" was a further test, but Angela re-assured me that I was allowed to say yes.

Angela has been a dentist with Alpha Dental Studio for 5 years and works at the busy practices in Catterick, Leyburn and Hawes. People's first reaction to her job is often one of fear and then they tell her their whole dental history and complain about the cost. Angela overcomes this by talking enthusiastically to people about her profession. The size of the practice makes it viable within the NHS and the different locations give her the variety she enjoys. She is able to keep up to date with new techniques and use of new materials and loves passing on those skills to trainees who join the practice.

The considerable dental treatment she had as a child in Wigan, didn't put her off Dentistry, but inspired her to go into the profession. After a 5 year course at Sheffield University, she joined the RAF as a qualified Dentist. She spent 6 years in the RAF including a short spell in the Falklands which gave her a taste for the peace and isolation of the countryside. Mind you she said with just one local herd (but lots of penguins) on the island they got very excited about deliveries of fresh milk and there was often a race to buy the last bunch of bananas!

On leaving the RAF she gained experience in a practice in Cheshire and then moved up to Wensleydale with her partner Mark to be in reach of both sets of parents. They rented a place in Carperby whilst looking for their dream home and Angela enthusiastically joined the local WI. They both really appreciate the great support they have from the community in Litherskew, who all pitched in when Angela and Mark got married last year in Hawes and her WI friends came into their own supplying cakes for the big day. A wedding present to each other was 10 Dalesbred ewes who have just successfully come through lambing, thanks to the help of neighbours.

Dentistry has changed greatly with the

emphasis moving away from treating problems and towards preventative care and educating people on oral hygiene. Angela does however worry about the lack of understanding of the possible longer term consequences of cosmetic makeovers. The pricing policy in the NHS means there are now set charges a dentist can make, which unfortunately left her no room for negotiation when recently a farmer offered to pay her in sheep!

Angela loves to relax with nothing more than a pie and a pint, as her husband said "you can take the girl out of Wigan but you can't take Wigan out of the girl!" Oh and she wanted me to mention her Granddad Walter who will be proudly reading this in Skelmersdale.

K.J

Hawes Cricket Club A.G.M.

At the AGM on May 2nd the current Secretary, Treasurer and Chairman announced that they would like to step down due to both personal and commitment reasons. No one attending the meeting felt able to step into the vacant positions.

Over recent years, despite appeals for players and community support on match days, nobody has come forward to help run the club. It is felt by the current committee that it could be time for "rain to stop play" so to speak! Some members on the committee felt that this would be a shame after 126 years and requested an EGM be called. This will be held on **Tuesday June 11th** at the Fountain Hotel at **7.30pm**, and posters will be displayed around Hawes advertising the three vacant positions and details of whom to contact.

If you feel you can help on this matter but cannot make the meeting, please contact louiseraw123@btinternet.com / **07779192050**.

Flower Festival

Saturday 29th June

Thornton Rust Mission Room
and

SONGS OF PRAISE SERVICE

Sunday 30th June, 6.30pm

Upper Dales Family History

Our March speaker was Paul Dryburgh from the Borthwick Institute of Historical Research who gave us an entertaining introduction to the history of the Institute and the resources they have there which are available to the public.

The collection in the Borthwick dates back as far as the 13th century and was once the archive of the Archbishop of York. The main documents there are church related, including copies of parish registers, marriage bonds, probate records and cases which were tried by Church courts. They also hold records of some key businesses from the area, such as Terrys and Rowntrees, and of York hospitals and asylums.

The next meeting is on **Wednesday, June 26th, at 7.30pm** in Harmby village hall. The speaker is Suzie Lennox on *'Bodysnatching in the North of England'*.

Suzie will be looking at the period from 1740 to 1832, considering the reasons behind the phenomenon, how it was done and some of the, not always very effective, deterrents employed against it. Contemporary newspaper reports and other documents often quote the name of the disinterred and where possible Susie links these with pictures of gravestones and register entries, highlighting examples from the North of England.

Entry is free for members and non-members are very welcome at £2 each. For further details see the website at www.upperdalesfhg.org.uk or contact Tracy Little 01748-884759.

Children's Services at St Oswald's

Please note that Children's Services, usually held on the first Sunday of the month at 4.00pm will **not** take place during June, July and August.

They will resume again in September with more regular services.

Snippet

The Microsoft Office dictionary doesn't, obviously, like 'Penyghent'. It suggests '*pungent*'!

Meetings to Boost Yorkshire Dales Businesses

Top tips to help businesses in the Yorkshire Dales boost their profits will be available at a series of free events over the next few weeks.

Four meetings focusing on marketing have been organised for members of the Dales Tourism Business Network, which was set up by the National Park and the Nidderdale Area of Outstanding Natural Beauty.

These meetings will be even more packed with information than usual. Spaces are limited and the events are usually very popular amongst businesses catering for visitors so booking is advised as soon as possible.

Kathryn Storey, the YDNPA's Sustainable Tourism Officer, said: "The Business Network exists to help boost the National Park's local tourism economy and the staging of the Tour de France Grand Depart next year - with a huge influx of one-off visitors into the area - is going to be a once-in-a-lifetime opportunity. Among the topics on the agenda at the meetings are:

- * Tips on easy, low-cost ways to improve marketing almost immediately
- * Ways of promoting to local people and developing 'Visiting Friends and Relatives' markets
- * Developing new resources and a business support programme

The meetings will all be on the same theme and will run between **1.00 and 3.30pm**, for our area: **June 6th** at the Dales Countryside Museum. Anyone who would like to book a place online can go to <http://www.dalestourism.com/events.html>

Pip Land

Outing to Lancaster and Morecambe 26th June

Wensleydale Camera Club
and British Legion

Depart Leyburn 9.00am, West Witton 9.15am
and pickups by arrangement along A684
as far as Hawes.

Return at 4.30pm to arrive back by 6.30pm.

To book phone **624897** or **624109**.

Cost £8 payable at time of booking

The Handbells are Ringing in Askrigg Again

Early in April an enthusiastic group of novice players met in the Askrigg village hall. Their ages ranged from 12 to 74 and their handbell ringing experience ranged from absolute beginner to slightly experienced.

The handbells belong to Askrigg Church and have been away on loan and used in various villages for the last decade. When I moved into the dales last year I attended Askrigg church and I heard that there were bells belonging to the church somewhere in the area and expressed an interest in possibly starting up a group in the village. No sooner said than done, Rev Ann Chapman turned up at my door with the bells and informed me that I was now on the insurance! So the ball was securely in my court.

Handbell ringing started in England back in the 17th century. The small bells were used as practice bells for the tower bell ringing teams allowing them to learn their 'method' ringing in warmth and comfort without disturbing the neighbours! These bells were then used for simple tunes, particularly at Christmas and the art of tune ringing began. Bells began to be tailor made with more sophisticated clappers and handles. We meet on Thursday evenings (except the third Thursday in the month) from 7-9pm in Askrigg Village Hall. No experience is necessary, everyone can experience the joy of creating music however little musical knowledge they have. At present we have 12 members. Our evenings are good fun even though we have to concentrate to play in the right place, using musical notation we have managed to play some simple tunes. Our first public performance will probably be at Christmas when we will play for the Christmas Tree Festival.

If you are interested in joining our group please contact **Maureen Hardy 650135**.

Richmondshire Orchestra Sunday June 16th 3.00pm

St. Oswald's Church, Askrigg.

A musical journey from Land's End to John O'Groats.

Tickets £8.00 (accompanied children free)
from **622685**

Wensleydale Decorative and Fine Arts Society

Leonardo in Milan

Leonardo da Vinci spent 18 of his most productive years in Milan, where he found fame, and the freedom to develop his interests in nature, art and science.

In *Leonardo da Vinci: Maestro del Disegno at the Court of Milan*, **Leslie Primo** describes Leonardo's early years in the Florentine workshop of Andrea del Verrocchio, followed by 18 years of sublime production in Milan. It covers his fascination with human dissection and scientific experiments, and the production of such iconic images as "The Lady with Ermine" and "The Madonna of the Rocks", and describes the preliminary drawings and sketches that were the genesis of "The Last Supper".

This lecture is on **Tuesday 11th June at 2.00pm** at Middleham Key Centre and is preceded by the AGM at 12.00 noon.

Non-members are welcome at £5 per lecture, pre-booking is essential, membership and further information is available from the Membership Secretary, tel. **01748 886545**

Inquiry into proposed extensions to the Lake District and Yorkshire Dales National Parks

This is to take place at Castle Green Hotel, Kendal beginning on June 4th and is unlikely to last more than two weeks.

As there has already been much debate about the pros and cons of this for a long time, the Newsletter has agreed to simply record the outcome of the inquiry when that is received.

Those entitled to appear — the 'representors' are those who made representation to DEFRA during the period leading up to the March 2012 deadline.

The Inspector is not precluded from inviting others to appear if he decides that they could bring an important perspective which would be helpful.

See www.lakestodales.info for all procedural details.

Best Foot Forward

When most of us living in the Dales think we 'know' them it is surprising and shameful to find quite wide areas we've never really traversed. On one occasion it came about like this. We were travelling down to Skipton beyond Grassington when it occurred to me that despite having looked up left many a time to the obelisk and cross above Cracoe and Rylstone, I'd never been!

So here is the ensuing walk around Cracoe Fell, Burnsall and Thorpe Fell, Barden Moor, Embsay Moor and back to the cross and obelisk.

It is obvious where to leave Cracoe; simply go east along Fell Lane. It is less obvious where to park, but if you promise to call in the farm shop or tea room opposite when you get back I'm sure they don't mind you using their car park!

At the sudden ending of Fell Lane (track) the whole walk is on open access so either follow me or go where you like but take care about the ground-nesting birds! In fact this area has been open for roaming since the 1970s, long before the 'Access to the Countryside' act. There are some short closures for grouse shooting. I climbed due east up the fell, about 900 feet, to meet the moorland track near Bartle Crag and following this for a good two miles of gentle walking, first through old mining areas then grouse butts, there are great views left down to, and across this lovely part of Wharfedale.

The track turns nearly south, crosses Gill Beck, to meet a wall at the corner of Nelly Park Wood. My route turns right beside the long straight wall over Long Band and drops down to the next valley at the northwest end of Lower Barden Reservoir. It becomes apparent which is the best way to cross Barden Beck depending upon the amount of water.

About three-quarters of a mile roughly southwest over this pathless area brings you to the long bridleway linking the Embsay-Barden Road to Rylstone. If you like a long tramp, open space, birds singing and the chance to get a move on, this is for you. I became so lost in my own thoughts that as I hastened along I failed to swing right on the correct track at — I don't usually give you a grid reference — 997572, that I was soon looking down to Embsay and Draughton Quarry! Steps retraced, uphill! I do not make

mistakes on all my walks!

After a further three-quarters of a mile at High Bank my route turns north to the Rylstone Cross; originally it was a large stone in the form of a man and was known as 'The Stone Man'. A wooden cross was erected on the top of the stone pillar to commemorate 'The Peace of Paris', the date on the back is



1885 and the initials DD and TB which are carved on it signify the Duke of Devonshire and T. Broughton, who was land agent to the Duke. The wooden

structure has been renewed several times, the last occasion being after the severe winter of 1947. The present cross was rebuilt in 1997.

The gritstone edges along here are so typical of this more southern part of the Dales. Con-



tinue beside the long wall climbing north-east and along to the war-memorial obelisk and from here there is a lovely descent across Cracoe Fell, more or less due north back to

the end of Fell Lane.

For me, the beauty of this walk of about 12/13 miles is the opportunity to see from relatively high ground first north, then east, south and west, contrasting the limestone and gritstone landscapes.

A.S.W

Aysgarth Methodist Church

Three events:

Concert by Young Voices with
Barbara Roocroft

Saturday June 1st, 7.00pm

Aysgarth Institute.

Proceeds towards repair of the
chapel west wall.

Coffee Morning

Friday 7th June, 10.00am - 12 noon

At Leyburn Methodist Schoolroom

Also Book, Cake and Plant Stalls

Songs of Praise with
Singing for Pleasure

Sunday 9th June, 6.30pm

Credit cards at the ready ...

Yes the time has arrived; computer programs (such as Word or Photoshop) are starting to disappear as products for consumers and businesses, and the new buzz phrase is 'software as a service'.



No longer can you buy a copy of Microsoft Office as a package with a CD or DVD in the box; you have to download it from Microsoft – which is fine if you have a fast broadband connection but if you are still on dial up (as some of my customers are) or have really poor broadband speeds, forget it.

So why are Microsoft doing this? Is it just to save a couple of dollars per package on a boxed product? No – it is software as a service and getting you used to the idea. Microsoft have already started offering software as a service but these new licence key only packs are a step to get customers used to the idea that parting with cash just gives a way to tap into a service instead of a box with a product.

You may have seen adverts for Office 365 – this is software as a service. Apparently you can get the full Office Professional package much more cheaply than the home version used to be on a disk. So what is the catch? The catch is that if you use Office 365 you pay for it every year as a subscription and if your subscription lapses you lose the use of the software. It is only a "small" fee (currently about £80 per year, every year but only for home users!).

Is it just Microsoft? No! Adobe announced recently that all their products (including the popular Photoshop) are all becoming a subscription service. For a "small" monthly fee you get access to all the latest versions of their software – so not only Photoshop but also their publishing package InDesign, video editing and video effects. All top quality professional products. And what is this "small" fee – just under £50 per month! Yes you read correctly nearly £600 per year. Not many domestic users will be prepared to pay for this – but how many business customers can afford it when that is a price 'per seat'?

If you read all of the marketing blurb it is a

no-brainer – these services are such good value and offer so many advantages to the purchaser compared to traditionally buying a disk and installing the software once and for all?

Are there really advantages for the user? Well to be fair there may be some (esp. if your boss is paying) but the real advantage is for the company selling the 'service'. They get a permanent cash flow – no more buying Office 2003 and still using it in 2013 (as many people do – heck I still see Office 97 on my rounds).

Microsoft and Adobe have thrown down the gauntlet and set the agenda for the foreseeable future. All that can happen is that others follow suit. My prediction is that this is going to get a lot worse and there will be lots of scams from other 'companies'. This is especially true with the constant push to get people to move to tablets because these are seen by all the major players Apple, Amazon, Samsung and Microsoft to be a cash cow – they are designed to get you consume product – once you have set them up you don't even have to give card numbers to purchase product!

Sorry to be depressing this month for forewarned is forearmed!

As usual any comments, questions or if you need to get in touch for other reasons do drop me a line via my website www.dalescomputerservices.com.

Carol Haynes



Your Youth Club is Here!

Askrigg and Mid-dale Youth Club

This is your youth Club. We want you to come and be part of something really great. We want your ideas and support to make this a really great place to go and meet new friends.

Everyone is welcome aged 11 to 18 years. We plan to run weekly sessions on **Thursdays from 7.00 to 9.00pm** at the Yorebridge Sports Centre.

This is at the planning stage but you have a voice in anything we do.

Come along to our consultation events: **Thursday May 20th** at Yorebridge.

This new voluntary Youth Club is supported by North Yorkshire Youth; www.nyy.org.uk

For more information: **Gareth Edwards, 650185**

North Yorkshire Open Studios

Saturdays/Sundays

June 8th/9th and 15th/16th 2013

Studio opening times: 10.30am–5.30pm

NYOS celebrates its 9th year with 123 artists, designers and makers opening their studios and workshops to the public. From the remote hills of the upper Dales across the Vale of York to the North York Moors and the coast, painters, printmakers, jewellery-makers, sculptors, potters, textiles artists, photographers and other visual art professionals will be inviting the public to see new work in the making.

Three local artists/makers have been selected to participate: Andrea Hunter, felt artist at Focus on Felt, Hardraw; Helene Shovlar, designer-jeweller at Brunskills Cottage, Cotterdale and Angela Keeble, painter at Baincote, Bainbridge. The event, supported by funding from Arts Council England, has gone from strength to strength with people coming from all parts of the UK and abroad to enjoy the high quality art, food, accommodation and countryside.

Full details can be found on the website www.nyos.org.uk and brochures are available from TICs and the Dales Countryside Museum.



46th Annual Hawes GAA



COUNTRY & WESTERN THEME

Open Fancy Dress All Welcome

Saturday 22nd June, 2013

on The Creamery Field, Gayle Lane,
by kind permission of Wensleydale Creamery

To be opened by
The Gala Queen - Cornelija Devialtovskyte

at 1.00pm outside the Bulls Head Hotel.

FAIRLY FAMOUS FAMILY - RODEO BULL

JACK 'N' JILL - FACE PAINTING

PUNCH & JUDY - FUN FAIR

STALLS and MUCH MORE

Admission By Programme £3.50 - Children Under 16 FREE

Printed by: www.barnesprint.co.uk

**Do something extraordinary...
dedicate a tree.**



A small act makes a big difference. Celebrate something special.

For a donation of £15 YDMT will plant a tree to help restore hundreds of natural woodlands.

01524 651004 or www.ydmt.org

Bolton Castle News

As our visitor numbers have increased steadily over the last few years we are now in a position where it is possible for us to reduce our admission charges in the hope that this will encourage even more people to visit.

We are now also offering a Local Resident Season ticket so that anyone living in DL8 postcode area can pay once and visit all year. Just present any proof of address on arrival.

The prices have gone down but the experience has been enhanced by the arrival of two new Owls including a tiny Southern White-Faced Owl called Dora and an enormous Turkmenian Owl named Cleo who are both great characters and are adding a lot of interest to our displays.

We are now running a few joint ventures with Wensleydale Railway including offering a 20% discount to anyone arriving on the Wensleydale railway and discounts for groups and schools.

With the help of our fantastic volunteers we have installed some fascinating new interpretation including a timeline showing the Castle's turbulent past from the very beginning up to present day, a family tree, several replica Mary Queen of Scots tapestries and two large illustrations of the Castle showing it as it would have looked in 1399 and as it looks today.

Katie Boggis

Wanted

Good clean glass jars with or without lids for jam making can be left in the Porch of St. Margaret's Church, Hawes, or left at Steppe Haugh, Town Head, Hawes.(next to the Petrol Station) to help raise funds for the church

Middleham and Dales Local History Group

Tuesday 18th June 2.00pm

Middleham Key Centre

The heritage of dry stone walls in the Dales

Kevin Cale

As they snake across the valleys and moors, dry stone walls are one of the most iconic features of the managed historic landscape of the Yorkshire Dales. In this talk Kevin Cale will introduce the rich heritage resource that they provide us with by drawing on Mashamshire case studies. He will then go on to consider where to collect evidence for wall studies, look at wall chronology, and also describe features found in walls. In the final part of the talk he will look at management and conservation issues as he discusses the future of dry stone walls.

Professional archaeologist Kevin Cale is currently the director of Community Archaeology Ltd, a company that has developed from his passion to involve the public in the heritage of their local area. His aim is to inspire groups and schools to record and hand on their past by getting involved in practical activities. He has recently worked with the Bordley Township Project and ran a dry stone wall day course there. Annual membership of the group is £10 and visitors are welcome to attend individual meetings for a fee of £3. For further information, please contact **Tony Keates 640436** or email dotand-tonyk@btinternet.com

Fibre Optic Broadband

BT's recently produced list of the country's exchanges with dates when they will become fibre optic, indicates that all our local exchanges, Leyburn, Hawes, Aysgarth, Bainbridge and Gunnerside, will be converted by September 2014.

Each area will become "Fibre to the Cabinet", the cabinets being the green street-side BT junction boxes in villages. This means that the fibre optic cables reach beyond the exchanges. In the case of new properties built it is likely that the fibre optic cable will reach right to them.

This extension to the reach of fibre optics will increase internet speed greatly and will also extend the reach to more isolated areas not yet able to have broadband.

Christian Presence, Mission and Ministry...

were among the topics covered at the open meeting on 22nd May, hosted by the Churches Together in Hawes and the surrounding area. We met in the Methodist Schoolroom, and enjoyed refreshments as over 20 folk, from diverse Christian backgrounds, gathered to offer opinions, suggestions and entered into much discussion as the evening progressed. After exploring individual understandings of effective Christian presence in community, conversations extended towards the situation specifically in Hawes, with a desire to identify local needs alongside varied aspects of church ministry, and being challenged by the question 'should we be congregations that minister or ministries that congregate?'

Clearly there were no straightforward answers to the issues raised, but in becoming more aware of the complex layers that make up our local faith community, combined with the current social context in the area, we hope to address some of the concerns raised during the coming months. If you have any comments and suggestions to offer, please contact:

Rev Janet Park (Tel: 667268)



The children at Dalesplay have had great use of our new Windy Day Set that we take outdoors when the weather is windy. It consists of all kinds of windmills and wind chimes and the children find lots of ways to describe them as they see them blowing around outside. We have also been planting some seeds to grow our own flowers in the outside boxes, also some carrots and peas to grow ourselves.

Our sponsored toddle around Hawes will be on the 19th of June so watch out for us wandering about; hopefully the weather will be kind to us and we can finish it off with a play in the park.

Thank you to Sharon and Sheila and the parents who kindly came to take a turn on the tombola at the table top sale. It raised £196 for Dalesplay.

To enquire about a place or for any information please contact Dalesplay on **667789**.

Louise Cloughton

News From Sycamore Hall

We had another very pleasant afternoon being entertained by our always very welcome guest Ruth on Wednesday the 8th, smartly dressed and sporting a light flashing belt (real cool).

Sycamore Hall has been very quiet this last month and has not given me much to write about, perhaps the bad weather has played a part in creating a damp atmosphere. I am sure some sunshine would have seen a day or two of residents walking out, visiting the greenhouse and cup of tea-ing it round about the sunhouse. Let's just hope the weather improves and the facilities can be enjoyed by the people living here and their visiting friends.

These days the television keeps us very much aware of what we can do to help societies giving aid to children abroad. Wild Life in plight and various other charity-organisations who need financial support. We know at Sycamore what support means to us, and we like to do our best to support other causes.

One in particular stands out to us this week - DEMENTIA AWARENESS has come to the fore once again and Michelle will make a donation on our behalf to this worthy cause.

She has also taken into consideration the residents and has organised a day of entertainment on Friday 24th starting at 10.45am. in the lounge with a quiz and a bingo morning, followed after lunch with the film "Singing in the Rain" with Gene Kelly and Debbie Reynolds, in the lounge at 2.00 pm.

Derek Ramsden

Extra Care Proposals for Hawes

This proposed development for 40 units of housing for elderly people is, of course, producing plenty of discussion.

A 14-page brochure with explanation, description and detailed plans is now available for public consultation. Copies can be seen at the Community Office and Library, Health Centre, Museum, school, churches, post office and the Creamery.

We would urge as many people as possible to read this, and also to visit the proposed site at Turfy Top and the other suggested location at the end of the Business Park, so that the full facts are known.

A planning application is expected to be submitted to the Authority in July, and any one may write there with their objections, support, comments or questions.

Hidden Secrets Trail Opens

The biting wind and hailstones last Thursday didn't stop the children from class 3 at Hawes School, with artists, sculptors and friends of the Dales Countryside Museum from gathering in the outdoor auditorium and then later on exploring the new trail along the old railway, the far platform and the area beyond the road bridge.

Sue Foster, the Museum Friends' chair, welcomed all and paid tribute to those involved in setting up this trail, its aim being to help people to explore the heritage of the Dales from pre-historic times. Poet and creative writer Char March, who had worked with children and others in the local community, spoke and read poems inspired by the Dales, and then the various sculptures were described and explained as we made our way to the far end where Richard Law from 'Flying Shavings' was finishing off his story-telling chair, as Char cut the ribbon to open the trail.

The sculptures, in various materials, depict many aspects of the Dales' geology, archaeology, wildlife and history and extend the scope and appeal of the museum with this outdoor experience.

A.S.W.



Jennifer Tetlow with her sculpture of an aurochs from about 15,000 year ago.

Ranger Report

Spring at last! And hopefully summer by the time you read this!

This area is nationally important for a range of ground nesting birds, notably 'The Big 5', Skylark, Curlew, Red Grouse, Lapwing and Oystercatcher. These birds are easily disturbed, particularly between now and the end of July, which is their breeding season. If you are out enjoying the National Park with your dog, then please keep it on a lead to reduce the chance of disturbance. Dogs can often disturb birds sitting on eggs or young chicks, which may result in the egg or chicks being chilled and the clutch failing. If you don't know your lapwing from your curlew, why not pick up a leaflet from Hawes National Park Centre?

If you are venturing onto the fells off public footpaths or bridleways, onto open access land, then also check to see if there are any temporary restrictions in place on this access land. Frequently landowners implement restrictions to help reduce the disturbance to ground nesting birds. You can check for restrictions on www.naturalengland.org.uk/ourwork/enjoying/places/openaccess/default.aspx or feel free to give me a call, an email or drop in to Hawes National Park Centre in the old station Yard.

Thank you to those who regularly call in broken or difficult stiles & gates that you encounter on rights of way. Please keep these reports coming in so we can help to improve the valued rights of way network.

Matt Neale

Area Ranger – Upper Wensleydale

matt.neale@yorkshiredales.org.uk 666220

Wardle Community Band

A Brass Band from Rochdale
St.Margaret's Church, Hawes.

Saturday 22nd June at 7.30pm

£6.00 at the door.

Raffle, Tea and Biscuits.

Proceeds for St.Margaret's Church
restoration fund

New to You Sale

Aysgarth Village Institute

Wednesday June 5th, 6.00pm

Ladies', gents', children's clothes and household goods welcome.

In aid of Aysgarth St Andrew's and
Aysgarth Methodist churches.

Pleasure of Learning a Second Language

We are fortunate that tuition in French and Italian takes place every Monday during school term time at the Wensleydale Centre otherwise known as "The Gym"

It is an immensely enjoyable experience and not at all formal or straitlaced. We have a lot of fun and enjoy a lot of banter and good will. All the members who attend are 'mature students' and the classes are aimed at beginners and intermediate levels. However, all ages are welcome. No one is made to feel inferior and we all help each other out. Judith Macleod, our Tutor, travels all the way from Richmond to teach us and her expertise is much appreciated by all of us who attend her classes. We do get homework but it is not compulsory as it is understood that we all have family and other commitments.

The Management of the Centre allow us free use of the classroom for which we are very grateful and anyone reading this is welcome to join us as the lessons have proved invaluable - especially when we travel abroad.

All details and further information can be had from The Sport and Fitness Community Centre :

650060; admin@yorebridge-sport.co.uk or contact **Judith McLeod**:
judithm289@gmail.com; **01748 825517** or **07528 786584**

Kieran Fahy

NORTH RIDING DALES L.V.A.

27th ANNUAL CHARITY BIKE RIDE

Wednesday

12th June

2013



SPONSORED BY



START: LEYBURN, 10:30am → FINISH: HAWES, 3:30pm

Sponsor Your Licensees and Friends

COLLECTING FOR

GREAT NORTH AIR AMBULANCE • FRIARAGE HOSPITAL
BAINBRIDGE AMBULANCE STATION •
YORKSHIRE AIR AMBULANCE • DOCTORS' SURGERIES
AND LOCAL CAUSES IN WENSLEYDALE AND SWALEDALE

Sponsor Forms and Details in North Riding
Dales LVA Members' Pubs & Hotels

For more information Tel **07800 641890**
or email info@fountainhawes.co.uk

Prunings

*A personal take on Plants,
Propagating and other related rural ramblings.*



There is little that is more quintessentially representative of our English countryside than a bluebell wood at its best. The blue is magical and the scent unsurpassable.

In long established ancient woodland, especially here in the North, there is little danger that the bluebells are not native, but as a nation of plant lovers we have been careless and now there are at least three varieties of blue bell. We have a duty to take care that we do not introduce the foreigners where they may hybridize with our precious natives.

Hyacinthoides non-scripta is our true native found in woodlands, hedges and other shady places. *Hyacinthoides hispanica*, the Spanish Bluebell is a garden plant but is found in the countryside when it has been dumped there. *Hyacinthoides x massartiana* is a widespread hybrid and is now more common than its Spanish parent. If you have self seeded specimens and you are unsure of their parentage there are ways to tell, but you need to look at the flowers when they have just opened as the scent fades and the pollen is lost.

True native bluebells have **creamy white pollen**, any other colour indicates that it is definitely not native. The flowers have a strong sweet scent, Spanish Bluebells have very little scent. The flowers, which tend to be on one side of the stem, are tubular with the petals strongly rolled back, (recurved) and the flower spike nods at the tip. Confusingly, there is a genetic mutation which produces white flowers and these plants can be confused with the Spanish invaders unless you get a waft of the scent. Anything pink is foreign.

These perfect plants have interesting folklore in their history:- in the Bronze Age blue bell glue was used to attach feathers to arrows; the Victorians made starch from crushed bluebells to stiffen collars and cuffs; and bluebell sap was used in bookbinding and bees bore a way in to get to the nectar because the flowers are long and narrow.

Since 1998 bluebells, along with all other wild species, have been protected under Schedule 8 of the Wildlife and Countryside

Act which makes it illegal to remove plant material without permission. If the site is protected then this involves the statutory agencies and any removal falls under the Theft Act 1968.

Many of the quality newspapers have featured bluebells this year, partly because, like so much of our plant life, they are about two weeks late in blooming, but also because habitats are threatened, and we are in danger of losing them through hybridising with the Spanish invaders. According to the Forestry Commission, in the next 15 to 20 years most bluebell woods will be a combination of species and it will be difficult to find a wood full of true natives. Perhaps we have a duty to stamp out the aliens?

For more information about these precious plants visit The Woodland Trust website or the Natural History Museum website.

Good luck! And whatever you grow, take time to enjoy it.

Rose Rambler.

West Burton School News

The half term was kicked off with a football tournament at Askrigg primary school, with most of Class 2 taking part, splitting up into two teams of eight people. Owen Pratt an A team player commented "It was wet but we played well." And Sophie Sharp said "It was exciting!" The A team drew one match, lost one and won one. The B team had a good run of form as they won two matches and lost one. There was a good team spirit in all of the matches, and everyone enjoyed taking part.

Half term finished off with a visit from the Konflux Theatre Company who helped Years 3 to 6 create play in a day. The pupils started rehearsing mid-morning and had to perform to an audience at half past two! The play was called Maths 4 All, with the message that we use maths in our daily lives and not just at school. It was a challenge but Joe Beaton a year 6 pupil said "It was fun and interesting." It was well received by Class 1 and the audience of parents.

**Sophie Preston, Joe Beaton and
Myles Robinson Y6**

Surgery News

More locum Doctors

During June another 2 locum doctors will be working in your practice. Dr Jenni Holmquist was previously a GP in the Channel Islands & latterly at Hull. She has taken early retirement from her full-time practice & now lives at Gunnerside. Dr Debbie Ashcroft will already be known to many of you. She is a GP at the Leyburn practice & lives at Carperby. All being well we expect Dr France to be back for the last week of June. There is a note from him updating you on his condition elsewhere in this Newsletter.

MMR catch-up campaign

In parts of sub-Saharan Africa they have a saying: 'never count your children until the measles has been through...'

Many of you will have read press reports about serious outbreaks of measles in young people in some parts of the UK. This has happened because many infants were not vaccinated due to a spurious health scare about the safety of the MMR vaccine. Now there is a catch-up campaign to vaccinate children who may have missed out first time around, or may have had an incomplete course. The first target group is 10-16 year-olds, & we have identified a small number who need to be offered vaccination. We will be contacting parents over the course of late May & early June. In this case no news is good news, so if you don't hear from us your child has been vaccinated already.

Out of Hours & NHS 111

Well folks the latest chapter in this comedy of errors is that NHS 111 is supposed to be launched (yet again) on July 2nd. From this date onwards, **DO NOT** ring the surgery number once the surgery is closed. Instead, ring 111 and you will get through to the call centre in Wakefield. Their staff have details of all the services available in your area, and will direct you accordingly. You can ring NHS 111 during surgery hours, but I would recommend that you ring the surgery if we are open. The number for serious, life-threatening emergencies e.g. serious accidents, collapse, suspected heart attack or stroke remains 999.

On the subject of out-of-hours services, many of you will have seen press reports about the pressures on hospital A&E services, & how this is all the fault of GPs. Your local GP commissioning consortium did a lot of work on this last year, to identify why people present at

A&E with problems that should be dealt with in GP surgeries. It was discovered that even at times when GP practices were offering open-access surgeries, patients who lived near hospitals would still show up at A&E when their problem was not an accident, or an emergency. Your practice has some of the lowest A&E attendance rates in N Yorkshire, as do all the rural practices. An audit of those cases that did present showed that our patients used A&E entirely appropriately, mostly for injuries where a bone fracture is suspected. The cost of the Out-of Hours GP service in our area is £9.28 per patient per year. That pays for the call centre, the facilities, the Doctors, drivers & cars. Whilst NHS 111 is free to callers, each phone call to the service costs the NHS £7.50

If you have any comments or suggestions regarding your GP services, please contact me at Hawes surgery **667200**, or e-mail me.

Clive West
clive.west@gp-b82045.nhs.uk

Dr France Writes...

I am hoping to return to my duties as your Doctor in place of being a very bad patient before the end of June.

I have been overwhelmed by all of your such very kind thoughts and wishes sent to me in whatever form, and although I have had cancer, surgery, scopes, scans and chemotherapy, I am now recovering well, and will be well by the time I restart my duties. My recovery has been helped very much by your thoughts, and it has made me feel a very valued member of our wonderful community. Thank you.

This has none the less been a difficult time for me and my family, though maybe my experience of being a patient in all the hospital departments that you never want yourself to be in, will be of help to me in better understanding indeed what some patients have to go through. It has made me very aware, too, of the very practical issues relating to getting to and from James Cook University Hospital, although my care there has been excellent.

I will continue to support service provision from the Friarage Hospital, however, with renewed enthusiasm. Upon my return, please consider me to be better, allow me to care for you, and please respect my privacy beyond this in order for me to concentrate better on my work.

Shires etc.

Ever since 1974, visitors (and some locals) have been somewhat confused at signs indicating they are entering 'Richmondshire', one of the district council areas drawn up then.

Someone said to me, "You should do a piece on 'shires'". He didn't seem to know what one was exactly. So without taking up too much of your time or Newsletter space, here goes. It is quite interesting if not quite exact!

'Shire' is a traditional term for a division of land, the word coming via Old English *scir*, from Old German *scira*, meaning care or official charge.

After the Romans left Britain in the fifth century, Anglo Saxon areas progressively became established in England, like Wessex (much of south and southwest), and Mercia (midlands area), and later Danish settlements (covering East Anglia, East Midlands and Yorkshire), plus Northumbria which originally had literally been 'North of the Humber'.

Within these wide areas shires became established, administering justice, collecting taxes and organising the military. More often than not the name of the area would be the central town + 'shire'. The majority of our present day counties still reflect these areas.

Some notable modern day counties, part of the ancient Wessex—like Sussex, Middlesex and Essex (South-, Middle- and East- Saxon) - have never had 'shire' added; nor has Cornwall, an ancient British ethnic area, and only rarely do we read Dorsetshire or Devonshire. Durham (never a 'shire') is a one-off, as it developed from a diocese of the early church. *Cumberland* and *Westmorland* didn't need a 'shire'; the suffix '*land*' means more or less the same.

Within the original Northumbria, other areas were 'shires'; Hallamshire, still used locally in the Sheffield area, Allertonshire, Cravenshire, then a bit later, Hexhamshire, and of course Richmondshire. So our local name, the 'area around Richmond' has a very long tradition. It is generally agreed that by the year 974, under King Edgar, the various large areas of England were united enough to have a growing unity and within them by then the vast majority of our present day counties were established. Yorkshire, being so large, had the unique areas of '*ridings*' meaning thirds.

These shires continued after the Norman

Conquest, being named 'counties'. 'County' comes from the old French 'conté' meaning jurisdiction (of a count or earl). By the way, the word 'sheriff' comes from 'shire-reeve', a locally appointed official.

The word 'earl' or 'earldom' also appeared and was used for an area. This is of Norse origin and was brought by the Vikings who established the other large area—Northwest England (including us), southwest Scotland, parts of coastal Wales, the Isle of Man and a bit around Dublin.

It is significant that it was exactly a thousand years, from 974 to 1974, before there was any real major change in the counties of England.

While we're on with it, let us go one step further down; each county during the seventh to eleventh centuries became divided into 'hundreds' each being enough land to support a hundred households. They were administrative, judicial and military, being part way between the parish and the county, and usually took their name from the place where their assembly met. They were still in existence, though with decreasing responsibilities, until 1867 with the establishment of county courts.

In areas settled by the Danes, including much of Yorkshire, the wonderful word 'wapentake' was used instead of 'hundred', from the old Norse meaning 'the act of taking weapons to indicate assent in an assembly'. Wensleydale is in Hang West wapentake and Swaledale in Gilling West. The old North Riding of Yorkshire comprised 13 wapentakes.

What I would like to know: what does 'Hang' mean in our area, Hang West? There is a full list of every settlement in the *Wapentagium de Hang*, but that's all!

A.S.W(apentake)

Afternoon Tea

St. Bartholomew's Church, West Witton
(Village Hall if wet)

Sunday 9th June, 3.00-5.00pm

Plants/Produce stalls—Followed by

SONGS OF PRAISE

Local-led Service to follow at 5pm

Bring a friend or two, everyone very welcome

Hawes School News

Wallace and Gromit come to Town!!

What an exciting adventure we had on Thursday! Sarah Brown (George and Jasmine's mum) and Lucy (marketing manager for the Dairy) very kindly told us a about a very special visit being made by Wallace and Gromit to the Wensleydale Creamery. Naturally we were delighted to go along and meet them as you can see from our wide smiles.



School Fund Accounts: We're very grateful to Hazel Thwaite and O'Reilly's accountants, who audited the School Fund accounts free of charge.

Bags2School: The PTFA have organised a Bags2School collection on Thursday 6th June. Bags need to be at school by 9am ready for collection. Items for the bags are: adult and children's clothing, bedding, soft toys, paired shoes, hats, belts and handbags. Please help us to raise money by asking friends and family to donate their unwanted items. Many thanks.

Class 1 Baptism: On Wednesday Rev. Ann Chapman kindly came into school to baptise our Baby, 'Rosie Lou-Lou Montana', as our current R.E topic is 'Belonging to a Religious Family'. We set the hall out with seating for everyone and made a font. Parents and godparents were chosen and took on the role with great responsibility. We all had an enjoyable time.

Weaving in Class 3: Jane Sammells from the Dales Countryside Museum came into school on Monday 20th May to help us to make small woven hangers using summer meadow col-

ours. The children really enjoyed the weaving, using fabric, wool and incorporating willow, dogwood and natural wool fibres. The whole class produced some fantastic work!

'Into the Meadows': Class 3 went to the museum on Tuesday 21st May along with children from Askrigg and Bainbridge to learn about the cycle of a hay meadow. They decorated buns with icing 'meadow flowers' and planted seeds, which will be used in a Yorkshire Dales meadow being created in Birmingham by Chris Myers, who presents the programme 'Wild Things' on Channel 4.

Dawn Alderson, Administrator

Askrigg School News

The Eco School Green Flag Test

At Askrigg School we achieved our goal of a second green flag for being an Eco School.

For the first green flag you have to cover three topics and the second flag you have to cover five topics. We had to cover five and achieve Global Perspective by sending milk bottle tops to Gambia and we covered litter by putting a litter bin in the school grounds. We needed to show the assessor around the school and the field. We showed the assessor the school garden, the bike rack and the pond, the assessor asked us all lots of questions. The assessor didn't tell us that we got the green flag so we were waiting till the next day, when we finally got to school we heard from the Eco school that we got our second green flag. We were all really proud.

Millie Y5 and Bobby-Lee Y6

The Lifecycle of a frog

In class 1 we have some tadpoles. To look after them you need pondweed. We need to change the water twice a week. You can't use tap water we use rain water from the water butt. The tadpoles start small and black. Next at 2 weeks they get bigger. When they are 8 weeks old they get two back legs. At 10 weeks they get front legs. Then they turn into a frog.

Jack Dalton Year 1

Wensleydale Railway News

Free Travel on the Wensleydale Railway

From 25th May to 2nd June the Wensleydale Railway is taking a very bold step. It will be the first UK rail operator not to charge fares for ordinary travel!

This should really put the Wensleydale Railway on the map. The offer will apply to 'buy on the day' tickets only, not to booked groups who have reserved seats or to pre booked catering trains or special events.

That does not mean that we do not want passengers to pay anything for their travel. We will expect them to pay what they wish, or what they feel the experience was worth. Every opportunity will be made available for them to donate during their journey

Passengers will still need to carry a ticket, which will be issued as a Free of Charge Day Rover with the total number of passengers travelling shown clearly in the appropriate space.

It will not be possible for people to reserve seats on the services, unless they have paid the normal fare in advance, and we will be operating to the advertised timetable over this period.

On and about the Railways in June

There is a lively programme of events on the Wensleydale Railway this month (June), starting with the annual Diesel Gala weekend on June 8/9. Scheduled train services also run on Tuesdays, Fridays, Saturdays and Sundays, with the

vintage bus from Masham and Redmire to Hawes on Tuesdays only.

There are four bookable excursions in June: the delightful Wild Flowers and Hay Meadows rail and coach excursion (Fri/14), an evening Dixieland Jazz and Real Ale train (Sat/15), Father's Day event including buffet lunch (Sun/16) and an Afternoon Tea Train (Sun/30). For tickets and information phone 08454 50 54 74. Accommodation providers are asked to tell their visitors about these events; all welcome - but book as early as possible to ensure tickets for bookable events.

Events to mark the Tenth Anniversary since passenger trains returned to Wensleydale will be held on the first week-end in July, includ-

ing a car rally (and, of course, train services). Information from local press and TICs or see www.wensleydalerailway.com

Settle-Carlisle Early Morning Services

Now there are early morning train services from Garsdale on weekdays (Mon-Fri), there are many new journey opportunities for travel further afield. The 06.59 arrives in Leeds at 08.37 and the 07.04 from Garsdale to Carlisle offers a connection arriving in Glasgow at 09.45. The summer timetable began on May 19; there are slight changes from the previous timetable so check before travelling - copies available free from the ropeworks, DCM and Community Office.

Ruth Annison

TOSH

The Old School House Cinema and Community Centre Leyburn - a Progress Report.

After much background work the Licence (precursor to the Lease) has finally been signed with the Diocese of Middlesbrough and we are in the former **St Peter and St Paul Primary School** on Richmond Road, enabling alterations, redecorating and plumbing work etc to commence. It is now that the visible exciting work can begin, for example changing the toilets to a size more suitable for adults than the previous use by children! It is hoped that the meeting rooms and cafe will be the first to be in use, whilst further funding is raised for the cinema equipment.

We shall be in the Market Place on **Friday 7th June** to answer questions about the project and to introduce our 'Friends of TOSH' scheme. By becoming a Friend and paying a £10 annual subscription towards further costs you would be demonstrating your interest and commitment towards the cinema and community centre. Or if you just want to know more or perhaps are thinking about volunteering please come and have a chat. If you can't get on that date, you are welcome to telephone me **Jeannie Bishop (622023)** or email leyburnarts@gmail.com for more information

Bainbridge School News

Tag rugby

Two weeks ago we went to tag rugby it was a fine hot sunny day! We won a few games and lost some. There were about twenty other teams, we were one of the smallest schools there but still managed to make up two teams, Bainbridge A and Bainbridge B. The referees were from Wensleydale School and did a great job. It was a good fun day and we all enjoyed it even the teachers.

Jack and Matthew

SATS

Year 6s were busy doing SATS just last week, we were worried and scared but then when it came to doing them it wasn't so bad, they don't do much but they get us (y6s) worried every year. Most of the tests were reasonable and we hope we have done well.

Luke, Becky, Chloe, Jessica

Bainbridge Marathon

The school council have decided to raise money for the school. The money is to buy more equipment and more iPads to work on. We like iPads because they are a lot quicker than computers. The whole school is going to run a collective marathon on the 4th of June in our P.E session. Each year group will have a certain distance to run. Each child will have a sponsor form to get sponsors for the marathon. We will dress up as super heroes/heroines.

Lauren and Jamie – School Council

Elections

We have been learning about how elections work. The juniors were split up into groups of 4. We had to create statements for Health, Environment, Local Area and Education. Some ideas were good like more Doctors and some were a bit daft like cutting down fruit trees and only having apples, kiwis and strawberries. Our names were the Funky Chickens, Mpeas, V.I.P club, Little Brain Waves and McCoy's. Then on Friday 17th we put a polling station up in the school hall. We did elections and put a cross next to who we wanted to win and we had a card that said all of the group names. We had to fold the card and put it in a box to be counted up by Lisa Baldwin and Mr Moore. The winners were the V.I.P club.

Lucy Allen and Sophie Handley

Letter by email

Dear Mr Watkinson,

In the early '90s my dad took me camping to Bainbridge Ings campsite. Being from the flatlands of Essex and never having been north before, the landscape of the Yorkshire Dales was a revelation to me. On that and subsequent trips we went up Penyghent, Ingleborough and Wharfedale, and did many other walks. But I was particularly fascinated by Yorburgh, benignly overlooking our tent. I thought I could glimpse some structure up there, and always wanted to go up there to see what it was (it is unfathomable what 11 year olds can become fascinated by!). But not being one of the 'classic' walks, my dad was not to be persuaded.

Finally, after 23 years of never forgetting that hill, at the weekend I pitched my tent once again at Bainbridge Ings and walked up Yorburgh, and at last visited what turns out to be a mast and a little derelict building.

Far from being disappointed, I was even more intrigued. The mast had a sign on it informing the reader that it is for measuring windspeed for

paragliders (and, since it is nothing to do with windfarms or mobile phones, to kindly refrain from assaulting it!). But what the purpose of the

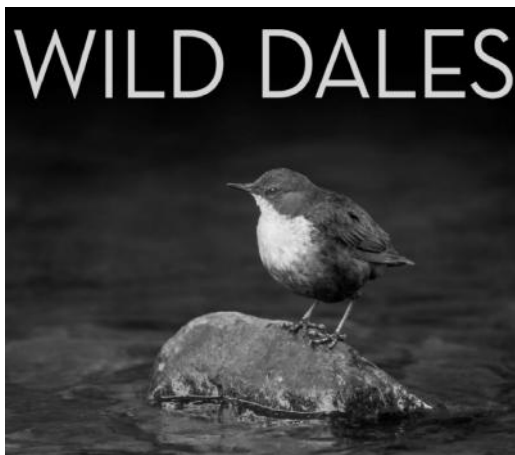
little building might have been is unclear. The remains of what I guess must have been a previous mast are inside it: circuit boards, metal

cabinets, metal poles, all rusting away. I wondered if the building might have been part of another, earlier mast installation.

When I got home I searched on Google for 'Yorburgh' and 'mast' without much hope of success, but it turned up Issue 179 of your newsletter, in which, in an article entitled 'Best Foot Forward' There is the tantalising promise, 'We'll recount the details of the old mast on Yorburgh and the cable to it one of these days'.

Peter Knights

(We've replied to Mr Knights, directing him to our issue 182, July 2012, when we did! Always happy to help. Ed.)



Wildlife Photographs on Display

Stunning photographs of wildlife in the Yorkshire Dales will be on show in a special exhibition in Bainbridge over the summer. The National Park Offices will be displaying images from Carperby-based wildlife photographer Simon Phillpotts.

His exhibition will be the latest in a series staged in the reception area of the offices, which are open between **8.30am and 4.30pm, Monday to Friday.**

Richard Burnett, the Authority's Director of Corporate Services, said: "Simon has produced some amazing photographs that capture many of the special qualities of this National Park.

Simon has recently appeared on BBC's Countryfile and is in the Series 3 of ITV's 'The Dales' with Ade Edmondson. He is also a co-founder of the community-led Wensleydale Red Squirrel Group (www.wensleydalersg.co.uk), which aims to conserve and expand the range of Red Squirrels in the Yorkshire Dales.

He runs Wild Dales Photography with his wife Sarah, producing wildlife images, prints and greetings cards and running photographic workshops and short break holidays in the area.

"The Dales provide an amazing variety of wildlife habitats, which means I never have far to travel for some favourite subjects such as Red Squirrel, Grouse, Dipper and Hare," he said.

His images have been highly commended in the British Wildlife Photography Awards and appear regularly in the national and local press, in magazines and on greetings cards, including for the RSPB, RSPCA and Friends of the Earth.

The exhibition runs until August 1st



Heavens Above

The Sun reaches its highest point over the northern hemisphere on June 21st. It's the Summer Solstice – Midsummer's Day – the time when we get the longest hours of daylight and the shortest nights. In fact we won't get true darkness again until well on into August so here's hoping we get some better weather to let us make the most of the long evenings.

A few nights after June 23rd we experience a so-called 'Mega Moon' – the biggest and brightest full Moon of the year. The main reason for this full moon's unusual size is partly due to its closeness to the Earth – a mere 357,000 kilometres away - but also because of the famous 'moon illusion' which tends to make the moon look much larger when it's low on the horizon than when it's higher up in the sky. Despite loads of theories nobody has yet come up with a really credible explanation for this curious optical effect.

The summer months are a good time for spotting noctilucent (night-shining) clouds. Look north just after twilight and with a bit of luck you might see a display of these ghostly silvery-blue streamers glowing softly low over the horizon. At around 80 kilometres up, noctilucent clouds are the highest in the sky, and are caused by ice forming around tiny particles of dust in the atmosphere.

We have two 'evening stars' during the first part of the month - Venus and Mercury, the two innermost planets. Look for them *low* over the north-western horizon soon after dark. Venus is visible all month but Mercury fades away after the 15th. The best time to look for it is on the evening of June 12th when it's at its greatest eastern elongation. You'll find it a few degrees to the upper left of Venus by far the brighter of the pair.

Last month's 'Dark Skies' presentation at the Dales Countryside Museum was well attended with visitors from as far afield as Cornwall and Russia. Thanks to everyone at the DCM for their help with organising the evening. It was organised as part of 'Museums At Night', the annual national celebration held to mark International Museum Day on May 18th when hundreds of museums, galleries, libraries, archives and heritage sites open their doors for special 'after hours' events. Have clear skies!

WHAT'S ON LISTING; please add these dates to your Diary

- | | |
|--|--|
| <p>1 'Young Voices' concert. Aysgarth Institute. 7.00pm See p.10</p> <p>1 David Chapman Memorial Trophy. 2.00pm; Hawes Football ground</p> <p>1 Men's Prayer Breakfast; 8.30am, Sycamore Hall. Further details from Ian Ferguson. 650685</p> <p>2 Gayle Mill Demonstration Tours. 11.00am and 2.30pm £12. Under 16 free</p> <p>2 Open Gardens; Bolton Hall for St Teresa's Hospice. See p.26</p> <p>2 Hawes Cricket Club at home to Kirklington. All games from 2.00pm</p> <p>2 Aysgarth Methodist Church at Bainbridge; 10.30am</p> <p>4,5 And every Tuesday and Wednesday In June. Tea, Scones and Stalls; for St Margaret's, Hawes .</p> <p>5 New to You Sale; Aysgarth. See p.15</p> <p>5 Badapple Theatre: 'Lights out Land Girls'. West Burton Village Hall, 7.30pm. Box Office: 01423 339168</p> <p>6 Business Boost Meeting. See p8</p> <p>6 Askrigg Friendly Society, Service, St Oswald's, Askrigg; 7.00pm. followed Dinner at Kings Arms.</p> <p>8,9 Charity plant sale; see p.6</p> <p>8,9 15,16 North Yorkshire Open Studios. See p.12</p> <p>8 Dry Stone Walling course; Gayle Mill, 10.30am to 4.30pm. 667320 P.24</p> <p>9 Afternoon Teas; St Bartholomew's, West Witton. Followed by Songs of Praise. 5.00pm. See p. 18</p> <p>9 Bainbridge Methodist Church at Aysgarth. 10.45am</p> <p>9 Hawes Cricket Club at home to Kendal.</p> <p>11 Decorative and Fine Arts Society. 2.00pm. See p. 9</p> <p>11 Hawes Cricket Club AGM. 7.30pm Fountain Hotel, Hawes.</p> <p>11 Extra-ordinary General Meeting of Hawes Cricket Club. See p. 7</p> <p>11 YDNPA Planning Committee. 1.00pm</p> <p>12 Demonstration on Bread Making by Rev Ann Chapman; Askrigg Village Hall. 7.00pm.</p> <p>12 LVA Charity Bike Ride, Leyburn; 10.30am to Hawes. 3.0pm(ish) Sponsor your landlord! See p.15</p> <p>13,27 Wensleydale Country Market; Meet in Leyburn Methodist Church Hall; 10.00am to 12.30pm</p> <p>14 Wensleydale Tournament of Song, AGM, 7.00pm. See p.3</p> | <p>15 Mobile skip; Gayle Green. 9.00am</p> <p>15 "Rising" live in Fountain Hotel for the Midsummer Bash</p> <p>15,16 Bolton Castle; 10.00am to 5.00pm. Fathers Weekend. Chance for fathers to try archery and hold falcons. Father's Day Card making. Bring your cameras!</p> <p>15 Charity Concert, St Andrew's, Aysgarth. See p.26</p> <p>16 Richmondshire Orchestra in Askrigg.</p> <p>16 Marsett Chapel anniversary; 'Young Voices'. 2.00pm</p> <p>18 Middleham and Dales Local History Group. See p.13</p> <p>19 Carperby W.I. Meet in Village Institute; Robin Wilson—Poisons in your garden. 7.30pm.</p> <p>19 Summer meadow walk. Meet Askrigg, 10.30am. Booking: 01524 251002</p> <p>20 Hawes W.I. visits Bainbridge W.I.</p> <p>22 Hawes Gala</p> <p>22 Wardle Community Band; St Margaret's Hawes. See p.15</p> <p>23 Table Top Sale; Market House for Hawes School</p> <p>23 West Burton Circular Walk. Meet Aysgarth Falls N.P. Centre, 1.00am</p> <p>25 YDNPA Full Authority AGM, 10.30am</p> <p>25 Coffee Morning and stalls, Hawes Methodist rooms, 10.00am to noon</p> <p>26 Upper Dales Family History. See p.8</p> <p>26 Lancaster and Morecambe outing. See p.8</p> <p>27 Film at Thornborough Hall: 'Enchanted April'</p> <p>27 Wildlife of Snaizeholme. Meet Mirk Pot 2.00pm</p> <p>27,29 First Responders' Meetings. See p.4</p> <p>29 Thornton Rust Flower Festival. See p.7</p> <p>30 Gayle Chapel Camp Meeting with Hawes Band. 2.00pm</p> <p>30 Bainbridge Methodist Church at St. Oswald's, Askrigg. United Service</p> <p>30 Hawes Cricket Club at home to Thorp Perrow</p> <p>30 Pen Hill Benefice Service; St Oswald's, Castle Bolton</p> <p>30 Songs of Praise; Thornton Rust Mission Room. 6.30pm.</p> |
|--|--|
- July**
- | | |
|--|--|
| <p>7 Family photographs . See p.6</p> <p>9 Trip to Kilhope. See p. 5</p> | |
|--|--|



DCM What's On

27 April–30 June: An exhibition of work by artists, sculptors and photographers inspired by the Dales

June

- 2 Pathfinder Intermediate 10.30am to 4.30pm. A full day's navigation course, mainly outdoors and covering more topics than the introduction including map reading, grid references and compass work. Not suitable for children. £10
- 4 Meet a Ranger. 2.00 to 5.00pm. A range of craft activities for children taking place throughout the day. Museum admission charges apply except for dads on their special day!
- 16 Fathers Day activities; 10.00am to 5.00pm. A range of craft activities throughout the day
- 23 Build a nest box. Led by Rangers and volunteers. Booking required
- 29 2.00 till 4.00pm. Learn how to make elderflower cordial in 30 minutes
- 30 Get busy with bumblebee, butterfly and bug craft activities. £3.

For further information on any activity 'phone **666210**

Drop-off points and contacts

for news, articles, reports, letters, what's on dates, competition entries, suggestions and comments:

Hawes:	Alan S. Watkinson, Burnside Coach House.	667785
Gayle:	Lorna Ward, East House	667405
Bainbridge:	Sylvia Crookes, 3, Bainside	650525
Askrigg:	Rima Berry, 8 Mill Lane	650980
Carperby:	Margaret Woodcock, Bella Cottage	663488
West Burton:	Nadine Bell, Margaret's Cottage	663559
Aysgarth:	Hamilton's Tearoom	663423
Redmire:	see Carperby above	
Thoralby:	Sandra Foley, Shop	663205

New Faces at t'Mill

Gayle Mill's heritage education and training project which began over two years ago has been successfully managed and delivered by Samantha Jennings. The opportunity for schools to visit the Mill and learn about its significance in local history, textile manufacture, electricity generation and wood working has proved to be popular with pupils, parents and teachers alike. These enjoyable visits have been tailored in line with the National Curriculum with specific reference to History, Science, Art, Design and Technology. Samantha has also visited schools either at their assembly or for a specific class to demonstrate (with a model) how water power works. The project is also popular with young people and adults who have enhanced their knowledge of traditional crafts through various demonstrations and hands on workshops.

Everyone associated with Gayle Mill wishes Samantha well as she is soon to begin her maternity leave. In order to complete the project (whilst Samantha is otherwise occupied) additional funding has been sourced from the Yorkshire Dales LEADER programme to employ two part time staff. Sue Stokes and Laura Hodgson will work together to enable Gayle Mill to deliver the rest of the programme.

Sue has been involved with Gayle Mill Trust in recent years as a volunteer and will mainly be working on running the Heritage Skills events. Laura is new to the team and will mainly be running the education side of the project, working with local schools.

There are a variety of heritage skills courses planned at the mill for the rest of the year including blacksmithing, stone slate roofing, printing a cotton bag and other heritage crafts. You can book a course or plan a school visit by contacting Sue or Laura at Gayle Mill on **667320** or learning@gaylemill.org.uk

COMING UP:

An Introduction to Dry Stone Walling -
Saturday 8th June, 10:30am – 4:30pm
£20.00 per person.

Hawes Surgery Rota

www.centraldalespractice.co.uk

Tel:- 01969 667 200

	3rd June	*10th June Dr Jones on holiday	*17th June Dr Jones on holiday	24th June
	a.m p.m	a.m p.m	a.m p.m	a.m p.m
Monday	Dr West Dr West	Dr Brown Dr Brown Antenatal	Dr Brown Dr Brown Antenatal	Dr Jones Dr Jones Antenatal
Tuesday	Dr Jones Dr Jones	Dr West Dr West	Dr West Dr West	Dr West Dr West Dr France Dr France
Wednesday	Dr West Dr West	Dr Brown Dr Brown	Dr Brown Dr Brown	Dr West Dr West
Thursday	Dr Jones Dr Jones	Dr West Dr West	Dr West Dr West	Dr France Dr France
Friday	Dr Holmquist Dr Holmquist	Dr Ashcroft Dr Ashcroft	Dr Ashcroft Dr Ashcroft	Dr Jones Dr Jones
Saturday	Emergency Doctor	Emergency Doctor	Emergency Doctor	Emergency Doctor

Surgery Times:- Monday, Wednesday, Thursday & Friday 08.45am to 10.15am & 5pm to 6pm

Tuesday 08.45am to 10.45am & 1pm to 4pm

All evening surgeries & the Tuesday afternoon surgery by appointment *only*

Aysgarth Surgery Rota

www.centraldalespractice.co.uk

Tel:- 01969 663 222

	Week One	Week Two	Week Three	Week Four
	3rd June	*10th June Dr Jones on holiday	*17th June Dr Jones on holiday	24th June
	a.m p.m	a.m p.m	a.m p.m	a.m p.m
Monday	Dr Jones Dr Jones Dr Brown Dr Brown	Dr West Dr West Antenatal	Dr West Dr West Antenatal	Dr France Dr France Dr West Dr West Antenatal
Tuesday	Dr West Dr West Dr Brown Dr Brown	Dr Brown Dr Brown	Dr Brown Dr Brown	Dr Jones Dr Jones
Wednesday	Dr Jones Dr Jones	Dr West Dr West	Dr West Dr West	Dr Jones Dr Jones
Thursday	Dr Ashcroft Dr Ashcroft	Dr Brown Dr Brown	Dr Brown Dr Brown	Dr West Dr West
Friday	Dr West Dr West	Dr West Dr West	Dr West Dr West	Dr France Dr France
Saturday	Emergency Doctor	Emergency Doctor	Emergency Doctor	Emergency Doctor

Morning surgery Times:- Monday to Friday 9am to 10.30am (no appointment necessary)

Evening surgery times:- Monday to Friday 4pm - 5.30pm (appointments *only*)

Swaledale Festival

June events in our area.

Sunday June 2nd: Festival service, Gunnerside Methodist Church, **11.00am**

Sheep Pen Productions 'Deck Chairs', Gunnerside Village Hall **4.00pm**

Monday June 3rd: Wensleydale Walk, 8.5miles. Meet Bolton Hall gates, Wensley. **10.30am**

Prima Volta Ensemble, Wensley Church **4.00pm**

Hallé soloists, St Oswald's Askrigg, **8.00pm**

Wednesday June 5th: Muker Silver Band in Muker Village Hall, **8.00pm**

Friday June 7th: Hawes Siver Prize Brass Band, St Margaret's Church **8.00pm**

'Façade'- a Wensleydale Entertainment, première, St Andrew's Aysgarth, **8.00pm.**

Full Festival details are available at T.I.Cs or by telephoning: 01748 880018

Beware Grazing Sheep

Please be aware that there are now sheep grazing in the top church yard at St. Margaret's Hawes. Whilst these keep the church yard tidy, they are likely to eat any flowers left on the graves.

It is suggested that no further flowers are left until the summer is over and the sheep are moved.

Open Garden

Bolton Hall, Wensley.

Sunday 2nd June 2-5pm

In aid of St. Teresa's Hospice

£2.50 (young children free) Afternoon Teas

Charity Concert

Leyburn Band is presenting a charity concert at Aysgarth church at **7.30pm on Saturday, June 15th.** Admission £6 and free for those 16-years and under. The proceeds will go towards supporting the only school for the blind in the Gambia. There will be refreshments.

Pip Land