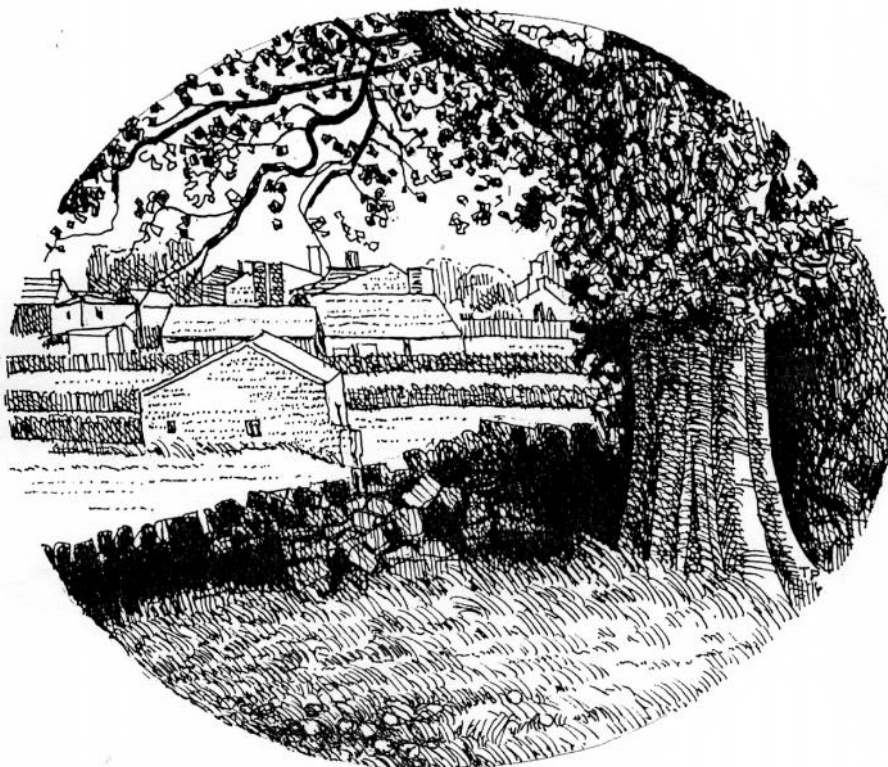


THE UPPER WENSLEYDALE NEWSLETTER

ISSUE NO. 185
OCTOBER 2012

Donation please:
30p suggested or more if you wish



Approach to Burtersett from the west. Tom Purvis

Published by

The Upper Wensleydale Newsletter
Burnside Coach House,
Burtersett Road, Hawes DL8 3NT

Tel: 667785

e-mail: alan.watkinson@virgin.net

Printed by Wensleydale Press

Committee: Alan S.Watkinson,
Barry Cruickshanks (web), Sue E .Duffield,
Sue Harpley, , Alastair Macintosh,
Neil Piper, Janet W. Thomson (treasurer),
Peter Wood

Final Processing: Sarah Champion, Adrian
Janke

Postal Distribution: Derek Stephens

**Upper Wensleydale
Newsletter**

Issue 185—October 2012

Features

Editorial 3

Anyone for Tennis 18

Doctor's Rotas 24

A Walk around Wensleydale 5

Gaping Gill 14

Schools' Collaboration 8

Surgery News 24

What's On 23

Plus all the regulars

PLEASE NOTE

This web-copy does not contain the commercial
adverts which are in the full Newsletter.

As a general rule we only accept adverts from
within the circulation area and no more than
one-third of each issue is taken up with them.

Advertising

Boxed adverts: £6, £12, £18

There is a big reduction for six issues or
more, so for six issues the totals are:

£25, £50 or £75

Greetings etc. £2.00

What's ons (non-commercial) are free

Contacts for adverts:

For Hawes area and westward:

**Barry Cruickshanks, Ashfield, Hardraw:
667458**

For elsewhere:

**Sue Duffield, Fellside,
Thornton Rust: 663504**

Whilst we try to ensure that all information is
correct we cannot be held legally responsible
for omissions or inaccuracies in articles, ad-
verts or listings, or for any inconvenience
caused. Views expressed in articles are the sole
responsibility of the person by-lined. Articles
by committee members carry just their initials.
We appreciate being asked before any part of
the Newsletter is reproduced

**THE NOVEMBER ISSUE
WILL BE PRODUCED ON
OCTOBER 24TH AND
25TH.**

**DEADLINE FOR COPY:
THURSDAY
OCTOBER 18TH**

Editorial

You know what they say about swans, that they glide along looking so serene but beneath the water they are paddling like mad. It might appear like that to the casual visitor to our area. Very rural areas are comparatively quiet, calm, clean and peaceful, and we haven't as yet got loads of closed shops or businesses, but maintaining the status quo is hard work.

Of course, like many areas of the country, we are getting increasingly anxious about rising costs especially for travel and food, and the reduction in services, and add to these the dreadful weather! More seriously though, of our main industries, (arguably THE main industry) tourism seems to be being hit extra hard, especially when it is announced that money coming into Yorkshire for tourism is to be given to cities like Leeds or York. So some are really feeling under pressure and paddling hard to keep going.

Although, either directly or indirectly, our local businesses rely on the tourists, we the locals- also need to use these services rather than going elsewhere all the time. There's very little this area can't provide. And as for tourism, we can all contribute amazingly. By our open-hearted friendliness we can make the visitors return, or tell their friends to come. We can urge our shop-keepers, pubs, cafes, clubs and churches to provide a wide range of goods and services which will attract the widest possible clientele; we need visitors of all ages, backgrounds and income groups to find what they want here.

Now although this Newsletter always carries information about the Wensleydale Railway, we will go a step further today and say that we think the extension and development of this at both ends of the present passenger line is one of the best opportunities for exciting regeneration which we could wish (and work) for. Some would have thought the project would have faltered years ago! Swans paddling furiously indeed! Other such schemes countrywide bear witness to the great economic benefits brought, unthinkable when wholesale closures took place in the 1960s.

Reinstating the short distance from Redmire to Aysgarth Falls which is one of the biggest tourist honey pots in our area, we think should be a high priority. The huge developments already undertaken at Aysgarth Station are preparing for this. We know all about the difficulties from Hawes to Garsdale because of the large number

of different current landowners, but technically with the exception of one big road bridge and a beck bridge at Hawes, that section is feasible. There is also much pressure building for the reinstatement of passenger trains daily (as opposed to just Sundays and Bank Holidays) from the Settle to Carlisle line at Hellifield to a wide range of Lancashire stations and including Manchester Airport. Maybe we have thought for too long that we have the scenery and the 'away from it all' and that will suffice in bringing the tourists. Not true. However, up and down the Dale in the various villages, as well as the determination of the Wensleydale Railway workers, there is new life and new ideas, and new websites (including our own) which are increasingly where people go to learn about an area.

We've to use every opportunity, paddling like mad, to tell the world what a great place it is to live in and to visit. We won't mention the downsides this month.

Footnote Memories were stirred by the article last month about the old Quaker Meeting room in the middle of Hawes. Latterly it was known as the Welfare Institute and Kit Calvert provided an opportunity there for young people not old enough to go in the pubs. Downstairs there was table tennis and upstairs on the balcony a small library. There was also a billiards table, but George Sumner tells us they had to use special short cues as the space was a bit small!

Be Warned!

The Coal Road. Because of use by logging trucks, this high route from Garsdale Station over to Dentsdale is becoming dangerous for ordinary cars.

The wheels of the heavily-laden trucks have pushed down the road surface to such an extent that if great care isn't taken the 'hump' between the hollows is catching on the underside of cars in quite a few places.

'Dinner at the Hall'

A Three Course Meal
with Guest Speaker Len Scott
at Thoraby Village Hall
Saturday, 20th October
7.00 for 7.30pm

Tickets £15 obtainable from
Rona (663076) or Brian (663565)

Competition Answers

Farm implements and equipment

- | | |
|------------|---------------------|
| 1. Wagon | 7. Manure spreader |
| 2. Tractor | 8. Sprayer |
| 3. Sickle | 9. Harrow |
| 4. Rake | 10. Plough |
| 5. Flail | 11. Slurry agitator |
| 6. Baler | 12. Thresher |

October Competition

Find the missing middle word. Most have a local connection.

Example: York _____ horse

York SHIRE horse

Clough	_____	dance
Hawes	_____	game
Castle	_____	priory
Northern	_____	soundings
Arch	_____	dale
Stone	_____	martin
Temple	_____	stead
Off	_____	sign
White	_____	top
Black	_____	shooting
Cycle	_____	marking
Hang	_____	stonesdale
Ask	_____	house
Saddle	_____	gammon

Upper Dale Family History Group

The next meeting of the Upper Dales Family History Group is at **2.00pm on Wednesday, October 24th**, in Fremington Sunday School near Reeth, when Keith Sweetmore from the North Yorkshire County Records Office will be speaking on 'The Beldi Hill Dispute', the famous 18th century court case over mining rights in Upper Swaledale. The Upper Dales Group is a branch of the Cleveland Family History Society; entry is free for members and non-members are very welcome at £2 each. For further details see the website at www.upperdalesfhg.org.uk or contact: Tracy Little 01748-884759

Have You Been Here?

I've been in many places, but I've never been in Cahoots. Apparently, you can't go alone. You have to be in Cahoots with someone.

I've also never been in Cognito. I hear no one recognizes you there.

I have, however, been in Sane. They don't have an airport; you have to be driven there. I have made several trips, thanks to my friends, family and work. I live close so it's a short drive.

I would like to go to Conclusions, but you have to jump, and I'm not too much on physical activity anymore.

I have also been in Doubt. That is a sad place to go, and I try not to visit there too often.

I've been in Flexible, but only when it was very important to stand firm.

Sometimes I'm in Capable, and I go there more often as I'm getting older.

One of my favourite places to be is in Suspense! It really gets the adrenalin flowing and pumps up the old heart! At my age I need all the stimuli I can get!

And, sometimes I think I am in Vincible but life shows me I am not.

People keep telling me I'm in Denial but I'm positive I've never been there before!

Fire Station

Hawes Fire-fighters would like to thank everyone who turned out at their Open Day on Sunday August 26th. The barbeque was a huge success, as were the tombola and raffle, owing to the fantastic support of all the businesses who donated so many great prizes.

Despite the rain which came after a few hours, support stayed strong and the kids continued to enjoy the bouncy castle.

Thank you to everybody who helped on the day, especially the non-fire-fighters who gave up their time to help raise money in so many ways. The total raised for the Fire-Fighters Charity was £915, and we look forward to doing it again soon.

Michelle Barnes

West Witton Harvest Festival

Sunday 7th October at 11.00am in church
followed by

Harvest Festival Lunch in the Village Hall
and

Auction of Harvest Festival Produce

Information Day on Historic Buildings

Historic buildings in the National Park will be the focus of attention in a special October event.

Called '*Caring for Your Historic Building*', the annual day school is organised by the National Park Authority and will be held in the Memorial Hall in Dent on **October 13th from 9.30am to 5.00pm.**

Gaby Rose, the Building Conservation Officer, said: "This event is very popular and, although it is aimed primarily at owners, managers and occupiers of historic buildings, there is plenty to interest people who just want to learn more about the architecture of the area or old buildings in general. "Places are limited and it usually sells out, so I would advise people to book early." Illustrated talks by leading specialists will cover the characteristics of the historic buildings in the area, how they have developed over the years, how they perform and how they are best cared for. Other topics covered during the day will include design, repair, maintenance and energy sustainability issues as well as bats and building work. And there will be a guided walk through Dent to look at many of the architectural and historic features of this outstanding conservation area.

Participants will also have the opportunity to interact with the speakers and have their specific problems or questions regarding old buildings discussed as part of the programme. In addition, there will be practical demonstrations showing how traditional lime mortars and plasters should be prepared and applied as well as using Limecrete - an innovative, eco-friendly alternative to cement. The historic buildings information day costs £15, which includes refreshments and a buffet lunch, and full details of the programme can be seen at www.yorkshiredales.org.uk/caringforyourhistoricbuilding2012

Anyone wanting more information or to book a place should email: info@yorkshiredales.org.uk or phone

Gaby Rose on 652354.

Upper Wensleydale Ladies Luncheon Club

Wednesday October 17th from noon

Rose and Crown, Bainbridge, when after lunch, Helen Bainbridge will speak on "The Treasures of Swaledale Museum".

A 60 mile Walk Around Wensleydale

to celebrate the 60th Anniversary of the Wensleydale Society.

A new and attractively illustrated book by Diana Jolland celebrates the 60th anniversary of the Wensleydale Society which was formed in Aysgarth in 1952.

The 60 mile walk can be completed in one go by keen long distance walkers or at a more leisurely pace and in sections of 5 to 10 miles for the more faint-hearted! In devising the walk Diana has chosen the widest variety of stunning scenery which will stop you in your tracks. There is an easy start in Leyburn along the Shawl, dropping down into Redmire, and then up to Bolton Castle to enjoy footpaths on the high ground for tremendous views over Wensleydale, calling at Askrigg and Hardraw before walking a short section of the Pennine Way and then through pretty Cotterdale. From here a climb up to the Highway, leaving Wensleydale behind, and enjoying the wild views of the Mallerstang Valley; then over rugged moorland to Garsdale Station where the return walk starts. There is a short stretch on the new Pennine Trail and then on to Mossdale, passing through meadows leading to Appersett and Gayle. From here the route goes to Burtersett and up on to the Roman Road, via Semerwater and Bainbridge before going along a high scar to descend to Worton, then uphill to Thornton Rust and an exhilarating moorland walk to Thoraby. Enjoy the lovely views of Bishopdale walking over to West Burton Falls and on to the packhorse route of Morpeth Gate, down to the Templars' Chapel, on to Swinithwaite and beyond to stroll along the riverbank and return to Leyburn.

The maps and drawings are created by David Nash and the book, priced £4.00 can be purchased from Welcome to Leyburn or The Walking Shop, Leyburn from 5th October. The book will make an excellent stocking-filler and all profits will go to the Yorkshire Air Ambulance.

The next Wensleydale Society lecture is on **Friday 2nd November** at West Burton Village Hall when Paul Sheehan, Yorkshire Dales National Park Authority's Access Ranger for Lower Wensleydale, will speak on ***Dormice Within Freeholders Wood.***

Ninety years in Hawes

Hawes W.I. started life on Monday 26th November 1923 at a meeting in the Market House attended by 25 people. Mrs Adams of Rillington spoke about forming a group. Officers were appointed and it was agreed to meet on the third Thursday of the month (which we still do) in the National School at 7.00 pm. The first normal meeting took place on 16th January 1924 when Mrs Housman of Hawes and Mrs Storey of Askrigg demonstrated rug-making. The minutes record that it was a stormy night but they had a 'splendid gathering' with 37 present, of which 9 enrolled as new members. Fortnightly sewing meetings were held to prepare for a sale of work in August. One of the hostesses at a sewing meeting held on March 6th was a Miss M. Burrow. (She kept her membership even when she could no longer attend.) There were 42 present.

The programme for the rest of the year included leather work and toffee-making demonstrations, a white elephant sale, a garden fete, a play 'The Village Wedding', a cake competition (ingredients to cost no more than 1/-), a wireless demonstration and a talk on Home Nursing by Dr. Watt. In November on their first anniversary there were 64 members. Looking at the programmes of the 1930s, 40s and 50s, the subjects and activities were very much in keeping with the current needs and interests of women, who were keen to come together to have fun even when resources were limited. In 1947 meetings were held in the County Schools when Mrs J. Mason was President. The programme lists:

- 'Make Do and Mend'
- Bring and Buy
- Cookery Demo: Fish dishes
- Competitions: A Bunch of Wild Flowers; A Piece of Painted Pottery; A Plate of small, decorated cakes. The present venue is the Methodist Chapel rooms which we rent each third Thursday from 7.00pm. Because our membership is small we can no longer have a drama group, musical evenings, concert parties or a monthly competition. On the positive side, we do make an effort to engage in projects which benefit the local community. Our horizons are enlarged by attending events organised by the North Yorkshire West Federation of W.I.s and the High Dales Group to which we belong. We appreciate having a mix of both local speakers and those who come from further afield. We are linked with the charity Associated Country Women of the World which gives practical sup-

port to women in rural situations less advantaged than in Britain. The W.I. is neither party-political nor denominational. All-comers are welcomed into a happy environment where friendships are formed and new skills and experiences shared.

In 2013 Hawes W.I. is due to celebrate its 90th anniversary. The present membership numbers 16. We would be very pleased to welcome new members in our anniversary year.

Jean Day

Bainbridge Primary School and Nursery PFA

Table Top Sale

Saturday 10th November 2012

10.00 - 2.00pm

Bainbridge Chapel

Bargains galore, Cake stall, Raffle,
Refreshments

To book a table (at £5 per table) please contact

Melanie (650037), Angela (650212) or

Amanda (650539)

All proceeds to Bainbridge Primary School and
Nursery

Exhibition

at the National Park offices, Yoredale,
Bainbridge

"Working the View"

*Exploring the relationship between the
Yorkshire Dales landscape and its
Guardians.*

During October 2012

open 8.30 am to 4.30 pm Monday to Friday

"Working the View" is a project by Mark Butler (photographer) and his sister Sarah Butler (writer), which explores the relationship between the Yorkshire Dales landscape and its guardians.

"Working the View" is well over halfway to completion and this is the first 'work in progress' exhibition. The project is supported by the National Lottery through Arts Council England.

For more information about the project and the exhibition please telephone **Lesley Knevitt** at the National Park on **652326**.

The Moorcock Show

There were two firsts for the Moorcock Show which took place on Saturday 1st September. Firstly it didn't rain and secondly we had more people through the gate than ever before. Nobody spotted the mystery celebrity but the star of the show was the champion of all breed, a mule gimmer owned by George Shield from Ravenstonedale, whilst the reserve champion was a blue faced Leicester Tup owned by Brian Horner from Garsdale.

Colin Luckett



National Trails Uncertain future.

Proposals from the Government announced during the summer are that responsibility for National Trails, such as the Pennine Way and Dalesway, could be handed over to local authorities and voluntary groups, both of which are hard-pressed. It would mean that the Pennine Way for example would be managed by 10 different councils and there is concern about its upkeep and quality.

West Burton School News

The school holidays were a well-needed break for all the students and staff at West Burton School. It was good that everybody felt refreshed for the new term and ready to work hard and play hard.

As the new school year starts, new people start as well. Scott Winspear and Will Handley have joined Class 2, and have settled in exceptionally well. Miss Taylor, a new teacher, has joined both classes, but mostly she works with Class 1. We have new reception children, six of them, who have settled in very well too!

On Tuesday the 11th, Carly from the Konflux Theatre Company, came to direct Class 2 to perform a play in a day, called Albie's War.

It was a tough challenge performing this advanced play script, but we acted it out to the villagers of West Burton, and they loved it!

Class 2 has taken on a new motto, which is: *Always look on the bright side of life!*

We are looking forward to our theatre trip and the Harvest Festival, and much more!

Jack Greenslade and Joe Beaton, Year 6

On the occasion of their Golden Wedding, Thomas and Doreen would like to thank family and friends for the lovely cards and flowers they received. Also grateful thanks to Jackie for an excellent spread of food at the party.

Not forgetting our good friend Doris for the cake decoration.

Special thanks to the family for their help in decorating the Gayle Institute and friends for transporting tables and chairs and providing car parking. A total of £475 was kindly donated to the Yorkshire Air Ambulance.

Auction Mart Harvest

This annual event took place on Sunday evening September 16th with the Hawes Silver Prize Brass Band.

The collection of £143 was the first donation towards the Hawes Churches Together Charity for the next 12 months: **The School in Box** scheme, part of UNICEF.

Collaboration

Askrigg and Bainbridge Primary Schools

During the summer term, the Governors of Askrigg and Bainbridge Primary Schools agreed to form a *Collaboration*, with effect from 1 September 2013. A *Collaboration* is a partnership between two or more schools, led and managed by one Executive Headteacher.

This opportunity has arisen following the resignations of both Headteachers earlier this year. Elaine Hopwood has retired from Bainbridge Primary, and Gill Woods at Askrigg Primary has moved to another headship nearer home. This situation gave both schools a unique opportunity to consider their futures.

For this academic year only both schools have set up their own interim arrangements: Clare Bastow is the full time Acting Head of Askrigg. Bainbridge have formed a one year collaboration with Middleton Tyas C of E school and have Maxine Price as the Executive Head.

These arrangements allow sufficient time for the Governing Bodies of both Askrigg and Bainbridge Schools to advertise and recruit a permanent Executive Headteacher in readiness for September 2013. The Executive Head will spend half the week in each school, planned over time to meet the needs of each school.

In June, joint meetings were held for parents and governors to discuss the future of the two schools and to explore the benefits of entering into a *Collaboration*. The feedback from parents has been very positive. Future prospects are great for everyone. There will be new opportunities for the pupils to learn and achieve well in their academic, personal and social development and staff at both schools will be able to share their expertise and good practice as well as aspects of their professional development. The two schools will remain separate and retain their current names with individual identities and ethos. Each school retains its own governing body but a Joint Development Committee has been set up comprising 4 representatives from each governing body to lead on developments within the collaboration. The governors, staff, parents and pupils are all looking forward to a busy, interesting year, and an exciting future.

Sam Parfitt, Di Clegg, Chairs of Governors

Pie and Peas Supper

At Wensleydale Creamery
on **Friday 26th October**
Adults £7. Children £4. From 6.30 pm.
Followed by a Quiz.

Tickets available from 'The Old Sweet Shop, Hawes' and 'Whites of Wensleydale, Hawes'
Proceeds towards essential repairs at St. Margaret's, Hawes.

Kirkby Stephen Grammar School

A Co-operative Academy

Specialising in Sport and Applied Learning
'An Outstanding School' - Re-confirmed by Ofsted in March 2011

YEAR 6 OPEN EVENING

Tuesday 9th October 2012

School Hall from 6.45 pm

All parents and students are invited to attend our Open Evening. We hope this will help you make the right decision about secondary school education.

You will find out about what KSGS can offer in terms of:

Consistent excellent academic success and high quality teaching across all year groups;

2012 Results: 95% gained five A*-C passes at GCSE level; 100% pass rate at A level

Personalized pastoral support

Excellent transition support

Excellent opportunities for extra-curricular activities

A Gifted and Talented Lead School

You will have the opportunity to take part in activities and tour the school. Senior Staff and Subject Leaders will be available for any questions you may have.

Refreshments will be available.

For any more information contact

Janette McWhirter, 017683 71693

or email: admin@ksgs.cumbria.sch.uk

School Website: www.ksgs.cumbria.sch.uk

Middleham and Dales Local History Group

Looking at Dales prehistory with the Muddy Archaeologist Gillian Hovell with Jim Brophy Autumn course of 3 sessions beginning on **Tuesday 16th October at 2.00pm** at Middleham Key Centre and continuing on 6th and 20th November.

In the first session Gillian Hovell will take a journey of discovery through the prehistoric ages in order to provide an overview of the different eras and set the scene for what is to come. She will also consider ancient features that survive in the landscape today – not just the large famous sites but also the small, often unnoticed ones. Gillian will be joined by Jim Brophy for the second session, and they will discuss local investigations into prehistory, including community project research and work in Wensleydale, Coverdale, Swaledale and Nidderdale. In the third session they will narrow the focus of interest further in order to take a detailed look at The Iron-Age (Nidderdale) Project.

Gillian Hovell, 'The Muddy Archaeologist', is co-leader for the Iron-Age (Nidderdale) and Prehistoric Nidderdale community archaeology projects. She is also a guide and lecturer on the Visiting the Past Tours, a professional public speaker, teacher and freelance writer. In her 'spare' time she is currently working towards a doctorate.

Jim Brophy's active involvement in archaeology started with a community project in Nidderdale in 1998 and has continued ever since. His view of archaeology is influenced by a lifetime of involvement with construction and engineering, including thirty years teaching in Further Education.

The fee for the 3 sessions is £15 and £20 for non-members. To register for a place on the course or for further details please contact **Tony Keates on 640436** or email: dotandtonyk@btinternet.com

Sign Language

Is there anyone in the Dale who could teach me sign language?

If so could you either please ring me

On: 650424 or email: favrach@yahoo.com

Many thanks Rachel Dechezeav



Operation Christmas Child

Last Year over one million shoe boxes were received by needy children caught up in poverty, natural disasters and wars. Individuals, groups, clubs and churches in the UK and Ireland wrapped boxes and filled them with gifts and school supplies to be given to children regardless of their background or religious beliefs.

We read of one family living in poverty in a disused railway container in Kosova the father ill and unable to work. On receiving shoe boxes last year the mother commented, "these boxes mean so much to my children - although we love them we can't afford to give them anything at Christmas." One young girl from Montenegro found a knitted hat in her box. She was delighted as her old hat had come from the rubbish dump!

Please get a leaflet from Hawes Post Office or Library. Follow the instructions as to what can be included in your box and enclose a cheque for £2.50 payable to Samaritan's Purse (or £2.50 in cash) towards transport and do Gift Aid if you can. You can also donate online. Boxes must be handed in to the Post Office or Library by **Friday, November 16th.**

Thank you **Heather and Nelson Caplin 667625**

News From the Vets

It's now the time of year for farmers to be thinking about their tups. Giving them a Tup MOT is essential to ensure optimum performance this tugging time. Don't forget we can do fertility tests as well to check their performance.

Now that the autumn seems to be steadily approaching, arthritis signs in dogs and cats will become more apparent. In order to keep them comfortable during the cold weather we will be having an osteoarthritis day to raise awareness of the condition and what can be done to help your pets regain quality of life. Please ring the surgery if you are interested in participating.

Davinia Hinde

Creamery Plans

These are the details of the multi-million-pound redevelopment plans to secure the future of the creamery. The plans submitted to the National Park Authority include a new cheese production plant, visitor centre, smoke house and offices.

The redevelopment would see all cheese production moved to the Gayle Lane site, with the firm's second dairy, in Kirkby Malzeard, handling blending, order picking and dispatching. The new building is to replace the existing structure, which was built in 1953 and give greater capacity, improved efficiencies and better standards of manufacturing.

Despite recent turmoil in the dairy trade, which has included protests from farmers angry about milk prices, David Hartley (Managing Director) said he remained optimistic about the future of the milk and cheese industry.

The facility will include a whey processing plant and better visitor facilities.

If planners back the proposal, initial work could start next year, with the main build taking place in 2014.

Wensleydale Decorative and Fine Arts Society

If you love the arts, and want to enjoy discovering more, then the Wensleydale Decorative and Fine Arts Society (WDFAS) is for you.

The Book as Art is the topic of the new season's first lecture. Dominic Riley, a professional specialist bookbinder, uses work from his favourite book artists to illustrate the potential of the book as a three dimensional art object, and brings examples from his collection of experimental book structures. His illustrated lecture is on **Tuesday 9th October at 2.00pm** in Middleham Key Centre. WDFAS hosts nine lectures throughout the year, study days and a series of visits to galleries, stately homes and gardens, and members participate in the amazing historical perspective of art history. Lectures are held at 2.00pm on the second Tuesday of the month. Lecturers are chosen for their academic knowledge and their first class lecturing ability.

Membership and further information is available from the Membership Secretary, tel. **01748 886545**. Non-members can attend up to three lectures at £5 per lecture, pre-booking is essential.

Walking for Health

October	Time	Start/Finish	
Mon 8	11:00	Sports Centre, Askrigg	B
Wed 10	10:15	Bolton Hall Gates, Wensley	I
Wed 17	10:30	Market Hall Hawes	I
Mon 22	10:15	Sports Centre, Askrigg	I
Thu 25	10:15	Bus Stop Leyburn Market Place	B
Mon 29	11:00	Sports Centre, Askrigg	A
November	Time	Start/Finish	
Mon 5	11:00	Sports Centre, Askrigg	B
Wed 14	10:30	Market Hall, Hawes	I
Mon 19	11:00	Sports Centre, Askrigg	B
Thu 22	10:15	Middleham Market Cross	B

Portas Pilot Scheme

Information has been received indicating that town teams which submitted bids in the original scheme might still receive up to £10,000 to help improve their town centres.

Accordingly, the Hawes Town Partnership, at very short notice has registered as follows: The Hawes Town Team propose to use the £10,000 to strengthen the promotion of Hawes Market Place and all of the businesses and attractions it has to offer and to strengthen the evening economy.

1. A brand and website to be developed specifically for Hawes. The website will become the key marketing tool to promote the town as a destination for visitors.
2. Development of a town guide featuring a detailed map of the whole town, a list of businesses and services and a 'shop local' incentive voucher booklet to ensure that visitors access the whole town and not just certain elements on the outskirts of the town centre.
3. A pilot shuttle service/ park and ride scheme to run from April—October 2013 during the peak tourist season to enable tourists to visit the whole of the town and also to support the evening economy by offering a shuttle service on weekend evenings to campsites, outlying villages.

Pie and Pea Supper

The Crown Inn, Askrigg

Friday October 12th from 6.30pm

Proceeds for M.S.R.C. to include a raffle (Multiple Sclerosis Research Centre)

Tickets £8.00 from the Crown Inn **650387** or

Miriam Scarr **650532**

(answer phone throughout the day)

My New Pet.

My new pet sleeps in my bed. It's on my lap when I sit in my armchair. It goes with me on the train, and when I visit friends it comes along too. It has made such a difference to my life, I felt quite sad when Carol, the computer expert who writes in the newsletter, didn't seem to like my pet very much. Who is my pet? It's my iPad. I love it so much, I wanted to tell everyone about it. And no I am not paid by Apple!

Let me take you through a day in my life. I wake up early, and there is my newspaper, downloaded on to my iPad. It costs £9 a month for The Times and the Sunday Times, compared with £9 a week for the paper version. So my iPad has paid for itself in a year. I can get all the other newspapers free, so have a quick look through them. I download my emails, google a few things, look at my bank statement if there's anything to check. I make a list of things to do, and a shopping list. If I missed a programme the night before, I can watch it or listen to it on iPlayer, or read a chapter of my book on the Kindle app – and all this before I get out of bed!

When I go to the doctor's or the hairdresser's, I can read while I wait. No need for old magazines! My family photos are stored on the iPad and the resolution is amazingly clear. I've stored the local bus timetable and the Settle-Carlisle and the Little White Bus. I've a lot of music stored too, and many radio 4 programmes. So when there's nothing decent on the radio while I am working in the kitchen, I can listen to something I downloaded earlier, or if I'm on a train or plane, use earphones to listen. When I visit the family, or go abroad on holiday, my Times is still there for me each morning. Finally, when I go to bed my pet comes with me, and to lull me off to sleep I listen to the latest edition of the Archers, downloaded earlier. Sad, but true!

Sylvia Crookes

Hardraw Harvest Festival

Sunday 7th October at 2.30pm

followed by

Parish Party in the Green Dragon

No morning service that day

The Rag Bag Challenge

We moved into Hawes a couple of years ago, but I have continued my High School education as a boarder at Lancaster Royal Grammar School. Having entered my final year at the school, I shall be a member of a team from school travelling to Naro Moru, in central Kenya on behalf of the travel company *i to i*, which has helped to send over 50,000 volunteers to the developing world. We will be there during the Easter holidays and spend seven days building homes in the community that otherwise would not be built.

It has been agreed that a significant element of the challenge to take part in this venture is for team members to raise funds to cover the cost of the trip; individually each member must raise £1200. During the summer I completed the Three Peaks Challenge, with some sponsorship to add to my fundraising. Now, I am in the process of collecting unwanted textiles and sending them to Rag-bag, in exchange for cash towards the project. This is where I would greatly appreciate YOUR help.

The company uses low grade textiles to recycle into industrial wiping clothes and good quality clothing is sent to be reused in Africa and other developing countries. All types of clothing, paired shoes, belts, handbags etc., bedding, curtains and towels are welcome, but duvets and other products which contain some form of stuffing cannot be used.

Any suitable items can be left at our house in Hawes, or at any of the Methodist Chapels in Upper Wensleydale, clearly marked for the 'Rag Bag Challenge'. Please contact me if you would like items collecting directly from your house. Thanks for your help in making this venture possible.

**Robert Park,
Wesley House, Burterset Road.**

Thank You

Liz Beresford would like to say a big thank you for all the help, support, donations, cards and presents she received for her 70th Birthday Charity Event. A generous £1,400 was raised and split equally between St Margaret's Church, Hawes and Yorkshire Cancer Care

More Computer Scams

I am sorry to say there has been a resurgence in activity in the scam world over the last couple of months. An old scam has seen a facelift and is being widely spread via internet pages. This is best avoided but if the worst comes to the worst and your computer is infected here are a few things to try before calling for help:

Symptoms:

You switch on your computer as normal and are confronted by a screen saying illegal activity has been detected – pay a fine now to be allowed to use your computer again. The screen is designed to look convincing and usually mentions a police force with official looking logos. There was an older scam that was easy to spot as it used the FBI as a threat but now the scammers have become more clever and use local police to look more convincing.



What to do:

In the words of the late, great, Douglas Adams: Don't Panic!

First: don't be tempted to pay. It won't work – they steal your money and don't even have the conscience to unlock your computer.

Second: there are various versions of this annoyance and some are easier to despatch than others. Here is the method to get rid of the easiest version: Turn off your computer (if you can do this no other way, press and hold the power switch for 5 seconds and your computer will switch off). If you normally connect to the internet wirelessly then find an Ethernet cable and connect your computer to your router by wire – the following steps will probably not work with a wireless connection. Ethernet cables are supplied with all routers. Start your computer in SAFE MODE. To do this switch on and as soon as you see the manufacturer's screen start rapidly tapping the F8 key which brings up the advanced start-up options menu. Use the up and down arrows on your keyboard to select Safe Mode with Networking and press enter on the key-

board. Your computer will start up but look a little different – this is normal. If you are asked to enter a password do so as normal.

If you get to a desktop with icons and a start button you are in luck (if you still see the police notice you probably need professional help).

Go to www.malwarebytes.org and download Malwarebytes AntiMalware and install the programme. You can use it for free but the paid -for version is cheap and is a lifetime licence. During set up it will update itself automatically and then run. When you see the window click on Full Scan and click Scan. Go away and have a drink of your choice – the scan will take some time. When finished it presents a report in a new window – you can close that. Click Show Results. Make sure all the boxes are ticked in the list (quick way is to right click and select all) and then click Fix Selected.

Finally restart your computer. If you got infected consider changing your antivirus protection. Microsoft Security Essentials is free and very good. Just be sure to uninstall any antivirus you already have installed before installing a new one.

I hope that is helpful. Any questions or comments please contact me via my website www.dalescomputerservices.com either by phone or email.

Carol Haynes

Dales Tourism Business Network

October 4th, 1.30– 3.30pm

Dales Countryside Museum

The event is designed to be useful, stimulating and fun and to provide people who have businesses in the tourism sector with chances to meet other tourism providers in the Yorkshire Dales and Nidderdale, to network, share ideas and learn from each other.

It is all about making the best of what we have and will provide some ideas for marketing on a tiny budget and they will look at how people can make the most of the autumn and winter months to maximise income now and in the future. See the website below for bookings etc.

www.dalestourism.com/events

'Days of Ure'

We have recently been handed a copy of reminiscences written in about 1998 by the late Rev. Kenneth Tibbetts, Methodist minister in Hawes from 1953-57. This extract is about train travel.

When we went to Hawes, the Wensleydale railway line from Northallerton to Garsdale was still open in its entirety, but seven months later it was closed to passenger trains. At least the section from Northallerton to Hawes was closed; officially it was still open from Hawes to Garsdale, but only one train remained to use it. This was a train from Bradford which stopped at every station en route and which railwaymen called 'Boniface'.

It arrived in Hawes at 3.25pm. and left again at 4.25. This meant that if one wished to journey westward, it was impossible to start before 4.25, and, if one was returning, it was necessary to have reached Hellifield by 2.05pm. On Tuesdays and Saturdays only, a bus went to Sedbergh and called at Garsdale station, connecting with a mid-day train. The only other public transport westward was a Tuesday bus to Ingleton. There was one other possibility, though, and that I sometimes exploited. A number of railwaymen (platelayers and linesmen) lived around Hawes and were employed at various points on the Settle-Carlisle line. When our railway line lost its service, they were left without any means of getting to work. So the railway paid for a private bus to take them to Garsdale station in time for a 7.35am. train each morning. If a member of the public presented himself in Hawes market place at 7.00am., he could, by giving the driver a tip, very, very unofficially travel on what we always called 'Charley's bus'.

By this means it was possible to be in Leeds by 9.30a.m. or in Manchester by 10.40am. Coming home was a very different matter, however; to get from Leeds to Hawes by a series of buses through Harrogate and Ripon took most of four hours. Small wonder that we saw so few day trippers!

After the line closed, the railway sometimes ran Sunday excursions from Lancashire towns to Hawes. They were designed mainly for ramblers, but dozens of people from around Nelson, Brierfield and Colne used them as an easy means of visiting relations in the Dale. They were the descendants of Dales people who had moved away to work in the textile mills when prospects in farming were poor.

October was the time of the great sheep sales, and Hawes Auction Mart (just up the road from the manse) was thronged day after day. Before the railway closed, many of the sheep were moved away by train. So, that first October, special trains were being loaded up into the small hours night after night. From the manse windows we looked down the fields at the strange sight of the signal box still lit up after midnight. We never saw it again.

Gayle Mill Activities in October

Annual Friends of Gayle Mill Outing

Mouseman Visitor Centre and Ampleforth Abbey. **Wednesday 3rd October** Price and times TBC **Booking Essential**

Demonstration Tour of the Saw Mill

Sunday 7 October 2012 11:00am & 2:30pm - £10.00 (inc. refreshments). See and hear the original 1879 water-powered Victorian wood-working machinery.

Life is like a box of chocolates at Gayle Mill

Evening talk on **Friday 12th October 2012 7:30pm** Entry £3 adults, £2 children. Join the Friends of Gayle Mill for an evening with The Little Chocolate Shop of Leyburn. Tickets can be reserved in advance however booking is not essential.

The Victorian Saw Mill Experience Weekend

Hands on course. **Saturday & Sunday 20th and 21st October, 9:30am – 5:00pm** - £250.00 (inc. lunch and materials)

Autumn Family Fun

Arts & crafts activities **Wednesday 31st October, 10:30am – 4:30pm** £2.00 entry. Make a green mill monster from recycled materials. Help us to decorate our giant haunted mill picture in celebration of Halloween.

Mr & Mrs

13 October at 8.00pm

Fountain Hotel Hawes

Doors open at 7.30p

**Tickets £5 from Waltons, Streetwise, Rhodes
Pets and Gardens, and the Fountain**

Fund raiser for Hawes Gala

My Experience of Gaping Gill

On a fine but cloudy day I parked at the Clapham Car Park and walked up the nature trail alongside the tumbling river and lake, following the path onwards, up a rocky scramble between towering cliffs and eventually on to the open moor.



At Gaping Gill site I was surprised to see quite an encampment of tents along the valley of the stream, with larger tents for booking, controlling the hoist; for police and cave rescue.

I booked my place at about noon, cost £15, signed an accident waiver form and got a wrist-band with a number on it. Mine was 105 and the board said no. 64 was just descending so I had a two-hour wait. It would have easily been possible to walk to the top of Ingleborough, but with low cloud covering the summit it wasn't worth it. I ate my sandwiches and wandered around the area (toilets provided), and came back near the hoist to sit on a rock..

We then heard that the chair was stuck at the bottom, the booking tent closed and a queue was building up. But eventually things started to move again and after 3½ hours it was at last my turn.

The organisation and safety procedures are impressive. Hard hats are compulsory. I was locked into the chair and the descent took



about one minute. The first part is very close to the rock face, then you swing out over the void and land on wet pebbles. I was immediately escorted away from the hoist area and waited for others to come down while my eyes adjusted to the gloom.

Our group of six was then given a tour of the cavern which is 300ft long, 100ft wide and 340ft deep. The pebble layer washed down over centuries is 50ft deep and in one corner we were shown where a rock fall had opened up a hole showing the limestone layer 50ft down. We had the rock strata explained and were shown the crawl hole about 10ft up in one corner where cavers can explore about **14 miles** of caves under Ingleborough.

The waterfall pouring down into the cave is beautifully lit up and the whole experience is amazing and well worth the wait.

Then it was time to take the chair back up when you get seriously wet, as part of the waterfall comes down through the same hole as the hoist.

So ended my visit to the deepest cave in Britain, followed by the walk back down to Clapham in the evening sunshine; then picking up a fish and chip supper at the Hawes Chippie I was home by about 7.00pm.

Gaping Gill is open to visitors each year in the week leading up to the August Bank Holiday plus the two weekends/ No advance booking is required but an early start might shorten the waiting time.

Sue Foster



Mystery picture. Last month's was of the fancy handgate at the bottom end of the very narrow track/footpath (Shaw Lane), south of Gayle.

A Reality Check

It's very easy to take things for granted, especially everyday, familiar things and assume they will go on indefinitely. Take St Margaret's Church for example. Standing proud above our lovely Market Town of Hawes, a landmark in the tourist postcard, giving the town an identity and a continuity. For many people it is just that; an old Victorian building with the clock which chimes and the bell that is rung to announce the Sunday and weekday services. All so familiar.

Imagine if you will, our town without its church. Closed, boarded up and surrounded by high security fences covered with large Health and Safety signs telling us to KEEP OUT, DANGER OF FALLING MASONRY etc, etc.

How will that feel? Does it matter? does anybody really care? Because this is the potential reality. St Margaret's needs huge sums of money spent on it and without the support of our Townspeople will that be possible or even worth it. £200,000 needs to be raised over and above the allotted grants.

If 2,000 people pledge 64p per week for three years our church will be safe and secured for the present and for our Community's future

Heather Pottage, Appersett

Air Ambulance Clothes Collection

Please bring bagged clothes, curtains, towels, bedding (not pillows or duvets) shoes, used ink cartridges and old mobile phones to St Margaret's Church, Hawes. Bags are available in the church.

Proceeds of the collection will be split between the Great North Air Ambulance and St Margaret's Church.

Ring Janet Middleton on **666070** if you need help getting things there.

Thoralby Shopping Trip

To Newcastle; **November 15th.**

Book as soon as possible: **663319**

Leyburn Bowling Club

On 22nd August we played our final J S W League match of the 2012 season, away to Bedale, needing a convincing victory over our local rivals, along with a couple of perhaps unlikely results in leaders Hutton Rudby's last 2 matches, to maintain our chance of lifting the league title for the first time.

Unfortunately we were disappointed to suffer a 6 - 1 defeat on the night. Hutton Rudby's scores in their last 2 games therefore became somewhat academic but for the record they won both matches and Leyburn ultimately finished second League. .

This was a disappointing finish for Leyburn but one that should not mask what was a very successful season winning 16 of our league matches and losing just 4. We had been in second place for much of the season pushing Hutton Rudby all the way, and this represented a considerable improvement on our final placing in the 2011 season. For a club with more limited resources than many others we feel that overall we have had a season to be proud of.

During the weekend of Saturday and Sunday September 1st and 2nd we held our Finals for the club competitions played throughout the season. Trophies for these competitions will be presented at our Annual Dinner at The Friar's Head, Akebar, on Wednesday 26th September. Details of the winners will appear in next month's Upper Wensleydale Newsletter.

Finally, Leyburn Bowling Club held a Car Boot Sale at Cracken House Field Farm (opposite Tennants) on Sunday 9th September. The good weather enabled the event, in aid of club funds, to be very successful and our thanks go to everyone who assisted at, or came along to, the sale -- we hope it was an enjoyable day for everyone.

Mervyn Buckley

Rhythm and Blues Evening

"No Time for Jive"

Live North East band at

West Witton Village Hall

13 October from 8.00pm

Admission by ticket only £7.50

Still a Chance to Get Cash Help

Business and community groups in the National Park still have time to bid for cash to help them start local projects.

The latest round of applications for money from the Sustainable Development Fund was launched earlier in the year and has already attracted a wide range of ideas.

And with the **October 5th** deadline fast approaching, organisers are hoping to hear about other great ideas that need a financial hand.

The Yorkshire Dales Millennium Trust has managed the fund on behalf of the Authority throughout the 10 years of its existence and has given out more than £1.75 million to 175 projects so far.

The successful projects either create local jobs or training opportunities, or improve the range of facilities and services available to local communities, at the same time bringing environmental benefits.

Peter Stockton, the National Park's Head of Sustainable Development, said: "The Fund supports new business ideas, community schemes and environment projects and is open to everyone - community groups, businesses, local authorities and individuals. It aims to achieve a more sustainable way of living and working in the National Park, while enhancing and conserving our local culture, wildlife, landscape, land use and communities.

"Over the years the Fund has kick started or helped to develop some fantastic projects ranging from the Bainbridge hydro scheme to helping the Wharfedale Beekeepers Association to re-introduce bee keeping at Parcevall Hall."

Anyone wanting more information about the scheme can visit the YDNPA's website at www.yorkshiredales.org.uk or contact: gillian.muir@ydmtd.org to discuss project ideas.

(Be quick! October 5th. Ed.)

**Happy 21st birthday
Bethany**



**October 18th
Lots of love
Mum, Dad + Prince
XXX**

National Award for Dales Countryside Museum

The Dales Countryside Museum has been given a top national award for the huge variety of attractions it offers to visitors. It was entered in the Visitor Attraction Quality Assurance Scheme (VAQAS), which is managed by VisitEngland and has a network of regional assessors who make site visits.

And the Museum has now been given the VAQAS quality mark, joining a variety of attractions countrywide ranging from galleries and children's indoor play areas to historic houses and cathedrals.

Museum Manager Fiona Rosher said: "We are thrilled to have been awarded the quality mark by VisitEngland. Feedback has indicated that people enjoy their visit and are often surprised at how much there is to see and do."

Ian McPherson, the YDNPA's Member Champion for Promoting Understanding, said: "The DCM is a fantastic resource not only for visitors to the Dales but also for locals looking to find out more about the culture and traditions of the area - a great spot for a family day out."

James Berresford, Chief Executive of VisitEngland, said: "I'm delighted that the Dales Countryside Museum has joined our Quality Assessment Scheme, and the team are to be congratulated for all their hard work"

The Upper Dales Mobile Skip Service

Saturday October 20th

Gayle Green

9.00 am - 1.00 pm

Refuse including large bulky items and recycling materials including plastic and cardboard all welcome.

WARNING - Please note that NO waste must be dumped the night before the skip visits on Gayle Green, or on the day before 9.00 am.

WHETHER or not we shall see another mass evacuation of children from the towns into our Dales countryside we cannot foretell. Certain it is that the earlier tides of evacuation brought about by the war have swept over us and receded again, leaving only a portion of their original flood behind. There are not many Dales villages now with more than a very few young evacuees, except for those privately evacuated, and even in our larger towns the number becomes smaller each month.

Apart from the primary reason for this evacuation, has any good thing come of it? Did those early and fleeting visitors gain anything from our countryside and are those who have remained any better for their sojourn in the Dales?

A number of readers have referred to this aspect of evacuation from time to time in their letters and there is general agreement that contact with the Dales countryside, although not showing any immediate effect, will in the years ahead have far-reaching—and good—results in a greater appreciation of rural Yorkshire and its ways.

One aspect may, I think, be stressed. There is an unfortunate tendency in town life to regard natural beauty as of little value; the pressure of artificial conceptions in interest and entertainment steadily increases, and while the cinema, for instance, has values, children should not (almost by force of circumstances) grow up without some knowledge of the simpler joys of the countryside.

For young people, as for adults, contact with our Dales is an antidote to so much that is feverish, strained and grubby in an

industrial way of life, and certainly an antidote to notions that form the basis of much current entertainment. At one time children grew up with a natural understanding of the simpler flowers of garden and hedgerow, it was almost their birth-right; but how many city children nowadays can read Shakespeare's poetically simple descriptions of flower and woodland scene without the feeling of an excursion into strange language?

Similarly with the wider influence of our fells and valleys, our moorland and our quiet villages, and with the rural conception of life as a whole. These things have that order of beauty and simplicity which city life continually tends to push on one side and which in the years of reconstruction and rebuilding that lie ahead will have an enhanced value. Our Dales now, through their wartime visitors, may have a potent influence on the future.

AN OPEN LETTER TO READERS

Friends. Because of the national war effort you may find it impossible to visit our beautiful dale this year. Many agencies, including "The Yorkshire Dalesman" are endeavouring to keep you in touch with the Dales and Dales products.

Wensleydale Dairy Products (Hawes) Ltd., of Hawes, will be pleased to supply you with their popular small cheeses (1lb., 2lb., and 4lb.) at moderate prices, and help to revive memories of happy days of yesterday and hopes for tomorrow.

I shall be pleased to hear from readers interested in our cheeses or in our dale.

T.C.CALVERT, Manager

(Reproduced with permission)

Anyone for Tennis?

The wonderful exhibition in the Dales Countryside Museum last month of sports and pastimes had a small photograph of the Hawes Tennis Club, so never having heard of it, I just had to make inquiries. That then, of course, led me all down the Dale; here's another example of the knowledge we're about to lose if we don't ask. There is so little evidence (or for that matter people who know) left.

In the late 1930s in our area there were tennis courts (some private) and clubs in almost all villages: West Witton, Redmire, Aysgarth, Carperby, Bainbridge, Thoraby, West Burton, Askrigg and Hawes. On May 16th, 1936 in West Burton, a Wensleydale Tennis League was formed which by April consisted of West Burton, Aysgarth, Hawes and Carperby.

Teams were to be made up of three mixed doubles with matches to be played on Wednesdays!

By 1939 the tennis 'empire' was growing and there had to be a split in the league: 1: Leyburn B, Middleham B, West Burton, Hawes, Redmire. 2: Carperby, Aysgarth Leyburn A, Middleham A, Middle-

ham C. The eminent Dr Pickles was invited to provide a cup and to join the committee. The minute book from which these details come has a gap because of the second world war until 29th April 1949 when it was agreed to 'discuss the revival of the Wensleydale Tennis League'.

From most of that time until the apparent closure in 1967 the league operated with Dr Pickles as President and Mr. J. O. Houldsworth as Chairman. Each year it seemed, league membership changed. West Burton didn't join; Bellerby, Bainbridge and Hawes came and went; and in 1951 Crakehall made an appearance. "They were very good", claimed one memory-lady!

It was noted in 1957 that 'the weather was not really favourable for tennis'. Nothing changes!

But where were these courts and clubs?

Little remains to be seen. In Aysgarth the court was originally down the lane to the river on the left at the top of the hill as you come up from the west, then just across the road from Wath Bridge (that's the footbridge that goes across to Grayford, and lastly down the lane from the Methodist Church, on Houldsworth's land. Aysgarth



Aysgarth Tennis Club 1963. Some of the names from left to right: Mr C. Riggs, Mr G. Musgrave, Mr G. Tunstall, Miss H. Tunstall, Mrs R. Shepherd, ?, Mr D. Cockburn, Stuart Cockburn, Miss A. Megginson, Mrs J. Peacock, Mrs Pickles, Mrs H. Ashton, ?, ?, ?.

wanted a hard court like Crakehall. Money was begged and raised, the court opened by Jean Cockburn's dad on August 12th 1963. The tournament was off because of rain.

In Carperby there were two courts, both hard, on land given by Lord Bolton, for them and the present football field. A hut acted as a pavilion. A court at the east end of Carperby was private.

Redmire had three courts (one hard). As you drive from the west, look straight ahead just as you are about to turn sharp left into the village. They were there where newish houses stand.

Hawes tennis court was on the community field very near Hardraw Road and approached through a stile just over the railway bridge.

In Askrigg there were two tennis courts (this is up to 1939).

Court 1: in the second field on the footpath going down to the river. (As you come into Askrigg from the west). The field is still known by the local farmer David Hodgson as the "Tennis Field".

Court 2: in the field between Parkin's Garth and Trevor Teasdale's Builders Yard. This was the Methodist Court and was known as The Wesley Guild Court. The younger members of St Oswald's Church retaliated by playing croquet

on the Vicarage lawn! (Thank you Michael Weatherald for that!)

Thoralby had a court, possibly private, on the right as you drop down the hill into the village, just before the old reading room and shop, and there was one behind the large Heaning Hall.

West Witton's was down a lane "under the town" at the Wensley end of the village just beyond the last houses, or could be approached from a footpath from the church. It is a plantation now.

In Bainbridge tennis was played behind the vets at Cupplesfield where people think the level area and remains of the changing room can still be seen and a very few people know that tennis was played in Thornton Rust at the Hall.

The most difficult to track down has been for West Burton. However it seems the court (or more?) was on land at the top of the Green on the left hand side where there was a gap (now built on) just before the Walden road.

I am grateful to the people I've pestered up and down the Dale as they've trailed through their drawers, cupboards and their memories, for this information. Most of it seems to be accurate!
A.S.W.

Sycamore News

A feeling of nostalgia came over Sycamore Hall last week when Friday's fish and chip lunch was served up in greaseproof paper and wrapped in newspapers on our plates with the traditional mushy peas; another idea from our chef, Chris. To me it was so reminiscent of the days when walking home after being to the 'pictures' with a portion of the above, bags of salt on and vinegar running down your fingers; and didn't they taste good in those days? What next, Chris? 'Swimmers' if you know what those are! I bet someone remembers

The T.V. programme, 'The Dales' and the cameras and film crew were here last Monday appropriately filming on the day that our resited summer house was officially opened by Cllr John Blackie. This finally took place after a lot of negotiations, site meetings and unseen work by Michelle our Manager, but I am sure it will be used quite a lot by our residents and their guests.

Michelle has a programme of entertainment lined up. The day this Newsletter comes out SG Productions will give another fast moving show; 2.00pm in the residents' lounge.

On November 1st our regular keyboard player Tony Hill will be here from 1.30pm. Please come along and enjoy his sounds of music from a single instrument to a full orchestra! We have a Craft Fayre on **Saturday November 3rd.**

A whist drive is held here every fortnight on a Wednesday. Please ring **0370 192 4055** for dates. A good night, good company and good surroundings are guaranteed.

D. Ramsden

Great News for Outreach Project



Patron HRH The Prince of Wales

the autumn.

The Yorkshire Dales Society has generously donated to this life-changing project which encourages people from disadvantaged and urban backgrounds to experience the Dales through activities such as walks, farm visits, conservation work and crafts. So far more than 3500 people have benefited from the project.

The donation came at a critical time when the future of the project was uncertain, and will allow YDMT to retain key members of staff, ensuring project continuity. Thanks to this financial support YDMT will continue to offer invaluable experiences in the Dales between now and autumn through a programme of activity days. It will benefit people with health problems or disabilities, or from black and minority ethnic or economically deprived communities.

Chairman of the Yorkshire Dales Society Colin Speakman commented, "We are delighted to have been able to support the splendid People and the DALES project at this most critical time. It also chimes in closely with our own work with Metro to help develop weekday summer DalesBus services directly from Bradford and Airedale into the National Park during the school summer holiday period and on Sundays until mid October."

Thanks also go to Access to Nature, Yorkshire Dales National Park Authority, City of Bradford Metropolitan District Council, Fields Studies Council and the many individuals and partner organisations involved in helping to make the project such a success so far.

Hawes Market House

The Annual General Meeting will be held on

Friday October 12th at 7.30pm

This is an open meeting for residents.

Heavens Above

Nightfall comes ever earlier in October as we head towards late autumn with full darkness falling as early as 8 o'clock by the middle of the month. Summer's bright constellations have slipped westwards away from easy viewing and the fainter autumn groups - Aquarius, Pisces, and Cetus now hold sway in the low south. Above them, about halfway up the sky, you'll find the season's principal constellation - Pegasus the Winged Horse. Its famous Square shape is very easy to pick out in this rather barren part of the heavens. Trailing away from the Square's top left-hand corner are the two diverging chains of stars forming Andromeda, the beautiful princess of Greek mythology who was rescued by the hero, Perseus, from the clutches of the dreadful sea-monster, Cetus. Perseus himself, a straggling inverted 'Y' shape of reasonably bright, white stars stands to the east of Andromeda. Her mother, Cassiopeia, the vain Queen of Ethiopia is a distinct 'W' of stars almost overhead at this time of the year. Slightly westward is the much fainter outline of her husband, King Cepheus. These four constellations are often labelled 'The Royal Family' on old star charts.

October is one of the best months to view the Milky Way - though you'll need to be well away from the street lights to appreciate its full splendour. It arches right across the sky from Aquila in the west to Auriga in the east. Auriga (the Charioteer) is the last of the main autumn star groups to put in an appearance and its bright yellow leader, Capella, is well on view by mid-evening towards the middle of the month. Capella is sometimes called The Goat; a nearby triangle of fainter stars are The Kids.

During the third week of this month there's a good opportunity to catch sight of a shooting star when the Orionid meteor shower comes to a peak on the nights of the 20-23rd. Best time to look is after midnight when the Moon will be out of the way. Orionid meteors are usually swift with extensive 'trains' and in a good year you might spot around 25 or so per hour. Finally this month, get ready for mighty Jupiter, which promises to put on a super show this year in the constellation of Taurus the Bull. Apart from the Moon and Venus the giant planet will be brighter than any other object in the night sky right through the autumn and well on into winter. Have clear skies!

Al Bireo

King's Club 2012

The Olympics and Paralympics provided a fantastic backdrop for the King's Club programme this year. Taking the theme 'On your Marks' we looked at who Jesus is through what Mark has written in his Gospel - the good news. Using a full multimedia programme supported by lots of games and activities we introduced the young people to how Jesus called people to follow him and trust him as both God and Saviour. Events in Jesus' life were portrayed in drama, commented on by puppets, revisited with visual presentations and illustrated in storytelling and quizzes. Lots of sporting imagery was used and the children took part in many games throughout the week.

The teenagers had their own programme based at Low Mill and also had the opportunity to take part in some of the outdoor activities provided by the Low Mill instructors both on site and at Semerwater. We had our own opening and closing ceremonies with a special King's Club flag but unfortunately no cauldron and flame!

Thank you to all those who supported and helped with the planning and the programme during this last year.

Here are some of the things the children and young people wrote:

'We liked King's Club because we watched a very good and exciting film. Putting the water in the bucket was good fun. We really liked singing with the puppets too.'

Grace Calvert Aged 6

'I really liked King's Club. We had lots of fun playing things like Jenga and we watched a movie every afternoon. We learnt about God but in fun ways'

Reese Scarr Aged 10

'We really enjoyed coming to King's club, playing all the games, taking part in the activities and learning how important Jesus is for some people. Thank you.'

The Extras (11-15 year olds)

The dates for King's Club 2013 are: Monday 29th July to Friday 2nd August with the Family BBQ on Saturday 3rd August at

5.00pm Again the 6 -10 year olds will be based at Askrigg School and the 11-15 year old young people at Low Mill Outdoor Centre This will be the 25th year of King's Club.

Mike Hirst

Hawes School News

Hawes School 'Coffee Afternoon'

We have been asked by Macmillan Cancer Support if we would be able to hold a coffee event on Friday 28th September. Some of the older children in Class Three have said that they would like to have a go at organising this event. It is very encouraging that children in all our different Dales schools are so enthusiastic about helping other people. We hope to hold our event between 2:00pm and 3:00pm and anyone that would like to drop in is warmly encouraged to do so.

Morrisons Vouchers

Morrisons are running their 'Lets grow for Schools' scheme again. We would be grateful if you collect them for us and also encourage family and friends to save them.

Ofsted Inspection at Hawes

At the very end of the Summer term we were inspected by Ofsted and are delighted to have been found to be good in all areas and outstanding in our behaviour and the way we promote safety. Under the new guidelines all judgements are far tighter than they were and therefore we feel this outcome is a significant achievement for us.

We recognise that we can only work with the children in the way we do, because of the wide range of community support we get, most particularly from the parents and children, so many thanks to you all.

For those that want to read the full report you can access it on-line through our website or direct by Googling, 'Hawes Primary Ofsted.

Harvest Festival

Our annual Harvest Festival service will take place in the Methodist Chapel on **Friday 26th October at 10.00am**. All welcome.

WHAT'S ON LISTING;

October

- 2 Hawes Drama group 'Audience' by Michael Frayne; Gayle Institute, 7.30pm.
- 2,9,16,23,30 Tea, scones and book stall 1.00 to 3.00pm, for St Margaret's repair fund
- 5-8 Bolton-cum-Redmire Harvest Weekend. See p.24
- 6 Men's Prayer Breakfast. Sycamore Hall at 8.30am
- 6,7 15th Century weekend; Bolton Castle
- 7 West Witton Harvest Festival and lunch See p.4
- 7 Hardraw Harvest Festival and Parish Lunch. See p.11
- 9 YDNPA Planning Committee. Yoredale, Bainbridge, 1.00pm
- 9 Decorative and Fine Arts Meeting. See p.10
- 11,18,25 Wensleydale Country Markets, Leyburn Methodist Hall; 10.00am to 12.30pm.
- 12 Pie and Pea Supper. Crown, Askrigg. See p.10
- 13 Rhythm and Blues night at West Witton See p.15
- 13 Mr & Mrs Fundraiser for the Gala at the Fountain Hotel. See p.13
- 13 Historic Buildings Day. See p.5
- 14 YDNPA Planning Committee. 1.00pm.
- 17 Carperby W.I. 7.30pm. Circle Dancing with Wendy Bannon
- 17 Ladies luncheon club. See p.5
- 18 Hawes W.I. "A life in music" with Diana Hartley. Methodist Rooms, 7.00pm.
- 19 Museum Friends AGM; and talk "Mary Queen of Scots at Bolton Castle" 7.30pm.
- 19 Quiz night for Hawes Cricket Club at the Fountain Hotel
- 20 Parish Gift Day in West Witton. Morning at the Fox and Hounds
- 20 Dinner at the Hall; Thoraby. See p. 3
- 23 Coffee Morning and stall; Hawes Methodist Rooms, 10.00am to noon
- 24 Family History Group. See p.4
- 26 Hawes School Harvest Festival at Hawes Methodist Church at 10.00am
- 26 Pie and Peas Supper for St Margaret's Church in the Creamery. See p. 8

- 27 Dizzy Blonde at the Fountain Hotel
for Hawes School PTFA
- 27 Falls Motel disco. 9.00pm 2.00am
- 27-2 Nov. Spooky Spectacular; Bolton
Castle
- 31 Wild Wednesday Autumn Watch;
Aysgarth Falls N.Pk Centre.
11.00am to 3.00pm.

You Could be One!

You can't walk around Wensleydale without falling over a Metcalfe! Well, there'll be more than you can shake a stick at in Hawes on **Saturday October 6th** - the annual Mecca Muster of the Metcalfe Society takes place at the Dales Countryside Museum (10.00am to 4.00pm). The AGM is in the morning, followed by a talk on the Archaeology of the Dales by Miles Johnson of the Yorkshire Dales National Park Authority. If you have any queries about your Metcalfe Ancestry, (however you spell it!) come along after 2.00pm and have your questions answered from our extensive databases, with expert help from Society members. Metcalfe memorabilia and souvenirs are also available. Find a gift for the Metcalfe in YOUR life!

Vivienne Metcalf


Wensleydale's
Got
T  **LENT** 
 Closing Date **for entries**
Friday 19th October 2012.
 If you would like to enter or want more
 information please call in at
**Whites of Wensleydale, or Hawes Post Of-
 fice.**
 for an entry form.

Prunings

A personal take on Plants, Propagating and other related rural ramblings.

How quickly Autumn is upon us. The *Aralia* is already red, the *Rudbeckias* are showing their brilliant yellows and the trees have begun to turn. A neighbour had a bonfire last week and it suddenly smelt like October! No wonder the Michaelmas Daisies are almost out.

It has been a very strange year: so many plants were late, and some suffered badly from excess rain. Looking on the bright side, I put a large woody *Aeonium* out on the patio with plenty of stones on the pot to hold it down, and it still looks amazing. It will have to move before there is too much frost, and it is now so tall I shall struggle to find anywhere for it in the greenhouse. Perhaps it will be a good candidate to cut down and start new plants.

I bought a small olive tree last Spring and it did very little last year. It spent the winter in the greenhouse where it flowered. I brought it out in April and it has at least 2 dozen fruits. Fancy that! Olives in the dales! Sadly I think it will have to go in again before any are ripe, but I live in hope.

One of the more worrying aspects of the poor summer we have just experienced has been the absence of butterflies in any number. The 2nd of September was the first day when I was able to count more than a dozen at once. The deep red Buddleia was at its best and they seemed to come from nowhere. In fact it was the first time I had seen a Red Admiral at all. Around 25,000 people took part in the Big Butterfly Count 2012 and among the figures collected was evidence that the said Red Admiral had declined this year by 72 per cent whereas last year its numbers were up. There is lots of information on the bigbutterflycount.org website



and also the Yorkshire Butterflies site, (link below) which makes interesting reading, but statistics for this year on the latter site are not yet available.

<http://www.yorkshirebutterflies.org.uk/species/butterflies/index.html>

Now is a particularly good time to plant shrubs as they have time to establish before the soil temperature drops too far. We all know that they need a big planting hole with plenty of humus or compost mixed into the bottom, but it seems that if the plant has been container grown there are a couple of other tricks worth trying. When the pot is removed, if the roots have started to circle which is common late in the season, make a few cuts downwards through the roots on the outside of the root-ball. This encourages the plant to grow lots of new roots as soon as it is in its new home. The second trick is to make sure that the hole is square, not round, the roots are much more likely to grow outwards if they don't have a pot shaped hole to follow.

I've already taken lots of cuttings this year, and some are already rooted. I think the rooting gel kits look interesting, and I might try some. I don't usually use rooting hormone, but there could be advantages to using gel, I gather it is clear enough to see the new roots as they form. As some cuttings simply stop growing if left too long, the end result might be better plants, sooner.

Good luck! And whatever you grow, take time to enjoy it.

Rose Rambler

Take a Line for a Walk

Come along and enjoy **The Big Draw**, the world's biggest celebration of drawing, a month long festival running throughout the UK.

Designed for children, families and adults .

The Big Draw takes place on **Saturday 13th October from 10.00am – 4.00pm** at The Station, Richmond and it's free.

Aysgarth Surgery Rota Wb - week beginning									
Wb	Oct 1st		8th		15th		22nd		29th
Day	a.m.	p.m.	a.m.	p.m.	a.m.	p.m.	a.m.	p.m.	a.m.
Mon	F	F	W	W	F	F	F	F	J
Tues	W	W	F	F	WJ	WJ	J	J	W
Wed	F	F	W	W	F	F	F	F	J
Thur	W	W	F	F	W	W	J	J	W
Fri	F	F	W	W	J	J	F	F	J
Doctors: F - France, J - Jones, W - West, C - Closed									
Morning Surgery: 9.00 - 10.30 a.m. (no appointments)									
Afternoon Surgery: 3.30 - 5.30 p.m. (appointment only)									
For appointments and all enquiries ring 663222									

Hawes Surgery Rota Wb - week beginning									
Wb	Oct 1st		8th		15th		22nd		29th
Day	a.m.	p.m.	a.m.	p.m.	a.m.	p.m.	a.m.	p.m.	a.m.
Mon	W	W	F	F	WJ	WJ	J	J	W
Tues	F	F	W	W	F	F	F	F	J
Wed	W	W	F	F	W	W	J	J	W
Thur	F	F	W	W	J	J	F	F	J
Fri	W	W	F	F	F	F	J	J	W
Doctors: F - France, J - Jones, W - West, C - Closed									
Morning S'y: 8.45-10.15 Tues till 10.45 (no appointments)									
Afternoon S'y: 4.40-6.00 Tues 1.30-4.00 (appointments only)									
For appointments and all enquiries ring 667200									

Surgery News

Flu Vaccination Programme

The traditional winter flu vaccination programme is under way & some of you will already have had your jabs. If you are over 65 (or will be by 31st March next year) or younger than this but in an 'at risk' group you should book your winter flu jab without delay. At risk groups include those patients taking medicines that lower their immune response & those with the following conditions:-

- Asthma
- Diabetes
- Chronic kidney, liver or lung disease (COPD)
- Chronic heart disease

Reminder letters will be sent to all those not inoculated by the end of November.

Medicine Change

Latest research indicates that higher doses (40mg and above) of the cholesterol lowering drug Simvastatin are not recommended when patients are also taking either of the blood pressure lowering drugs Amlodipine (brand name Istin) or Diltiazem (brand names Adizem or Tildiem). In these circumstances it appears that the side-effects of Simvastatin may be amplified. For this reason, Atorvastatin 20mg has been substituted. If you have any queries about this change, please discuss these with your doctor

Clive West

Bolton-cum-Redmire PCC's Harvest Weekend Supporting 'Send A Cow' Charity

Harvest Café Church Friday 5th October (4:00 – 5:30pm) Redmire Village Hall

Children's activities, tea and 'café style' act of worship based on 'Send A Cow'

All are welcome - Further Information: Jayne Foster (622331) and Anne Day (624171)

Harvest Communion Sunday 7th October, 11:00am, in St Oswald's Church, Castle Bolton

Harvest Supper Monday 8th October 6:30 for 7:00 pm. Redmire Village Hall. BYO wine.

Tickets: Adults £6 /School age £3 Available from: Anne Day, Jayne Foster and from Robert Hall

'Send a Cow' For over 20 years they have been helping thousands of African families and orphans grow enough food to eat, sell their produce and develop small businesses that last. Providing livestock, seeds, training and ongoing support, they help families leave poverty behind for good.

New Pilates Class

Wensley Village Hall
Tuesdays 6.00-7.00pm £4.00
650398 for details

Satnav Poem

I have a little Satnav,
 It sits there in my car
 A Satnav is a driver's friend,
 It tells you where you are.
 I have a little Satnav,
 I've had it all my life;
 It does more than the normal one
 My Satnav is my wife.
 It gives me full instructions
 On exactly how to drive
 "It's thirty miles an hour" it says
 "And you're doing thirty five"
 It tells me when to stop and start
 And when to use the brake
 And tells me that it's never ever
 Safe to overtake
 It tells me when a light is red
 And when it goes to green
 It seems to know instinctively
 Just when to intervene.
 It lists the vehicles just in front
 It lists those to the rear;
 And taking this into account
 It specifies my gear.
 I'm sure no other driver
 Has so helpful a device,
 For when we leave and lock the car
 It still gives its advice.
 It fills me up with counselling
 Each journey's pretty fraught;
 So why don't I exchange it
 And get a quieter sort?
 Ah well, you see, it cleans the house
 Makes sure I'm properly fed,
 It washes all my shirts and things
 And - keeps me warm in bed!

NSPCC Teas and Stalls.

**Redmire will host the NSPCC TEAS
 and STALLS in the Village Hall from
 3.00 -4-30pm on Thursday 4th OCTO-
 BER.**



10 October–21 November. The beauty and drama of waterfalls at night. Special landscape features of the Yorkshire Dales, captured in black and white photography of John Arnison

October

- 1, 6 A strenuous guided walk with a NP Ranger through local Red Squirrel Reserve at Snaizeholme. A chance to learn about red squirrels, habitat and their conservation in the Dales. A ten mile walk. £3
- 9 Drop in and taste in the DCM local food room 10.00am to 3.30pm. A taste of the wider world Curry and Spice—to celebrate Black History Month. Museum charges apply
 Upper Wensleydale Area Ranger Matt Neale for an afternoon talk on the work of the YDNPA and how it keeps the Park special.
- 19 7.30pm. Friends of the Museum AGM and lecture by Barry Thornton: 'Mary Queen of Scots at Bolton Castle'
- 23 Drop in and taste in the DCM local food room 10.00am to 3.30pm. Sloe Gin and Rosehip Jelly. Museum charges apply
- 28 History of knitting in the Dales; 1.00 to 4.00pm. General history but also particular reference to the Dales. Demonstration using a knitting stick. Museum charges apply
- 29 Autumn crafts for kids with Becci Coates 2.00 to 4.00pm. £3
- 31 Discover and Do; 2.00 to 4.00pm. Join Rhoda Fraser for storytelling and children's craft workshop. £3.

For further information on any activity 'phone 666210

**For Gayle Mill Events please see
 page 13**



FREE
Wednesday
3rd October
10am-3.30pm



Rural Affordable Housing Conference ...

Housing in the Dales

...for older people in rural parts of Richmondshire

Share experiences in delivering older people's accommodation in rural Richmondshire; hear about innovative solutions to keep local people in the Dales. Come and join us at:

Yorkshire Dales National Park Office and Sycamore Hall, Bainbridge.

For more information and to book a place email: amanda.madden@richmondshire.gov.uk



HOUSING ENABLERS
Local solutions for local people



housing21