

THE UPPER WENSLEYDALE NEWSLETTER

**ISSUE NO. 181
JUNE 2012**

**Donation please:
30p suggested or more if you wish**



Published by

The Upper Wensleydale Newsletter
Burnside Coach House,
Burtersett Road, Hawes DL8 3NT

Tel: 667785

e-mail: alan.watkinson@virgin.net

Printed by Wensleydale Press

Committee: Alan S.Watkinson,
Barry Cruickshanks (web), Sue E .Duffield,
Sue Harpley, , Alastair Macintosh,
Neil Piper, Janet W. Thomson (treasurer)

Final Processing: Sarah Champion, Adrian
Janke

Postal Distribution: Derek Stephens

**Upper Wensleydale
Newsletter**

Issue 181—June 2012

Features

Editorial **3**

Wensleydale Words **10**

Doctor's Rotas **25**

The Old Mill **14**

Police Report **16**

Ranger Report **21**

North Country Theatre **26**

What's On **22**

Plus all the regulars

PLEASE NOTE

This web-copy does not contain the
commercial adverts which are in the full News-
letter.

As a general rule we only accept adverts from
within the circulation area and no more than
one-third of each issue is taken up with them.

*Whilst we try to ensure that all information is
correct we cannot be held legally responsible for
omissions or inaccuracies in articles, adverts or
listings, or for any inconvenience caused. Views
expressed in articles are the sole responsibility of
the person by-lined. Articles by committee mem-
bers carry just their initials. We appreciate be-
ing asked before any part of the Newsletter is
reproduced*

**DEADLINE FOR THE
JUNE ISSUE,
THURSDAY JUNE 21st**

Advertising

Boxed adverts: £6, £12, £18

There is a big reduction for six issues or
more, so for six issues the totals are:

£25, £50 or £75

Greetings etc. £2.00

What's ons (non-commercial) are free

Contacts for adverts:

For Hawes area and westward:

**Barry Cruickshanks, Ashfield, Hardraw:
667458**

For elsewhere:

**Sue Duffield, Fellside,
Thornton Rust: 663504**

Editorial

Does interest in the Royal Diamond Jubilee diminish the further from London you go? Is it greater among the older population? What about our children? Are many people more turned on by other 'celebrities' featured weekly in magazines, or daily on the Web? Certainly there are ardent royalists spread widely across the land, just as there are those at the other end of the spectrum.

We suspect most of us are somewhere in between. Whatever we think of 'Monarchy' in the 21st century, what is undoubtedly true to say is this: ever since the accession of the young Queen and the role imposed upon her while in Africa 60 years ago, her dedication and commitment to duty have been exemplary. Even 40 years in the same job, at the same place, is a rarity for most of us these days!

There is no denying that constitutional issues have rumbled along for years: 'faith' issues, the relationship between the Monarch and the Church of England, and the role of Monarchy in governmental affairs. Let us put those aside for a while; it might be good for us all just for a moment to look a bit more widely and even be a bit sentimental! The Queen is head of a Commonwealth of Nations holding together so many people of differing races, cultures, languages and traditions, which can only be good for the health and mutual understanding that the world needs.

As for sentimentality, at this time of doom and gloom with the economy, a bit of rejoicing and 'making merry' will do none of us any harm! As long as our celebrations are not hijacked by those wishing to make jingoistic mischief, or those moaning about the cost (think of the Olympics!), and we concentrate on those 60 years of faithfulness, and yes, stamina, then we might all feel a bit better for it!

Response! Our May Editorial attracted a rarity – a written response! Our thanks to Peter Annisson who, in a long email, commented on 'an interesting editorial but a somewhat bizarre selection of "important issues"'. In summary Peter concluded: 'So my list would be: economy; number and quality of jobs; maintaining a balanced demography; housing; education (primary through to tertiary); health service provision; transport in the sense of providing access to services (including cultural, sporting and social)'.

Newsletter Production

In the sixteen years since the Newsletter was founded, a cheerful and enthusiastic group of volunteers has handled all aspects of writing, assembling, printing and producing the Newsletter each month. Sadly, troubles with printing, stapling and folding machines, man-handling heavy paper and the difficulties of squashed accommodation, (plus, regrettably increasing age!) have made achievement of the monthly deadlines more stressful and difficult. Thus, with regret, we have decided that we can no longer print the Newsletter ourselves. We are, however, delighted to announce that the Newsletter will be printed by the Wensleydale Press, a family owned and operated local business.

We thank our volunteers for their many years of loyal and dedicated service producing the Newsletter and look forward to a successful partnership with the Wensleydale Press.

West Witton Jubilee Celebrations

At 6.30pm on the 4th June, the Jubilee Wall Hanging will be unveiled in the West Witton Village hall. This will be followed by a bring-and-share meal. Coffee and tea will be available.

At 10.26pm the Penhill bonfire will be lit in celebration of the Queen's Diamond Jubilee. Fireworks will follow later.

Hawes School

Bags2school clothes collection

Hawes School PTFA are having a Bags2school clothes collection on **Thursday 21st June** to raise funds for the school. Bags2school collect the following for reuse: good quality second hand adult and children's clothing, sheets, blankets, curtains, soft toys, shoes belts and hand-bags. If you have anything you wish to donate, please place it in a bin liner and leave it inside the school gate by 8-30am on the day. Thank you for supporting the school.

Ruth Lindsey

Jubilee Concert

Friday June 8th 7.30pm

Hawes Market House with Hawes Silver Prize Brass Band and Young Voices with audience participation.

A free concert; why not make this special by dressing up in your 'best outfits'.

Bainbridge and District Motor Club

Another successful rally was held on Wednesday 16th May. This one was the 12 village rally and was started from Aysgarth National Park Centre car park and we were to answer a few questions to begin with which included 'what's your car registration' and 'if travelling at 50MPH what's the braking distance?'. We were handed our papers and had to work out the 17 anagrams, 12 of which would be the villages that we visit, these worked out to be Grinton, Satron, Marske, Thwaite, Marrick, Downholme, Keld, Hardraw, Thoraby, Appersett, Cotterdale, Bellerby, Harmby, Stalling Busk, Spennithorne, Agglethorpe and Melmerby. From this list we were to work out the 12 to visit in the shortest route. With cars setting off in different directions we were on our way, our first stop was Harmby but another car's first stop was Thwaite! (obviously different routes were planned between those two cars!) We were to answer two questions in the relevant villages, some proving harder (and sneakier!) than others.

On the route round we were to find five things beginning with the letter 'H' in the hedgerow/roadside, some interesting things came back; a hairbrush, handwash (don't think these were really found on the road side but never mind!) hardcore, hawthorn, hay and some horse poo! Thank you to Muriel Lambert and Netta Davison for taking the time to organise the rally. The next one will be held on **Wednesday 20th June** by Bob & Rachel Foster, **622331**.

Emma Thwaite

Richard Fawcett

...would like to thank all those who attended and gave so generously at his Illustrated talk on Travel and Teaching in South East Asia, on May 8th at The Pantry, Hawes. £330 was raised. Last year's donations went to help the Flood victims of Bangkok and an orphanage in Bali. This year's will go to equally worthy causes. Thank you.

John Leland Again

In the first half of the 1500s this quiet scholar spent six years riding through England collecting a vast amount of material. Fragments only came to be published in 1710-12 and even then were described as 'unreadable'. Here's another extract from our area:

"Syr James Metcalf hath a very goodly howse caullid Nappa in Wensedale. Wensedale and the soile about is very hilly, and berith litle corne, but norishith many bestes. Wenseldale, as sum say, taketh name of Wensela market. For Wensela standith on the hither side of Ure, and straite on the farther side beginnith Wensedale.

(Vennones men of Wensedale)

Nappa is abowt a vii miles west from Wensela Market, but communely it is cauled No Castel.

Bisshops Dale lying by Ure in riper citer, and containing a sorte of greate felles with dere liyth south west within a quarter of a mile of Nappa. So that this dale lieth upward weste betwixt the upper partes of Uredale and Sualedale.

Bisshops Dales longith to the king, and yn the hills about hit be redde deer. In faire winters the deere kepe there, in sharp winters they forsake the extreme colde and barenes of them

Olympic Challenge Fundraiser

You will know by now that the Olympic Torch comes through Aysgarth on Wednesday 20th June. To raise awareness of this and to celebrate the Olympics taking place in this country, (perhaps a once in a lifetime experience), Yore-bridge Sport and Fitness, Askrigg are planning a Day of Challenges on **Sunday June 17th** between 11.00am and 3.00pm.

There will be food available for a lunchtime picnic along with music, demonstrations and softplay indoors for the younger children. We will be challenging people to take part in a "Dales strongest man" competition, a gym triathlon, cricket and football challenges set by your local clubs and Sure-start will be catering for the younger age group. Put the date in your diary and join us for a fun day out!

Contact **Jan Hale 650060** for further details.

Plant Pots Raise the Pennies

The volunteer team at Gayle Mill celebrated the arrival of spring in style. During a family fun morning local children took part in heritage craft activities to make wooden plant pots and card their own wool. They also enjoyed making lamb pom-pom key rings and learning about specially made traditional wooden gates.

Supervising the woodworking activity was volunteer Martin Olney. After instructing the children on how to use a hammer and nail the event organisers are pleased to report he still has all of his fingers and thumbs!

During the day the team raised £105.40. Gayle Mill Trust would like to thank local families for attending and taking part in the event. The next family event at the Mill takes place on **Saturday 2nd June**. Visit www.gaylemill.org.uk or call **667320** for more information.

COMING UP:

Family Fun Morning - A Royal Celebration

10:00am – noon; Saturday 2nd June

£2 entry – drop in

* Make crochet bunting

* Decorate a paper crown

* Juice and biscuits/tea and coffee



Fran Coates teaching children to card their own wool:

Decorative and Fine Arts Society Henry Moore and Barbara Hepworth

Henry Moore and Barbara Hepworth are two of the most important British sculptors of the twentieth century. Both were inspired by the art of the past and of other cultures, as well as by the landscape of Britain. At the same time they were at the forefront of modernism – creating a new language of sculpture, full of abstract shapes, holes and magisterial forms.

In a Wensleydale Decorative and Fine Arts Society lecture Jo Walton discusses their lives and works, and explores the vibrant artistic world in which they moved. She will look at Moore's Shelter Sketchbooks from WW2, and at his tapestry designs; and will see how Hepworth's marriage to the painter Ben Nicholson changed both her sculpture and his painting. The legacy of these two great sculptors is a body of work which may be abstract, but is filled with a deep humanity and is rooted in the landscape they loved.

After university, Jo Walton began teaching and lecturing, combining this with a career in art book selling. She now combines freelance lecturing with work in publishing and is a guide at Tate Modern and Tate Britain.

The lecture is on **Tuesday 12th June at 2.00pm** in Middleham Key Centre and will be preceded by the AGM at 12noon. Non-members are welcome to the lecture at a cost of £5, pre-booking is essential, membership and further information is available from the Membership Secretary, tel. **01748 886545**

**PLEASE NOTE THAT THIS IS THE
LAST LECTURE OF THE SEASON,
WE START AGAIN IN OCTOBER.**

Elaine Frances

Good News for Travellers

We have just heard that from **May 14th** the early train from Carlisle to Leeds will stop at Garsdale at **6.59am**. More details next month

Prunings

A personal take on Plants, Propagating and other related rural ramblings.

I was clearing up an untidy corner when I picked up what looked like one of several pots of *Bergenia*. Surprise, surprise, the whole clump was growing from one pot. Needless to say some of the longer rhizomes were already trying to root so I now have quite a few new plants. They have several nicknames; *Elephants Ears* for their shape, *Pig Squeak* because they make squeaky noises when the leaves are rubbed. They are tough, easy to grow and as they are evergreen, make good ground cover but don't thrive if too dry. I am impressed by how many different plants are available. Basically they all start out looking fairly similar and most seem to be varieties of *Bergenia Cordifolia* although some nurseries sell them without cordifolia in the name. The height can vary from 25 to 45cm and the spread from 30 to 60cm with a range of colour from white to deep carmine. One of my favourites is *Abendglut* which is rosy red with maroon leaf colour in winter and it remains quite small. *Morgenrote* is another beauty which carries the RHS AGM and holds its deep red blooms on tall stems. *Bressingham White* is another shortish variety and there is also a *Bressingham pink*. They benefit from some protection in the winter as the leaves can become wind scorched if they are very exposed but they are lovers and their glossy leaves help stop the ground beneath drying out too quickly.

Talking of which, it seems no time at all since a raft of hosepipe bans was announced, and we were informed that half the country is officially in drought. No sooner said than the heavens opened and three weeks of continuous down-pour followed. It seems to me that when there is a drought it should be warm and sunny. Conversely, when it is bitterly cold I am unlikely to be concerned that there has been less than average rainfall. I understand the problem with the groundwater, and I suspect that the residents of Tewkesbury, watching the water lapping around their beautiful abbey, understand it too, albeit for different reasons. (Were the medieval builders blessed with supernatural forethought in their choice of site?)

What is evident is that we may have to garden with less water. Even here in the dales we can watch rivers and streams rise and fall much more rapidly than they did thirty years ago and we can thank the land improvement schemes which involved drainage of moorland areas for

this change of circumstance. Run-off has always been a problem in urban areas where there is more impermeable surfacing, and flooding happens when water has nowhere to go. Limestone areas drain quickly and soon dry out but boggy



patches stay wet all year. The principle needs to be that proposed by Beth Chatto – “Right plant, right place”. Her gravel garden near Colchester was planted during the winter of 1991-1992, and has never been watered since. (More information at www.bethchatto.co.uk) It is a testament to working with nature rather fighting a losing battle.

Good luck! And whatever you grow, take time to enjoy it.
Rose Rambler.

For Those Who Love Everything WOOLLY

**Bus Trip To WOOLFEST 2012
Friday 22nd of June in Cockermouth.**

Limited seats available for this super day out.

**For more details contact;
Jenny at Past and Present.
Market Place, Hawes.
07515760772**



What's On in the Museum

May-July

An exhibition of paintings by Judith Bromley exploring moorland life through the seasons.

June

- 3 Colours to dye for! Creating colour from natural and acid dyes, demo of mixing and blending colours and texture. 11.00am to 3.00pm.
- 5 Drystone walling demo. 2.00 to 4.00pm.
- 10 Pathfinder Intermediate. A full day navigation course including maps, grid references and compass work. Booking essential. £10
- 12 Flower flavours: Drop in and taste all things made with elderflowers. 10.00am to 3.30pm.
- 15 Wash Day Blues—What went on in the Victorian kitchen on wash day?
- 16 Poems, dialect stories and food tasting at a Friends of the Museum fundraising evening. Donations welcome. 7.30 to 9.00pm.
- 16 A Moorland Experience; 2.00 to 4.00pm. A contemplative visit to the moor with artist Judith Bromley. There's a three mile drive to the start. £3
- 17 Etched in Time. Metalsmith artist Rebecca Gouldson will lead a workshop. Booking essential, £20. From 9th June she is creating and installing work in the museum galleries as part of North Yorkshire Open Studios. 10.30am to 3.30pm.
- 17 Who's the Daddy?! Free Museum entry for Dads on Father's Day 10.00am to 4.00pm.
- 24 Put a sock in it! Learn how to make socks on 4 needles. Problem solving and getting started. 1.00 to 4.00pm.
- 29 Wildflowers in the Dales—An illustrated talk celebrating diverse wildflower habitats of the Dales. 7.00 to 8.00pm.

For further information on any activity 'phone **666210**

For General What's ons see page 22

Cream Teas

With a "What Have We Here Stall"

Sunday 17th June 2.00 till 4.00pm

Cathedral Hall, West Witton (Next door to Fox & Hounds)

£3 Admission including tea and cream scones

All very welcome

Donations of cakes, jams or items for the 'what have we here stall' (unwanted presents, ornaments, books, toys etc. gratefully received)

Personal Advice for Richmondshire 16-25 Year Olds

The **YMCA** is setting up a new service with a Personal Advice Worker to help with employment and training opportunities but also welfare benefits, housing, education. It will be based in the Richmond YMCA office but it is intended to access other locations across the district.

It is hoped that through provision of such a service it will be possible to reduce the barriers that young people in Richmondshire face, whether this be transport issues, access to training or to support services.

Here are the contact details:

Laura Tallentine

Personal Advice Worker

Richmond YMCA, 07580 509351

laura@richmondymca.co.uk

Flowers of the Dales Festival

Yorkshire Dales Millennium Trust
Walks, cookery, crafts and children's events throughout the summer. Please ring 01524 251002 for full details.

Hawes Cricket Club

Fixtures for June Sundays:

10th v Dales Away

17th v Kirklington Home

Games start at **2.00pm**

Grants for Good Ideas

Do you have a good idea to help local communities? If so, the Yorkshire Dales Millennium Trust could provide funding. Last year its Sustainable Development Fund gave out over £150,000 to all sorts of projects (a weather station at Kirkby Malham School and improved energy efficiency in village halls, for example). Your idea has to bring environmental benefits but might also provide jobs, give training or improve local facilities.

Don't delay—the deadline is **June 8th**. Businesses, community groups or individuals can apply. Go to the website www.yorkshiredales.org.uk/applyingtothedsf for more details or talk to Gillian Muir on **01524 251002**.

Springing into Singing

On the evening of Wednesday 25th April the Methodist Hall in Leyburn was packed when the East Witton Male Voice Choir gave their annual Spring Concert. The audience were treated to a wide and varied selection of music and words, including full choir pieces, solos, instrumental pieces and humorous poems and stories. The concert raised £740.00 for the Yorkshire Air Ambulance.

This has been the first season for the choir with new conductor, Diana Hartley, and new pianist Ruth Biker. The choir has undertaken many engagements including concerts at Christmas in Carlton, Middleham and Askrigg, a Songs of Praise in Leyburn Church, entertaining for Yorkshire Cancer Care in Masham and the Festival of Choirs at East Witton Church.

New members of the choir will be made very welcome. The new season will begin on September 5th 2012 meeting in the Methodist Hall, Leyburn. Contact **650245** for details.

Exhibition

at the National Park Authority offices Bainbridge

to **29th June**

open 8.30 am to 4.30 pm Mon.- Fri.

Gathered Fragments, Stolen Moments

A celebration of simple gifts

Photographs by Roy Shoesmith

Middle Earth Visits Askrigg

During the merry month of May in 2011, my husband and I travelled east from our house, for our usual Saturday night jollification at a local hostelry.

It was no surprise to see nine very tall gentleman in fancy dress, (as we thought). Any local resident will confirm that the art of disguise is quite common in this part of the dale, hen nights, stag nights, birthday parties, all require fancy dress. However, on this occasion we were so wrong! This was no disguise, these were genuine Hobbits, well at least eight were, the ninth kept insisting he was an elf. They assured everyone who asked that they had undertaken the perilous journey from Middle Earth in order to attend their reunion, in Askrigg, which occurs every nine years. When questioned about their height - they were all over six feet tall - they replied in scornful tones,

"Do not believe everything you see in films."

At the end of a very jolly evening and lots of Askrigg ale, they waddled out on their Hobbit feet, once outside an argument ensued, the elf wanted to go clubbing but the last bus had gone. The leader, then informed us that everyone has their own Hobbit name and should be proud to use it. They waved us goodbye, promising to return in nine years time. Personally, I cannot wait for 2020!

Tigerlily Danderfluff of Willowbottom

If you want to know your Hobbit name go to Name Generator.

Carperby Calling

Given the rotten weather we've been having recently one could be forgiven for not wanting to think about the garden, but in Carperby the residents are beginning to anticipate their annual fund raising day. **Sunday 1st July from 11.00am till 5.00pm** around 20 gardens will be open to view along with the usual scrumptious home-made refreshments in the Village Hall. The usual off-road parking will be available also Plant sales and Ice cream. Admission £3.50. Looking forward to seeing you

Further information on **663740**

Pat Jackson

**Middleham and Dales Local History
Group**

**Tuesday 19th June 2.00pm –
Middleham Key Centre**

***Life on a Dales farm in the 17th and 18th
centuries* Louisa Gidney, “Rent-a-
peasant”**

In this talk Louisa Gidney will look at how some of the broader social changes of the 17th and 18th centuries impacted at a local level on life on Dales farms. Dressed appropriately in the 17th century costume of a farmer's wife, she will focus particularly on the status of women. She will also use artefacts to demonstrate everyday tasks and will show how some of these changed over the time period under discussion.

Louisa is an archaeologist specialising in the study of animal bones, particularly for the Archaeological Services of Durham University. She has a smallholding in Weardale where she rears rare breed cattle and sheep and she also runs the Living History provider “Rent-a-peasant” which specialises in the portrayal of everyday rural life in the past.

Annual membership of the group is £10 and visitors are welcome to attend individual meetings for a fee of £3. For further information, please contact **Tony Keates 640436** or email dotand-tonyk@btinternet.com

Seen From The Pulpit

The following story may be of interest to your readers. It is a true incident described by my grandfather, and occurred at the little Methodist chapel in Bilsdale (the valley running through from Helmsley to Stokesley).

For no apparent reason the local preacher suddenly burst into laughter in the middle of his sermon. It was some time before he could control himself, and then, apologising for his unseemly behaviour, he explained “There's owd Jim ‘Arker just gone past, wi’ ‘is best Sunday class on, and a bucket o’ pigswill of his head, an’ t’ bot-tom’s comed oot.”

(Courtesy of the old ‘Yorkshire Dalesman 1941)

It's a Pleasure!

The Askrigg Ladies Sing for Pleasure group have had a busy season, singing at venues around the Dales. These include evenings at Carlton, Aysgarth, Bainbridge and Gayle Chapels, and entertaining at Sycamore Hall in Bainbridge. The two highlights of the season were a joint concert in Askrigg Church with the East Witton Male Voice Choir which raised £870 for the British Heart Foundation, and entertaining at a Sausage and Mash Supper in Askrigg Village Hall which raised over £2000.00 for the Village Hall.

The ladies meet on the second and fourth Monday of the month at 7.30pm in the back room of Askrigg Village Hall to sing a wide variety of music in a relaxed atmosphere. There are no auditions, and an ability to read music is not necessary. Singing at venues is by personal choice and many ladies just come along to enjoy an hour of music, friendship, and fun. All ladies are welcome and the new season will begin on the second Monday in September. For more details contact:

**Diana Hartley
650245**

Open Studios

**Saturdays and Sundays
June 9/10th and 16/17th
from 10.30am to 5.30pm**

This now annual event occurs throughout North Yorkshire with many artists' studios having open days.

We can only list the ones in our area:

Andrea Hunter, Focus on Felt; Hardraw

Angela Keeble, Baincote, Bainbridge

Helen Shovlah, Brunskills Cott. Cotterdale

Carol Tyler, Mill Fosse, Hawes

Rachel Antill, Croft House, Gunnerside.

In addition, there are special exhibitions at the Dales Countryside Museum. *See the list of their what's on page*

**Church Coffee Club
Bolton-cum-Redmire PCC's
Wednesday 6th June
10:30am to 12 noon
Reedmere Barn, Redmire (625717)**

Wensleydale Words for June

It is with a heavy heart, to quote Dr Watson, that I take up my pen to write these, the last words in which I shall ever record the singular gifts by which our wonderful students are distinguished.

The common thread running through all the articles I've written for this Newsletter over the last two years has been this: I am very proud of our students. Indeed, I have never worked in a school quite so blessed. Our students are – without exception - friendly, polite, mature, caring, funny and hard-working young people; they have always made me feel very welcome and valued. When I leave Wensleydale this summer I will miss them.

So why, you might ask, am I going? I was appointed Deputy Headteacher in 2010 when the school was 'satisfactory'. I was asked by governors to help the school move from 'satisfactory' to 'good'. Part of my job – as well as the day-to-day running of the school – was to improve the way the school used systems and structures in order to monitor and review its performance at all levels. I was also asked to develop our curriculum in order to ensure it meets the needs of our students both now and in the future. And I was asked to track student progress and put in place programmes of support for those students in danger of missing their targets. I am very proud that the systems and structures I helped put in place proved so important during our recent Ofsted inspection, that inspectors praised the curriculum, and that our exam results have continued to rise to record highs.

It is because of these successes and because the school is now 'good with outstanding features' that I feel the time is right to move on to my next challenge. The school is now in a very good position and is poised to become 'outstanding' by 2014. The right structures are now in place to ensure the improvements we have made are sustained in the future.

You may know that I am not the only member of staff moving on this summer. It is a testament to the school's success that the Headteacher, Deputy Headteacher and Head of Maths are all taking up new roles at the end of this academic year: the school has benefitted

from their expertise and hard-work but these colleagues have also benefited from the school's successes. It is a compliment to the school and its community that its leaders can now go on to achieve other things. Besides, I truly believe a school should renew its leadership team every few years; that it is important for other people with a fresh approach to join the school and lead it in a new direction. I think this is precisely the right time for 'new blood' to take the school forward and I wish them – and our staff and students – all the very best of luck in the future. It has been a pleasure serving this school and living and working in this fantastic community.

Let me end my final dispatch by sharing with you some of the findings of our recent Ofsted inspection – we are delighted by the report not because it rubber-stamps what we already knew about our school (although this is true), but because it rewards all the hard work put in by all our students, staff and governors: it is the result of a real team effort.

The report said that The Wensleydale School & Sixth Form was a "good and continuously improving school" and "some of the aspects of the school's work were outstanding". It pointed out that "GCSE results show that students' attainment is significantly above average"

Matt Bromley

How About This!

7H15 M3554G3
53RV35 7O PR0V3
H0W 0UR M1ND5 C4N
D0 4M4Z1NG 7H1NG5!
1MPR3551V3 7H1NG5!
1N 7H3 B3G1NN1NG
17 WA5 H4RD BU7
N0W, 0N 7H15 LIN3
Y0UR M1ND 1S
R34D1NG 17
4U70M471C4LLY
W17H 0U7 3V3N
7H1NK1NG 4B0U7 17,
B3 PROUD! ONLY
C3R741N P30PL3 C4N
R3AD 7H15

Let Them Know

If you are looking for a quick way to check on how the YDNPA planning committee has been reaching its decisions visit <http://www.pipspatch.com/assoc-rural-communities>

The Association of Rural Communities launched this service in August 2010. These days fewer applications are discussed by the planning committee as, to save money, more decisions are made by the planning officers using their delegated powers. So residents and parish councils need to be more vigilant and carefully evaluate any planning application which may affect them.

I would emphasise that it is just as important to let the officers know if you agree with an application and tell them if there are any specific aspects you especially like. Often they only hear from those who object.

If you are not happy about a proposed decision by a planning officer you can contact your parish council as well as the district or county councillor who represents your area on the planning committee. The application will then be discussed by the planning committee. The YDNPA has a reference back system which means that if the planning committee votes against a recommendation by a planning officer that decision must be ratified at the next meeting.

Pip

Land

New Pilates

A new beginners Pilates session will be starting on **Thursday 7th June at 5.00pm** - Yore-bridge Sport and Fitness, Askrigg. All enquiries to me on the numbers below or email info@shapeupyourhealth.co.uk.

Lesley Williams

FOR SALE
Brand new metal long-reach
stapler 'Office depot'
with 5000 staples.
Will staple up to 20 sheets
£12.00
Phone 667785

Exhibition

at the National Park Authority offices
Yoredale, Bainbridge

3rd May to 29th June .
8.30am to 4.30pm Monday to Friday

Gathered Fragments, Stolen Moments

A celebration of simple gifts

Photographs by Roy Shoesmith

For more information about Roy and the exhibition please telephone **Lesley Knevitt** at the National Park Authority, on **652326**



Bainbridge Village Green

Sunday 3rd June 2012

Celebrate the Queen's Diamond Jubilee

Programme of Events

- 10.30 am** Ecumenical Service on the Village Green led by Revd Janet Park, Methodist Minister, Followed by Coffee and Scones
 - 3.00 pm** Celebrations on Bainbridge Village Green
 - 3.15 pm** Presentation of Commemorative Jubilee Mugs to children of the Parish and Bainbridge Primary School, aged under 11
 - 3.45 pm** Champagne Toast to the Queen
National Anthem
Cutting of the Jubilee Cake
 - 4.00 pm** Bring and Share Tea Party
 - 4.00 pm – 7.00 pm** 'Matthew J', Children's Entertainer
 - 4.00 pm – 5.00 pm** Children's Penalty Shoot-Out
 - 6.30 pm – 9.30 pm** Music and Live Band
Licensed Bar
 - 7.00 pm** Bacon Rolls Available
- You are encouraged to wear 1950s or red, white and blue clothing.**

Best Foot Forward

Life on the edge.

Try this for a varied few hours (or if you'd rather, just picture it on your map from the comfort of the settee!) I began at Aisgill Moor Cottages, right on the boundary of the county and National Park. The route crosses the Settle-Carlisle line; have a look at Hell Gill Force at the start of the river Eden, and then the foot-path leads up to the famous Hell Gill Bridge on Lady Anne's Way. Because the gill is walled off from sheep nibbling there is a wonderful display of wild flowers and just up the beck a fenced-off area boasts, in July, the best bilberries I know in the area! I'm a hunter-gatherer; well, a gatherer.

The route follows the beck wall until it turns sharp east, and then, leaving the wall climbs not very steeply up to White Brow and Hang-



ingstone Scar for a long walk right along **Mallerstang Edge**. It is easy walking until you feel like coming down. To enjoy most of the Edge, don't drop down until opposite Pendragon Castle. I found this the tricky bit. From Lindrigg Scar scramble down the best way you can find to meet the bridleway coming from Red Scar round to the road at Pendragon.

This little castle, 'repaired' a few years ago by 'Laing' just to make it safe, is worth pottering round before heading due south either by field paths near the river, via Shoregill to the Thrang (what a splendid Old Norse word!), or on the road via Outhgill village. This is one of those places we tend to drive through on the way to Kirkby Stephen. Why not pause, looking at the interesting buildings, not least Faraday Cottage. Outhgill boasts connections with the famous Michael Faraday of electromagnetism fame. (The family moved from Outhgill to London just before Michael was born in 1791) For the return to Hell Gill I simply followed Lady Anne's Way, now part of the Pennine

Bridleway and a much improved walking surface because of it. It crosses several becks which soon flood. Although not over-keen usually on man-made art-works in these places I quite like the large curved stone structure towards to top of the Way, meant to represent with an open section in the middle the bends in the river Eden.

I commend this walk to you; I think it is about 10 or 11 miles, but pick a day when you will have the long views west across to Wild Boar Fell and northwest to the North Pennines— Cross Fell and the white golf ball on the top of Great Dun Fell.

A.S.W.

Diet... What Diet?

It's not often we English blow our own trumpet and so I thought I would tell you about some real success stories right here on your door step.

The **Shape Up** weight management group has been going for some time now but since January this year members have lost a total of 4½ stone between them. We are not a big group and so this is a fantastic achievement. When you do the sums, it means they have between them cut down by 230 thousand calories!

They achieved this weight loss slowly but surely without starving themselves and denying themselves a social life. Members who attended consistently and took on board the advice discussed at each session found that they didn't need to resort to faddy diets and weighing and counting everything they ate. Very simply, they learnt how to recognize portion sizes, control cravings, become more motivated, read food labels, how to exercise in order to lose weight, how to burn more calories and just how important it is to have small achievable goals. All of this added together has given them the success they deserve.

Don't want to diet but just want to lose some weight? Then come along to Shape Up and join us every Monday at Hawes Market Hall or Wednesdays at Reeth Pavilion at 6pm and take the first step to making a change.

Contact **Lesley** on **07989 365363 / 650398** or email info@shapeupyourhealth.co.uk.
www.shapeupyourhealth.co.uk

West Burton School News

West Burton School has had *another* successful half-term; with Y6s S.A.T's coming up, trips out to local educational hotspots and visitors coming in and out; the half-term has been full of activity and excitement.

In early April two men who go by the names of Mark and Dean, also know as Mean or Dark (a mash up of their names, not their personalities) came into West Burton School to teach some very lucky Y5s and Y6s about cycling safety. All the children could ride a bike, but could they ride it safely on the road? Their skills were put to the test as Mark and Dean pushed them to the limit, with the 'life saver' look and safe signalling. Fortunately *all* the children passed with high marks from 6 right up to 10! In the next two years Mark and Dean will come again, to teach the current Y3 and Y4, the future Y5 and Y6s how to ride safely, but will all of them pass?

On the second day of May, Class 2 went to Gayle Mill to see Samantha Belcher again. However this time, the children went to visit *her*. They took a bus there and back; when they arrived the children couldn't help peering over the edge of the millrace! Samantha had a helper with her, Ian. He was a volunteer guide, and a very good-natured man, who must have had a heart of gold to want to look after 23 school children without a pay packet to take home. First Samantha took them on a tour of the Mill - the tour came to an end in the turbine room, where the water transformed into energy, which was to be used for sawing up the logs.

The main task was for the children to make a plastic water turbine, Samantha said that it was mainly an activity for secondary school pupils; however, Samantha said that the children were so sensible that she thought that they could make them as well. The water turbines were tested, and all succeeded the challenge of working! Plastic or not they were still impressive and are now on display on the shelf in the Class 2 classroom.

A few weeks ago, there was joy across Class 1, as they could enjoy their Friday walks once again. The reason it was postponed was because the weather was too bad, and there were too many injuries and broken limbs to go out

walking! Luckily, now all the injuries have healed up, and so has the weather, Class 1 can get a long breath of fresh air again!

The children hope the next half term will be just as exciting and full of activity as this one has, and as the school says '*Work Hard, Play Hard*'.

Enjoy the West Burton Diamond Jubilee Events,

Katie Taplin and Ruth Dent.

40 Miles of Coins = New Railway

Over the weekend of the **30th June/1st July** the Wensleydale Railway is holding a coin challenge at its Leeming Bar Station to coincide with the Railway's 9th anniversary of re-opening. The aim is to eventually collect enough coins to stretch for 40 miles – the original length of the line – and use the funds raised to improve the track on the stretch of line from Leeming Bar to the junction with the East Coast main line at Northallerton so that it can be used by passenger trains. project. We need people to start collecting coins now, so that we can lay as many as possible on the platform at the station on our special weekend. 1p and 2p coins are very welcome, although we are happy to take larger denominations! Coins can be donated at any time before the event.

There will be a special anniversary fare for everyone who brings us some coins for the challenge.

Wensleydale Railway, Leeming Bar Station **08454 50 5474**

Further information:

generalmanager@wensleydalerrailway.com

Thanks

Ken Monkman

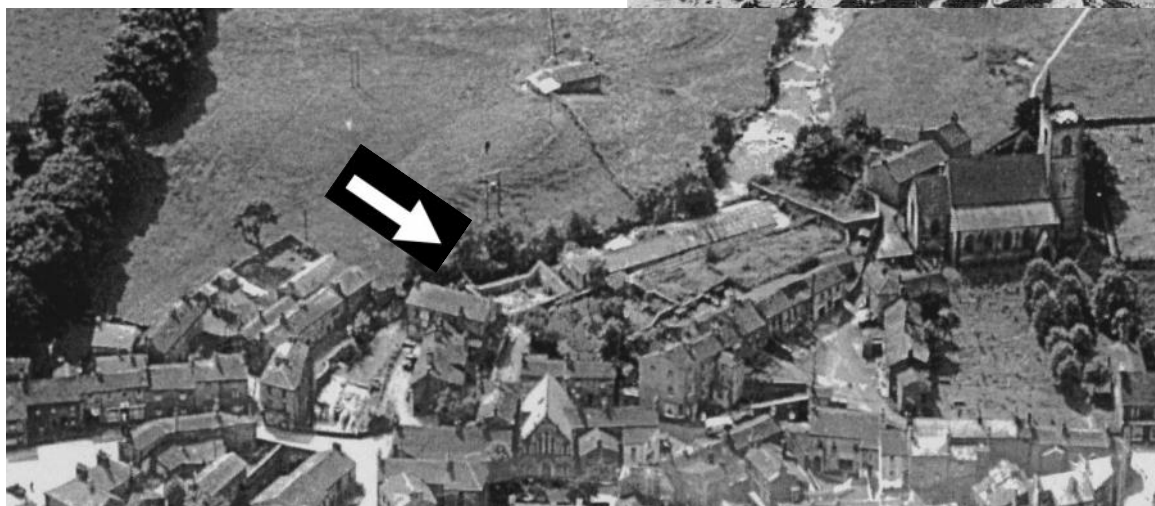
Wensleydale Railway Association Chairman

Lost and Forgotten?

It is mostly the visitors who stand and enjoy the view of the beck and the waterfall in the centre of Hawes but over the years there have been big changes in the scene which, it seems, nearly everyone has more or less forgotten.

A few years ago I saw an extract from an old film with one chap beside the beck and part of a large building that I couldn't place. It has been really hard to find full details of what came to be known as the 'Electric Mill'; there are almost no photographs and even less information about it. Anyway, it's time to write down the findings; they may jog some more memories.

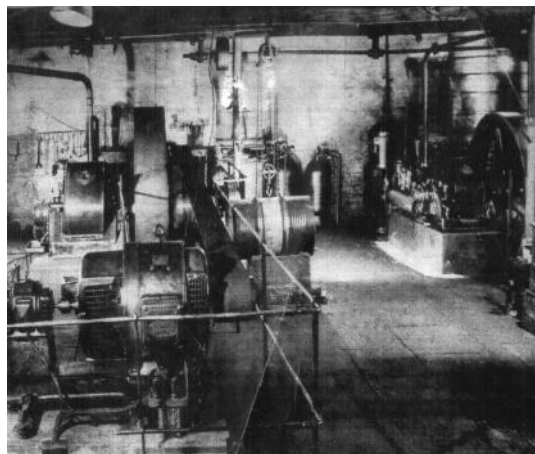
The picture below shows it as it is being demolished (late 1940s) by Dinsdale Brothers, some of



the stone being used for their workshop (now a single-storey house) at the top of Gayle Lane.

The mill was large "about 30 foot wide and six bays each eight foot long". The top picture (many copies of this exist) shows the leat bringing water **across** the beck, and the overflow from the mill-wheel. I have been unable to find out from anyone the location of the wheel which, together with the leat, became redundant in 1922 when the Hawes Electric Lighting Company took over the mill.

There were two diesel engines (see opposite), one much bigger than the other. What several older people seem to have been impressed by was 'Brassie George' who slept in the mill. At a more personal level, remembering their younger days, I was told of the alleyway towards the beck between the end of the mill and the adjacent building (now two flats) which, being near to the boiler house and warm, was a great place (as they used to say back then) for a bit of courting!



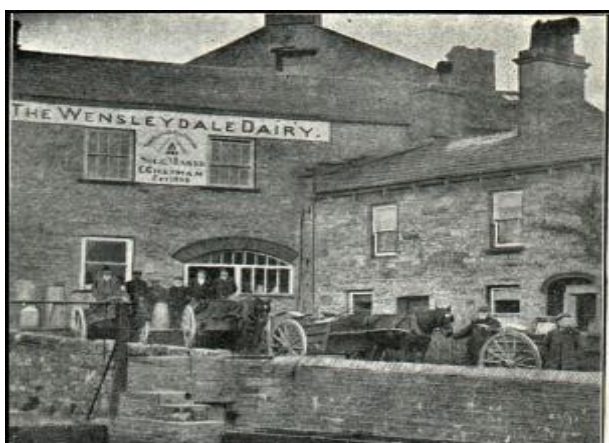


But what of the mill's earlier life? The date of its construction I've not found, but on the O.S. map of 1856, six inches to the mile, it is described as a **worsted mill**, and before that, about 1840, it was taken by James Smith and Sons who were already making hosiery, sweaters and rugs in the town. They were now able to spin their own yarn. It was described as a typical West Riding Mill of three storeys and rows of windows. By 1890 up to 20 people worked in the mill on knitting machines and there were 400 home knitters. The top of the main building is just visible below with the name of the company on the building which became the creamery in 1903. Note also in this picture the metal weir across the beck and the long channel running down to the lower mill beyond the bridge.

Upstream from the mill a large area (where bungalows now stand) was used for wool-drying and later as a piggery (linked to the creamery) and some hen houses and garden allotments.

It intrigued me that such a large building with a long and varied history has left very little for us to see today. These days we sometimes seem to photograph too much; it's how much we keep that matters!

A.S.W.



Police Report

A number of people have received phone calls in our area recently from a caller purporting to be from "The Lottery". The caller has advised the householder that they have been selected by The Lottery and have won sums of £3000 or more. The caller on one occasion has claimed that they are calling from "Prizemaster" and in order to claim the prize the householder needs to send a so-called "lawyers fee" to the company to sort out all the necessary legalities so that the householder can receive the cheque. This "helpful lawyer" and his address has been given to be Richard Newman of 100 High Road London. Prizemaster's address has been given as 130 Colchester Road London. Both of these are false. None of the households rung up in our area were taken in by the scam - but occasionally people are. Please do not agree to pay any money if you receive such a call. Any real lottery will not ask you to pay money up front - you already have when you bought your ticket!

The cost of fuel is still very high, as if we had not noticed! This leads to it being a valuable commodity for thieves. One Ford Transit in the Hawes area has had its diesel fuel tank drilled and the fuel removed. This sort of crime is more prevalent in more isolated locations as the criminals stand less chance of being discovered. Household heating fuel tanks and Farm diesel tanks are still being targeted also. A farm in the West Burton area recently had its red diesel stolen. Keep a regular eye on your fuel levels.

Regular patrols are being done of beauty spots and car parks to try and combat the age old problem of thefts from motor vehicles. It takes a matter of seconds to break a window reach into a car and steal property. It is no good really storing items in the boot as most car boots are now accessible from the passenger compartment.

DON'T BECOME A VICTIM OF THIS TYPE OF CRIME - TAKE YOUR VALUABLES WITH YOU IF YOU ARE GOING OUT FOR A WALK.

We are getting an increasing number of reports from members of the public being bitten by "farm" dogs (particularly border collies) when on public rights of way. This type of incident is now recorded as violent crime. **Obviously each case is treated on its own merits**, however I was watching the news on

the television and it appears that the government are wanting the courts to clamp down on this type of incident. The legislation may be aimed more at the irresponsible owner of "bull terrier" and other such trophy dogs, but if someone gets badly bitten by any dog then the same penalty could be applied. The news was reporting that judges will be encouraged to use their powers up to the maximum of 18 months imprisonment.

If you have a dog that has a penchant for "nipping" then please make sure it is kept away from the public.

Thanks as always

Andy Foster PC826
Leyburn Safer Neighbourhood Team
Wards of Addleborough and Hawes & High
Abbotside 0845 60 60 247
SNTLey-
burn@northyorkshire.pnn.police.uk

Sycamore Hall News

I don't want to start announcing bereavements at Sycamore Hall but losing Stan Brookes is a great loss to the hall and one that must be proclaimed. Stan was the perfect gentleman both loved and respected by everyone here.

May Party. Quite a lot of people turned out "not outside it was too cold" but down to the lounge where Michelle introduced us to Ruth who sang for us accompanied by her personal backing equipment. She came to entertain, and that's just what she did. 2.40pm and no-one asleep, that must be good! Careful, Michelle, you might finish up with a nightclub here with people like Ruth; she certainly had the equipment of both sorts. Calm down, Derek. Tea and biscuits followed then after another session of songs everybody said what a good afternoon they had had.

For the near future. June 28th, actually, Michelle has organised a group of entertainers named 'Bring me Sunshine'. There will be a small entrance charge for visitors, and a raffle. I hear this is not to be missed. It starts at **6.00pm**.

Surprise, surprise! No, Cilla is not paying us a visit but we have finally got permission from the National Park to re-site our summer house. We are hoping for the shift to take place shortly.

Derek Ramsden
(We would like to send our condolences to Derek on the death of his wife)

Competition

There are hundreds of 'Dales' in Yorkshire.

See if you can find these:

1. Primate
2. 'Coming through the...'
3. Lost rec.
4. Wiliam's!
5. Isn't a ton
6. Round with spokes
7. Further across the Atlantic
8. Sounds a joker
9. Red slab
10. Means 'pigs'
11. Bacon, eggs, mushrooms, sausage etc.
12. Pigeon
13. It stings
14. Long tooth
15. Nearly hardwood



Mystery picture. It still stands, but with its roof off. Where? Last month's was looking into Lodge Yard in Askrigg.

Answers for Last Month

Sports and games. Anagrams

RUGBY LEAGUE

TABLE TENNIS

FIVE A SIDE

HILL WALKING

WATER POLO

SHINTY

ABSEILING

MOUNTAINEERING

WHITE WATER RAFTING

CARPET BOWLS

POTHOLING

PARAGLIDING

LACROSSE

ATHLETICS

There was a good number of entries and the winner was **Jane Hepworth, Muker.** £20 prize has been sent to the charity of her choice..

The Wensleydale Tournament of Song AGM

The Annual General Meeting of The Wensleydale Tournament of Song will take place in The Methodist Schoolroom, Leyburn on **Friday 15th June at 7.00pm.** Everyone is welcome. Please come along to this important meeting and help the committee to shape future festivals

Gayle Mill in June

Summer Family Fun Arts & crafts activities

Saturday 2nd June 2012 10.00am – 12.00pm - £2.00 entry (inc. drink and art activity) under 5's free

A Royal Celebration - Learn about the textile industry and find out how cotton was produced here in the earliest years of the Mill. Make crochet bunting, decorate your own paper crown. Activities are suitable for 5-11 year olds however younger or older children may still enjoy taking part.

Demonstration Tour of the Victorian Saw Mill

Sunday 3rd June 2012 11.00am and 2.30pm - £10.00 Children under 16 £5.00 (inc. refreshments)

During a tour you will have the chance to see and hear the original 1879 water-powered Victorian woodworking machinery being demonstrated.

Introduction to Dry Stone Walling – Hands on course

Sunday 24th June 2012 (tbc) 10.30am – 4.30pm - £10.00

A days introduction to dry stone walling using traditional methods. Get hands on rebuilding a wall on site at Gayle Mill.

Details and booking **667320**

Email confusions ...

As I talk to customers it is very apparent that email, which should be very simple to use, actually causes a lot of confusion – especially when you access email from more than one device.

This also links in nicely with my theme of a computer glossary, as there are lots of acronyms used when it comes to email!

People access their email in lots of ways, but they all have one thing in common – when someone sends you an email it is sent first to the company who provides their email service and then automatically sent on to the company providing your email service. The email is then collected by you logging in to your email account on your email provider's computer system. Commonly you can access your email account using a web browser (such as Internet Explorer, Firefox, Google Chrome or Safari). This is called webmail and is the normal way to access gmail, Hotmail, Yahoo and many email types provided by Internet Service Providers. If you do this then you are only looking at a copy of the email stored remotely on an email server. The email is never really stored on your computer. This has the big advantage that it doesn't matter where you are in the world: you can look at new and past emails and you can send emails from anywhere. The disadvantage is that you are trusting a company to store your emails safely and securely for you because you never actually store them on your own computer. If their computer system has a problem and they lose your emails there won't be any way to get them back (and since most consumer email accounts are free they don't have a big incentive to worry too much). Another disadvantage is that if you have internet problems you can't access your email – not even your old email – until the connection is fixed. Another approach is to use an email client application to access your email such as Outlook Express, Outlook, Eudora, Windows Live Mail, Mac Mail or Thunderbird. This is where things get confusing as these programs can be set up in many different ways. The most common way to do this is to use a POP server

(standing for Post Office Protocol). This will allow your client software to access the server holding your emails directly and send it instructions. When accessing emails your client software usually collects all of your email in one go and downloads it to your computer – that is it gets a copy of each new email and stores it on your own computer. This has the advantage that even if your computer loses its internet connection you can still read your own email and you have the ability to back it up in case of problems. Most clients also have the option of leaving a copy of your emails on your email provider's server so that you can still access it from other devices. In order to set up a mail client you will need to know the name or your provider's POP server and your user ID (commonly your email address) and password. You will also need to know if they use encryption to send you your mail privately. Sending email from your mail client requires the use of another server and you will need to know its name. This is usually referred to as the SMTP server (standing for Simple Mail Transfer Protocol). You will also need to know if your SMTP server needs you to provide a user ID and password and whether it uses any form of encryption to keep your communications private. Again all sent email is stored on your own computer so you are not relying on a company to store copies.

This is a very simplified overview of how email works and there are lots of variations.

If you have any questions do feel free to drop me a line or give me a call. You can find contact details on my website: www.dalescomputerservices.com.

Carol Haynes

LVA Bike Ride

This year's LVA sponsored bike ride will take place on **13th June** starting at Leyburn at 10.30am and ending in Hawes at around 3.30pm. Last year this event raised over £17,500 for local good causes, so sponsor your licensee or other rider and make this a bumper year for the ride.

Askrigg School News

Askrigg School's Walking Bus Celebrates Its Fourth Birthday

Every member of the walking bus came to the fourth birthday party and even the whole school came.

We have five bus stops in the village. We celebrated with signs and balloons. It was joyful and everyone laughed when they got their balloons.

Alana

Year 2

Great North Air Ambulance Bags 2 School Collection

With very many thanks to everyone who sent in bags for our recent collection - we had our best ever collection! There were 1078kg of clothing, bedding etc and this raised the fantastic amounts of £485.10 for the Great North Air Ambulance and



£323.40 for school.

We try to have a collection twice a year, and now many people who have no direct connection to school send us their unwanted clothes. This really has to be one of the best ways of recycling!

Pictured is Jim who collects the bags, Mrs Fawcett, Teaching Assistant, and members of the school's Eco Group.

East Witton Village...

will be holding an Open Gardens Event on **Sunday 3rd June** from 1.00 – 4.00pm. Refreshments will be available in the Parish Rooms. There is a small admission fee and all money raised will be donated to British Heart Foundation and The Guide Dogs for the Blind.

1st Hawes Brownies

Brownies had a great time at the Dales Museum making butter and bread using buttermilk, and have also been preparing for the Jubilee party. I have handed over the leadership to Carol ably assisted by Delwyn and Charlotte. The Brownies asked me to help out one week (under false pretences) and presented me with a lovely collage memento of each Brownie and a beautiful felt picture. What a lovely surprise and a lovely gift to keep. We have also presented Jenny, who was an invaluable adult helper, with a picture.

We are very lucky in Hawes to have such great support for a full Brownie Pack. This can only keep running with willing volunteers to help. We still require an adult helper to assist at weekly meetings 6.00 - 7.30pm Tuesdays (only 40 weeks per year). A planning meeting is held each term to prepare for the following term (only 3 per year). If you can help, please contact **Carol on 667234**.

This could be a life changing moment and very rewarding. I do hope someone will come forward to fill this role and support a great bunch of girls.

Linda Reynolds, Brownie Admin

Richmondshire Orchestra in Askrigg

The Richmondshire Orchestra will give its annual concert in St. Oswald's Church, Askrigg, **on Sunday 17th June at 3.00pm**. The programme will include Richard Strauss's Oboe Concerto with guest soloist Philip Cull, Smetana's Vysehrad from My Fatherland, and Grieg's Symphonic Dances. The conductor will be Hugh Bowman, and tickets £8 at the door (accompanied children free) or by phoning **622665**.

News from Thornton Rust

After more than 30 years of fundraising the ladies of the Thornton Rust Entertainment committee are delighted to discover that the Institute Management team have been successful in obtaining a grant from the Leader fund towards a significant portion of the cost of building a new kitchen at the Institute. Anyone who has been to an event at the Institute may well be aware of the less than adequate kitchen facilities from which wonderful teas have been produced!

The grant only covers part of the costs and much of the Institute's reserves will be used in completing the works therefore the village ladies will be baking mouth watering delights to sell at a series of fundraising events. It would be wonderful if the people from villages away from Thornton Rust could support us by dropping in to one or more of the scheduled occasions.

Thursday 31st May and Wednesday 20th June 10.00am – noon a coffee morning with teas, cakes, produce and tombola entry £2.

Sunday 22nd July 10.00am onwards, a table top/car boot sale £5 per table with refreshments supplied at the Institute. Sellers to set up from 9.00am. Anyone wishing to reserve a table to call **663375**.

There will also be a Scarecrow trail over the August Bank Holiday weekend, with details to published closer to the time.

Please support one or more of our efforts if at all possible.

The ladies of the Thornton Rust Entertainment Committee

My, It Got Cold...

on the May Bank Holiday Monday at the plant sale in Castle Bolton But earlier it wasn't so bad, and we made just over £226 for division between our mission partners Scripture Union and Mission Aviation Fellowship.

So we have quite a bit of stock remaining and plan to run the sale on the next **Monday BH June 4th, from 10.00am to 12.30pm** again.

Robert Hall

Leyburn Bowling Club

After a week's delay due to the weather and green conditions the Club finally got its 2012 season under way on Sunday 22nd April with a club pairs competition which was won by Mervyn Buckley and Ann Steggles.

Wed 2nd May, saw our first match in this year's J S W Bowls League, an away fixture at Northallerton. On a bitterly cold evening Northallerton appeared to adapt to the seemingly freezing conditions better than we did and Leyburn lost the match by 3 games to 1, with an overall points score of 71 against 51, this resulting in a match score of Northallerton 6 Leyburn 1. Wed 9th May, we had our second league match, away to Dishforth. On this occasion we had to contend with steady rain throughout the entire match. Pleasingly we gave a better account of ourselves and this time Leyburn won by 3 games to 1, with an overall points score of 79 to 60, and a match result of Leyburn 6 Dishforth 1.

Please note the Club will be holding a car boot sale at Wensleydale Rugby Club, Leyburn, on **Sunday 8th July, with an 8 00am start**

Drop-off points and contacts

for news, articles, reports, letters, what's on dates, competition entries, suggestions and comments:

Hawes:	Alan S. Watkinson, Burnside Coach House.	667785
Gayle:	Lorna Ward, East House	667405
Bainbridge:	Hammond's Butchers	650631
Askrigg:	Rima Berry, 8 Mill Lane.	650980
Carperby:	Margaret Woodcock, Bella Cottage	663488
West Burton:	Nadine Bell, Margaret's Cottage	663559
Aysgarth:	Hamilton's Tearoom	663423
Redmire:	see Carperby above	
Thoralby:	Sandra Foley, Shop	663205

National Park Ranger Report

There are some great areas to explore locally with your dog and with many dog friendly establishments in the National Park, and it's important to remember a few things when out and about with your dog.

There have recently been two incidents where a loose dog has chased ewes and lambs which have unfortunately resulted in both ewes and lambs dying. It makes no difference if you're local or a visitor, it's important to keep your dog on a lead during lambing time. Remember to take care around cows, especially when calves are present. I get asked frequently about walking through fields of cows when you have a dog with you.

If you get surrounded by cows when you have your dog with you; stay calm, release your dog from the lead and continue to walk slowly towards the nearest exit from the field. It may well be possible that you can take an alternative footpath, avoiding cows altogether, but obviously this is not always possible.

This area, both in the valley bottom and on the moors, is important for many ground nesting birds. Free roaming dogs off leads cause disturbance to these birds, either flushing the parent bird off the nest, which causes the eggs to chill and fail, or if young chicks have hatched, your dog can scatter these birds away from the parent, which may mean the possibility of them being preyed.

If you don't know your Curlew from your Lapwing, then call into a National Park Centre for a leaflet on the most popular moorland birds.

And finally, not all visitors like dogs, so please be considerate when passing other walkers and please clean up after your dog.

If you experience any difficulty using any of the public rights of way in the local area, please do not hesitate to contact me at Hawes National Park Centre on **666220** or call in. matt.neale@yorkshiredales.org.uk

Enjoy the summer.....

Matt Neale
Area Ranger

Manchester - Carlisle Passenger Service.

The Friends of the Settle-Carlisle Line have teamed up with Ribble Valley Rail to campaign for a passenger train service between Manchester and Carlisle - via our world famous line.

Presently, Settle-Carlisle services all run to and from Leeds. Yet there is a first class, underutilised and recently upgraded, railway line onto the S&C from Manchester. Trains from Manchester on that line presently terminate at Clitheroe, just 12 miles short of a junction with the S&C at Hellifield.

FoSCL Chairman Richard Morris said, "The success of the Sundays-only DalesRail summer-time trains from Lancashire tells us the demand is there. The Manchester conurbation and Lancashire are huge untapped sources of visitors to the S&C and to Carlisle itself. Conversely, people in the Yorkshire Dales and the Eden Valley presently have no direct rail service to Manchester - and to Manchester Airport."

"The current S&C timetable dates back to the 1980s when the S&C was under threat of closure. It is now time for the rail industry to wake up to the reality that the S&C is here to stay and to exploit its massive potential."

Project Co-ordinator Paul Levet said, "This is a yawning gap in the rail system. Filling it would be relatively easy. The track is there and so is the need."

"You can help us firm up the case by completing a simple questionnaire on our website at www.foscl.org.uk"

This is the first major campaign undertaken by FoSCL since the hugely successful campaign to save the line from closure in the 1980s. The Settle-Carlisle rail journey is rated among the World's most scenic. The line now carries more passengers and freight than ever before

WHAT'S ON LISTING;

May

- 27 Pentecost Praise. Bainbridge Green, 3.00pm
- 29 Coffee morning and stalls. Hawes Methodist Rooms, 10.00am to noon
- 31 Gayle Ladies; slides of Botswana and Vietnam. 7.30pm

June

- 2 Coffee Morning; St Matthew's Church, Stalling Busk. 10.00am to noon
- 2 Men's Prayer Breakfast at Sycamore Hall. 8.30am. Speaker: Bryan Mason. Christians inn Sport
- 2 Gayle Mill Royal Celebration. 10.00am to noon. See p.17
- 2 Gunnerside unveils its Rose Arch. 5.30pm. Muker Silver Band and fruit punch!
- 3 Gayle Mill Demonstration tour. See p.17
- 3 Jubilee Karaoke with live singer Ruth Brittain at the Fountain Hotel, Hawes. From 9.00pm.
- 3 Special Jubilee Church services:
9.30am Holy Communion, Castle Bolton and West Witton
10.30am Children's Holy Communion at St Oswald's, Askrigg
10.30am Churches Together in St Margaret's, Hawes..
10.30am Bainbridge service on the Green. See p.11
11.00am Holy Communion, Aysgarth
11.00am Holy Communion, Wensley
- 4 West Witton Jubilee celebrations. p3
- 4 Castle Bolton plants for sale. See p.24
- 4 Afternoon Tea and stalls, 1.00 to 3.00pm at St Margaret's Church, Hawes
- 4-9 'A Queen's Life'. Bolton Castle celebrates Mary Queen of Scots. 10.00am to 5.30pm.
- 6 Songs of Praise for the Diamond Jubilee with Askrigg Ladies Singing Group at St Oswald's, Askrigg. 7.00pm
- 7 Askrigg Friendly Society Service at St Oswald's, Askrigg; 7.00pm.

- 8 Jubilee Concert; Hawes Market Hall, 7.30pm. See p.4
- 8,17,23 Wensleydale Railway events. See p.23
- 9-17 'Britannia Rules the Waves'! Art Exhibition, Askrigg village Hall.
- 12 Decorative and Fine Arts Society, Middleham Key Centre, 2.00pm. See p.5
- 13 LVA Bike Ride—Leyburn to Hawes. See p.18
- 14,21,28 Wensleydale Country Market in Methodist Church Hall, Leyburn 10.00am to 12.30pm..
- 15 Museum Friends Gift Day; 7.30pm plus 'dialect poems and stories'.
- 15 Wensleydale Tournament of Song AGM See p.17
- 16 Coffee Morning at Bainbridge Methodist Chapel; 10.00am to noon for Church Funds, St Oswald's, Askrigg
- 17 Concert at 3pm by Richmondshire Orchestra at St Oswald's Church, Askrigg
- 17 Walk; West Burton circular. Meet Aysgarth Falls N. Park Centre 11.00am. 6 miles
- 17 Table Top sale in Market House, Hawes
- 19 Afternoon Tea and stalls. 1.00p to 3pm. St Margaret's, Hawes
- 20 Olympic Torch comes to Aysgarth Falls
- 21 Hawes W.I. "Bess O'leary. Methodist rooms; 7.00pm.
- 22-24 St Andrew's, Aysgarth Flower Festival. See p.23
- 23 Christian Theatre. See p.24
- 23 Hawes Gala. See p.26
- 23 Walk; Mossdale and Cotterdale. Meet Appersett Green, 11.00am 8 miles
- 26 YDNPA full authority AGM, Yoredale Bainbridge, 10.30am
- 26 Coffee Morning and a stalls; Hawes Methodist rooms 10.00am to noon
- 27 Blood Donors at Market House, Hawes
- 27 Outing to Wallington Hall from West Witton. Depart Fox and Hounds; 9.00am. For details or to book ring **624109**
- 28 Wildlife of Snaizeholme; Meet Mirk Pot House 2.00pm.

JOEM to Visit Wensleydale Railway

A special locomotive will be visiting Wensleydale Railway in June, to provide driver experience, photo charters and other special services.

The highly-respected North East Locomotive Owners Preservation Group has agreed that J72 No 69023 (often known as Joem) will visit Wensleydale Railway for several weeks, starting with the Bank Holiday weekend, June 2-5. This locomotive was built in Darlington in the 1950s, to a design by William Worsdell dating from 1889. It is too small to operate the scheduled WR timetable and so will be part of a special events programme.

A June excursion from the East Riding to the Wensleydale Railway is already fully booked so a repeat event will be run on Friday July 27. If you have friends or relations in the ER who are interested in the second excursion, they should book directly with Wold Travel (not WR for this one) on 01759 380407. On June 17, there will be a rail/coach excursion in the footsteps of artist JMW Turner, who visited Wensleydale and Swaledale in 1816 – phone 08454 50 54 74 to book.

June also sees the half way mark in a series of 8 guided walks during the year to mark the Queen's Diamond Jubilee. The walk uses existing footpaths to cover the 40 miles distance (approximately 60 km) between Garsdale and Northallerton i.e. the length of the original nineteenth century railway. The section from Garsdale station to Hawes was walked by a WR group on May 4 and proved to be a marvellous walk with great views, accessible from either end of the Settle-Carlisle line by public transport, and also from Wensleydale. This is because it is a linear walk (with a short section on the new Pennine Bridleway to the Moorcock Inn) but made possible by the use of the Little White Bus service one way, and walking the other.

The walk on June 23 is 6 miles from Hawes to Bainbridge (with its new Archimedes Screw water power project) and includes travel on the Vintage bus from Redmire (fare payable). These walks are 'turn up and go' i.e. no need to book, whereas it is essential to book for rail/coach excursions.

As always, Wensleydale Railway and its many volunteers would love to welcome you and your family. It is advisable to check before setting off that it is an operating day e, to avoid dates when there are no trains in service. Timetables are free from the DCM, Ropeworks and other local outlets. For more information, see www.wensleydalerailway.com

Ruth Annison

PS A picture on the front page of the Darlington and Stockton Times on May 4 appeared to show Her Majesty the Queen leaning out of the cab on a locomotive at Leeming Bar! - but careful readers will have discovered that the photo was a promotional item

Sponsored Parachute Jump

Kim McCarthy's sponsored Parachute Jump for Yorkshire Cancer Research has so far raised over £1,300 - and she's still counting!

If you sponsored Kim and have not yet paid up, or if you forgot to sign the sponsorship form and now wish to sponsor Kim, please take your money to her at the Fountain or at the Pantry in Hawes

ST. ANDREW'S CHURCH FLOWER FESTIVAL **THURSDAY JUNE 21ST - SUNDAY 24TH**

Thursday June 21st We will be extending a free invitation to parishioners to come and view the arrangements from six o'clock onwards.

Open to the public from **10.00a.m till 5.00p.m. on the Friday and Saturday, and from 1.00p.m. till 5.00p.m. on the Sunday.**

We will be serving a Bistro type lunch and tea on those days. We would be so glad of help with baking and serving. Please contact Val Gladman.

There will be a concert by Leyburn Band on Saturday.

The whole festival will be complimented by a Café Church on the Sunday morning and Songs of Praise in the evening.

Heavens Above

This month sees the astronomical highlight of the year - **a transit of Venus** when we see the planet as a tiny black dot gliding slowly across the face of the Sun. Transits of Venus are extremely rare. They come in pairs 8 years apart, with each pair being separated by more than a century and can only take place in June or December. This month's transit, on June 5th-6th, is the second of a pair (the first was in June 2004) which means if you miss this one, you'll have to wait until 2117 to see the next. Unfortunately for us most of this particular transit occurs well before sunrise (just after 4.30 BST on June 6th) with only the last hour or so visible from our part of the world. Even so it's still well worthwhile hauling yourself out of bed to view the event, as we'll never see another one like it in our lifetime.

The Sun rises in the NE at this time of the year so you'll need to find a site with as flat a northeastern horizon as possible to get the best view. Whatever you do, don't under any circumstances look at the sun directly through binoculars or a telescope.

You will seriously damage your eyesight if you do, and could even blind yourself. Instead try projecting the Sun's image via the eyepiece of your telescope or binoculars onto a shielded piece of white card. Focus this carefully and with any luck you should easily be able to make out Venus as a tiny black dot silhouetted against the solar disc. Using this technique will also allow you to have a go at photographing the spectacle without having to worry about damaging your camera or your eyesight. Even a simple automatic camera should do the trick. If you'd like to find out more about this historic event go on-line and visit www.transitofvenus.org. Have clear skies!

Al Bireo

Plant Sale

St. Oswald's Church, Castle Bolton
Monday 4th June 10am-12.30pm
Funds for Mission Partners

In Turner's Footsteps - Wensleydale

Friends of the Dales Countryside Museum and visitors enjoyed a fascinating evening on 18th May when Professor David Hill, an authority on Turner, gave an enthralling insight into the life and journey of one of Britain's greatest artists.

On one wet day, in 1816, Turner and his horse – carrying all the essentials for his sketching – found himself descending to the beauty of the mirror-like 'Simmer Lake' – and began his work just above the Carlow Stone.

The spot is now marked by a wooden Turner Trail seat specially made at Gayle Mill for the Raydale Project.

He rode on to Askrigg which he sketched extensively. In his initial drawing – later to become another of his celebrated paintings of Askrigg village - Semerwater mysteriously appears! This was true artistic licence as the lake must have been added in when the painting was completed. As you might have realised - it's not possible to see Semerwater from Askrigg but Turner frequently changed the perspective of many of his watercolours to give a more evocative feeling of the landscape.

The next day he sketched Mill Gill Fall, now completely overgrown, but he illustrated this as a truly magical glen with little foliage to reveal the Fall's spectacular features.

Let's hope we can look forward to a return visit by Professor Hill in the future – perhaps we can make a date for 2016 – Turner's bi-Centenary!

Christian Theatre

7.30pm Saturday June 23rd

North Yorkshire Dales Biblical Literacy Project

PRESENTS

"Hocus, Pocus, Mumbo Jumbo and a Fig Tree"

By: The Applecart Theatre Company

Richmond Influence Church (Victoria Road)

Tickets : £9 – Concessions £7.50.

AND ALSO

"Gospel on a Washing Line" By : Noah's Nanny-goats

At : The Key Centre Middleham (Park Road)

Tickets : £5 – Concessions £4 . Time : 7.30pm

Matinee at West Burton Village Hall : 2.30pm

Come along and bring a friend – or two!

AYS GARTH SURGERY ROTA Wb - week beginning										
Wb	Jun 4th		11th		18th		25th			
Day	am	pm	am	pm	am	pm	am	pm	am	pm
Mon	C	C	F	F	J	J	F	F		
Tues	C	C	W	W	F	F	J	J		
Wed	J	J	F	F	J	J	F	F		
Thur	F	F	W	W	F	F	J	J		
Fri	J	J	F	F	J	J	F	F		
Doctors: F - France, J - Jones, W - West , C - Closed										
Morning Surgery: 9.00 - 10.30 am (no appointments)										
Afternoon Surgery: 4.00 - 5.30 pm (appointment only)										
<i>For appointments and all enquiries ring 663222</i>										

HAWES SURGERY ROTA Wb - week beginning											
Wb	Jun 4th		11th		18th		25th				
Day	am	pm	am	pm	am	pm	am	pm	am	pm	
Mon	C	C	W	W	F	F	J	J			
Tues	C	C	F	F	J	J	F	F			
Wed	F	F	W	W	F	F	J	J			
Thur	J	J	F	F	J	J	F	F			
Fri	F	F	W	W	F	F	J	J			
Doctors: F - France, J - Jones, W - West , C - Closed											
Morning S'y: 8.45-10.15 Tues till 10.45 (no appointments)											
Afternoon S'y: 5.00-6.00 Tues 1.00-4.00 (appointments only)											
<i>For appointments and all enquiries ring 667200</i>											

Healthy Walking Programme

June	Time	Start/Finish	Route
Thu 7 th	10:15am	Leyburn,Marketplace B	Leyburn Shawl
Mon 11 th	10:30am	Market Hall Hawes I	Appersett Viaduct
Wed 13 th	11:00am	Sports Centre Askrigg B	Worton Bridge
Thu 14 th	10:15am	Middleham Market Cross I	Cover Banks
Wed 20 th	10:30am	Market Hall Hawes B+	Hawes & Gayle
Mon 25 th	11:00am	Sports Centre Askrigg B	Worton Bridge
Wed 27 th	10:30am	Market Hall Hawes I	Aysgill Force

The Walk for Health walks continue locally for all, both flat low level walks with no stiles and no more than a mile (B) and longer walks up to 4 Miles (I) . They are a friendly, informal way to meet people and have a chat, whilst getting fresh air and exercise. Turn up in suitable outdoor wear and be assured of a friendly welcome. All the start times of the walks are designed around the local bus timetable.

Churches Together in Hawes:

The Queen's Diamond Jubilee Service

Sunday June 3rd, 10.30am

A Service of Thanksgiving

will be held in

St Margaret's Church

Followed by a buffet lunch

at a cost of £5 per head

Proceeds will go to the St Margaret's Church Renovation and Improvement Fund.

Bartle—a Two Dale Community Play Project

Richmond based North Country Theatre are looking for recruits to join them in another Community Play project and have set up two dates for preliminary meetings in Wensleydale.

Community Plays take many forms but typically a large number of volunteer performers come together to work with a professional director and production team to create a new play, usually based on local history myth or legend.

Some may remember the fantastic Passion Plays of 2002 with the Mackenzie Thorpe scenery which were performed in churches across the district, from Grinton to Ripon Cathedral

More will recall “Last Dance of a Dalesman” in 2005 when more than 40 performers from Hawes Leyburn Richmond Reeth, Hackforth to Hardraw performed to great acclaim in spectacular venues like Richmond Castle Hardraw and Kiplin Hall Gardens

Now they are planning a new play, a sort of Per Gynt for the Dales, based on two pieces of local folklore, The Reeth Bartle Fair and the Burning of Bartle from West Witton. They plan to make a link with Richmond’s Norwegian twin district, Nord Fron Kommune.

No special experience is required. If you want to know more, if you have local history or folklore knowledge to offer, if you want to act sing or work backstage, come to **Dales Countryside Museum Hawes on 14th June**

at 7.00pm or Wensley Village Hall July 3rd at 7.30pm or contact office@northcountrytheatre.com

These sessions are partly funded by the RDPE Leader Programme, NYCC and LEADER Partnership.

Drop in for Coffee
St. Andrew’s Church
Tuesday 12th June 10am– 12 noon

The Coach House, Aysgarth Tel: 663811
 £1 to include coffee/tea and biscuits.
 Proceeds will be divided between the church and a charity of the host’s choice

