

Upper Wensleydale Newsletter Issue 166—February 2011

Features

Editorial	2
Three months in Cashmere	6
West Burton School News	8
Askrigg School News	8
Dalesplay	10
The Bible- “A Right Riveting Read”	12
Carperby Pavillion Update	14-15
Police Report	18
Ask Craske!	22-23
Hawes School News	24
Plus all the regulars	

Published by

The Upper Wensleydale Newsletter
Burnside Coach House,
Burtersett Road, Hawes DL8 3NT
Tel: 667785 Fax: 663559
e-mail: alan.watkinson@virgin.net

**Newsletters on the Web, 2003-09 simply enter
“Upper Wensleydale Newsletter” in, say, Google.**

Printed by Peter C. Wood and ASW
and collated, folded, stapled by
newsletter volunteers at the
Wensleydale Centre, Yorebridge, Askrigg

Committee: Alan S. Watkinson,
Barry Cruickshanks, Sarah Dinsdale, Sue E. Duffield,
Sue Harpley, Adrian Janke, Alastair Macintosh,
Neil Piper, Tom Stephenson (Bursary student),
Janet W. Thomson,

Advertising

Boxed adverts: £5, £10, £15

There is a one-third reduction for six issues or
more, so for twelve issues the totals are:

£40, £80 or £120

Greetings etc. £2.00

What's ons (non-commercial) are free

Contacts:

For Hawes area and westward: **Barry
Cruickshanks, Ashfield, Hardraw: 667458**

For elsewhere: **Sue Duffield, Fellside,
Thornton Rust: 663504**

*Whilst we try to ensure that all information is correct we
cannot be held legally responsible for omissions or
inaccuracies in articles, adverts or listings, or for any
inconvenience caused. Views expressed in articles are
the sole responsibility of the person by-lined. Articles by
committee members carry just their initials. We appreciate
being asked before any part of the Newsletter is repro-
duced.*

Editorial

There's one thing for certain: cuts are nasty, whether on the end of your finger, the ending of your bus service, or even worse, your job; and they can take a while to heal.

There is no doubt they are coming; we are regularly being told that 2011 is going to be hard and it seems that most people agree that some belt-tightening is necessary. The big debate is about how much, who might be hit hardest, and who or what is to blame. There's not a lot of point in blame, perversely attractive though it can be, unless we can learn from it, but there is much to be gained from discussing where cuts should fall, and what can be done to ease the effects.

In times of prosperity and growth a great deal of money flows into an area and ours is no exception. There has been almost no unemployment for years; grants have been forthcoming from several sources for new projects large and small (some would say over-expenditure for such a small population); some public services have improved; remind yourself how few buses there were ten or fifteen years ago, but then ask if it were not for free rides for the over sixties how much they would be used now! Mind you, some services have been reduced; we don't need to be reminded of refuse-collection frequency or post offices services, and it is a constant struggle to maintain standards.

It therefore seems strange that as cuts are on the way more 'power' is to be handed down to, as they say '*local authorities and community groups*', who are presumably expected to operate with less money - hence the stress on volunteering which in our area already stands at a higher level than in many others. But how 'local' do they mean? Certainly not regional; York-

shire Forward, for example, is to go. County Council? How local is that? District Council? Rather than staying local, adjacent district councils are looking to join forces in some departments to save money. Then town and parish councils; it cannot be claimed that people are queuing up to serve on them - we can't always find enough nominees to vote for, so some councillors are co-opted. Maybe people think that other organisations can be more effective or representative.

So which services can we, or should we, be looking to run ourselves? Schools? Private youth clubs? Have you tried to get paid people to run them, never mind volunteers? Local control of street lighting and cleaning? Really? More control over planning? Now there's a minefield. There are some issues where an objective view from outside is the only way to counter vested interest or the claim that some people 'get away with it'.

You might conclude that we are a little sceptical about all this! However, when the inevitable cuts come, we will need to be more socially responsible. There is so much that we can each do to play our part, and we already have a stack of examples of those who quietly 'get on with it' - a bit of public gardening, provision of, and repairs to, village seats; volunteers doing footpath and walling repairs; checking up on poorly neighbours and running them to the surgeries or Friarage, coffee mornings as means to get together but also to raise money for, and awareness of, those less fortunate; societies and clubs a-plenty. This is real community; it's what amazes visitors. These are the 'extras'; but as for local authorities and community groups taking on more power and responsibility from central government ... we aren't at all sure.

Eunice



The winner was **Sophie Handley, Bainbridge.**

**The next issue will be produced
on February 23rd and 24th.
Deadline THURSDAY
FEBRUARY 17th**

Drop-off points and contacts

for news, articles, reports, letters, what's on dates,
competition entries, suggestions and comments:

Hawes:	Alan S. Watkinson, Burnside Coach House.	667785
Gayle:	Lorna Ward, East House	667405
Bainbridge:	Hammond's Butchers	650631
Askrigg:	Rima Berry, 8 Mill Lane.	650980
Carperby:	Margaret Woodcock, Bella Cottage	663488
West Burton:	Nadine Bell, Margaret's Cottage	663559
Aysgarth:	Hamilton's Tearoom	
663423		
Redmire:	Ann Holubecki	622967
Thoralby:	Sandra Foley, Shop	663205

Campaign to Protect Rural England

Do you have ideas to start a new business or help your current business but not enough money to fund them ?

Perhaps you run a small shop and would like to employ help at unsocial hours.

Do you need a subsidy for a training scheme, or working from home, or perhaps you've got a good idea for an enterprise and need help to buy materials? If so

CPRE Wensleydale

would like to hear from you.

We have limited funds available to encourage small projects which enhance rural life and contribute to the vitality of our villages.

You need to contact:

Dr Kristin Whalley. Chairman, 663885

and be prepared to submit your plan in writing to the local CPRE group.

We look forward to hearing from you.

Hawes Gala

**Please note that the A.G.M. will be held
in the back room of the
Fountain Hotel, Hawes, on
Wednesday February 23rd at 7.00pm.**

Mick Rhodes

The Annual Winter Ball

Fairy Dust & Fascinators

**Last few ticket from Streetwise
667192 or 666004**

Simonstone Hall

Friday 4 February 2011

In aid of Hawes Gala

Lecture at the Museum

"Around the World in Petticoats and Stays"

Given by Susan Bassnett, writer and Professor of Comparative Literature at Warwick University, and partner of the late Geoffrey Moorhouse,
and delivered in his memory.

Friday January 28th, 7.30pm

Competition

A Christmas one was compiled and got lost in the system! It would be a shame to leave it for a year, so have a go now!

December/Christmas-related anagrams

EPIC MINES
EMI NEWS
STAIN SAT THERE
CLAIR NOGGINS
JAM YON PER DASH
DUSTING D' HAM CRISP
O SCATTER ONE RIDE
AAA SURGES CUT US
TIME STOLE
KNIT WILDER BEAM
COINERS WET SLIT
HASTY STORED
DO NINE WAGGLE SOCKS
HE GRAPHITE
SANTA DONE PREY
The last three have a link.

Competition

And here is this month's!

"Every second counts!" Places in the Newsletter area but with alternate letters missing.

Examples: UTRET bUrTeRsEtT
WROBTOS WoRtOn BoTtOmS

1. ONEST
2. YGRH
3. EMRFLS
4. APEGEN
5. ETUTN
6. RSOU DR CR
7. RASUNREL
8. WNTWIE
9. HRTNUT
10. HRRWCR
11. PNILECN
12. LTESE
13. DELYEC
14. GRDLHA

15. NIEOM
16. ALML
17. CATY
18. CREBWRE

November's possible answers.

$$7+7)/(7+7) = 1$$

$$7/7 + 7/7 = 2$$

$$(7+7+7)/7 = 3$$

$$77/7 - 7 = 4$$

$$7 - (7+7)/7 = 5$$

$$(7 \times 7 - 7)/7 = 6$$

$$7 + (7-7)/7 = 7$$

$$(7 \times 7 + 7)/7 = 8$$

$$7 + (7+7)/7 = 9$$

$$(77-7)/7 = 10$$

$$7/.7 + 7/7 = 11$$

$$(77+7)/7 = 12$$

It was very popular but the winner selected was

Stuart Armstrong, Gayle-- chosen charity for the £20 prize:: Yorkshire Air Ambulance.

Hawes Bonfire and Fireworks,

The retiring Bonfire Committee will be holding a meeting at the Fountain Hotel on **Tuesday 8th February at 7.30pm.**, to discuss the future of the Bonfire and Fireworks display. If anyone is interested in organising an event this year, we look forward to seeing you at the meeting.

Harry Balderston

Get Ready for Spring

To coincide with National Bird Box Week (from Feb. 14th) there will be an all-day event at Gayle Mill on **Saturday February 19th** with bird boxes and all manner of garden accessories for sale.

Newsletter Distribution

Firstly, a word of thanks to James Pickard at Aysgarth Station House who for many years faithfully gave out the Newsletters with the papers over a wide area.

Secondly, thanks to Margaret Woodcock who has organised the delivery of copies in Carperby, Castle Bolton and Preston under Scar, and suggested Woodhall might like a few (and they now do!). There is a Newsletter collecting box now at Mallyan House in Preston.. Newsletters are in Redmire Shop and Ann Holubecki also delivers some; thank you to her too, and to the others up and down the dale who faithfully pick them up after printing and take them round to shops, post offices and pubs: Janette Brown, Lunds; Margaret Playfoot, Upper Dentdale; Joan and Bill Rice, Muker shop; Diane Hartley, Askrigg; Liz and Neil Piper, from Bishopdale to Wensley, Steve and Sue Duffield, Thornton Rust and Aysgarth, Andris and Cathy Bergs plus Sylvia Crookes in Bainbridge. Other committee members do the same in the Hawes area.

Many thanks too to the newsagents and shops who arrange for the Newsletters to be delivered with the papers.

Hawes and High Abbotside Parish Community Fund (The Poor's Close Charity)

The Trustees of The Hawes and High Abbotside Parish Community Fund have funds available from which to make grants to residents/organisations within the Hawes and High Abbotside parishes:

who are in need of emergency financial support, particularly where public funds are not available or inadequate;

or to support personal or community based projects of education, citizenship,

community development or which are, in any other respect, for the general benefit of residents.

The Trustees will shortly be considering applications for grants from residents or organisations in the parishes. Anyone wishing to make an application should contact **Rev A Chapman (667553) or Ian Fowler (667044) not later than 25th February.**

Money Raised

This is a list of all the fund raising for charities that we've found out about over the Christmas period:

Aysgarth Methodist Church Nativity: Children in Need and Children in Distress: **£165**
Churches Together in Hawes, Toy Service at the Methodist Church: Salvation Army **£207**
Carol singing, Churches in Hawes: Water Aid **£138**
Hawes Methodist Church for Tearfund: **£145**
Marsett Methodist Church: Salvation Army **£20**
West Burton Methodist Church Nativity, Carol singing and Christmas Eve: Action for Children **£553**
Hardraw Church: Pakistani and Haiti disasters appeal (not all at Christmas) **£200**
Doreen Whitehead: Leukaemia Research; see p. 31 **£1850**
Aysgarth St Andrew's Christmas Eve and Day; Thoraby Carol service and in lieu of sending cards; to Salvation Army **£349**
Thornton Rust Carol service for Crisis **£125**
Preston with Wensley: Children's Society **£100**
West Witton Christingle for Children's Society **£35**
Bolton cum Redmire: Carol Singing, Christmas services, Margaret Hall busking, all to St George's Crypt **£678**
Candle boxes: Children's Society **£64**
Charity concert, Hawes: Yorkshire Motor Neurone Society **£1701**

Three Months in Cashmere

At the height of the first spell of winter on Tuesday, 30th November, over 35 hardy individuals braved the snow to attend the launch of a new book in the Gayle Institute – about the same number were prevented from attending by the appalling conditions.

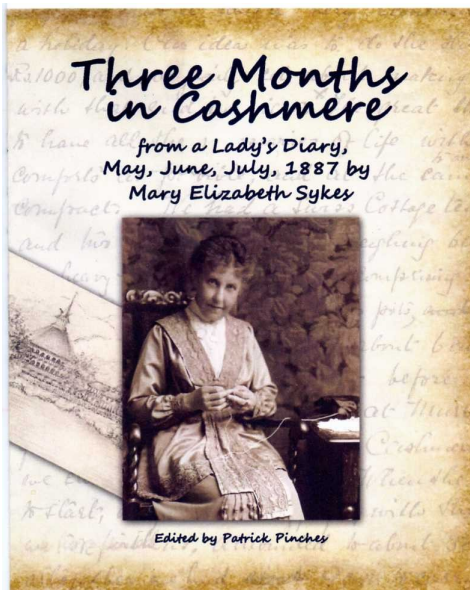
Professor Susan Bassnett kindly ‘launched’ the book by describing its contents to those attending. It has been hidden from public view for the past 124 years, since it was hand-written in 1887 as a diary recording the events of a three-month long trek in Kashmir (or Cashmere as it was known). The diarist was Mary Elizabeth (Lizzie) Sykes, the great-grandmother of Judith Pinches in Gayle. She and her husband Tom lived in Lucknow, India, for over thirty years from 1871 while he was Headmaster of La Martiniere College. This boys’ school is unique in having been awarded Battle Honours by the British Army for the part that its staff and students played in the defence of Lucknow during the Indian Mutiny in 1857. Rudyard Kipling, in his well-known novel “Kim”, based the school that Kim attended on the College, and it was subsequently used in the Errol Flynn film of the book.

Lizzie and Tom had long wished to see the beautiful Vale of Kashmir, and in 1887 they had the opportunity. The trek was almost 500 miles of walking or riding on rough paths, climbing up 7,000ft mountains, and spending the nights in tents or rest houses with very basic facilities. Lizzie kept a day-by-day diary of the journey, describing in detail the beautiful scenery, trees and flowers, and the people they met. Like so many Victorian ladies, she was an accomplished artist, and she drew many charming sketches of places they visited – the subjects of these sketches

probably look very different today, if they still exist.

The diary, in three hand-written volumes, was passed down through her family until Judith’s mother undertook the task of typing it in the 1980s. It still needed a lot of work, however, and I offered to edit it, add the drawings to the text, and find a publisher for the book. Unfortunately, I did not achieve this until after Judith’s mother had died. The publisher, Pearl Press in Newton Aycliffe, printed the book in the late summer and started marketing it in November. It is available on the publisher’s web site (www.pearlpress.co.uk) and on Amazon.

Patrick Pinches



Hawes Playgroup

We welcomed the children back to Playgroup on Wednesday 6th January. This half term we are exploring shapes and numbers, the children have already enjoyed making panda faces from circles and printing with lots of different circle shapes.

Hawes Playgroup runs on Monday and Wednesday mornings in the Market Hall from 9.20 - 11.15am. We welcome all children from birth to 3 years. Any child under 2 must be accompanied by an adult.

So why not drop in and join in with the activities including painting, play dough, sand, messy play, gluing, ride-on toys, music and snack time!

For more information phone me on **650831**.

Gillian Alderson

Housing Survey

As a National Park member of the Local Government North Yorkshire and York Housing Board, I am pleased to confirm that a North Yorkshire-wide housing market assessment survey will be undertaken over the coming weeks. The survey will cover the Dales and provide essential information on the future housing needs of local communities. I am therefore urging all households who receive a questionnaire to take time to complete it.

Whether your family needs affordable housing now or in the future, or doesn't need it at all, it's essential that we have up-to-date and accurate information to inform and shape our future plans for housing development.

During the past few years we have been challenged on the number of new

affordable homes needed in the Dales; this survey will ensure that we have an objective evidence base in terms of the need for rented housing, low cost home ownership and shared ownership.

If you have any queries about the survey please contact me: **650409**.

Yvonne Peacock

Askrigg Ladies Sing for Pleasure

The ladies will meet on the following Monday evenings:

February 14th and 28th; **March** 14th, 21st (booking 25th); **April** 7th.

Thank you to everyone who has supported us over the last year. If you love singing and would like to join us for a pleasant hour of music, we meet in the back room of Askrigg Village Hall at **7.30pm**, or contact **Diane Hartley, 650245**

The Upper Dales Mobile Skip Service Saturday February 19th Gayle Green 9.00 am - 1.00 pm

Refuse including large bulky items and recycling materials including plastic and cardboard all welcome.

Enquiries - County Councillor J Blackie
07967 589096

Time for Renewal

For readers who receive the Newsletter by post (except those who get a complimentary copy) it is renewal time for the year.

£8 (or £15 for overseas) should be sent to the Treasurer, **Janet W. Thomson, Stone House, Thornton Rust, Leyburn DL8 3AW** making cheques payable to the **Upper Wensleydale Newsletter**.

West Burton School News

The School Council raised money over Christmas for the Yorkshire Air Ambulance. Happily, the school raised £400.00 mostly via a Christmas fair, which had stalls with homemade cakes, the pampered chef, phoenix cards, and lots more of exiting things! One child from the school said "The cakes were delicious, and the phoenix cards were jolly for the occasion"!

More money was raised by the children bringing in £1.00 for a paper bauble instead of buying lots of separate cards for each of their friends, to be eco-friendly

'The School Council, under the guidance of Mrs Greenslade, did an excellent job and should be congratulated for organising and raising this vast amount of money which was collected, in person, by Tony Doveston, Air Ambulance representative for the area' said Mrs Brotherton

The Sleepy Shepherd, as that is what the



Representatives of the School Council:
Robert, Will, Sophie, Jack, Freya and Olivia

play was called, was performed by the Infant class. The Juniors played the important role of backing singers. The Sleepy Shepherd lasted for about 35 minutes full to the top of fun with singing, music, and of course, shouting! The refreshments were well-earned by the Infants and the choir.

Joe Beaton, 9 and Jack Greenslade, 9

Askrigg School News

Askrigg School News

Great North Air Ambulance Collection

We were inundated with bags for the collection in October and we raised a fantastic £305.30 for the Air Ambulance and £172 for school! The next collection has been booked for **Monday 4th April at 8:30am**. If you have any clothes, bedding, shoes or handbags we would be grateful for them; you are welcome to bring them to school any time from Wednesday 30th March.

The topic for the Autumn term was 'The Tudors', which culminated in a Grand Tudor Banquet, held at school on Thursday 16th December. The banquet was attended by many guests including Yvonne Peacock, Chair of RDC; Cllr John Blackie; Ms Fiona Rosher, DCM Manager; Mr Peter Nattress, Wensleydale Rotary Club; Rev Ian Robinson, Parish Curate; Allen Kirkbride, Chair of Askrigg PC; Mrs Vanda Hurn; Mrs Diana Hartley; and Mrs Gillian Alderson and Mrs Lesley Glancy, parents of schoolchildren, who won a raffle prize of a place at the Banquet. The guests dined on game birds, bread, fruit, potatoes and chutney followed by traditional English trifle with performances by the children that they had learnt whilst studying the Tudors.





Charity Casino Night for Amala

The Wensleydale School has had links with the Amala Orphanage in the Tamil Nadu region of India for several years. Every two years a small group of sixth form students travel out to the orphanage to teach and play with the children and help with necessary maintenance or building projects, taking as many appropriate resources with them as they can.

Students are responsible for raising all the funds for their trip and to this end two of them, Harry Dinsdale and Robert Jauneika are hosting a Black Tie Casino Night on **Saturday February 26th from 7.30pm** in the Wensleydale School Hall. The ticket price of £8 includes all gaming chips and canapé refreshments. There will be a licensed bar and it is therefore adults only. There will be a raffle too that already has some impressive prizes including meals at the Wensleydale Heifer, Henderson's, Saf-ron, a voucher for cinema tickets at the Station, Richmond, and a family ticket for Newby Hall. So come along with some friends, dress to impress and have a great night out all for a good cause.

For tickets and more information please call **663229 or 663513**

Advice for People With Cold or Flu Symptoms in North Yorkshire

Seasonal flu can give you any of these symptoms:
sudden fever (a temperature of 38°C/100.4°F or above), dry, chesty cough, headache, tiredness, chills, aching muscles, limb or joint pain, diarrhoea or stomach upset, sore throat, runny or blocked nose,

sneezing, loss of appetite, and difficulty sleeping.

If you have flu-like symptoms the best thing you can do is rest, take cold remedies to relieve symptoms and drink plenty of fluids. Do not drink alcohol. You may need to stay in bed for two or three days after your symptoms peak. Advice is available 24 hours a day from NHS Direct

0845 46 47

Leyburn Library

North Yorkshire County Council are proposing cuts in their library services of 28% starting from April.

Included in the proposal is the closure of Leyburn Library which will mean that apart from Hawes Library, the nearest ones will be either Richmond or Northallerton. This will be a severe blow to all the Upper Dales library users. In addition the mobile library service will be lost.

There is a consultation period ending at the end of February and forms for completion are available at Leyburn Library or at www.northyorks.gov.uk/library consultation. If you have not already made your views known do not miss out on the deadline.

S.E.D.

A Great Run

Tina Spence and Lindsey Lightowler would like to thank everyone who supported them in The Great North Run and Keilder Marathon. We raised £1280.00 for the Scott Suite Breast Cancer Unit at The Friarage Hospital.



HAWES

Dalesplay has had a little revamp over Christmas with the brilliant help of Kevin Spink and Matthew Sedgewick who kindly came in and decorated the interior. We are very grateful for all their hard work and this has allowed us to stay open as usual for all our families rather than close for painting. We would like to welcome our new Government foundation children to the setting. They are all settling extremely well and are enjoying all the different activities we have to offer.

Our after-school clubs are on again. Children at school full time are welcome to join. Monday; Cookery, Tuesday; Creative crafts, Wednesday; Green Kites, Thursday; Knitting and Sewing, Friday; Construction. All clubs £2 each week to cover costs of materials etc.

We have lots of fun activities for Half term

Monday 10.00-11.30am Chinese cooking
2.00-3.30pm Cinema experience;
Toy Story 3

Tuesday 10.00-11.30am Art Attack
2.00-3.30pm Cinema experience;
How to Make A Dragon Fly

Wednesday 10.00-11.30am Hama bead workshop.
2.00-3.30pm Chinese cooking

Thursday 10.00-11.30am Soft play 0-3yrs
2.00-3.30pm Cinema experience;
Shrek Forever After

Friday 10.00-11.30am Flower pot fun
2.00-3.30pm Fun and games
including face painting

(All workshops cost a minimal £3 per child to cover costs, booking is essential **667789**)

The children have been busy making displays for our newly painted walls and have been enjoying mark-making in a variety of mediums. We were kindly given some mu-

sical equipment from a family who attends the setting and the children have enjoyed singing on the microphone and forming their own little bands. During February we look forward to visiting the library and park and learning lots of new things. We are hoping our outdoor area will be back in use as we have been patiently waiting for the better weather to tarmac it. We will also be making some Chinese lanterns, masks and baking some tasty Chinese treats to celebrate the Chinese New Year.

Dalesplay has a variety of packages to help cater for every families needs. For more information, please pick up a leaflet or call in and have a look around the setting. We are here to help families in the Dales.

Joanne Middleton

River Bain Hydro

Unsurprisingly the construction work has been delayed by the severe weather, but the scheme remains well on course and within budget. There is now plenty to see and it has been decided to hold a viewing day before the momentous arrival of the screw from Germany. Anyone wanting to see progress on site, rather than risk life and limb by peering from Bainbridge bridge, can have a conducted tour on **Thursday 24th of February** between **2.00 and 4.00pm**. Remember this is a construction site, you will need the obligatory hard hat, so please call at the site office first before being fitted with your head protection and taken around. There will be mud so bring your Wellington boots.

Deborah Millward

Would you like someone to talk to?

The four Anglican churches in Upper Wensleydale (Hawes, Askrigg, Hardraw and Stalling Busk) have organised a team of people willing to visit others who live in the area. There are lots of reasons why someone may like to be visited – perhaps they are at home by themselves all day, perhaps they have a house full of children and no adult to talk to, perhaps they are new to the area. We are in the process of putting together a ‘welcome pack’ for people moving into the area that contains useful local information to enable people to settle in more easily. If you would like a visit or know someone who would, please contact **Margaret Iveson (tel: 667285)**

chance to look at showcases and displays)

1:30pm Local Action Group AGM - Chair/Vice chair of Management Group

1:50pm Introduction to the projects - LEADER Co-ordinator

2:00pm Way of the Roses Project - LEADER Co-ordinator

2:15pm Sowing the Seeds Project - a fertile beginning. Don Gamble, YDMT

2:30pm Update on LEADER 2010 and beyond - North Yorkshire County Council, LEADER Co-ordinator

2:45pm Q and A. Thanks.

3:0pm Event Closes

Venue: Middleham Key Centre, Park Lane, Middleham.

Rima Berry

Dales LEADER AGM and Projects Update

The Yorkshire Dales LEADER Local Action Group Annual General Meeting will be held **on Wednesday February 9th, from 1.00pm**, at the Middleham Key Centre.

The AGM will be followed by presentations from LEADER-supported projects and there will be opportunity to see displays from many other LEADER supported projects including:- *Lower Wensleydale Youth Worker project, Long Preston Deep's wet grassland project and the Caring for the Parish Support* as well as meeting members of the LEADER team, NYCC and Yorkshire Forward.

All members of the community with an interest are welcome to attend. Please contact **01609 532681** if you would like to come to confirm numbers for catering.

Meeting Timetable:

1:00pm Registration (Tea and Coffee,

Exhibition

**at the National Park Authority offices
Yoredale, Bainbridge**

**Sprinkled with Colour and Magic:
Abstract and Landscape paintings by
John Cockshaw**

**January and February
open 8.30am to 4.30pm Monday to Friday**

John Cockshaw is a local artist who has exhibited in Ilkley, Skipton, Harrogate and Bradford. After studying Fine Art to Masters level in Sheffield, John undertook further Art training and experience in Devon and Cornwall, including prop and set building in theatre and film projects in schools.

His oil and acrylic paintings show colourful interpretations of landscape, whilst expressive abstract paintings are often based upon a floral and pattern based theme.

For more information about John and the exhibition please telephone **Lesley Knevitt** at the National Park Authority, **652326**

The Bible- “A Right Riveting Read”?

Soon we shall all be invited to celebrate the 400th anniversary of the King James translation of the Bible, usually called the Authorised Version. This is the version of the Bible that has deeply influenced not only the church, but our whole culture.

However, perhaps this invitation raises many questions. Is the Bible still relevant in our modern world? Although the Bible continues to be a best-seller, do people still read it? How well known today are some of the great stories in the Bible? Indeed, is the basic story of the life, death and resurrection of Jesus as well-known as it used to be?

In the world of education, we have heard much about numeracy and literacy skills. Indeed many resources have been ploughed into literacy schemes. Well, the Methodist Church in Wensleydale and Swaledale has just begun a two-year project on Biblical Literacy. This project aims to try and discover the answers to such questions as these. Part of the project is about researching levels of biblical literacy today, not only inside the church but in our villages and communities. But part is also about trying to help us all, Christians and others, to appreciate more the riches and relevance of the Bible.

If you belong to a church or community group that would like to find out more about this project and how you might be involved, please contact:

Rev. David Wood, 01677 424486
david.wood4@btinternet.com.

I am awaiting your call!

Jorvik and North Country theatre present

Egil Skallagrimson Keeps His Head

Poetry at the cutting edge!

Murder, mayhem and mirth in a Jorvik episode from 10th century Egil's Saga

DALES COUNTRYSIDE MUSEUM
HAWES DL8 3NT
Wednesday 2nd March 7.30pm
Tickets tel: 01969 666210

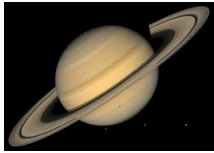
Please note: there are only a limited number of tickets left.

Panto Report

Despite the freezing snowy weather “the show must go on” as the saying goes, and we did. Some rehearsals had to be cancelled but the decision to go ahead with The Wizard of Oz was the right one. We had great audiences and would like to thank everyone who supported us and took part on stage. And behind the scenes. DVDs ARE ALREADY AVAILABLE priced £15, telephone 667241 to place an order. We hosted a Coffee Morning on Tuesday 14th December which raised £80 for our funds.

Jennifer Fawcett

Heavens Above



We had some grand starry nights during the recent cold snap, as well as a spectacular view of the total eclipse of the moon on December 21st. If you missed it, the good news is that there are two more lunar eclipses coming up this year—one in June and the other in December. The bad news is that from the U.K. we'll only be able to catch the tail end of them as totality is almost over by the time the moon rises. In fact although there are two partial lunar eclipses in 2012 and 2013, we'll have to wait until 2014 to get a reasonable view of the next total one.

After putting on a great show in the early morning sky right through the winter the planet Venus is gradually heading in towards the sun and will soon be lost to us. You'll still be able to see it for the next month or so low in the east just before dawn, but after that it becomes lost in the sun's glare. Once it rounds the Sun in the middle of August, however, it re-emerges as a beautiful 'evening star' over in the west until well on into November. Jupiter still conspicuous low in the SSW will also be lost to us during March. During May it reappears in the early morning sky and by the time it reaches opposition in late October it's a very conspicuous object in the southern part of the sky. For the immediate future, however, it's the ringed planet, Saturn, that hogs the limelight. You'll find it high in the south for the next few months not too far away from Spica, leader of the constellation of Virgo. The planet's spectacular rings are slowly broadening out again and are a magnificent sight through even a small telescope.

Finally, this month's your last good chance of seeing the brilliant winter star groups before they disappear into the western evening twilight. On a clear and frosty February night nothing can beat the sight of the mighty figure of Orion the Hunter striding across the southern sky trailed by his faithful hound, Sirius, the brightest star in the heavens. Catch them while you can. Have clear skies!

Al Bireo

Wensleydale Railway News

Wensleydale Railway announces

Murder in the Dale!

The Chuffing Theatre Company and WR have joined forces to present a mystery train journey on Saturday February 19. Budding detectives – or those who just want to watch the entertainment – should book for this event. It starts and finishes at Bedale station; numbers limited to 50 (£18 pp; not suitable for children under 12). Details www.wensleydalerailway.com or phone **08454 50 54 74**

Daytime services in February run on 12/13, 19/20 and 26/27.

Please note these will be “orange days” with trains running between Leeming Bar, Bedale, Fingall, Leyburn, and Redmire (see website or timetable) and NOT “green days” as published in last year's timetable. Next month's programme includes a ***Fiddlers' Fiesta*** on March 19 – enquiries and bookings as above.

Carperby Pavilion Update

As many of you know, events have moved rapidly since the last update. In mid-October we learned that the project had secured major funding via the **FA's sponsorship partner, Mars**. The confectionery company are keen to help community based sports and searched the whole country for a suitable project. Officials at North Riding FA were aware of the efforts that Carperby had made towards constructing their own pavilion and knew that a substantial amount of money would still be needed to complete the project. Representatives from Mars and the FA met with members of the Pavilion Development Group and, after intense negotiations, the company agreed to provide £125,000. In return the pavilion had to be completed within a specified time limit and **Carperby would feature in national TV advertising to promote Mars' community commitment**. Four filming sessions were completed by mid-January and the final one, involving **Premiership footballers**, will have taken place by the time you are reading this.

The building and an all-weather surface on the old tennis court were finished on 7th January. In other words, a six month project had been completed in two and a half months. It has been a great effort by **Scott Stephenson, Chris Peacock, Steve Harrison and the rest of the building crew** to ensure that the completion date was met.

Consequently, we are still in fund-raising mode. Our next event is a **concert on Saturday 19th February featuring Phil Beer and his special guest Miranda Sykes**. Phil was our first guest in 2009 and his sell-out concert was enthusiastically received. He had such a good time that he asked to return so if you missed him the first time, now's your chance. **A dazzling**

instrumentalist, Phil is perhaps best known as a top flight fiddler but his skills don't stop there – he also plays slide, Spanish and tenor guitar, mandocello, viola, mandolin and South American cuatro, as well as being a vocalist. His reputation as a multi-instrumental wizard has gained him international status for over two decades. He has been nominated as **Musician of the Year for 2011** in the Spiral Earth Awards. **Miranda Sykes has been described as "an ace double bass player and singer** who has worked with everyone that's anyone on the acoustic scene..." She regularly appears with Show of Hands and has toured throughout the United Kingdom, North America, Canada and Europe. Her rich, spine tingling vocals and double bass playing are much in demand and she enjoys working alongside some of the finest musicians in the world. The concert will be held at Carperby Village Institute. There will be a licensed bar and doors will open at 7pm. **Tickets are £10 in advance or £12 on the door and can be obtained by calling 01969 663808.**

We are also planning a **St. Patrick's Celebration on Saturday 19th March**. More details of that next month.

We would like to extend our thanks to a number of people who have helped us with the project. **William Hague MP** praised the determination of the villagers in embarking upon the project and commented on the spirit of the community in Carperby. **Jane Ritchie** at the Elm House Trust has given us vital financial assistance and **The Upper Dales Area Partnership** contributed a grant of £3400 towards plastering costs. **Councillor John Blackie** and various officials at **NYCC & RDC** have also helped to smooth the way in recent months.

If you would like to see the building in progress go to www.lobstervision.tv and

then type "moxie" (without the inverted commas) into both the username and password boxes. Pip Land has also been taking photographs of progress on the pavilion and her gallery of pictures can be viewed at www.pipspatch.com/pip-pictures

The **planned broadcast date for the Mars commercial** will be **Wednesday 9th February** and we will be given the exact time of broadcast in the next couple of weeks.

Steve Sheldon

Civic Service

On 20th February, St Margaret's, Hawes, will host a Civic Service at 10.30am. This is a special service when thanks will be given for the town and all that happens in it. We shall celebrate the whole community from the Parish Council to the people who work in the health and social services, the firemen, people organising social groups and everyone who gives of their time and effort to make Hawes such a splendid place in which to live.

Rev. Ann Chapman

Decorative and Fine Arts Society

Mining Art

The rich culture associated with coal mining is unique amongst the heavy industries. Until recently part of its priceless legacy, mining art, has escaped attention. In '**Shafts of Light: the Phenomenon of Mining Art**' Robert McManners scrutinises the significance of this imagery and analysis the motives of the artists who produced this powerful body of work.

Robert, himself an artist, will speak at Wensleydale Decorative and Fine Arts Society on Tuesday 8 February at 2.00pm in Middleham Key Centre. His enthusiasm for coal mining stems from his upbringing in Ferryhill, in the centre of the Durham coalfield. His publications include *Shafts of Light – Mining Art in the Great Northern Coalfield*; *McGuinness- Interpreting the Art of Tom McGuinness*; and with Gillian Wales, *Quintessential Cornish – life and works of Norman Cornish*.

Non-members are welcome at £5 per lecture, pre-booking is essential. further information is available from the Membership Secretary, tel **624203**.

Wensleydale Railway

Guided walks from the train in 2011

Would you – *or someone you know* - like to join WR's team of volunteer walk leaders and back-markers? We would especially welcome a few more people from the Thirsk, Northallerton, Masham, Richmond, Leeming Bar and Bedale areas (i.e. near the start of the rail journey for most passengers). Although WR runs 25 guided walks each year, the commitment is only two or three times each year if the team is large enough – please ring me if you would like to know what is involved. All walks start from a station (usually Leyburn or Redmire) and most are about 5 miles, with an occasional 2 mile Guided Stroll, 4-5 mile walk with pub or village hall lunch - or longer walks on Good Friday and New Year's Day. The next events are a 7 mile guided walk on Good Friday, April 22, and a Family Easter Egg Hunt from Redmire to Bolton Castle on Easter Sunday, April 24.

Ruth Annison Phone 650349

Best Foot Forward

I promised you a trip to Potts Valley so here it is. Park at Newbiggin **on Lune** (there are too many Newbiggins in the



north!; simply mean 'new buildings'), crossing the A685 make for Friar's Bottom Farm and drop down into the lovely Smardale Gill. Before the bridge take the path which climbs left to cross the disused Kirkby Stephen to Tebay railway and then follow it north for a good two miles to arrive in Crosby Garrett. Stiles through the walls point the way, overlooking the gill to the right.

The chances are you've never been to this village! It is looked down on, on the way north on the Settle to Carlisle line but the station was lost years ago. It is well worth a good look around; double-sided with central beck, chapel near the centre, St. Andrew's church high above at the north and several old houses, some quite grand. Last May a Roman helmet was discovered nearby by an amateur metal-detector user.

Find your way west now, on one of the footpaths that sneak out left to climb over the railway to join Ladle Lane, a bonny green track that is followed until it becomes a footpath and drops down to Potts (just a building). Here beginneth Potts Valley! For a good mile the green path goes south beside the beck through limestone scenery then gradually climbs round the southern side of some enclosed fields. It is now open

fell and the route swings due west to join a minor road (Newbiggin to Great Asby) at Fell Head Farm.

So while we are here we'll cross open country (a little rough) directly west to **Sunbiggin Tarn**. There is a suitably placed hide for bird-watchers at this quiet spot (although sometimes trippers arrive at the other side on another minor road). This is decision time. We are to join the Coast to Coast path about half a mile south of the hide. If walking direct beside the fence it can be boggy and there's another high barbed fence to cross (I've blood on my leg to prove it). You might prefer to go round the tarn and across, south, to the C-to-C path.

This well-trodden way leads across Ravenstonedale Moor to the road down to Newbiggin, about two miles away with long views south to the Howgill Fells. The whole walk is about 11 miles, mainly on limestone, good at all times of the year, but if you're a lover of cowslips, wander along Ladle Lane in the spring.

Mention of the Howgills makes me think we'd better go there before too long.

A.S.W

Prunings

A personal take on Plants, Propagating and other related rural ramblings.

As the snow melts the normal counterbalance for the drab colourless world we find ourselves in is the thought that Spring will be with us soon, and the countryside will burst into life. Unfortunately it won't be this early, and I am already aware that some of the plants I valued are unlikely to recover from the harsh conditions they have been subjected to thus far. No doubt more will succumb. Some of my half-hearted frost protection doesn't look too clever – I might just leave out the bubble wrap next year, I'm not sure I want beds full of Nepalese prayer flags!

I keep making lists of jobs, and I know many of them will need to be repeated. Brushing the snow off evergreens and conifers so that the branches won't bend and break; I have cleared my precious box hedge more than twice. My other half produced a window brush so that I could clear the polytunnel more effectively, and I shall fill as many tubs as I can with mole hill soil as soon as things dry up a bit. I use it to extend the compost, anything in a large pot or tub will benefit as not only does the extra weight help prevent the wind from blowing them over, but they don't dry out as quickly.

During one brief thaw I emptied the water-butt and gave it a thorough clean out. The seeds and cuttings will benefit later on from clean rainwater. I've been working round the pots to firm them up, sometimes the frost lifts the roots, and it's important to get rid of the air gaps as further frost will do more damage if they are left. I'm always tempted to cut back untidy top



growth, but it's not a good idea as it provides quite a lot of protection by creating a micro-climate and breaking up the wind. If all else fails I'll lose myself in the seed catalogues!

Good luck! And whatever you grow, take time to enjoy it.

Rose Rambler

National Park Grant Cut

The Department for Environment, Food and Rural Affairs (DEFRA) has announced that, as part of the Government's Spending Review, the National Park Authority's annual grant for 2011/12 will be £5.1m, falling to £4.2m by 2014/15.

This compares to a grant of £5.4m for the current financial year (2010/11), and represents a cut of 28.5%, taking into account inflation, over the four-year period.

David Butterworth, the Authority's Chief Executive, said: "There is little point in beating about the bush. The size of the cut will obviously mean a reduction in services and a reduction in the number of staff employed by the Authority; both immediately and over the four-year period, although the exact numbers are not yet confirmed. We will now be producing our detailed budget and working out exactly how we are going to cope in each financial year and what it will mean in terms of levels of services we can provide to the public."

"We intend to consult the public on the draft budget following a special Authority meeting in February."

Police Report

On the crime front a house was entered by burglar(s) in Hawes in December through an insecure door. Items were taken from the kitchen. This is an opportunist type crime which leaves the victim feeling very vulnerable.

How many times do we arrive home and open the door, dump whatever contents we take out of the car on the kitchen side, including car keys and then go to a different part of the house for several minutes. I know I do. It only takes seconds to get into an insecure house, quickly go through belongings and take whatever is valuable and make off – sometimes in your car. On dark evenings lock your door behind you as you never know who is driving passed when you arrive home.

Late December saw the return of the quad bike thefts. Another one was stolen in January. There have been some arrests regarding this and investigations are ongoing. However if you own such a vehicle please make every effort to secure your vehicle when not in use and do not leave the keys in the ignition or hanging up nearby where the quad is stored. Please also report any suspicious vehicles or unannounced callers that do not appear genuine that turn up at your premises as soon as you can using the 0845 60 60 247 number.

I was watching the news a few nights ago and it was highlighting the sharp rise in the cost of domestic heating oil, due to increased demand and also difficulties in deliveries. There have been locks tampered with on domestic oil storage tanks in the dales in the last month or so. The rise in cost makes stealing oil more lucrative. Remember a vehicle is needed to carry away the quantities worth stealing – one 5 gallon drum does not go far - so please keep an

eye on your domestic oil supply and report suspicious activity near oil tanks immediately- thanks.

One method of securing oil tanks either domestic or business is “OilSecure” and more information can be found at www.oilsecure.com.

There has been a substantial rise over the past couple of months of reports of criminal damage. Some may be attributed to the throwing of snowballs and may have been done “accidentally” by children who have then run away out of fear. However much more has been committed late at night, no doubt by drunks on their way home from the pub. If you are one such individual that gets their kicks out of damaging property because it cannot fight back, then consider this “How would you like it happening to you?” Getting your window smashed (whether home, car or business) or car scratched or garden furniture trashed is not only costly, but also traumatic. It is also not funny. Getting caught will lead to: arrest: fine (or imprisonment): to pay compensation to the victim: and a criminal record.

Thanks as always.

**Andy Foster PC826
0845 60 60 247**

Andy Foster PC826
Leyburn Safer Neighbourhood Team
Wards of Addleborough and Hawes & High
Abbotside
0845 60 60 247

Wensleydale School Words for February

The spring term began in high spirits; the national school league tables, published in January, highlighted our improvements. For the most significant measure at Key Stage 4, the proportion of students achieving 5 GCSEs at grades A*-C including in English and Maths, the school's performance showed an increase of 36% on the last two years to now stand at 69%. This is one of the best results for any true comprehensive school in the county. Expectations are high for this summer with attainment predicted to be even higher than last year.

Success was not limited to academic performance either: St. Francis Xavier hosted the KS3 and 4 Girls and Boys Badminton at the end of last term and the opportunity to represent the local sports partnership in the Center Parcs National Badminton Competition was up for grabs to the victors. Following their success in the county round of the Center Parcs competition last year, Wensleydale continued to dominate the field and won all the competitions. Wensleydale beat Richmond and SFX to come top in the KS3 Girls competition, the KS3 boys competition, as well as the KS4 girls and KS4 boys competitions. Congratulations to the players who will be representing the Partnership in the County Round in February.

Be a Wensleydale Womble

The warm sunshine and birdsong tempted me out for a walk on January 19th.

Not surprisingly, the river bank was piled high with debris from the retreating floodwaters of the previous week-end. Amongst the branches, lots of empty plastic drinks

bottles had been washed up so I gathered up an armful of them to take home for recycling. Alas, when I reached the road, I found much the same situation there, bottles keeping company with triangular see-through sandwich boxes, drinks cans (some conveniently squashed flat by passing cars), cigarette packets and sweet wrappers.

For the next week or two I'll be taking carrier bags on my walks, to gather up the rubbish on my usual route. If other local walkers do the same, perhaps we can get the riverbanks and roadside verges tidied up before the visitors arrive at Easter!

It all began with an iPhone...

March was when my son celebrated his 15th birthday, and I got him an **iPhone**.

He just loved it. Who wouldn't?

I celebrated my birthday in July, and my wife made me very happy when she bought me an **iPad**.

My daughter's birthday was in August so I got her an **iPod Touch**.

September came by so for her birthday I got my wife an **iRon**.

It was around then that the fight started...

What the wife failed to recognise is that the **iRon** can be integrated into the home network with the iWash, iCook and iClean.

This inevitably activates the **iNag** reminder service.

Bainbridge PO Has At Last Re-opened!

On December 20th before 9.00am there was a small queue at Sycamore Hall to greet Steve Reynolds as he opened up the new PO and the press were .

After the brief opening by County Cllr. John Blackie, who thanked all concerned in achieving this result, Steve served over 20 customers in 2 hours with a wide range of items. He was delighted to see regular faces who previously had made the 8 mile return journey to Hawes. Each opening since then is continuing to see about 25 customers, proving that we did need the facilities.

The full range of PO services is available, including foreign currency. Euros and dollars are kept in stock so can be collected there and then. Other currencies take 2 days, so if you order on Monday, it can be collected from Bainbridge on the Wednesday.

I now continue to work with a new advisor on acquiring facilities at Askrigg. I hope it will not take another year! Opening times at Bainbridge are Mondays and Wednesdays from 9.00 to 11.00am, except bank holidays and Steve's holidays. Please USE your post office, or LOSE IT

Kate Empsall

Hawes Christmas Festival

We hope everyone enjoyed the Christmas Lights Display over Christmas and the New Year. We were blessed with reasonable weather on Switch-on Day with the children's Party and community carol singing with Hawes Prize Silver Band whilst waiting for the arrival of Father Christmas on his Sleigh.

A big thank you to the Friends of Hawes Christmas Lights and the Business Friends who not only support us financially but also allow us to erect lights on their buildings. We also had a few generous donations from other fund-raising events which add to our coffers.

The Friends Draw was won by Mr Paul Taylor of Sedbusk we hope he enjoys his princely sum.

A big thank you is due to all who helped with the erecting and dismantling of the Christmas Lights including the committee we had great assistance from Harry Balderson, John Hesletine, Michael Fothergill, Dave Barker, Phil Baldwin, Jim Sleightholm, Peter Wood, Stuart Armstrong, Andrew Ramsden, Sylvia & Brian McGregor, Vinnie and Santa. It was a true case of many hands make light work.

We have a few months to dream up some improvements to what we've got and would welcome any suggestions and would appreciate any offers of help, so if you are available please contact Kevin White **667236** or Steve on **667201** for details.

Liz Lawson

Leukaemia Research

A cheque for £1850 was sent to Leukaemia Research recently. £1810 was raised at a Sunday Lunch and Raffle held at Stone House Hotel in December, and £40 was from donations received at the Dales Countryside Museum. The organisers wish to thank everyone who helped to raise this money.

Doreen Whitehead



Mystery Picture. This shouldn't be too difficult!

Out of the Mouths (or Pencils) of British Children

RELIGIOUS STUDIES

If you marry two people you are a pigamist, but morons are allowed to do this.

HISTORY

Sir Walter Raleigh circumcised the world with a big clipper.

GEOGRAPHY

In geography we learned that countries with sea round them are islands and ones without sea are incontinents.

GEOGRAPHY

The closet town to France is Dover.
You can get to France on a train or you can go on a fairy.

HISTORY

In wartime children who lived in big cities had to be evaporated because it was safer in the country.

MATHS

The total is when you add up all the numbers and a remainder is an animal that pulls santa on his sly.

HISTORY

SOMETIMES IN THE WAR THEY TAKE PRISNERS AND KEEP THEM AS OSTRIGES UNTIL THE WAR IS OVER. SOME PRISNERS END UP IN CONSTERPATION CAMPS.

Ask Craske!

A new occasional feature as we visit
Andrew Craske in Woodhall.

It's hard to know where to begin! Those of you with memories will remember two long articles 12 years ago featuring *Hilda*, the famous Craske steam roller, and the travelling funfair. Let's face it, Andrew is a *collector!* ... and very understated as snippets of interesting history keep getting dropped into our conversation.

The Woodhall Lane house is a treasure store of artefacts but also, and more important for our purposes now, masses of collected articles, papers, books and leaflets reminding us of the details of life in and around Askrigg especially in the 1950s and 1960s. So let us dive into some of the files and folders as we remember the businesses and shops.

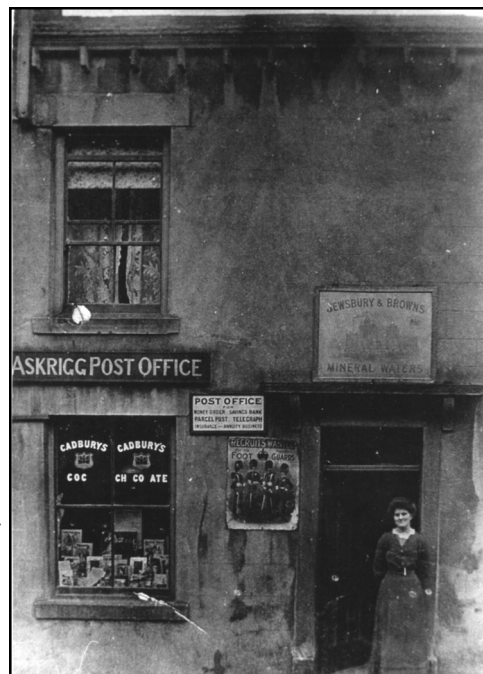
We might as well begin in this house where Andrew was born, his parents having come from Leeds in 1948. Both his father and grandfather like him were electricians—the latter working as such in 1898! That's pretty early to be involved in electricity. The house is where the well-known C. F. Abraham (Transport) Ltd actually began in the 1920s: Fenwick Abraham, with wagons leading pigs, and Robert making concrete pig-feeding troughs, then 'Hardraw slates', production later transferring to Hawes station yard. (A bit of the old wall can still be seen.)

In the early 1930s the haulage business moved to Woodburn by the Crown in Askrigg. Letter headings proudly state, in 1935, '5 wagons', but by 1977 there were 'fifty vehicles' with the business moving to Co. Durham and operating in many parts of the country. There was still the office in Askrigg until the early 1990s. At this point Andrew fished out a brass plaque which had been on the company's door!

*'C.F. Abraham (Transport) Ltd
Registered Office'*

"Askrigg used to be full of wagons and other vehicles", said Andrew. "What with Jack Storey's Archway Garage (where the HPB entrance is, and just above it his wife's little toyshop— the only place you could get fireworks!). Then, just opposite Parkins Garth there was J.F. Metcalfe's (Molly Jack) Haulage: cattle, hay and straw; more lorries for Wensleydale Coal and Coke at the end of Worton Lane; and outside the shops there were always delivery lorries bringing goods in."

So only fifty or so years ago the village had two butchers: one by the new hairdresser's— Dixon, then Edgar, Daykin— and Henry Trotter in Dyke House (where Peter and Ruth Annison are), which had been Charlie Bell's draper's shop - a slaughter house up the alleyway Elm Hill; two sweet shops— Miss Preston's at the top left of Main Street and one near the



cross; grocers— Banks's in what became the Askrigg Foundation shop and Johnson's, opposite, which became T.T. Calvert and Son ('Dick', remembered by many); Mrs Willy Watson had a shoe shop above the archway, and the Post office was to the lower side of it. Yoredale House (just below the church) was Weatherald's general household store for your paints and wallpaper.

To add to the general bustle of the village the Wensleydale (Mason's) Dairy made cheese and butter— with whey for the nearby pigs— in the area by Apothecary's House— and won prizes nationally at the British Dairy Farmers' Association Dairy Show. (Andrew owns certificates to prove it, from 1949 and 50). When Reg Hugill (generation above the Reg who had the general store where 'Chaste' restaurant in Hawes is) took over the dairy he branched out also with eggs, poultry and rabbits, selling his wares as far east as Guisborough in his little green A35 van.

As for banks, the Midland arrived once a week using a room at the back of Yoredale House, and likewise Barclays set up in the club room in the upper part of the King's Arms (where there was also a snooker table); that was after it ceased in the room of Doris Abraham's house, just opposite. Then Andrew remembered: "And my mother had a bit of an antique shop as well!" Just by Miss Preston's sweetshop there was the Incubator House belonging to the long established and famous Sam

Outhwaite's *Exchequer Leghorns* Poultry Farm, but that's almost a story in itself; I'll bet you can't wait for the next instalment!

Then, as I was on the point of dragging myself away, "And there was the fish and chip shop up Silver Street!" A few days later, there was knock on the door. It was Andrew. "And Banks's Animal Feeds used to be up there as well; it's now 'Old Mill 1 and Old Mill 2'". **A.S.W.**

Zumba

Still haven't managed to get into your new year fitness routine yet?

Don't worry "ZUMBA" has arrived in Leyburn on Tuesdays and Saturdays at Leyburn Leisure Club. If you are wondering what on earth Zumba is, it is a Latin American dance based fitness class with a party atmosphere. It is for absolutely anybody (over 16) regardless of ability as the focus is on fun! Classes cost £4 each and run Tuesdays at 7.45pm and Saturdays 10.15am for an hour.

Contact Leyburn Leisure Club **622929 Lesley 07989 365363, Pauline 07973 235175.**

Lesley Williams, Active for Life Officer



Hawes School News

Hawes School Takes Up Blogging

Hawes School has taken something of a pioneering step into the unknown, with its commitment to be a blogging school. There are very few schools, that we are aware of, that have set up a comprehensive blog site. We very much like the idea so, with the help of Mr Metcalfe, we are giving it a go.

Blogging might best be described as an on-line diary. Our blog features what is happening in the different classes and also, with Jo's help, DalesPlay. We are going to have a Blog Council for the children to use in a similar way that they have used School Council meetings. The children will be able to post questions and ideas to me at any-time...even in the holidays! We are also having an 'Around the World' page, that covers all other school friends in the UK and beyond.

Finally we are setting up a 'Newshounds' page that will feature children's news and views. This will be one of our biggest initiatives this year and we are hoping to work on developing blogging collaboratively with Middleham, Spennithorne and Barton Schools. We believe our blog allows busy people like parents and governors to get a better insight into what happens on a weekly basis in school. Our aim is to have 20,000 views, 500 posts of our work and ideas, 1,000 comments on our work/ideas and visitors from 50+ countries, this year.

Please help by going on line and visiting **H a w e s S c h o o l B l o g** at www.hawesps.posterous.com This site is also accessible from Hawes School Website <http://www.hawes.n-yorks.sch.uk/> by clicking on the blog link. If you leave a comment we would be most grateful. You will find 'comment' buttons at the bottom of every item.

Whether you are local or a visitor if you know anyone that might be interested in having a look at our blog please pass this information on. If your friends or indeed you are based overseas ... all the better. By noting the origination of visitors to our blog, we can gather their countries flags. It's a bit like modern day stamp collecting!

Right now blogging is entirely new to us. I notice, for example, that children rather overlook the niceties of punctuation and spelling in their excitement to contribute. However that creates a learning opportunity and we will enjoy watching everyone's skills rapidly develop .

Finally on a point of e-safety, please only use first names in any comments, that you may leave.

David Eldridge, Headteacher

Askrigg Playgroup

So far this term the children have enjoyed exploring shapes. They have made some great pictures including a fantastic stained glass effect triangle picture! Over the next few weeks we are learning about numbers.

We welcome all children from 18 months onwards, so why not come along and join in some of our great activities including, mark-making, sand, water, home corner, light box, music, outside area and snack-time.

Our sessions run on Tuesday and Thursday mornings (term time) from 9.20 - 11.15am, in the fantastic 0-5 room at the Wensleydale Surestart Centre, Askrigg. For more information call **650831**.

Gillian Alderson

WHAT'S ON LISTING

January 2011

- 28 Museum Lecture. See p5

February 2011

For Wensleydale Railway events see p22

- 1 Hawes Drama Group reads "Murder in Play" by Simon Brett, Gayle Institute 7.30pm.
- 4 Wensleydale Society; "The Hubble Telescope and its discoveries". West Burton Village Hall 7.30pm.
- 4 Charity night at the Fountain, Hawes with the Beer House Boys in aid of Sue Ryder Hospice, 9.00pm.
- 4 Fairy Dust and Fascinators Winter Ball, Simonstone Hall. See p3
- 5 Men's Breakfast, Sycamore Hall. All Welcome
- 6 Gayle Mill Demonstration Day. Special guided tours at 11.00am and 2.30pm. Booking advised; details: **667320**
- 8 Decorative and Fine Arts Society; Middleham Key Centre, 2.00pm. See p21
- 8 YDNPA Planning Committee; Yoredale, 10.30am.
- 9 Yorkshire Dales LEADER Local Action Group. See p14
- 14 St. Valentine's Day
- 16 Carperby W.I. "Working with Wonder-women" with William Tetlow. Institute 7.30pm.
- 17 Hawes W.I. "Land of the Gurkhas" ; Neil and Elizabeth Piper. Methodist Schoolrooms, 7pm.
- 18 Museum Friends. "Mapping the Dales" With Keith Sweetmore. 7.30pm.
- 18 School half term begins
- 19 Mobile Skip in Gayle. See p13
- 19 Gayle Mill All Day Event. See p.10
- 19 Concert at Carperby. See p19
- 19 Murder in the Dale on Wensleydale Railway. See page 22
- 20 Civic Service at St Margaret's, Hawes 10.30am. See p21
- 23 Hawes Gala AGM. See p3
- 24 River Bain Hydro Viewing Day See p15
- 24 Gayle Ladies; "Sign Posts to the Stars". By Jack Sutton. 7.30pm.

- 26 Casino Night for Amala. See p10
- 27 Guides Thinking Day at St Oswald's, Askrigg, 10.30am.
- 27 Healing Service at St Margaret's, Hawes, 4.00pm. All welcome
- 28 Fair Trade fortnight begins.

Dales Countryside Museum

There is an exciting programme of events this year. For full details look in the Visitors' newspaper or on the website below.

February

- 18 "Mapping the Dales". A lecture to the Friends of the Museum; by Keith Sweetmore of the Public Records Office, Northallerton. Start 7.30pm. Non members welcome admission £1
- 22 Friends of the Museum will be spinning in the foyer in the afternoon. They will talk about many aspects of wool craft and may be able to help you on your own project

March

- 2 There are a few tickets left for North Country Theatre's production of "Egil Skallagrimson keeps his head. Start 7.30pm. Tickets are £8.50 or Under 16s £5.

Call in or 'phone 666210

or email hawes@yorkshiredales.org.uk

Bainbridge Parish Council

**TENDER REQUEST for
GRASS CUTTING in the CEMETERY**
BAINBRIDGE PARISH COUNCIL is seeking tenders to award a contract for Grass Cutting in the parish owned Cemetery in Bainbridge village from 2011 onwards. The contract will cover 8 cuts per year and the Contractor will need to supply their own grass cutting equipment but it is possible that the PC can arrange for the cut grass to be taken off site.

Please send tenders, in writing, to: Clerk for Bainbridge Parish, Wegber, Carperby, Leyburn, DL8 4DD. The closing date is 1st March 2011 and a decision will be made at the following Parish Council meeting on 9th March 2011.

If you have any queries regarding the work required please ring Cllr. **Brian Brown, 650409.**

Kirkby Stephen Grammar School Specialising in Sport and Applied Learning

SIXTH FORM OPEN EVENING

Wednesday 16th February 2011 7.00pm

We have an open and inclusive sixth form. All interested students and parents are invited to contact the school and have an informal viewing and discussion to help you make the right decision about post-16 education.

You will find out about what KSGS can offer in terms of:

- *A flexible admissions policy
- *Academic success and quality teaching in small groups
- *Life in the Sixth Form
- *The options and decision-making process
AS/A2, Vocational courses, Diplomas,
- *Enrichment Activities
- *Partnership arrangements with Appleby Heritage Centre, Appleby Grammar School and Newton Rigg
- *Guidance and advice on Higher Education and employment

*A chance to discuss courses with specialist subject staff.

For further information or to request a prospectus, **017683 71693** or email admin@ksgs.cumbria.sch.uk

DCM News

Here in the museum, we hold a collection of scrapbooks given to us by the late Nora Worth of Gayle. They contain a fascinating archive on many subjects of interest about life in the Upper Dales. The information starts in the early 19th century and goes up to the mid 1990s. All the files contain information, photographs, newspaper cuttings, publicity and other material relating to all kinds of community life: Schools, church, sports associations, societies, the war years, businesses and services, transport, power, cataloguing changes in the area over the years. They are now housed in a more accessible area and are available for members of the public to view during museum opening hours, from the beginning of the month daily 10am – 5pm. You might find yourself in there!

The Treasured Possessions project carries on into the spring and we are still collecting stories and images of things that are special to local communities. If you would like to be involved please contact the museum or email jane.sammells@yorkshiredales.org.uk

Through February and March we will be exhibiting material from the project which will feature the work of Hawes and other local schools

Our Research Room is open every day and on Mondays there are volunteers to assist visitors with local history or family history research

Debbie Allen

Doctors' Rotas as supplied by the Practice										
AYSARTH SURGERY ROTA Wb - week beginning										
Wb	Feb 7th		14		21		28			
Day	a.m.	p.m.	a.m.	p.m.	a.m.	p.m.	a.m.	p.m.	a.m.	p.m.
Mon	W	J	J	J	W	W	F	F		
Tues	F	J	W	W	J	J	W	W	J	
Wed	W	W	J	J	W	W	F	F		
Thur	J	J	F	F	J	J	W	W		
Fri	F	F	W	W	W	W	F	F		
Doctors: F - France, J - Jones, W - West, C - Closed Morning Surgery: 9.00 - 10.30 a.m. (no appointments) Afternoon Surgery: 4.00 - 5.30 p.m. (appointment only) For appointments and all enquiries ring 663222										
HAWES SURGERY ROTA Wb - week beginning										
Wb	Feb 7th		14		21		28			
Day	a.m.	p.m.	a.m.	p.m.	a.m.	p.m.	a.m.	p.m.	a.m.	p.m.
Mon	F	F	W	F	W	F	J	J	W	J
Tues	W	W	F	F	W	W	F	F		
Wed	F	F	W	W	J	J	W	W		
Thur	W	W	J	J	W	W	F	F		
Fri	J	J	F	F	J	J	W	W		
Doctors: F - France, J - Jones, W - West, C - Closed Morning S'y: 8.45-10.15 Tues till 10.45 (no appointments) Afternoon S'y: 5.00-6.00 Tues 1.00-4.00 (appointments only) For appointments and all enquiries ring 667200										
<i>We have been asked by the Practice to say that occasionally there will be changes to these rotas as both Drs. France and Jones have commitments elsewhere.</i>										

Surgery News

Influenza Vaccination Programme: At the beginning of January, following a lower than expected turn out from patients in the at risk groups, we were ready to return unused doses of winter flu vaccine to the manufacturer. Then the media had a blitz on 'flu death' stories and we ran out of winter flu vaccine in the second week of the month. We do have limited stocks of swine-flu vaccine; this is being offered to people who are under 65 and in an at risk group. We have attempted to telephone all such patients, and all pregnant women, but if you have not yet been vaccinated please telephone to book your appointment without delay. At risk groups include those with heart disease, chronic diseases of the lungs, liver or kidneys, asthma, diabetes, stroke and those on drugs that suppress the immune system. It is unlikely that there will be any vaccine available for patients who are **not** in an at risk group or those who are allergic to eggs.

Breast Screening Unit: Patients served by Aysgarth surgery will have been screened at Leyburn over the last few weeks. The mobile breast-screening unit will be at

Hawes surgery from March 7th for approximately 3 weeks. Women aged between 50-70 years who normally attend Hawes surgery will be sent invitations. If you are over 70 but still wish to be screened, please contact your surgery. Can I ask that as many as possible come forward to be screened. I can understand that mammography is not top of anyone's list of favourite things, but the consequences of a late diagnosis of breast cancer are far worse. My concern is that if we do not use these outreach services, then we will lose them – particularly now when the NHS is being asked to make 'efficiency savings' amounting to some 20% of its budget.

Acupuncture Service: This new service will be offered at Hawes surgery, initially on two Thursdays monthly: **February** : 3rd and 17th. This is a private service offered by June Parker MBAcC of Sedbergh Acupuncture, qualified almost ten years ago. You can find out more by contacting June **0 1 5 3 9 6 2 0 9 7 2** o r juneparker@phonecoop.coop.

There are information leaflets at Hawes & Aysgarth surgeries & further details on the website www.sedberghacupuncture.co.uk

Market Place and Greetings

Annie Taylor

Many thanks to all family and friends for cards and good wishes sent on my 90th birthday.

For Sale

Jack Russell pups: 4 dogs, 2 bitches, tri-coloured and brown and white. Beautiful! Very friendly temperament; mum and dad can be seen. Ready now.
Please phone: **07977 553341**

Sylvie and Geoff Davies

would like to thank friends in Askrigg and Carperby for all their help and support during Sylvie's long stay in hospital. It was greatly appreciated.

Brian and Sylvia McGregor

would like to thank family and friends for their cards, gifts and lovely flowers, during Brian's stay in hospital and Sylvia's 60th Birthday.

Jean Airey

would like to thank all those who sent her cards on her 80th birthday. Thanks also to family and friends who gave money instead of gifts. This is to be shared between Breast Cancer Research and Help for Heroes.

Part Time Staff Required for Corn Mill Tearoom, Bainbridge.

To assist with food preparation and serving customers. Work to include week days and some week-ends from mid-March to end of October.

The successful individual must be well presented, smart and tidy, have a flexible approach to work and good customer service skills.

For further details please contact
Yvonne Peacock 650409.
Closing date February 20th.

Published by

The Upper Wensleydale Newsletter
Burnside Coach House,
Burtersett Road, Hawes DL8 3NT
Tel: 667785 Fax: 663559
e-mail: alan.watkinson@virgin.net

Newsletters on the Web, 2003-09 simply enter "Upper Wensleydale Newsletter" in, say, Google.

Printed by Peter C. Wood and ASW
and collated, folded, stapled by
newsletter volunteers at the
Wensleydale Centre, Yorebridge, Askrigg

Committee: Alan S. Watkinson,
Barry Cruickshanks, Sarah Dinsdale, Sue E. Duffield,
Sue Harpley, Adrian Janke, Alastair Macintosh,
Neil Piper, Janet W. Thomson,

Advertising

Boxed adverts: £5, £10, £15

There is a one-third reduction for six issues or more, so for twelve issues the totals are:

£40, £80 or £120

Greetings etc. £2.00

What's ons (non-commercial) are free

Contacts:

For Hawes area and westward: **Barry Cruickshanks, Ashfield, Hardraw: 667458**

For elsewhere: **Sue Duffield, Fellside, Thornton Rust: 663504**

Whilst we try to ensure that all information is correct we cannot be held legally responsible for omissions or inaccuracies in articles, adverts or listings, or for any inconvenience caused. Views expressed in articles are the sole responsibility of the person by-lined. Articles by committee members carry just their initials. We appreciate being asked before any part of the Newsletter is reproduced.

